



Bihar

# Assembly Factbook™

Dhaka Assembly Constituency



Key Electoral Data of Dhaka  
Assembly Constituency (Vidhan Sabha)

Bihar

# Assembly Factbook™

Dhaka Assembly Constituency



Dhaka Vidhan Sabha

## **Editor & Director**

Dr. R.K. Thukral

## **Research Editor**

Dr. Shafeeq Rahman

## **Compiled, Researched and Published by Datanet India Pvt. Ltd.**

D-100, 1st Floor,

Okhla Industrial Area, Phase-I,  
New Delhi- 110020.

Ph.: 91-11- 43580781-84

Email : support@indiastatpublications.com

Website : www.indiastatelections.com

## **Online Book Store :**

www.indiastatpublications.com

**Report No. :** AFB/BR-021-0125

**ISBN :** 978-93-5313-074-9

**First Edition :** January, 2018

**Eighth Updated Edition :** January, 2025

**Price :** Rs. 11500/-

US\$ 310

**© Datanet India Pvt. Ltd.**

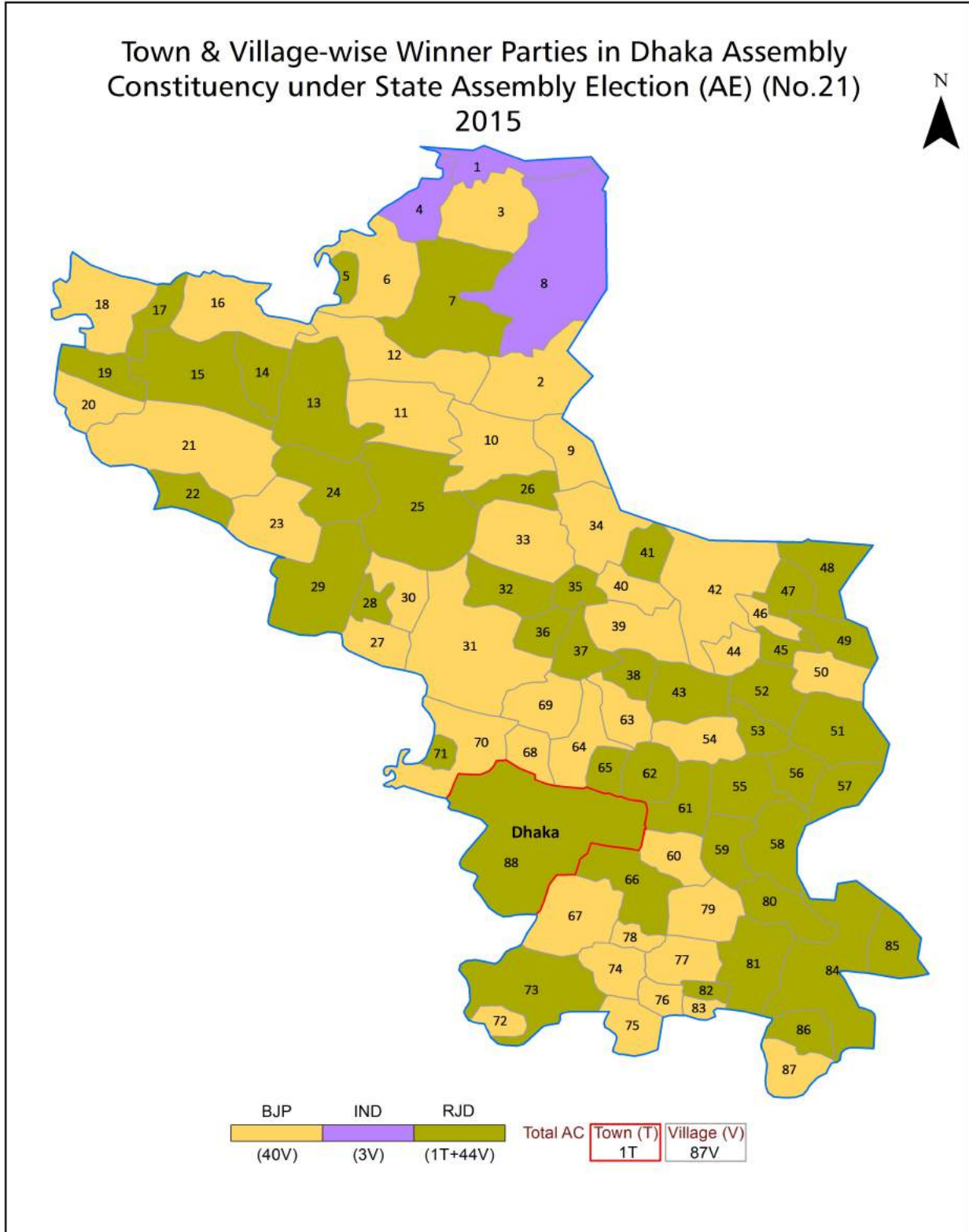
All rights reserved. No part of this book may be reproduced, stored in a retrieval system or transmitted in any form or by any means, mechanical photocopying, photographing, scanning, recording or otherwise without the prior written permission of the publisher. Please refer to Disclaimer at page no. 251 for the use of this publication.

Printed in India

# Contents

No.	Particulars	Page No.
	<b>Introduction</b>	
1	Assembly Constituency - (Vidhan Sabha) at a Glance   Features of Assembly as per Delimitation Commission of India (2008)	1-2
	<b>Location and Political Maps</b>	
2	Location Map   Boundaries of Assembly Constituency - (Vidhan Sabha) in District   Boundaries of Assembly Constituency under Parliamentary Constituency - (Lok Sabha)   Town & Village-wise Winner Parties- 2024, 2020, 2019, 2015, 2014, 2010 and 2009	3-11
	<b>Administrative Setup (2011)</b>	
3	District   Sub-district   Towns   Villages   Inhabited Villages   Uninhabited Villages   Village Panchayat   Intermediate Panchayat	12-16
	<b>Demographics (2011)</b>	
4	Population   Households   Rural/Urban Population   Towns and Villages by Population Size   Sex Ratio (Total & 0-6 Years)   Religious Population   Social Population   Literacy Rate	17-18
	<b>Electoral Features</b>	
5	Important Dates of Last Elections Held   Electors by Gender   Service Electors   Voters   Voters Turnout   Polling Stations & Average Number of Electors per Polling Station   Electors by Age Group   Present Elected Representatives	19-24
	<b>Historical Summary Election Results</b>	
6	Vote Share of Major Parties   Winning Margin (Number & Percentage)   Polarity of Parties   Summary Result of Assembly Segment of Parliamentary Elections 2024, 2019, 2014, 2009, 2004 and 1999   Summary Result of Assembly Elections 2020, 2015, 2010, 2005 (Oct), 2005 (Feb), 2000, 1995, 1990, 1985, 1980, 1977, 1972, 1969, 1967, 1962, 1957 and 1952	25-50
	<b>Polling Station Level Election Results</b>	
7	Name and Number of Polling Station 2024, 2020, 2019, 2015, 2014, 2010 and 2009   Polling Station-wise Electors, Voters & Voters Turnout 2024, 2020, 2019, 2015, 2014, 2010 and 2009   Polling Station wise Elections Results 2024, 2020, 2019, 2015, 2014, 2010 and 2009	51-230
	<b>Share of Assembly Constituency</b>	
8	Share of Assembly Constituency - (Vidhan Sabha) in State, District and Parliamentary Constituency - (Lok Sabha)	231
	<b>Socio-Economic Amenities (2011)</b>	
9	Access to Administrative Units   Agricultural, Manufacturing and Industrial Commodities   Demographic Indicators   Education   Health & Manpower   Drinking Water Supply   Sanitation   Entertainment and Recreations Infrastructure   Power   Food Allocation Distribution and Marketing of Agriculture Commodities Infrastructure   Transport and Road Infrastructure   Communication   Banking and Financial Services   Land Use   Irrigation Source	233-247
10	<b>Abbreviation &amp; Sources</b>	248-250
11	<b>Disclaimer</b>	251

Location & Political Map



## Administrative Setup

### List of Village Panchayat & Intermediate Panchayat (Block) Name - 2011

Village Name	Village Panchayat Name	Intermediate Panchayat Name
Amwa	Bishunpur	Ghorasahan
Bagahi Bhelwa	Bagahi Bhelwa	Ghorasahan
Bahlolpur	Karmawa	Dhaka
Bakhri Khajuri	Bhagwanpur	Dhaka
Bakuliya	Barwa Kalan	Ghorasahan
Balua Tola Goapari	Balua Tola Goapari	Dhaka
Barharwa	Barharwa	Dhaka
Barharwa Lakhansen	Barharwa Lakhansen	Dhaka
Barharwa Siwan	Barharwa Siwan	Dhaka
Barwa	Phulwariya	Dhaka
Barwa Kalan	Barwa Kalan	Ghorasahan
Barwa Khurd	Shripur	Ghorasahan
Basahia	Bhandar	Dhaka
Basantpur	Samanpur	Ghorasahan
Bhagwanpur	Bhagwanpur	Dhaka
Bhagwanpur Kotwa	Gorasahan North	Ghorasahan
Bhandar	Bhandar, Jhitkkahi	Dhaka
Bhawanipur	Balua Tola Goapari	Dhaka
Bijai	Bijai	Ghorasahan
Bikrampur	Gahai	Dhaka
Bisambharpur	Bisambharpur	Dhaka
Bishunpur	Bishunpur	Ghorasahan
Champapur Koiriya	Bijai	Ghorasahan
Champapur Sapaha	Bagahi Bhelwa	Ghorasahan
Chand Mohan	Gawandari	Dhaka
Chandan Bara	Chandan Bara	Dhaka
Chandrahia	Dalpat Bishunpur	Dhaka
Dalpat Bishunpur	Dalpat Bishunpur	Dhaka
Dostiya	Gurhanwa	Dhaka

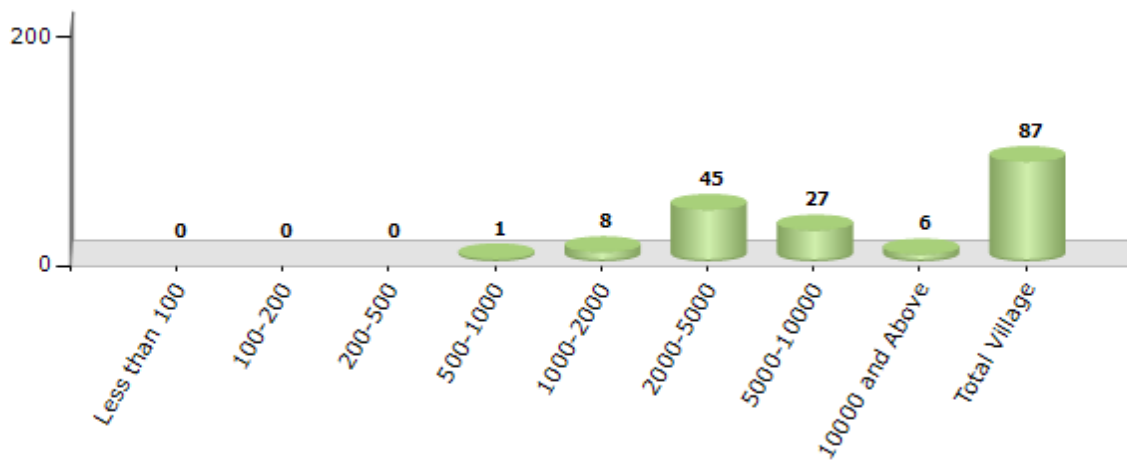
Contd....

Demographics

Number of Villages by Population Size - 2011

Less than 100	100-200	200-500	500-1000	1000-2000	2000-5000	5000-10000	10000 and Above	Total Village
0	0	0	1	8	45	27	6	87

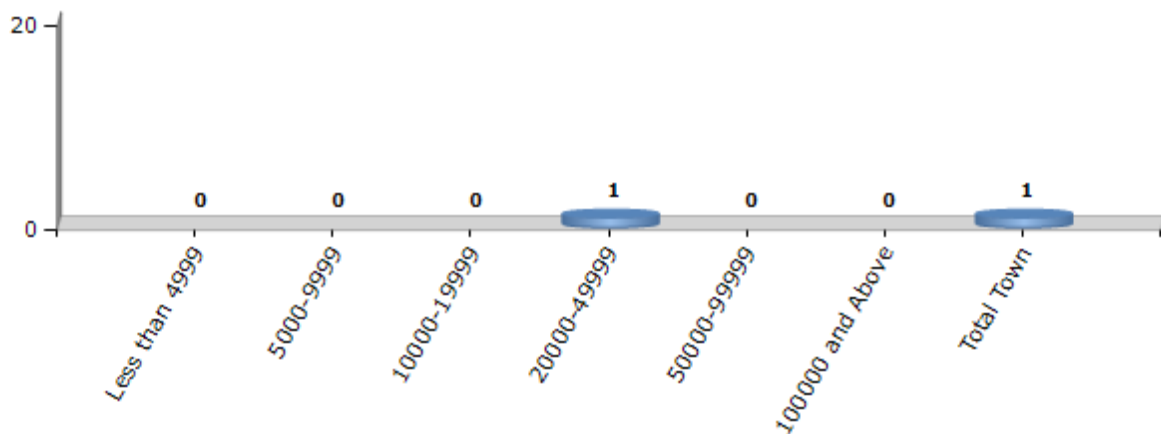
Number of Villages by Population Size - 2011



Number of Towns by Population Size - 2011

Less than 4999	5000-9999	10000-19999	20000-49999	50000-99999	100000 and Above	Total Town
0	0	0	1	0	0	1

Number of Towns by Population Size - 2011

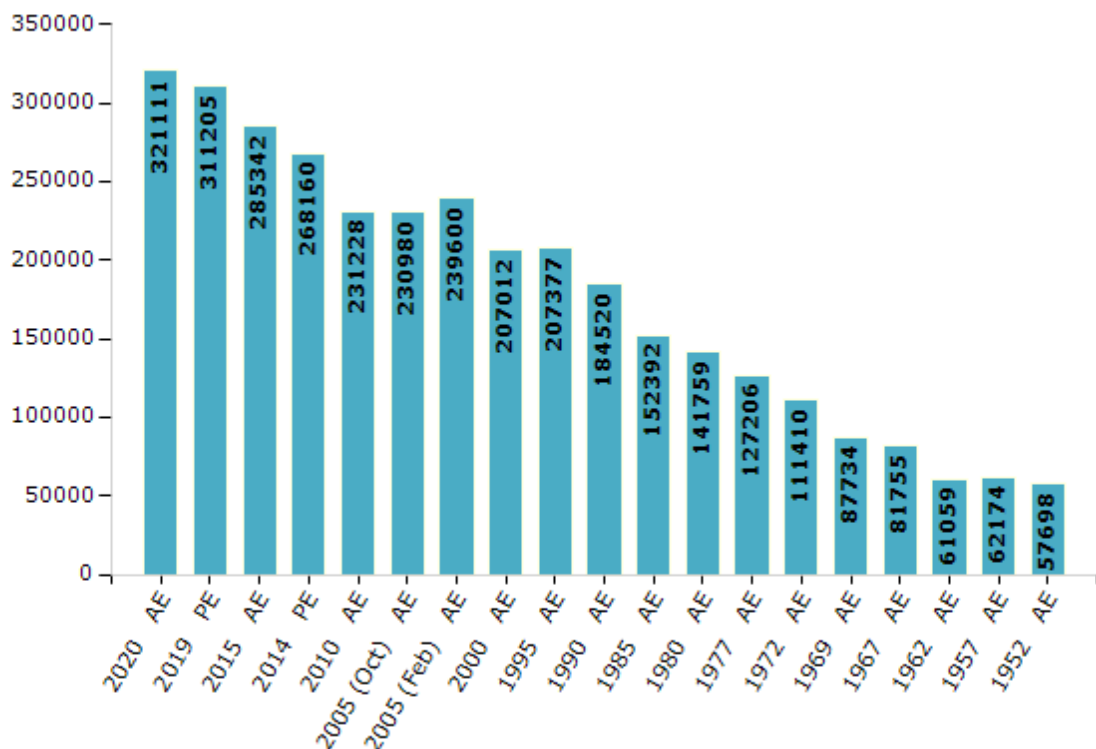


## Electoral Features

### Electors by Male & Female

Year	Male	Female	Others	Total	Year	Male	Female	Others	Total
2020 AE	168899	152192	20	321111	1995 AE	109788	97589	-	207377
2019 PE	163741	147450	14	311205	1990 AE	98149	86371	-	184520
2015 AE	150674	134653	15	285342	1985 AE	80081	72311	-	152392
2014 PE	141669	126480	11	268160	1980 AE	75665	66094	-	141759
2010 AE	122668	108560	0	231228	1977 AE	65542	61664	-	127206
2009 PE	-	-	-	-	1972 AE	57672	53738	-	111410
2005 (Oct) AE	122309	108671	-	230980	1969 AE	45410	42324	-	87734
2005 (Feb) AE	126609	112991	-	239600	1967 AE	-	-	-	81755
2004 PE	-	-	-	-	1962 AE	-	-	-	61059
2000 AE	109008	98004	-	207012	1957 AE	-	-	-	62174
1999 PE	-	-	-	-	1952 AE	-	-	-	57698

Number of Electors



Note : AE : Assembly Election, PE : Assembly Segment of Parliamentary Election

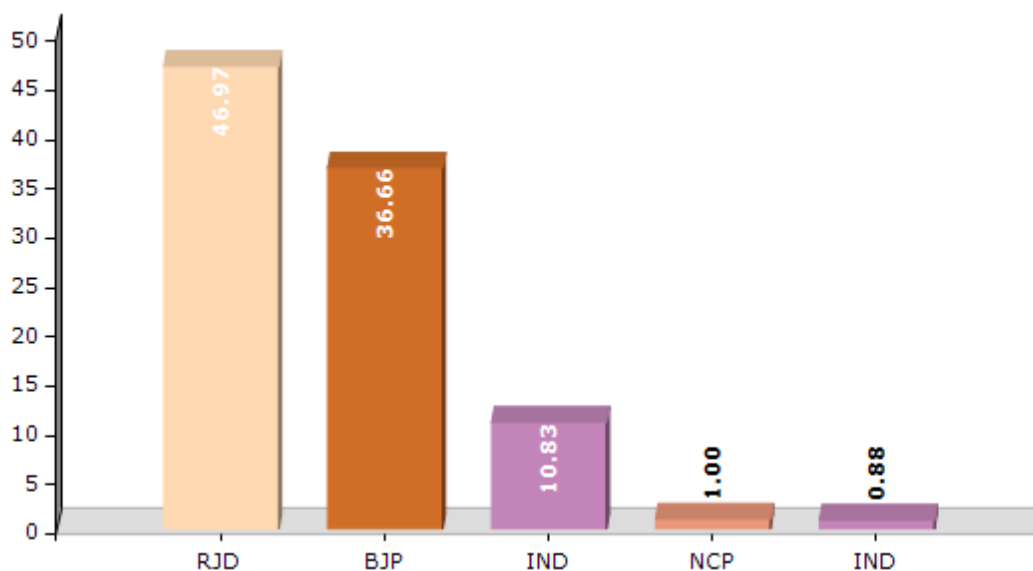


## Historical Summary Election Results

### Summary Result of Assembly Election - 2015

Candidate Name	Party	Votes	Votes %
Faisal Rahman	RJD	87458	46.97
Pawan Kumar Jaiswal	BJP	68261	36.66
Ram Pukar Sinha	IND	20160	10.83
Nek Mohammad	NCP	1868	1
Manjur Ahmad	IND	1637	0.88
Ramkrit Paswan	BSP	1434	0.77
Veerchandra Prasad	RPP	985	0.53
Prabhu Narain	IND	952	0.51
Mohammad Alam	GJDS	480	0.26
Anil Kumar Mehata	IND	431	0.23
	NOTA	2548	1.37

Votes Percentage of Top Parties - 2015



## Polling Station Level Election Results

### Number and Name of Polling Stations (PS) (2020)

Number of Polling Stations	Name of Polling Stations	Number of Polling Stations	Name of Polling Stations
1	Prathmik Vidhyalaya Ghughua Uttar Bhag	14A	Uchcha Vidhyalaya Ghodasahan Purvi Bhag
2	Prathmik Vidhyalaya Ghughua Dakshin Bhag	15	Prathmik Vidhyalaya Baswariya Uttari Bhag
3	Utkramit Madhya Vidhyalaya Kasba	16	Prathmik Vidhyalaya Baswariya Dakshini Bhag
3A	Utkramit Madhya Vidhyalaya Kasba	16A	Prathmik Vidhyalaya Baswariya Dakshini Bhag
4	Prathmik Vidhyalaya Bakuliya Uttar Bhag	17	Prathmik Vidhyalaya Ghodasahan
4A	Prathmik Vidhyalaya Bakuliya Uttar Bhag	17A	Prathmik Vidhyalaya Ghodasahan
5	Prathmik Vidhyalaya Bakuliya Dakshin Bhag	18	Utkramit Madhya Vidhyalaya Bhagwan Pur Kotwa
5A	Prathmik Vidhyalaya Bakuliya Dakshin Bhag	18A	Utkramit Madhya Vidhyalaya Bhagwan Pur Kotwa
6	Prathmik Vidhyalaya Barwakala Uttar Bhag	19	Madhya Vidhyalaya Ghodasahan Uttari Bhag
6A	Prathmik Vidhyalaya Barwakala Uttar Bhag	19A	Madhya Vidhyalaya Ghodasahan Uttari Bhag
7	Prathmik Vidhyalaya Barawakala Dakshin Bhag	20	Madhya Vidhyalaya Ghodasahan Dakshini Bhag
7A	Prathmik Vidhyalaya Barawakala Dakshin Bhag	20A	Madhya Vidhyalaya Ghodasahan Dakshini Bhag
8	Kanya Madhya Vidhyalaya Ghodasahan Uttari Bhag	21	Utkramit Madhya Vidhyalaya Amwa Purvi Bhag
8A	Kanya Madhya Vidhyalaya Ghodasahan Uttari Bhag	21A	Utkramit Madhya Vidhyalaya Amwa Purvi Bhag
9	Kanya Madhya Vidhyalaya Ghodasahan Dachhin Bhag	22	Utkramit Madhya Vidhyalaya Amwa Madhya Bhag
10	Kanya Madhya Vidhyalaya Ghodasahan Madhya Bhag	22A	Utkramit Madhya Vidhyalaya Amwa Madhya Bhag
11	Project Kanya Uchch Vidhyalaya Ghodasahan	23	Utkramit Madhya Vidhyalaya Amwa Pashchim Bhag
11A	Project Kanya Uchch Vidhyalaya Ghodasahan	23A	Utkramit Madhya Vidhyalaya Amwa Pashchim Bhag
12	Uchcha Vidhyalaya Ghodasahan Pashchim Bhag Baya	24	Panchayat Bhawan Vishunpur Uttari Bhag
13	Uchcha Vidhyalaya Ghodasahan Pashchim Bhag Daya	24A	Panchayat Bhawan Vishunpur Uttari Bhag
14	Uchcha Vidhyalaya Ghodasahan Purvi Bhag	25	Panchayat Bhawan Vishunpur Dakshini Bhag

Contd....

## Polling Station Level Election Results

### Polling Station-wise Votes Secured by Overall Top Five Parties in Dhaka Assembly in Assembly Election (AE) under Sheohar Parliamentary Constituency in Bihar (2020)

Number of Polling Station	Winner - Pawan Kumar Jaiswal (BJP)	Runner-up - Faisal Rahman (RJD)	3rd - Ram Pukar Sinha (RLSP)	4th - Md Salim Mansuri (IND)	5th - Abhijit Singh (JAPL)	NOTA	Other	Total Votes Secured
22	182	116	50	2	3	11	9	373
22A	254	94	16	3	0	8	8	383
23	239	45	5	2	0	8	2	301
23A	129	133	9	7	2	10	13	303
24	207	26	63	0	2	14	6	318
24A	244	30	83	8	5	13	1	384
25	137	49	114	1	1	5	4	311
25A	240	46	99	0	3	13	5	406
26	280	155	111	6	1	13	6	572
27	184	204	28	8	3	9	15	451
27A	244	144	81	6	6	6	6	493
28	246	190	134	3	1	23	4	601
29	204	24	97	0	4	10	4	343
29A	166	90	154	7	1	14	7	439
30	270	152	176	7	0	9	9	623
31	189	27	171	2	2	15	9	415
31A	197	61	160	1	2	19	5	445
32	141	48	149	1	2	17	15	373
32A	220	40	82	1	0	6	3	352
33	272	18	78	1	5	21	8	403
33A	164	94	190	8	3	16	10	485
34	327	11	85	2	4	8	5	442
34A	244	38	158	2	15	19	5	481
35	347	61	60	1	18	10	4	501
35A	184	59	246	6	17	9	4	525
36	301	44	175	7	7	33	15	582
37	395	94	5	7	1	19	5	526
38	462	236	13	1	1	9	8	730
39	230	123	36	3	6	7	5	410
39A	240	119	47	4	4	28	5	447
40	244	119	15	0	1	0	3	382
40A	82	244	27	4	8	8	3	376
41	63	242	29	4	3	8	4	353
41A	174	182	18	2	1	3	2	382
42	225	129	8	2	63	4	18	449

Contd....

## Polling Station Level Election Results

### Winner, Runner-up and 3rd Party Position & Winning Margin According to Polling Stations in Dhaka Assembly in Assembly Election (AE) under Sheohar Parliamentary Constituency in Bihar (2020)

Polling Station Number	Winner Party	Winner Votes (%)	Runner-up Party	Runner-up Votes (%)	Winning Margin Votes (%)	Third Party	Third Party Votes (%)	Other Votes (%)
42A	BJP	232 (53.7)	RJD	103 (23.84)	129 (29.86)	JAPL	70 (16.2)	27 (6.25)
43	RJD	414 (68.89)	BJP	88 (14.64)	326 (54.25)	JAPL	61 (10.15)	38 (6.32)
44	BJP	191 (41.52)	RJD	166 (36.09)	25 (5.43)	RLSP	85 (18.48)	18 (3.91)
44A	RJD	320 (58.82)	BJP	180 (33.09)	140 (25.73)	RLSP	24 (4.41)	20 (3.68)
45	BJP	232 (58.29)	RJD	147 (36.93)	85 (21.36)	JAPL	7 (1.76)	12 (3.02)
45A	BJP	383 (78.97)	RJD	90 (18.56)	293 (60.41)	IND (MSM)	4 (0.82)	8 (1.65)
46	BJP	215 (54.29)	RJD	112 (28.28)	103 (26.01)	RLSP	49 (12.37)	20 (5.05)
46A	BJP	319 (81.38)	RJD	57 (14.54)	262 (66.84)	IND (MSM)	4 (1.02)	12 (3.06)
47	BJP	366 (80.44)	RJD	75 (16.48)	291 (63.96)	RLSP	5 (1.1)	9 (1.98)
48	BJP	229 (52.05)	RJD	188 (42.73)	41 (9.32)	RLSP	5 (1.14)	18 (4.09)
48A	BJP	276 (63.16)	RJD	134 (30.66)	142 (32.5)	RLSP	5 (1.14)	22 (5.03)
49	BJP	284 (66.98)	RJD	93 (21.93)	191 (45.05)	RLSP	14 (3.3)	33 (7.78)
49A	BJP	379 (89.39)	RJD	28 (6.6)	351 (82.79)	RLSP	3 (0.71)	14 (3.3)
50	BJP	191 (62.21)	RJD	88 (28.66)	103 (33.55)	RLSP	12 (3.91)	16 (5.21)
50A	BJP	251 (73.18)	RJD	78 (22.74)	173 (50.44)	RLSP	3 (0.87)	11 (3.21)
51	BJP	258 (47.34)	RJD	250 (45.87)	8 (1.47)	IND (MSM)	9 (1.65)	28 (5.14)
52	RJD	310 (62.12)	BJP	151 (30.26)	159 (31.86)	IND (MSM)	16 (3.21)	22 (4.41)
53	BJP	253 (59.67)	RLSP	106 (25)	147 (34.67)	RJD	26 (6.13)	39 (9.2)
53A	BJP	354 (74.84)	RLSP	54 (11.42)	300 (63.42)	RJD	53 (11.21)	12 (2.54)
54	RJD	176 (47.44)	BJP	163 (43.94)	13 (3.5)	IND (MSM)	7 (1.89)	25 (6.74)
54A	RJD	362 (75.42)	BJP	90 (18.75)	272 (56.67)	RLSP	8 (1.67)	20 (4.17)
55	BJP	305 (86.65)	RJD	32 (9.09)	273 (77.56)	RLSP	9 (2.56)	6 (1.7)
55A	BJP	249 (65.18)	RLSP	75 (19.63)	174 (45.55)	RJD	29 (7.59)	29 (7.59)
56	BJP	285 (64.04)	RLSP	85 (19.1)	200 (44.94)	RJD	64 (14.38)	11 (2.47)
56A	BJP	288 (56.14)	RLSP	121 (23.59)	167 (32.55)	RJD	54 (10.53)	50 (9.75)
57	RJD	249 (47.61)	BJP	136 (26)	113 (21.61)	RLSP	89 (17.02)	49 (9.37)
57A	RLSP	190 (36.26)	BJP	154 (29.39)	36 (6.87)	RJD	143 (27.29)	37 (7.06)
58	RJD	433 (70.06)	BJP	156 (25.24)	277 (44.82)	IND (MSM)	8 (1.29)	21 (3.4)
59	BJP	313 (61.98)	RJD	165 (32.67)	148 (29.31)	JAPL	14 (2.77)	13 (2.57)
60	RJD	210 (47.3)	BJP	182 (40.99)	28 (6.31)	RLSP	40 (9.01)	12 (2.7)
60A	RJD	315 (67.02)	BJP	110 (23.4)	205 (43.62)	RLSP	34 (7.23)	11 (2.34)
61	BJP	367 (85.95)	RJD	48 (11.24)	319 (74.71)	IND (MSM)	3 (0.7)	9 (2.11)
61A	BJP	352 (83.81)	RJD	52 (12.38)	300 (71.43)	RLSP	7 (1.67)	9 (2.14)
62	BJP	433 (83.11)	RJD	74 (14.2)	359 (68.91)	IND (MSM)	4 (0.77)	10 (1.92)
63	BJP	224 (58.18)	RJD	106 (27.53)	118 (30.65)	RLSP	41 (10.65)	14 (3.64)

Contd....

## Socio-Economic Amenities - Rural

### Access to Education Facilities

Particulars	Number of Villages (% of Population)				
	Available	Not Available	If Not Available (Distance of Nearest Facility)		
			A	B	C
Govt. Primary School	87 (100)	0 (0)	0 (0)	0 (0)	0 (0)
Private Primary School	32 (47)	55 (53)	0 (0)	0 (0)	0 (0)
Govt. Middle School	66 (86)	21 (14)	16 (12)	2 (1)	0 (0)
Private Middle School	7 (11)	80 (89)	0 (0)	0 (0)	0 (0)
Govt. Secondary School	14 (28)	73 (72)	17 (18)	40 (38)	15 (15)
Private Secondary School	2 (5)	85 (95)	0 (0)	0 (0)	0 (0)
Govt. Senior Secondary School	2 (4)	85 (96)	7 (11)	31 (32)	47 (53)
Private Senior Secondary School	0 (0)	87 (100)	0 (0)	0 (0)	0 (0)
Govt. Arts and Science Degree College	1 (2)	86 (98)	1 (2)	39 (45)	46 (51)
Private Arts and Science Degree College	0 (0)	87 (100)	0 (0)	0 (0)	0 (0)
Govt. Engineering College	0 (0)	87 (100)	0 (0)	0 (0)	0 (0)
Private Engineering College	0 (0)	87 (100)	0 (0)	0 (0)	87 (100)
Govt. Medicine College	0 (0)	87 (100)	0 (0)	0 (0)	87 (100)
Private Medicine College	0 (0)	87 (100)	0 (0)	0 (0)	0 (0)
Govt. Management Institute	0 (0)	87 (100)	0 (0)	0 (0)	87 (100)
Private Management Institute	0 (0)	87 (100)	0 (0)	0 (0)	0 (0)
Govt. Polytechnic	0 (0)	87 (100)	0 (0)	0 (0)	87 (100)
Private Polytechnic	0 (0)	87 (100)	0 (0)	0 (0)	0 (0)
Govt. Vocational Training School/ITI	0 (0)	87 (100)	0 (0)	0 (0)	87 (100)
Private Vocational Training School/ITI	0 (0)	87 (100)	0 (0)	0 (0)	0 (0)
Govt. Non Formal Training Centre	0 (0)	87 (100)	0 (0)	0 (0)	87 (100)
Private Non Formal Training Centre	0 (0)	87 (100)	0 (0)	0 (0)	0 (0)
Govt. School For Disabled	0 (0)	87 (100)	0 (0)	0 (0)	86 (99)
Private School For Disabled	1 (1)	86 (99)	0 (0)	0 (0)	0 (0)
Government Others	60 (59)	27 (41)	0 (0)	0 (0)	0 (0)
Private Others	1 (2)	86 (98)	0 (0)	0 (0)	0 (0)

Note : Distance A : Less than 5 km; B : Between 5-10 km; C : 10+ km.; Source : Data Analysis is based on 2011 Census.

## DISCLAIMER

The Terms of Use and Disclaimer of Datanet India Private Limited (hereinafter referred to as "Datanet") for use of this analysis report of **Dhaka Assembly Constituency (Dhaka Vidhan Sabha) :-**

1. **Assembly Factbook™** is a Registered Trade Mark owned by Datanet.
2. All the maps are sketched and graphical representation only and have not been drawn to the scale and also not to represent the actual geographical area or boundary of the unit.
3. The data for the aforesaid analysis is based on authentic sources and has been culled from the various publications of Census, CSO and NSSO for district and block level data, various central and state government departments, Central & State Elections Commissions and the concerned Returning Officers' releases, Electoral Rolls, Election results and allied publications, internal assessment, surveys, estimates and analysis. Therefore, certain adjustment of data at micro level may have been done to arrive closer to the macro data.
4. Data have been provided on an "As Is" and "As AVAILABLE" basis
5. The colours shown in the maps or diagram and charts of a particular party, alliance or AC are indicative and do not represent them.
6. This publication which includes maps, sheets, graphs and data would be the property under copyright of Datanet only. The user may use these for its internal study, analysis and research purposes. It's public display, re-selling or any commercial uses by the user are not allowed.
7. Datanet has taken due care and caution in compilation and processing of data and allied information, but does not guarantee the accuracy, adequacy or completeness of any information/analysis and will be not responsible for any errors or omissions or for the results obtained from the use of such information/analysis.
8. All the contents for the publication have been culled from various authentic sources and Datanet reasonably believes such sources to be reliable, but does not make any representations, express or implied as to the accuracy or fitness of use of such information. The information or contents of the information/analysis do not constitute advice and should not be relied upon in making (or refraining from making) any decision. Any reliance placed upon the information provided by Datanet is the sole responsibility and strictly at the user's risk.
9. In no event will Datanet be liable for any damages (including, without limitation, damages for loss of business projects, or loss of profits) arising in contract, tort or otherwise from the use of or inability to use any of its contents, or from any action taken (or refrained from being taken) as a result of using the analysis or any of its contents. Datanet its directors, owners, editors, officials, employees, distributor and agents or any associate will not be liable for any errors in the information contained or any consequences arising from the use of the contents of the provided information/analysis.
10. If any provision of these terms and conditions is held invalid or illegal or unenforceable for any reason by any court of competent jurisdiction, such provision shall be severed and the remainder of provisions of the terms and conditions shall continue in full force and effect as if the Term of Use had been executed with the invalid, illegal or unenforceable provision eliminated.
11. If there are any discrepancies in the information provided, please bring it to attention of Datanet for suitable rectification measures.

**Buy Online This Complete Book At**  
**Datanet India eBooks Store**

[www.indiastatpublications.com](http://www.indiastatpublications.com)

or go directly at

[http://www.indiastatpublications.com/  
Assembly\\_factbook/Bihar/Sheohar/ Dhaka](http://www.indiastatpublications.com/Assembly_factbook/Bihar/Sheohar/Dhaka)

 **india**stat**elections**

ISBN : 978-93-5313-074-9

