



Bihar

# Assembly Factbook™

Bajpatti Assembly Constituency



Key Electoral Data of Bajpatti  
Assembly Constituency (Vidhan Sabha)

Bihar

# Assembly Factbook™

Bajpatti Assembly Constituency



Bajpatti Vidhan Sabha

## **Editor & Director**

Dr. R.K. Thukral

## **Research Editor**

Dr. Shafeeq Rahman

## **Compiled, Researched and Published by Datanet India Pvt. Ltd.**

D-100, 1st Floor,

Okhla Industrial Area, Phase-I,  
New Delhi- 110020.

Ph.: 91-11- 43580781-84

Email : support@indiastatpublications.com

Website : www.indiastatelections.com

## **Online Book Store :**

www.indiastatpublications.com

**Report No. :** AFB/BR-027-0125

**ISBN :** 978-93-5301-004-1

**First Edition :** January, 2018

**Eighth Updated Edition :** January, 2025

**Price :** Rs. 11500/-

US\$ 310

**© Datanet India Pvt. Ltd.**

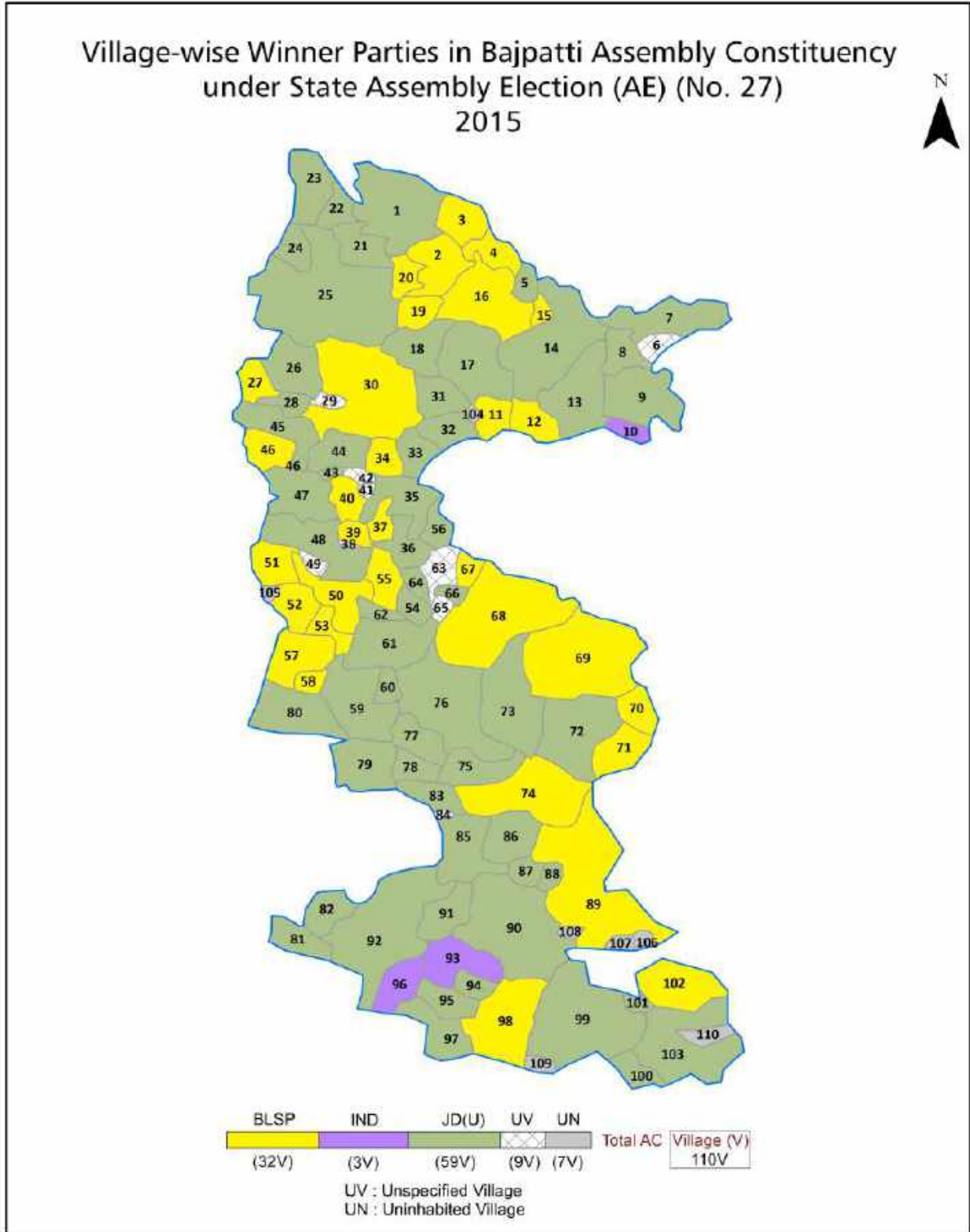
All rights reserved. No part of this book may be reproduced, stored in a retrieval system or transmitted in any form or by any means, mechanical photocopying, photographing, scanning, recording or otherwise without the prior written permission of the publisher. Please refer to Disclaimer at page no. 214 for the use of this publication.

Printed in India

# Contents

No.	Particulars	Page No.
	<b>Introduction</b>	
1	Assembly Constituency - (Vidhan Sabha) at a Glance   Features of Assembly as per Delimitation Commission of India (2008)	1-2
	<b>Location and Political Maps</b>	
2	Location Map   Boundaries of Assembly Constituency - (Vidhan Sabha in District   Boundaries of Assembly Constituency under Parliamentary Constituency - (Lok Sabha)   Village-wise Winner Parties- 2024, 2020, 2019, 2015, 2014 and 2010	3-11
	<b>Administrative Setup (2011)</b>	
3	District   Sub-district   Towns   Villages   Inhabited Villages   Uninhabited Villages   Village Panchayat   Intermediate Panchayat	11-17
	<b>Demographics (2011)</b>	
4	Population   Households   Rural/Urban Population   Villages by Population Size   Sex Ratio (Total & 0-6 Years)   Religious Population   Social Population   Literacy Rate	18-19
	<b>Electoral Features</b>	
5	Important Dates of Last Elections Held   Electors by Gender   Service Electors   Voters   Voters Turnout   Polling Stations & Average Number of Electors per Polling Station   Electors by Age Group   Present Elected Representatives	20-25
	<b>Historical Summary Election Results</b>	
6	Vote Share of Major Parties   Winning Margin (Number & Percentage   Polarity of Parties   Summary Result of Assembly Segment of Parliamentary Elections 2024, 2019, 2014 and 2009   Summary Result of Assembly Elections 2020, 2015 and 2010	26-35
	<b>Polling Station Level Election Results</b>	
7	Name and Number of Polling Station 2024, 2020, 2019, 2015, 2014 and 2010   Polling Station-wise Electors, Voters & Voters Turnout 2024, 2020, 2019, 2015, 2014 and 2010   Polling Station wise Elections Results 2024, 2020, 2019, 2015, 2014 and 2010	36-193
	<b>Share of Assembly Constituency</b>	
8	Share of Assembly Constituency - (Vidhan Sabha) in State, District and Parliamentary Constituency - (Lok Sabha)	194
	<b>Socio-Economic Amenities (2011)</b>	
9	Access to Administrative Units   Agricultural, Manufacturing and Industrial Commodities   Demographic Indicators   Education   Health & Manpower   Drinking Water Supply   Sanitation   Entertainment and Recreations Infrastructure   Power   Food Allocation Distribution and Marketing of Agriculture Commodities Infrastructure   Transport and Road Infrastructure   Communication   Banking and Financial Services   Land Use   Irrigation Source	196-210
10	<b>Abbreviation &amp; Sources</b>	211-213
11	<b>Disclaimer</b>	214

Location & Political Map



## Administrative Setup

### List of Village Panchayat & Intermediate Panchayat (Block) Name - 2011

Village Name	Village Panchayat Name	Intermediate Panchayat Name
Adhgaon	Birar	Nanpur
Arazi Rakbe Bangaon	Bangaon South	Bajpatti
Baburban	Bajpatti	Bajpatti
Bahera Zahid	Bahera Jahedpur	Nanpur
Bahurar	Dadri	Nanpur
Bajoapatti Narha	Bachopatti	Bajpatti
Bakhri Yusufpur	Bajpatti	Bajpatti
Balasath	Pokharaira	Bokhara
Balha Manorath	Rasalpur	Bajpatti
Banaul	Banual	Bokhara
Bangraha urf Mahindpur	Madhuban Basaha West	Bajpatti
Baragaon	Madhuban Basaha East, Bangaon North, Bangaon South	Bajpatti
Barharwa Hasanpur	Belhiya	Bajpatti
Barhmaul	Sirsi	Nanpur
Bari Phulwaria	Barari Fulwariya	Bajpatti
Basantpur	Pachra Nimahi	Bajpatti
Basaul	Barari Fulwariya	Bajpatti
Basdeopur	Rasalpur	Bajpatti
Basopatti	Dadri	Nanpur
Bazidpur	Bajitpur	Bajpatti
Bazidpur Gorhali	Bazidpur Bhaur	Bokhara
Bazpatti Abidpur	Bajpatti	Bajpatti
Bedaul	Birar	Nanpur
Bela Bahadurpur	Bhadian	Nanpur
Belahia	Belhiya	Bajpatti
Bhadian	Bhadian	Nanpur
Bhagwanpur Chaube	Harpurwa	Bajpatti
Bhaluahi	Bhadian	Nanpur
Bhasopur	Ratwara	Bajpatti

Contd....

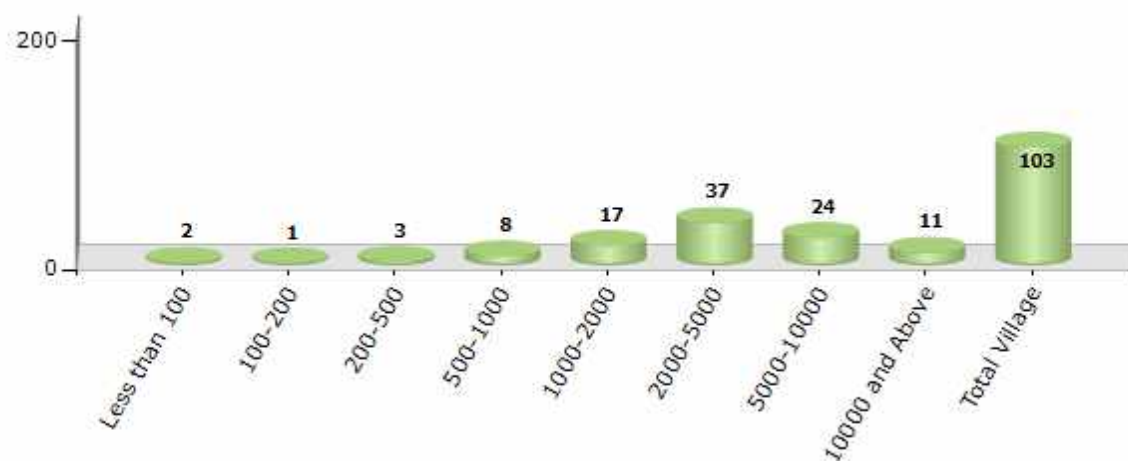


## Demographics

### Number of Villages by Population Size - 2011

Less than 100	100-200	200-500	500-1000	1000-2000	2000-5000	5000-10000	10000 and Above	Total Village
2	1	3	8	17	37	24	11	103

Number of Villages by Population Size - 2011

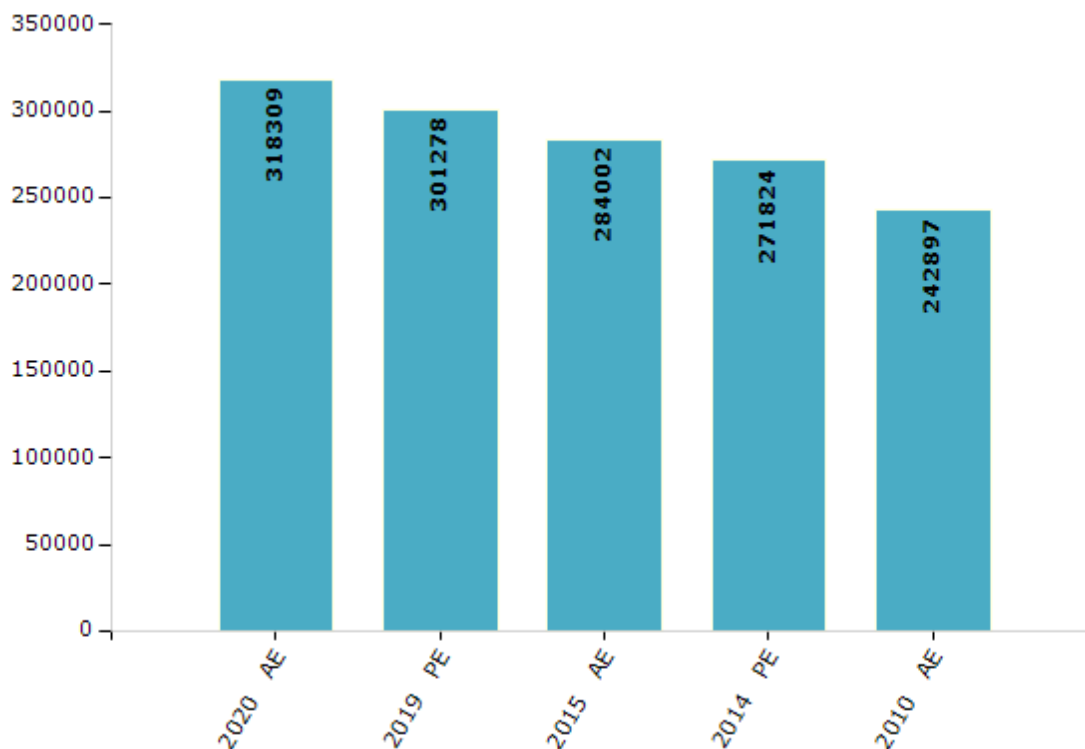


## Electoral Features

### Electors by Male & Female

Year	Male	Female	Others	Total	Year	Male	Female	Others	Total
2020 AE	168855	149449	5	318309	1995 AE	-	-	-	-
2019 PE	160024	141252	2	301278	1990 AE	-	-	-	-
2015 AE	151225	132777	0	284002	1985 AE	-	-	-	-
2014 PE	143824	127995	5	271824	1980 AE	-	-	-	-
2010 AE	129958	112939	0	242897	1977 AE	-	-	-	-
2009 PE	-	-	-	-	1972 AE	-	-	-	-
2005 (Oct) AE	-	-	-	-	1969 AE	-	-	-	-
2005 (Feb) AE	-	-	-	-	1967 AE	-	-	-	-
2004 PE	-	-	-	-	1962 AE	-	-	-	-
2000 AE	-	-	-	-	1957 AE	-	-	-	-
1999 PE	-	-	-	-	1952 AE	-	-	-	-

Number of Electors



**Note :** AE : Assembly Election, PE : Assembly Segment of Parliamentary Election



## Historical Summary Election Results

### Summary Result of Assembly Election - 2015

Candidate Name	Party	Votes	Votes %
Dr. Ranju Geeta	JD(U)	67194	43.3
Rekha Kumari	BLSP	50248	32.38
Rabindra Kumar Shahi	IND	8033	5.18
Vijay Kumar Jha	IND	4190	2.7
Shyam Babu Chaudhary	IND	3372	2.17
Devendra Jha	IND	3339	2.15
Fudan Kumar Jha	IND	1852	1.19
Akhileshwar Kumar	BSP	1624	1.05
Ash Narayan Jha	IND	1588	1.02
Ansar Ahmad	NCP	1512	0.97
Manoj Kumar	JAPL	1287	0.83
Awadhesh Kumar	JMM	1216	0.78
Sanowar Praveen	BMUP	726	0.47
Shailendra Kumar	CPI(ML)(L)	717	0.46
Kundan Kumar Singh	SHS	667	0.43
Shekh Abdus Salam	IND	651	0.42
Rekha Devi	IND	623	0.4
Rekha Devi	IND	516	0.33
M Habibur Rahman	IND	513	0.33
Shankar Ray	GJDS	423	0.27
Md Ashfaque	SP	392	0.25
Ranju Kumari Pathak	NJPI	354	0.23
	NOTA	4138	2.67

## Polling Station Level Election Results

### Number and Name of Polling Stations (PS) (2020)

Number of Polling Stations	Name of Polling Stations	Number of Polling Stations	Name of Polling Stations
1	Rajakiy Madhya Vidyalay, Bangaraha (Dakshini Bhag)	17	Rajakiy Madhya Vidyalay, Bajitapur (Dakshin Bhag)
1A	Rajakiy Madhya Vidyalay, Bangaraha (Dakshini Bhag)	17A	Rajakiy Madhya Vidyalay, Bajitapur (Dakshin Bhag)
2	Rajakiy Madhya Vidyalay, Bangaraha (Uttari Bhag)	18	Rajakiy Madhay Vidyalay Banatara Urdu Purwi Bhag
3	Rajakiy Madhay Vidyalay,Naraharapur	18A	Rajakiy Madhay Vidyalay Banatara Urdu Purwi Bhag
4	Rajakiy Madhya Vidyalay Basaha Kanya	19	Rajakiy Madhay Vidyalay Banatar Urdu (Pashchim Bhag)
5	Rajakiy Prathamik Vidyalay Kachharipur Koriyahi	20	Aaganwadi Kendra Sankhya 18 Bantara
6	Dugdha Sangrahan Kendra Basaha (Uttari Bhag)	21	Rajakiy Madhay Vidyalay Bhikha (Pashchim Bhag)
6A	Dugdha Sangrahan Kendra Basaha (Uttari Bhag)	21A	Rajakiy Madhay Vidyalay Bhikha (Pashchim Bhag)
7	Dugdha Sangrahan Kendra Basaha (Dakshini Bhag)	22	Rajakiy Madhya Vidyalay, Patadaura Utari Bhag
8	Rajkiye Madhya Vidhalay Basaul Urdu Uteri Bhag	23	Rajkiye Madhay Vidhalay Patdaura Dakshini Bhag
9	Rajkiye Madhay Vidhalay Basau Urdu Dakshini Bhag	24	Rajakiy Madhay Vidyalay Mahuain Goat Purvi Bhag
10	Rajakiy Madhya Vidyalay Fulavariya Urdu	25	Rajakiy Madhay Vidyalay Mahuain Goat Paschim Bhag
11	Rajakiy Prathamik Vidyalay Barri (Purwi Bhag)	26	Rajakiy Madhya Vidyalay Sivaipati Purvi Bhag
11A	Rajakiy Prathamik Vidyalay Barri (Purwi Bhag)	27	Rajkiye Madhay Vidhalay Sivaipatti Paschim Bhag
12	Madarasa Faije Aam(Barri Fulavariya) Utari Bhag	28	Rajakiy Madhya Vidyalay Patharahi (Dakshin Bhag)
13	Madarasa Faije Aam(Barri Fulavariya) Dakshini Bhag	28A	Rajakiy Madhya Vidyalay Patharahi (Dakshin Bhag)
14	Rajakiy Madhya Vidhalay, Rayapur (Utari Bhag)	29	Rajakiy Madhya Vidyalay Patharahi (Uttar Bhag)
14A	Rajakiy Madhya Vidhalay, Rayapur (Utari Bhag)	29A	Rajakiy Madhya Vidyalay Patharahi (Uttar Bhag)
15	Rajakiy Madhya Vidyalay, Bajitapur (Uttari Bhag)	30	Samudayik Bhavan, Balabhisava
15A	Rajakiy Madhya Vidyalay, Bajitapur (Uttari Bhag)	30A	Samudayik Bhavan, Balabhisava
16	Rajkiye Madhay Vidhalay Bajitpur Madhay bhag	31	Rajkiye Madhya Vidhalay, Madhuban Got (Purwi Bhag)

Contd....

**Polling Station Level Election Results**

**Polling Station-wise Votes Secured by Overall Top Five Parties in Bajpatti Assembly in Assembly Election (AE) under Sitamarhi Parliamentary Constituency in Bihar (2020)**

Number of Polling Station	Winner - Mukesh Kumar Yadav (RJD)	Runner-up - Dr. Ranju Geeta (JD(U))	3rd - Rekha Kumari (RLSP)	4th - Md. Intakhab Alam (LJP)	5th - Saiyad Neyaz Ahamad (RUC)	NOTA	Other	Total Votes Secured
28	249	50	15	4	5	2	32	357
28A	208	49	18	3	7	2	27	314
29	38	252	24	11	11	7	68	411
29A	50	285	29	6	13	2	29	414
30	214	149	35	5	2	5	44	454
30A	217	80	24	2	3	2	32	360
31	251	56	7	14	5	2	25	360
31A	226	31	2	7	1	0	14	281
32	80	140	6	4	9	0	40	279
32A	120	52	4	2	1	0	33	212
33	317	34	5	26	0	0	34	416
34	214	26	5	10	2	0	26	283
34A	119	25	4	10	1	1	14	174
35	313	15	26	65	8	4	53	484
36	219	39	75	52	2	2	21	410
37	62	190	16	15	13	14	53	363
37A	122	110	26	26	1	2	12	299
38	26	137	77	95	3	1	27	366
38A	53	121	127	8	3	11	14	337
39	230	24	18	45	2	1	17	337
39A	122	83	58	54	4	3	17	341
40	121	118	42	29	1	2	22	335
40A	197	40	30	26	4	6	13	316
41	201	3	4	43	3	0	32	286
41A	225	4	3	77	0	0	17	326
42	182	269	52	7	3	3	13	529
43	342	83	11	15	4	0	35	490
44	192	172	13	3	8	5	25	418
45	119	246	20	1	7	3	34	430
46	47	238	47	1	2	0	15	350
46A	48	181	36	4	4	2	21	296
47	81	352	77	2	5	6	44	567
48	29	201	177	1	2	5	16	431
48A	69	133	107	4	1	1	9	324
49	152	237	79	3	10	5	37	523

Contd....

**Polling Station Level Election Results**

**Winner, Runner-up and 3rd Party Position & Winning Margin According to Polling Stations in Bajpatti Assembly in Assembly Election (AE) under Sitamarhi Parliamentary Constituency in Bihar (2020)**

Polling Station Number	Winner Party	Winner Votes (%)	Runner-up Party	Runner-up Votes (%)	Winning Margin Votes (%)	Third Party	Third Party Votes (%)	Other Votes (%)
50	JD(U)	280 (54.69)	RLSP	104 (20.31)	176 (34.38)	RJD	80 (15.63)	48 (9.38)
51	JD(U)	232 (65.35)	RLSP	43 (12.11)	189 (53.24)	RJD	20 (5.63)	60 (16.9)
51A	JD(U)	285 (75)	RJD	26 (6.84)	259 (68.16)	RLSP	19 (5)	50 (13.16)
52	RJD	149 (50.51)	LJP	65 (22.03)	84 (28.48)	RLSP	27 (9.15)	54 (18.31)
52A	RJD	217 (88.21)	LJP	7 (2.85)	210 (85.36)	IND (MI)	6 (2.44)	16 (6.5)
53	JD(U)	238 (57.21)	RJD	89 (21.39)	149 (35.82)	RLSP	29 (6.97)	60 (14.42)
53A	JD(U)	169 (56.15)	RJD	90 (29.9)	79 (26.25)	RLSP	21 (6.98)	21 (6.98)
54	JD(U)	234 (67.63)	RJD	53 (15.32)	181 (52.31)	RLSP	30 (8.67)	29 (8.38)
54A	RJD	150 (47.32)	JD(U)	122 (38.49)	28 (8.83)	RLSP	24 (7.57)	21 (6.62)
55	RJD	223 (57.47)	JD(U)	112 (28.87)	111 (28.6)	LJP	18 (4.64)	35 (9.02)
55A	RJD	169 (60.79)	JD(U)	83 (29.86)	86 (30.93)	RLSP	16 (5.76)	10 (3.6)
56	JD(U)	183 (55.29)	RJD	55 (16.62)	128 (38.67)	RLSP	31 (9.37)	62 (18.73)
56A	JD(U)	181 (52.01)	RJD	61 (17.53)	120 (34.48)	RLSP	56 (16.09)	50 (14.37)
57	JD(U)	199 (62.19)	RJD	63 (19.69)	136 (42.5)	RLSP	24 (7.5)	34 (10.63)
57A	JD(U)	201 (57.59)	RJD	91 (26.07)	110 (31.52)	RLSP	36 (10.32)	21 (6.02)
58	RJD	246 (47.31)	JD(U)	174 (33.46)	72 (13.85)	RLSP	45 (8.65)	55 (10.58)
58A	JD(U)	207 (49.17)	RJD	146 (34.68)	61 (14.49)	RLSP	32 (7.6)	36 (8.55)
59	RJD	297 (78.57)	JD(U)	37 (9.79)	260 (68.78)	RLSP	21 (5.56)	23 (6.08)
59A	RJD	226 (70.85)	JD(U)	62 (19.44)	164 (51.41)	RLSP	24 (7.52)	7 (2.19)
60	JD(U)	190 (48.84)	RJD	93 (23.91)	97 (24.93)	RLSP	63 (16.2)	43 (11.05)
61	JD(U)	204 (49.64)	RJD	129 (31.39)	75 (18.25)	RLSP	20 (4.87)	58 (14.11)
62	JD(U)	227 (53.92)	RJD	58 (13.78)	169 (40.14)	LJP	49 (11.64)	87 (20.67)
62A	JD(U)	236 (61.14)	RJD	80 (20.73)	156 (40.41)	RLSP	21 (5.44)	49 (12.69)
63	JD(U)	198 (64.92)	RJD	72 (23.61)	126 (41.31)	RLSP	10 (3.28)	25 (8.2)
64	RJD	284 (85.54)	JD(U)	31 (9.34)	253 (76.2)	LJP	5 (1.51)	12 (3.61)
64A	RJD	214 (64.07)	JD(U)	76 (22.75)	138 (41.32)	IND (MKY)	11 (3.29)	33 (9.88)
65	RJD	317 (69.37)	JD(U)	112 (24.51)	205 (44.86)	RLSP	11 (2.41)	17 (3.72)
65A	RJD	236 (54.76)	JD(U)	130 (30.16)	106 (24.6)	RLSP	28 (6.5)	37 (8.58)
66	JD(U)	258 (56.09)	RJD	114 (24.78)	144 (31.31)	RUC	20 (4.35)	68 (14.78)
66A	JD(U)	144 (41.98)	RJD	115 (33.53)	29 (8.45)	RLSP	32 (9.33)	52 (15.16)
67	JD(U)	224 (50.91)	RJD	141 (32.05)	83 (18.86)	RUC	15 (3.41)	60 (13.64)
67A	RJD	122 (42.81)	JD(U)	117 (41.05)	5 (1.76)	RLSP	12 (4.21)	34 (11.93)
68	JD(U)	155 (59.39)	RJD	71 (27.2)	84 (32.19)	RLSP	8 (3.07)	27 (10.34)
68A	JD(U)	217 (54.52)	RJD	83 (20.85)	134 (33.67)	RLSP	25 (6.28)	73 (18.34)
69	JD(U)	295 (54.13)	RJD	101 (18.53)	194 (35.6)	RUC	31 (5.69)	118 (21.65)

Contd....

## Socio-Economic Amenities - Rural

### Access to Education Facilities

Particulars	Number of Villages (% of Population)				
	Available	Not Available	If Not Available (Distance of Nearest Facility)		
			A	B	C
Govt. Primary School	98 (100)	5 (0)	4 (0)	0 (0)	0 (0)
Private Primary School	10 (16)	93 (84)	0 (0)	0 (0)	0 (0)
Govt. Middle School	75 (92)	28 (8)	24 (7)	3 (1)	0 (0)
Private Middle School	3 (10)	100 (90)	1 (0)	0 (0)	0 (0)
Govt. Secondary School	8 (15)	95 (85)	0 (0)	53 (39)	39 (43)
Private Secondary School	1 (1)	102 (99)	0 (0)	0 (0)	2 (2)
Govt. Senior Secondary School	2 (6)	101 (94)	4 (3)	19 (17)	76 (73)
Private Senior Secondary School	2 (2)	101 (98)	0 (0)	0 (0)	0 (0)
Govt. Arts and Science Degree College	1 (1)	102 (99)	0 (0)	31 (31)	68 (65)
Private Arts and Science Degree College	3 (3)	100 (97)	0 (0)	0 (0)	1 (0)
Govt. Engineering College	0 (0)	103 (100)	0 (0)	0 (0)	0 (0)
Private Engineering College	0 (0)	103 (100)	0 (0)	0 (0)	103 (100)
Govt. Medicine College	0 (0)	103 (100)	0 (0)	0 (0)	103 (100)
Private Medicine College	0 (0)	103 (100)	0 (0)	0 (0)	0 (0)
Govt. Management Institute	0 (0)	103 (100)	0 (0)	0 (0)	103 (100)
Private Management Institute	0 (0)	103 (100)	0 (0)	0 (0)	0 (0)
Govt. Polytechnic	0 (0)	103 (100)	0 (0)	30 (31)	73 (69)
Private Polytechnic	0 (0)	103 (100)	0 (0)	0 (0)	0 (0)
Govt. Vocational Training School/ITI	1 (1)	102 (99)	0 (0)	29 (31)	73 (69)
Private Vocational Training School/ITI	0 (0)	103 (100)	0 (0)	0 (0)	0 (0)
Govt. Non Formal Training Centre	6 (7)	97 (93)	0 (0)	29 (31)	66 (62)
Private Non Formal Training Centre	5 (2)	98 (98)	0 (0)	0 (0)	0 (0)
Govt. School For Disabled	0 (0)	103 (100)	0 (0)	0 (0)	0 (0)
Private School For Disabled	1 (1)	102 (99)	0 (0)	30 (31)	72 (68)
Government Others	5 (5)	98 (95)	0 (0)	0 (0)	22 (15)
Private Others	26 (33)	77 (67)	0 (0)	0 (0)	0 (0)

Note : Distance A : Less than 5 km; B : Between 5-10 km; C : 10+ km.; Source : Data Analysis is based on 2011 Census.

## DISCLAIMER

The Terms of Use and Disclaimer of Datanet India Private Limited (hereinafter referred to as "Datanet") for use of this analysis report of **Bajpatti Assembly Constituency (Bajpatti Vidhan Sabha) :-**

1. **Assembly Factbook™** is a Registered Trade Mark owned by Datanet.
2. All the maps are sketched and graphical representation only and have not been drawn to the scale and also not to represent the actual geographical area or boundary of the unit.
3. The data for the aforesaid analysis is based on authentic sources and has been culled from the various publications of Census, CSO and NSSO for district and block level data, various central and state government departments, Central & State Elections Commissions and the concerned Returning Officers' releases, Electoral Rolls, Election results and allied publications, internal assessment, surveys, estimates and analysis. Therefore, certain adjustment of data at micro level may have been done to arrive closer to the macro data.
4. Data have been provided on an "As Is" and "As AVAILABLE" basis
5. The colours shown in the maps or diagram and charts of a particular party, alliance or AC are indicative and do not represent them.
6. This publication which includes maps, sheets, graphs and data would be the property under copyright of Datanet only. The user may use these for its internal study, analysis and research purposes. It's public display, re-selling or any commercial uses by the user are not allowed.
7. Datanet has taken due care and caution in compilation and processing of data and allied information, but does not guarantee the accuracy, adequacy or completeness of any information/analysis and will be not responsible for any errors or omissions or for the results obtained from the use of such information/analysis.
8. All the contents for the publication have been culled from various authentic sources and Datanet reasonably believes such sources to be reliable, but does not make any representations, express or implied as to the accuracy or fitness of use of such information. The information or contents of the information/analysis do not constitute advice and should not be relied upon in making (or refraining from making) any decision. Any reliance placed upon the information provided by Datanet is the sole responsibility and strictly at the user's risk.
9. In no event will Datanet be liable for any damages (including, without limitation, damages for loss of business projects, or loss of profits) arising in contract, tort or otherwise from the use of or inability to use any of its contents, or from any action taken (or refrained from being taken) as a result of using the analysis or any of its contents. Datanet its directors, owners, editors, officials, employees, distributor and agents or any associate will not be liable for any errors in the information contained or any consequences arising from the use of the contents of the provided information/analysis.
10. If any provision of these terms and conditions is held invalid or illegal or unenforceable for any reason by any court of competent jurisdiction, such provision shall be severed and the remainder of provisions of the terms and conditions shall continue in full force and effect as if the Term of Use had been executed with the invalid, illegal or unenforceable provision eliminated.
11. If there are any discrepancies in the information provided, please bring it to attention of Datanet for suitable rectification measures.

**Buy Online This Complete Book At**  
**Datanet India eBooks Store**

[www.indiastatpublications.com](http://www.indiastatpublications.com)

or go directly at

[http://www.indiastatpublications.com/  
Assembly\\_factbook/Bihar/Sitamarhi/ Bajpatti](http://www.indiastatpublications.com/Assembly_factbook/Bihar/Sitamarhi/Bajpatti)



 **india**stat**elections**

ISBN : 978-93-5301-004-1

