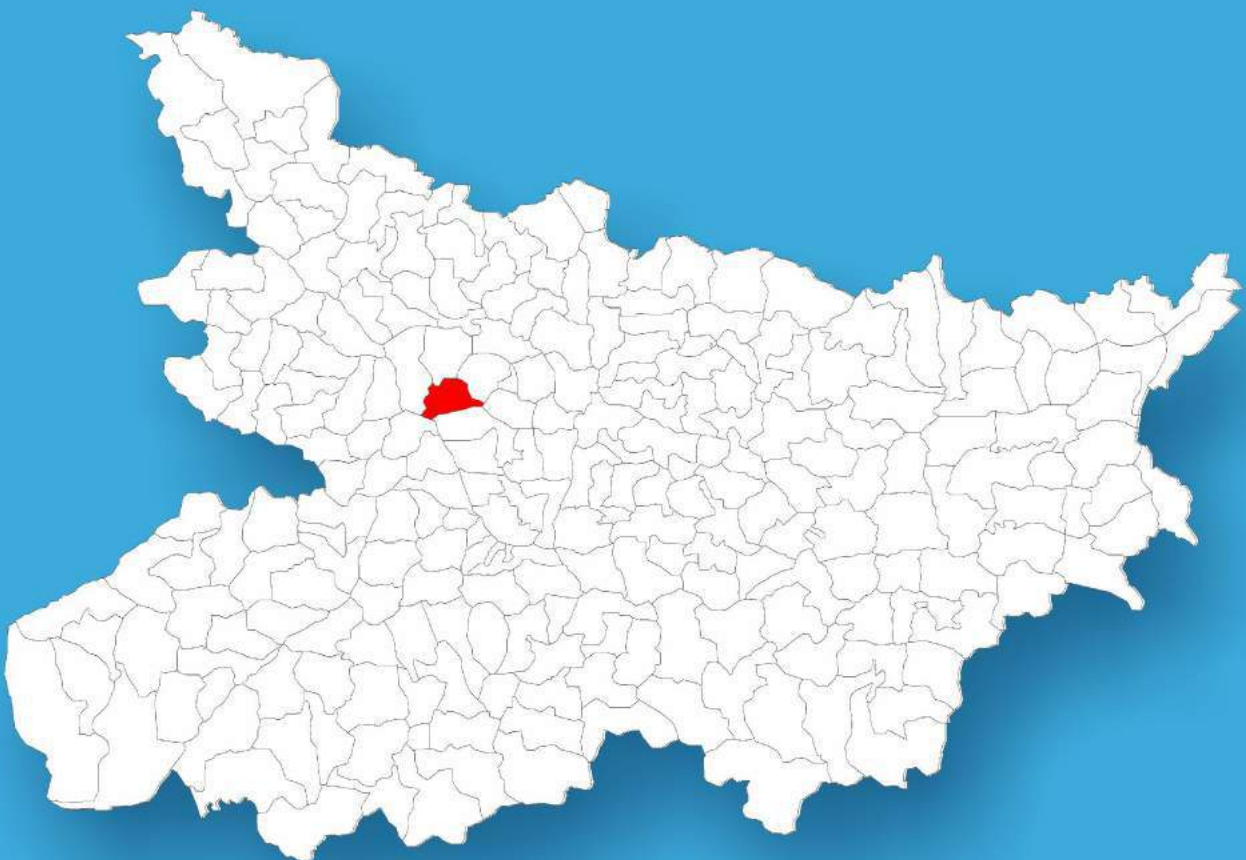




Bihar

# Assembly Factbook™

Paroo Assembly Constituency



Key Electoral Data of Paroo  
Assembly Constituency (Vidhan Sabha)

Bihar

# **Assembly Factbook™**

Paroo Assembly Constituency



Paroo Vidhan Sabha

## **Editor & Director**

Dr. R.K. Thukral

## **Research Editor**

Dr. Shafeeq Rahman

## **Compiled, Researched and Published by Datanet India Pvt. Ltd.**

D-100, 1st Floor,

Okhla Industrial Area, Phase-I,  
New Delhi- 110020.

Ph.: 91-11- 43580781-84

Email : support@indiastatpublications.com

Website : www.indiastatelections.com

## **Online Book Store :**

www.indiastatpublications.com

**Report No. :** AFB/BR-097-0125

**ISBN :** 978-93-5313-156-2

**First Edition :** January, 2018

**Eighth Updated Edition :** January, 2025

**Price :** Rs. 11500/-

US\$ 310

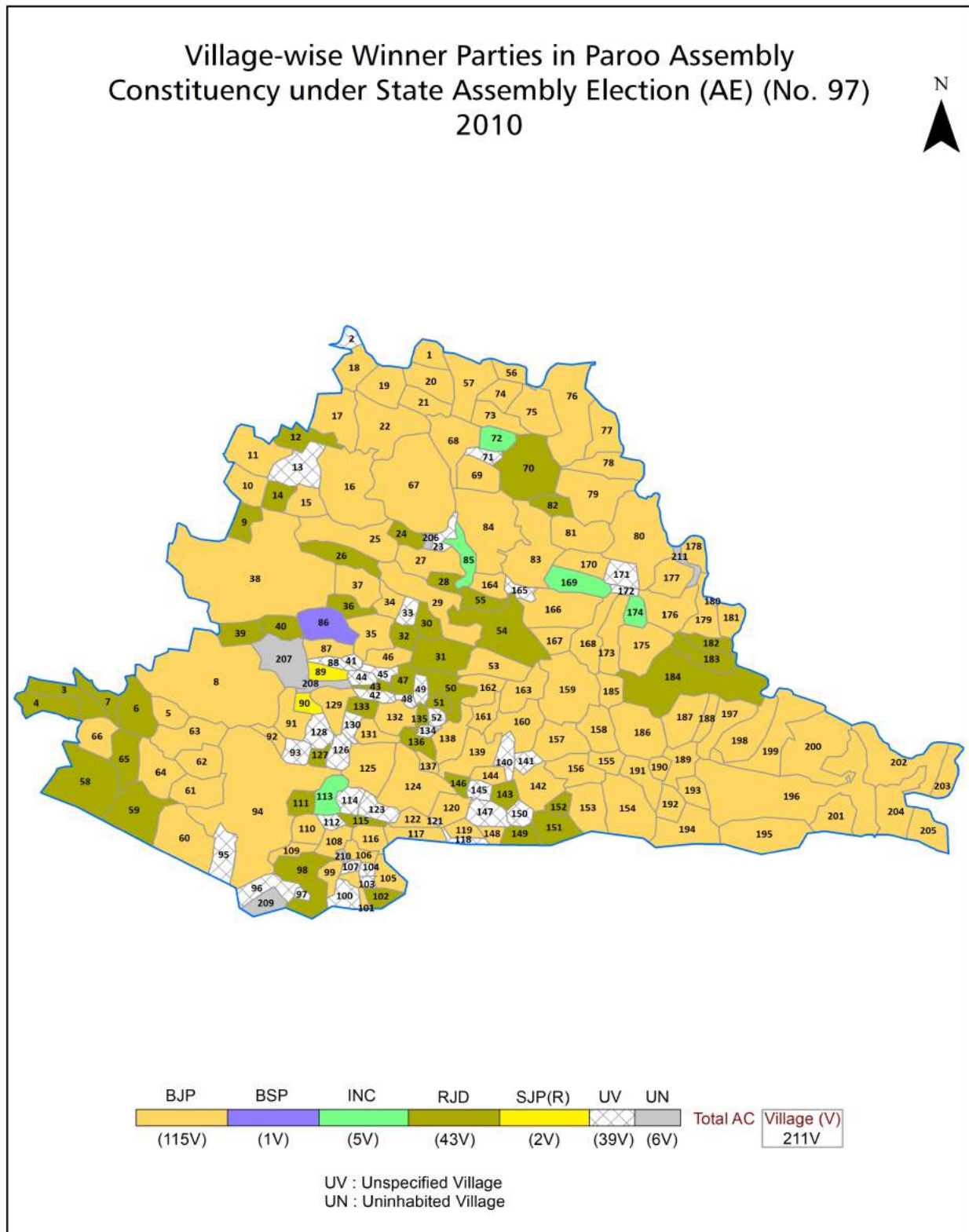
**© Datanet India Pvt. Ltd.**

All rights reserved. No part of this book may be reproduced, stored in a retrieval system or transmitted in any form or by any means, mechanical photocopying, photographing, scanning, recording or otherwise without the prior written permission of the publisher. Please refer to Disclaimer at page no. 239 for the use of this publication.

Printed in India

No.	Particulars	Page No.
	<b>Introduction</b>	
1	Assembly Constituency - (Vidhan Sabha) at a Glance   Features of Assembly as per Delimitation Commission of India (2008)	1-2
	<b>Location and Political Maps</b>	
2	Location Map   Boundaries of Assembly Constituency - (Vidhan Sabha) in District   Boundaries of Assembly Constituency under Parliamentary Constituency - (Lok Sabha)   Village-wise Winner Parties- 2024, 2020, 2019, 2014, 2010 and 2009	3-11
	<b>Administrative Setup (2011)</b>	
3	District   Sub-district   Towns   Villages   Inhabited Villages   Uninhabited Villages   Village Panchayat   Intermediate Panchayat	11-22
	<b>Demographics (2011)</b>	
4	Population   Households   Rural/Urban Population   Villages by Population Size   Sex Ratio (Total & 0-6 Years)   Religious Population   Social Population   Literacy Rate	23-24
	<b>Electoral Features</b>	
5	Important Dates of Last Elections Held   Electors by Gender   Service Electors   Voters   Voters Turnout   Polling Stations & Average Number of Electors per Polling Station   Electors by Age Group   Present Elected Representatives	25-30
	<b>Historical Summary Election Results</b>	
6	Vote Share of Major Parties   Winning Margin (Number & Percentage)   Polarity of Parties   Summary Result of Assembly Segment of Parliamentary Elections 2024, 2019, 2014, 2009, 2004 and 1999   Summary Result of Assembly Elections 2020, 2015, 2010, 2005 (Oct), 2005 (Feb), 2000, 1995, 1990, 1985, 1980, 1977, 1972, 1969, 1967, 1962, 1957 and 1952	31-59
	<b>Polling Station Level Election Results</b>	
7	Name and Number of Polling Station 2024, 2020, 2019, 2014, 2010 and 2009   Polling Station-wise Electors, Voters & Voters Turnout 2024, 2020, 2019, 2014, 2010 and 2009   Polling Station wise Elections Results 2024, 2020, 2019, 2014, 2010 and 2009	60-218
	<b>Share of Assembly Constituency</b>	
8	Share of Assembly Constituency - (Vidhan Sabha) in State, District and Parliamentary Constituency - (Lok Sabha)	219
	<b>Socio-Economic Amenities (2011)</b>	
9	Access to Administrative Units   Agricultural, Manufacturing and Industrial Commodities   Demographic Indicators   Education   Health & Manpower   Drinking Water Supply   Sanitation   Entertainment and Recreations Infrastructure   Power   Food Allocation Distribution and Marketing of Agriculture Commodities Infrastructure   Transport and Road Infrastructure   Communication   Banking and Financial Services   Land Use   Irrigation Source	221-235
10	<b>Abbreviation &amp; Sources</b>	236-238
11	<b>Disclaimer</b>	239

## Location & Political Map



## Administrative Setup

### List of Village Panchayat & Intermediate Panchayat (Block) Name - 2011

Village Name	Village Panchayat Name	Intermediate Panchayat Name
Abhi Chhapra	Bakhra	Saraiya
Abu Chak	Chak Ibrahim	Saraiya
Ajodhpur urf Ibrahimpur	Datapur Panchbhirwa	Saraiya
Amaitha	Amaitha	Saraiya
Amuara Chaube	Amuara Tej Singh	Saraiya
Amuara Tej Singh	Amuara Tej Singh	Saraiya
Anandpur	Manikpur	Saraiya
Anantpur Gangauli	Gorigawan Dih	Saraiya
Arar Lakhmipur	Kolhua	Saraiya
Arupur	Gopi Dhanwat	Saraiya
Atraulia	Gopinathpur Doghra	Saraiya
Azizpur Belwar	Bahilwara Rupnath Dakshni	Saraiya
Baghnagri	Gorigawan Dih	Saraiya
Bahilwara Bhual	Bahilwara Rupnath Uttari	Saraiya
Bahilwara Gobind	Bahilwara Gobind	Saraiya
Bahilwara Rupnath	Bahilwara Rupnath Dakshni	Saraiya
Bakhra	Bakhra	Saraiya
Balurampur urf Tilak Pakri	Madhaul	Saraiya
Banauli urf Rasalpur	Madhaul	Saraiya
Bania	Chak Ibrahim	Saraiya
Banyra Rahi	Berua	Saraiya
Bardaha	Gopi Dhanwat	Saraiya
Barewa	Amaitha	Saraiya
Barhanpura	Bakhra	Saraiya
Basaitha	Basaitha	Saraiya
Basatpur	Reva Basatpur Uttri	Saraiya
Basatpur Paru	Rampur Kesho Urf Malahi	Paroo
Basdeopur	Gopi Dhanwat	Saraiya
Basra Kazi	Khaira	Saraiya

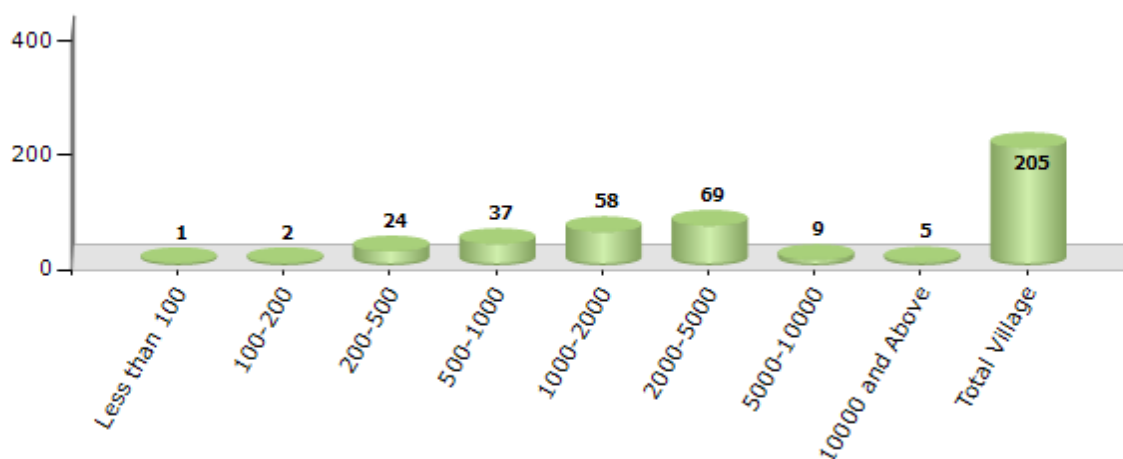
Contd....

## Demographics

### Number of Villages by Population Size - 2011

Less than 100	100-200	200-500	500-1000	1000-2000	2000-5000	5000-10000	10000 and Above	Total Village
1	2	24	37	58	69	9	5	205

Number of Villages by Population Size - 2011

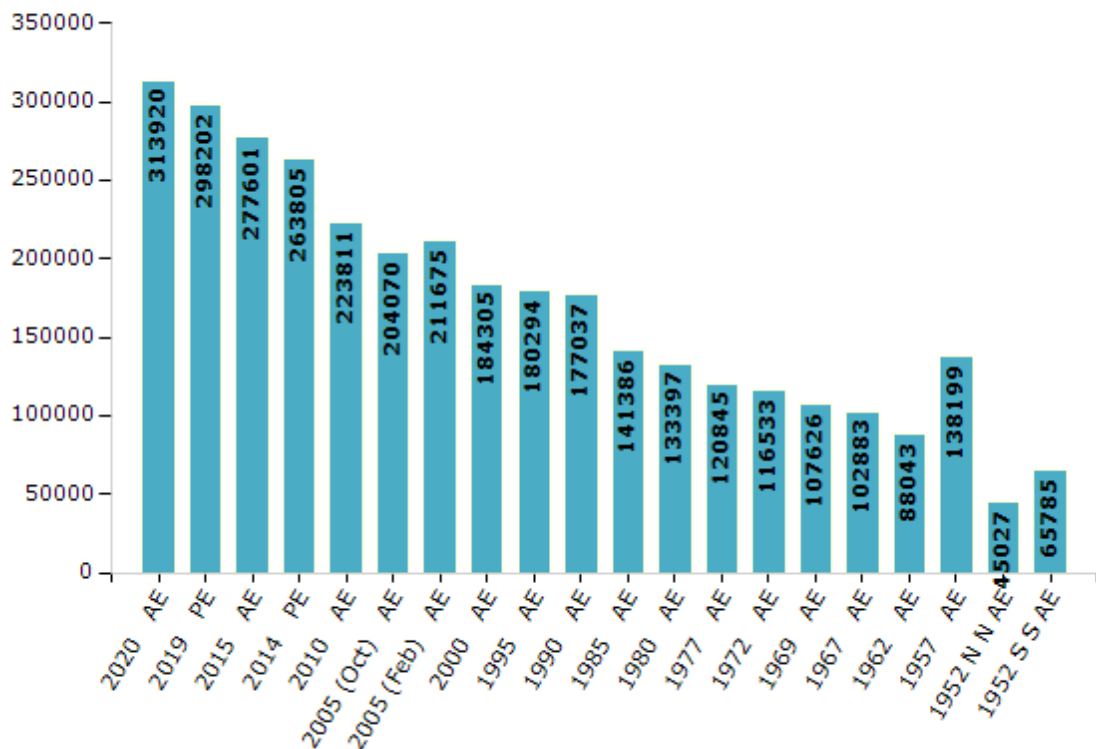


## Electoral Features

### Electors by Male & Female

Year	Male	Female	Others	Total	Year	Male	Female	Others	Total
2020 AE	165328	148584	8	313920	1990 AE	96283	80754	-	177037
2019 PE	159434	138763	5	298202	1985 AE	81240	60146	-	141386
2015 AE	148372	129225	4	277601	1980 AE	70621	62776	-	133397
2014 PE	140066	123734	5	263805	1977 AE	63527	57318	-	120845
2010 AE	118554	105257	0	223811	1972 AE	62744	53789	-	116533
2009 PE	-	-	-	-	1969 AE	55270	52356	-	107626
2005 (Oct) AE	107262	96808	-	204070	1967 AE	-	-	-	102883
2005 (Feb) AE	111598	100077	-	211675	1962 AE	-	-	-	88043
2004 PE	-	-	-	-	1957 AE	-	-	-	138199
2000 AE	96210	88095	-	184305	1952 (N) AE	-	-	-	45027
1999 PE	-	-	-	-	1952 (S) AE	-	-	-	65785
1995 AE	92969	87325	-	180294					

Number of Electors



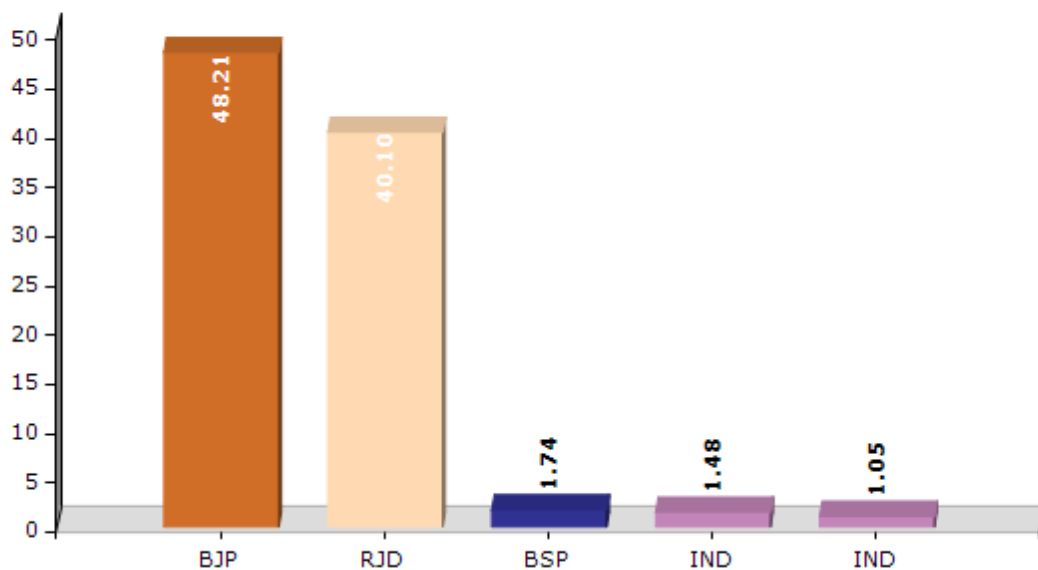
**Note :** AE : Assembly Election, PE : Assembly Segment of Parliamentary Election

## Historical Summary Election Results

### Summary Result of Assembly Election - 2015

Candidate Name	Party	Votes	Votes %
Ashok Kumar Singh	BJP	80445	48.21
Shankar Prasad	RJD	66906	40.1
Phooldeo Sahani	BSP	2899	1.74
Vijay Kumar	IND	2476	1.48
Sikendar Ram	IND	1744	1.05
Avinash Kunwar	JAPL	1508	0.9
Nanhak Sah	SUCI	1132	0.68
Rameshwar Sah	IND	944	0.57
Sanjay Kumar Singh	RVNP	748	0.45
Prakash Kumar	SASAPT	650	0.39
Rajesh Rai	IND	582	0.35
Alok Kumar	SP	524	0.31
Badri Nath Bihari	IND	472	0.28
	NOTA	5825	3.49

Votes Percentage of Top Parties - 2015



## Polling Station Level Election Results

### Number and Name of Polling Stations (PS) (2020)

Number of Polling Stations	Name of Polling Stations	Number of Polling Stations	Name of Polling Stations
1	Utkarmit Madhya Vidyalay, Mangurahiya Uttar Bhag	16	Uttakramit Madhya Vidyalay, Jagadishapur Baya Dakshin Bhag
2	Utkarmit Madhya Vidyalay, Mangurahiya Dakshin Bhag	17	Prathamik Vidyalay, Kodariya, Mango Uttar Bhag
3	Uttakramit Madhya Vidyalay, Hirapur Uttri Bhag	18	Prathamik Vidyalay, Kodariya, Mango Dakshin Bhag
4	Uttakramit Madhya Vidyalay, Hirapur Dakshin Bhag	19	Prathamik Vidyalay, Jagadishapur, Dharmu
5	Uttakramit Madhya Vidyalay Fatehapur, Uttri Bhag	20	Utkarmit Madhya Vidyalay, Hariharapur, Bhikkhi
5A	Uttakramit Madhya Vidyalay Fatehapur, Uttri Bhag	21	Prathamik Vidyalay, Chhapra Aas Uttar Bhag
6	Prathamik Vidyalay, Bhelaipur	21A	Prathamik Vidyalay, Chhapra Aas Uttar Bhag
7	Prathamik Vidyalay, Rasulapur	22	Prathamik Vidyalay, Makatab Vichala, Mazauliya, Paru Uttar Bhag
8	Prathamik Vidyalay, Batarauliya Uttar Bhag	23	Prathamik Vidyalay, Makatab Vichala, Mazauliya, Paru Dakshin Bhag
9	Prathamik Vidyalay, Batarauliya Dakshin Bhag	24	Samudayik Bhavan, Mazauliya, Paru
10	Madhya Vidyalay, Vajitapur, Uttar Bhag	24A	Samudayik Bhavan, Mazauliya, Paru
10A	Madhya Vidyalay, Vajitapur, Uttar Bhag	25	Prathamik Vidyalay, Gopalapur, Paru
11	Madhya Vidyalay, Vajitapur, Dakshini Bhag	26	Uchcha Vidyalay, Paru, Uttari Bhag
11A	Madhya Vidyalay, Vajitapur, Dakshini Bhag	26A	Uchcha Vidyalay, Paru, Uttari Bhag
12	Utkarmit Madhya Vidyalay, Delua Uttar Bhag	27	Uchcha Vidyalay, Paru, Dakshini Bhag
12A	Utkarmit Madhya Vidyalay, Delua Uttar Bhag	27A	Uchcha Vidyalay, Paru, Dakshini Bhag
13	Uttakramit Madhya Vidyalaya Delua Dakshin Bhag	28	Madhya Vidyalay, Paru Kanya Uttar Bhag
13A	Uttakramit Madhya Vidyalaya Delua Dakshin Bhag	28A	Madhya Vidyalay, Paru Kanya Uttar Bhag
14	Prathamik Vidyalay, Vajitpur Kashi Tola Uttar Bhag	29	Prathamik Vidyalay, Jamuna
14A	Prathamik Vidyalay, Vajitpur Kashi Tola Uttar Bhag	30	Madhya Vidyalay, Koiriya, Nijamat Uttar Bhag
15	Uttakramit Madhya Vidyalay, Jagadishapur Baya Uttri Bhag	30A	Madhya Vidyalay, Koiriya, Nijamat Uttar Bhag

Contd....

## Polling Station Level Election Results

### Polling Station-wise Votes Secured by Overall Top Five Parties in Paroo Assembly in Assembly Election (AE) under Vaishali Parliamentary Constituency in Bihar (2020)

Number of Polling Station	Winner - Ashok Kumar Singh (BJP)	Runner-up - Shankar Prasad (IND)	3rd - Anunay Sinha (INC)	4th - Madan Chaudhary (RLSP)	5th - Deepak Tiwari (RJPB)	NOTA	Other	Total Votes Secured
27	168	102	51	14	16	0	46	397
27A	158	201	10	16	16	4	27	432
28	178	91	12	31	12	3	36	363
28A	160	151	14	27	8	6	51	417
29	220	246	0	21	11	6	30	534
30	173	88	58	15	15	5	57	411
30A	138	180	39	14	25	3	49	448
31	196	101	19	30	23	7	40	416
31A	163	127	33	42	16	6	45	432
32	152	96	22	13	4	1	26	314
32A	134	233	8	9	8	5	30	427
33	280	130	59	12	18	4	88	591
34	165	147	6	46	10	12	30	416
34A	264	110	17	22	11	3	52	479
35	125	187	18	42	15	10	46	443
36	163	92	21	20	12	7	51	366
37	196	55	23	1	3	5	106	389
37A	132	121	69	8	14	2	32	378
38	184	162	15	24	28	2	53	468
39	212	234	4	13	23	6	48	540
40	161	64	17	15	14	4	31	306
40A	160	98	5	6	5	2	28	304
41	69	162	22	14	8	3	25	303
41A	86	137	23	11	3	5	16	281
42	14	469	19	6	21	9	27	565
43	186	28	28	8	2	0	25	277
44	223	42	16	6	7	2	31	327
44A	184	55	17	12	5	2	17	292
45	159	100	40	31	12	5	60	407
45A	54	180	24	71	23	15	41	408
46	202	227	18	16	37	9	80	589
47	259	149	18	8	7	3	46	490
48	47	168	90	5	8	3	23	344
48A	210	105	57	33	9	3	23	440
49	72	405	15	29	27	7	35	590

Contd....

## Polling Station Level Election Results

**Winner, Runner-up and 3rd Party Position & Winning Margin According to Polling Stations in Paroo Assembly in Assembly Election (AE) under Vaishali Parliamentary Constituency in Bihar (2020)**

Polling Station Number	Winner Party	Winner Votes (%)	Runner-up Party	Runner-up Votes (%)	Winning Margin Votes (%)	Third Party	Third Party Votes (%)	Other Votes (%)
50	IND (SP)	409 (61.6)	INC	133 (20.03)	276 (41.57)	BJP	43 (6.48)	79 (11.9)
51	IND (SP)	298 (75.06)	BJP	45 (11.34)	253 (63.72)	RLSP	11 (2.77)	43 (10.83)
51A	IND (SP)	391 (83.55)	BJP	28 (5.98)	363 (77.57)	INC	10 (2.14)	39 (8.33)
52	BJP	116 (34.02)	IND (SP)	82 (24.05)	34 (9.97)	INC	73 (21.41)	70 (20.53)
52A	IND (SP)	143 (43.33)	INC	101 (30.61)	42 (12.72)	BJP	44 (13.33)	42 (12.73)
53	BJP	135 (31.32)	RLSP	80 (18.56)	55 (12.76)	INC	76 (17.63)	140 (32.48)
53A	BJP	170 (37.2)	INC	118 (25.82)	52 (11.38)	IND (SP)	75 (16.41)	94 (20.57)
54	BJP	185 (37)	RLSP	161 (32.2)	24 (4.8)	IND (SP)	52 (10.4)	102 (20.4)
54A	BJP	210 (46.77)	IND (SP)	89 (19.82)	121 (26.95)	RLSP	78 (17.37)	72 (16.04)
55	BJP	196 (48.51)	IND (SP)	73 (18.07)	123 (30.44)	RLSP	61 (15.1)	74 (18.32)
55A	BJP	259 (54.18)	IND (SP)	76 (15.9)	183 (38.28)	RLSP	75 (15.69)	68 (14.23)
56	IND (SP)	239 (50.21)	BJP	64 (13.45)	175 (36.76)	RLSP	41 (8.61)	132 (27.73)
56A	IND (SP)	256 (55.9)	BJP	112 (24.45)	144 (31.45)	RLSP	18 (3.93)	72 (15.72)
57	IND (SP)	190 (55.88)	BJP	102 (30)	88 (25.88)	RLSP	7 (2.06)	41 (12.06)
57A	BJP	143 (46.58)	IND (SP)	140 (45.6)	3 (0.98)	INC	10 (3.26)	14 (4.56)
58	BJP	250 (42.16)	IND (SP)	223 (37.61)	27 (4.55)	INC	35 (5.9)	85 (14.33)
59	IND (SP)	330 (78.57)	BJP	17 (4.05)	313 (74.52)	RLSP	14 (3.33)	59 (14.05)
60	BJP	259 (48.68)	IND (SP)	152 (28.57)	107 (20.11)	INC	28 (5.26)	93 (17.48)
61	IND (SP)	349 (66.73)	BJP	56 (10.71)	293 (56.02)	INC	31 (5.93)	87 (16.63)
62	BJP	162 (43.43)	IND (SP)	126 (33.78)	36 (9.65)	RLSP	56 (15.01)	29 (7.77)
62A	IND (SP)	206 (63.19)	BJP	73 (22.39)	133 (40.8)	INC	18 (5.52)	29 (8.9)
63	IND (SP)	258 (39.94)	BJP	236 (36.53)	22 (3.41)	RJPB	31 (4.8)	121 (18.73)
64	BJP	125 (49.41)	IND (SP)	83 (32.81)	42 (16.6)	APoI	6 (2.37)	39 (15.42)
64A	IND (SP)	110 (42.97)	BJP	83 (32.42)	27 (10.55)	RJPB	13 (5.08)	50 (19.53)
65	IND (SP)	312 (59.66)	BJP	138 (26.39)	174 (33.27)	RJPB	25 (4.78)	48 (9.18)
66	IND (SP)	500 (79.87)	BJP	36 (5.75)	464 (74.12)	INC	24 (3.83)	66 (10.54)
67	IND (SP)	299 (58.17)	BJP	132 (25.68)	167 (32.49)	INC	32 (6.23)	51 (9.92)
68	IND (SP)	281 (72.24)	BJP	31 (7.97)	250 (64.27)	RLSP	23 (5.91)	54 (13.88)
68A	IND (SP)	325 (83.12)	BJP	17 (4.35)	308 (78.77)	RLSP	10 (2.56)	39 (9.97)
69	BJP	197 (37.6)	IND (SP)	145 (27.67)	52 (9.93)	INC	60 (11.45)	122 (23.28)
70	BJP	167 (35.61)	IND (SP)	126 (26.87)	41 (8.74)	INC	113 (24.09)	63 (13.43)
71	BJP	221 (69.5)	IND (SP)	19 (5.97)	202 (63.53)	IND (MK)	17 (5.35)	61 (19.18)
71A	BJP	241 (80.6)	INC	12 (4.01)	229 (76.59)	IND (MK)	10 (3.34)	36 (12.04)
72	BJP	275 (68.58)	IND (SP)	46 (11.47)	229 (57.11)	IND (MK)	23 (5.74)	57 (14.21)
73	BJP	176 (52.23)	IND (SP)	32 (9.5)	144 (42.73)	INC	29 (8.61)	100 (29.67)

Contd....

## Socio-Economic Amenities - Rural

### Access to Education Facilities

Particulars	Number of Villages (% of Population)				
	Available	Not Available	If Not Available (Distance of Nearest Facility)		
			A	B	C
Govt. Primary School	189 (98)	16 (2)	12 (2)	3 (1)	0 (0)
Private Primary School	40 (23)	165 (77)	0 (0)	0 (0)	0 (0)
Govt. Middle School	107 (73)	98 (27)	70 (18)	23 (6)	0 (0)
Private Middle School	10 (6)	195 (94)	0 (0)	0 (0)	0 (0)
Govt. Secondary School	11 (21)	194 (79)	5 (2)	9 (3)	177 (72)
Private Secondary School	4 (3)	201 (97)	0 (0)	0 (0)	0 (0)
Govt. Senior Secondary School	5 (8)	200 (92)	39 (21)	89 (35)	71 (35)
Private Senior Secondary School	2 (3)	203 (97)	0 (0)	0 (0)	0 (0)
Govt. Arts and Science Degree College	1 (4)	204 (96)	2 (3)	4 (2)	150 (65)
Private Arts and Science Degree College	9 (5)	196 (95)	0 (0)	0 (0)	39 (20)
Govt. Engineering College	0 (0)	205 (100)	0 (0)	0 (0)	0 (0)
Private Engineering College	0 (0)	205 (100)	0 (0)	0 (0)	205 (100)
Govt. Medicine College	0 (0)	205 (100)	0 (0)	0 (0)	205 (100)
Private Medicine College	0 (0)	205 (100)	0 (0)	0 (0)	0 (0)
Govt. Management Institute	0 (0)	205 (100)	0 (0)	0 (0)	0 (0)
Private Management Institute	0 (0)	205 (100)	0 (0)	0 (0)	205 (100)
Govt. Polytechnic	6 (14)	199 (86)	0 (0)	0 (0)	199 (86)
Private Polytechnic	0 (0)	205 (100)	0 (0)	0 (0)	0 (0)
Govt. Vocational Training School/ITI	0 (0)	205 (100)	0 (0)	0 (0)	99 (45)
Private Vocational Training School/ITI	0 (0)	205 (100)	0 (0)	0 (0)	106 (55)
Govt. Non Formal Training Centre	1 (1)	204 (99)	0 (0)	0 (0)	203 (98)
Private Non Formal Training Centre	1 (1)	204 (99)	0 (0)	0 (0)	0 (0)
Govt. School For Disabled	0 (0)	205 (100)	0 (0)	0 (0)	182 (88)
Private School For Disabled	0 (0)	205 (100)	0 (0)	0 (0)	23 (12)
Government Others	2 (1)	203 (99)	0 (0)	1 (1)	1 (1)
Private Others	7 (4)	198 (96)	1 (1)	0 (0)	3 (1)

Note : Distance A : Less than 5 km; B : Between 5-10 km; C : 10+ km.; Source : Data Analysis is based on 2011 Census.

## DISCLAIMER

The Terms of Use and Disclaimer of Datanet India Private Limited (hereinafter referred to as "Datanet") for use of this analysis report of **Paroo Assembly Constituency (Paroo Vidhan Sabha)** :-

1. **Assembly Factbook™** is a Registered Trade Mark owned by Datanet.
2. All the maps are sketched and graphical representation only and have not been drawn to the scale and also not to represent the actual geographical area or boundary of the unit.
3. The data for the aforesaid analysis is based on authentic sources and has been culled from the various publications of Census, CSO and NSSO for district and block level data, various central and state government departments, Central & State Elections Commissions and the concerned Returning Officers' releases, Electoral Rolls, Election results and allied publications, internal assessment, surveys, estimates and analysis. Therefore, certain adjustment of data at micro level may have been done to arrive closer to the macro data.
4. Data have been provided on an "As Is" and "As AVAILABLE" basis
5. The colours shown in the maps or diagram and charts of a particular party, alliance or AC are indicative and do not represent them.
6. This publication which includes maps, sheets, graphs and data would be the property under copyright of Datanet only. The user may use these for its internal study, analysis and research purposes. It's public display, re-selling or any commercial uses by the user are not allowed.
7. Datanet has taken due care and caution in compilation and processing of data and allied information, but does not guarantee the accuracy, adequacy or completeness of any information/analysis and will be not responsible for any errors or omissions or for the results obtained from the use of such information/analysis.
8. All the contents for the publication have been culled from various authentic sources and Datanet reasonably believes such sources to be reliable, but does not make any representations, express or implied as to the accuracy or fitness of use of such information. The information or contents of the information/analysis do not constitute advice and should not be relied upon in making (or refraining from making) any decision. Any reliance placed upon the information provided by Datanet is the sole responsibility and strictly at the user's risk.
9. In no event will Datanet be liable for any damages (including, without limitation, damages for loss of business projects, or loss of profits) arising in contract, tort or otherwise from the use of or inability to use any of its contents, or from any action taken (or refrained from being taken) as a result of using the analysis or any of its contents. Datanet its directors, owners, editors, officials, employees, distributor and agents or any associate will not be liable for any errors in the information contained or any consequences arising from the use of the contents of the provided information/analysis.
10. If any provision of these terms and conditions is held invalid or illegal or unenforceable for any reason by any court of competent jurisdiction, such provision shall be severed and the remainder of provisions of the terms and conditions shall continue in full force and effect as if the Term of Use had been executed with the invalid, illegal or unenforceable provision eliminated.
11. If there are any discrepancies in the information provided, please bring it to attention of Datanet for suitable rectification measures.

**Buy Online This Complete Book At**  
**Indiastat Publication Book Store**

[www.indiastatpublications.com](http://www.indiastatpublications.com)

**or go directly at**

[http://www.indiastatpublications.com/  
Assembly\\_factbook/Bihar/Vaishali/ Paroo](http://www.indiastatpublications.com/Assembly_factbook/Bihar/Vaishali/Paroo)

 **indiastat**elections

ISBN : 978-93-5313-156-2

