



Tamil Nadu

Assembly Factbook™

Pennagaram Assembly Constituency



Key Electoral Data of Pennagaram
Assembly Constituency (Vidhan Sabha)

Tamil Nadu **Assembly Factbook**TM

Pennagaram Assembly Constituency



Pennagaram Vidhan Sabha

Editor & Director

Dr. R.K. Thukral

Research Editor

Dr. Shafeeq Rahman

Compiled, Researched and Published by Datanet India Pvt. Ltd.

D-100, 1st Floor,

Okhla Industrial Area, Phase-I,
New Delhi- 110020.

Ph.: 91-11- 43580781-84

Email : support@indiastatpublications.com

Website : www.indiastatelections.com

Online Book Store :

www.indiastatpublications.com

Report No. : AFB/TN-058-0125

ISBN : 978-93-5313-825-7

First Edition : January, 2018

Eighth Updated Edition : January, 2025

Price : Rs. 11500/-

US\$ 310

© Datanet India Pvt. Ltd.

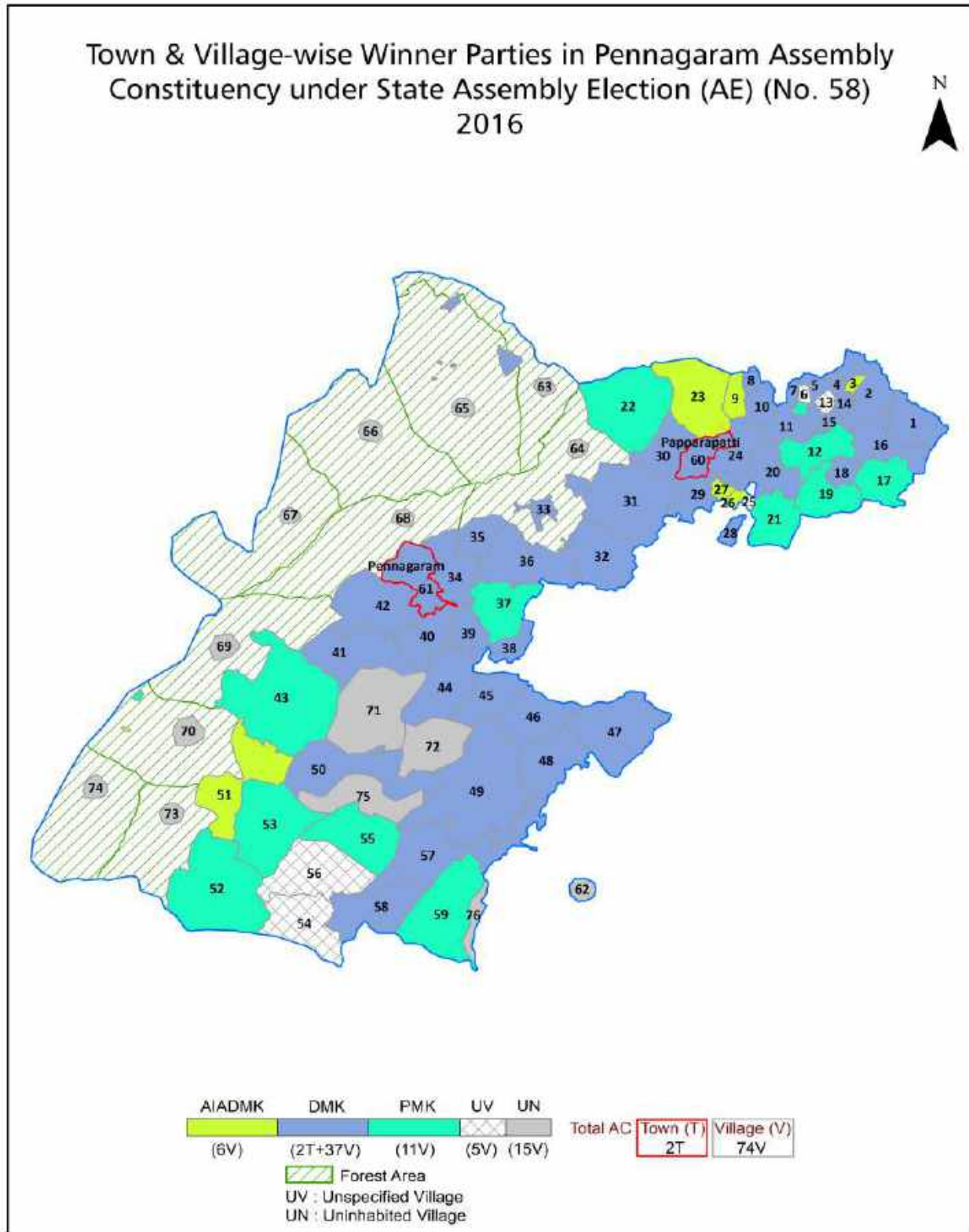
All rights reserved. No part of this book may be reproduced, stored in a retrieval system or transmitted in any form or by any means, mechanical photocopying, photographing, scanning, recording or otherwise without the prior written permission of the publisher. Please refer to Disclaimer at page no. 246 for the use of this publication.

Printed in India

Contents

No.	Particulars	Page No.
	Introduction	
1	Assembly Constituency - (Vidhan Sabha) at a Glance Features of Assembly as per Delimitation Commission of India (2008)	1-2
	Location and Political Maps	
2	Location Map Boundaries of Assembly Constituency - (Vidhan Sabha) in District Boundaries of Assembly Constituency under Parliamentary Constituency - (Lok Sabha) Town & Village-wise Winner Parties- 2024, 2021, 2019, 2016, 2014, 2011 and 2009	3-11
	Administrative Setup (2011)	
3	District Sub-district Towns Villages Inhabited Villages Uninhabited Villages Village Panchayat Intermediate Panchayat	12-16
	Demographics (2011)	
4	Population Households Rural/Urban Population Towns and Villages by Population Size Sex Ratio (Total & 0-6 Years) Religious Population Social Population Literacy Rate	17-18
	Electoral Features	
5	Important Dates of Last Elections Held Electors by Gender Service Electors Voters Voters Turnout Polling Stations & Average Number of Electors per Polling Station Electors by Age Group Present Elected Representatives	19-24
	Historical Summary Election Results	
6	Vote Share of Major Parties Winning Margin (Number & Percentage) Polarity of Parties Summary Result of Assembly Segment of Parliamentary Elections 2024, 2019, 2014, 2009, 2004 and 1999 Summary Result of Assembly Elections 2021, 2016, 2011, 2006, 2001, 1996, 1991, 1989, 1984, 1980, 1977, 1971 and 1967	25-46
	Polling Station Level Election Results	
7	Name and Number of Polling Station 2024, 2021, 2019, 2016, 2014, 2011 and 2009 Polling Station-wise Electors, Voters & Voters Turnout 2024, 2021, 2019, 2016, 2014, 2011 and 2009 Polling Station wise Elections Results 2024, 2021, 2019, 2016, 2014, 2011 and 2009	47-225
	Share of Assembly Constituency	
8	Share of Assembly Constituency - (Vidhan Sabha) in State, District and Parliamentary Constituency - (Lok Sabha)	226
	Socio-Economic Amenities (2011)	
9	Access to Administrative Units Agricultural, Manufacturing and Industrial Commodities Demographic Indicators Education Health & Manpower Drinking Water Supply Sanitation Entertainment and Recreations Infrastructure Power Food Allocation Distribution and Marketing of Agriculture Commodities Infrastructure Transport and Road Infrastructure Communication Banking and Financial Services Land Use Irrigation Source	227-242
10	Abbreviation & Sources	243-245
11	Disclaimer	246

Location & Political Map



Administrative Setup

List of Village Panchayat & Intermediate Panchayat (Block) Name - 2011

Village Name	Village Panchayat Name	Intermediate Panchayat Name
Ajjanahalli	Ajjanahalli	Pennagaram
Andarahalli	Madehalli	Pennagaram
Anjehalli	Anjehalli	Pennagaram
Arakasanahalli	Arakasanahalli	Pennagaram
Badrahalli	Badrahalli	Pennagaram
Bathalahalli	Modugulahalli	Palacode
Begarahalli	Begarahalli	Karimangalam
Booganahalli	Booganahalli	Palacode
Chinnampalli	Chinnampalli	Pennagaram
D. Solapadi	Manjarahalli	Pennagaram
Domalahalli	Modugulahalli	Palacode
Donnakuttahalli	Donnakuttahalli	Pennagaram
Gendenahalli	Gendenahalli	Pennagaram
Guthalahalli	Kattampatti	Palacode
Jagirburgur	Selliyampatti	Palacode
Jarimankurichy	Manjarahalli	Pennagaram
Kadamadai	Maanjinaickanahalli	Pennagaram
Kalappambadi	Kalappambadi	Pennagaram
Kalappanahalli	Kalappanahalli	Karimangalam
Kariappanahalli	Pallipatti	Pennagaram
Karukkamaranhalli	Kattampatti	Palacode
Kattanahalli	Kattampatti	Palacode
Kattinaickenahalli	Anjehalli	Pennagaram
Kodihalli	Kodihalli	Pennagaram
Koothapadi	Koothapadi	Pennagaram
Kukuttamaruthahalli	Kukuttamaruthahalli	Pennagaram
Maanjinaickanahalli	Maanjinaickanahalli	Pennagaram
Madehalli	Acharahalli, Madehalli	Pennagaram
Mallikuttai	Mallikuttai	Karimangalam

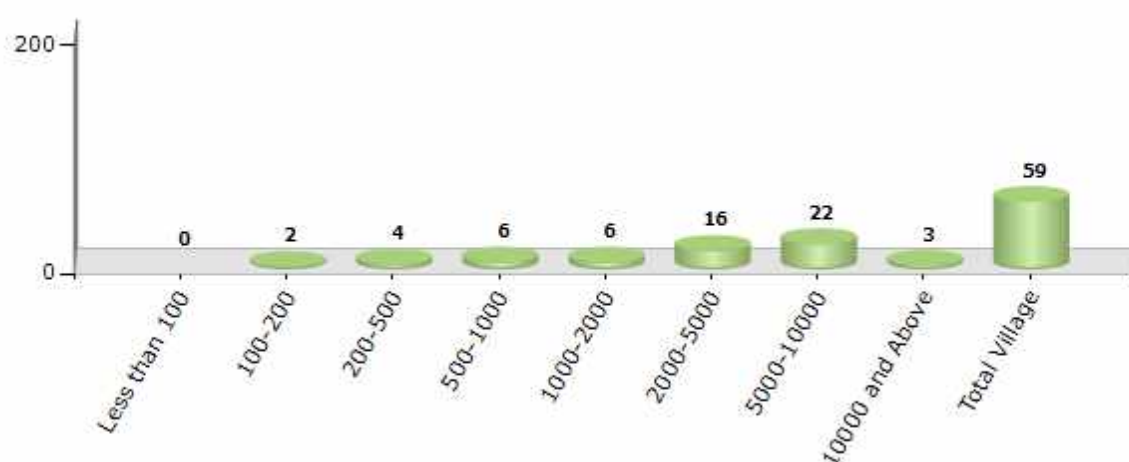
Contd....

Demographics

Number of Villages by Population Size - 2011

Less than 100	100-200	200-500	500-1000	1000-2000	2000-5000	5000-10000	10000 and Above	Total Village
0	2	4	6	6	16	22	3	59

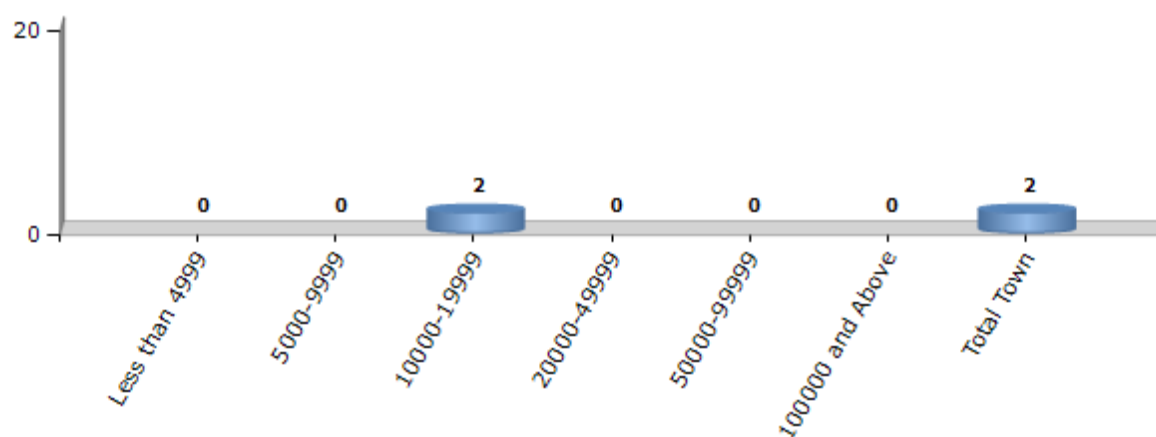
Number of Villages by Population Size - 2011



Number of Towns by Population Size - 2011

Less than 4999	5000-9999	10000-19999	20000-49999	50000-99999	100000 and Above	Total Town
0	0	2	0	0	0	2

Number of Towns by Population Size - 2011



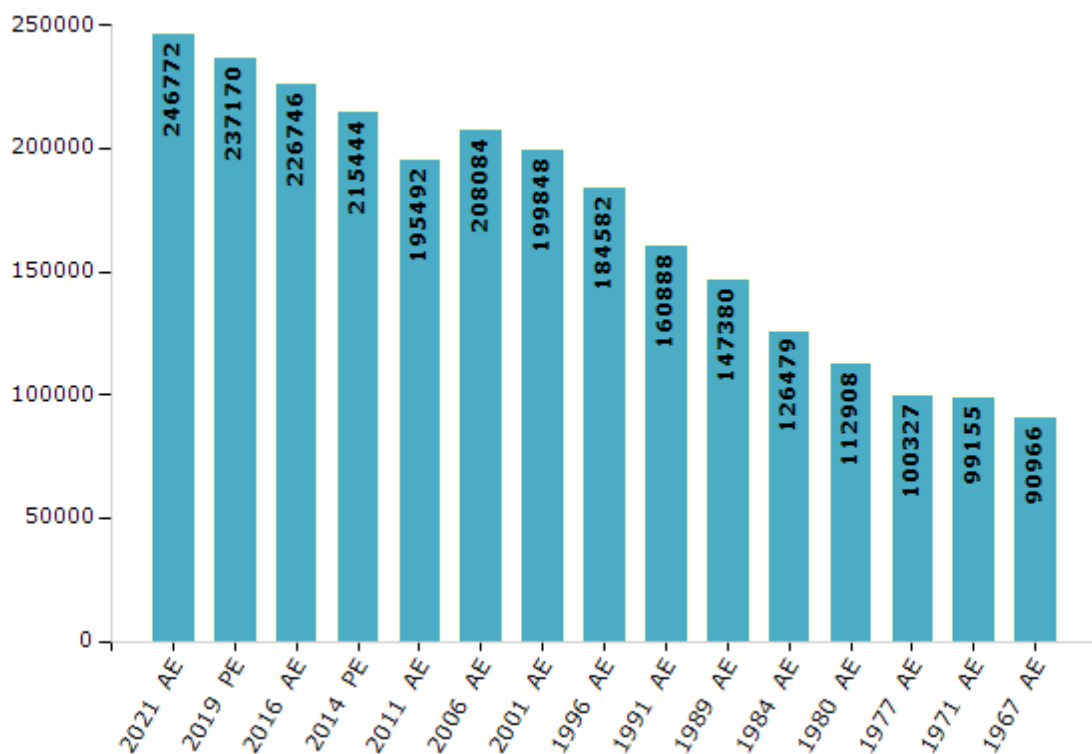
Electoral Features

Electors by Male & Female

Year	Male	Female	Others	Total
2021 AE	127811	118951	10	246772
2019 PE	123222	113938	10	237170
2016 AE	117490	109250	6	226746
2014 PE	111980	103464	0	215444
2011 AE	100894	94594	4	195492
2009 PE	-	-	-	-
2006 AE	103645	104439	-	208084
2004 PE	-	-	-	-
2001 AE	101115	98733	-	199848

Year	Male	Female	Others	Total
1999 PE	-	-	-	-
1996 AE	93007	91575	-	184582
1991 AE	81340	79548	-	160888
1989 AE	73874	73506	-	147380
1984 AE	63063	63416	-	126479
1980 AE	56336	56572	-	112908
1977 AE	49987	50340	-	100327
1971 AE	49541	49614	-	99155
1967 AE	-	-	-	90966

Number of Electors



Note : AE : Assembly Election, PE : Assembly Segment of Parliamentary Election

Historical Summary Election Results

Summary Result of Assembly Election - 2016

Candidate Name	Party	Votes	Votes %
Inbasekaran. P.N.P.	DMK	76848	38.49
Anbumani Ramadoss	PMK	58402	29.25
Munusamy K.P	AIADMK	51687	25.89
Nanjappan. N.	CPI	5624	2.82
Muniappan. A	IND	716	0.36
Sivakumar. G	NTK	688	0.34
Murugesan. M	IND	688	0.34
Pothurasu. N	IND	640	0.32
Dhanapal. G	IND	555	0.28
Malliga. M	BSP	473	0.24
Venkatesan. P. C	IND	336	0.17
Agni Sriramachandran	IND	300	0.15
Sivalingam. P	IND	222	0.11
Jaikumar. K	JD(S)	193	0.1
Singaravelu. K	IND	182	0.09
	NOTA	2081	1.04

Polling Station Level Election Results

Number and Name of Polling Stations (PS) (2021)

Number of Polling Stations	Name of Polling Stations	Number of Polling Stations	Name of Polling Stations
1	Panchyat Union Elementary School, Erimalai - 636810, Terraced Building Facing North - West Wing	19	Panchayat Union Elementary School, Kammalapatti - 636808, New Terraced Building Facing South - East Wing
2	Panchayat Union Middle School, Kotturmalai - 636810, Mangalore Tiled Building Facing South - West wing	20	Panchayat Union Elementary School, Kammalapatti - 636808, New Terraced Building Facing West - East Wing
3	Government High School, Periyur - 636809, New Terraced Building Facing West - North Wing	21	Panchayat Union Elementary School, Mangalapatty - 636808, Terraced Building Facing North - East Wing
4	Government High School, Periyur - 636809, New Terraced Building Facing East - South Wing	22	Panchayat Union Elementary School, Thomalahalli - 636808, New Terraced Building Facing East - North wing
5	Panchayat Union Elementary School, Pikkili - 636809, Terraced Building Facing South - West Wing	23	Multipurpose Center, K.Chettihalli(Pappinaickanahalli) - 636808, Terraced Building Facing East
5A	Panchayat Union Elementary School, Pikkili - 636809, Terraced Building Facing South - West Wing	23A	Multipurpose Center, K.Chettihalli(Pappinaickanahalli) - 636808, Terraced Building Facing East
6	Panchayat Union Elementary School, Pikkili - 636809, Terraced Building Facing North - East Wing	24	Panchayat Union Elementary School, Modhukulahalli - 636808, Terraced Building Facing South - East Wing
7	Panchayat Union Elementary School, Gollapatti - 636809, Terraced Building Facing South	25	Panchayat Union Middle School, Kuthalahalli - 636808, New Terraced Building Facing North - West Wing
8	Panchayat Union Elementary School, Gollapatti - 636809, Terraced Building Facing East - Center Room	25A	Panchayat Union Middle School, Kuthalahalli - 636808, New Terraced Building Facing North - West Wing
9	Panchayat Union Middle School, Malaiyur - 636809, Tiled Building Facing East	26	Panchayat Union Middle School, Kattampatti - 636808, New Terraced Building Facing North - East Wing
10	Panchayat Union Middle School, Pudukarambu - 636809, Terraced Building Facing East - South wing	27	Panchayat Union Elementary School, Pattagapatti - 636808, Terraced Building Facing West - South Wing
11	Panchayat Union Middle School, Pudukarambu - 636809, Terraced Building Facing North - East wing	28	Panchayat Union Elementary School, Pattagapatti - 636808, Terraced Building Facing West - North Wing
12	Panchayat Union Middle School, Giddanahalli - 636809, Terraced Building Facing West - North wing	29	Panchayat Union Elementary School, Kottavur - 636808, Terraced Building Facing East - South Wing
13	Panchayat Union Middle School, Giddanahalli - 636809, Terraced Building Facing East - South Wing	30	Panchayat Union Middle School, Kupparangai - 635205, New Terraced Building Facing West - North wing
14	Panchayat Union Middle School, Vathimaruthahalli - 636809, Terraced Building Facing North	31	Panchayat Union Middle School, Kupparangai - 635205, New Terraced Building Facing West - South wing
15	Panchayat Union Middle School, Vathimaruthahalli - 636809, Terraced Building Facing East - South wing	32	Panchayat Union Elementary School, Kalappanahalli (Pudur) - 635205, New Terraced Building Facing East
15A	Panchayat Union Middle School, Vathimaruthahalli - 636809, Terraced Building Facing East - South wing	32A	Panchayat Union Elementary School, Kalappanahalli (Pudur) - 635205, New Terraced Building Facing East
16	Panchayat Union Elementary School, Thirumalvadi - 636809, Terraced Building Facing North - West Wing	33	Panchayat Union Elementary School, Mekkanampatti - 635205, New Terraced Building Facing West - North wing
16A	Panchayat Union Elementary School, Thirumalvadi - 636809, Terraced Building Facing North - West Wing	34	Panchayat Union Elementary School, Mekkanampatti - 635205, New Terraced Building Facing North - East wing
17	Panchayat Union Elementary School, Thirumalvadi - 636809, New Terraced Building Facing North - East Wing	35	Panchayat Union Elementary School, Kodiyur Sendrayampatti - 635205, New Terraced Building Facing East - South wing
18	Panchayat Union Elementary School, Kammalapatti - 636808, New Terraced Building Facing South - West Wing	36	Panchayat Union Middle School, Modur (Boomandahalli) - 635205, New Terraced Building Facing East

Contd....

Polling Station Level Election Results

Polling Station-wise Votes Secured by Overall Top Five Parties in Pennagaram Assembly in Assembly Election (AE) under Dharmapuri Parliamentary Constituency in Tamil Nadu (2021)

Number of Polling Station	Winner - Mani. G.K (PMK)	Runner-up - Inbasekaran. P.N.P (DMK)	3rd - Tamilazhagan. R (NTK)	4th - Uthaya kumar. R (DMDK)	5th - Periyanan jappan. A (IND)	NOTA	Other	Total Votes Secured
31	350	350	67	9	6	6	10	798
32	319	174	18	15	1	2	6	535
32A	284	178	10	4	14	2	10	502
33	248	402	56	36	8	10	16	776
34	390	323	69	8	12	7	8	817
35	468	239	26	16	8	5	12	774
36	430	313	83	4	11	6	5	852
37	228	432	41	4	3	7	12	727
38	431	267	29	3	11	11	17	769
39	445	314	32	4	11	8	13	827
40	332	280	40	11	5	4	12	684
41	329	114	21	6	6	8	9	493
42	311	281	16	9	4	5	3	629
43	244	205	35	8	2	3	5	502
43A	220	198	15	6	3	3	11	456
44	228	183	42	8	1	2	5	469
44A	228	172	15	5	8	2	3	433
45	530	111	42	12	7	5	11	718
46	490	267	42	21	8	9	17	854
47	498	295	49	13	9	6	16	886
48	336	128	20	7	0	4	9	504
48A	330	141	12	2	10	2	8	505
49	648	211	28	2	19	11	16	935
50	206	149	17	1	1	1	2	377
51	443	289	50	11	21	13	20	847
52	169	269	16	12	5	4	14	489
53	223	155	23	5	5	3	6	420
54	266	152	55	4	1	3	7	488
54A	244	173	23	0	11	9	16	476
55	304	136	43	11	1	3	5	503
55A	314	161	20	7	14	6	13	535
56	236	328	18	14	4	7	3	610
57	457	319	54	2	4	10	8	854
58	290	191	22	0	1	5	2	511
58A	230	211	6	1	5	3	11	467

Contd....

Polling Station Level Election Results

Winner, Runner-up and 3rd Party Position & Winning Margin According to Polling Stations in Pennagaram Assembly in Assembly Election (AE) under Dharmapuri Parliamentary Constituency in Tamil Nadu (2021)

Polling Station Number	Winner Party	Winner Votes (%)	Runner-up Party	Runner-up Votes (%)	Winning Margin Votes (%)	Third Party	Third Party Votes (%)	Other Votes (%)
63	PMK	360 (60.81)	DMK	172 (29.05)	188 (31.76)	NTK	37 (6.25)	23 (3.89)
63A	PMK	317 (61.2)	DMK	150 (28.96)	167 (32.24)	IND (PA)	23 (4.44)	28 (5.41)
64	PMK	406 (54.21)	DMK	244 (32.58)	162 (21.63)	DMDK	54 (7.21)	45 (6.01)
65	DMK	400 (82.14)	PMK	41 (8.42)	359 (73.72)	NTK	24 (4.93)	22 (4.52)
66	PMK	419 (66.72)	DMK	153 (24.36)	266 (42.36)	NTK	25 (3.98)	31 (4.94)
67	PMK	455 (57.09)	DMK	293 (36.76)	162 (20.33)	DMDK	16 (2.01)	33 (4.14)
68	PMK	270 (53.05)	DMK	189 (37.13)	81 (15.92)	NTK	33 (6.48)	17 (3.34)
68A	PMK	264 (56.77)	DMK	173 (37.2)	91 (19.57)	NTK	13 (2.8)	15 (3.23)
69	PMK	461 (56.36)	DMK	282 (34.47)	179 (21.89)	NTK	48 (5.87)	27 (3.3)
70	PMK	458 (51.93)	DMK	304 (34.47)	154 (17.46)	NTK	65 (7.37)	55 (6.24)
71	PMK	431 (57.39)	DMK	258 (34.35)	173 (23.04)	DMDK	26 (3.46)	36 (4.79)
72	PMK	335 (56.11)	DMK	205 (34.34)	130 (21.77)	NTK	26 (4.36)	31 (5.19)
73	PMK	280 (47.78)	DMK	259 (44.2)	21 (3.58)	NTK	27 (4.61)	20 (3.41)
74	PMK	309 (54.02)	DMK	182 (31.82)	127 (22.2)	NTK	62 (10.84)	19 (3.32)
75	PMK	302 (52.25)	DMK	200 (34.6)	102 (17.65)	NTK	53 (9.17)	23 (3.98)
76	PMK	281 (56.77)	DMK	161 (32.53)	120 (24.24)	NTK	32 (6.46)	21 (4.24)
76A	PMK	257 (53.99)	DMK	183 (38.45)	74 (15.54)	IND (PA)	11 (2.31)	25 (5.25)
77	PMK	328 (50.08)	DMK	259 (39.54)	69 (10.54)	NTK	28 (4.27)	40 (6.11)
78	PMK	373 (46.16)	DMK	366 (45.3)	7 (0.86)	NTK	22 (2.72)	47 (5.82)
79	PMK	401 (56.96)	DMK	236 (33.52)	165 (23.44)	NTK	24 (3.41)	43 (6.11)
80	PMK	299 (58.17)	DMK	146 (28.4)	153 (29.77)	NTK	29 (5.64)	40 (7.78)
80A	PMK	247 (54.05)	DMK	148 (32.39)	99 (21.66)	DMDK	18 (3.94)	44 (9.63)
81	PMK	277 (55.4)	DMK	170 (34)	107 (21.4)	NTK	39 (7.8)	14 (2.8)
81A	PMK	220 (46.61)	DMK	214 (45.34)	6 (1.27)	NTK	17 (3.6)	21 (4.45)
82	PMK	548 (61.85)	DMK	261 (29.46)	287 (32.39)	NTK	38 (4.29)	39 (4.4)
83	PMK	303 (68.55)	DMK	121 (27.38)	182 (41.17)	NTK	10 (2.26)	8 (1.81)
84	PMK	290 (47.31)	DMK	272 (44.37)	18 (2.94)	NTK	22 (3.59)	29 (4.73)
85	PMK	247 (50)	DMK	200 (40.49)	47 (9.51)	NTK	28 (5.67)	19 (3.85)
85A	PMK	251 (53.07)	DMK	193 (40.8)	58 (12.27)	NTK	10 (2.11)	19 (4.02)
86	PMK	287 (51.25)	DMK	217 (38.75)	70 (12.5)	NTK	39 (6.96)	17 (3.04)
87	PMK	283 (63.6)	DMK	124 (27.87)	159 (35.73)	NTK	23 (5.17)	15 (3.37)
87A	PMK	294 (67.28)	DMK	104 (23.8)	190 (43.48)	NTK	10 (2.29)	29 (6.64)
88	PMK	383 (77.37)	DMK	69 (13.94)	314 (63.43)	NTK	30 (6.06)	13 (2.63)
88A	PMK	384 (81.36)	DMK	60 (12.71)	324 (68.65)	NTK	10 (2.12)	18 (3.81)
89	DMK	532 (73.99)	PMK	159 (22.11)	373 (51.88)	NTK	12 (1.67)	16 (2.23)
90	PMK	161 (50.63)	DMK	136 (42.77)	25 (7.86)	NTK	10 (3.14)	11 (3.46)
91	DMK	247 (59.52)	PMK	114 (27.47)	133 (32.05)	NTK	29 (6.99)	25 (6.02)

Contd....

Socio-Economic Amenities - Rural

Access to Education Facilities

Particulars	Number of Villages (% of Population)				
	Available	Not Available	If Not Available (Distance of Nearest Facility)		
			A	B	C
Govt. Primary School	54 (99)	5 (1)	4 (0)	1 (1)	0 (0)
Private Primary School	4 (10)	55 (90)	0 (0)	0 (0)	0 (0)
Govt. Middle School	46 (94)	13 (6)	11 (5)	2 (1)	0 (0)
Private Middle School	2 (4)	57 (96)	0 (0)	0 (0)	0 (0)
Govt. Secondary School	25 (64)	34 (36)	20 (19)	11 (12)	0 (0)
Private Secondary School	2 (4)	57 (96)	2 (4)	0 (0)	0 (0)
Govt. Senior Secondary School	8 (25)	51 (75)	18 (26)	28 (41)	2 (3)
Private Senior Secondary School	1 (2)	58 (98)	2 (4)	0 (0)	0 (0)
Govt. Arts and Science Degree College	0 (0)	59 (100)	4 (9)	5 (12)	12 (18)
Private Arts and Science Degree College	0 (0)	59 (100)	1 (1)	20 (29)	17 (29)
Govt. Engineering College	0 (0)	59 (100)	1 (2)	0 (0)	6 (8)
Private Engineering College	0 (0)	59 (100)	3 (7)	17 (23)	32 (60)
Govt. Medicine College	0 (0)	59 (100)	0 (0)	2 (4)	57 (96)
Private Medicine College	0 (0)	59 (100)	0 (0)	0 (0)	0 (0)
Govt. Management Institute	0 (0)	59 (100)	0 (0)	0 (0)	7 (11)
Private Management Institute	0 (0)	59 (100)	4 (9)	18 (23)	30 (57)
Govt. Polytechnic	0 (0)	59 (100)	0 (0)	7 (3)	11 (13)
Private Polytechnic	3 (5)	56 (95)	7 (9)	14 (30)	17 (40)
Govt. Vocational Training School/ITI	0 (0)	59 (100)	9 (14)	10 (14)	22 (43)
Private Vocational Training School/ITI	0 (0)	59 (100)	0 (0)	2 (4)	16 (25)
Govt. Non Formal Training Centre	54 (99)	5 (1)	4 (0)	1 (1)	0 (0)
Private Non Formal Training Centre	0 (0)	59 (100)	0 (0)	0 (0)	0 (0)
Govt. School For Disabled	0 (0)	59 (100)	0 (0)	3 (6)	56 (94)
Private School For Disabled	0 (0)	59 (100)	0 (0)	0 (0)	0 (0)
Government Others	0 (0)	59 (100)	0 (0)	0 (0)	1 (3)
Private Others	0 (0)	59 (100)	1 (2)	0 (0)	0 (0)

Note : Distance A : Less than 5 km; B : Between 5-10 km; C : 10+ km.; Source : Data Analysis is based on 2011 Census.

DISCLAIMER

The Terms of Use and Disclaimer of Datanet India Private Limited (hereinafter referred to as "Datanet") for use of this analysis report of **Pennagaram Assembly Constituency (Pennagaram Vidhan Sabha)** :-

1. **Assembly Factbook™** is a Registered Trade Mark owned by Datanet.
2. All the maps are sketched and graphical representation only and have not been drawn to the scale and also not to represent the actual geographical area or boundary of the unit.
3. The data for the aforesaid analysis is based on authentic sources and has been culled from the various publications of Census, CSO and NSSO for district and block level data, various central and state government departments, Central & State Elections Commissions and the concerned Returning Officers' releases, Electoral Rolls, Election results and allied publications, internal assessment, surveys, estimates and analysis. Therefore, certain adjustment of data at micro level may have been done to arrive closer to the macro data.
4. Data have been provided on an "As Is" and "As AVAILABLE" basis
5. The colours shown in the maps or diagram and charts of a particular party, alliance or AC are indicative and do not represent them.
6. This publication which includes maps, sheets, graphs and data would be the property under copyright of Datanet only. The user may use these for its internal study, analysis and research purposes. It's public display, re-selling or any commercial uses by the user are not allowed.
7. Datanet has taken due care and caution in compilation and processing of data and allied information, but does not guarantee the accuracy, adequacy or completeness of any information/analysis and will be not responsible for any errors or omissions or for the results obtained from the use of such information/analysis.
8. All the contents for the publication have been culled from various authentic sources and Datanet reasonably believes such sources to be reliable, but does not make any representations, express or implied as to the accuracy or fitness of use of such information. The information or contents of the information/analysis do not constitute advice and should not be relied upon in making (or refraining from making) any decision. Any reliance placed upon the information provided by Datanet is the sole responsibility and strictly at the user's risk.
9. In no event will Datanet be liable for any damages (including, without limitation, damages for loss of business projects, or loss of profits) arising in contract, tort or otherwise from the use of or inability to use any of its contents, or from any action taken (or refrained from being taken) as a result of using the analysis or any of its contents. Datanet its directors, owners, editors, officials, employees, distributor and agents or any associate will not be liable for any errors in the information contained or any consequences arising from the use of the contents of the provided information/analysis.
10. If any provision of these terms and conditions is held invalid or illegal or unenforceable for any reason by any court of competent jurisdiction, such provision shall be severed and the remainder of provisions of the terms and conditions shall continue in full force and effect as if the Term of Use had been executed with the invalid, illegal or unenforceable provision eliminated.
11. If there are any discrepancies in the information provided, please bring it to attention of Datanet for suitable rectification measures.

Buy Online This Complete Book At
Datanet India eBooks Store

www.indiastatpublications.com

or go directly at

[http://www.indiastatpublications.com/
Assembly_factbook/Tamil_Nadu/Dharmapuri/ Pennagaram](http://www.indiastatpublications.com/Assembly_factbook/Tamil_Nadu/Dharmapuri/Pennagaram)

 **indiastat**elections

