



Tamil Nadu

Assembly Factbook™

Natham Assembly Constituency



Key Electoral Data of Natham
Assembly Constituency (Vidhan Sabha)

Tamil Nadu

Assembly Factbook™

Natham Assembly Constituency



Natham Vidhan Sabha

Editor & Director

Dr. R.K. Thukral

Research Editor

Dr. Shafeeq Rahman

Compiled, Researched and Published by Datanet India Pvt. Ltd.

D-100, 1st Floor,

Okhla Industrial Area, Phase-I,
New Delhi- 110020.

Ph.: 91-11- 43580781-84

Email : support@indiastatpublications.com

Website : www.indiastatelections.com

Online Book Store :

www.indiastatpublications.com

Report No. : AFB/TN-131-0125

ISBN : 978-93-5313-806-6

First Edition : January, 2018

Eighth Updated Edition : January, 2025

Price : Rs. 11500/-

US\$ 310

© Datanet India Pvt. Ltd.

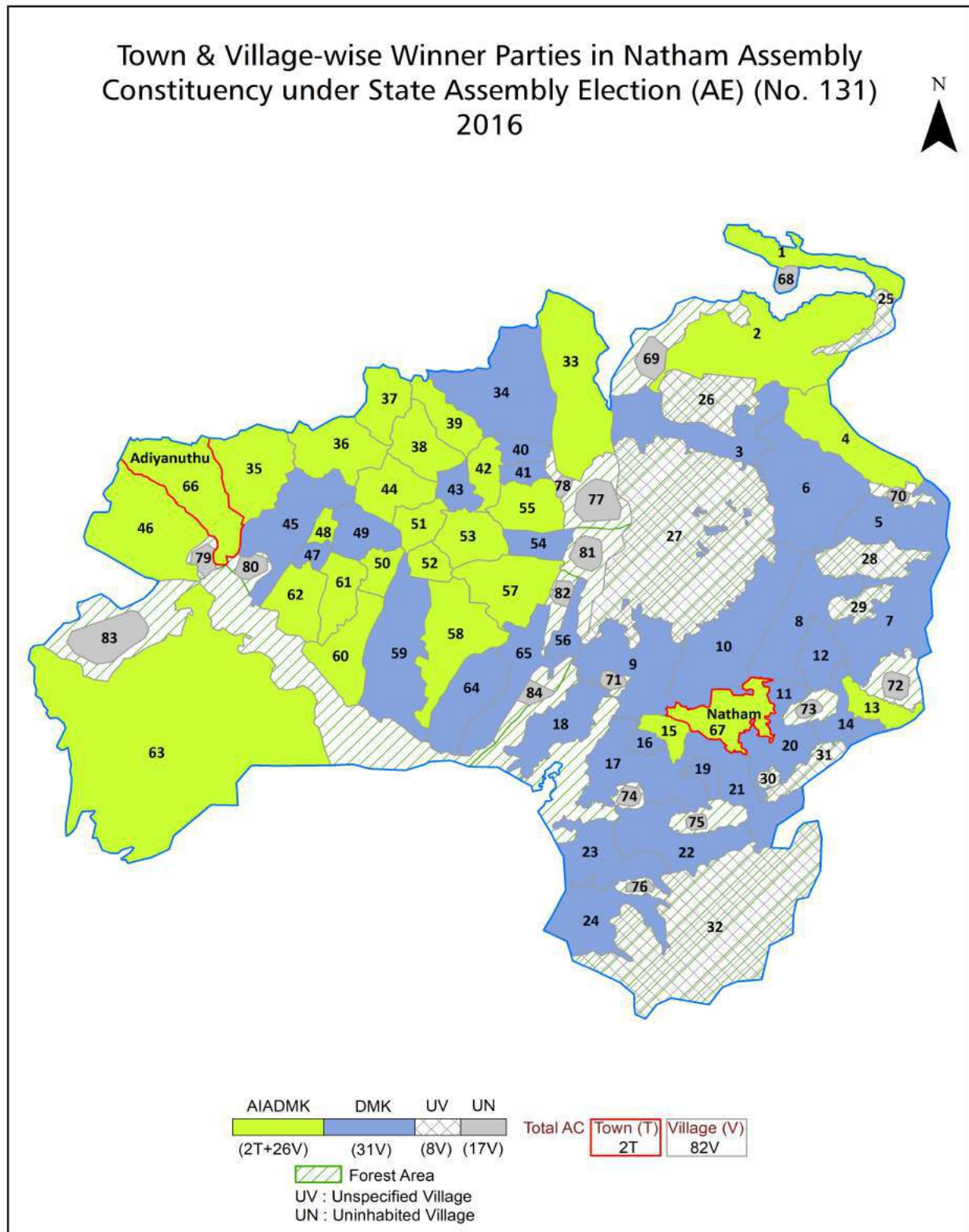
All rights reserved. No part of this book may be reproduced, stored in a retrieval system or transmitted in any form or by any means, mechanical photocopying, photographing, scanning, recording or otherwise without the prior written permission of the publisher. Please refer to Disclaimer at page no. 263 for the use of this publication.

Printed in India

Contents

No.	Particulars	Page No.
	Introduction	
1	Assembly Constituency - (Vidhan Sabha) at a Glance Features of Assembly as per Delimitation Commission of India (2008)	1-2
	Location and Political Maps	
2	Location Map Boundaries of Assembly Constituency - (Vidhan Sabha) in District Boundaries of Assembly Constituency under Parliamentary Constituency - (Lok Sabha) Town & Village-wise Winner Parties- 2024, 2021, 2019, 2016, 2014, 2011 and 2009	3-11
	Administrative Setup (2011)	
3	District Sub-district Towns Villages Inhabited Villages Uninhabited Villages Village Panchayat Intermediate Panchayat	12-16
	Demographics (2011)	
4	Population Households Rural/Urban Population Towns and Villages by Population Size Sex Ratio (Total & 0-6 Years) Religious Population Social Population Literacy Rate	17-18
	Electoral Features	
5	Important Dates of Last Elections Held Electors by Gender Service Electors Voters Voters Turnout Polling Stations & Average Number of Electors per Polling Station Electors by Age Group Present Elected Representatives	19-24
	Historical Summary Election Results	
6	Vote Share of Major Parties Winning Margin (Number & Percentage) Polarity of Parties Summary Result of Assembly Segment of Parliamentary Elections 2024, 2019, 2014, 2009, 2004 and 1999 Summary Result of Assembly Elections 2021, 2016, 2011, 2006, 2001, 1996, 1991, 1989, 1984, 1980 and 1977	25-44
	Polling Station Level Election Results	
7	Name and Number of Polling Station 2024, 2021, 2019, 2016, 2014, 2011 and 2009 Polling Station-wise Electors, Voters & Voters Turnout 2024, 2021, 2019, 2016, 2014, 2011 and 2009 Polling Station wise Elections Results 2024, 2021, 2019, 2016, 2014, 2011 and 2009	45-242
	Share of Assembly Constituency	
8	Share of Assembly Constituency - (Vidhan Sabha) in State, District and Parliamentary Constituency - (Lok Sabha)	243
	Socio-Economic Amenities (2011)	
9	Access to Administrative Units Agricultural, Manufacturing and Industrial Commodities Demographic Indicators Education Health & Manpower Drinking Water Supply Sanitation Entertainment and Recreations Infrastructure Power Food Allocation Distribution and Marketing of Agriculture Commodities Infrastructure Transport and Road Infrastructure Communication Banking and Financial Services Land Use Irrigation Source	244-259
10	Abbreviation & Sources	260-262
11	Disclaimer	263

Location & Political Map



Administrative Setup

List of Village Panchayat & Intermediate Panchayat (Block) Name - 2011

Village Name	Village Panchayat Name	Intermediate Panchayat Name
A.Vellodu	A.Vellodu	Dindigul
Alagar Hills R.F.	-	-
Anjukulipatti	Anjukulipatti	Shanarpatti
Avichchipatti	Avichchipatti	Natham
Avilipatti	Avilipatti	Shanarpatti
Budagudi	Budagudi	Natham
Chellappanaickenpatti	Chellappanaickenpatti	Natham
Emakkalapuram	Emakkalapuram	Shanarpatti
Idayapatti	Chellappanaickenpatti	Natham
Jothampatti	Thimmananalur	Shanarpatti
Kaluvadimalai R.F.	-	-
Kambiliampatti	Kambiliampatti	Shanarpatti
Kanavaipatti	Kanavaipatti	Shanarpatti
Karanthamalai R.F.	-	-
Kodangikuttu R.F.	-	-
Kombaipatti	Kombaipatti	Shanarpatti
Konapatti	Shanarpatti	Shanarpatti
Koovanuthu	Koovanuthu	Shanarpatti
Kottaiyur	Kottaiyur	Natham
Kudagipatti	Kudagipatti	Natham
Lingavadi	Lingavadi	Natham
Madur	Madur	Shanarpatti
Maranuthu	Marunuthu	Shanarpatti
Markkampatti	Vajraservaikarankottai	Shanarpatti
Methugumalai R.F.	-	-
Mottamalai R.F.	-	-
Mulaiyur	Mulaiyur	Natham
Nadumalai R.F.	-	-
Nadumandalam	Pudupatti, Kuttupatti	Natham

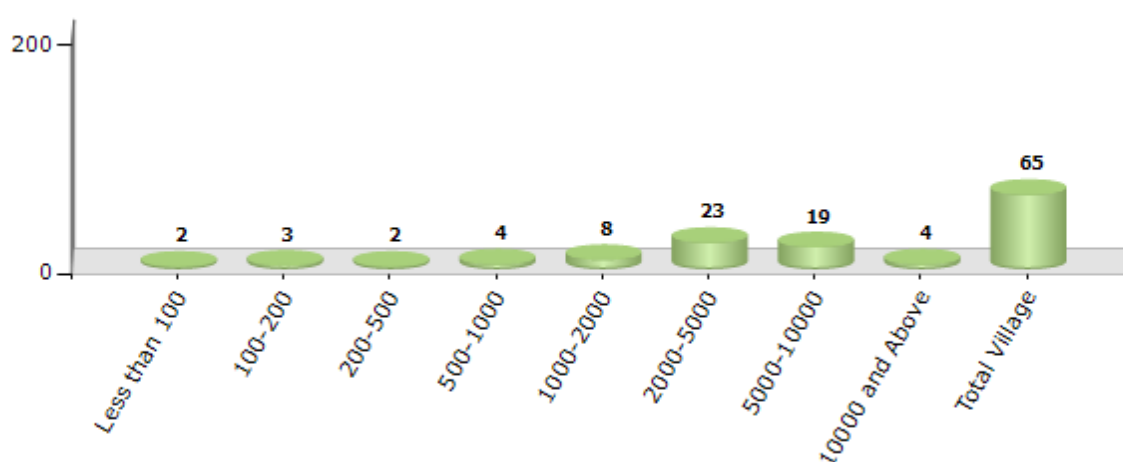
Contd....

Demographics

Number of Villages by Population Size - 2011

Less than 100	100-200	200-500	500-1000	1000-2000	2000-5000	5000-10000	10000 and Above	Total Village
2	3	2	4	8	23	19	4	65

Number of Villages by Population Size - 2011



Number of Towns by Population Size - 2011

Less than 4999	5000-9999	10000-19999	20000-49999	50000-99999	100000 and Above	Total Town
0	0	1	1	0	0	2

Number of Towns by Population Size - 2011

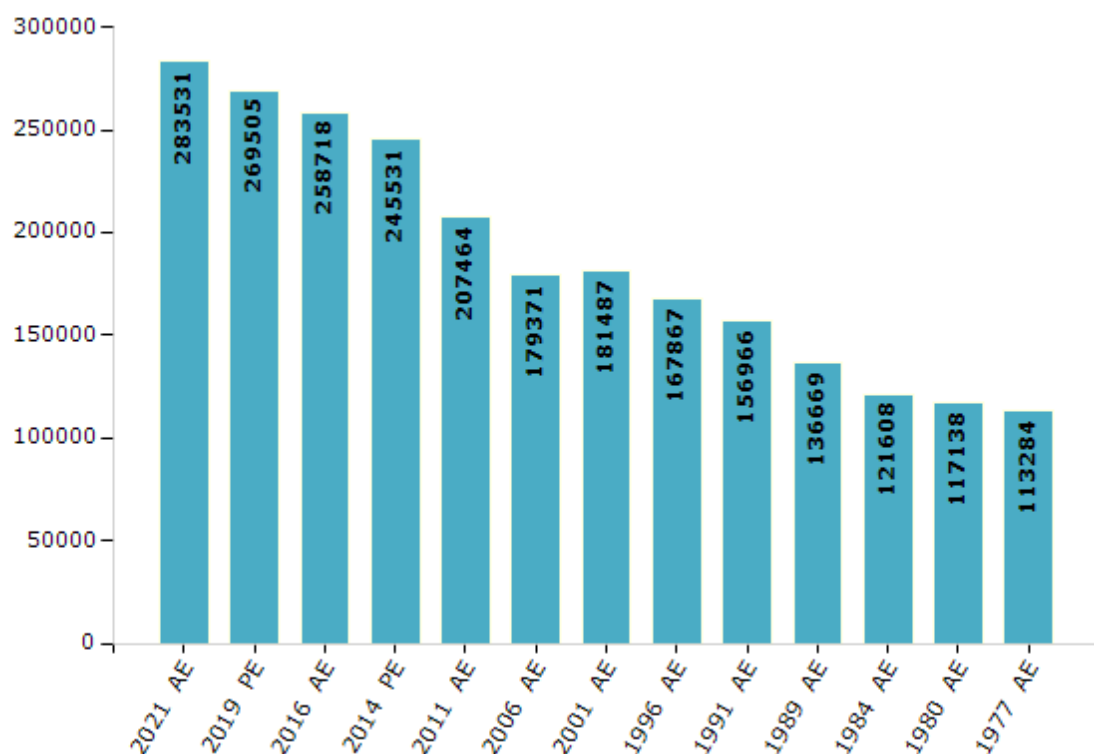


Electoral Features

Electors by Male & Female

Year	Male	Female	Others	Total	Year	Male	Female	Others	Total
2021 AE	138507	144977	47	283531	1999 PE	-	-	-	-
2019 PE	132358	137102	45	269505	1996 AE	83733	84134	-	167867
2016 AE	127696	130982	40	258718	1991 AE	78284	78682	-	156966
2014 PE	122432	123067	32	245531	1989 AE	67953	68716	-	136669
2011 AE	104168	103296	-	207464	1984 AE	60359	61249	-	121608
2009 PE	-	-	-	-	1980 AE	57957	59181	-	117138
2006 AE	87920	91451	-	179371	1977 AE	55703	57581	-	113284
2004 PE	-	-	-	-	1971 AE	-	-	-	-
2001 AE	90114	91373	-	181487	1967 AE	-	-	-	-

Number of Electors



Note : AE : Assembly Election, PE : Assembly Segment of Parliamentary Election

Historical Summary Election Results

Summary Result of Assembly Election - 2016

Candidate Name	Party	Votes	Votes %
Andi Ambalam M.A	DMK	93822	45.32
Shajahan S	AIADMK	91712	44.3
Karthikeyan G	DMDK	9373	4.53
Sivasankaran V.Dr	NTK	2393	1.16
Vadivel M	IND	1182	0.57
Seerangan K	PMK	1155	0.56
Murugasan C	IND	1065	0.51
Sandhanakrishan M	IJK	1044	0.5
Krisnamoorthi P	BSP	649	0.31
Balamurugan T	IND	550	0.27
Jeyapal R	IND	348	0.17
Alagu A	IND	335	0.16
Senthilvelu V	IND	314	0.15
Pandi C	RSPS	259	0.13
Ponnan K	IND	258	0.12
Balaguru R	IND	228	0.11
Pitchaimuthu M	IND	206	0.1
Venkatesan G	IND	163	0.08
Chinnadurai M	IND	111	0.05
	NOTA	1844	0.89

Polling Station Level Election Results

Number and Name of Polling Stations (PS) (2021)

Number of Polling Stations	Name of Polling Stations	Number of Polling Stations	Name of Polling Stations
1	St.Britto Aided High School South Facing Building (West Portion) Pugailaipatty-624306	17A	P.U.Middle School East Side, Ammapatti-624306
2	St.Britto Aided High School South Facing Building (East Portion) Pugailaipatty-624306	18	P.U.Middle School, Nilapattipudur-624306
3	St.Britto Aided High School Western Building 5Th Room ,Pugailaipatty-624306	19	P.U.Middle .School South Facing Building
3A	St.Britto Aided High School Western Building 5Th Room ,Pugailaipatty-624306	20	P.U.Middle .School North Building ,Kattupatti-624306
4	St.Britto Aided High School East Side Building ,Pugailaipatty-624306	21	Panchayat Union Middle School North Facing Building (East Side) ,Vallampatti-624306
4A	St.Britto Aided High School East Side Building ,Pugailaipatty-624306	22	Panchayat Union Middle School North Facing Building (West Side) ,Vallampatti-624306
5	St. James R.C. Ele School East Building ,Vangammanuthu-624306	23	P.U.Middle School West Facing Building ,Vallampatti-624306
5A	St. James R.C. Ele School East Building ,Vangammanuthu-624306	24	Panchayat Union Ele School Northern Building, Senkurichi-624306
6	Hindu Aided Primary School, Kothapulipatti	25	Panchayat Union Ele School North Facing, South Side
7	P.U. Ele School South Facing Building ,Siluvathur-624306	26	Panchayat Union Ele. School New Building Western Side ,Senkurichi-624306
8	P.U.Primary School, West Facing East Moulding Building, Pethaiyagoundanpatti	27	Panchayat Union Ele. School Add., West
9	Govt.High School West Facing Building (East Side) ,Siluvathur	28	P.U. Middle School Addl. Building ,Alampatti-624306
10	Govt.High School East Facing West Building Siluvathur-624306	29	P.U. Middle School North Facing Building
11	Govt.High School West Facing, East Building, Siluvathur-624306	30	P.U.Ele.School ,Pudupatti-624306
12	Govt Hr.Sec. School South Facing Building (East Side) ,Kambiliyampatti-624306	30A	P.U.Ele.School ,Pudupatti-624306
13	Govt Higher School South Facing Building (West Side) ,Kambiliyampatti-624306	31	P.U.Ele.School North Building ,V.S.K.Kurumbapatti624306
14	P.U.Ele. School, Koothampatti	31A	P.U.Ele.School North Building ,V.S.K.Kurumbapatti624306
15	P.U.Ele. School, K. Andiyapatti	32	P.U.Ele.School West Side Building Eastern Side ,V.S.K.Kurumbapatti624306
16	P.U.Ele.School ,Narivilampatti-624306	33	P.U. Elementary School ,Silvarpatti -624306
16A	P.U.Ele.School ,Narivilampatti-624306	33A	P.U. Elementary School ,Silvarpatti -624306
17	P.U.Middle School East Side, Ammapatti-624306	34	Panchayat Union Middle School Western New Building, Markampatti624306

Contd....

Polling Station Level Election Results

Polling Station-wise Votes Secured by Overall Top Five Parties in Natham Assembly in Assembly Election (AE) under Dindigul Parliamentary Constituency in Tamil Nadu (2021)

Number of Polling Station	Winner - Natham.R. Viswanathan (AIADMK)	Runner-up - M.A.Andi Ambalam (DMK)	3rd - Doctor.V. Sivasankaran (NTK)	4th - N.Raja (AMMKMNKZ)	5th - R.A. Saranraj (IJK)	NOTA	Other	Total Votes Secured
30A	309	202	5	0	4	4	18	542
31	204	275	30	5	0	5	1	520
31A	247	230	7	2	3	5	13	507
32	266	417	29	1	3	2	5	723
33	180	226	39	3	0	2	5	455
33A	225	272	19	0	2	0	5	523
34	276	248	35	4	2	7	4	576
35	270	177	21	3	4	0	4	479
36	199	162	27	3	2	3	5	401
36A	265	139	11	2	1	1	0	419
37	220	107	24	0	3	2	0	356
38	202	189	15	5	1	0	4	416
39	392	175	44	2	4	2	8	627
40	314	351	24	2	3	4	7	705
41	415	191	30	10	3	3	10	662
42	378	287	49	2	5	5	14	740
43	504	251	29	0	3	4	11	802
44	333	377	109	2	3	4	14	842
45	245	300	18	2	3	2	3	573
46	305	425	43	11	5	9	12	810
47	212	239	51	4	0	4	12	522
47A	256	210	16	2	3	9	8	504
48	388	324	39	1	2	2	11	767
49	229	217	45	2	3	1	4	501
49A	282	178	13	0	1	6	11	491
50	270	153	57	1	0	1	3	485
50A	400	135	25	1	1	0	11	573
51	483	287	43	11	4	6	19	853
52	136	188	30	1	1	1	3	360
53	183	239	56	1	1	1	7	488
53A	233	275	23	1	1	7	7	547
54	285	159	30	3	6	2	5	490
55	244	135	56	2	1	3	2	443
55A	307	111	30	2	9	5	11	475
56	298	185	25	1	3	7	7	526

Contd....

Polling Station Level Election Results

Winner, Runner-up and 3rd Party Position & Winning Margin According to Polling Stations in Natham Assembly in Assembly Election (AE) under Dindigul Parliamentary Constituency in Tamil Nadu (2021)

Polling Station Number	Winner Party	Winner Votes (%)	Runner-up Party	Runner-up Votes (%)	Winning Margin Votes (%)	Third Party	Third Party Votes (%)	Other Votes (%)
59A	AIADMK	211 (43.96)	DMK	208 (43.33)	3 (0.63)	NTK	40 (8.33)	21 (4.38)
60	DMK	354 (49.24)	AIADMK	263 (36.58)	91 (12.66)	NTK	71 (9.87)	31 (4.31)
61	AIADMK	177 (42.65)	DMK	164 (39.52)	13 (3.13)	NTK	63 (15.18)	11 (2.65)
62	DMK	242 (45.07)	AIADMK	223 (41.53)	19 (3.54)	NTK	47 (8.75)	25 (4.66)
63	AIADMK	264 (44.59)	DMK	234 (39.53)	30 (5.06)	NTK	69 (11.66)	25 (4.22)
64	AIADMK	259 (46.25)	DMK	230 (41.07)	29 (5.18)	NTK	51 (9.11)	20 (3.57)
65	AIADMK	187 (43.39)	DMK	172 (39.91)	15 (3.48)	NTK	48 (11.14)	24 (5.57)
65A	AIADMK	213 (52.72)	DMK	151 (37.38)	62 (15.34)	NTK	26 (6.44)	14 (3.47)
66	AIADMK	382 (54.26)	DMK	265 (37.64)	117 (16.62)	NTK	41 (5.82)	16 (2.27)
67	AIADMK	319 (52.81)	DMK	226 (37.42)	93 (15.39)	NTK	44 (7.28)	15 (2.48)
68	AIADMK	274 (61.3)	DMK	116 (25.95)	158 (35.35)	NTK	42 (9.4)	15 (3.36)
68A	AIADMK	326 (73.59)	DMK	86 (19.41)	240 (54.18)	NTK	18 (4.06)	13 (2.93)
69	AIADMK	489 (59.93)	DMK	241 (29.53)	248 (30.4)	NTK	51 (6.25)	35 (4.29)
70	AIADMK	350 (44.99)	DMK	348 (44.73)	2 (0.26)	NTK	63 (8.1)	17 (2.19)
71	AIADMK	240 (55.3)	DMK	117 (26.96)	123 (28.34)	NTK	62 (14.29)	15 (3.46)
72	AIADMK	485 (63.4)	DMK	164 (21.44)	321 (41.96)	NTK	97 (12.68)	19 (2.48)
73	AIADMK	224 (55.04)	DMK	131 (32.19)	93 (22.85)	NTK	39 (9.58)	13 (3.19)
73A	AIADMK	305 (65.45)	DMK	123 (26.39)	182 (39.06)	NTK	26 (5.58)	12 (2.58)
74	AIADMK	299 (65.86)	DMK	102 (22.47)	197 (43.39)	NTK	42 (9.25)	11 (2.42)
74A	AIADMK	310 (70.14)	DMK	100 (22.62)	210 (47.52)	NTK	15 (3.39)	17 (3.85)
75	AIADMK	256 (55.17)	DMK	117 (25.22)	139 (29.95)	NTK	73 (15.73)	18 (3.88)
75A	AIADMK	308 (65.25)	DMK	117 (24.79)	191 (40.46)	NTK	29 (6.14)	18 (3.81)
76	AIADMK	531 (73.55)	DMK	128 (17.73)	403 (55.82)	NTK	46 (6.37)	17 (2.35)
77	AIADMK	276 (68.15)	DMK	73 (18.02)	203 (50.13)	NTK	33 (8.15)	23 (5.68)
78	AIADMK	204 (48.69)	DMK	161 (38.42)	43 (10.27)	NTK	46 (10.98)	8 (1.91)
78A	AIADMK	272 (60.85)	DMK	140 (31.32)	132 (29.53)	NTK	23 (5.15)	12 (2.68)
79	AIADMK	336 (58.33)	DMK	199 (34.55)	137 (23.78)	NTK	34 (5.9)	7 (1.22)
80	DMK	215 (48.86)	AIADMK	148 (33.64)	67 (15.22)	NTK	71 (16.14)	6 (1.36)
80A	DMK	231 (46.86)	AIADMK	201 (40.77)	30 (6.09)	NTK	49 (9.94)	12 (2.43)
81	AIADMK	473 (61.11)	DMK	197 (25.45)	276 (35.66)	NTK	76 (9.82)	28 (3.62)
82	AIADMK	444 (51.33)	DMK	322 (37.23)	122 (14.1)	NTK	75 (8.67)	24 (2.77)
83	AIADMK	240 (46.42)	DMK	191 (36.94)	49 (9.48)	NTK	77 (14.89)	9 (1.74)
84	AIADMK	279 (51.29)	DMK	203 (37.32)	76 (13.97)	NTK	45 (8.27)	17 (3.13)
85	AIADMK	173 (41.79)	DMK	171 (41.3)	2 (0.49)	NTK	59 (14.25)	11 (2.66)
85A	AIADMK	253 (53.6)	DMK	166 (35.17)	87 (18.43)	NTK	38 (8.05)	15 (3.18)
86	AIADMK	169 (43.56)	DMK	147 (37.89)	22 (5.67)	NTK	55 (14.18)	17 (4.38)
87	DMK	349 (48.54)	AIADMK	264 (36.72)	85 (11.82)	NTK	78 (10.85)	28 (3.89)

Contd....

Socio-Economic Amenities - Rural

Access to Education Facilities

Particulars	Number of Villages (% of Population)				
	Available	Not Available	If Not Available (Distance of Nearest Facility)		
			A	B	C
Govt. Primary School	57 (99)	8 (1)	6 (0)	2 (0)	0 (0)
Private Primary School	22 (50)	43 (50)	0 (0)	0 (0)	0 (0)
Govt. Middle School	42 (81)	23 (19)	10 (6)	5 (1)	0 (0)
Private Middle School	13 (33)	52 (67)	2 (2)	0 (0)	0 (0)
Govt. Secondary School	17 (47)	48 (53)	16 (17)	22 (19)	2 (4)
Private Secondary School	10 (28)	55 (72)	2 (4)	2 (3)	0 (0)
Govt. Senior Secondary School	11 (34)	54 (66)	17 (19)	27 (27)	3 (6)
Private Senior Secondary School	4 (14)	61 (86)	2 (5)	3 (4)	0 (0)
Govt. Arts and Science Degree College	0 (0)	65 (100)	0 (0)	3 (6)	14 (16)
Private Arts and Science Degree College	0 (0)	65 (100)	3 (6)	8 (16)	37 (57)
Govt. Engineering College	0 (0)	65 (100)	0 (0)	2 (4)	10 (12)
Private Engineering College	0 (0)	65 (100)	2 (4)	9 (18)	42 (63)
Govt. Medicine College	0 (0)	65 (100)	0 (0)	0 (0)	65 (100)
Private Medicine College	0 (0)	65 (100)	0 (0)	0 (0)	0 (0)
Govt. Management Institute	0 (0)	65 (100)	0 (0)	0 (0)	25 (43)
Private Management Institute	0 (0)	65 (100)	0 (0)	8 (14)	32 (44)
Govt. Polytechnic	0 (0)	65 (100)	0 (0)	0 (0)	8 (17)
Private Polytechnic	0 (0)	65 (100)	1 (2)	10 (18)	46 (64)
Govt. Vocational Training School/ITI	0 (0)	65 (100)	0 (0)	4 (11)	52 (82)
Private Vocational Training School/ITI	0 (0)	65 (100)	0 (0)	0 (0)	9 (7)
Govt. Non Formal Training Centre	22 (50)	43 (50)	0 (0)	2 (4)	40 (45)
Private Non Formal Training Centre	22 (50)	43 (50)	0 (0)	0 (0)	1 (1)
Govt. School For Disabled	0 (0)	65 (100)	0 (0)	4 (11)	56 (83)
Private School For Disabled	0 (0)	65 (100)	0 (0)	0 (0)	5 (7)
Government Others	0 (0)	65 (100)	0 (0)	0 (0)	0 (0)
Private Others	0 (0)	65 (100)	0 (0)	0 (0)	0 (0)

Note : Distance A : Less than 5 km; B : Between 5-10 km; C : 10+ km.; Source : Data Analysis is based on 2011 Census.

DISCLAIMER

The Terms of Use and Disclaimer of Datanet India Private Limited (hereinafter referred to as "Datanet") for use of this analysis report of **Natham Assembly Constituency (Natham Vidhan Sabha)** :-

1. **Assembly Factbook™** is a Registered Trade Mark owned by Datanet.
2. All the maps are sketched and graphical representation only and have not been drawn to the scale and also not to represent the actual geographical area or boundary of the unit.
3. The data for the aforesaid analysis is based on authentic sources and has been culled from the various publications of Census, CSO and NSSO for district and block level data, various central and state government departments, Central & State Elections Commissions and the concerned Returning Officers' releases, Electoral Rolls, Election results and allied publications, internal assessment, surveys, estimates and analysis. Therefore, certain adjustment of data at micro level may have been done to arrive closer to the macro data.
4. Data have been provided on an "As Is" and "As AVAILABLE" basis
5. The colours shown in the maps or diagram and charts of a particular party, alliance or AC are indicative and do not represent them.
6. This publication which includes maps, sheets, graphs and data would be the property under copyright of Datanet only. The user may use these for its internal study, analysis and research purposes. It's public display, re-selling or any commercial uses by the user are not allowed.
7. Datanet has taken due care and caution in compilation and processing of data and allied information, but does not guarantee the accuracy, adequacy or completeness of any information/analysis and will be not responsible for any errors or omissions or for the results obtained from the use of such information/analysis.
8. All the contents for the publication have been culled from various authentic sources and Datanet reasonably believes such sources to be reliable, but does not make any representations, express or implied as to the accuracy or fitness of use of such information. The information or contents of the information/analysis do not constitute advice and should not be relied upon in making (or refraining from making) any decision. Any reliance placed upon the information provided by Datanet is the sole responsibility and strictly at the user's risk.
9. In no event will Datanet be liable for any damages (including, without limitation, damages for loss of business projects, or loss of profits) arising in contract, tort or otherwise from the use of or inability to use any of its contents, or from any action taken (or refrained from being taken) as a result of using the analysis or any of its contents. Datanet its directors, owners, editors, officials, employees, distributor and agents or any associate will not be liable for any errors in the information contained or any consequences arising from the use of the contents of the provided information/analysis.
10. If any provision of these terms and conditions is held invalid or illegal or unenforceable for any reason by any court of competent jurisdiction, such provision shall be severed and the remainder of provisions of the terms and conditions shall continue in full force and effect as if the Term of Use had been executed with the invalid, illegal or unenforceable provision eliminated.
11. If there are any discrepancies in the information provided, please bring it to attention of Datanet for suitable rectification measures.

Buy Online This Complete Book At
Indiastat Publication Book Store

www.indiastatpublications.com

or go directly at

[http://www.indiastatpublications.com/
Assembly_factbook/Tamil_Nadu/Dindigul/ Natham](http://www.indiastatpublications.com/Assembly_factbook/Tamil_Nadu/Dindigul/Natham)

 **indiastat**elections

