



Tamil Nadu

Assembly Factbook™

Palani Assembly Constituency



Key Electoral Data of Palani
Assembly Constituency (Vidhan Sabha)

Tamil Nadu

Assembly Factbook™

Palani Assembly Constituency



Palani Vidhan Sabha

Editor & Director

Dr. R.K. Thukral

Research Editor

Dr. Shafeeq Rahman

Compiled, Researched and Published by Datanet India Pvt. Ltd.

D-100, 1st Floor,

Okhla Industrial Area, Phase-I,
New Delhi- 110020.

Ph.: 91-11- 43580781-84

Email : support@indiastatpublications.com

Website : www.indiastatelections.com

Online Book Store :

www.indiastatpublications.com

Report No. : AFB/TN-127-0125

ISBN : 978-93-5313-815-8

First Edition : January, 2018

Eighth Updated Edition : January, 2025

Price : Rs. 11500/-

US\$ 310

© **Datanet India Pvt. Ltd.**

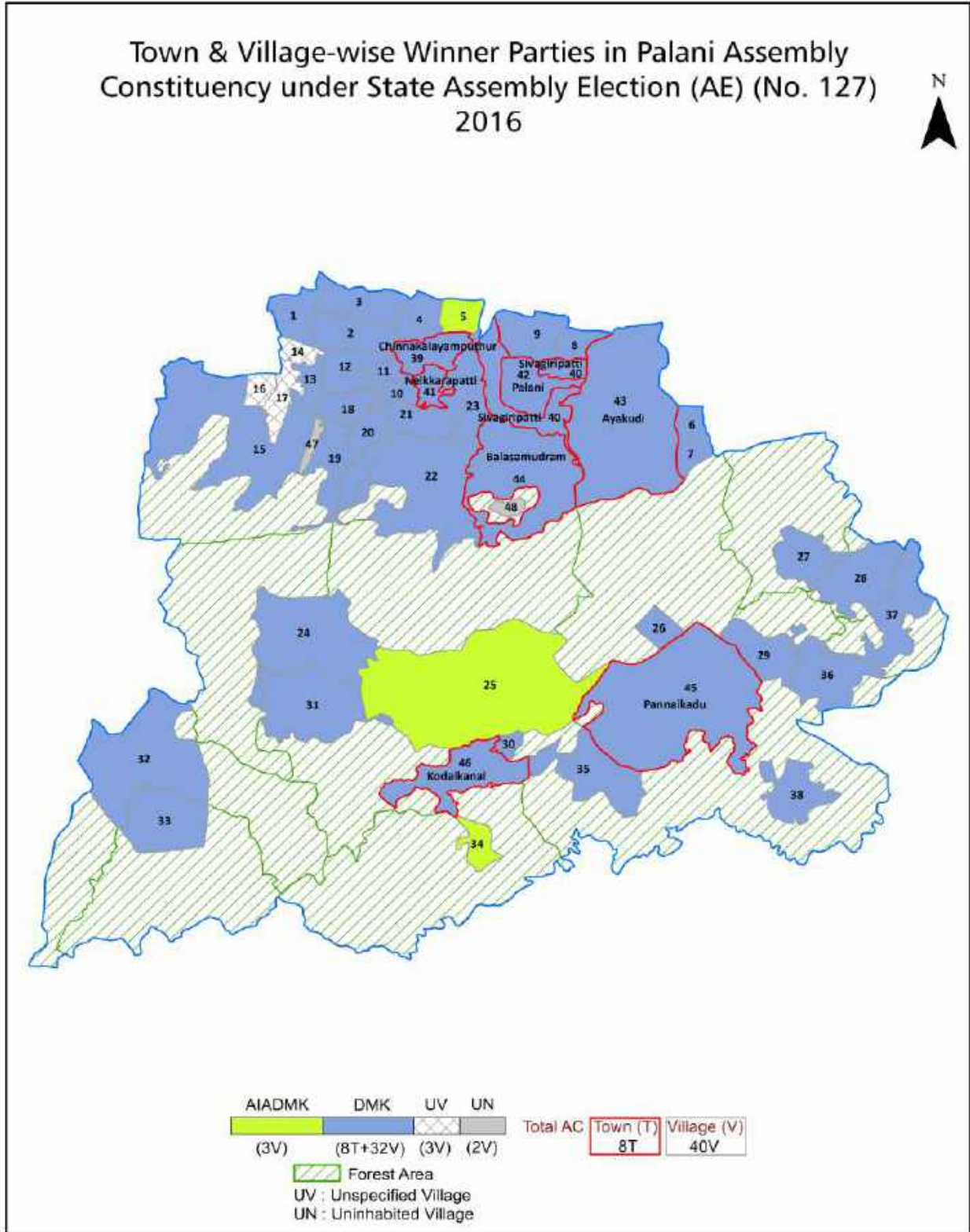
All rights reserved. No part of this book may be reproduced, stored in a retrieval system or transmitted in any form or by any means, mechanical photocopying, photographing, scanning, recording or otherwise without the prior written permission of the publisher. Please refer to Disclaimer at page no. 258 for the use of this publication.

Printed in India

Contents

No.	Particulars	Page No.
	Introduction	
1	Assembly Constituency - (Vidhan Sabha) at a Glance Features of Assembly as per Delimitation Commission of India (2008)	1-2
	Location and Political Maps	
2	Location Map Boundaries of Assembly Constituency - (Vidhan Sabha) in District Boundaries of Assembly Constituency under Parliamentary Constituency - (Lok Sabha) Town & Village-wise Winner Parties- 2024, 2021, 2019, 2016, 2014, 2011 and 2009	3-11
	Administrative Setup (2011)	
3	District Sub-district Towns Villages Inhabited Villages Uninhabited Villages Village Panchayat Intermediate Panchayat	12-15
	Demographics (2011)	
4	Population Households Rural/Urban Population Towns and Villages by Population Size Sex Ratio (Total & 0-6 Years) Religious Population Social Population Literacy Rate	16-17
	Electoral Features	
5	Important Dates of Last Elections Held Electors by Gender Service Electors Voters Voters Turnout Polling Stations & Average Number of Electors per Polling Station Electors by Age Group Present Elected Representatives	18-23
	Historical Summary Election Results	
6	Vote Share of Major Parties Winning Margin (Number & Percentage) Polarity of Parties Summary Result of Assembly Segment of Parliamentary Elections 2024, 2019, 2014, 2009, 2004 and 1999 Summary Result of Assembly Elections 2021, 2016, 2011, 2006, 2001, 1996, 1991, 1989, 1984, 1980, 1977, 1971 and 1967	24-45
	Polling Station Level Election Results	
7	Name and Number of Polling Station 2024, 2021, 2019, 2016, 2014, 2011 and 2009 Polling Station-wise Electors, Voters & Voters Turnout 2024, 2021, 2019, 2016, 2014, 2011 and 2009 Polling Station wise Elections Results 2024, 2021, 2019, 2016, 2014, 2011 and 2009	46-237
	Share of Assembly Constituency	
8	Share of Assembly Constituency - (Vidhan Sabha) in State, District and Parliamentary Constituency - (Lok Sabha)	238
	Socio-Economic Amenities (2011)	
9	Access to Administrative Units Agricultural, Manufacturing and Industrial Commodities Demographic Indicators Education Health & Manpower Drinking Water Supply Sanitation Entertainment and Recreations Infrastructure Power Food Allocation Distribution and Marketing of Agriculture Commodities Infrastructure Transport and Road Infrastructure Communication Banking and Financial Services Land Use Irrigation Source	239-254
10	Abbreviation & Sources	255-257
11	Disclaimer	258

Location & Political Map



Administrative Setup

List of Village Panchayat & Intermediate Panchayat (Block) Name - 2011

Village Name	Village Panchayat Name	Intermediate Panchayat Name
Sukkamanaickenpatti	Pethanaickenpatti	Palani
Tamaraikulam	Thamaraikulam	Palani
Thandigudi	Thandigudi	Kodaikanal
Thathanaickenpatti (N)	Thathanaickenpatti	Palani
Thathanaickenpatti (South)	Thathanaickenpatti	Palani
Vadagouchi	Vadagouchi	Kodaikanal
Adukkam	Adukkam	Kodaikanal
Vellagavi	Vellagavi	Kodaikanal
A-Kalayamputhur	Karadikootam, A-Kalayamputhur	Palani
Velusamudram	Ayyampalayam	Palani
Andipatti	Andipatti	Palani
Vilpatti	Vilpatti	Kodaikanal
Ayyampalayam	Ayyampalayam	Palani
Chithraikulam	Sithraikulam	Palani
Cinnampatti	Andipatti	Palani
Iravimangalam	Kavalapatti	Palani
Kalickkanaickenpatti	Kalickkanaickenpatti	Palani
Kamanur	Kamanur	Kodaikanal
Kavalapatti	Kavalapatti	Palani
Kilakkuchettipatti	Kilakkuchettipatti	Kodaikanal
Kodaikanal	Vilpatti , Adukkam	Kodaikanal
Kodaimangalam	Kothaimangalam	Palani
Kombaipatti	Kanakkanpatti	Palani
Kookkal	Kookkal	Kodaikanal
Mannavanur	Mannavanur	Kodaikanal
Neikarapatti	Karadikootam	Palani
Pachalanaickenpatti	Pachalanaickenpatti	Palani
Pachalur	Pachalur	Kodaikanal
Pappampatti	Pappampatti	Palani

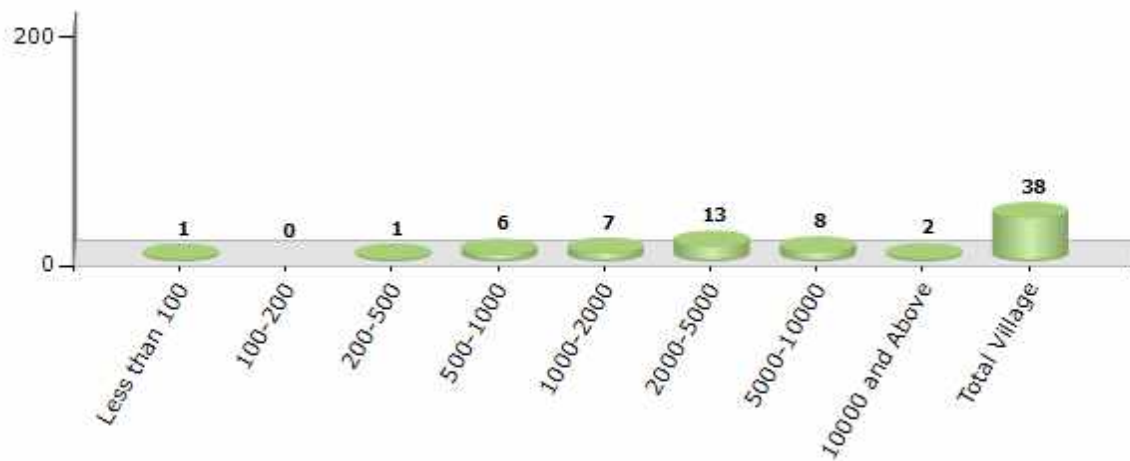
Contd....

Demographics

Number of Villages by Population Size - 2011

Less than 100	100-200	200-500	500-1000	1000-2000	2000-5000	5000-10000	10000 and Above	Total Village
1	0	1	6	7	13	8	2	38

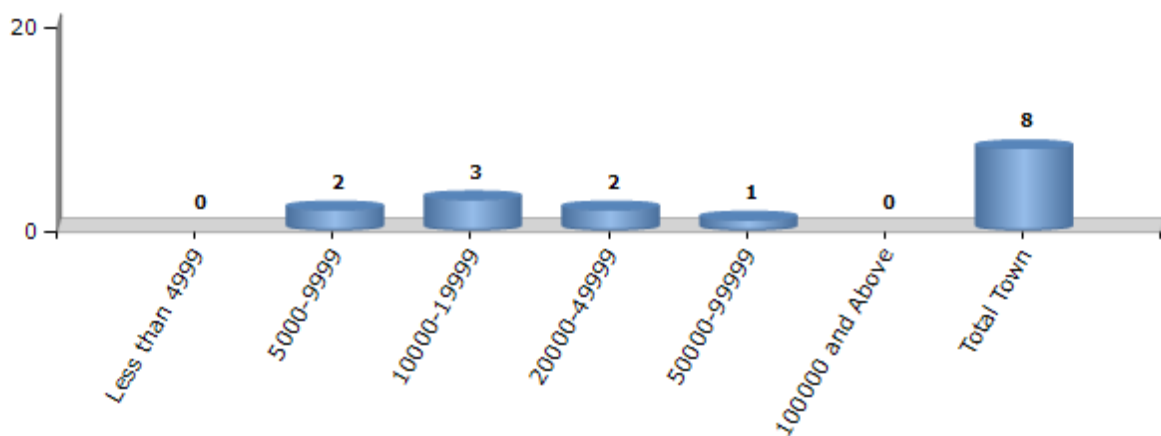
Number of Villages by Population Size - 2011



Number of Towns by Population Size - 2011

Less than 4999	5000-9999	10000-19999	20000-49999	50000-99999	100000 and Above	Total Town
0	2	3	2	1	0	8

Number of Towns by Population Size - 2011

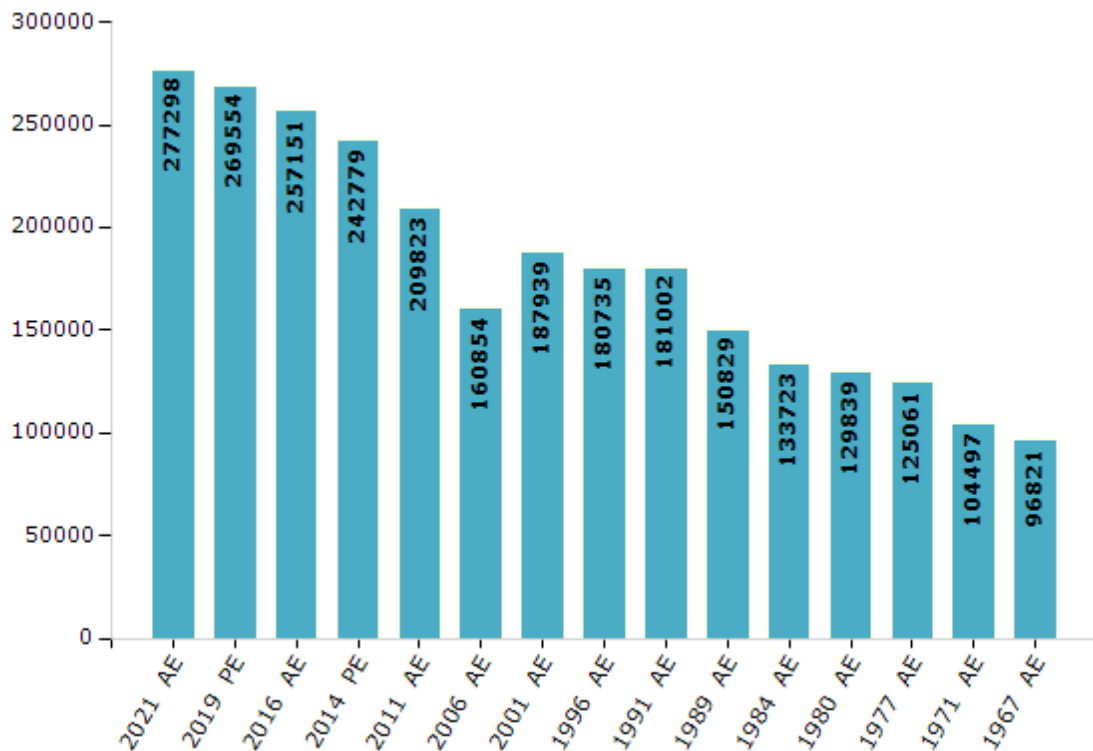


Electoral Features

Electors by Male & Female

Year	Male	Female	Others	Total	Year	Male	Female	Others	Total
2021 AE	135673	141590	35	277298	1999 PE	-	-	-	-
2019 PE	132543	136980	31	269554	1996 AE	91067	89668	-	180735
2016 AE	127468	129655	28	257151	1991 AE	91695	89307	-	181002
2014 PE	121365	121390	24	242779	1989 AE	76390	74439	-	150829
2011 AE	105536	104287	-	209823	1984 AE	67068	66655	-	133723
2009 PE	-	-	-	-	1980 AE	65116	64723	-	129839
2006 AE	79873	80981	-	160854	1977 AE	62813	62248	-	125061
2004 PE	-	-	-	-	1971 AE	50678	53819	-	104497
2001 AE	94503	93436	-	187939	1967 AE	-	-	-	96821

Number of Electors



Note : AE : Assembly Election, PE : Assembly Segment of Parliamentary Election

Historical Summary Election Results

Summary Result of Assembly Election - 2016

Candidate Name	Party	Votes	Votes %
Senthilkumar I P	DMK	100045	50.66
Kumarasamy P	AIADMK	74459	37.71
Rajamanickam V	CPM	9687	4.91
Kanagaraj N	BJP	4092	2.07
Kyzer A	SDPI	1370	0.69
Vinoth Rajasekaran G	NTK	876	0.44
Sivakumar T	IND	594	0.3
Nagendran P	BSP	587	0.3
Madurai Veeran K A	IND	580	0.29
Maheswaran P	IND	572	0.29
Nagarajan B	PMK	490	0.25
Chinnaraj A	IND	445	0.23
Mohamed Jabbar M	IND	348	0.18
Sickander K	IND	345	0.17
Sirajdeen N	IND	343	0.17
Krishnamoorthi R	KMDK	224	0.11
Kumaresan S	IND	192	0.1
Sundaram C	IND	184	0.09
Manoharan K	IND	152	0.08
Ravi Paul G	ICF	124	0.06
Thangapandiyan R	IND	107	0.05
Kaja A	IND	103	0.05
Muthu Karuppanan M	IND	95	0.05
	NOTA	1460	0.74

Polling Station Level Election Results

Number and Name of Polling Stations (PS) (2021)

Number of Polling Stations	Name of Polling Stations	Number of Polling Stations	Name of Polling Stations
1	Panchayat Union Middle School North Facing South,Main Building Ayyampalayam-624621	18A	P.U.Pry School, South Facing Building Javagarnagar,Kothaimangalam624601
2	Panchayat Union Elementary School,Chinnagoundenputhur624621	19	Vanan Middle School New Building Facing North First Building ,Kalikkanaickanpatty624601
3	Panchayat Union Middle School South Facing North , Addl Building Ayyampalayam-624621	20	Vanan Middle School,Old Building Facing West ,Kalikkanaickanpatty-624601
4	Panchayat Union Ele School, Chitraikulam -624621	21	P.U.Primary School North Facing Old Building , Pachalanaickanpatty-624613
5	Panchayat Union Ele School North Building (South Facing) Mallaiagoundenpatty - 624621	22	P.U.Primary School South Facing New Building , Pachalanaickanpatty-624613
6	Panchayat Union Middle Schoolnorth Facing New Building ,Pethanaickenpatty-624615	22A	P.U.Primary School South Facing New Building , Pachalanaickanpatty-624613
6A	Panchayat Union Middle Schoolnorth Facing New Building ,Pethanaickenpatty-624615	23	P.Union Middle School,East Portion,South Facing New Building Kombaipatty
7	Panchayat Union Middle Schoolsouth Facing North Side West Building ,Pethanaickenpatty624615	24	P.U.Middle School South Facing New Building, Kombaipatti-624613
8	Panchayat Union Primary School North Facing,South Portion, Sukkamanaickanpatty624615	25	Govt High School South West Corner North Facing Building East Ayakudi
9	Panchayat Union Primary School ,Main Building Samathuvapuram-624615	25A	Govt High School South West Corner North Facing Building East Ayakudi
10	Panchayat Union Middle School West Facing East Building ,Kothaimangalam-624618	26	P.U.Ele.School South Facing New Building Block -5. East Ayakudi-624613
10A	Panchayat Union Middle School West Facing East Building ,Kothaimangalam-624618	27	P.U.Ele School East Facing West ,Building Block-3 , East Ayakudi624613
11	Panchayat Union Middle School North Facing Building ,Kothaimangalam-624618	27A	P.U.Ele School East Facing West ,Building Block-3 , East Ayakudi624613
12	Anganvadi Children Centre North Facing South Building,Kothamangalam	28	P.U.Ele School Southfacing Center Building Eastern Portion, East Ayakudi-624613
13	Panchayat Union Middle School East Facing Building ,Kothaimangalam-624618	28A	P.U.Ele School Southfacing Center Building Eastern Portion, East Ayakudi-624613
14	Panchayat Union Primary School South Facing Building West Portion, Karuppana Goundenvalasu-624601	29	P.U.Primary School , Anna Memorial Centenary Building East Portion (North Faceing Building), East Ayakudi-624613
15	Panchayat Union Primary School South Facing Building East Portion, Karuppana Goundenvalasu624601	30	P.U.Ele School Southfacing Centre Building West Portion, East Ayakudi-624613
16	P.U Primary School North Facing Terreced Building South Side East Portion ,Jawahar Nagar, Kothaimangalam-624601	31	P.U.Primary School , Anna Memorial Centenary Building North Facing (Western Portion), East Ayakudi-624613
16A	P.U Primary School North Facing Terreced Building South Side East Portion ,Jawahar Nagar, Kothaimangalam-624601	32	Govt High School Northwest Corner South Facting Building , East Ayakudi 624613
17	P.U .Primary School North Facing Terreced Building (West Portion) ,Jawahar Nagar, Kothaimangalam-624601	33	Govt High School East Facing Building West Corner Side East Ayakudi - 624613
18	P.U.Pry School, South Facing Building Javagarnagar,Kothaimangalam624601	33A	Govt High School East Facing Building West Corner Side East Ayakudi - 624613

Contd....

Polling Station Level Election Results

Polling Station-wise Votes Secured by Overall Top Five Parties in Palani Assembly in Assembly Election (AE) under Dindigul Parliamentary Constituency in Tamil Nadu (2021)

Number of Polling Station	Winner - Senthil Kumar I.P (DMK)	Runner-up - Ravi Manoharan K (AIADMK)	3rd - Vinoth Rajasekaran G (NTK)	4th - Poovendhan T (MNM)	5th - Veerakumar V (AMMKMNKZ)	NOTA	Other	Total Votes Secured
28A	318	116	7	9	3	1	13	467
29	74	78	1	0	2	0	0	155
30	312	185	14	14	6	1	11	543
31	293	176	12	12	16	1	19	529
32	359	352	22	8	6	4	14	765
33	232	193	19	14	7	4	16	485
33A	277	190	6	15	1	5	20	514
34	537	40	14	5	14	2	9	621
35	327	158	13	4	2	2	12	518
36	383	164	12	6	11	2	3	581
37	299	122	12	6	11	3	10	463
37A	304	162	6	3	10	3	12	500
38	311	29	7	12	2	0	1	362
39	116	71	2	1	0	0	8	198
40	442	41	8	3	16	1	1	512
41	495	158	20	13	11	1	12	710
42	214	264	17	9	6	5	10	525
43	216	232	11	22	10	8	14	513
44	276	146	35	7	7	0	7	478
45	311	197	42	12	2	0	5	569
46	193	149	29	15	9	3	6	404
46A	195	151	9	12	6	1	4	378
47	267	308	34	11	6	3	23	652
48	261	146	25	7	7	3	5	454
48A	245	191	8	10	1	3	10	468
49	437	267	15	2	5	3	22	751
50	260	452	38	6	8	0	5	769
51	314	357	10	5	14	3	8	711
52	415	247	23	0	11	3	5	704
53	266	267	30	19	17	3	9	611
54	250	155	15	45	11	8	6	490
55	196	141	30	22	4	7	7	407
56	299	172	32	25	8	7	2	545
57	234	177	31	12	4	6	6	470
58	204	119	15	17	2	5	7	369

Contd....

Polling Station Level Election Results

Winner, Runner-up and 3rd Party Position & Winning Margin According to Polling Stations in Palani Assembly in Assembly Election (AE) under Dindigul Parliamentary Constituency in Tamil Nadu (2021)

Polling Station Number	Winner Party	Winner Votes (%)	Runner-up Party	Runner-up Votes (%)	Winning Margin Votes (%)	Third Party	Third Party Votes (%)	Other Votes (%)
63	DMK	345 (57.98)	AIADMK	190 (31.93)	155 (26.05)	NTK	27 (4.54)	33 (5.55)
64	DMK	211 (46.17)	AIADMK	190 (41.58)	21 (4.59)	NTK	31 (6.78)	25 (5.47)
64A	DMK	224 (50.11)	AIADMK	183 (40.94)	41 (9.17)	NTK	12 (2.68)	28 (6.26)
65	DMK	152 (44.71)	AIADMK	122 (35.88)	30 (8.83)	NTK	33 (9.71)	33 (9.71)
65A	DMK	186 (54.07)	AIADMK	128 (37.21)	58 (16.86)	MNM	10 (2.91)	20 (5.81)
66	DMK	378 (57.62)	AIADMK	172 (26.22)	206 (31.4)	NTK	49 (7.47)	57 (8.69)
67	DMK	223 (58.84)	AIADMK	114 (30.08)	109 (28.76)	MNM	22 (5.8)	20 (5.28)
68	DMK	252 (55.51)	AIADMK	142 (31.28)	110 (24.23)	MNM	25 (5.51)	35 (7.71)
68A	DMK	277 (58.19)	AIADMK	148 (31.09)	129 (27.1)	MNM	28 (5.88)	23 (4.83)
69	DMK	388 (63.61)	AIADMK	143 (23.44)	245 (40.17)	MNM	36 (5.9)	43 (7.05)
70	DMK	147 (46.08)	AIADMK	123 (38.56)	24 (7.52)	NTK	23 (7.21)	26 (8.15)
71	AIADMK	189 (45.32)	DMK	184 (44.12)	5 (1.2)	NTK	19 (4.56)	25 (6)
71A	DMK	188 (45.08)	AIADMK	177 (42.45)	11 (2.63)	NTK	16 (3.84)	36 (8.63)
72	AIADMK	164 (44.81)	DMK	156 (42.62)	8 (2.19)	NTK	18 (4.92)	28 (7.65)
72A	DMK	200 (52.77)	AIADMK	150 (39.58)	50 (13.19)	MNM	19 (5.01)	10 (2.64)
73	DMK	238 (52.54)	AIADMK	178 (39.29)	60 (13.25)	NTK	10 (2.21)	27 (5.96)
74	DMK	180 (45.8)	AIADMK	170 (43.26)	10 (2.54)	NTK	17 (4.33)	26 (6.62)
74A	DMK	215 (51.81)	AIADMK	168 (40.48)	47 (11.33)	MNM	16 (3.86)	16 (3.86)
75	DMK	276 (49.2)	AIADMK	238 (42.42)	38 (6.78)	MNM	19 (3.39)	28 (4.99)
76	AIADMK	327 (48.16)	DMK	279 (41.09)	48 (7.07)	NTK	36 (5.3)	37 (5.45)
77	DMK	196 (52.55)	AIADMK	121 (32.44)	75 (20.11)	NTK	29 (7.77)	27 (7.24)
77A	DMK	171 (48.03)	AIADMK	152 (42.7)	19 (5.33)	MNM	21 (5.9)	12 (3.37)
78	DMK	265 (47.58)	AIADMK	225 (40.39)	40 (7.19)	MNM	26 (4.67)	41 (7.36)
79	DMK	460 (69.28)	AIADMK	160 (24.1)	300 (45.18)	NTK	16 (2.41)	28 (4.22)
80	DMK	237 (41.87)	AIADMK	234 (41.34)	3 (0.53)	NTK	35 (6.18)	60 (10.6)
81	DMK	461 (59.64)	AIADMK	288 (37.26)	173 (22.38)	NTK	10 (1.29)	14 (1.81)
82	DMK	194 (43.3)	AIADMK	189 (42.19)	5 (1.11)	NTK	26 (5.8)	39 (8.71)
83	DMK	336 (46.54)	AIADMK	317 (43.91)	19 (2.63)	NTK	34 (4.71)	35 (4.85)
84	DMK	219 (53.68)	AIADMK	132 (32.35)	87 (21.33)	NTK	30 (7.35)	27 (6.62)
84A	DMK	241 (53.08)	AIADMK	178 (39.21)	63 (13.87)	MNM	16 (3.52)	19 (4.19)
85	DMK	133 (74.3)	AIADMK	25 (13.97)	108 (60.33)	MNM	11 (6.15)	10 (5.59)
86	DMK	208 (48.37)	AIADMK	179 (41.63)	29 (6.74)	NTK	16 (3.72)	27 (6.28)
86A	DMK	253 (52.6)	AIADMK	179 (37.21)	74 (15.39)	MNM	19 (3.95)	30 (6.24)
87	DMK	168 (45.04)	AIADMK	134 (35.92)	34 (9.12)	NTK	31 (8.31)	40 (10.72)
87A	DMK	175 (45.81)	AIADMK	139 (36.39)	36 (9.42)	MNM	40 (10.47)	28 (7.33)
88	DMK	172 (49.14)	AIADMK	121 (34.57)	51 (14.57)	MNM	26 (7.43)	31 (8.86)
88A	DMK	177 (52.37)	AIADMK	117 (34.62)	60 (17.75)	MNM	26 (7.69)	18 (5.33)

Contd....

Socio-Economic Amenities - Rural

Access to Education Facilities

Particulars	Number of Villages (% of Population)				
	Available	Not Available	If Not Available (Distance of Nearest Facility)		
			A	B	C
Govt. Primary School	35 (99)	3 (1)	2 (0)	0 (0)	0 (0)
Private Primary School	6 (15)	32 (85)	0 (0)	0 (0)	0 (0)
Govt. Middle School	22 (83)	16 (17)	9 (7)	0 (0)	1 (1)
Private Middle School	5 (12)	33 (88)	1 (0)	2 (3)	0 (0)
Govt. Secondary School	8 (42)	30 (58)	8 (10)	3 (7)	6 (15)
Private Secondary School	5 (14)	33 (86)	2 (3)	5 (8)	1 (0)
Govt. Senior Secondary School	1 (6)	37 (94)	7 (18)	3 (4)	16 (52)
Private Senior Secondary School	2 (7)	36 (93)	1 (0)	6 (10)	2 (2)
Govt. Arts and Science Degree College	1 (10)	37 (90)	4 (18)	3 (4)	15 (41)
Private Arts and Science Degree College	0 (0)	38 (100)	3 (5)	2 (3)	10 (19)
Govt. Engineering College	0 (0)	38 (100)	1 (9)	0 (0)	5 (12)
Private Engineering College	1 (2)	37 (98)	3 (10)	13 (25)	15 (43)
Govt. Medicine College	0 (0)	38 (100)	0 (0)	1 (9)	36 (90)
Private Medicine College	0 (0)	38 (100)	0 (0)	0 (0)	1 (1)
Govt. Management Institute	1 (10)	37 (90)	2 (15)	6 (16)	10 (16)
Private Management Institute	1 (2)	37 (98)	1 (1)	4 (4)	13 (36)
Govt. Polytechnic	0 (0)	38 (100)	3 (9)	4 (12)	14 (30)
Private Polytechnic	0 (0)	38 (100)	1 (1)	1 (10)	15 (38)
Govt. Vocational Training School/ITI	0 (0)	38 (100)	0 (0)	3 (4)	12 (30)
Private Vocational Training School/ITI	1 (6)	37 (94)	1 (1)	2 (19)	19 (39)
Govt. Non Formal Training Centre	6 (21)	32 (79)	0 (0)	3 (12)	19 (41)
Private Non Formal Training Centre	5 (15)	33 (85)	1 (6)	1 (9)	8 (11)
Govt. School For Disabled	0 (0)	38 (100)	0 (0)	4 (22)	18 (41)
Private School For Disabled	1 (4)	37 (96)	3 (10)	1 (1)	11 (22)
Government Others	0 (0)	38 (100)	0 (0)	0 (0)	0 (0)
Private Others	0 (0)	38 (100)	0 (0)	0 (0)	0 (0)

Note : Distance A : Less than 5 km; B : Between 5-10 km; C : 10+ km.; Source : Data Analysis is based on 2011 Census.

DISCLAIMER

The Terms of Use and Disclaimer of Datanet India Private Limited (hereinafter referred to as "Datanet") for use of this analysis report of **Palani Assembly Constituency (Palani Vidhan Sabha) :-**

1. **Assembly Factbook™** is a Registered Trade Mark owned by Datanet.
2. All the maps are sketched and graphical representation only and have not been drawn to the scale and also not to represent the actual geographical area or boundary of the unit.
3. The data for the aforesaid analysis is based on authentic sources and has been culled from the various publications of Census, CSO and NSSO for district and block level data, various central and state government departments, Central & State Elections Commissions and the concerned Returning Officers' releases, Electoral Rolls, Election results and allied publications, internal assessment, surveys, estimates and analysis. Therefore, certain adjustment of data at micro level may have been done to arrive closer to the macro data.
4. Data have been provided on an "As Is" and "As AVAILABLE" basis
5. The colours shown in the maps or diagram and charts of a particular party, alliance or AC are indicative and do not represent them.
6. This publication which includes maps, sheets, graphs and data would be the property under copyright of Datanet only. The user may use these for its internal study, analysis and research purposes. It's public display, re-selling or any commercial uses by the user are not allowed.
7. Datanet has taken due care and caution in compilation and processing of data and allied information, but does not guarantee the accuracy, adequacy or completeness of any information/analysis and will be not responsible for any errors or omissions or for the results obtained from the use of such information/analysis.
8. All the contents for the publication have been culled from various authentic sources and Datanet reasonably believes such sources to be reliable, but does not make any representations, express or implied as to the accuracy or fitness of use of such information. The information or contents of the information/analysis do not constitute advice and should not be relied upon in making (or refraining from making) any decision. Any reliance placed upon the information provided by Datanet is the sole responsibility and strictly at the user's risk.
9. In no event will Datanet be liable for any damages (including, without limitation, damages for loss of business projects, or loss of profits) arising in contract, tort or otherwise from the use of or inability to use any of its contents, or from any action taken (or refrained from being taken) as a result of using the analysis or any of its contents. Datanet its directors, owners, editors, officials, employees, distributor and agents or any associate will not be liable for any errors in the information contained or any consequences arising from the use of the contents of the provided information/analysis.
10. If any provision of these terms and conditions is held invalid or illegal or unenforceable for any reason by any court of competent jurisdiction, such provision shall be severed and the remainder of provisions of the terms and conditions shall continue in full force and effect as if the Term of Use had been executed with the invalid, illegal or unenforceable provision eliminated.
11. If there are any discrepancies in the information provided, please bring it to attention of Datanet for suitable rectification measures.

Buy Online This Complete Book At
Datanet India eBooks Store

www.indiastatpublications.com

or go directly at

[http://www.indiastatpublications.com/
Assembly_factbook/Tamil_Nadu/Dindigul/Palani](http://www.indiastatpublications.com/Assembly_factbook/Tamil_Nadu/Dindigul/Palani)

 **india**stat**elections**

