



Tamil Nadu

Assembly Factbook™

Thiruporur Assembly Constituency



Key Electoral Data of Thiruporur
Assembly Constituency (Vidhan Sabha)

Tamil Nadu

Assembly Factbook™

Thiruporur Assembly Constituency



Thiruporur Vidhan Sabha

Editor & Director

Dr. R.K. Thukral

Research Editor

Dr. Shafeeq Rahman

Compiled, Researched and Published by Datanet India Pvt. Ltd.

D-100, 1st Floor,

Okhla Industrial Area, Phase-I,
New Delhi- 110020.

Ph.: 91-11- 43580781-84

Email : support@indiastatpublications.com

Website : www.indiastatelections.com

Online Book Store :

www.indiastatpublications.com

Report No. : AFB/TN-033-0125

ISBN : 978-93-5313-871-4

First Edition : January, 2018

Eighth Updated Edition : January, 2025

Price : Rs. 11500/-

US\$ 310

© Datanet India Pvt. Ltd.

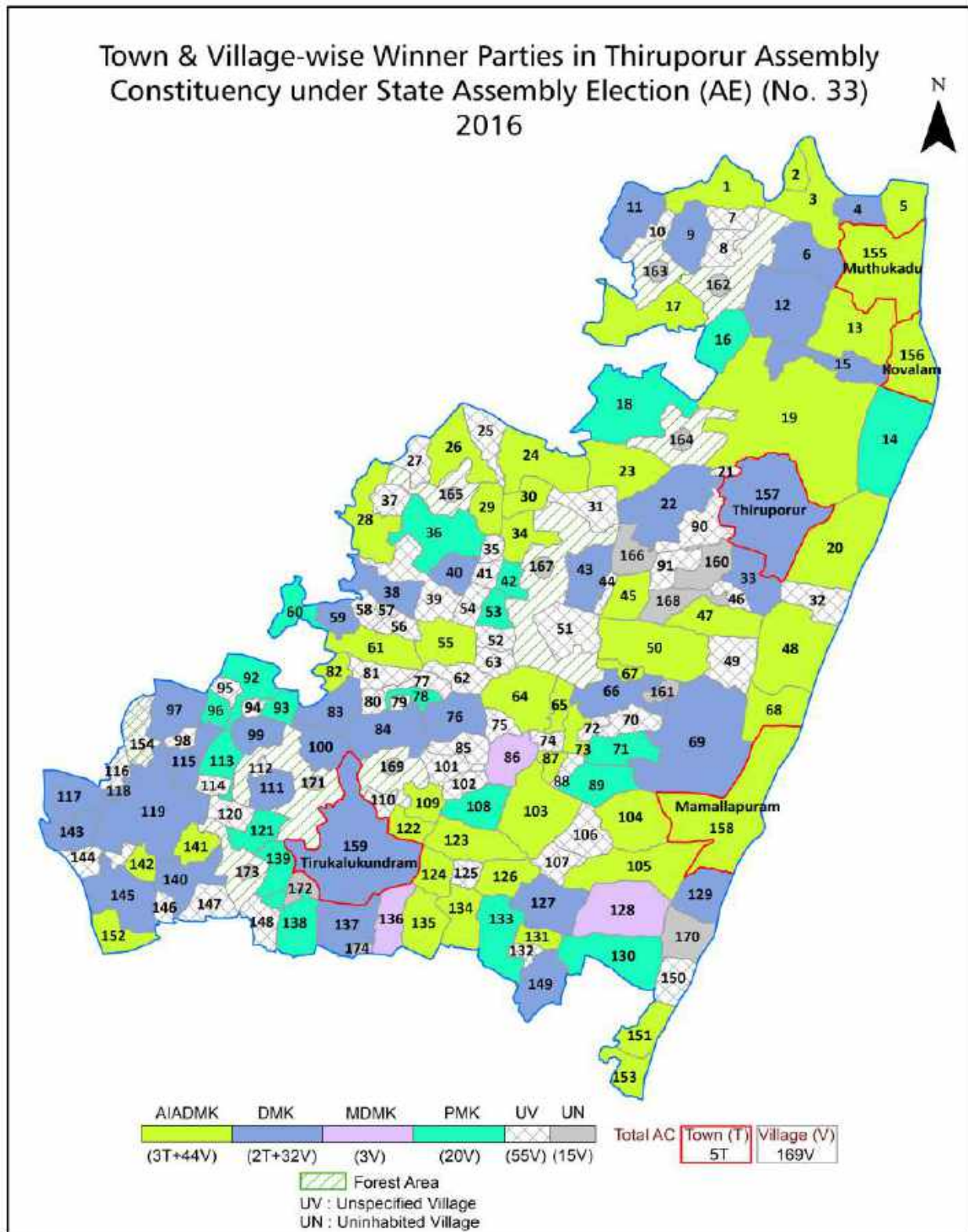
All rights reserved. No part of this book may be reproduced, stored in a retrieval system or transmitted in any form or by any means, mechanical photocopying, photographing, scanning, recording or otherwise without the prior written permission of the publisher. Please refer to Disclaimer at page no. 255 for the use of this publication.

Printed in India

Contents

No.	Particulars	Page No.
	Introduction	
1	Assembly Constituency - (Vidhan Sabha) at a Glance Features of Assembly as per Delimitation Commission of India (2008)	1-2
	Location and Political Maps	
2	Location Map Boundaries of Assembly Constituency - (Vidhan Sabha in District Boundaries of Assembly Constituency under Parliamentary Constituency - (Lok Sabha) Town & Village-wise Winner Parties- 2024, 2021, 2019, 2016, 2014, 2011 and 2009	3-11
	Administrative Setup (2011)	
3	District Sub-district Towns Villages Inhabited Villages Uninhabited Villages Village Panchayat Intermediate Panchayat	12-20
	Demographics (2011)	
4	Population Households Rural/Urban Population Towns and Villages by Population Size Sex Ratio (Total & 0-6 Years) Religious Population Social Population Literacy Rate	21-22
	Electoral Features	
5	Important Dates of Last Elections Held Electors by Gender Service Electors Voters Voters Turnout Polling Stations & Average Number of Electors per Polling Station Electors by Age Group Present Elected Representatives	23-28
	Historical Summary Election Results	
6	Vote Share of Major Parties Winning Margin (Number & Percentage Polarity of Parties Summary Result of Assembly Segment of Parliamentary Elections 2024, 2019, 2014, 2009, 2004 and 1999 Summary Result of Assembly Elections 2021, 2016, 2011, 2006, 2001, 1996, 1991, 1989, 1984, 1980, 1977, 1971 and 1967	29-51
	Polling Station Level Election Results	
7	Name and Number of Polling Station 2024, 2021, 2019, 2016, 2014, 2011 and 2009 Polling Station-wise Electors, Voters & Voters Turnout 2024, 2021, 2019, 2016, 2014, 2011 and 2009 Polling Station wise Elections Results 2024, 2021, 2019, 2016, 2014, 2011 and 2009	52-234
	Share of Assembly Constituency	
8	Share of Assembly Constituency - (Vidhan Sabha) in State, District and Parliamentary Constituency - (Lok Sabha)	235
	Socio-Economic Amenities (2011)	
9	Access to Administrative Units Agricultural, Manufacturing and Industrial Commodities Demographic Indicators Education Health & Manpower Drinking Water Supply Sanitation Entertainment and Recreations Infrastructure Power Food Allocation Distribution and Marketing of Agriculture Commodities Infrastructure Transport and Road Infrastructure Communication Banking and Financial Services Land Use Irrigation Source	236-251
10	Abbreviation & Sources	252-254
11	Disclaimer	255

Location & Political Map



Administrative Setup

List of Village Panchayat & Intermediate Panchayat (Block) Name - 2011

Village Name	Village Panchayat Name	Intermediate Panchayat Name
Acharavakkam	Sembakkam	Thiruporur
Acharavakkam	Pattikadu	Tirukalukundram
Adavilagam	Sogandy	Tirukalukundram
Agaram	Nellikuppam	Thiruporur
Agaram	Manamathy	Thiruporur
Alagusamudram	Alagusamudram	Tirukalukundram
Alathur	Alathur	Thiruporur
Amaipakkam	Neikuppi	Tirukalukundram
Amaiypattu	Manamathy	Thiruporur
Amirthampallam	Periyairumbedu	Thiruporur
Ammanambakkam	Ammanambakkam	Tirukalukundram
Amoor	Amoor	Thiruporur
Anoor	Anoor	Tirukalukundram
Arungundram	Arungundram	Thiruporur
Chettipatturayamankuppam	Sembakkam	Thiruporur
Chinna Irumbedu	Periyairumbedu	Thiruporur
Chinnavippedu	Periyavippedu	Thiruporur
Dasarikuppam	Hanumanthapuram	Thiruporur
Dhakshnavarthy	Manamathy	Thiruporur
Echankaranai	Echankaranai	Tirukalukundram
Echur	Echur	Tirukalukundram
Edaiyur	Ponpathirkoodam	Tirukalukundram
Edarkundram	Mailai	Thiruporur
Edayankuppam RF	-	-
Egai	Mullakolathur	Tirukalukundram
Elumichampattu	Anoor	Tirukalukundram
Hanumanthapuram	Hanumanthapuram	Thiruporur
Illalur	Illalur	Thiruporur
Illalur RF	-	-

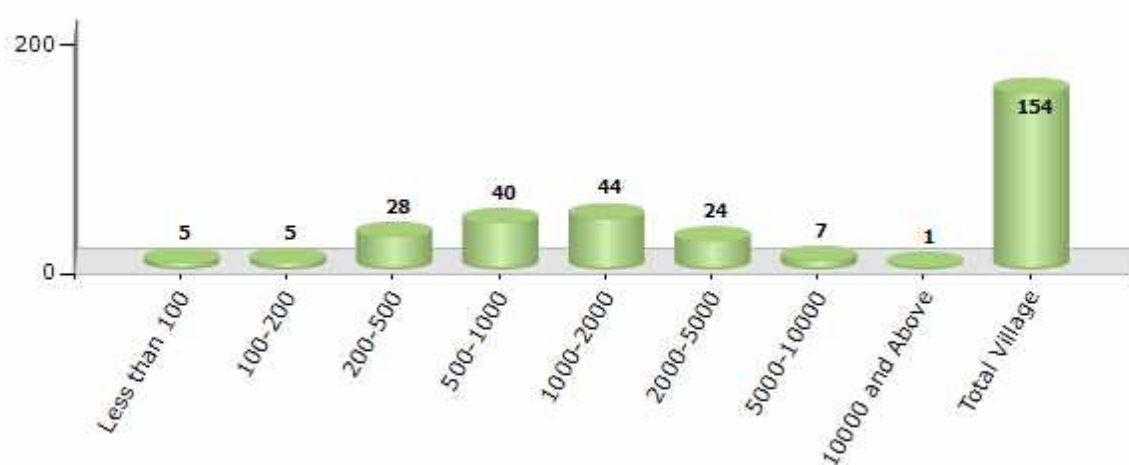
Contd....

Demographics

Number of Villages by Population Size - 2011

Less than 100	100-200	200-500	500-1000	1000-2000	2000-5000	5000-10000	10000 and Above	Total Village
5	5	28	40	44	24	7	1	154

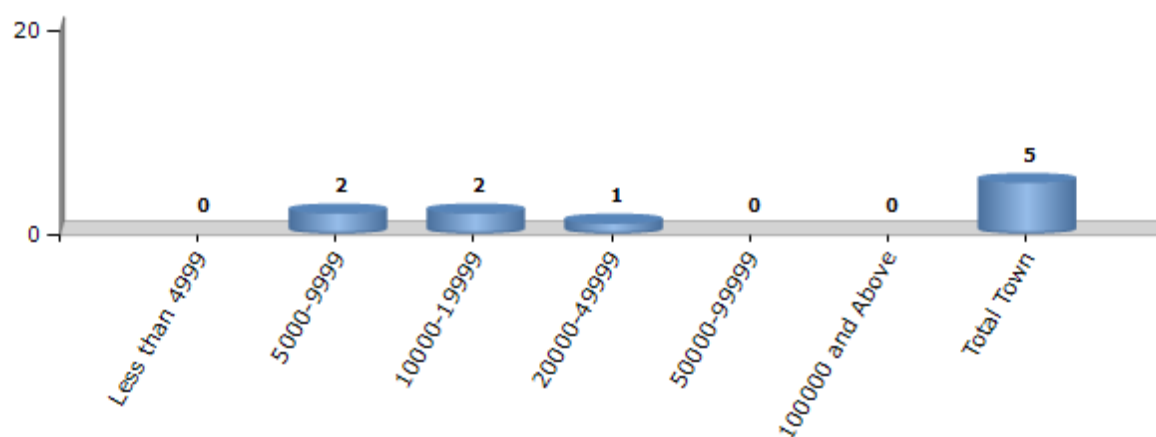
Number of Villages by Population Size - 2011



Number of Towns by Population Size - 2011

Less than 4999	5000-9999	10000-19999	20000-49999	50000-99999	100000 and Above	Total Town
0	2	2	1	0	0	5

Number of Towns by Population Size - 2011



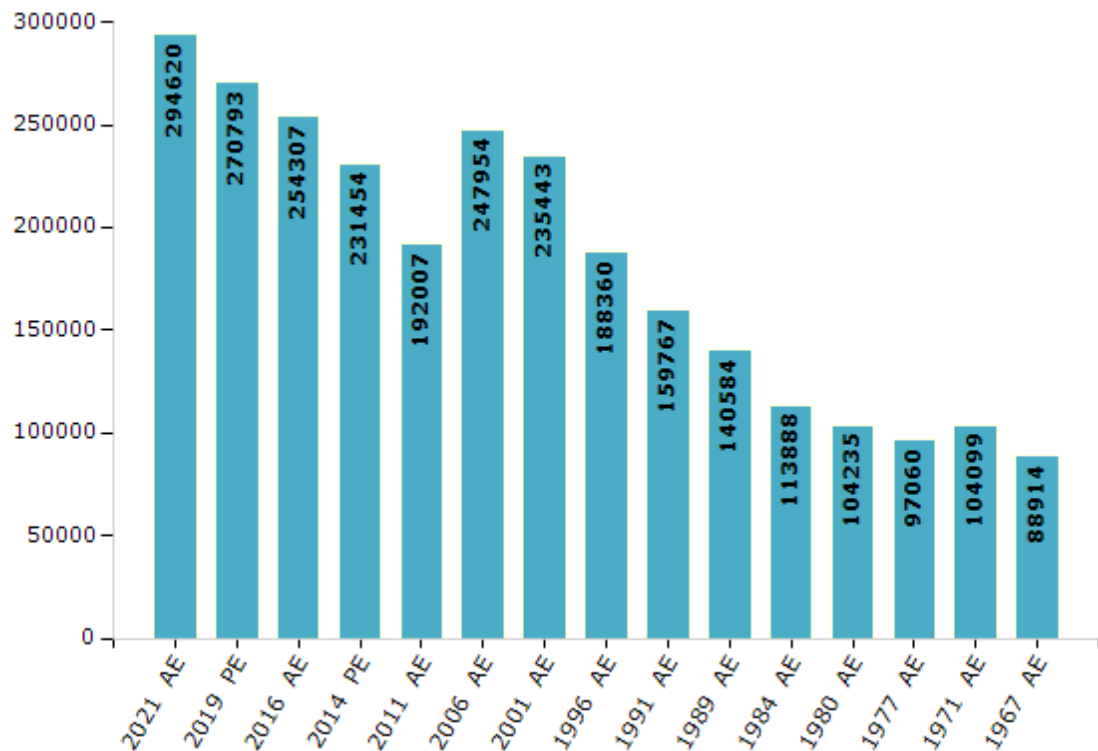
Electoral Features

Electors by Male & Female

Year	Male	Female	Others	Total
2021 AE	144217	150365	38	294620
2019 PE	133335	137434	24	270793
2016 AE	125753	128536	18	254307
2014 PE	116369	115071	14	231454
2011 AE	97355	94645	7	192007
2009 PE	-	-	-	-
2006 AE	122385	125569	-	247954
2004 PE	-	-	-	-
2001 AE	118609	116834	-	235443

Year	Male	Female	Others	Total
1999 PE	-	-	-	-
1996 AE	95558	92802	-	188360
1991 AE	81644	78123	-	159767
1989 AE	71652	68932	-	140584
1984 AE	57627	56261	-	113888
1980 AE	53110	51125	-	104235
1977 AE	49693	47367	-	97060
1971 AE	53237	50862	-	104099
1967 AE	-	-	-	88914

Number of Electors

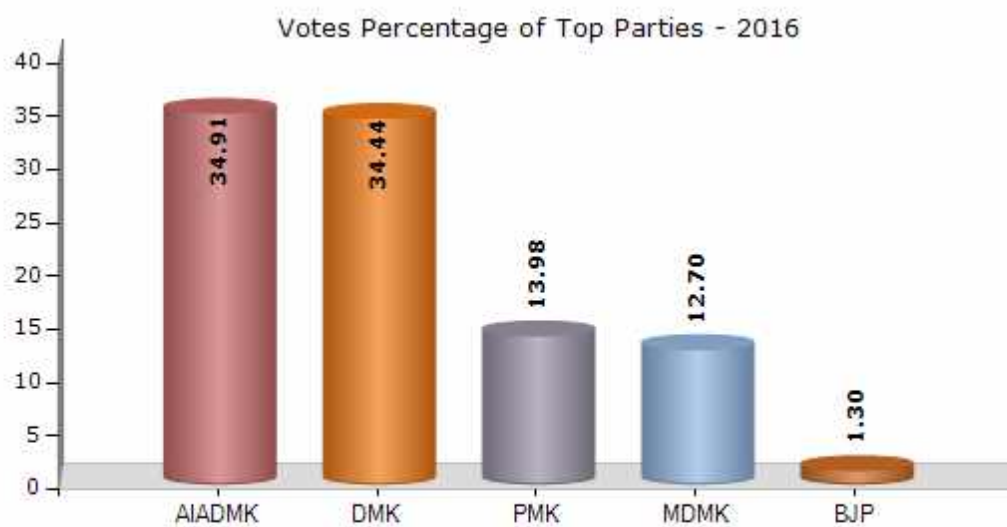


Note : AE : Assembly Election, PE : Assembly Segment of Parliamentary Election

Historical Summary Election Results

Summary Result of Assembly Election - 2016

Candidate Name	Party	Votes	Votes %
Kothandapani. M	AIADMK	70215	34.91
Viswanathan. V	DMK	69265	34.44
Vasu. K	PMK	28125	13.98
Sathya. C.E	MDMK	25539	12.7
Rangaswamy.V.G	BJP	2605	1.3
Ellalan Yusuf.I	NTK	1836	0.91
Kumar.V	SHS	363	0.18
Victor John. J	BSP	295	0.15
Parventhan.N	IND	224	0.11
Sekar. M	IND	219	0.11
Suresh. B	IND	181	0.09
Pakkiriambekar. K.V	IND	158	0.08
	NOTA	2116	1.05



Polling Station Level Election Results

Number and Name of Polling Stations (PS) (2021)

Number of Polling Stations	Name of Polling Stations	Number of Polling Stations	Name of Polling Stations
1	Adthithiravidar Middle schoolMelakottaiyur Old Building East facing South wing IV std	13	Advent Christain Primary SchoolNavalur, North facing West Wing V std
1A	Adthithiravidar Middle schoolMelakottaiyur Old Building East facing South wing IV std	14	Advent Christain Primary SchoolNavalur,south facing East Building
2	Adthithiravidar Middle schoolMelakottaiyur Old Building East facing north wing III Std	14A	Advent Christain Primary SchoolNavalur,south facing East Building
3	Adthithiravidar Middle schoolMelakottaiyur Old Building East facing north wing VI Std	15	Advent Christain Primary SchoolNavalur, south facing west Building Iind Std
3A	Adthithiravidar Middle schoolMelakottaiyur Old Building East facing north wing VI Std	15A	Advent Christain Primary SchoolNavalur, south facing west Building Iind Std
4	Adthithiravidar Middle schoolMelakottaiyur Old Building East facing South Wing VI Std	16	Advent Christain Primary SchoolKaranai, East facing North wing V Std
4A	Adthithiravidar Middle schoolMelakottaiyur Old Building East facing South Wing VI Std	16A	Advent Christain Primary SchoolKaranai, East facing North wing V Std
5	Adthithiravidar Middle SchoolMelakottaiyur New Building East facing North Wing VI Std	17	Advent Christain Primary SchoolKaranai, west facing south wing I -IV std
6	Adthithiravidar Middle SchoolMelakottaiyur New Building East facing North Wing II Std	17A	Advent Christain Primary SchoolKaranai, west facing south wing I -IV std
6A	Adthithiravidar Middle SchoolMelakottaiyur New Building East facing North Wing II Std	18	Panchayat Union Middle school South face West Side II std
7	American Advant Mission Middle schoolPonmar South facing East Wing	18A	Panchayat Union Middle school South face West Side II std
7A	American Advant Mission Middle schoolPonmar South facing East Wing	19	Panchayat Union Middle school, Navalur, South face East wing
8	American Advant Mission Middle schoolPonmar South facing East Wing II nd Room	19A	Panchayat Union Middle school, Navalur, South face East wing
8A	American Advant Mission Middle schoolPonmar South facing East Wing II nd Room	20	Panchayat Union Middle school Navalur Norht face West side III std
9	American Advant Mission Middle schoolPonmar South facing, West Wing III Room	20A	Panchayat Union Middle school Navalur Norht face West side III std
10	Panchayat Union Primary School Polacheri, North facing	21	Panchayat Union Middle schoolNavalur East facing West Side IV std
10A	Panchayat Union Primary School Polacheri, North facing	21A	Panchayat Union Middle schoolNavalur East facing West Side IV std
11	Advent Christain Primary SchoolNavalur North facing East Wing I toIII std	22	Panchayat Union Primary school South face East Building Siruseri
11A	Advent Christain Primary SchoolNavalur North facing East Wing I toIII std	22A	Panchayat Union Primary school South face East Building Siruseri
12	Advent Christain Primary SchoolNavalur, north facing West Wing IV Std	23	Panchayat Union Primary school South face East Building Siruseri
12A	Advent Christain Primary SchoolNavalur, north facing West Wing IV Std	24	Panchayat Union Middle SchoolKanthur Colony North Facing East Building I std

Contd....

Polling Station Level Election Results

Polling Station-wise Votes Secured by Overall Top Five Parties in Thiruporur Assembly in Assembly Election (AE) under Kancheepuram Parliamentary Constituency in Tamil Nadu (2021)

Number of Polling Station	Winner - S.S.Balaji (VCK)	Runner-up - Arumugam.K (PMK)	3rd - Mohana Sundari.S (NTK)	4th - Lavanya.N (MNM)	5th - Kothandapani. M (AMMKMNKZ)	NOTA	Other	Total Votes Secured
20A	188	83	36	30	14	2	4	357
21	170	100	52	49	13	9	1	394
21A	132	87	27	34	8	4	6	298
22	165	124	38	42	7	5	1	382
22A	185	114	28	41	7	1	4	380
23	367	273	78	47	12	4	6	787
24	241	76	52	19	10	7	15	420
24A	273	71	30	16	9	2	10	411
25	312	71	53	15	8	8	3	470
25A	314	63	39	20	2	5	5	448
26	299	66	52	13	11	3	5	449
26A	306	48	31	19	6	1	2	413
27	178	118	105	15	12	4	3	435
27A	194	99	67	22	8	4	11	405
28	205	124	109	22	14	2	1	477
28A	192	125	81	29	9	3	5	444
29	309	159	117	18	14	5	7	629
30	315	200	92	28	24	5	5	669
31	199	307	170	24	30	1	5	736
32	293	103	87	37	17	4	3	544
32A	291	84	35	38	6	2	4	460
33	145	144	41	85	7	7	7	436
33A	159	142	27	79	6	3	8	424
34	111	100	48	70	6	3	5	343
34A	118	112	36	59	13	3	6	347
35	160	100	69	45	24	2	3	403
35A	201	102	37	37	28	3	2	410
36	178	84	80	21	27	2	1	393
36A	175	96	60	24	27	1	4	387
37	197	227	74	48	8	12	2	568
37A	166	203	44	65	13	5	13	509
38	270	110	66	30	32	4	6	518
39	187	88	63	19	20	4	4	385
39A	196	69	45	20	19	4	5	358
40	395	306	76	22	14	8	16	837

Contd....

Polling Station Level Election Results

Winner, Runner-up and 3rd Party Position & Winning Margin According to Polling Stations in Thiruporur Assembly in Assembly Election (AE) under Kancheepuram Parliamentary Constituency in Tamil Nadu (2021)

Polling Station Number	Winner Party	Winner Votes (%)	Runner-up Party	Runner-up Votes (%)	Winning Margin Votes (%)	Third Party	Third Party Votes (%)	Other Votes (%)
44	VCK	220 (42.39)	PMK	199 (38.34)	21 (4.05)	NTK	68 (13.1)	32 (6.17)
45	VCK	191 (42.54)	PMK	123 (27.39)	68 (15.15)	NTK	64 (14.25)	71 (15.81)
45A	VCK	227 (48.82)	PMK	121 (26.02)	106 (22.8)	NTK	51 (10.97)	66 (14.19)
46	VCK	187 (47.7)	PMK	90 (22.96)	97 (24.74)	NTK	58 (14.8)	57 (14.54)
46A	VCK	218 (52.78)	PMK	98 (23.73)	120 (29.05)	NTK	31 (7.51)	66 (15.98)
47	VCK	183 (37.2)	PMK	161 (32.72)	22 (4.48)	NTK	58 (11.79)	90 (18.29)
47A	VCK	168 (40.58)	PMK	127 (30.68)	41 (9.9)	MNM	46 (11.11)	73 (17.63)
48	VCK	198 (45.21)	PMK	114 (26.03)	84 (19.18)	NTK	63 (14.38)	63 (14.38)
48A	VCK	249 (56.08)	PMK	109 (24.55)	140 (31.53)	AMMKMNKZ	32 (7.21)	54 (12.16)
49	VCK	315 (50.16)	PMK	112 (17.83)	203 (32.33)	NTK	92 (14.65)	109 (17.36)
50	VCK	163 (37.64)	PMK	102 (23.56)	61 (14.08)	NTK	78 (18.01)	90 (20.79)
50A	VCK	133 (36.94)	PMK	96 (26.67)	37 (10.27)	MNM	58 (16.11)	73 (20.28)
51	VCK	189 (47.97)	PMK	78 (19.8)	111 (28.17)	NTK	76 (19.29)	51 (12.94)
51A	VCK	189 (49.87)	PMK	86 (22.69)	103 (27.18)	NTK	54 (14.25)	50 (13.19)
52	VCK	146 (41.71)	PMK	86 (24.57)	60 (17.14)	NTK	53 (15.14)	65 (18.57)
52A	VCK	151 (45.35)	PMK	75 (22.52)	76 (22.83)	MNM	51 (15.32)	56 (16.82)
53	VCK	130 (34.57)	PMK	111 (29.52)	19 (5.05)	MNM	62 (16.49)	73 (19.41)
53A	VCK	120 (35.19)	PMK	102 (29.91)	18 (5.28)	MNM	59 (17.3)	60 (17.6)
54	VCK	230 (49.36)	NTK	102 (21.89)	128 (27.47)	PMK	81 (17.38)	53 (11.37)
54A	VCK	236 (54.63)	PMK	89 (20.6)	147 (34.03)	NTK	54 (12.5)	53 (12.27)
55	VCK	312 (65.41)	PMK	96 (20.13)	216 (45.28)	NTK	46 (9.64)	23 (4.82)
56	VCK	472 (72.39)	PMK	97 (14.88)	375 (57.51)	NTK	51 (7.82)	32 (4.91)
57	PMK	210 (40.08)	VCK	204 (38.93)	6 (1.15)	NTK	55 (10.5)	55 (10.5)
58	VCK	210 (55.41)	PMK	76 (20.05)	134 (35.36)	NTK	60 (15.83)	33 (8.71)
58A	VCK	210 (45.16)	PMK	99 (21.29)	111 (23.87)	NTK	74 (15.91)	82 (17.63)
59	VCK	286 (35.48)	PMK	281 (34.86)	5 (0.62)	NTK	173 (21.46)	66 (8.19)
60	VCK	295 (55.87)	PMK	118 (22.35)	177 (33.52)	NTK	81 (15.34)	34 (6.44)
61	VCK	374 (54.52)	PMK	139 (20.26)	235 (34.26)	NTK	113 (16.47)	60 (8.75)
62	VCK	256 (43.91)	PMK	190 (32.59)	66 (11.32)	NTK	87 (14.92)	50 (8.58)
63	PMK	298 (48.61)	VCK	134 (21.86)	164 (26.75)	NTK	124 (20.23)	57 (9.3)
64	PMK	418 (70.85)	VCK	116 (19.66)	302 (51.19)	NTK	22 (3.73)	34 (5.76)
65	PMK	559 (68.09)	VCK	177 (21.56)	382 (46.53)	NTK	44 (5.36)	41 (4.99)
66	VCK	265 (52.48)	PMK	146 (28.91)	119 (23.57)	NTK	72 (14.26)	22 (4.36)
66A	VCK	326 (57.7)	PMK	160 (28.32)	166 (29.38)	NTK	50 (8.85)	29 (5.13)
67	VCK	258 (41.61)	PMK	162 (26.13)	96 (15.48)	NTK	85 (13.71)	115 (18.55)
68	VCK	248 (45.59)	PMK	118 (21.69)	130 (23.9)	NTK	100 (18.38)	78 (14.34)
69	VCK	227 (57.04)	PMK	77 (19.35)	150 (37.69)	NTK	61 (15.33)	33 (8.29)

Contd....

Socio-Economic Amenities - Rural

Access to Education Facilities

Particulars	Number of Villages (% of Population)				
	Available	Not Available	If Not Available (Distance of Nearest Facility)		
			A	B	C
Govt. Primary School	109 (92)	45 (8)	42 (7)	1 (1)	0 (0)
Private Primary School	25 (38)	129 (62)	1 (0)	0 (0)	0 (0)
Govt. Middle School	60 (69)	94 (31)	80 (24)	6 (2)	0 (0)
Private Middle School	11 (19)	143 (81)	6 (3)	0 (0)	0 (0)
Govt. Secondary School	21 (32)	133 (68)	93 (42)	27 (13)	1 (1)
Private Secondary School	9 (12)	145 (88)	6 (4)	0 (0)	0 (0)
Govt. Senior Secondary School	11 (17)	143 (83)	83 (51)	51 (28)	4 (3)
Private Senior Secondary School	2 (3)	152 (97)	3 (1)	1 (0)	0 (0)
Govt. Arts and Science Degree College	0 (0)	154 (100)	1 (1)	17 (8)	24 (12)
Private Arts and Science Degree College	2 (4)	152 (96)	23 (20)	49 (32)	38 (23)
Govt. Engineering College	0 (0)	154 (100)	0 (0)	0 (0)	0 (0)
Private Engineering College	9 (16)	145 (84)	52 (28)	59 (37)	34 (20)
Govt. Medicine College	0 (0)	154 (100)	1 (1)	24 (11)	75 (39)
Private Medicine College	2 (3)	152 (97)	13 (15)	16 (18)	23 (13)
Govt. Management Institute	0 (0)	154 (100)	0 (0)	1 (1)	1 (0)
Private Management Institute	6 (14)	148 (86)	35 (21)	52 (34)	59 (30)
Govt. Polytechnic	1 (0)	153 (100)	8 (5)	9 (4)	5 (2)
Private Polytechnic	4 (9)	150 (91)	16 (14)	72 (39)	39 (27)
Govt. Vocational Training School/ITI	0 (0)	154 (100)	3 (2)	21 (10)	77 (38)
Private Vocational Training School/ITI	2 (3)	152 (97)	5 (12)	16 (14)	30 (21)
Govt. Non Formal Training Centre	112 (92)	42 (8)	39 (8)	3 (0)	0 (0)
Private Non Formal Training Centre	0 (0)	154 (100)	0 (0)	0 (0)	0 (0)
Govt. School For Disabled	0 (0)	154 (100)	13 (11)	15 (13)	15 (15)
Private School For Disabled	2 (7)	152 (93)	3 (2)	39 (21)	67 (31)
Government Others	0 (0)	154 (100)	0 (0)	0 (0)	0 (0)
Private Others	0 (0)	154 (100)	0 (0)	0 (0)	0 (0)

Note : Distance A : Less than 5 km; B : Between 5-10 km; C : 10+ km.; Source : Data Analysis is based on 2011 Census.

DISCLAIMER

The Terms of Use and Disclaimer of Datanet India Private Limited (hereinafter referred to as "Datanet") for use of this analysis report of **Thiruporur Assembly Constituency (Thiruporur Vidhan Sabha)** :-

1. **Assembly Factbook™** is a Registered Trade Mark owned by Datanet.
2. All the maps are sketched and graphical representation only and have not been drawn to the scale and also not to represent the actual geographical area or boundary of the unit.
3. The data for the aforesaid analysis is based on authentic sources and has been culled from the various publications of Census, CSO and NSSO for district and block level data, various central and state government departments, Central & State Elections Commissions and the concerned Returning Officers' releases, Electoral Rolls, Election results and allied publications, internal assessment, surveys, estimates and analysis. Therefore, certain adjustment of data at micro level may have been done to arrive closer to the macro data.
4. Data have been provided on an "As Is" and "As AVAILABLE" basis
5. The colours shown in the maps or diagram and charts of a particular party, alliance or AC are indicative and do not represent them.
6. This publication which includes maps, sheets, graphs and data would be the property under copyright of Datanet only. The user may use these for its internal study, analysis and research purposes. It's public display, re-selling or any commercial uses by the user are not allowed.
7. Datanet has taken due care and caution in compilation and processing of data and allied information, but does not guarantee the accuracy, adequacy or completeness of any information/analysis and will be not responsible for any errors or omissions or for the results obtained from the use of such information/analysis.
8. All the contents for the publication have been culled from various authentic sources and Datanet reasonably believes such sources to be reliable, but does not make any representations, express or implied as to the accuracy or fitness of use of such information. The information or contents of the information/analysis do not constitute advice and should not be relied upon in making (or refraining from making) any decision. Any reliance placed upon the information provided by Datanet is the sole responsibility and strictly at the user's risk.
9. In no event will Datanet be liable for any damages (including, without limitation, damages for loss of business projects, or loss of profits) arising in contract, tort or otherwise from the use of or inability to use any of its contents, or from any action taken (or refrained from being taken) as a result of using the analysis or any of its contents. Datanet its directors, owners, editors, officials, employees, distributor and agents or any associate will not be liable for any errors in the information contained or any consequences arising from the use of the contents of the provided information/analysis.
10. If any provision of these terms and conditions is held invalid or illegal or unenforceable for any reason by any court of competent jurisdiction, such provision shall be severed and the remainder of provisions of the terms and conditions shall continue in full force and effect as if the Term of Use had been executed with the invalid, illegal or unenforceable provision eliminated.
11. If there are any discrepancies in the information provided, please bring it to attention of Datanet for suitable rectification measures.

Buy Online This Complete Book At
Datanet India eBooks Store

www.indiastatpublications.com

or go directly at

[http://www.indiastatpublications.com/
Assembly_factbook/Tamil_Nadu/Kancheepuram/Thiruporur](http://www.indiastatpublications.com/Assembly_factbook/Tamil_Nadu/Kancheepuram/Thiruporur)

 **india**stat**elections**

