



Tamil Nadu

Assembly Factbook™

Kanniyakumari Assembly Constituency



Key Electoral Data of Kanniyakumari
Assembly Constituency (Vidhan Sabha)

Tamil Nadu

Assembly Factbook™

Kanniyakumari Assembly Constituency



Kanniyakumari Vidhan Sabha

Editor & Director

Dr. R.K. Thukral

Research Editor

Dr. Shafeeq Rahman

Compiled, Researched and Published by Datanet India Pvt. Ltd.

D-100, 1st Floor,

Okhla Industrial Area, Phase-I,
New Delhi- 110020.

Ph.: 91-11- 43580781-84

Email : support@indiastatpublications.com

Website : www.indiastatelections.com

Online Book Store :

www.indiastatpublications.com

Report No. : AFB/TN-229-0125

ISBN : 978-93-5313-652-9

First Edition : January, 2018

Eighth Updated Edition : January, 2025

Price : Rs. 11500/-

US\$ 310

© **Datanet India Pvt. Ltd.**

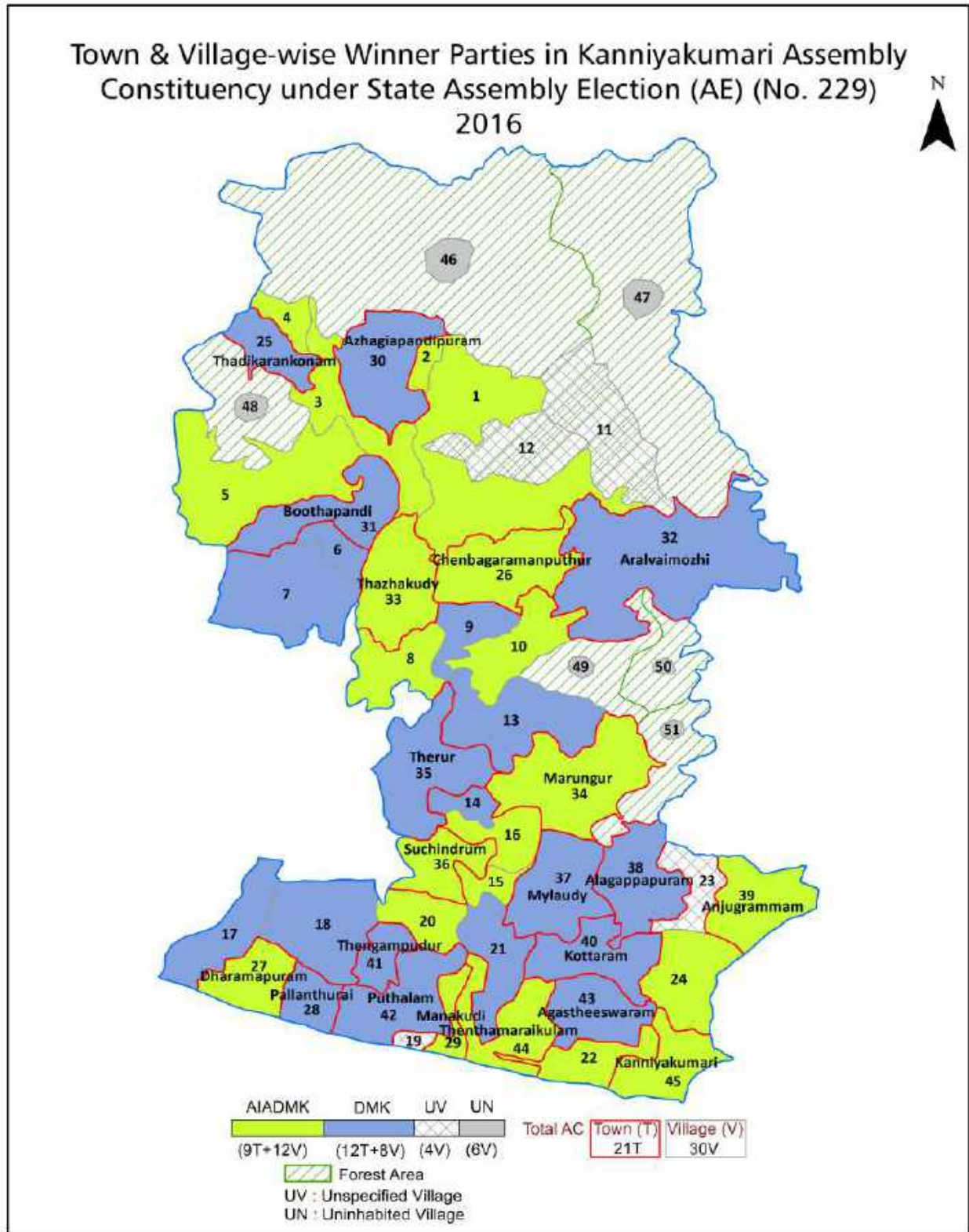
All rights reserved. No part of this book may be reproduced, stored in a retrieval system or transmitted in any form or by any means, mechanical photocopying, photographing, scanning, recording or otherwise without the prior written permission of the publisher. Please refer to Disclaimer at page no. 258 for the use of this publication.

Printed in India

Contents

No.	Particulars	Page No.
	Introduction	
1	Assembly Constituency - (Vidhan Sabha) at a Glance Features of Assembly as per Delimitation Commission of India (2008)	1-2
	Location and Political Maps	
2	Location Map Boundaries of Assembly Constituency - (Vidhan Sabha) in District Boundaries of Assembly Constituency under Parliamentary Constituency - (Lok Sabha) Town & Village-wise Winner Parties- 2024, 2021, 2019, 2016, 2014, 2011 and 2009	3-11
	Administrative Setup (2011)	
3	District Sub-district Towns Villages Inhabited Villages Uninhabited Villages Village Panchayat Intermediate Panchayat	12-14
	Demographics (2011)	
4	Population Households Rural/Urban Population Towns and Villages by Population Size Sex Ratio (Total & 0-6 Years) Religious Population Social Population Literacy Rate	15-16
	Electoral Features	
5	Important Dates of Last Elections Held Electors by Gender Service Electors Voters Voters Turnout Polling Stations & Average Number of Electors per Polling Station Electors by Age Group Present Elected Representatives	17-22
	Historical Summary Election Results	
6	Vote Share of Major Parties Winning Margin (Number & Percentage) Polarity of Parties Summary Result of Assembly Segment of Parliamentary Elections 2024, 2019, 2014, 2009, 2004 and 1999 Summary Result of Assembly Elections 2021, 2016, 2011, 2006, 2001, 1996, 1991, 1989, 1984, 1980, 1977, 1971 and 1967	23-44
	Polling Station Level Election Results	
7	Name and Number of Polling Station 2024, 2021, 2019, 2016, 2014, 2011 and 2009 Polling Station-wise Electors, Voters & Voters Turnout 2024, 2021, 2019, 2016, 2014, 2011 and 2009 Polling Station wise Elections Results 2024, 2021, 2019, 2016, 2014, 2011 and 2009	45-237
	Share of Assembly Constituency	
8	Share of Assembly Constituency - (Vidhan Sabha) in State, District and Parliamentary Constituency - (Lok Sabha)	238
	Socio-Economic Amenities (2011)	
9	Access to Administrative Units Agricultural, Manufacturing and Industrial Commodities Demographic Indicators Education Health & Manpower Drinking Water Supply Sanitation Entertainment and Recreations Infrastructure Power Food Allocation Distribution and Marketing of Agriculture Commodities Infrastructure Transport and Road Infrastructure Communication Banking and Financial Services Land Use Irrigation Source	239-254
10	Abbreviation & Sources	255-257
11	Disclaimer	258

Location & Political Map



Administrative Setup

List of Village Panchayat & Intermediate Panchayat (Block) Name - 2011

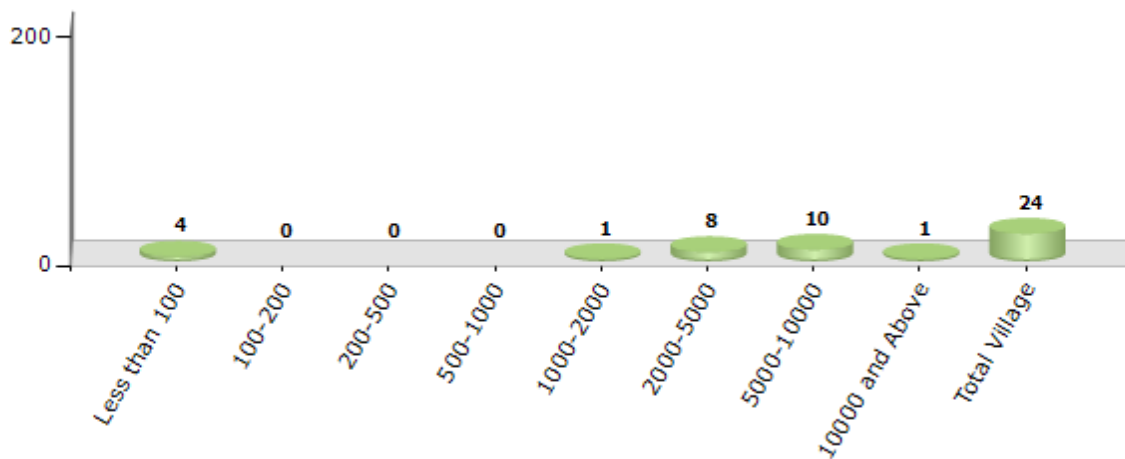
Village Name	Village Panchayat Name	Intermediate Panchayat Name
Agasteeswaram	Kovalam	Agasteeswaram
Ananthapuram	Kadukkarai, Thidal	Thovalai
Arumanalloor (Part)	Arumanalloor	Thovalai
Azhagappapuram	Maharajapuram	Agasteeswaram
Azhagiapandipuram	Kattupudur	Thovalai
Chenbagaramanputhur (Part)	Sahayanagar, Madhavalayam	Thovalai
Chiramadam	Gnalam	Thovalai
Derisanamcope	Gnalam, Thellanthi, Derisanamcope	Thovalai
Dharmapuram (Part)	Melakrishnanpudur, Kesavanputhenthurai, Althikkattuvillai, North Surangudy	Rajakkamangalam
Erachakulam	Esanthimangalam, Erachakulam	Thovalai
Eraviputhoor	Eraviputhoor , Nallur	Agasteeswaram
Esanthimangalam	Esanthimangalam	Thovalai
Kanniyakumari	Leepuram, Panchalingapuram, Maharajapuram	Agasteeswaram
Kulasekarapuram	Kulasekarapuram	Agasteeswaram
Madhusoodhanapuram (Part)	Althikkattuvillai, Kesavanputhenthurai, Melakrishnanpudur, Parakkai	Rajakkamangalam
Marangoor	Nallur	Agasteeswaram
Parakkai	Parakkai	Rajakkamangalam
Poigaimalai R.F.	Chenbagaramanputhur	Thovalai
Thadagamalai R.F.	Chenbagaramanputhur	Thovalai
Thamaraikulam (Part)	Karumpattur, North Tamaraikulam, Swamithope, Manakudi	Agasteeswaram, Rajakkamangalam
Thengamputhoor (Part)	Parakkai	Rajakkamangalam
Theroor	Ramapuram, Therekalpudur	Agasteeswaram
Thirupathisaram	Thirupathisaram, Beemanagari	Thovalai
Thovala	Thovalai, Sahayanagar	Thovalai

Demographics

Number of Villages by Population Size - 2011

Less than 100	100-200	200-500	500-1000	1000-2000	2000-5000	5000-10000	10000 and Above	Total Village
4	0	0	0	1	8	10	1	24

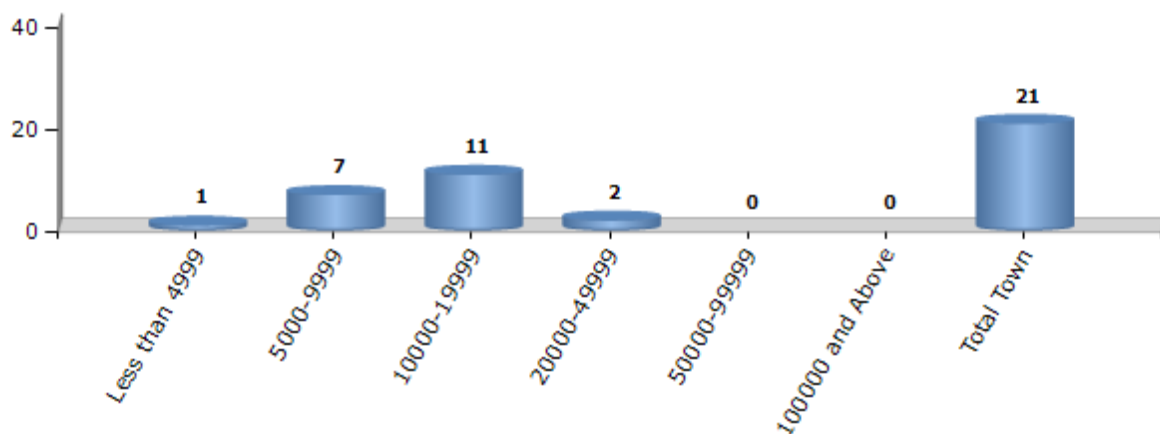
Number of Villages by Population Size - 2011



Number of Towns by Population Size - 2011

Less than 4999	5000-9999	10000-19999	20000-49999	50000-99999	100000 and Above	Total Town
1	7	11	2	0	0	21

Number of Towns by Population Size - 2011

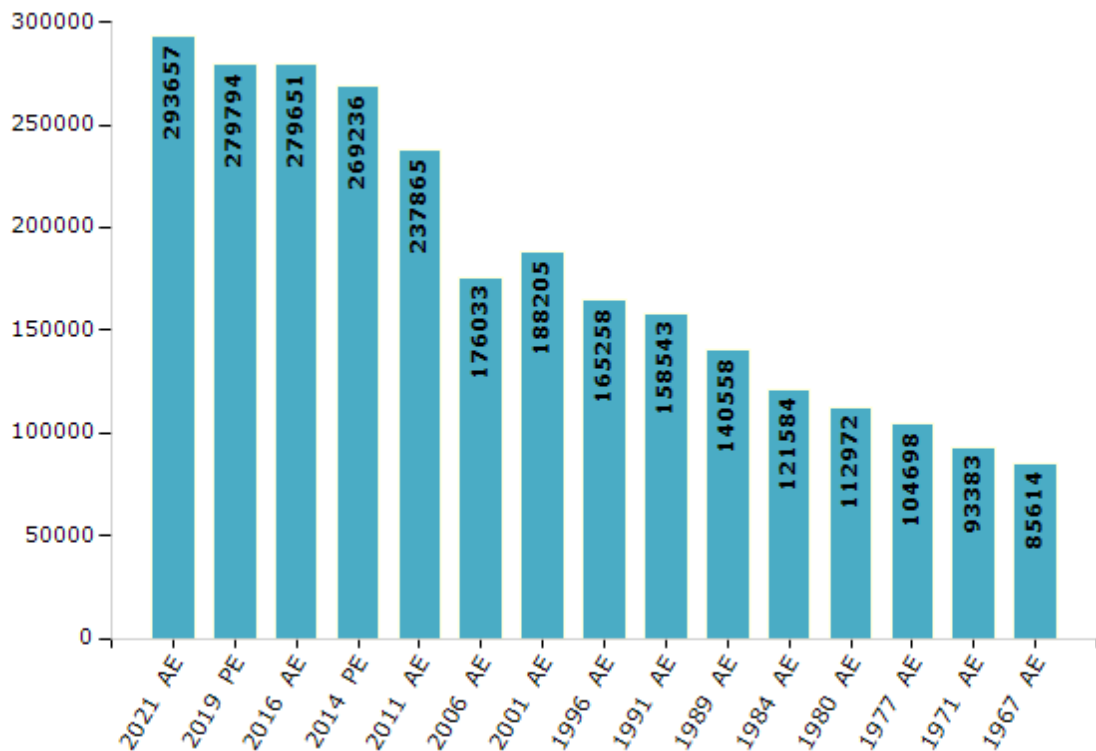


Electoral Features

Electors by Male & Female

Year	Male	Female	Others	Total	Year	Male	Female	Others	Total
2021 AE	145894	147651	112	293657	1999 PE	-	-	-	-
2019 PE	140482	139239	73	279794	1996 AE	82634	82624	-	165258
2016 AE	139608	140006	37	279651	1991 AE	78993	79550	-	158543
2014 PE	135894	133329	13	269236	1989 AE	70234	70324	-	140558
2011 AE	120632	117211	22	237865	1984 AE	61145	60439	-	121584
2009 PE	-	-	-	-	1980 AE	56269	56703	-	112972
2006 AE	88232	87801	-	176033	1977 AE	52588	52110	-	104698
2004 PE	-	-	-	-	1971 AE	46409	46974	-	93383
2001 AE	93339	94866	-	188205	1967 AE	-	-	-	85614

Number of Electors



Note : AE : Assembly Election, PE : Assembly Segment of Parliamentary Election

Historical Summary Election Results

Summary Result of Assembly Election - 2016

Candidate Name	Party	Votes	Votes %
Austin. S	DMK	89023	42.41
Thalavai Sundaram. N	AIADMK	83111	39.59
Meena Dev. M	BJP	24638	11.74
Aathilinga Perumal. D	DMDK	6914	3.29
Balasubramaniam. V	NTK	1732	0.83
Hilman Bruce Edwin. S	PMK	712	0.34
Vettivelayuthaperumal. P	IND	526	0.25
Sankararamamurthy. P	BSP	481	0.23
Sreetharan. R	IND	331	0.16
Kumaresan. T	IND	285	0.14
Makesh. N	IND	165	0.08
Raghunathan. A	IND	125	0.06
Johnson. D	IND	124	0.06
Rajesh Kannan. S	GMI	100	0.05
Bavani. V	IND	87	0.04
	NOTA	1570	0.75

Polling Station Level Election Results

Number and Name of Polling Stations (PS) (2021)

Number of Polling Stations	Name of Polling Stations	Number of Polling Stations	Name of Polling Stations
1	Christian Welfare High School, Thadikarankonam	18	Govt. High School, Kattuputhoor
2	Christian Welfare High School, Thadikarankonam	19	Govt. High School, Kattuputhoor
3	Christian Welfare High School, Thadikarankonam	20	Govt. High School, Kattuputhoor
4	Govt. Rubber Board Middle School, Keeriparai	21	Govt. Primary School, Rethnapuram
5	Govt. Rubber Board Middle School, Keeriparai	21A	Govt. Primary School, Rethnapuram
6	Govt. Hr.Sec School, Arumanalloor	22	Govt. High School Ananthapuram At Kadukkarai
7	Govt. Hr.Sec School, Arumanalloor	23	Govt. High School Ananthapuram At Kadukkarai
8	Govt. Hr.Sec School, Arumanalloor	24	Govt. High School Ananthapuram At Kadukkarai
9	Govt. High School, Pothiyoor	25	Govt. Middle School, Derisanamcope
10	Govt. High School, Pothiyoor	25A	Govt. Middle School, Derisanamcope
10A	Govt. High School, Pothiyoor	26	Govt. Middle School (Adi-Dravidar Welfare), Udaiyadi, East Building South Portion
11	Govt. High School, Pothiyoor	27	Govt. Middle School (Adi-Dravidar Welfare), Udaiyadi, East Building South Portion
11A	Govt. High School, Pothiyoor	28	Govt. Primary School, Gnam, New Building
12	Govt. Primary School, Azhagiyapandipuram	28A	Govt. Primary School, Gnam, New Building
13	Govt. Primary School, Azhagiyapandipuram	29	Govt. Primary School, Gnam, Old Building
13A	Govt. Primary School, Azhagiyapandipuram	29A	Govt. Primary School, Gnam, Old Building
14	Govt. Primary School, Azhagiyapandipuram	30	Govt. Primary School, Chiramadam, -629851
15	Lutheran Middle School, Marukalthalai	30A	Govt. Primary School, Chiramadam, -629851
15A	Lutheran Middle School, Marukalthalai	31	Govt. Primary School, Thittuvilai, East Portion
16	Govt. Primary School, Azhagiyapandipuram	31A	Govt. Primary School, Thittuvilai, East Portion
17	Govt. Hr. Sec. School, Kurathiyarai	32	Govt. Higher Sec. School, Thittuvilai, South Portion

Contd....

Polling Station Level Election Results

Polling Station-wise Votes Secured by Overall Top Five Parties in Kanniyakumari Assembly in Assembly Election (AE) under Kanniyakumari Parliamentary Constituency in Tamil Nadu (2021)

Number of Polling Station	Winner - Thalavai Sundaram N. (AIADMK)	Runner-up - Austin S. (DMK)	3rd - Sasikala R. (NTK)	4th - Selvakumar P.T. (MNM)	5th - Senthil Murugan P. (AMMKMNKZ)	NOTA	Other	Total Votes Secured
29	227	145	40	1	0	1	5	419
29A	214	226	22	1	0	1	5	469
30	188	184	35	2	4	3	2	418
30A	193	206	13	1	3	1	3	420
31	210	218	13	6	0	2	4	453
31A	200	265	9	3	1	2	3	483
32	109	232	20	4	5	1	2	373
32A	120	271	5	0	4	1	1	402
33	61	252	15	3	9	1	0	341
33A	51	354	9	1	3	1	0	419
34	60	404	37	6	25	0	3	535
35	127	334	20	4	5	1	4	495
36	124	546	45	2	21	3	5	746
37	148	212	51	1	2	2	4	420
37A	146	285	35	13	1	3	2	485
38	325	130	24	8	4	1	1	493
38A	338	127	9	7	4	2	8	495
39	202	420	56	16	2	2	2	700
40	164	238	51	1	1	1	6	462
40A	172	261	42	5	0	8	5	493
41	234	304	46	4	1	2	6	597
42	494	196	24	12	3	4	6	739
43	212	210	27	7	1	2	3	462
44	172	232	40	4	0	2	3	453
44A	187	255	29	2	1	3	6	483
45	366	98	10	9	5	1	2	491
45A	374	95	9	6	2	1	2	489
46	552	180	14	15	1	4	5	771
47	471	52	14	0	1	2	3	543
48	512	247	44	4	4	0	4	815
49	214	176	28	4	0	2	5	429
49A	248	169	15	13	4	2	4	455
50	348	278	34	7	4	2	11	684
51	154	237	28	1	3	3	5	431
52	409	218	40	9	6	5	6	693

Contd....

Polling Station Level Election Results

Winner, Runner-up and 3rd Party Position & Winning Margin According to Polling Stations in Kanniyakumari Assembly in Assembly Election (AE) under Kanniyakumari Parliamentary Constituency in Tamil Nadu (2021)

Polling Station Number	Winner Party	Winner Votes (%)	Runner-up Party	Runner-up Votes (%)	Winning Margin Votes (%)	Third Party	Third Party Votes (%)	Other Votes (%)
57	AIADMK	210 (47.4)	DMK	187 (42.21)	23 (5.19)	NTK	37 (8.35)	9 (2.03)
57A	AIADMK	224 (50.34)	DMK	185 (41.57)	39 (8.77)	NTK	23 (5.17)	13 (2.92)
58	AIADMK	317 (47.24)	DMK	306 (45.6)	11 (1.64)	NTK	34 (5.07)	14 (2.09)
59	DMK	586 (80.83)	AMMKMNKZ	60 (8.28)	526 (72.55)	AIADMK	50 (6.9)	29 (4)
60	DMK	178 (55.11)	AIADMK	121 (37.46)	57 (17.65)	NTK	18 (5.57)	6 (1.86)
61	AIADMK	547 (66.95)	DMK	226 (27.66)	321 (39.29)	NTK	22 (2.69)	22 (2.69)
62	DMK	260 (75.36)	AIADMK	53 (15.36)	207 (60)	AMMKMNKZ	23 (6.67)	9 (2.61)
62A	DMK	327 (76.05)	AIADMK	63 (14.65)	264 (61.4)	AMMKMNKZ	25 (5.81)	15 (3.49)
63	AIADMK	340 (75.06)	DMK	92 (20.31)	248 (54.75)	NTK	13 (2.87)	8 (1.77)
63A	AIADMK	324 (76.78)	DMK	72 (17.06)	252 (59.72)	NTK	15 (3.55)	11 (2.61)
64	AIADMK	247 (55.51)	DMK	171 (38.43)	76 (17.08)	NTK	14 (3.15)	13 (2.92)
65	AIADMK	611 (73.17)	DMK	173 (20.72)	438 (52.45)	NTK	27 (3.23)	24 (2.87)
66	AIADMK	395 (72.48)	DMK	106 (19.45)	289 (53.03)	NTK	25 (4.59)	19 (3.49)
67	DMK	459 (61.86)	AIADMK	214 (28.84)	245 (33.02)	NTK	59 (7.95)	10 (1.35)
68	AIADMK	249 (42.42)	DMK	236 (40.2)	13 (2.22)	NTK	72 (12.27)	30 (5.11)
69	AIADMK	278 (47.36)	DMK	218 (37.14)	60 (10.22)	NTK	62 (10.56)	29 (4.94)
70	AIADMK	263 (52.92)	DMK	190 (38.23)	73 (14.69)	NTK	30 (6.04)	14 (2.82)
70A	AIADMK	296 (57.48)	DMK	195 (37.86)	101 (19.62)	NTK	13 (2.52)	11 (2.14)
71	AIADMK	221 (47.53)	DMK	203 (43.66)	18 (3.87)	NTK	27 (5.81)	14 (3.01)
72	AIADMK	431 (58.48)	DMK	227 (30.8)	204 (27.68)	NTK	68 (9.23)	11 (1.49)
73	DMK	292 (58.17)	AIADMK	139 (27.69)	153 (30.48)	NTK	58 (11.55)	13 (2.59)
73A	DMK	301 (65.58)	AIADMK	128 (27.89)	173 (37.69)	NTK	24 (5.23)	6 (1.31)
74	DMK	371 (51.6)	AIADMK	268 (37.27)	103 (14.33)	NTK	55 (7.65)	25 (3.48)
75	AIADMK	241 (57.66)	DMK	135 (32.3)	106 (25.36)	NTK	29 (6.94)	13 (3.11)
75A	AIADMK	273 (60.67)	DMK	147 (32.67)	126 (28)	NTK	16 (3.56)	14 (3.11)
76	AIADMK	264 (49.25)	DMK	219 (40.86)	45 (8.39)	NTK	37 (6.9)	16 (2.99)
76A	AIADMK	299 (50.17)	DMK	258 (43.29)	41 (6.88)	NTK	22 (3.69)	17 (2.85)
77	AIADMK	424 (52.87)	DMK	310 (38.65)	114 (14.22)	NTK	45 (5.61)	23 (2.87)
78	AIADMK	254 (49.32)	DMK	220 (42.72)	34 (6.6)	NTK	29 (5.63)	12 (2.33)
78A	AIADMK	310 (58.05)	DMK	201 (37.64)	109 (20.41)	NTK	15 (2.81)	8 (1.5)
79	DMK	384 (55.17)	AIADMK	226 (32.47)	158 (22.7)	NTK	62 (8.91)	24 (3.45)
80	DMK	443 (62.93)	AIADMK	177 (25.14)	266 (37.79)	NTK	67 (9.52)	17 (2.41)
81	AIADMK	345 (73.09)	DMK	100 (21.19)	245 (51.9)	NTK	11 (2.33)	16 (3.39)
81A	AIADMK	381 (77.76)	DMK	88 (17.96)	293 (59.8)	MNM	10 (2.04)	11 (2.24)
82	AIADMK	253 (64.05)	DMK	103 (26.08)	150 (37.97)	AMMKMNKZ	18 (4.56)	21 (5.32)
82A	AIADMK	302 (70.4)	DMK	96 (22.38)	206 (48.02)	NTK	11 (2.56)	20 (4.66)
83	AIADMK	477 (66.43)	DMK	190 (26.46)	287 (39.97)	NTK	26 (3.62)	25 (3.48)

Contd....

Socio-Economic Amenities - Rural

Access to Education Facilities

Particulars	Number of Villages (% of Population)				
	Available	Not Available	If Not Available (Distance of Nearest Facility)		
			A	B	C
Govt. Primary School	21 (100)	3 (0)	1 (0)	2 (0)	0 (0)
Private Primary School	10 (45)	14 (55)	0 (0)	0 (0)	0 (0)
Govt. Middle School	19 (99)	5 (1)	2 (0)	3 (1)	0 (0)
Private Middle School	7 (34)	17 (66)	0 (0)	0 (0)	0 (0)
Govt. Secondary School	17 (90)	7 (10)	4 (9)	3 (1)	0 (0)
Private Secondary School	9 (48)	15 (52)	0 (0)	0 (0)	0 (0)
Govt. Senior Secondary School	7 (43)	17 (57)	8 (32)	5 (11)	1 (0)
Private Senior Secondary School	5 (23)	19 (77)	0 (0)	0 (0)	0 (0)
Govt. Arts and Science Degree College	0 (0)	24 (100)	4 (32)	7 (26)	4 (5)
Private Arts and Science Degree College	1 (5)	23 (95)	3 (13)	4 (14)	1 (5)
Govt. Engineering College	0 (0)	24 (100)	0 (0)	4 (21)	5 (10)
Private Engineering College	4 (21)	20 (79)	3 (8)	5 (23)	3 (17)
Govt. Medicine College	0 (0)	24 (100)	1 (5)	9 (38)	10 (32)
Private Medicine College	0 (0)	24 (100)	0 (0)	2 (14)	2 (11)
Govt. Management Institute	0 (0)	24 (100)	0 (0)	0 (0)	0 (0)
Private Management Institute	1 (2)	23 (98)	5 (24)	9 (35)	9 (39)
Govt. Polytechnic	0 (0)	24 (100)	0 (0)	0 (0)	3 (9)
Private Polytechnic	5 (28)	19 (72)	5 (19)	9 (44)	2 (0)
Govt. Vocational Training School/ITI	0 (0)	24 (100)	1 (2)	4 (14)	7 (37)
Private Vocational Training School/ITI	2 (13)	22 (87)	3 (17)	3 (11)	4 (6)
Govt. Non Formal Training Centre	21 (100)	3 (0)	1 (0)	2 (0)	0 (0)
Private Non Formal Training Centre	0 (0)	24 (100)	0 (0)	0 (0)	0 (0)
Govt. School For Disabled	0 (0)	24 (100)	2 (18)	7 (25)	12 (47)
Private School For Disabled	0 (0)	24 (100)	0 (0)	1 (5)	2 (4)
Government Others	1 (5)	23 (95)	0 (0)	0 (0)	0 (0)
Private Others	0 (0)	24 (100)	0 (0)	0 (0)	0 (0)

Note : Distance A : Less than 5 km; B : Between 5-10 km; C : 10+ km.; Source : Data Analysis is based on 2011 Census.

DISCLAIMER

The Terms of Use and Disclaimer of Datanet India Private Limited (hereinafter referred to as "Datanet") for use of this analysis report of **Kanniyakumari Assembly Constituency (Kanniyakumari Vidhan Sabha)** :-

1. **Assembly Factbook™** is a Registered Trade Mark owned by Datanet.
2. All the maps are sketched and graphical representation only and have not been drawn to the scale and also not to represent the actual geographical area or boundary of the unit.
3. The data for the aforesaid analysis is based on authentic sources and has been culled from the various publications of Census, CSO and NSSO for district and block level data, various central and state government departments, Central & State Elections Commissions and the concerned Returning Officers' releases, Electoral Rolls, Election results and allied publications, internal assessment, surveys, estimates and analysis. Therefore, certain adjustment of data at micro level may have been done to arrive closer to the macro data.
4. Data have been provided on an "As Is" and "As AVAILABLE" basis
5. The colours shown in the maps or diagram and charts of a particular party, alliance or AC are indicative and do not represent them.
6. This publication which includes maps, sheets, graphs and data would be the property under copyright of Datanet only. The user may use these for its internal study, analysis and research purposes. It's public display, re-selling or any commercial uses by the user are not allowed.
7. Datanet has taken due care and caution in compilation and processing of data and allied information, but does not guarantee the accuracy, adequacy or completeness of any information/analysis and will be not responsible for any errors or omissions or for the results obtained from the use of such information/analysis.
8. All the contents for the publication have been culled from various authentic sources and Datanet reasonably believes such sources to be reliable, but does not make any representations, express or implied as to the accuracy or fitness of use of such information. The information or contents of the information/analysis do not constitute advice and should not be relied upon in making (or refraining from making) any decision. Any reliance placed upon the information provided by Datanet is the sole responsibility and strictly at the user's risk.
9. In no event will Datanet be liable for any damages (including, without limitation, damages for loss of business projects, or loss of profits) arising in contract, tort or otherwise from the use of or inability to use any of its contents, or from any action taken (or refrained from being taken) as a result of using the analysis or any of its contents. Datanet its directors, owners, editors, officials, employees, distributor and agents or any associate will not be liable for any errors in the information contained or any consequences arising from the use of the contents of the provided information/analysis.
10. If any provision of these terms and conditions is held invalid or illegal or unenforceable for any reason by any court of competent jurisdiction, such provision shall be severed and the remainder of provisions of the terms and conditions shall continue in full force and effect as if the Term of Use had been executed with the invalid, illegal or unenforceable provision eliminated.
11. If there are any discrepancies in the information provided, please bring it to attention of Datanet for suitable rectification measures.

**Buy Online This Complete Book At
Datanet India eBooks Store**

www.indiastatpublications.com

or go directly at

[http://www.indiastatpublications.com/
Assembly_factbook/Tamil_Nadu/Kanniyakumari/
Kanniyakumari](http://www.indiastatpublications.com/Assembly_factbook/Tamil_Nadu/Kanniyakumari/Kanniyakumari)

 **india**stat**elections**

