



Tamil Nadu

Assembly Factbook™

Kinathukadavu Assembly Constituency



Key Electoral Data of Kinathukadavu
Assembly Constituency (Vidhan Sabha)

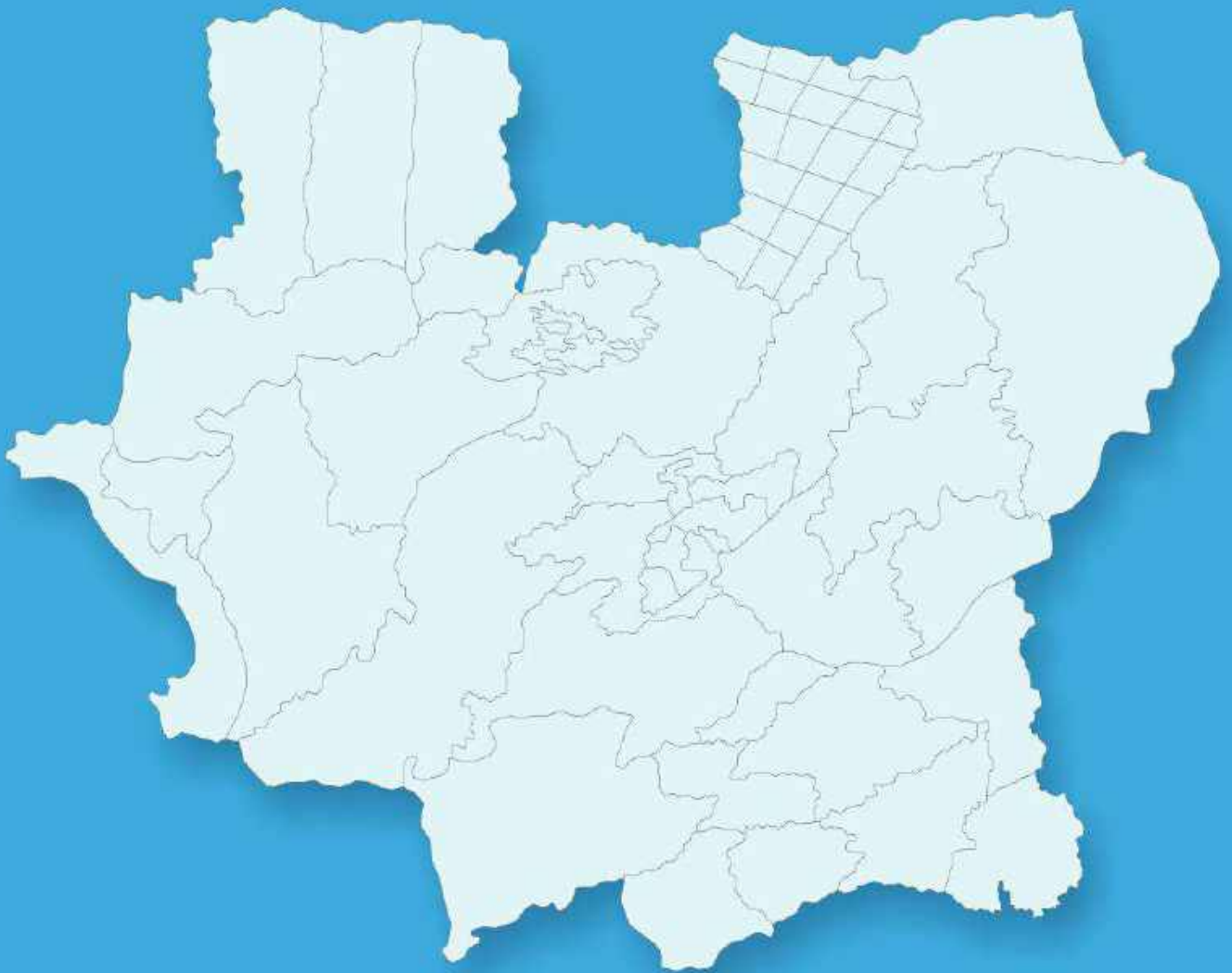


india**stat**publications

Tamil Nadu

Assembly Factbook™

Kinathukadavu Assembly Constituency



Kinathukadavu Vidhan Sabha

Editor & Director

Dr. R.K. Thukral

Research Editor

Dr. Shafeeq Rahman

Compiled, Researched and Published by Datanet India Pvt. Ltd.

D-100, 1st Floor,

Okhla Industrial Area, Phase-I,
New Delhi- 110020.

Ph.: 91-11- 43580781-84

Email : support@indiastatpublications.com

Website : www.indiastatelections.com

Online Book Store :

www.indiastatpublications.com

Report No. : AFB/TN-122-0125

ISBN : 978-93-5313-769-4

First Edition : January, 2018

Eighth Updated Edition : January, 2025

Price : Rs. 11500/-

US\$ 310

© Datanet India Pvt. Ltd.

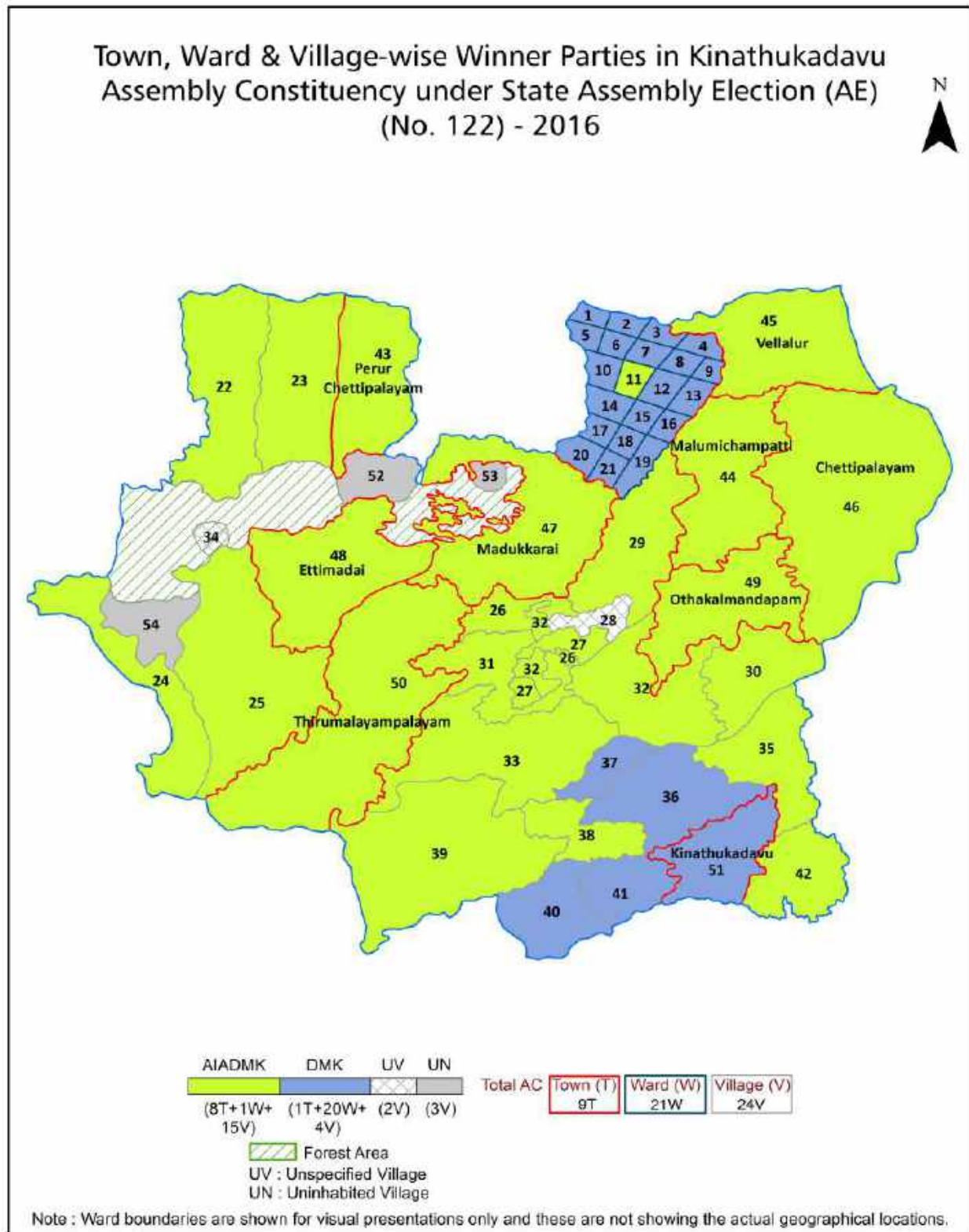
All rights reserved. No part of this book may be reproduced, stored in a retrieval system or transmitted in any form or by any means, mechanical photocopying, photographing, scanning, recording or otherwise without the prior written permission of the publisher. Please refer to Disclaimer at page no. 258 for the use of this publication.

Printed in India

Contents

No.	Particulars	Page No.
	Introduction	
1	Assembly Constituency - (Vidhan Sabha) at a Glance Features of Assembly as per Delimitation Commission of India (2008)	1-2
	Location and Political Maps	
2	Location Map Boundaries of Assembly Constituency - (Vidhan Sabha) in District Boundaries of Assembly Constituency under Parliamentary Constituency - (Lok Sabha) Town, Ward & Village-wise Winner Parties- 2024, 2021, 2019, 2016, 2014, 2011 and 2009	3-11
	Administrative Setup (2011)	
3	District Sub-district Towns Villages Inhabited Villages Uninhabited Villages Village Panchayat Intermediate Panchayat	12-15
	Demographics (2011)	
4	Population Households Rural/Urban Population Towns, Ward and Villages by Population Size Sex Ratio (Total & 0-6 Years) Religious Population Social Population Literacy Rate	16-18
	Electoral Features	
5	Important Dates of Last Elections Held Electors by Gender Service Electors Voters Voters Turnout Polling Stations & Average Number of Electors per Polling Station Electors by Age Group Present Elected Representatives	19-24
	Historical Summary Election Results	
6	Vote Share of Major Parties Winning Margin (Number & Percentage) Polarity of Parties Summary Result of Assembly Segment of Parliamentary Elections 2024, 2019, 2014, 2009, 2004 and 1999 Summary Result of Assembly Elections 2021, 2016, 2011, 2006, 2001, 1996, 1991, 1989, 1984, 1980, 1977, 1971 and 1967	25-46
	Polling Station Level Election Results	
7	Name and Number of Polling Station 2024, 2021, 2019, 2016, 2014, 2011 and 2009 Polling Station-wise Electors, Voters & Voters Turnout 2024, 2021, 2019, 2016, 2014, 2011 and 2009 Polling Station wise Elections Results 2024, 2021, 2019, 2016, 2014, 2011 and 2009	47-237
	Share of Assembly Constituency	
8	Share of Assembly Constituency - (Vidhan Sabha) in State, District and Parliamentary Constituency - (Lok Sabha)	238
	Socio-Economic Amenities (2011)	
9	Access to Administrative Units Agricultural, Manufacturing and Industrial Commodities Demographic Indicators Education Health & Manpower Drinking Water Supply Sanitation Entertainment and Recreations Infrastructure Power Food Allocation Distribution and Marketing of Agriculture Commodities Infrastructure Transport and Road Infrastructure Communication Banking and Financial Services Land Use Irrigation Source	239-254
10	Abbreviation & Sources	255-257
11	Disclaimer	258

Location & Political Map



Administrative Setup

List of Village Panchayat & Intermediate Panchayat (Block) Name - 2011

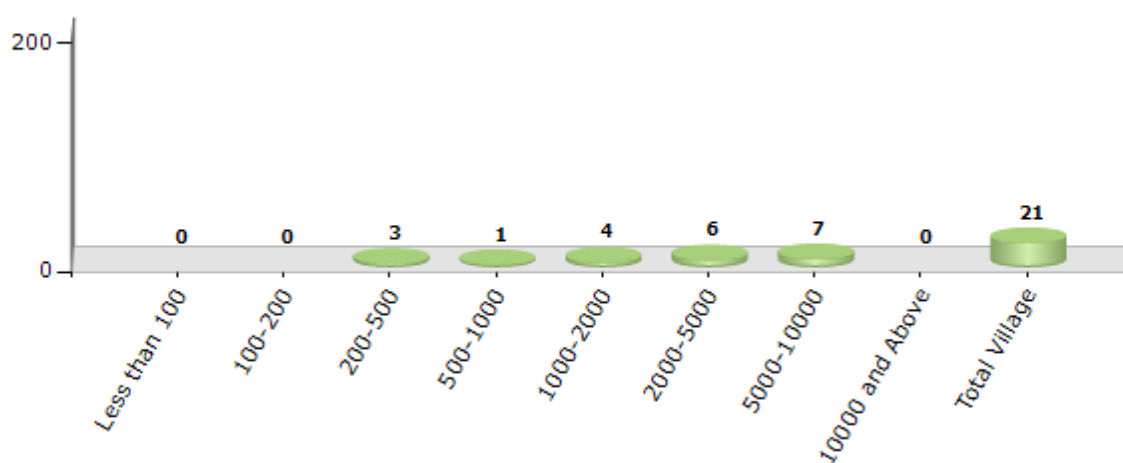
Village Name	Village Panchayat Name	Intermediate Panchayat Name
Arisippalayam	Arisippalayam	Madukkarai
Boluvampatti(R.F)	-	-
Karunchamigoundenpalayam	Nachippalayam	Madukkarai
Kodangipalayam	Kodangipalayam	Kinathukadavu
Kuthiraiampalayam	Kuthiraiampalayam	Kinathukadavu
Madampatti	Madampatti	Thondamuthur
Mavuthampathi	Mavuthampathi	Madukkarai
Muthur	Muthur	Kinathukadavu
Myleripalayam	Myleripalayam	Madukkarai
Nachippalayam	Nachippalayam	Madukkarai
Palathurai	Palathurai	Madukkarai
Pichanur	Pichanur	Madukkarai
Pottaiyandiporambu	Pottaiyandiporambu	Kinathukadavu
Sangarayapuram	Muthur	Kinathukadavu
Seerappalayam	Seerappalayam	Madukkarai
Sokkanur	Sokkanur	Kinathukadavu
Solavampalayam	Solavampalayam	Kinathukadavu
Thambagoundenpalayam	Nachippalayam	Madukkarai
Theethipalayam	Theethipalayam	Thondamuthur
Vadaputhur	Vadaputhur	Kinathukadavu
Valukkupparai	Valukkupparai	Madukkarai

Demographics

Number of Villages by Population Size - 2011

Less than 100	100-200	200-500	500-1000	1000-2000	2000-5000	5000-10000	10000 and Above	Total Village
0	0	3	1	4	6	7	0	21

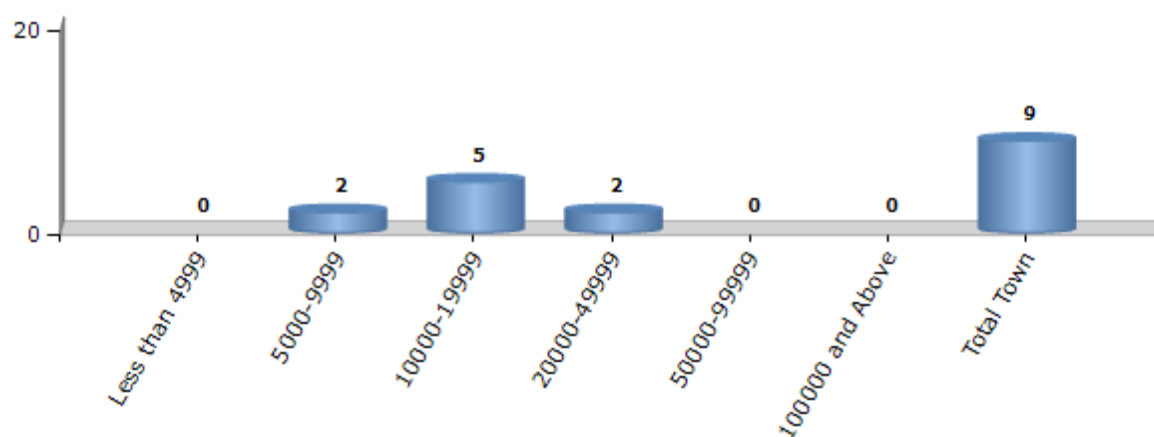
Number of Villages by Population Size - 2011



Number of Towns by Population Size - 2011

Less than 4999	5000-9999	10000-19999	20000-49999	50000-99999	100000 and Above	Total Town
0	2	5	2	0	0	9

Number of Towns by Population Size - 2011

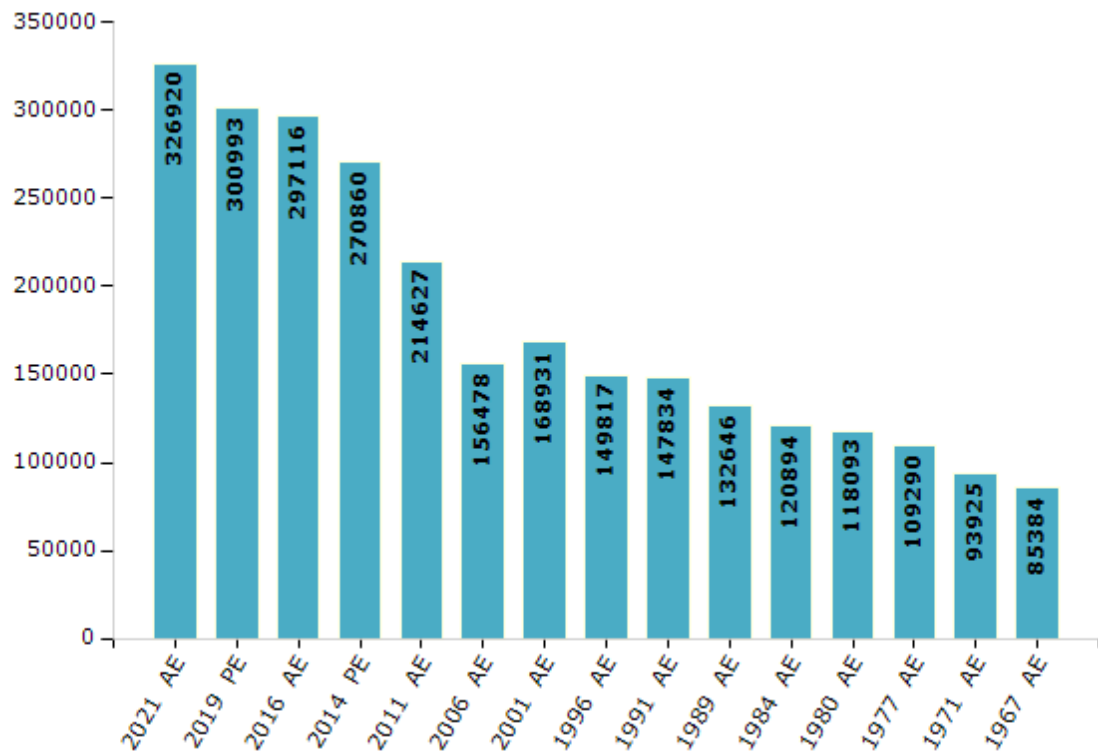


Electoral Features

Electors by Male & Female

Year	Male	Female	Others	Total	Year	Male	Female	Others	Total
2021 AE	160560	166318	42	326920	1999 PE	-	-	-	-
2019 PE	148714	152245	34	300993	1996 AE	75568	74249	-	149817
2016 AE	147416	149681	19	297116	1991 AE	74892	72942	-	147834
2014 PE	135372	135481	7	270860	1989 AE	67560	65086	-	132646
2011 AE	107670	106957	-	214627	1984 AE	60822	60072	-	120894
2009 PE	-	-	-	-	1980 AE	60193	57900	-	118093
2006 AE	77046	79432	-	156478	1977 AE	55677	53613	-	109290
2004 PE	-	-	-	-	1971 AE	46926	46999	-	93925
2001 AE	84867	84064	-	168931	1967 AE	-	-	-	85384

Number of Electors

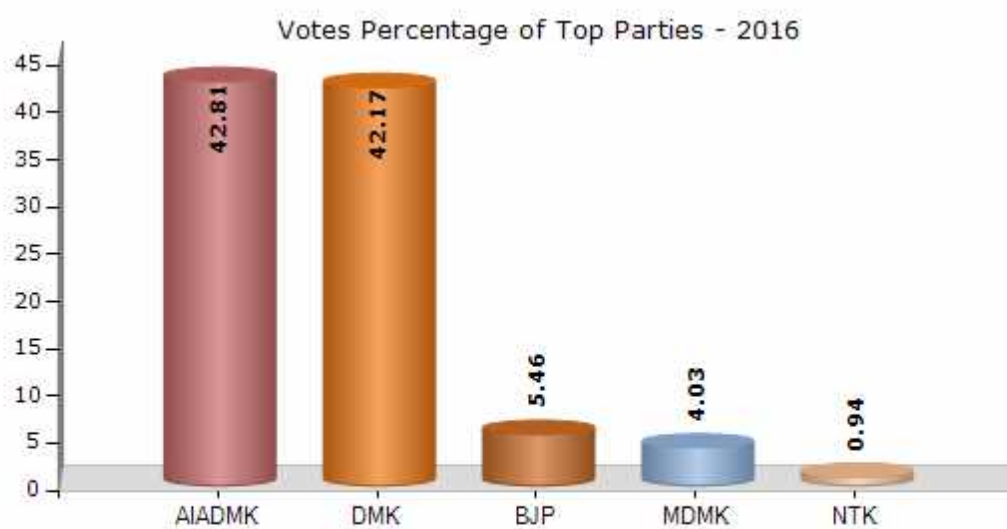


Note : AE : Assembly Election, PE : Assembly Segment of Parliamentary Election

Historical Summary Election Results

Summary Result of Assembly Election - 2016

Candidate Name	Party	Votes	Votes %
Shanmugam, A.	AIADMK	89042	42.81
Kurichi Prabhakaran	DMK	87710	42.17
Muthuramalingam, V.	BJP	11354	5.46
Eswaran, V.	MDMK	8387	4.03
Selvakumar, U.	NTK	1946	0.94
Selvakumar, S.	KMDK	1863	0.9
Abdul Kareem, M.	SDPI	1367	0.66
Chinnasami, R.	PMK	1265	0.61
Manimegalai, V.	IND	596	0.29
Pannerselvam, N.	WPOI	286	0.14
Senthilkumar, R.	IND	164	0.08
Sajithkumar, D.	IND	125	0.06
	NOTA	3884	1.87



Polling Station Level Election Results

Number and Name of Polling Stations (PS) (2021)

Number of Polling Stations	Name of Polling Stations	Number of Polling Stations	Name of Polling Stations
1	Panchayat Union Middle School, Tiled Building Facing South, Mathampatti - 641101	12A	Panchayat Union Elementary School, Tiled Building Facing East, Theethipalayam - 641010
1A	Panchayat Union Middle School, Tiled Building Facing South, Mathampatti - 641101	13	Panchayat Union Elementary School, R.C.C. Building Facing South North East Side, Theethipalayam - 641010
2	Panchayat Union Middle School, Tiled Building East Facing Northern Side, Mathampatti - 641101	14	Panchayat Union Elementary School, R.C.C. Building Eastern Building Facing West, Theethipalayam - 641010
2A	Panchayat Union Middle School, Tiled Building East Facing Northern Side, Mathampatti - 641101	14A	Panchayat Union Elementary School, R.C.C. Building Eastern Building Facing West, Theethipalayam - 641010
3	Pachayat Union Elimentary School, East Facing Tailed Building,Chellapagoundan Pudur - 641010	15	Panchayat Union Middle School, R.C.C Building the first room from North Facing West, Perur Chettipalayam - 641010
3A	Pachayat Union Elimentary School, East Facing Tailed Building,Chellapagoundan Pudur - 641010	16	Panchayat Union Middle School, R.C.C Building the Second room from North Facing West, Perur Chettipalayam - 641010
4	Panchayat Union Middle School, Western Side Building South Facing R.C.C Building, Mathampatti - 641101	16A	Panchayat Union Middle School, R.C.C Building the Second room from North Facing West, Perur Chettipalayam - 641010
5	Government Aided Middle School, Tiled Building Facing South Northern Side, Kuppanoor - 641101	17	Panchayat Union Middle School, R.C.C Building The First room from East Facing North, Perur Chettipalayam - 641010
5A	Government Aided Middle School, Tiled Building Facing South Northern Side, Kuppanoor - 641101	17A	Panchayat Union Middle School, R.C.C Building The First room from East Facing North, Perur Chettipalayam - 641010
6	Government Aided Middle School, Tiled Building Facing East Southern Building, Kuppanoor - 641101	18	Panchayat Union Middle School, R.C.C Building The Second Room From East Facing North, Perur Chettipalayam - 641010
6A	Government Aided Middle School, Tiled Building Facing East Southern Building, Kuppanoor - 641101	18A	Panchayat Union Middle School, R.C.C Building The Second Room From East Facing North, Perur Chettipalayam - 641010
7	Pachayat Union Elimentary School, West Facing RCC Building, kalampalayam - 641010	19	Panchayat Union Middle School, R.C.C Building The First Room From North Facing East, Perur Chettipalayam - 641010
8	Pachayat Union Elimentary School,North Facing RCC Building, kalampalayam - 641010	19A	Panchayat Union Middle School, R.C.C Building The First Room From North Facing East, Perur Chettipalayam - 641010
8A	Pachayat Union Elimentary School,North Facing RCC Building, kalampalayam - 641010	20	Panchayat Union Middle School, R.C.C Building The Firt Room From West Facing South, Arumugagovundanoor - 641010
9	Pachayat Union Elimentary School,Westen side, North Facing RCC Building,kalampalayam - 641010	21	Panchayat Union Middle School, R.C.C Building The Second Room From West Facing South, Arumugagovundanoor - 641010
9A	Pachayat Union Elimentary School,Westen side, North Facing RCC Building,kalampalayam - 641010	21A	Panchayat Union Middle School, R.C.C Building The Second Room From West Facing South, Arumugagovundanoor - 641010
10	Pachayat Union Elimentary School, South Facing RCC Building,kalampalayam - 641010	22	Panchayat Union Middle School, Chinnammal Garden, New R.C.C Building The First Room From East Facing North, Arumugagovundanoor - 641010
10A	Pachayat Union Elimentary School, South Facing RCC Building,kalampalayam - 641010	22A	Panchayat Union Middle School, Chinnammal Garden, New R.C.C Building The First Room From East Facing North, Arumugagovundanoor - 641010
11	Panchayat Union Elementary School, Tiled Building Facing North South Side Western Wing Building, Theethipalayam - 641010	23	Panchayat Union Middle School, Chinnammal Garden, New R.C.C Building The Second Room From East Facing North, Arumugagovundanoor - 641010
11A	Panchayat Union Elementary School, Tiled Building Facing North South Side Western Wing Building, Theethipalayam - 641010	23A	Panchayat Union Middle School, Chinnammal Garden, New R.C.C Building The Second Room From East Facing North, Arumugagovundanoor - 641010
12	Panchayat Union Elementary School, Tiled Building Facing East, Theethipalayam - 641010	24	Panchayat Union Middle School, Chinnammal Garden, New R.C.C Building The First Room From East Facing North, Arumugagovundanoor - 641010

Contd....

Polling Station Level Election Results

Polling Station-wise Votes Secured by Overall Top Five Parties in Kinathukadavu Assembly in Assembly Election (AE) under Pollachi Parliamentary Constituency in Tamil Nadu (2021)

Number of Polling Station	Winner - Damodaran. S (AIADMK)	Runner-up - Kuruchi Prabhakaran (DMK)	3rd - Siva.A (MNM)	4th - Uma jagadesh. M (NTK)	5th - Rohini Ma.Pa (AMMKMNKZ)	NOTA	Other	Total Votes Secured
21	240	169	17	10	3	5	5	449
21A	244	161	24	17	0	5	2	453
22	272	205	11	19	0	4	4	515
22A	249	144	35	56	3	14	2	503
23	250	129	46	45	6	4	5	485
23A	215	86	49	15	0	4	1	370
24	177	103	35	16	3	1	1	336
24A	189	97	54	21	9	8	5	383
25	208	165	25	6	4	2	6	416
25A	200	180	20	14	0	2	3	419
26	324	311	67	41	1	10	1	755
27	298	287	80	58	10	11	9	753
28	186	188	37	22	1	5	1	440
28A	193	237	23	22	1	5	0	481
29	304	308	20	18	0	12	4	666
30	243	235	48	38	4	4	5	577
31	261	160	42	19	5	4	0	491
31A	216	147	40	17	5	6	4	435
32	229	155	50	21	9	4	2	470
32A	201	140	59	27	2	4	1	434
33	276	262	92	39	2	4	3	678
34	172	147	42	22	0	6	1	390
34A	144	168	44	27	1	3	1	388
35	167	137	38	21	4	1	4	372
35A	239	145	40	24	1	3	1	453
36	225	198	49	24	4	4	6	510
36A	243	168	67	37	22	2	0	539
37	284	127	35	30	7	5	3	491
37A	215	136	49	24	14	4	1	443
38	346	286	43	33	3	9	3	723
39	185	155	19	17	3	1	1	381
39A	198	190	19	25	2	2	3	439
40	222	136	21	26	9	5	1	420
40A	210	152	26	39	2	3	3	435
41	160	130	41	29	8	4	1	373

Contd....

Polling Station Level Election Results

Winner, Runner-up and 3rd Party Position & Winning Margin According to Polling Stations in Kinathukadavu Assembly in Assembly Election (AE) under Pollachi Parliamentary Constituency in Tamil Nadu (2021)

Polling Station Number	Winner Party	Winner Votes (%)	Runner-up Party	Runner-up Votes (%)	Winning Margin Votes (%)	Third Party	Third Party Votes (%)	Other Votes (%)
43A	AIADMK	209 (45.53)	DMK	173 (37.69)	36 (7.84)	NTK	33 (7.19)	44 (9.59)
44	AIADMK	176 (40.65)	DMK	173 (39.95)	3 (0.7)	MNM	37 (8.55)	47 (10.85)
44A	AIADMK	199 (48.18)	DMK	164 (39.71)	35 (8.47)	MNM	31 (7.51)	19 (4.6)
45	AIADMK	344 (61.32)	DMK	170 (30.3)	174 (31.02)	MNM	18 (3.21)	29 (5.17)
45A	AIADMK	204 (45.23)	DMK	188 (41.69)	16 (3.54)	MNM	25 (5.54)	34 (7.54)
46	DMK	244 (51.8)	AIADMK	143 (30.36)	101 (21.44)	MNM	57 (12.1)	27 (5.73)
46A	AIADMK	244 (45.52)	DMK	227 (42.35)	17 (3.17)	MNM	40 (7.46)	25 (4.66)
47	AIADMK	211 (46.68)	DMK	178 (39.38)	33 (7.3)	NTK	31 (6.86)	32 (7.08)
47A	AIADMK	208 (50.73)	DMK	148 (36.1)	60 (14.63)	NTK	26 (6.34)	28 (6.83)
48	AIADMK	187 (47.83)	DMK	147 (37.6)	40 (10.23)	MNM	24 (6.14)	33 (8.44)
48A	AIADMK	203 (48.22)	DMK	148 (35.15)	55 (13.07)	MNM	32 (7.6)	38 (9.03)
49	AIADMK	256 (49.81)	DMK	183 (35.6)	73 (14.21)	MNM	38 (7.39)	37 (7.2)
49A	AIADMK	252 (48.18)	DMK	191 (36.52)	61 (11.66)	MNM	43 (8.22)	37 (7.07)
50	AIADMK	229 (48.62)	DMK	163 (34.61)	66 (14.01)	MNM	40 (8.49)	39 (8.28)
50A	AIADMK	221 (47.42)	DMK	154 (33.05)	67 (14.37)	MNM	60 (12.88)	31 (6.65)
51	AIADMK	206 (44.02)	DMK	182 (38.89)	24 (5.13)	MNM	37 (7.91)	43 (9.19)
51A	AIADMK	211 (44.42)	DMK	177 (37.26)	34 (7.16)	MNM	48 (10.11)	39 (8.21)
52	DMK	257 (70.22)	AIADMK	71 (19.4)	186 (50.82)	MNM	17 (4.64)	21 (5.74)
53	DMK	274 (69.72)	AIADMK	85 (21.63)	189 (48.09)	NTK	12 (3.05)	22 (5.6)
54	DMK	370 (77.24)	AIADMK	78 (16.28)	292 (60.96)	MNM	17 (3.55)	14 (2.92)
55	DMK	217 (73.06)	AIADMK	57 (19.19)	160 (53.87)	MNM	12 (4.04)	11 (3.7)
56	DMK	201 (83.4)	AIADMK	23 (9.54)	178 (73.86)	MNM	7 (2.9)	10 (4.15)
57	DMK	300 (52.17)	AIADMK	232 (40.35)	68 (11.82)	MNM	25 (4.35)	18 (3.13)
58	DMK	201 (41.7)	AIADMK	197 (40.87)	4 (0.83)	NTK	39 (8.09)	45 (9.34)
58A	AIADMK	198 (43.23)	DMK	176 (38.43)	22 (4.8)	NTK	41 (8.95)	43 (9.39)
59	DMK	208 (45.02)	AIADMK	158 (34.2)	50 (10.82)	NTK	47 (10.17)	49 (10.61)
59A	AIADMK	196 (43.46)	DMK	167 (37.03)	29 (6.43)	NTK	36 (7.98)	52 (11.53)
60	DMK	189 (48.84)	AIADMK	131 (33.85)	58 (14.99)	MNM	31 (8.01)	36 (9.3)
60A	AIADMK	181 (43.72)	DMK	175 (42.27)	6 (1.45)	MNM	23 (5.56)	35 (8.45)
61	DMK	237 (54.23)	AIADMK	158 (36.16)	79 (18.07)	MNM	19 (4.35)	23 (5.26)
61A	DMK	229 (49.78)	AIADMK	195 (42.39)	34 (7.39)	MNM	17 (3.7)	19 (4.13)
62	AIADMK	177 (42.55)	DMK	156 (37.5)	21 (5.05)	NTK	42 (10.1)	41 (9.86)
62A	DMK	209 (50.12)	AIADMK	155 (37.17)	54 (12.95)	NTK	31 (7.43)	22 (5.28)
63	DMK	161 (50.63)	AIADMK	105 (33.02)	56 (17.61)	MNM	30 (9.43)	22 (6.92)
63A	AIADMK	192 (44.34)	DMK	166 (38.34)	26 (6)	MNM	34 (7.85)	41 (9.47)
64	AIADMK	202 (49.03)	DMK	152 (36.89)	50 (12.14)	MNM	30 (7.28)	28 (6.8)
64A	DMK	173 (45.05)	AIADMK	154 (40.1)	19 (4.95)	MNM	33 (8.59)	24 (6.25)

Contd....

Socio-Economic Amenities - Rural

Access to Education Facilities

Particulars	Number of Villages (% of Population)				
	Available	Not Available	If Not Available (Distance of Nearest Facility)		
			A	B	C
Govt. Primary School	19 (99)	2 (1)	1 (0)	1 (0)	0 (0)
Private Primary School	1 (8)	20 (92)	0 (0)	0 (0)	0 (0)
Govt. Middle School	12 (80)	9 (20)	6 (15)	3 (4)	0 (0)
Private Middle School	1 (8)	20 (92)	0 (0)	0 (0)	0 (0)
Govt. Secondary School	6 (42)	15 (58)	8 (43)	6 (8)	0 (0)
Private Secondary School	0 (0)	21 (100)	1 (7)	0 (0)	0 (0)
Govt. Senior Secondary School	1 (3)	20 (97)	9 (50)	9 (32)	1 (8)
Private Senior Secondary School	0 (0)	21 (100)	0 (0)	1 (7)	0 (0)
Govt. Arts and Science Degree College	0 (0)	21 (100)	2 (11)	1 (12)	1 (7)
Private Arts and Science Degree College	2 (16)	19 (84)	3 (9)	7 (22)	5 (23)
Govt. Engineering College	0 (0)	21 (100)	1 (4)	2 (19)	0 (0)
Private Engineering College	4 (27)	17 (73)	4 (14)	9 (35)	1 (1)
Govt. Medicine College	0 (0)	21 (100)	0 (0)	2 (21)	18 (75)
Private Medicine College	0 (0)	21 (100)	0 (0)	0 (0)	1 (4)
Govt. Management Institute	0 (0)	21 (100)	0 (0)	1 (12)	7 (35)
Private Management Institute	2 (12)	19 (88)	4 (20)	3 (8)	4 (13)
Govt. Polytechnic	0 (0)	21 (100)	0 (0)	1 (12)	2 (9)
Private Polytechnic	4 (27)	17 (73)	2 (8)	6 (27)	6 (17)
Govt. Vocational Training School/ITI	0 (0)	21 (100)	1 (3)	1 (12)	7 (43)
Private Vocational Training School/ITI	0 (0)	21 (100)	4 (21)	3 (5)	5 (16)
Govt. Non Formal Training Centre	0 (0)	21 (100)	0 (0)	2 (14)	18 (82)
Private Non Formal Training Centre	0 (0)	21 (100)	0 (0)	1 (4)	0 (0)
Govt. School For Disabled	0 (0)	21 (100)	0 (0)	3 (21)	16 (68)
Private School For Disabled	0 (0)	21 (100)	1 (7)	0 (0)	1 (4)
Government Others	0 (0)	21 (100)	0 (0)	0 (0)	0 (0)
Private Others	0 (0)	21 (100)	0 (0)	0 (0)	0 (0)

Note : Distance A : Less than 5 km; B : Between 5-10 km; C : 10+ km.; Source : Data Analysis is based on 2011 Census.

DISCLAIMER

The Terms of Use and Disclaimer of Datanet India Private Limited (hereinafter referred to as "Datanet") for use of this analysis report of **Kinathukadavu Assembly Constituency (Kinathukadavu Vidhan Sabha)** :-

1. **Assembly Factbook™** is a Registered Trade Mark owned by Datanet.
2. All the maps are sketched and graphical representation only and have not been drawn to the scale and also not to represent the actual geographical area or boundary of the unit.
3. The data for the aforesaid analysis is based on authentic sources and has been culled from the various publications of Census, CSO and NSSO for district and block level data, various central and state government departments, Central & State Elections Commissions and the concerned Returning Officers' releases, Electoral Rolls, Election results and allied publications, internal assessment, surveys, estimates and analysis. Therefore, certain adjustment of data at micro level may have been done to arrive closer to the macro data.
4. Data have been provided on an "As Is" and "As AVAILABLE" basis
5. The colours shown in the maps or diagram and charts of a particular party, alliance or AC are indicative and do not represent them.
6. This publication which includes maps, sheets, graphs and data would be the property under copyright of Datanet only. The user may use these for its internal study, analysis and research purposes. It's public display, re-selling or any commercial uses by the user are not allowed.
7. Datanet has taken due care and caution in compilation and processing of data and allied information, but does not guarantee the accuracy, adequacy or completeness of any information/analysis and will be not responsible for any errors or omissions or for the results obtained from the use of such information/analysis.
8. All the contents for the publication have been culled from various authentic sources and Datanet reasonably believes such sources to be reliable, but does not make any representations, express or implied as to the accuracy or fitness of use of such information. The information or contents of the information/analysis do not constitute advice and should not be relied upon in making (or refraining from making) any decision. Any reliance placed upon the information provided by Datanet is the sole responsibility and strictly at the user's risk.
9. In no event will Datanet be liable for any damages (including, without limitation, damages for loss of business projects, or loss of profits) arising in contract, tort or otherwise from the use of or inability to use any of its contents, or from any action taken (or refrained from being taken) as a result of using the analysis or any of its contents. Datanet its directors, owners, editors, officials, employees, distributor and agents or any associate will not be liable for any errors in the information contained or any consequences arising from the use of the contents of the provided information/analysis.
10. If any provision of these terms and conditions is held invalid or illegal or unenforceable for any reason by any court of competent jurisdiction, such provision shall be severed and the remainder of provisions of the terms and conditions shall continue in full force and effect as if the Term of Use had been executed with the invalid, illegal or unenforceable provision eliminated.
11. If there are any discrepancies in the information provided, please bring it to attention of Datanet for suitable rectification measures.

Buy Online This Complete Book At
Datanet India eBooks Store

www.indiastatpublications.com

or go directly at

[http://www.indiastatpublications.com/
Assembly_factbook/Tamil_Nadu/Pollachi/ Kinathukadavu](http://www.indiastatpublications.com/Assembly_factbook/Tamil_Nadu/Pollachi/Kinathukadavu)

 **india**stat**elections**

