



Tamil Nadu

# Assembly Factbook™

Srivilliputhur Assembly Constituency



Key Electoral Data of Srivilliputhur  
Assembly Constituency (Vidhan Sabha)

Tamil Nadu

# **Assembly Factbook™**

Srivilliputhur Assembly Constituency



Srivilliputhur Vidhan Sabha

## **Editor & Director**

Dr. R.K. Thukral

## **Research Editor**

Dr. Shafeeq Rahman

## **Compiled, Researched and Published by Datanet India Pvt. Ltd.**

D-100, 1st Floor,

Okhla Industrial Area, Phase-I,  
New Delhi- 110020.

Ph.: 91-11- 43580781-84

Email : support@indiastatpublications.com

Website : www.indiastatelections.com

## **Online Book Store :**

www.indiastatpublications.com

**Report No. :** AFB/TN-203-0125

**ISBN :** 978-93-5313-862-2

**First Edition :** January, 2018

**Eighth Updated Edition :** January, 2025

**Price :** Rs. 11500/-

US\$ 310

**© Datanet India Pvt. Ltd.**

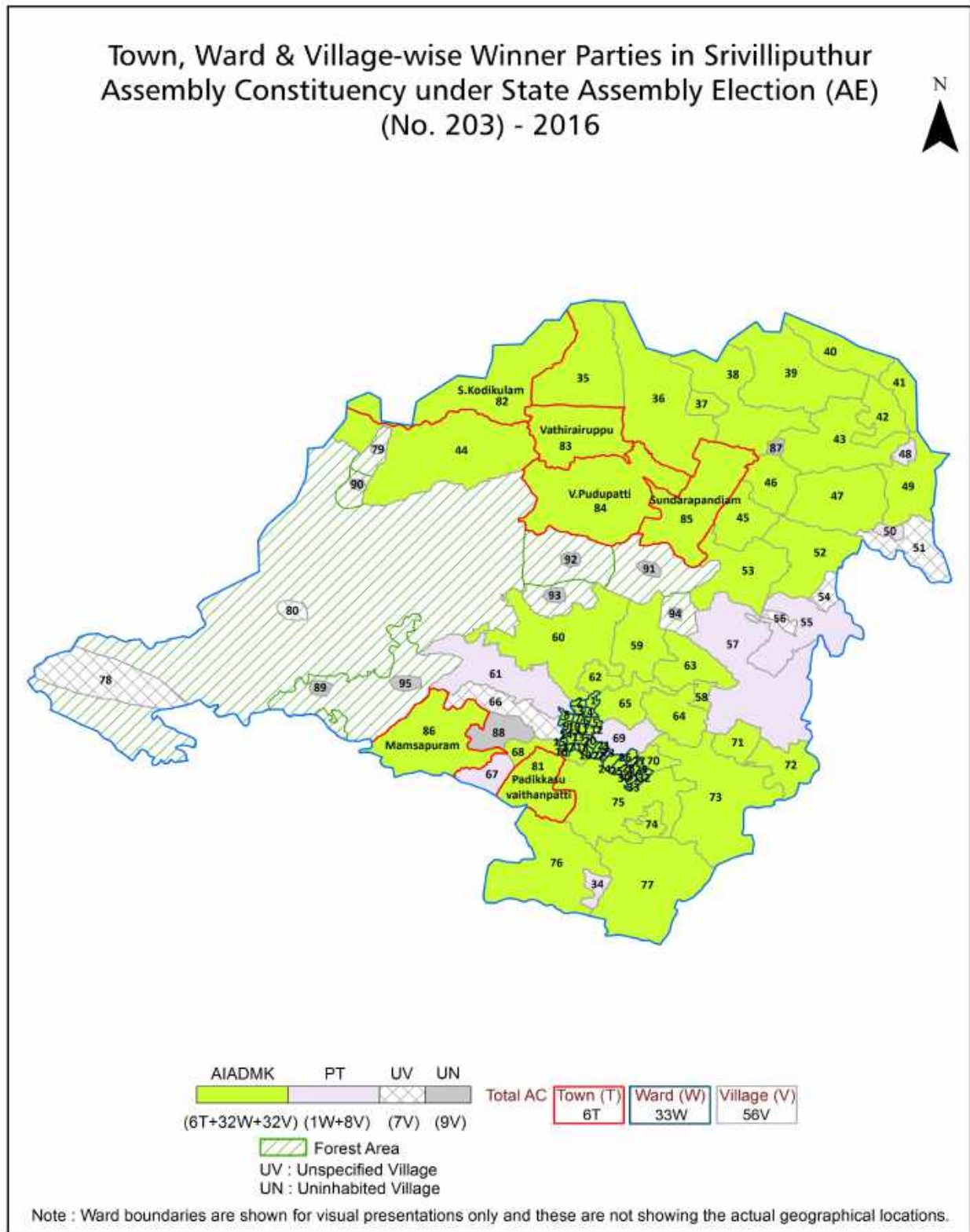
All rights reserved. No part of this book may be reproduced, stored in a retrieval system or transmitted in any form or by any means, mechanical photocopying, photographing, scanning, recording or otherwise without the prior written permission of the publisher. Please refer to Disclaimer at page no. 247 for the use of this publication.

Printed in India

## Contents

No.	Particulars	Page No.
	<b>Introduction</b>	
1	Assembly Constituency - (Vidhan Sabha) at a Glance   Features of Assembly as per Delimitation Commission of India (2008)	1-2
	<b>Location and Political Maps</b>	
2	Location Map   Boundaries of Assembly Constituency - (Vidhan Sabha) in District   Boundaries of Assembly Constituency under Parliamentary Constituency - (Lok Sabha)   Town, Ward & Village-wise Winner Parties-  2024, 2021, 2019, 2016, 2014, 2011 and 2009	3-11
	<b>Administrative Setup (2011)</b>	
3	District   Sub-district   Towns   Villages   Inhabited Villages   Uninhabited Villages   Village Panchayat   Intermediate Panchayat	12-16
	<b>Demographics (2011)</b>	
4	Population   Households   Rural/Urban Population   Towns, Ward and Villages by Population Size   Sex Ratio (Total & 0-6 Years)   Religious Population   Social Population   Literacy Rate	17-19
	<b>Electoral Features</b>	
5	Important Dates of Last Elections Held   Electors by Gender   Service Electors   Voters   Voters Turnout   Polling Stations & Average Number of Electors per Polling Station   Electors by Age Group   Present Elected Representatives	20-25
	<b>Historical Summary Election Results</b>	
6	Vote Share of Major Parties   Winning Margin (Number & Percentage)   Polarity of Parties   Summary Result of Assembly Segment of Parliamentary Elections 2024, 2019, 2014, 2009, 2004 and 1999   Summary Result of Assembly Elections 2021, 2016, 2011, 2006, 2001, 1996, 1991, 1989, 1984, 1980, 1977, 1971 and 1967	26-47
	<b>Polling Station Level Election Results</b>	
7	Name and Number of Polling Station 2024, 2021, 2019, 2016, 2014, 2011 and 2009   Polling Station-wise Electors, Voters & Voters Turnout 2024, 2021, 2019, 2016, 2014, 2011 and 2009   Polling Station wise Elections Results 2024, 2021, 2019, 2016, 2014, 2011 and 2009	48-231
	<b>Share of Assembly Constituency</b>	
8	Share of Assembly Constituency - (Vidhan Sabha) in State, District and Parliamentary Constituency - (Lok Sabha)	232
	<b>Socio-Economic Amenities (2011)</b>	
9	Access to Administrative Units   Agricultural, Manufacturing and Industrial Commodities   Demographic Indicators   Education   Health & Manpower   Drinking Water Supply   Sanitation   Entertainment and Recreations Infrastructure   Power   Food Allocation Distribution and Marketing of Agriculture Commodities Infrastructure   Transport and Road Infrastructure   Communication   Banking and Financial Services   Land Use   Irrigation Source	233-243
10	<b>Abbreviation &amp; Sources</b>	244-246
11	<b>Disclaimer</b>	247

## Location & Political Map





## Administrative Setup

### List of Village Panchayat & Intermediate Panchayat (Block) Name

Village Name	Village Panchayat Name	Intermediate Panchayat Name
Achchandavilthan	Achchandavilathan	Srivilliputhur
Ammapatti	Ammapatti	Watrap
Athikulam Sengulam	Athikulam Sengulam	Srivilliputhur
Ayaidharmam	Ayardharmam	Watrap
Ayan Karisalkulam	Ayan Karisalkulam, Kadaneri, Valayankulam, Akkanapuram	Watrap
Deyvendri	Athikulam Deivendri, Inam Chettikula	Srivilliputhur
Govindanallur	Govindanallur	Watrap
Ilandaikulam	Ilandaikulam	Watrap
Kalathur	Vadugapatti	Watrap
Khansabpuram	Khansapuram, Ramasamipuram	Watrap
Khansabpuram (Unnipath RF)	Khansapuram	Watrap
Kottaiyur	Kottaiyur	Watrap
Kunnur	Kunnur, Valayampatti, Rangappanaickenpatti	Watrap
Kurukkalkulam	Thiruvannamalai	Srivilliputhur
Maharajapuram	Maharajapuram, Mathur	Watrap
Malli	Mallipudur, Malli	Srivilliputhur
Mamsapuram	Idayankulam	Srivilliputhur
Mullikulam	Mullikulam	Srivilliputhur
Muthuvenkatarayapuram	Achankulam	Srivilliputhur
Muvaraivenran	Moovaraivendran	Watrap
Nachchiyarkovil	Ayannachiarkoil	Srivilliputhur
Nallingaperi	Poovani , Ayannachiarkoi	Srivilliputhur
Nathampatti	Ayan Nathampatti	Watrap
Pattakkulam Sallipatti	Pattakulamsallipatti	Srivilliputhur
Pillaiyarkulam (part)	Pillaiyarkulam	Srivilliputhur
Pillaiyarnatham	Pillaiyarnatham	Srivilliputhur
Ponnangani	Kottaipatti	Srivilliputhur
Puvani	Poovani	Srivilliputhur
Reghunathapuram	P.Ramachandrapuram	Srivilliputhur

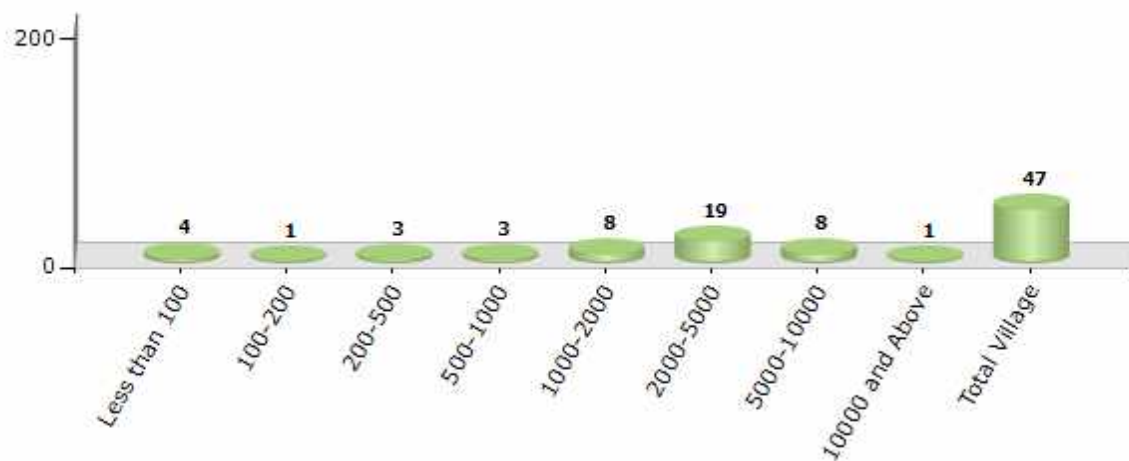
Contd....

## Demographics

### Number of Villages by Population Size - 2011

Less than 100	100-200	200-500	500-1000	1000-2000	2000-5000	5000-10000	10000 and Above	Total Village
4	1	3	3	8	19	8	1	47

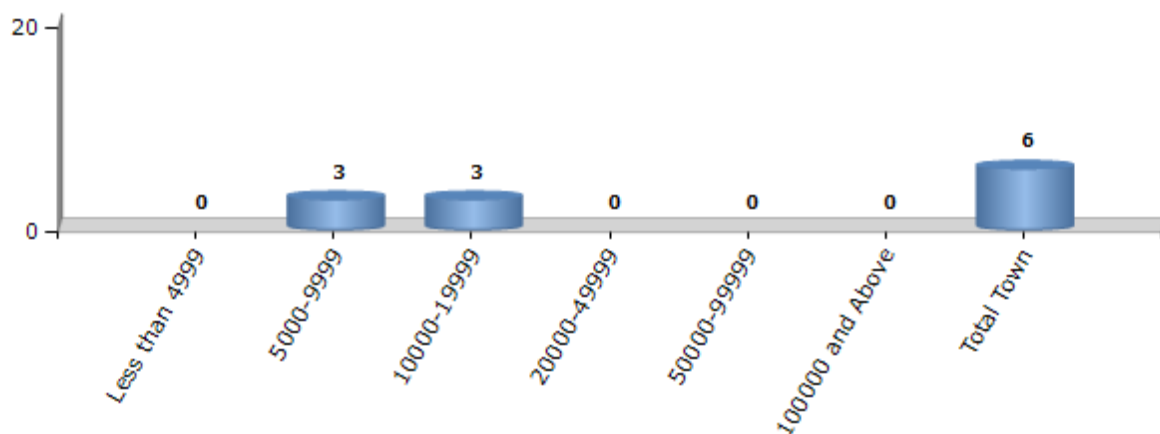
Number of Villages by Population Size - 2011



### Number of Towns by Population Size - 2011

Less than 4999	5000-9999	10000-19999	20000-49999	50000-99999	100000 and Above	Total Town
0	3	3	0	0	0	6

Number of Towns by Population Size - 2011



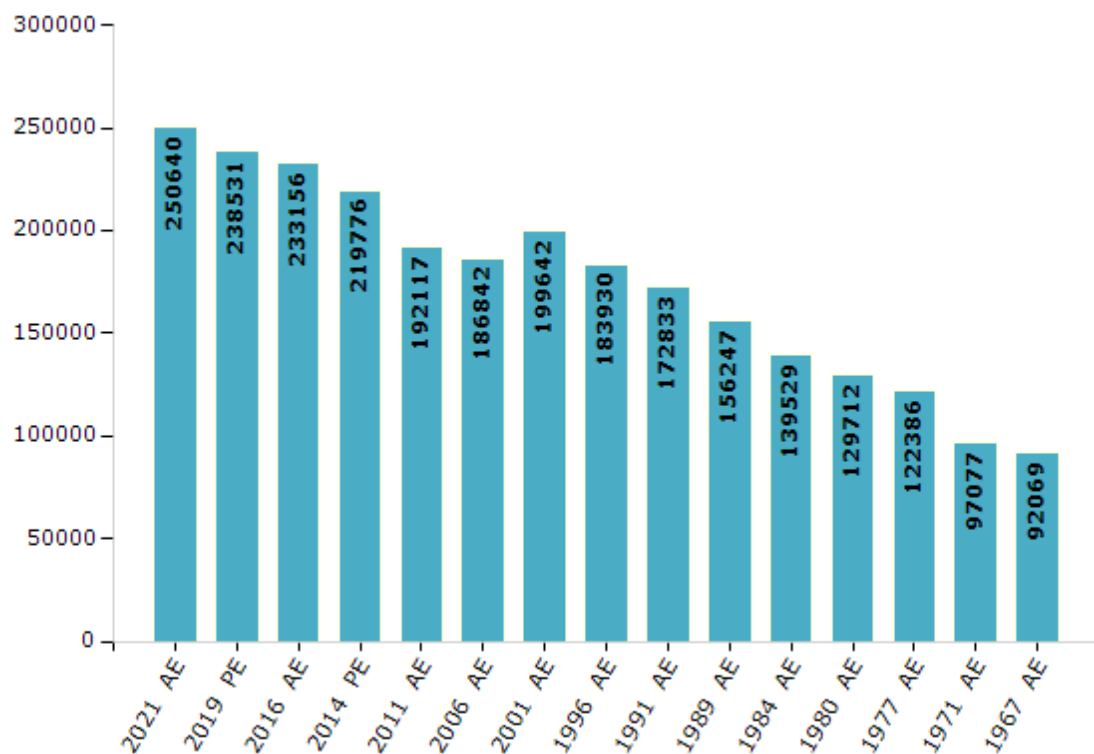
## Electoral Features

### Electors by Male & Female

Year	Male	Female	Others	Total
2021 AE	122432	128176	32	250640
2019 PE	116989	121512	30	238531
2016 AE	115161	117967	28	233156
2014 PE	109246	110512	18	219776
2011 AE	95596	96520	1	192117
2009 PE	-	-	-	-
2006 AE	91432	95410	-	186842
2004 PE	-	-	-	-
2001 AE	98965	100677	-	199642

Year	Male	Female	Others	Total
1999 PE	-	-	-	-
1996 AE	91125	92805	-	183930
1991 AE	85243	87590	-	172833
1989 AE	77134	79113	-	156247
1984 AE	68070	71459	-	139529
1980 AE	63204	66508	-	129712
1977 AE	59161	63225	-	122386
1971 AE	46337	50740	-	97077
1967 AE	-	-	-	92069

Number of Electors



**Note :** AE : Assembly Election, PE : Assembly Segment of Parliamentary Election



## Historical Summary Election Results

### Summary Result of Assembly Election - 2016

Candidate Name	Party	Votes	Votes %
Chandra Prabha. M	AIADMK	88103	49.32
Muthukumar.C	PT	51430	28.79
Lingam.P	CPI	19415	10.87
Ramasamy. I	BJP	5497	3.08
Kalyanasundaram. A	NTK	3833	2.15
Thamaraiselvam. K	IND	1695	0.95
Ganesan. S	IND	1631	0.91
Vellaisamy. V	PMK	1119	0.63
Karthikeyan. B	IND	958	0.54
Muniyandi. M	IND	596	0.33
Muthaiah. A	IND	529	0.3
Dheivendhiran. S	IND	464	0.26
Sankaran. A	IND	406	0.23
Pandi Muniraja. M	IND	347	0.19
Sakthivel. C	IND	264	0.15
Guruvaiya. N	IND	177	0.1
	NOTA	2166	1.21

## Polling Station Level Election Results

### Number and Name of Polling Stations (PS) (2021)

Number of Polling Stations	Name of Polling Stations	Number of Polling Stations	Name of Polling Stations
1	Watrap P.U.Middle School, East Building - Khansapuram-626133	17	Govt. Hr. Sec School, East Side, West Facing, North Building, Koomapatti - 626133
1A	Watrap P.U.Middle School, East Building - Khansapuram-626133	18	C.S.I.Primary School, North Side Koomapatti -626133
2	Watrap P.U.Middle School, West Building - Khansapuram-626133	19	C.S.I. Primary School, South Side Koomapatti - 626133
2A	Watrap P.U.Middle School, West Building - Khansapuram-626133	20	Govt. Hr.Sec School, East back Side, West Facing, Middle Building, - Koomapatti - 626133
3	Integrated Child Development Scheme Centre, Khansapuram - 626 133	21	Govt. Hr Sec.School, East back side, West Facing, South Building, Koomapatti - 626133
4	Panchayat Office New Meeting Hall, Ramasamiyapuram-626133	21A	Govt. Hr Sec.School, East back side, West Facing, South Building, Koomapatti - 626133
5	Puthuvalzhvu Thittam Building, Ramasamiyapuram West626133	22	Watrap P.U. Middle School, North Building, West Side Sethunarayanapuram -626132
6	T.E.L.C.Middle School , East Side North BuildingRamasamiyapuram 626133	23	Watrap P.U. Middle School, South Building, East Side Sethunarayanapuram-626132
6A	T.E.L.C.Middle School , East Side North BuildingRamasamiyapuram 626133	24	Watrap P.U. Middle School , Additional Building West Portion Sethunarayanapuram -626132
7	T.E.L.C.Middle School , West Side North Building, Ramasamiyapuram 626133	24A	Watrap P.U. Middle School , Additional Building West Portion Sethunarayanapuram -626132
8	T.E.L.C.Middle School East Side - South Building Ramasamiyapuram626133	25	Watrap P.U.Middle School, Additional Building East Portion Sethunarayanapuram - 626132
8A	T.E.L.C.Middle School East Side - South Building Ramasamiyapuram626133	26	Government Hr.Sec. School, East Building North Side - Maharajapuram - 626149
9	Watrap P.U.Middle School, North New Building West Side Nedunkulam - Koomapatti - 626133	26A	Government Hr.Sec. School, East Building North Side - Maharajapuram - 626149
10	Watrap P.U.Middle School, North New Building East Side, Nedunkulam, Koomapatti - 626133	27	Govt. Hr. Sec. School , East Building South Side, Maharajapuram - 626149
11	Watrap P.U.Primary School, South Building West Side - Koomapatti - 626133	28	Govt. Hr. Sec. School, South Building North side - Maharajapuram-626149
11A	Watrap P.U.Primary School, South Building West Side - Koomapatti - 626133	28A	Govt. Hr. Sec. School, South Building North side - Maharajapuram-626149
12	Watrap P.U.Primary School, South Building East Side - Middle Portion Koomapatti626133	29	Govt. Hr. Sec. School, East Building, South side, Middle Portion, East facing, Maharajapuram-626149
13	Watrap P.U.Primary School South Building, East Side Last Portion Koomapatti-626133	30	Watrap P.U. Primary School, Western Building, North Side - Maharajapuram-626149
14	Govt Girls Hr.Sec.School, North Side Portion, South Facing, West Hall Koomapatti-626133	31	Watrap P.U.Primary School, Western Building, South Side - Maharajapuram-626149
15	Govt. Girls Hr. Sec. School, North Side Portion, South Facing, East Hall, Koomapatti 626 133	32	Watrap P.U.Primary School, East Building - Rengapalaiyam-626149
16	Govt. Girls Hr. Sec School, West Portion, East Facing, North Side Koomapatti 626133	33	Watrap P.U. Middle School, West Building, West Side Thambipatti-626149

Contd....

## Polling Station Level Election Results

### Polling Station-wise Votes Secured by Overall Top Five Parties in Srivilliputhur Assembly in Assembly Election (AE) under Tenkasi Parliamentary Constituency in Tamil Nadu (2021)

Number of Polling Station	Winner - Manraj, E.M. (AIADMK)	Runner-up - Madhavarao, P.S.W. (INC)	3rd - Sangeethapriya, S. (AMMKMNKZ)	4th - Abinaya, B. (NTK)	5th - Shanthi, S. (PT)	NOTA	Other	Total Votes Secured
28	172	142	10	37	0	5	5	371
28A	236	131	25	20	0	5	2	419
29	170	204	33	29	0	6	1	443
30	210	134	16	32	0	2	12	406
31	107	475	37	32	1	4	10	666
32	166	170	40	14	86	3	10	489
33	178	297	113	50	6	3	7	654
34	133	121	44	82	1	1	4	386
34A	231	112	44	34	2	2	6	431
35	272	302	112	48	2	5	10	751
36	296	222	133	85	0	5	16	757
37	192	115	89	54	5	1	13	469
38	165	184	77	56	4	3	11	500
39	124	192	105	61	1	2	14	499
40	184	150	74	52	13	2	6	481
40A	205	148	56	26	4	5	19	463
41	149	126	40	23	0	1	5	344
42	120	223	55	61	0	1	10	470
43	326	132	160	35	1	4	11	669
44	132	140	33	20	0	4	6	335
45	211	68	100	14	2	1	3	399
46	293	198	96	76	5	2	10	680
47	133	60	168	24	0	3	7	395
47A	180	71	169	11	1	0	4	436
48	278	255	83	23	0	1	14	654
49	188	119	7	26	2	0	6	348
50	265	158	16	26	2	6	3	476
51	338	289	21	27	2	4	6	687
52	296	125	71	46	2	1	7	548
53	190	243	25	32	0	2	4	496
54	209	119	111	86	0	5	22	552
55	126	103	103	53	0	6	6	397
55A	153	134	120	31	0	1	7	446
56	214	156	110	94	0	13	40	627
57	248	192	276	73	3	7	12	811

Contd....

## Polling Station Level Election Results

**Winner, Runner-up and 3rd Party Position & Winning Margin According to Polling Stations in Srivilliputhur Assembly in Assembly Election (AE) under Tenkasi Parliamentary Constituency in Tamil Nadu (2021)**

Polling Station Number	Winner Party	Winner Votes (%)	Runner-up Party	Runner-up Votes (%)	Winning Margin Votes (%)	Third Party	Third Party Votes (%)	Other Votes (%)
58	AMMKMNKZ	216 (55.1)	INC	77 (19.64)	139 (35.46)	AIADMK	61 (15.56)	38 (9.69)
59	AIADMK	203 (38.96)	INC	152 (29.17)	51 (9.79)	NTK	112 (21.5)	54 (10.36)
60	AIADMK	261 (52.3)	INC	166 (33.27)	95 (19.03)	NTK	27 (5.41)	45 (9.02)
61	INC	295 (47.58)	AIADMK	191 (30.81)	104 (16.77)	NTK	70 (11.29)	64 (10.32)
62	INC	257 (47.24)	AIADMK	160 (29.41)	97 (17.83)	NTK	65 (11.95)	62 (11.4)
63	NTK	122 (31.94)	INC	121 (31.68)	1 (0.26)	AIADMK	117 (30.63)	22 (5.76)
64	AIADMK	278 (41.19)	INC	207 (30.67)	71 (10.52)	NTK	101 (14.96)	89 (13.19)
65	AIADMK	271 (43.99)	INC	158 (25.65)	113 (18.34)	AMMKMNKZ	109 (17.69)	78 (12.66)
66	AIADMK	228 (35.74)	INC	203 (31.82)	25 (3.92)	AMMKMNKZ	105 (16.46)	102 (15.99)
67	INC	178 (31.9)	AIADMK	171 (30.65)	7 (1.25)	AMMKMNKZ	128 (22.94)	81 (14.52)
68	INC	176 (33.78)	AIADMK	133 (25.53)	43 (8.25)	AMMKMNKZ	124 (23.8)	88 (16.89)
69	AMMKMNKZ	207 (40.35)	AIADMK	158 (30.8)	49 (9.55)	INC	94 (18.32)	54 (10.53)
70	INC	198 (42.58)	AIADMK	139 (29.89)	59 (12.69)	NTK	59 (12.69)	69 (14.84)
70A	INC	185 (42.05)	AIADMK	138 (31.36)	47 (10.69)	AMMKMNKZ	69 (15.68)	48 (10.91)
71	INC	134 (43.37)	AIADMK	79 (25.57)	55 (17.8)	AMMKMNKZ	64 (20.71)	32 (10.36)
72	INC	286 (60.85)	AIADMK	83 (17.66)	203 (43.19)	AMMKMNKZ	70 (14.89)	31 (6.6)
72A	INC	305 (58.77)	AMMKMNKZ	95 (18.3)	210 (40.47)	AIADMK	92 (17.73)	27 (5.2)
73	AIADMK	262 (46.7)	INC	203 (36.19)	59 (10.51)	AMMKMNKZ	44 (7.84)	52 (9.27)
74	PT	182 (28.93)	INC	178 (28.3)	4 (0.63)	AIADMK	152 (24.17)	117 (18.6)
75	AIADMK	133 (29.23)	INC	131 (28.79)	2 (0.44)	PT	115 (25.27)	76 (16.7)
76	AIADMK	335 (45.77)	AMMKMNKZ	185 (25.27)	150 (20.5)	INC	133 (18.17)	79 (10.79)
77	AIADMK	96 (30.48)	INC	94 (29.84)	2 (0.64)	AMMKMNKZ	72 (22.86)	53 (16.83)
78	INC	347 (53.55)	AIADMK	197 (30.4)	150 (23.15)	AMMKMNKZ	59 (9.1)	45 (6.94)
79	AIADMK	185 (53.31)	INC	94 (27.09)	91 (26.22)	AMMKMNKZ	39 (11.24)	29 (8.36)
80	AIADMK	200 (43.01)	INC	148 (31.83)	52 (11.18)	AMMKMNKZ	75 (16.13)	42 (9.03)
81	AIADMK	205 (36.35)	AMMKMNKZ	179 (31.74)	26 (4.61)	INC	110 (19.5)	70 (12.41)
82	AIADMK	255 (51.72)	INC	127 (25.76)	128 (25.96)	AMMKMNKZ	56 (11.36)	55 (11.16)
83	AIADMK	273 (52.7)	INC	133 (25.68)	140 (27.02)	AMMKMNKZ	57 (11)	55 (10.62)
84	AIADMK	228 (41.91)	INC	167 (30.7)	61 (11.21)	AMMKMNKZ	86 (15.81)	63 (11.58)
85	AIADMK	311 (46.84)	INC	195 (29.37)	116 (17.47)	AMMKMNKZ	73 (10.99)	85 (12.8)
86	AIADMK	267 (55.28)	INC	141 (29.19)	126 (26.09)	NTK	33 (6.83)	42 (8.7)
87	AIADMK	195 (43.82)	INC	147 (33.03)	48 (10.79)	PT	45 (10.11)	58 (13.03)
88	AIADMK	262 (41.65)	INC	198 (31.48)	64 (10.17)	PT	82 (13.04)	87 (13.83)
89	INC	273 (60.4)	AIADMK	112 (24.78)	161 (35.62)	NTK	32 (7.08)	35 (7.74)
90	AIADMK	187 (37.7)	INC	156 (31.45)	31 (6.25)	NTK	48 (9.68)	105 (21.17)

Contd....

## Socio-Economic Amenities - Rural

### Access to Education Facilities

Particulars	Number of Villages (% of Population)				
	Available	Not Available	If Not Available (Distance of Nearest Facility)		
			A	B	C
Govt. Primary School	38 (94)	9 (6)	4 (2)	2 (0)	1 (0)
Private Primary School	15 (53)	32 (47)	0 (0)	0 (0)	0 (0)
Govt. Middle School	23 (74)	24 (26)	14 (9)	1 (1)	3 (0)
Private Middle School	9 (28)	38 (72)	1 (2)	0 (0)	0 (0)
Govt. Secondary School	12 (36)	35 (64)	20 (37)	4 (9)	3 (0)
Private Secondary School	4 (17)	43 (83)	5 (9)	1 (2)	0 (0)
Govt. Senior Secondary School	8 (25)	39 (75)	16 (35)	10 (19)	1 (3)
Private Senior Secondary School	4 (17)	43 (83)	5 (9)	2 (3)	3 (0)
Govt. Arts and Science Degree College	0 (0)	47 (100)	0 (0)	0 (0)	3 (0)
Private Arts and Science Degree College	2 (12)	45 (88)	7 (6)	20 (47)	15 (35)
Govt. Engineering College	0 (0)	47 (100)	0 (0)	0 (0)	0 (0)
Private Engineering College	2 (12)	45 (88)	7 (6)	20 (47)	18 (35)
Govt. Medicine College	0 (0)	47 (100)	0 (0)	0 (0)	42 (93)
Private Medicine College	0 (0)	47 (100)	0 (0)	0 (0)	5 (7)
Govt. Management Institute	0 (0)	47 (100)	0 (0)	0 (0)	0 (0)
Private Management Institute	1 (8)	46 (92)	7 (10)	14 (32)	25 (50)
Govt. Polytechnic	0 (0)	47 (100)	0 (0)	0 (0)	1 (2)
Private Polytechnic	1 (8)	46 (92)	5 (7)	17 (41)	23 (41)
Govt. Vocational Training School/ITI	1 (4)	46 (96)	0 (0)	0 (0)	1 (2)
Private Vocational Training School/ITI	1 (8)	46 (92)	7 (5)	18 (39)	19 (42)
Govt. Non Formal Training Centre	39 (97)	8 (3)	5 (3)	2 (0)	1 (0)
Private Non Formal Training Centre	0 (0)	47 (100)	0 (0)	0 (0)	0 (0)
Govt. School For Disabled	0 (0)	47 (100)	0 (0)	0 (0)	1 (2)
Private School For Disabled	1 (3)	46 (97)	4 (14)	14 (20)	27 (62)
Government Others	0 (0)	47 (100)	0 (0)	0 (0)	0 (0)
Private Others	0 (0)	47 (100)	0 (0)	0 (0)	0 (0)

Note : Distance A : Less than 5 km; B : Between 5-10 km; C : 10+ km.; Source : Data Analysis is based on 2011 Census.

## DISCLAIMER

The Terms of Use and Disclaimer of Datanet India Private Limited (hereinafter referred to as "Datanet") for use of this analysis report of **Srivilliputhur Assembly Constituency (Srivilliputhur Vidhan Sabha)** :-

1. **Assembly Factbook™** is a Registered Trade Mark owned by Datanet.
2. All the maps are sketched and graphical representation only and have not been drawn to the scale and also not to represent the actual geographical area or boundary of the unit.
3. The data for the aforesaid analysis is based on authentic sources and has been culled from the various publications of Census, CSO and NSSO for district and block level data, various central and state government departments, Central & State Elections Commissions and the concerned Returning Officers' releases, Electoral Rolls, Election results and allied publications, internal assessment, surveys, estimates and analysis. Therefore, certain adjustment of data at micro level may have been done to arrive closer to the macro data.
4. Data have been provided on an "As Is" and "As AVAILABLE" basis
5. The colours shown in the maps or diagram and charts of a particular party, alliance or AC are indicative and do not represent them.
6. This publication which includes maps, sheets, graphs and data would be the property under copyright of Datanet only. The user may use these for its internal study, analysis and research purposes. It's public display, re-selling or any commercial uses by the user are not allowed.
7. Datanet has taken due care and caution in compilation and processing of data and allied information, but does not guarantee the accuracy, adequacy or completeness of any information/analysis and will be not responsible for any errors or omissions or for the results obtained from the use of such information/analysis.
8. All the contents for the publication have been culled from various authentic sources and Datanet reasonably believes such sources to be reliable, but does not make any representations, express or implied as to the accuracy or fitness of use of such information. The information or contents of the information/analysis do not constitute advice and should not be relied upon in making (or refraining from making) any decision. Any reliance placed upon the information provided by Datanet is the sole responsibility and strictly at the user's risk.
9. In no event will Datanet be liable for any damages (including, without limitation, damages for loss of business projects, or loss of profits) arising in contract, tort or otherwise from the use of or inability to use any of its contents, or from any action taken (or refrained from being taken) as a result of using the analysis or any of its contents. Datanet its directors, owners, editors, officials, employees, distributor and agents or any associate will not be liable for any errors in the information contained or any consequences arising from the use of the contents of the provided information/analysis.
10. If any provision of these terms and conditions is held invalid or illegal or unenforceable for any reason by any court of competent jurisdiction, such provision shall be severed and the remainder of provisions of the terms and conditions shall continue in full force and effect as if the Term of Use had been executed with the invalid, illegal or unenforceable provision eliminated.
11. If there are any discrepancies in the information provided, please bring it to attention of Datanet for suitable rectification measures.



**Buy Online This Complete Book At**  
**Datanet India eBooks Store**

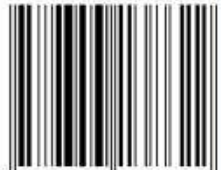
[www.indiastatpublications.com](http://www.indiastatpublications.com)

or go directly at

[http://www.indiastatpublications.com/  
Assembly\\_factbook/Tamil\\_Nadu/Tenkasi/ Srivilliputhur](http://www.indiastatpublications.com/Assembly_factbook/Tamil_Nadu/Tenkasi/Srivilliputhur)

 **indiastat**elections

ISBN : 978-93-5313-862-2



9 789353 138622