



Tamil Nadu

Assembly Factbook™

Usilampatti Assembly Constituency



Key Electoral Data of Usilampatti
Assembly Constituency (Vidhan Sabha)

Tamil Nadu

Assembly Factbook™

Usilampatti Assembly Constituency



Usilampatti Vidhan Sabha

Editor & Director

Dr. R.K. Thukral

Research Editor

Dr. Shafeeq Rahman

Compiled, Researched and Published by Datanet India Pvt. Ltd.

D-100, 1st Floor,

Okhla Industrial Area, Phase-I,
New Delhi- 110020.

Ph.: 91-11- 43580781-84

Email : support@indiastatpublications.com

Website : www.indiastatelections.com

Online Book Store :

www.indiastatpublications.com

Report No. : AFB/TN-197-0125

ISBN : 978-93-5313-904-9

First Edition : January, 2018

Eighth Updated Edition : January, 2025

Price : Rs. 11500/-

US\$ 310

© Datanet India Pvt. Ltd.

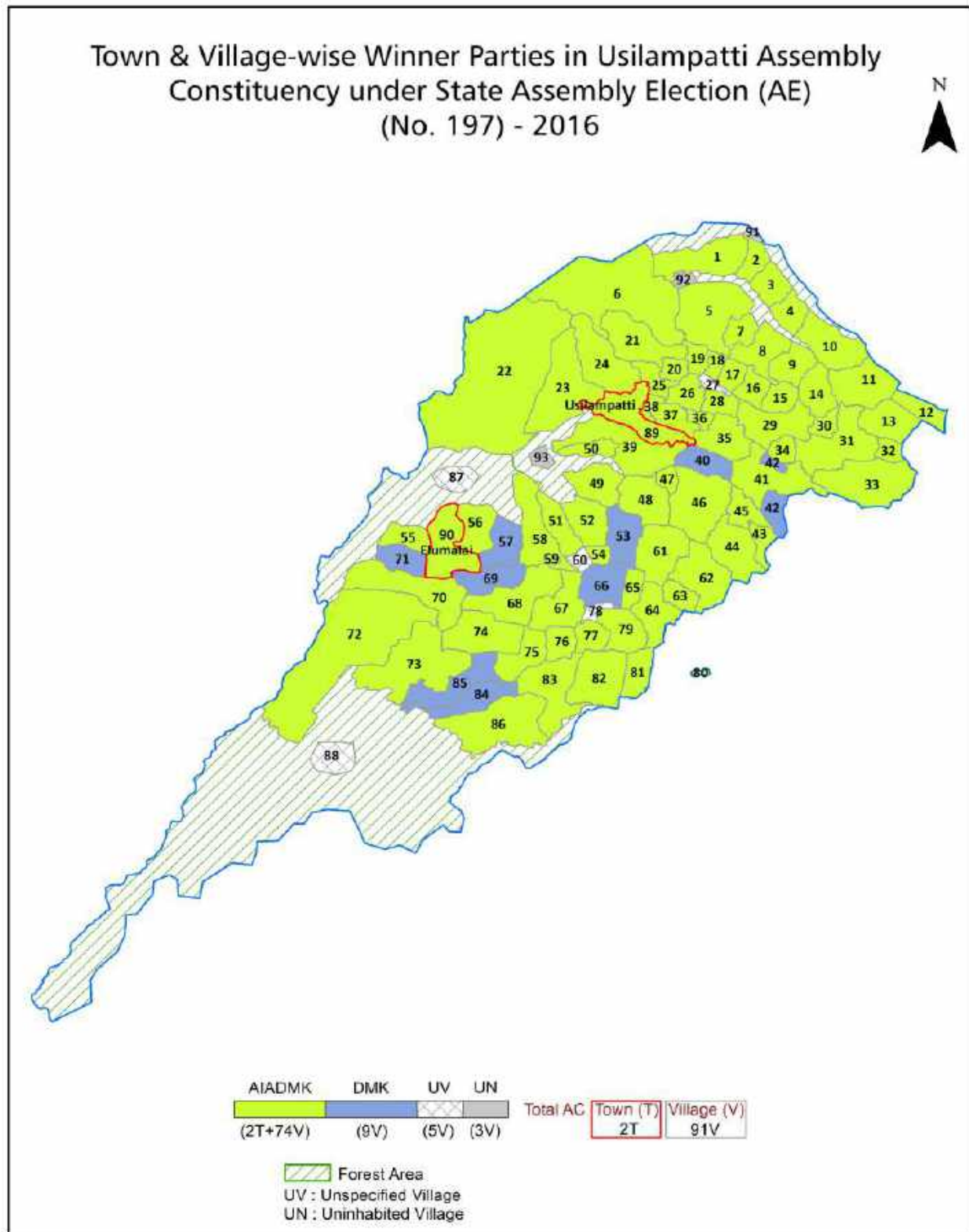
All rights reserved. No part of this book may be reproduced, stored in a retrieval system or transmitted in any form or by any means, mechanical photocopying, photographing, scanning, recording or otherwise without the prior written permission of the publisher. Please refer to Disclaimer at page no. 272 for the use of this publication.

Printed in India

Contents

No.	Particulars	Page No.
	Introduction	
1	Assembly Constituency - (Vidhan Sabha) at a Glance Features of Assembly as per Delimitation Commission of India (2008)	1-2
	Location and Political Maps	
2	Location Map Boundaries of Assembly Constituency - (Vidhan Sabha in District Boundaries of Assembly Constituency under Parliamentary Constituency - (Lok Sabha) Town & Village-wise Winner Parties- 2024, 2021, 2019, 2016, 2014, 2011 and 2009	3-11
	Administrative Setup (2011)	
3	District Sub-district Towns Villages Inhabited Villages Uninhabited Villages Village Panchayat Intermediate Panchayat	12-18
	Demographics (2011)	
4	Population Households Rural/Urban Population Towns and Villages by Population Size Sex Ratio (Total & 0-6 Years) Religious Population Social Population Literacy Rate	19-20
	Electoral Features	
5	Important Dates of Last Elections Held Electors by Gender Service Electors Voters Voters Turnout Polling Stations & Average Number of Electors per Polling Station Electors by Age Group Present Elected Representatives	21-26
	Historical Summary Election Results	
6	Vote Share of Major Parties Winning Margin (Number & Percentage Polarity of Parties Summary Result of Assembly Segment of Parliamentary Elections 2024, 2019, 2014, 2009, 2004 and 1999 Summary Result of Assembly Elections 2021, 2016, 2011, 2006, 2001, 1996, 1991, 1989, 1984, 1980, 1977, 1971 and 1967	27-48
	Polling Station Level Election Results	
7	Name and Number of Polling Station 2024, 2021, 2019, 2016, 2014, 2011 and 2009 Polling Station-wise Electors, Voters & Voters Turnout 2024, 2021, 2019, 2016, 2014, 2011 and 2009 Polling Station wise Elections Results 2024, 2021, 2019, 2016, 2014, 2011 and 2009	49-251
	Share of Assembly Constituency	
8	Share of Assembly Constituency - (Vidhan Sabha) in State, District and Parliamentary Constituency - (Lok Sabha)	252
	Socio-Economic Amenities (2011)	
9	Access to Administrative Units Agricultural, Manufacturing and Industrial Commodities Demographic Indicators Education Health & Manpower Drinking Water Supply Sanitation Entertainment and Recreations Infrastructure Power Food Allocation Distribution and Marketing of Agriculture Commodities Infrastructure Transport and Road Infrastructure Communication Banking and Financial Services Land Use Irrigation Source	253-268
10	Abbreviation & Sources	269-271
11	Disclaimer	272

Location & Political Map



Administrative Setup

List of Village Panchayat & Intermediate Panchayat (Block) Name - 2011

Village Name	Village Panchayat Name	Intermediate Panchayat Name
Adikaripatti	Adikaripatti	Sedapatti
Allikundam	Allikundam	Usilampatti
Ariyapatti	Ariyapatti	Chellampatti
Attipatti	Attipatti , Palaiyur	Sedapatti
Avalaseri	Adikaripatti	Sedapatti
Ayanmethupatti	Vagurani	Usilampatti
Ayyanarkulam	Ayyanarkulam	Chellampatti
Boodipuram	Boodipuram	Chellampatti
Chinnakattalai	Chinnakattalai	Sedapatti
Doddappanaickanur	Doddappanaickanur	Usilampatti
E. Kottaipatti	E.Kottaipatti	Sedapatti
Elumalai RF	Peraiyampatti	Sedapatti
Eramarpatti	Erumarpatti	Usilampatti
Eravarpatti	Eravarpatti	Chellampatti
Jambalapuram	Sedapatti	Sedapatti
Jothilnaickanur	Jothilnaickanur	Usilampatti
Jothimanickam	Kodikulam	Chellampatti
Kalappanpatti	Kalappanpatti	Sedapatti
Kalluthu	Kalluthu	Usilampatti
Kannanur	Kannanur	Chellampatti
Karumathur	Karumathur, Nattarmangalam	Chellampatti
Kattakaruppanpatti	Kattakaruppanpatti	Chellampatti
Keeripatti	Keeripatti	Usilampatti
Kethuvarpatti	Kethuvarpatti	Sedapatti
Kodikulam	Kodikulam	Chellampatti
Kovilankulam	Kovilankulam	Chellampatti
Krishnapuram	Anaiyur Pudupatti	Chellampatti
Kudippatti	Vandapuli, Kudippatti	Sedapatti
Kudiseri	Kudiseri	Sedapatti

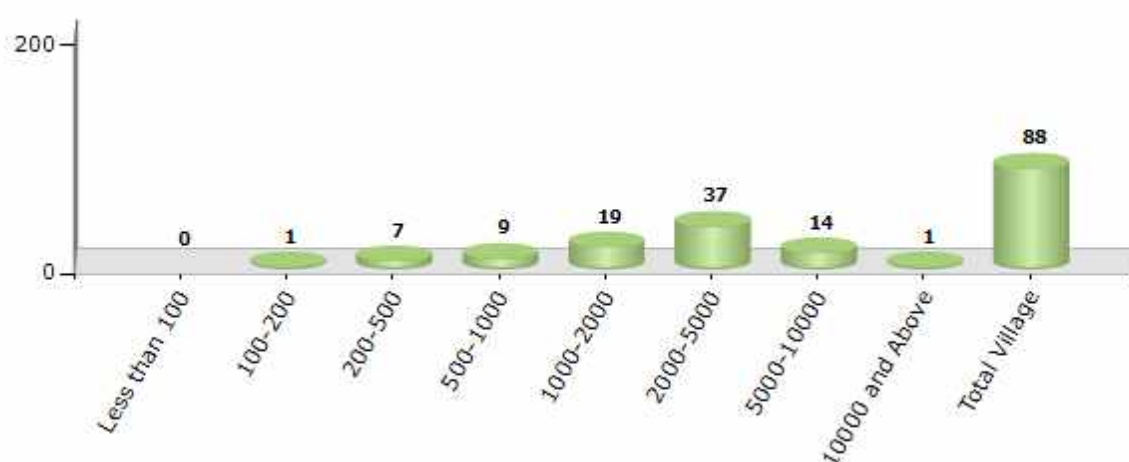
Contd....

Demographics

Number of Villages by Population Size - 2011

Less than 100	100-200	200-500	500-1000	1000-2000	2000-5000	5000-10000	10000 and Above	Total Village
0	1	7	9	19	37	14	1	88

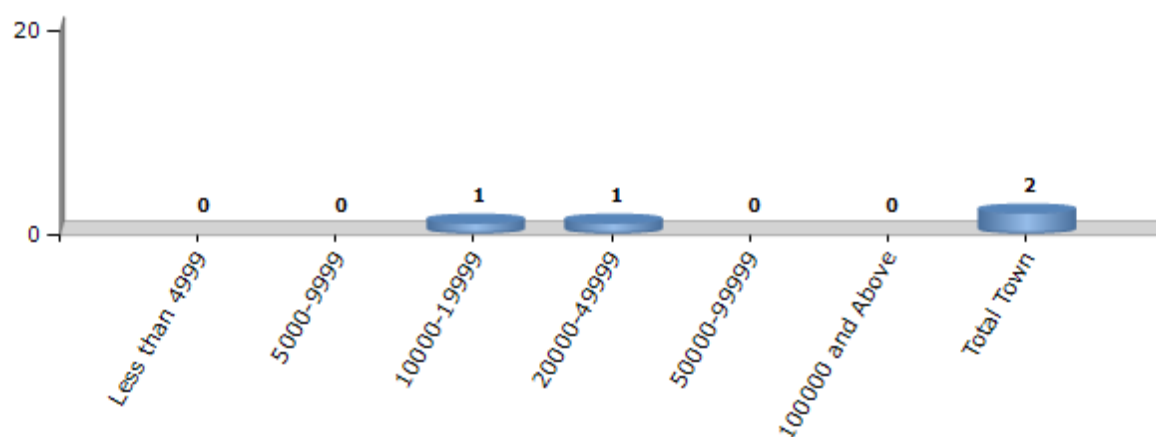
Number of Villages by Population Size - 2011



Number of Towns by Population Size - 2011

Less than 4999	5000-9999	10000-19999	20000-49999	50000-99999	100000 and Above	Total Town
0	0	1	1	0	0	2

Number of Towns by Population Size - 2011



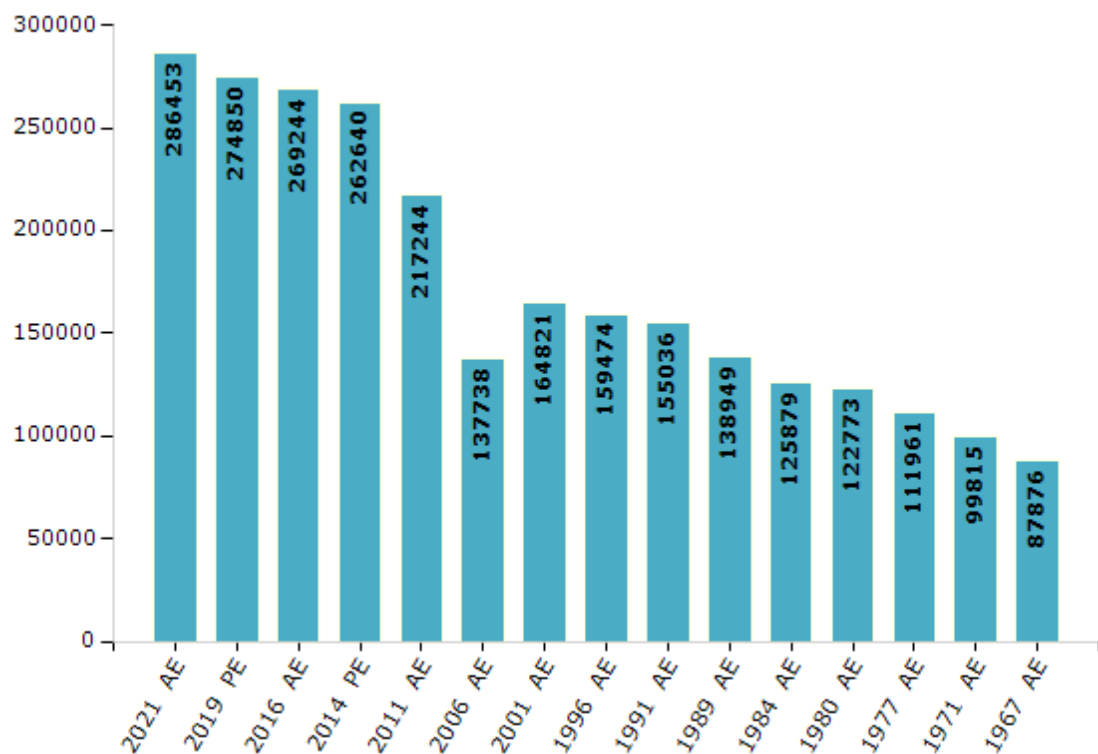
Electoral Features

Electors by Male & Female

Year	Male	Female	Others	Total
2021 AE	144261	142182	10	286453
2019 PE	138897	135943	10	274850
2016 AE	135715	133526	3	269244
2014 PE	132659	129976	5	262640
2011 AE	109928	107316	-	217244
2009 PE	-	-	-	-
2006 AE	67639	70099	-	137738
2004 PE	-	-	-	-
2001 AE	81527	83294	-	164821

Year	Male	Female	Others	Total
1999 PE	-	-	-	-
1996 AE	79700	79774	-	159474
1991 AE	76972	78064	-	155036
1989 AE	69360	69589	-	138949
1984 AE	62109	63770	-	125879
1980 AE	60223	62550	-	122773
1977 AE	54949	57012	-	111961
1971 AE	48646	51169	-	99815
1967 AE	-	-	-	87876

Number of Electors



Note : AE : Assembly Election, PE : Assembly Segment of Parliamentary Election

Historical Summary Election Results

Summary Result of Assembly Election - 2016

Candidate Name	Party	Votes	Votes %
Neethipathi P	AIADMK	106349	52.88
Ilamakezhan.K	DMK	73443	36.52
Baskara Sethupathy.A	MDMK	7079	3.52
Kathiravan P.V	AIFB	5136	2.55
Sangli.M	BJP	2860	1.42
Iyndhu Kovilan.G	NTK	1437	0.71
Mahendran M	BSP	939	0.47
Murugan.T	PMK	619	0.31
Nethaji C	IND	457	0.23
Jeyakumar S	TMMK	255	0.13
Nagamani N	IND	254	0.13
Rajuthevar M	IND	243	0.12
Thangam A	IND	199	0.1
Ranjitham P	LJP	96	0.05
Senthil Murugan S	IND	88	0.04
	NOTA	1672	0.83

Polling Station Level Election Results

Number and Name of Polling Stations (PS) (2021)

Number of Polling Stations	Name of Polling Stations	Number of Polling Stations	Name of Polling Stations
1	Pt. Union Middle School Eastern Side North Asbestos Roofed Building Uthappanaickanur- 625537	15	Govt. Kallar Ele. School East New R.C.C Building Koppilipatti - 625537
1A	Pt. Union Middle School Eastern Side North Asbestos Roofed Building Uthappanaickanur- 625537	16	Pt. Union Primary School North Building Thimmanatham
2	Pt. Union Middle School Eastern Side North Asbestos Roofed Building Uthappanaickanur- 625537	17	Govt. Kallar Ele. School Duraisampuram Pudur - 625537
2A	Pt. Union Middle School Eastern Side North Asbestos Roofed Building Uthappanaickanur- 625537	18	Govt. Kallar Middle School Old Tiled North Building Suliochanpatti - 625537
3	Pt. Union Middle School South West Terraced Building Uthappanaickanur - 625537	18A	Govt. Kallar Middle School Old Tiled North Building Suliochanpatti - 625537
3A	Pt. Union Middle School South West Terraced Building Uthappanaickanur - 625537	19	Govt Kallar High School South Building- East Portion Suliochanpatti - 625537.
4	Pt. Union Middle School East Side New Addl. Building Uthappanaickanur - 625537	20	Govt Kallar High School South Building West Portion Suliochanpatti - 625537.
4A	Pt. Union Middle School East Side New Addl. Building Uthappanaickanur - 625537	21	Govt. Kallar Middle School New Building South Side Keeripatti - 625532
5	Pt. Union Ele. School Addl. R.C.C Building Facing West U.Pudukottai - 625537	22	Govt. Kallar Middle School North Portion Building Keeripatti - 625532
6	Pt. Union Ele. School Addl. R.C.C. Building Mondikundu - 625537	23	Govt Kallar Middle School South New Building Meikkilarpatti - 625532
7	Pt. Union Elementary School Thathampatti - 625537	24	Govt Kallar Middle. School New Building South Side Meikkilarpatti - 625532
8	Pt. Union Middle. School Tiled Building Naduppatti - 625537	25	Govt. Kallar Middle School New Building North Side Meikkilarpatti-625532.
9	Govt. Kallar Ele. School West Tiled Building North Side Melavellamalaipatti - 625537	26	Govt. Kallar Ele. School Northern Side M.Pudupatti - 625532
10	Govt. Kallar Ele. School North Side Asbestos Building Melavellamalaipatti - 625537	27	Govt. Kallar Ele. School Southern Side M.Pudupatti - 625532
10A	Govt. Kallar Ele. School North Side Asbestos Building Melavellamalaipatti - 625537	28	Panchayat Union Middle School South Building Seemanoothu - 625532
11	Govt Kallar Hr.Sec. School North Building K.Perumalpatti-625537	29	Govt. Kallar Ele. School North Side Meiyampatti - 625532
11A	Govt Kallar Hr.Sec. School North Building K.Perumalpatti-625537	30	Govt. Kallar Ele. School South Side Meiyampatti - 625532
12	Govt. Kallar Middle School New Building South Side (Kalluthu)	31	Govt. Kallar Ele. School Nalliveeranpatti - 625532
13	Govt. Kallar Middle School New Building North Side Kalluthu	31A	Govt. Kallar Ele. School Nalliveeranpatti - 625532
14	Pt. Union Ele. School Mahalingapuram - 625537	32	Panchayat Union Elementary School Main Building North Side Tiled Roofed Facing East Thottappanaickanur- 625532
14A	Pt. Union Ele. School Mahalingapuram - 625537	32A	Panchayat Union Elementary School Main Building North Side Tiled Roofed Facing East Thottappanaickanur- 625532

Contd....

Polling Station Level Election Results

Polling Station-wise Votes Secured by Overall Top Five Parties in Usilampatti Assembly in Assembly Election (AE) under Theni Parliamentary Constituency in Tamil Nadu (2021)

Number of Polling Station	Winner - Ayyappan P (AIADMK)	Runner-up - Kathiravan P V (DMK)	3rd - Mahendran I (AMMKMNKZ)	4th - Iyndhu kovilan G (NTK)	5th - Arumugam K (IND)	NOTA	Other	Total Votes Secured
28	158	410	187	89	3	2	21	870
29	232	163	220	42	4	0	6	667
30	118	110	230	60	3	2	8	531
31	81	165	142	59	1	3	12	463
31A	112	225	137	21	1	0	14	510
32	166	155	53	27	1	4	30	436
32A	195	163	60	13	0	1	20	452
33	171	246	113	26	2	9	12	579
34	91	261	88	22	4	5	14	485
35	178	307	129	29	4	4	10	661
36	142	123	105	50	0	3	2	425
36A	157	124	91	25	4	5	11	417
37	240	214	230	77	3	2	13	779
38A	209	135	77	29	1	2	1	454
38	161	152	67	54	3	2	3	442
39	163	104	147	17	2	3	13	449
40	283	146	70	82	2	4	9	596
41	196	126	135	65	4	1	20	547
42	170	167	228	56	7	4	6	638
43	155	239	198	41	6	5	6	650
44A	109	104	226	15	1	0	7	462
44	97	98	216	42	0	1	9	463
45	130	262	123	29	0	2	4	550
46	164	208	76	44	5	7	9	513
47	263	135	135	37	4	4	6	584
48	196	231	250	43	4	3	15	742
49	126	128	237	16	1	3	7	518
50	213	126	107	87	17	3	9	562
51	188	182	167	59	1	4	9	610
52	247	101	102	68	4	8	5	535
53	291	118	299	37	7	4	7	763
54	148	124	329	56	12	3	9	681
55	184	172	107	60	11	4	8	546
56	112	127	111	55	12	5	0	422
56A	189	122	84	29	13	3	1	441

Contd....

Polling Station Level Election Results

Winner, Runner-up and 3rd Party Position & Winning Margin According to Polling Stations in Usilampatti Assembly in Assembly Election (AE) under Theni Parliamentary Constituency in Tamil Nadu (2021)

Polling Station Number	Winner Party	Winner Votes (%)	Runner-up Party	Runner-up Votes (%)	Winning Margin Votes (%)	Third Party	Third Party Votes (%)	Other Votes (%)
57	DMK	245 (41.25)	AMMKMNKZ	166 (27.95)	79 (13.3)	AIADMK	106 (17.85)	77 (12.96)
58	DMK	142 (30.47)	AMMKMNKZ	115 (24.68)	27 (5.79)	AIADMK	109 (23.39)	100 (21.46)
58A	AIADMK	162 (35.84)	DMK	144 (31.86)	18 (3.98)	AMMKMNKZ	91 (20.13)	55 (12.17)
59	AMMKMNKZ	129 (32.82)	DMK	112 (28.5)	17 (4.32)	AIADMK	96 (24.43)	56 (14.25)
59A	DMK	166 (40)	AIADMK	116 (27.95)	50 (12.05)	AMMKMNKZ	108 (26.02)	25 (6.02)
60	AMMKMNKZ	166 (34.8)	DMK	155 (32.49)	11 (2.31)	AIADMK	105 (22.01)	51 (10.69)
60A	DMK	206 (38.72)	AIADMK	166 (31.2)	40 (7.52)	AMMKMNKZ	125 (23.5)	35 (6.58)
61	AMMKMNKZ	136 (37.47)	DMK	82 (22.59)	54 (14.88)	AIADMK	80 (22.04)	65 (17.91)
61A	AMMKMNKZ	111 (30)	AIADMK	98 (26.49)	13 (3.51)	DMK	95 (25.68)	66 (17.84)
62	DMK	178 (41.69)	AMMKMNKZ	135 (31.62)	43 (10.07)	AIADMK	64 (14.99)	50 (11.71)
62A	DMK	171 (42.96)	AMMKMNKZ	127 (31.91)	44 (11.05)	AIADMK	58 (14.57)	42 (10.55)
63	AMMKMNKZ	256 (52.03)	DMK	112 (22.76)	144 (29.27)	AIADMK	68 (13.82)	56 (11.38)
64	AMMKMNKZ	228 (52.53)	DMK	100 (23.04)	128 (29.49)	AIADMK	59 (13.59)	47 (10.83)
65	AMMKMNKZ	205 (44.96)	AIADMK	121 (26.54)	84 (18.42)	DMK	76 (16.67)	54 (11.84)
66	AMMKMNKZ	350 (48.34)	AIADMK	178 (24.59)	172 (23.75)	DMK	120 (16.57)	76 (10.5)
67	AMMKMNKZ	179 (37.21)	DMK	128 (26.61)	51 (10.6)	AIADMK	98 (20.37)	76 (15.8)
68	AMMKMNKZ	189 (44.06)	AIADMK	101 (23.54)	88 (20.52)	DMK	94 (21.91)	45 (10.49)
68A	AMMKMNKZ	167 (37.03)	AIADMK	128 (28.38)	39 (8.65)	DMK	120 (26.61)	36 (7.98)
69	AMMKMNKZ	146 (34.27)	AIADMK	125 (29.34)	21 (4.93)	DMK	88 (20.66)	67 (15.73)
69A	AIADMK	151 (32.75)	AMMKMNKZ	134 (29.07)	17 (3.68)	DMK	122 (26.46)	54 (11.71)
70	AIADMK	161 (31.08)	AMMKMNKZ	154 (29.73)	7 (1.35)	DMK	125 (24.13)	78 (15.06)
71	DMK	225 (38.33)	AIADMK	157 (26.75)	68 (11.58)	AMMKMNKZ	155 (26.41)	50 (8.52)
72	AMMKMNKZ	220 (34.21)	AIADMK	212 (32.97)	8 (1.24)	DMK	141 (21.93)	70 (10.89)
73	AMMKMNKZ	181 (43.1)	AIADMK	125 (29.76)	56 (13.34)	DMK	66 (15.71)	48 (11.43)
73A	AIADMK	217 (47.59)	AMMKMNKZ	117 (25.66)	100 (21.93)	DMK	90 (19.74)	32 (7.02)
74	AIADMK	159 (34.05)	AMMKMNKZ	140 (29.98)	19 (4.07)	DMK	114 (24.41)	54 (11.56)
75	AIADMK	275 (43.86)	AMMKMNKZ	158 (25.2)	117 (18.66)	DMK	131 (20.89)	63 (10.05)
76	AMMKMNKZ	149 (38.3)	AIADMK	98 (25.19)	51 (13.11)	DMK	83 (21.34)	59 (15.17)
76A	AIADMK	151 (35.87)	AMMKMNKZ	122 (28.98)	29 (6.89)	DMK	98 (23.28)	50 (11.88)
77	AIADMK	153 (35.25)	DMK	117 (26.96)	36 (8.29)	AMMKMNKZ	111 (25.58)	53 (12.21)
78	AMMKMNKZ	156 (34.59)	AIADMK	119 (26.39)	37 (8.2)	DMK	104 (23.06)	72 (15.96)
78A	AIADMK	164 (36.12)	AMMKMNKZ	131 (28.85)	33 (7.27)	DMK	118 (25.99)	41 (9.03)
79	AIADMK	241 (35.6)	AMMKMNKZ	217 (32.05)	24 (3.55)	DMK	158 (23.34)	61 (9.01)
80	AMMKMNKZ	257 (38.94)	AIADMK	236 (35.76)	21 (3.18)	DMK	129 (19.55)	38 (5.76)
81	AMMKMNKZ	177 (38.31)	DMK	164 (35.5)	13 (2.81)	AIADMK	69 (14.94)	52 (11.26)

Contd....

Socio-Economic Amenities - Rural

Access to Education Facilities

Particulars	Number of Villages (% of Population)				
	Available	Not Available	If Not Available (Distance of Nearest Facility)		
			A	B	C
Govt. Primary School	83 (99)	5 (1)	4 (1)	1 (0)	0 (0)
Private Primary School	14 (27)	74 (73)	0 (0)	0 (0)	0 (0)
Govt. Middle School	58 (85)	30 (15)	26 (13)	3 (1)	0 (0)
Private Middle School	7 (14)	81 (86)	0 (0)	0 (0)	0 (0)
Govt. Secondary School	24 (45)	64 (55)	50 (44)	14 (11)	0 (0)
Private Secondary School	5 (12)	83 (88)	0 (0)	0 (0)	0 (0)
Govt. Senior Secondary School	15 (28)	73 (72)	46 (43)	23 (24)	2 (1)
Private Senior Secondary School	3 (8)	85 (92)	0 (0)	2 (4)	0 (0)
Govt. Arts and Science Degree College	2 (3)	86 (97)	10 (12)	19 (25)	34 (36)
Private Arts and Science Degree College	0 (0)	88 (100)	1 (2)	10 (9)	12 (13)
Govt. Engineering College	0 (0)	88 (100)	0 (0)	0 (0)	21 (24)
Private Engineering College	0 (0)	88 (100)	1 (4)	2 (6)	64 (67)
Govt. Medicine College	0 (0)	88 (100)	0 (0)	1 (4)	87 (96)
Private Medicine College	0 (0)	88 (100)	0 (0)	0 (0)	0 (0)
Govt. Management Institute	1 (3)	87 (97)	5 (6)	8 (11)	19 (21)
Private Management Institute	0 (0)	88 (100)	1 (4)	3 (6)	51 (50)
Govt. Polytechnic	0 (0)	88 (100)	0 (0)	1 (2)	20 (23)
Private Polytechnic	2 (5)	86 (95)	5 (11)	13 (17)	47 (43)
Govt. Vocational Training School/ITI	0 (0)	88 (100)	2 (2)	5 (11)	40 (45)
Private Vocational Training School/ITI	1 (1)	87 (99)	2 (2)	16 (16)	22 (24)
Govt. Non Formal Training Centre	83 (99)	5 (1)	4 (1)	1 (0)	0 (0)
Private Non Formal Training Centre	0 (0)	88 (100)	0 (0)	0 (0)	0 (0)
Govt. School For Disabled	0 (0)	88 (100)	0 (0)	0 (0)	65 (72)
Private School For Disabled	0 (0)	88 (100)	0 (0)	0 (0)	23 (28)
Government Others	0 (0)	88 (100)	0 (0)	0 (0)	0 (0)
Private Others	0 (0)	88 (100)	0 (0)	0 (0)	0 (0)

Note : Distance A : Less than 5 km; B : Between 5-10 km; C : 10+ km.; Source : Data Analysis is based on 2011 Census.

DISCLAIMER

The Terms of Use and Disclaimer of Datanet India Private Limited (hereinafter referred to as "Datanet") for use of this analysis report of **Usilampatti Assembly Constituency (Usilampatti Vidhan Sabha)** :-

1. **Assembly Factbook™** is a Registered Trade Mark owned by Datanet.
2. All the maps are sketched and graphical representation only and have not been drawn to the scale and also not to represent the actual geographical area or boundary of the unit.
3. The data for the aforesaid analysis is based on authentic sources and has been culled from the various publications of Census, CSO and NSSO for district and block level data, various central and state government departments, Central & State Elections Commissions and the concerned Returning Officers' releases, Electoral Rolls, Election results and allied publications, internal assessment, surveys, estimates and analysis. Therefore, certain adjustment of data at micro level may have been done to arrive closer to the macro data.
4. Data have been provided on an "As Is" and "As AVAILABLE" basis
5. The colours shown in the maps or diagram and charts of a particular party, alliance or AC are indicative and do not represent them.
6. This publication which includes maps, sheets, graphs and data would be the property under copyright of Datanet only. The user may use these for its internal study, analysis and research purposes. It's public display, re-selling or any commercial uses by the user are not allowed.
7. Datanet has taken due care and caution in compilation and processing of data and allied information, but does not guarantee the accuracy, adequacy or completeness of any information/analysis and will be not responsible for any errors or omissions or for the results obtained from the use of such information/analysis.
8. All the contents for the publication have been culled from various authentic sources and Datanet reasonably believes such sources to be reliable, but does not make any representations, express or implied as to the accuracy or fitness of use of such information. The information or contents of the information/analysis do not constitute advice and should not be relied upon in making (or refraining from making) any decision. Any reliance placed upon the information provided by Datanet is the sole responsibility and strictly at the user's risk.
9. In no event will Datanet be liable for any damages (including, without limitation, damages for loss of business projects, or loss of profits) arising in contract, tort or otherwise from the use of or inability to use any of its contents, or from any action taken (or refrained from being taken) as a result of using the analysis or any of its contents. Datanet its directors, owners, editors, officials, employees, distributor and agents or any associate will not be liable for any errors in the information contained or any consequences arising from the use of the contents of the provided information/analysis.
10. If any provision of these terms and conditions is held invalid or illegal or unenforceable for any reason by any court of competent jurisdiction, such provision shall be severed and the remainder of provisions of the terms and conditions shall continue in full force and effect as if the Term of Use had been executed with the invalid, illegal or unenforceable provision eliminated.
11. If there are any discrepancies in the information provided, please bring it to attention of Datanet for suitable rectification measures.

Buy Online This Complete Book At
Datanet India eBooks Store

www.indiastatpublications.com

or go directly at

[http://www.indiastatpublications.com/
Assembly_factbook/Tamil_Nadu/Theni/ Usilampatti](http://www.indiastatpublications.com/Assembly_factbook/Tamil_Nadu/Theni/Usilampatti)

 **india**stat**elections**

