



Tamil Nadu

# Assembly Factbook™

Srivaikuntam Assembly Constituency



Key Electoral Data of Srivaikuntam  
Assembly Constituency (Vidhan Sabha)



india**stat**publications

Tamil Nadu

# **Assembly Factbook™**

Srivaikuntam Assembly Constituency



Srivaikuntam Vidhan Sabha

## **Editor & Director**

Dr. R.K. Thukral

## **Research Editor**

Dr. Shafeeq Rahman

## **Compiled, Researched and Published by Datanet India Pvt. Ltd.**

D-100, 1st Floor,

Okhla Industrial Area, Phase-I,  
New Delhi- 110020.

Ph.: 91-11- 43580781-84

Email : support@indiastatpublications.com

Website : www.indiastatelections.com

## **Online Book Store :**

www.indiastatpublications.com

**Report No. :** AFB/TN-216-0125

**ISBN :** 978-93-5313-861-5

**First Edition :** January, 2018

**Eighth Updated Edition :** January, 2025

**Price :** Rs. 11500/-

US\$ 310

**© Datanet India Pvt. Ltd.**

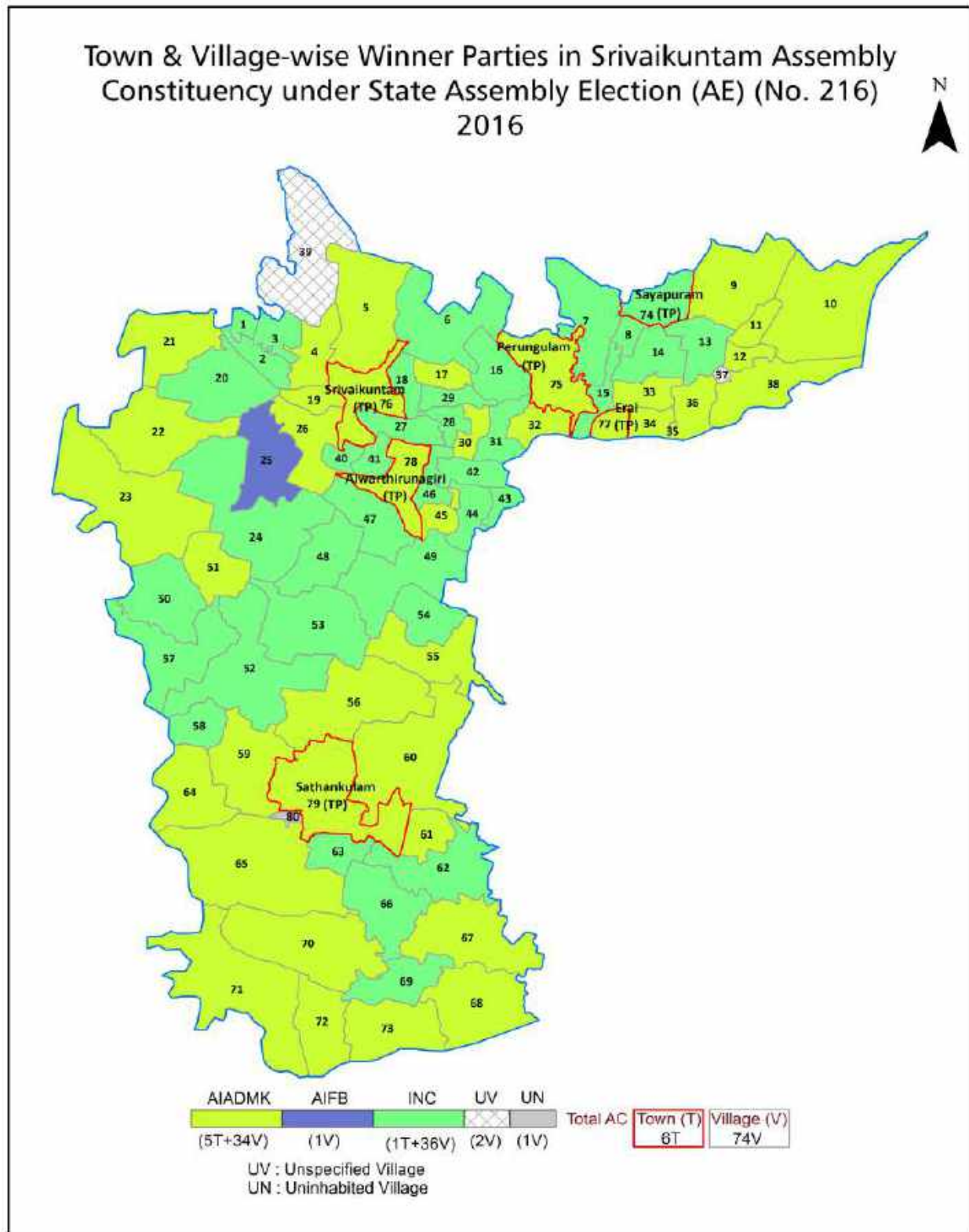
All rights reserved. No part of this book may be reproduced, stored in a retrieval system or transmitted in any form or by any means, mechanical photocopying, photographing, scanning, recording or otherwise without the prior written permission of the publisher. Please refer to Disclaimer at page no. 235 for the use of this publication.

Printed in India

## Contents

No.	Particulars	Page No.
	<b>Introduction</b>	
1	Assembly Constituency - (Vidhan Sabha) at a Glance   Features of Assembly as per Delimitation Commission of India (2008)	1-2
	<b>Location and Political Maps</b>	
2	Location Map   Boundaries of Assembly Constituency - (Vidhan Sabha) in District   Boundaries of Assembly Constituency under Parliamentary Constituency - (Lok Sabha)   Town & Village-wise Winner Parties- 2024, 2021, 2019, 2016, 2014, 2011 and 2009	3-11
	<b>Administrative Setup (2011)</b>	
3	District   Sub-district   Towns   Villages   Inhabited Villages   Uninhabited Villages   Village Panchayat   Intermediate Panchayat	12-16
	<b>Demographics (2011)</b>	
4	Population   Households   Rural/Urban Population   Towns and Villages by Population Size   Sex Ratio (Total & 0-6 Years)   Religious Population   Social Population   Literacy Rate	17-18
	<b>Electoral Features</b>	
5	Important Dates of Last Elections Held   Electors by Gender   Service Electors   Voters   Voters Turnout   Polling Stations & Average Number of Electors per Polling Station   Electors by Age Group   Present Elected Representatives	19-24
	<b>Historical Summary Election Results</b>	
6	Vote Share of Major Parties   Winning Margin (Number & Percentage)   Polarity of Parties   Summary Result of Assembly Segment of Parliamentary Elections 2024, 2019, 2014, 2009, 2004 and 1999   Summary Result of Assembly Elections 2021, 2016, 2011, 2006, 2001, 1996, 1991, 1989, 1984, 1980, 1977, 1971 and 1967	25-47
	<b>Polling Station Level Election Results</b>	
7	Name and Number of Polling Station 2024, 2021, 2019, 2016, 2014, 2011 and 2009   Polling Station-wise Electors, Voters & Voters Turnout 2024, 2021, 2019, 2016, 2014, 2011 and 2009   Polling Station wise Elections Results 2024, 2021, 2019, 2016, 2014, 2011 and 2009	48-214
	<b>Share of Assembly Constituency</b>	
8	Share of Assembly Constituency - (Vidhan Sabha) in State, District and Parliamentary Constituency - (Lok Sabha)	215
	<b>Socio-Economic Amenities (2011)</b>	
9	Access to Administrative Units   Agricultural, Manufacturing and Industrial Commodities   Demographic Indicators   Education   Health & Manpower   Drinking Water Supply   Sanitation   Entertainment and Recreations Infrastructure   Power   Food Allocation Distribution and Marketing of Agriculture Commodities Infrastructure   Transport and Road Infrastructure   Communication   Banking and Financial Services   Land Use   Irrigation Source	216-231
10	<b>Abbreviation &amp; Sources</b>	232-234
11	<b>Disclaimer</b>	235

## Location & Political Map





## Administrative Setup

### List of Village Panchayat & Intermediate Panchayat (Block) Name - 2011

Village Name	Village Panchayat Name	Intermediate Panchayat Name
Agaram	Agaram	Srivaikundam
Alagiamanavalapuram	Alagiamanavalapuram	Alwarthirunagari
Alwarkarkulam	Alwarkarkulam	Karungulam
Arampannai	Arampannai	Karungulam
Arasoor I	Arasoor	Sathankulam
Arasoor II	Arasoor	Sathankulam
Arumugamangalam	Arumugamangalam	Srivaikundam
Athinathapuram	Athinathapuram	Alwarthirunagari
Cherakulam	Cherakulam , Ramanujampudur	Karungulam
Eluvaraimukki	Eluvaraimukki	Sathankulam
Iruvappapuram	Kovankadu	Srivaikundam
Kadayanodai	Kadayanodai	Alwarthirunagari
Kalvay	Kalvay	Karungulam
Karungadal	Karungadal	Alwarthirunagari
Karungulam	Karungulam , Thathankulam	Karungulam
Kattarimangalam	Kattarimangalam	Alwarthirunagari
Kilpidagai Kasba	Kilpidagai Kasba	Srivaikundam
Kilpidagai Varadarajapuram	Kilpidagai Varadarajapuram	Srivaikundam
KilpidagaiAppankovil	Kilpidagaiappankovil	Srivaikundam
Kodungani	Korkai	Srivaikundam
Komaneri	Komaneri	Sathankulam
Kombankulam	Kombankulam	Sathankulam
Kommadikottai	Kommadikottai	Sathankulam
Kongarayankurichi	Kongarayankurichi	Karungulam
Korkai	Korkai , Umarikadu	Srivaikundam
Kottarakkurichi	Kottarakurichi , Soolaivaikkal	Srivaikundam
Kurippankulam	Kurippankulam	Alwarthirunagari
Malavarayanatham	Malavarayanatham	Alwarthirunagari
Mangalakkurichi	Mangalakkurichi	Srivaikundam

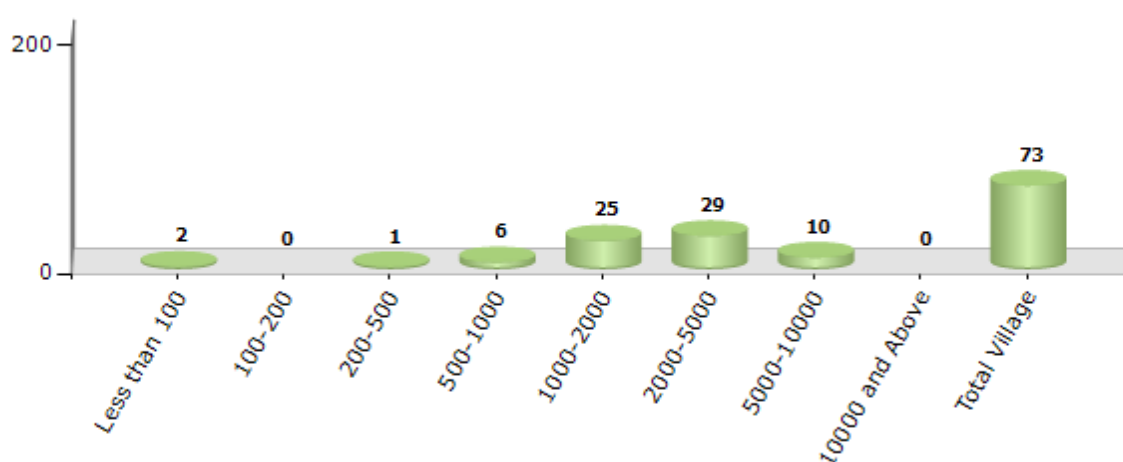
Contd....

## Demographics

### Number of Villages by Population Size - 2011

Less than 100	100-200	200-500	500-1000	1000-2000	2000-5000	5000-10000	10000 and Above	Total Village
2	0	1	6	25	29	10	0	73

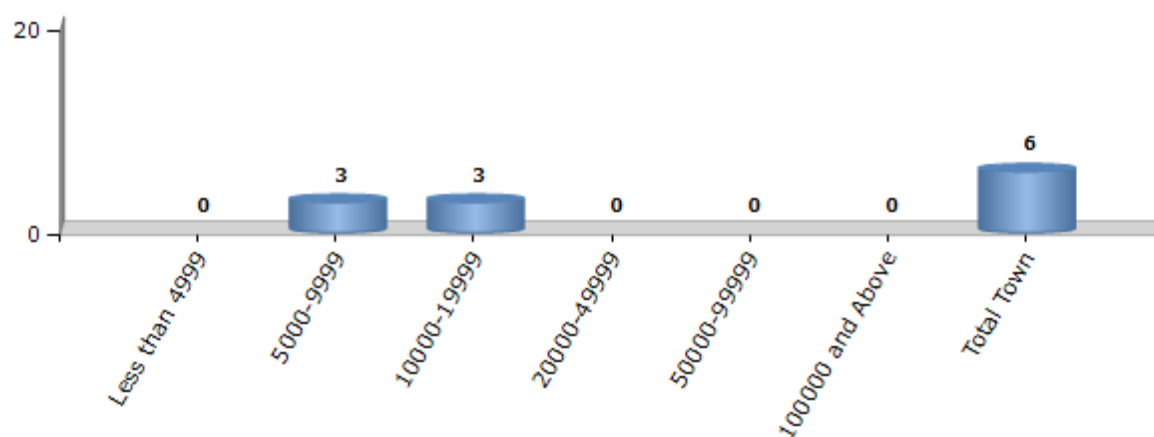
Number of Villages by Population Size - 2011



### Number of Towns by Population Size - 2011

Less than 4999	5000-9999	10000-19999	20000-49999	50000-99999	100000 and Above	Total Town
0	3	3	0	0	0	6

Number of Towns by Population Size - 2011

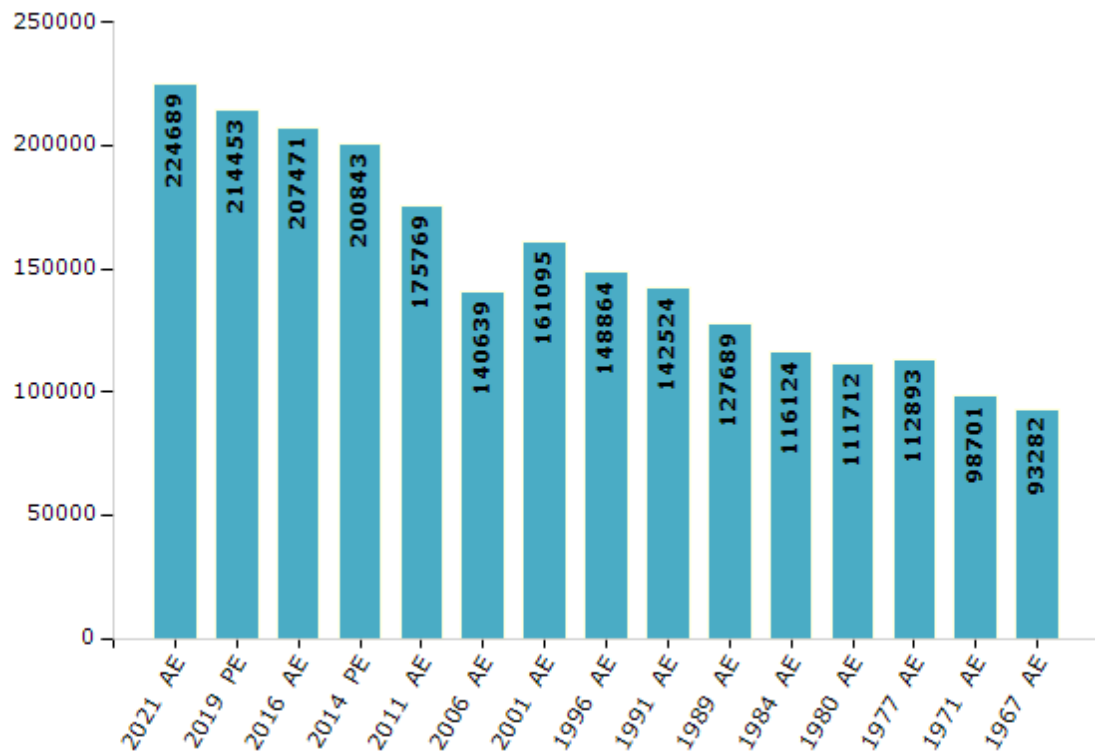


## Electoral Features

### Electors by Male & Female

Year	Male	Female	Others	Total	Year	Male	Female	Others	Total
2021 AE	110729	113956	4	224689	1999 PE	-	-	-	-
2019 PE	106218	108231	4	214453	1996 AE	73480	75384	-	148864
2016 AE	102732	104733	6	207471	1991 AE	69911	72613	-	142524
2014 PE	99681	101162	0	200843	1989 AE	62646	65043	-	127689
2011 AE	85634	90135	-	175769	1984 AE	56319	59805	-	116124
2009 PE	-	-	-	-	1980 AE	53948	57764	-	111712
2006 AE	68527	72112	-	140639	1977 AE	54295	58598	-	112893
2004 PE	-	-	-	-	1971 AE	47172	51529	-	98701
2001 AE	78863	82232	-	161095	1967 AE	-	-	-	93282

Number of Electors



**Note :** AE : Assembly Election, PE : Assembly Segment of Parliamentary Election



## Historical Summary Election Results

### Summary Result of Assembly Election - 2016

Candidate Name	Party	Votes	Votes %
Shanmuganathan S.P	AIADMK	65198	41.96
Rani Venkatesan V	INC	61667	39.69
Selvaraj S	BJP	9582	6.17
Vijayaseelan Sdr	TMC(M)	6203	3.99
Muthuramalingam S	AIFB	3764	2.42
Subbiah Pandian P	NTK	2113	1.36
Chithiraipandi U	IND	810	0.52
Lingaraj G	PMK	806	0.52
Esakki E	SHS	762	0.49
Samuel A S	IND	563	0.36
Deva Priyan C	TMMK	463	0.3
Lourdes S	IND	386	0.25
Vijaya C	IND	278	0.18
Masanam P	IND	260	0.17
Chinnadurai K	LJP	195	0.13
Ilayaraja A	IND	167	0.11
Vasantha Kumar R	YSP	166	0.11
Saravanan G	IND	147	0.09
Arjuna Thevar	IND	142	0.09
Renganathan N	GMI	121	0.08
Venugopal K	IND	116	0.07
	NOTA	1457	0.94

## Polling Station Level Election Results

### Number and Name of Polling Stations (PS) (2021)

Number of Polling Stations	Name of Polling Stations	Number of Polling Stations	Name of Polling Stations
1	Hindu Primary School North Building East Side Seidunganallur	17A	Panchayat Union Primary School North Building East Side Serakulam
2	Hindu Primary School West Building West Portion Facing South Seidunganallur	18	Panchayat Union Primary School, South East Building, Ramanujampudur
3	Hindu Primary School North Building West Side Seidunganallur	18A	Panchayat Union Primary School, South East Building, Ramanujampudur
4	St. Louis R. C. Primary School West Building South Portion Seidunganallur	19	Govt Primary School Vallakulam
4A	St. Louis R. C. Primary School West Building South Portion Seidunganallur	20	Panchayat Union Primary School Araserkulam
5	St.Louis R.C.Middle School South Portion North Side Facing East Seidunganallur	20A	Panchayat Union Primary School Araserkulam
5A	St.Louis R.C.Middle School South Portion North Side Facing East Seidunganallur	21	T. N. D. T. A. Primary School North Side Ariyanayagipuram
6	St.Louis R.C.Middle School South Portion Facing East Seidunganallur	21A	T. N. D. T. A. Primary School North Side Ariyanayagipuram
7	P. U. Primary School West Building Northern Side Ayyanarkulampatti	22	Government High School South Building Kalvai
8	Govt Hr, Sec School East New Building North Room, Karunkulam	22A	Government High School South Building Kalvai
9	Govt Hr, Sec, School North Building, Middle Portion, Karunkulam	23	Panchayat Union Primary School West Building Kalvai
9A	Govt Hr, Sec, School North Building, Middle Portion, Karunkulam	24	Panchayat Union Primary School West Building North Side Facing East Kalvai
10	Govt Hr Sec School North Building West Side Karunkulam	25	T. N. D. T. A. Primary School Velur Adichanallur
10A	Govt Hr Sec School North Building West Side Karunkulam	25A	T. N. D. T. A. Primary School Velur Adichanallur
11	Adi Dravidar Welfare Primary School, New Building North Portion, Puliangkulam	26	Govt Hr. Sec. School South Side Building Kongarayakuruchi
12	T. N. D. T. A. Middle School C. S. I . Church Complex East Building North Side Thathankulam	27	Govt Hr.Sec.School, Middle Block Facing North Kongarayakuruchi
13	Panchayat Union Primary School North Side Therku Karaseri	28	Govt Hr., Sec., School, Perarignar Anna Centenary Memorial Building, (Facing West) Kongarayakuruchi
14	Library Building Facing South, Kilakulam	29	Govt Higher Sec School, South New Building, East Portion, Kongarayakuruchi
15	Panchayat Union Middle School S. S. A. North Building West Portion Melaseriyanthur	30	Panchayat Union Middle School New Building (North Side ) Arampannai
16	Panchayat Union Primary School North Building West Side Serakulam	31	Icds Building Facing North Arampannai
17	Panchayat Union Primary School North Building East Side Serakulam	32	Panchayat Union Midle School New Building South Portion Arampannai

Contd....

## Polling Station Level Election Results

### Polling Station-wise Votes Secured by Overall Top Five Parties in Srivaikuntam Assembly in Assembly Election (AE) under Thoothukkudi Parliamentary Constituency in Tamil Nadu (2021)

Number of Polling Station	Winner - Oorvasi Amirtharaj .S (INC)	Runner-up - S.P.Shunmuganathan (AIADMK)	3rd - P.Subbiah Pandian (NTK)	4th - Eral S. Ramesh (AMMKMNKZ)	5th - R. Chandra Sekar (MNM)	NOTA	Other	Total Votes Secured
26	370	123	45	8	2	3	6	557
27	400	21	10	13	1	0	3	448
28	211	231	11	27	1	3	8	492
29	256	159	34	27	3	1	2	482
30	385	55	20	42	3	2	6	513
31	423	156	56	24	2	0	16	677
32	433	21	21	31	1	3	7	517
33	180	283	26	71	1	3	19	583
34	129	361	49	1	1	4	16	561
35	124	147	9	279	3	1	10	573
36	190	132	21	136	1	1	5	486
37	311	263	74	56	7	2	20	733
38	179	271	68	161	8	2	20	709
39	501	106	18	36	4	2	3	670
40	531	17	22	18	1	1	4	594
41	167	73	19	12	1	1	7	280
42	456	235	64	36	1	2	10	804
43A	251	211	65	0	0	1	7	535
43	194	188	97	3	5	1	6	494
44A	237	196	12	1	5	3	5	459
44	209	191	41	3	1	2	12	459
45	224	251	58	6	6	2	4	551
46	334	182	57	3	10	1	9	596
47A	323	80	23	4	3	1	4	438
47	313	75	41	12	3	2	2	448
48	439	245	87	2	7	2	2	784
49	371	280	86	6	17	4	6	770
50	211	215	30	7	3	2	4	472
51	241	287	80	4	4	2	7	625
52	187	188	48	2	5	2	4	436
53	178	219	56	7	9	4	4	477
53A	155	242	38	0	7	2	8	452
54	238	312	53	9	14	9	11	646
55	143	242	52	8	7	3	8	463
56	255	347	65	5	3	2	7	684

Contd....

## Polling Station Level Election Results

**Winner, Runner-up and 3rd Party Position & Winning Margin According to Polling Stations in Srivaikuntam Assembly in Assembly Election (AE) under Thoothukkudi Parliamentary Constituency in Tamil Nadu (2021)**

Polling Station Number	Winner Party	Winner Votes (%)	Runner-up Party	Runner-up Votes (%)	Winning Margin Votes (%)	Third Party	Third Party Votes (%)	Other Votes (%)
57	AIADMK	275 (52.99)	INC	194 (37.38)	81 (15.61)	NTK	33 (6.36)	17 (3.28)
58	AIADMK	252 (47.91)	INC	208 (39.54)	44 (8.37)	NTK	50 (9.51)	16 (3.04)
59	AIADMK	242 (47.73)	INC	177 (34.91)	65 (12.82)	NTK	58 (11.44)	30 (5.92)
60	INC	234 (45.44)	AIADMK	179 (34.76)	55 (10.68)	NTK	62 (12.04)	40 (7.77)
61	INC	280 (64.52)	AIADMK	80 (18.43)	200 (46.09)	NTK	59 (13.59)	15 (3.46)
62	INC	471 (60.85)	AIADMK	159 (20.54)	312 (40.31)	NTK	101 (13.05)	43 (5.56)
63	INC	177 (61.67)	AIADMK	64 (22.3)	113 (39.37)	NTK	19 (6.62)	27 (9.41)
64	AIADMK	301 (53.09)	INC	156 (27.51)	145 (25.58)	NTK	88 (15.52)	22 (3.88)
65	NV	NV (NV)	NV	NV (NV)	NV (NV)	NV	NV (NV)	NV (NV)
66	AIADMK	333 (46.12)	INC	295 (40.86)	38 (5.26)	NTK	62 (8.59)	32 (4.43)
67	AIADMK	270 (41.6)	INC	266 (40.99)	4 (0.61)	NTK	68 (10.48)	45 (6.93)
68	AIADMK	260 (47.53)	INC	224 (40.95)	36 (6.58)	NTK	40 (7.31)	23 (4.2)
69	INC	302 (45.21)	AIADMK	271 (40.57)	31 (4.64)	NTK	62 (9.28)	33 (4.94)
70	INC	308 (45.77)	AIADMK	276 (41.01)	32 (4.76)	NTK	48 (7.13)	41 (6.09)
71	INC	190 (39.01)	AIADMK	158 (32.44)	32 (6.57)	NTK	77 (15.81)	62 (12.73)
71A	INC	199 (46.06)	AIADMK	156 (36.11)	43 (9.95)	NTK	34 (7.87)	43 (9.95)
72	AIADMK	350 (46.17)	INC	320 (42.22)	30 (3.95)	NTK	68 (8.97)	20 (2.64)
73	AIADMK	359 (46.32)	INC	327 (42.19)	32 (4.13)	NTK	52 (6.71)	37 (4.77)
74	AIADMK	276 (48.51)	INC	201 (35.33)	75 (13.18)	NTK	68 (11.95)	24 (4.22)
75	INC	348 (48.2)	AIADMK	242 (33.52)	106 (14.68)	NTK	85 (11.77)	47 (6.51)
76	AIADMK	356 (53.13)	INC	226 (33.73)	130 (19.4)	NTK	40 (5.97)	48 (7.16)
77	AIADMK	409 (54.68)	INC	223 (29.81)	186 (24.87)	NTK	80 (10.7)	36 (4.81)
78	INC	352 (47.7)	AIADMK	298 (40.38)	54 (7.32)	NTK	51 (6.91)	37 (5.01)
79	INC	329 (49.85)	AIADMK	235 (35.61)	94 (14.24)	NTK	70 (10.61)	26 (3.94)
80	INC	211 (42.12)	AIADMK	192 (38.32)	19 (3.8)	NTK	52 (10.38)	46 (9.18)
80A	AIADMK	212 (46.8)	INC	204 (45.03)	8 (1.77)	NTK	17 (3.75)	20 (4.42)
81	AIADMK	395 (50.97)	INC	309 (39.87)	86 (11.1)	NTK	33 (4.26)	38 (4.9)
82	INC	344 (48.25)	AIADMK	291 (40.81)	53 (7.44)	NTK	39 (5.47)	39 (5.47)
83	AIADMK	199 (44.52)	INC	179 (40.04)	20 (4.48)	NTK	55 (12.3)	14 (3.13)
83A	AIADMK	246 (56.55)	INC	154 (35.4)	92 (21.15)	NTK	20 (4.6)	15 (3.45)
84	AIADMK	228 (45.69)	INC	196 (39.28)	32 (6.41)	NTK	42 (8.42)	33 (6.61)
85	AIADMK	345 (52.51)	INC	209 (31.81)	136 (20.7)	NTK	67 (10.2)	36 (5.48)
86	INC	264 (52.69)	AIADMK	172 (34.33)	92 (18.36)	NTK	40 (7.98)	25 (4.99)
86A	INC	297 (51.47)	AIADMK	225 (38.99)	72 (12.48)	NTK	27 (4.68)	28 (4.85)
87	AIADMK	218 (51.05)	INC	149 (34.89)	69 (16.16)	NTK	32 (7.49)	28 (6.56)

Contd....

## Socio-Economic Amenities - Rural

### Access to Education Facilities

Particulars	Number of Villages (% of Population)				
	Available	Not Available	If Not Available (Distance of Nearest Facility)		
			A	B	C
Govt. Primary School	57 (90)	16 (10)	4 (0)	0 (0)	0 (0)
Private Primary School	44 (66)	29 (34)	0 (0)	0 (0)	0 (0)
Govt. Middle School	33 (62)	40 (38)	11 (7)	0 (0)	0 (0)
Private Middle School	33 (54)	40 (46)	8 (4)	2 (2)	0 (0)
Govt. Secondary School	17 (36)	56 (64)	22 (25)	4 (4)	0 (0)
Private Secondary School	10 (21)	63 (79)	15 (13)	7 (6)	0 (0)
Govt. Senior Secondary School	12 (28)	61 (72)	24 (30)	6 (7)	0 (0)
Private Senior Secondary School	4 (9)	69 (91)	18 (17)	10 (11)	0 (0)
Govt. Arts and Science Degree College	2 (4)	71 (96)	4 (5)	7 (10)	10 (14)
Private Arts and Science Degree College	2 (3)	71 (97)	8 (12)	25 (28)	15 (25)
Govt. Engineering College	0 (0)	73 (100)	0 (0)	0 (0)	11 (17)
Private Engineering College	1 (2)	72 (98)	11 (10)	26 (32)	24 (39)
Govt. Medicine College	0 (0)	73 (100)	1 (1)	0 (0)	69 (95)
Private Medicine College	0 (0)	73 (100)	0 (0)	0 (0)	3 (3)
Govt. Management Institute	0 (0)	73 (100)	0 (0)	0 (0)	50 (68)
Private Management Institute	0 (0)	73 (100)	0 (0)	3 (2)	20 (30)
Govt. Polytechnic	0 (0)	73 (100)	0 (0)	0 (0)	19 (24)
Private Polytechnic	1 (4)	72 (96)	10 (10)	18 (20)	25 (42)
Govt. Vocational Training School/ITI	0 (0)	73 (100)	2 (4)	2 (2)	36 (43)
Private Vocational Training School/ITI	1 (3)	72 (97)	9 (11)	12 (20)	11 (16)
Govt. Non Formal Training Centre	57 (90)	16 (10)	14 (8)	2 (2)	0 (0)
Private Non Formal Training Centre	0 (0)	73 (100)	0 (0)	0 (0)	0 (0)
Govt. School For Disabled	0 (0)	73 (100)	0 (0)	0 (0)	36 (55)
Private School For Disabled	0 (0)	73 (100)	2 (4)	9 (10)	26 (32)
Government Others	0 (0)	73 (100)	0 (0)	0 (0)	0 (0)
Private Others	0 (0)	73 (100)	0 (0)	0 (0)	0 (0)

Note : Distance A : Less than 5 km; B : Between 5-10 km; C : 10+ km.; Source : Data Analysis is based on 2011 Census.

## DISCLAIMER

The Terms of Use and Disclaimer of Datanet India Private Limited (hereinafter referred to as "Datanet") for use of this analysis report of **Srivaikuntam Assembly Constituency (Srivaikuntam Vidhan Sabha)** :-

1. **Assembly Factbook™** is a Registered Trade Mark owned by Datanet.
2. All the maps are sketched and graphical representation only and have not been drawn to the scale and also not to represent the actual geographical area or boundary of the unit.
3. The data for the aforesaid analysis is based on authentic sources and has been culled from the various publications of Census, CSO and NSSO for district and block level data, various central and state government departments, Central & State Elections Commissions and the concerned Returning Officers' releases, Electoral Rolls, Election results and allied publications, internal assessment, surveys, estimates and analysis. Therefore, certain adjustment of data at micro level may have been done to arrive closer to the macro data.
4. Data have been provided on an "As Is" and "As AVAILABLE" basis
5. The colours shown in the maps or diagram and charts of a particular party, alliance or AC are indicative and do not represent them.
6. This publication which includes maps, sheets, graphs and data would be the property under copyright of Datanet only. The user may use these for its internal study, analysis and research purposes. It's public display, re-selling or any commercial uses by the user are not allowed.
7. Datanet has taken due care and caution in compilation and processing of data and allied information, but does not guarantee the accuracy, adequacy or completeness of any information/analysis and will be not responsible for any errors or omissions or for the results obtained from the use of such information/analysis.
8. All the contents for the publication have been culled from various authentic sources and Datanet reasonably believes such sources to be reliable, but does not make any representations, express or implied as to the accuracy or fitness of use of such information. The information or contents of the information/analysis do not constitute advice and should not be relied upon in making (or refraining from making) any decision. Any reliance placed upon the information provided by Datanet is the sole responsibility and strictly at the user's risk.
9. In no event will Datanet be liable for any damages (including, without limitation, damages for loss of business projects, or loss of profits) arising in contract, tort or otherwise from the use of or inability to use any of its contents, or from any action taken (or refrained from being taken) as a result of using the analysis or any of its contents. Datanet its directors, owners, editors, officials, employees, distributor and agents or any associate will not be liable for any errors in the information contained or any consequences arising from the use of the contents of the provided information/analysis.
10. If any provision of these terms and conditions is held invalid or illegal or unenforceable for any reason by any court of competent jurisdiction, such provision shall be severed and the remainder of provisions of the terms and conditions shall continue in full force and effect as if the Term of Use had been executed with the invalid, illegal or unenforceable provision eliminated.
11. If there are any discrepancies in the information provided, please bring it to attention of Datanet for suitable rectification measures.



**Buy Online This Complete Book At**  
**Datanet India eBooks Store**

[www.indiastatpublications.com](http://www.indiastatpublications.com)

or go directly at

[http://www.indiastatpublications.com/  
Assembly\\_factbook/Tamil\\_Nadu/Thoothukkudi/ Srivaikuntam](http://www.indiastatpublications.com/Assembly_factbook/Tamil_Nadu/Thoothukkudi/Srivaikuntam)

 **indiastat**elections

