



Tamil Nadu

Assembly Factbook™

Tiruchendur Assembly Constituency



Key Electoral Data of Tiruchendur
Assembly Constituency (Vidhan Sabha)

Tamil Nadu

Assembly Factbook™

Tiruchendur Assembly Constituency



Tiruchendur Vidhan Sabha

Editor & Director

Dr. R.K. Thukral

Research Editor

Dr. Shafeeq Rahman

Compiled, Researched and Published by Datanet India Pvt. Ltd.

D-100, 1st Floor,

Okhla Industrial Area, Phase-I,
New Delhi- 110020.

Ph.: 91-11- 43580781-84

Email : support@indiastatpublications.com

Website : www.indiastatelections.com

Online Book Store :

www.indiastatpublications.com

Report No. : AFB/TN-215-0123

ISBN : 978-93-5313-886-8

First Edition : January, 2018

Sixth Updated Edition : January, 2023

Price : Rs. 11500/-

US\$ 310

© Datanet India Pvt. Ltd.

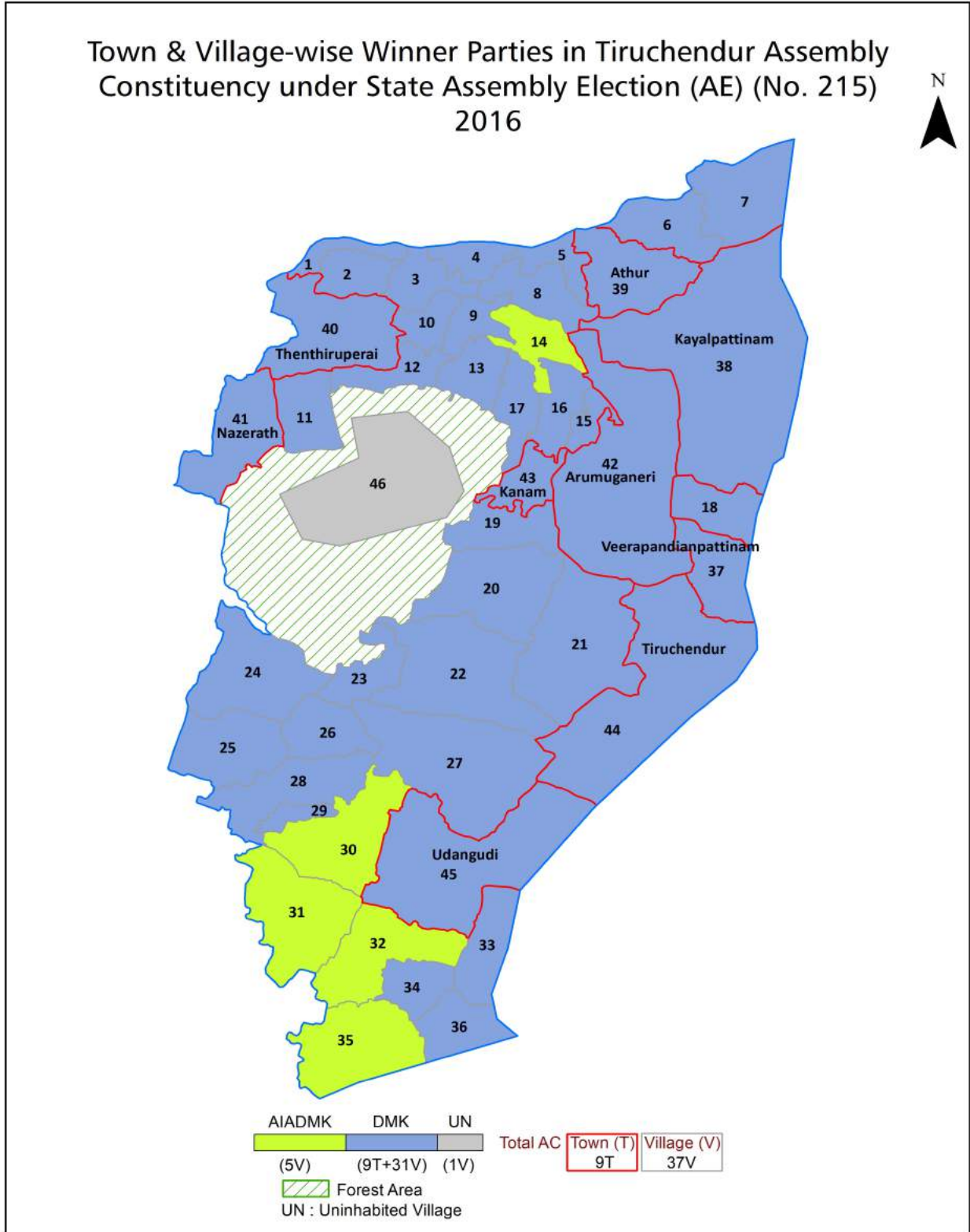
All rights reserved. No part of this book may be reproduced, stored in a retrieval system or transmitted in any form or by any means, mechanical photocopying, photographing, scanning, recording or otherwise without the prior written permission of the publisher. Please refer to Disclaimer at page no. 235 for the use of this publication.

Printed in India

Contents

No.	Particulars	Page No.
	Introduction	
1	Assembly Constituency - (Vidhan Sabha) at a Glance Features of Assembly as per Delimitation Commission of India (2008)	1-2
	Location and Political Maps	
2	Location Map Boundaries of Assembly Constituency - (Vidhan Sabha) in District Boundaries of Assembly Constituency under Parliamentary Constituency - (Lok Sabha) Town & Village-wise Winner Parties- 2021, 2019, 2016, 2014, 2011 and 2009	3-11
	Administrative Setup (2011)	
3	District Sub-district Towns Villages Inhabited Villages Uninhabited Villages Village Panchayat Intermediate Panchayat	12-15
	Demographics (2011)	
4	Population Households Rural/Urban Population Towns and Villages by Population Size Sex Ratio (Total & 0-6 Years) Religious Population Social Population Literacy Rate	16-17
	Electoral Features	
5	Important Dates of Last Elections Held Electors by Gender Service Electors Voters Voters Turnout Polling Stations & Average Number of Electors per Polling Station Electors by Age Group Present Elected Representatives	18-23
	Historical Summary Election Results	
6	Vote Share of Major Parties Winning Margin (Number & Percentage) Polarity of Parties Summary Result of Assembly Segment of Parliamentary Elections 2019, 2014, 2009, 2004 and 1999 Summary Result of Assembly Elections 2021, 2016, 2011, 2006, 2001, 1996, 1991, 1989, 1984, 1980, 1977, 1971 and 1967	24-46
	Polling Station Level Election Results	
7	Name and Number of Polling Station 2021, 2019, 2016, 2014, 2011 and 2009 Polling Station-wise Electors, Voters & Voters Turnout 2021, 2019, 2016, 2014, 2011 and 2009 Polling Station wise Elections Results 2021, 2019, 2016, 2014, 2011 and 2009	47-214
	Share of Assembly Constituency	
8	Share of Assembly Constituency - (Vidhan Sabha) in State, District and Parliamentary Constituency - (Lok Sabha)	215
	Socio-Economic Amenities (2011)	
9	Access to Administrative Units Agricultural, Manufacturing and Industrial Commodities Demographic Indicators Education Health & Manpower Drinking Water Supply Sanitation Entertainment and Recreations Infrastructure Power Food Allocation Distribution and Marketing of Agriculture Commodities Infrastructure Transport and Road Infrastructure Communication Banking and Financial Services Land Use Irrigation Source	216-231
10	Abbreviation & Sources	232-234
11	Disclaimer	235

Location & Political Map



Administrative Setup

List of Village Panchayat & Intermediate Panchayat (Block) Name - 2011

Village Name	Village Panchayat Name	Intermediate Panchayat Name
Ammanpuram	Ammanpuram	Tiruchendur
Angamangalam	Angamangalam , Alagappapuram	Alwarthirunagari
Athiyakuruchi	Athiyakuruchi	Udangudi
Chettiyapathu	Chettiyapathu	Udangudi
Katchanavilai	Katchanavilai	Alwarthirunagari
Kayamozhi	Kayamozhi	Tiruchendur
Kulasekaranpattinam	Kulasekaranpattinam, Siranadarkudierappu	Udangudi
Kuthiraimozhi	Kuthiraimozhi	Udangudi
Lakshmiapuram	Lakshmiapuram	Udangudi
Manaduthandupathu	Manaduthandupathu , Vellalanvilai, Nainapathu, Seerkatchi	Udangudi
Manapad	Manappadu	Udangudi
Mathavankuruchi	Mathavankuruchi	Udangudi
Maveedupannai	Kurankani	Alwarthirunagari
Megnanapuram	Meignanapuram	Udangudi
Mela Authoor	Mela Authoor	Alwarthirunagari
Mela Thiruchendur	Mela Thiruchendur , Pitchivilai	Tiruchendur
Moolakkarai	Moolakkarai	Tiruchendur
Mukkuperi	Mookkuperi	Alwarthirunagari
Nallur	Nallur	Tiruchendur
Nalumavadi	Nalumavadi	Alwarthirunagari
Nangaimozhi	Nangaimozhi	Udangudi
Pallipathu	Pallipathu	Tiruchendur
Paramankurichi	Paramankurichi	Udangudi
Punnakayal	Punnakayal	Alwarthirunagari
Puraiyoor	Puraiyoor	Alwarthirunagari
Semmarikulam	Semmarikulam , Meignanapuram	Udangudi
Senthamangalam	Serthamangalam	Alwarthirunagari
Sethukkuvaithan	Sethukkuvaithan	Alwarthirunagari
Suganthalai	Varandivel, Suganthalai	Alwarthirunagari

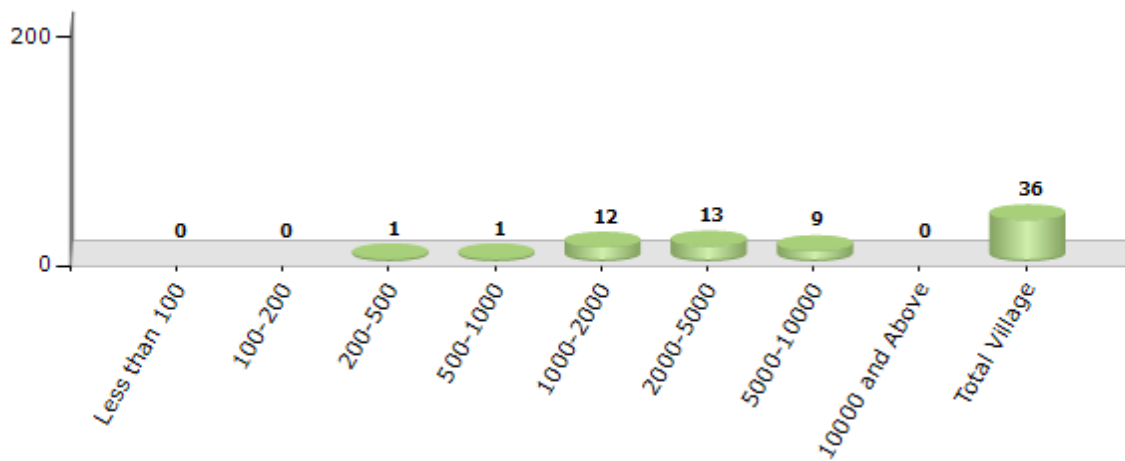
Contd....

Demographics

Number of Villages by Population Size - 2011

Less than 100	100-200	200-500	500-1000	1000-2000	2000-5000	5000-10000	10000 and Above	Total Village
0	0	1	1	12	13	9	0	36

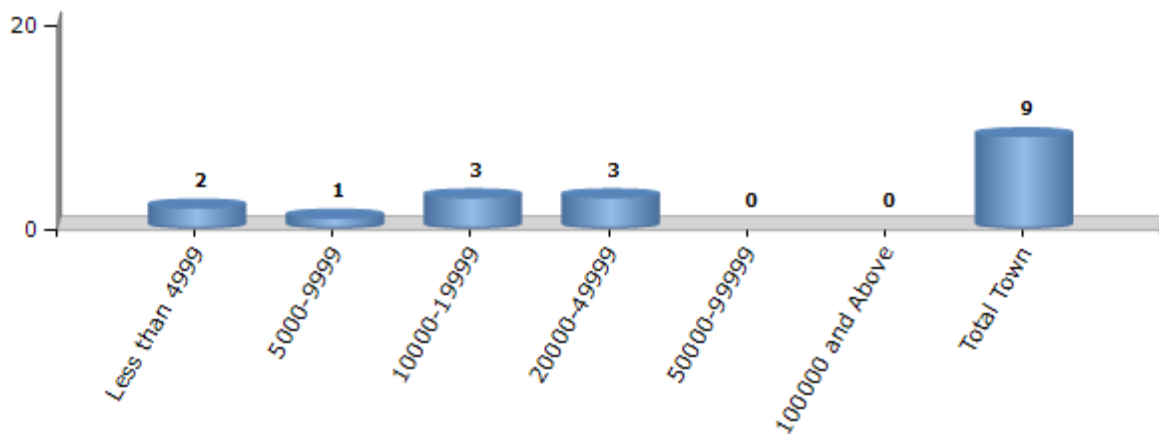
Number of Villages by Population Size - 2011



Number of Towns by Population Size - 2011

Less than 4999	5000-9999	10000-19999	20000-49999	50000-99999	100000 and Above	Total Town
2	1	3	3	0	0	9

Number of Towns by Population Size - 2011

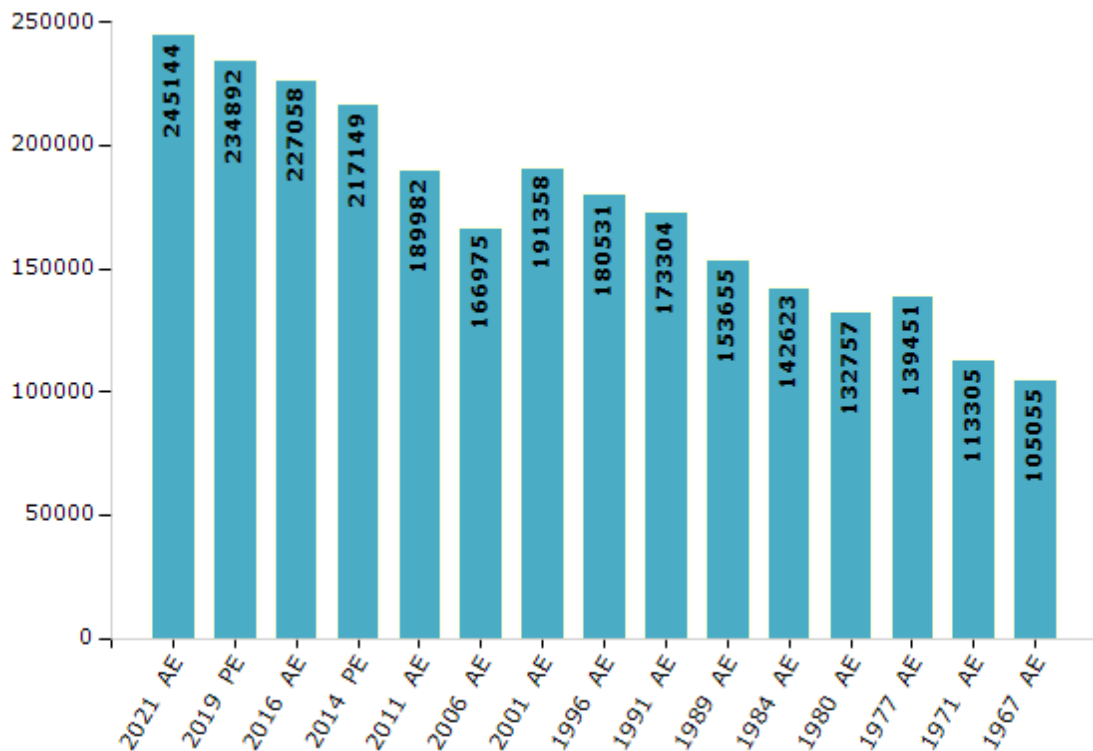


Electoral Features

Electors by Male & Female

Year	Male	Female	Others	Total	Year	Male	Female	Others	Total
2021 AE	118928	126199	17	245144	1999 PE	-	-	-	-
2019 PE	114382	120492	18	234892	1996 AE	89585	90946	-	180531
2016 AE	110939	116107	12	227058	1991 AE	85210	88094	-	173304
2014 PE	106467	110682	0	217149	1989 AE	75852	77803	-	153655
2011 AE	92426	97556	-	189982	1984 AE	70022	72601	-	142623
2009 PE	-	-	-	-	1980 AE	64529	68228	-	132757
2006 AE	79540	87435	-	166975	1977 AE	67635	71816	-	139451
2004 PE	-	-	-	-	1971 AE	54762	58543	-	113305
2001 AE	93146	98212	-	191358	1967 AE	-	-	-	105055

Number of Electors

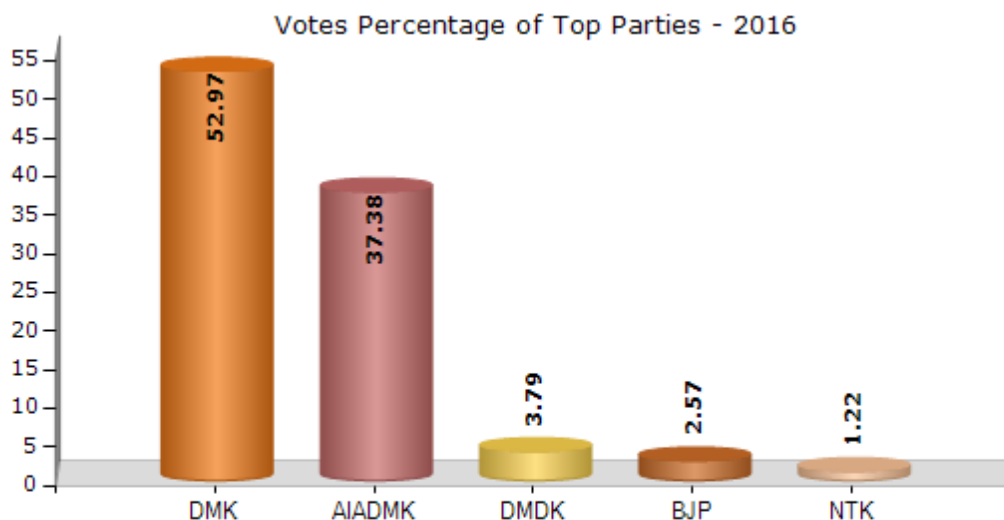


Note : AE : Assembly Election, PE : Assembly Segment of Parliamentary Election

Historical Summary Election Results

Summary Result of Assembly Election - 2016

Candidate Name	Party	Votes	Votes %
Anitha R Radhakrishnan	DMK	88357	52.97
Sarathkumar.R	AIADMK	62356	37.38
Senthilkumar.S.A	DMDK	6330	3.79
Jeyaraman.V	BJP	4289	2.57
Gloriyan.S	NTK	2041	1.22
Kumara Gurupara Adithan D.	PMK	578	0.35
Ganapathy Perumal.G	BSP	420	0.25
Lowhirajan.M	IND	216	0.13
Valampuri.P	IND	141	0.08
Senthamilan.E	IND	90	0.05
Ananthraj.R	IND	70	0.04
Suresh.N	IND	63	0.04
Sukumar.S	IND	43	0.03
	NOTA	1814	1.09



Polling Station Level Election Results

Number and Name of Polling Stations (PS) (2021)

Number of Polling Stations	Name of Polling Stations	Number of Polling Stations	Name of Polling Stations
1	Hindu Primary SchoolKurankani	16A	St.Joseph R.C. Primary School East Portion Class Room 4 and 5, Kandasamipuram,Kandasamipuram, Nazareth
2	Govt High Secondary School west BuildingMaveedupannai	17	St.Joseph . Primary School West Portion Std 4th Class RoomKanthasamy puram ,Nazareth.
2A	Govt High Secondary School west BuildingMaveedupannai	17A	St.Joseph . Primary School West Portion Std 4th Class RoomKanthasamy puram ,Nazareth.
3	Panchayat Union Primary School New Building North Portion, 1st RoomThenthiruperai	18	T.N.D.T.A Kaspas Primary School, East BuildingDhosan Street ,Nazareth
4	Panchayat Union Primary School New Building Middle RoomThenthiruperai	19	T.N.D.T.A Kaspas Primary School, South Building, Middle Portion, Dhasan Street, Nazareth
5	T.N.D.T.A Primary School, Block 4Rajapathi.	20	Dr.MaduramTN.D.T.A Middle School South BuildingNazareth
5A	T.N.D.T.A Primary School, Block 4Rajapathi.	21	Dr.MaduramTN.D.T.A Middle School North BuildingNazareth
6	TN.D.T.A Primary School East Portion, Kulaikkangudi Block 5,Kurukattur	22	St. Mariannai Middle School, Room 2,Prakasapuram ,Nazareth
7	TN.D.T.A Primary School West Portion, Kulaikkangudi Block 5,Kurukattur	23	St. Mariannai Middle School, Room No.3Prakasapuram ,Nazareth
8	Anganwadi Centre Keelakallaamparai.	24	James Memorial Metriculation Higher Secondary of S.D.A. School, Elemenstry Section Building, 4th RoomPriakasapuram
9	Panchayat Union Primary SchoolMelakadamba	24A	James Memorial Metriculation Higher Secondary of S.D.A. School, Elemenstry Section Building, 4th RoomPriakasapuram
10	Panchayat Union Middle School, East Building, Puraieur	25	Eka Iratchakar Sabai Middle School East Building, South portion, (Ground Floor)Mookkuperi
11	Hindu Primary School East Building, Agappaikulam	26	Eka Iratchakar Sabai Middle School East Building North Portion (Ground Floor)Mookkuperi
11A	Hindu Primary School East Building, Agappaikulam	27	St. Marks Higher Secondary School Middle Building West Portion (Class 10 B)Mookkuperi
12	Margochis Higher Secondary School Room No 6 Standard 11C,Nazareth	28	St. Marks Higher Secondary School Middle Building East Portion (Class 10 C)Mookkuperi
13	Margochis Higher Secondary School Class Room 11A StdNazareth	29	Asoka Vidhyalaya Middle School Centre Portion 7th Standard roomKatchanavilai
13A	Margochis Higher Secondary School Class Room 11A StdNazareth	30	Asoka Vidhyalaya Middle School west PortionKacthanavillai
14	Margochis Higher Secondary School, Class Room4th Std 12BNazareth	31	T.N.D.T.A Primary School, East Building, Ratchiniyapuram, Idaiyenvillai
14A	Margochis Higher Secondary School, Class Room4th Std 12BNazareth	31A	T.N.D.T.A Primary School, East Building, Ratchiniyapuram, Idaiyenvillai
15	St.Joseph R.C. Primary School East Portion Class Room 1 and 2Kandasamipuram, Nazareth	32	Panchayat Union Primaryshool west Building Block-2SethukuVaaithaan
16	St.Joseph R.C. Primary School East Portion Class Room 4 and 5, Kandasamipuram,Kandasamipuram, Nazareth	32A	Panchayat Union Primaryshool west Building Block-2SethukuVaaithaan

Contd....

Polling Station Level Election Results

Polling Station-wise Votes Secured by Overall Top Five Parties in Tiruchendur Assembly in Assembly Election (AE) under Thoothukkudi Parliamentary Constituency in Tamil Nadu (2021)

Number of Polling Station	Winner - Anitha R. Radhakrishnan (DMK)	Runner-up - Radha krishnan M (AIADMK)	3rd - Gloriyan S (NTK)	4th - Vadamalai pandian S (AMMKMNKZ)	5th - Jayanthi M (MNM)	NOTA	Other	Total Votes Secured
28	273	172	36	5	4	3	3	496
29	336	111	44	12	7	2	2	514
30	193	191	33	5	3	3	1	429
31	154	135	39	5	0	0	4	337
31A	191	149	22	2	2	2	5	373
32	201	114	48	12	2	1	3	381
32A	218	158	19	5	1	2	3	406
33	277	273	54	2	1	6	6	619
34	238	199	71	6	7	2	5	528
35	185	156	49	15	7	4	0	416
35A	191	169	32	8	5	1	1	407
36	255	266	68	4	6	2	6	607
37	348	252	119	30	3	9	8	769
38	198	144	8	0	0	2	1	353
39	614	40	16	16	1	2	3	692
40	142	142	51	42	2	3	5	387
40A	113	194	33	36	4	0	2	382
41	177	211	48	12	5	7	4	464
41A	176	240	30	11	6	7	11	481
42	250	234	49	14	17	6	2	572
43	159	140	38	14	16	4	2	373
44	357	17	40	36	0	0	3	453
44A	434	17	17	19	1	4	5	497
45	303	199	76	11	10	7	6	612
46	232	274	74	13	7	7	7	614
47	217	282	35	5	3	1	2	545
48	152	144	49	49	11	2	1	408
48A	198	132	30	52	7	1	7	427
49	266	176	138	12	2	0	6	600
50	249	283	84	24	3	2	20	665
51	224	168	69	59	2	1	5	528
52	222	114	49	4	0	2	3	394
53	234	62	131	4	9	0	3	443
54	274	110	115	1	4	2	1	507
55	205	324	219	1	9	1	3	762

Contd....

Polling Station Level Election Results

Winner, Runner-up and 3rd Party Position & Winning Margin According to Polling Stations in Tiruchendur Assembly in Assembly Election (AE) under Thoothukkudi Parliamentary Constituency in Tamil Nadu (2021)

Polling Station Number	Winner Party	Winner Votes (%)	Runner-up Party	Runner-up Votes (%)	Winning Margin Votes (%)	Third Party	Third Party Votes (%)	Other Votes (%)
56	DMK	191 (46.93)	AIADMK	102 (25.06)	89 (21.87)	NTK	99 (24.32)	15 (3.69)
56A	DMK	220 (46.12)	AIADMK	130 (27.25)	90 (18.87)	NTK	116 (24.32)	11 (2.31)
57	DMK	320 (56.94)	NTK	136 (24.2)	184 (32.74)	AIADMK	95 (16.9)	11 (1.96)
58	DMK	195 (48.75)	NTK	101 (25.25)	94 (23.5)	AIADMK	100 (25)	4 (1)
58A	DMK	205 (44.09)	NTK	133 (28.6)	72 (15.49)	AIADMK	119 (25.59)	8 (1.72)
59	DMK	213 (42.01)	NTK	165 (32.54)	48 (9.47)	AIADMK	119 (23.47)	10 (1.97)
60	DMK	277 (56.3)	NTK	120 (24.39)	157 (31.91)	AIADMK	84 (17.07)	11 (2.24)
61	AIADMK	316 (52.4)	DMK	187 (31.01)	129 (21.39)	NTK	77 (12.77)	23 (3.81)
62	AIADMK	398 (49.44)	DMK	300 (37.27)	98 (12.17)	NTK	86 (10.68)	21 (2.61)
63	DMK	301 (45.95)	AIADMK	299 (45.65)	2 (0.3)	NTK	29 (4.43)	26 (3.97)
64	AIADMK	345 (51.19)	DMK	236 (35.01)	109 (16.18)	NTK	52 (7.72)	41 (6.08)
65	DMK	207 (51.49)	AIADMK	120 (29.85)	87 (21.64)	NTK	57 (14.18)	18 (4.48)
65A	DMK	243 (54.36)	AIADMK	157 (35.12)	86 (19.24)	NTK	34 (7.61)	13 (2.91)
66	AIADMK	228 (44.79)	DMK	199 (39.1)	29 (5.69)	NTK	39 (7.66)	43 (8.45)
67	DMK	289 (67.05)	AIADMK	83 (19.26)	206 (47.79)	NTK	44 (10.21)	15 (3.48)
68	DMK	242 (47.36)	AIADMK	179 (35.03)	63 (12.33)	NTK	48 (9.39)	42 (8.22)
69	DMK	255 (55.56)	AIADMK	154 (33.55)	101 (22.01)	NTK	32 (6.97)	18 (3.92)
70	DMK	256 (53.11)	AIADMK	166 (34.44)	90 (18.67)	NTK	44 (9.13)	16 (3.32)
71	DMK	218 (43.25)	AIADMK	205 (40.67)	13 (2.58)	NTK	55 (10.91)	26 (5.16)
72	AIADMK	322 (48.79)	DMK	271 (41.06)	51 (7.73)	NTK	39 (5.91)	28 (4.24)
73	AIADMK	154 (55.6)	DMK	58 (20.94)	96 (34.66)	AMMKMNKZ	38 (13.72)	27 (9.75)
74	DMK	374 (47.95)	AIADMK	248 (31.79)	126 (16.16)	AMMKMNKZ	71 (9.1)	87 (11.15)
75	DMK	206 (41.78)	AIADMK	196 (39.76)	10 (2.02)	AMMKMNKZ	49 (9.94)	42 (8.52)
75A	AIADMK	232 (46.87)	DMK	200 (40.4)	32 (6.47)	AMMKMNKZ	29 (5.86)	34 (6.87)
76	AIADMK	236 (48.46)	DMK	188 (38.6)	48 (9.86)	NTK	43 (8.83)	20 (4.11)
77	DMK	196 (51.44)	AIADMK	139 (36.48)	57 (14.96)	NTK	38 (9.97)	8 (2.1)
78	DMK	333 (50.23)	AIADMK	262 (39.52)	71 (10.71)	NTK	48 (7.24)	20 (3.02)
79	DMK	293 (64.68)	AIADMK	118 (26.05)	175 (38.63)	NTK	23 (5.08)	19 (4.19)
80	AIADMK	419 (57.48)	DMK	234 (32.1)	185 (25.38)	NTK	44 (6.04)	32 (4.39)
81	AIADMK	350 (47.62)	DMK	301 (40.95)	49 (6.67)	NTK	56 (7.62)	28 (3.81)
82	AIADMK	210 (54.83)	DMK	111 (28.98)	99 (25.85)	NTK	39 (10.18)	23 (6.01)
82A	AIADMK	225 (59.68)	DMK	104 (27.59)	121 (32.09)	NTK	26 (6.9)	22 (5.84)
83	DMK	224 (41.25)	AIADMK	211 (38.86)	13 (2.39)	NTK	63 (11.6)	45 (8.29)
83A	DMK	241 (43.27)	AIADMK	239 (42.91)	2 (0.36)	NTK	29 (5.21)	48 (8.62)
84	AIADMK	423 (58.26)	DMK	217 (29.89)	206 (28.37)	NTK	50 (6.89)	36 (4.96)

Contd....

Socio-Economic Amenities - Rural

Access to Education Facilities

Particulars	Number of Villages (% of Population)				
	Available	Not Available	If Not Available (Distance of Nearest Facility)		
			A	B	C
Govt. Primary School	32 (91)	4 (9)	0 (0)	0 (0)	0 (0)
Private Primary School	22 (72)	14 (28)	0 (0)	0 (0)	0 (0)
Govt. Middle School	16 (58)	20 (42)	6 (7)	1 (1)	0 (0)
Private Middle School	19 (68)	17 (32)	2 (4)	1 (1)	0 (0)
Govt. Secondary School	7 (27)	29 (73)	11 (19)	2 (2)	0 (0)
Private Secondary School	13 (51)	23 (49)	4 (11)	2 (3)	0 (0)
Govt. Senior Secondary School	3 (10)	33 (90)	12 (21)	3 (10)	0 (0)
Private Senior Secondary School	9 (42)	27 (58)	6 (17)	4 (5)	0 (0)
Govt. Arts and Science Degree College	0 (0)	36 (100)	1 (3)	1 (1)	0 (0)
Private Arts and Science Degree College	1 (2)	35 (98)	4 (10)	11 (31)	18 (53)
Govt. Engineering College	0 (0)	36 (100)	0 (0)	0 (0)	0 (0)
Private Engineering College	0 (0)	36 (100)	1 (3)	10 (29)	25 (69)
Govt. Medicine College	0 (0)	36 (100)	0 (0)	0 (0)	36 (100)
Private Medicine College	0 (0)	36 (100)	0 (0)	0 (0)	0 (0)
Govt. Management Institute	0 (0)	36 (100)	0 (0)	2 (13)	32 (83)
Private Management Institute	0 (0)	36 (100)	1 (3)	0 (0)	1 (1)
Govt. Polytechnic	0 (0)	36 (100)	0 (0)	0 (0)	1 (1)
Private Polytechnic	0 (0)	36 (100)	1 (3)	5 (14)	29 (82)
Govt. Vocational Training School/ITI	0 (0)	36 (100)	0 (0)	3 (9)	30 (86)
Private Vocational Training School/ITI	0 (0)	36 (100)	1 (3)	1 (1)	1 (1)
Govt. Non Formal Training Centre	32 (91)	4 (9)	3 (8)	1 (1)	0 (0)
Private Non Formal Training Centre	0 (0)	36 (100)	0 (0)	0 (0)	0 (0)
Govt. School For Disabled	0 (0)	36 (100)	0 (0)	0 (0)	0 (0)
Private School For Disabled	0 (0)	36 (100)	0 (0)	3 (9)	33 (91)
Government Others	0 (0)	36 (100)	0 (0)	0 (0)	0 (0)
Private Others	0 (0)	36 (100)	0 (0)	0 (0)	0 (0)

Note : Distance A : Less than 5 km; B : Between 5-10 km; C : 10+ km.; Source : Data Analysis is based on 2011 Census.

DISCLAIMER

The Terms of Use and Disclaimer of Datanet India Private Limited (hereinafter referred to as "Datanet") for use of this analysis report of **Tiruchendur Assembly Constituency (Tiruchendur Vidhan Sabha)** :-

1. **Assembly Factbook™** is a Registered Trade Mark owned by Datanet.
2. All the maps are sketched and graphical representation only and have not been drawn to the scale and also not to represent the actual geographical area or boundary of the unit.
3. The data for the aforesaid analysis is based on authentic sources and has been culled from the various publications of Census, CSO and NSSO for district and block level data, various central and state government departments, Central & State Elections Commissions and the concerned Returning Officers' releases, Electoral Rolls, Election results and allied publications, internal assessment, surveys, estimates and analysis. Therefore, certain adjustment of data at micro level may have been done to arrive closer to the macro data.
4. Data have been provided on an "As Is" and "As AVAILABLE" basis
5. The colours shown in the maps or diagram and charts of a particular party, alliance or AC are indicative and do not represent them.
6. This publication which includes maps, sheets, graphs and data would be the property under copyright of Datanet only. The user may use these for its internal study, analysis and research purposes. It's public display, re-selling or any commercial uses by the user are not allowed.
7. Datanet has taken due care and caution in compilation and processing of data and allied information, but does not guarantee the accuracy, adequacy or completeness of any information/analysis and will be not responsible for any errors or omissions or for the results obtained from the use of such information/analysis.
8. All the contents for the publication have been culled from various authentic sources and Datanet reasonably believes such sources to be reliable, but does not make any representations, express or implied as to the accuracy or fitness of use of such information. The information or contents of the information/analysis do not constitute advice and should not be relied upon in making (or refraining from making) any decision. Any reliance placed upon the information provided by Datanet is the sole responsibility and strictly at the user's risk.
9. In no event will Datanet be liable for any damages (including, without limitation, damages for loss of business projects, or loss of profits) arising in contract, tort or otherwise from the use of or inability to use any of its contents, or from any action taken (or refrained from being taken) as a result of using the analysis or any of its contents. Datanet its directors, owners, editors, officials, employees, distributor and agents or any associate will not be liable for any errors in the information contained or any consequences arising from the use of the contents of the provided information/analysis.
10. If any provision of these terms and conditions is held invalid or illegal or unenforceable for any reason by any court of competent jurisdiction, such provision shall be severed and the remainder of provisions of the terms and conditions shall continue in full force and effect as if the Term of Use had been executed with the invalid, illegal or unenforceable provision eliminated.
11. If there are any discrepancies in the information provided, please bring it to attention of Datanet for suitable rectification measures.

Buy Online This Complete Book At
Datanet India eBooks Store

www.indiastatpublications.com

or go directly at

[http://www.indiastatpublications.com/
Assembly_factbook/Tamil_Nadu/Thoothukkudi/Tiruchendur](http://www.indiastatpublications.com/Assembly_factbook/Tamil_Nadu/Thoothukkudi/Tiruchendur)

 **india**stat**elections**

