



Uttarakhand

Assembly Factbook™

Almora Assembly Constituency



Key Electoral Data of Almora
Assembly Constituency (Vidhan Sabha)

Uttarakhand

Assembly Factbook™

Almora Assembly Constituency



Almora Vidhan Sabha

Editor & Director

Dr. R.K. Thukral

Research Editor

Dr. Shafeeq Rahman

**Compiled, Researched and Published by
Datanet India Pvt. Ltd.**

D-100, 1st Floor,

Okhla Industrial Area, Phase-I,

New Delhi- 110020.

Ph.: 91-11- 43580781-84

Email : support@indiastatpublications.com

Website : www.indiastatelections.com

Online Book Store :

www.indiastatpublications.com

Report No. : AFB/UK-052-0123

ISBN : 978-93-5822-504-4

First Edition : January, 2018

Sixth Updated Edition : January, 2023

Price : Rs.11500/-

US\$ 310

© Datanet India Pvt. Ltd.

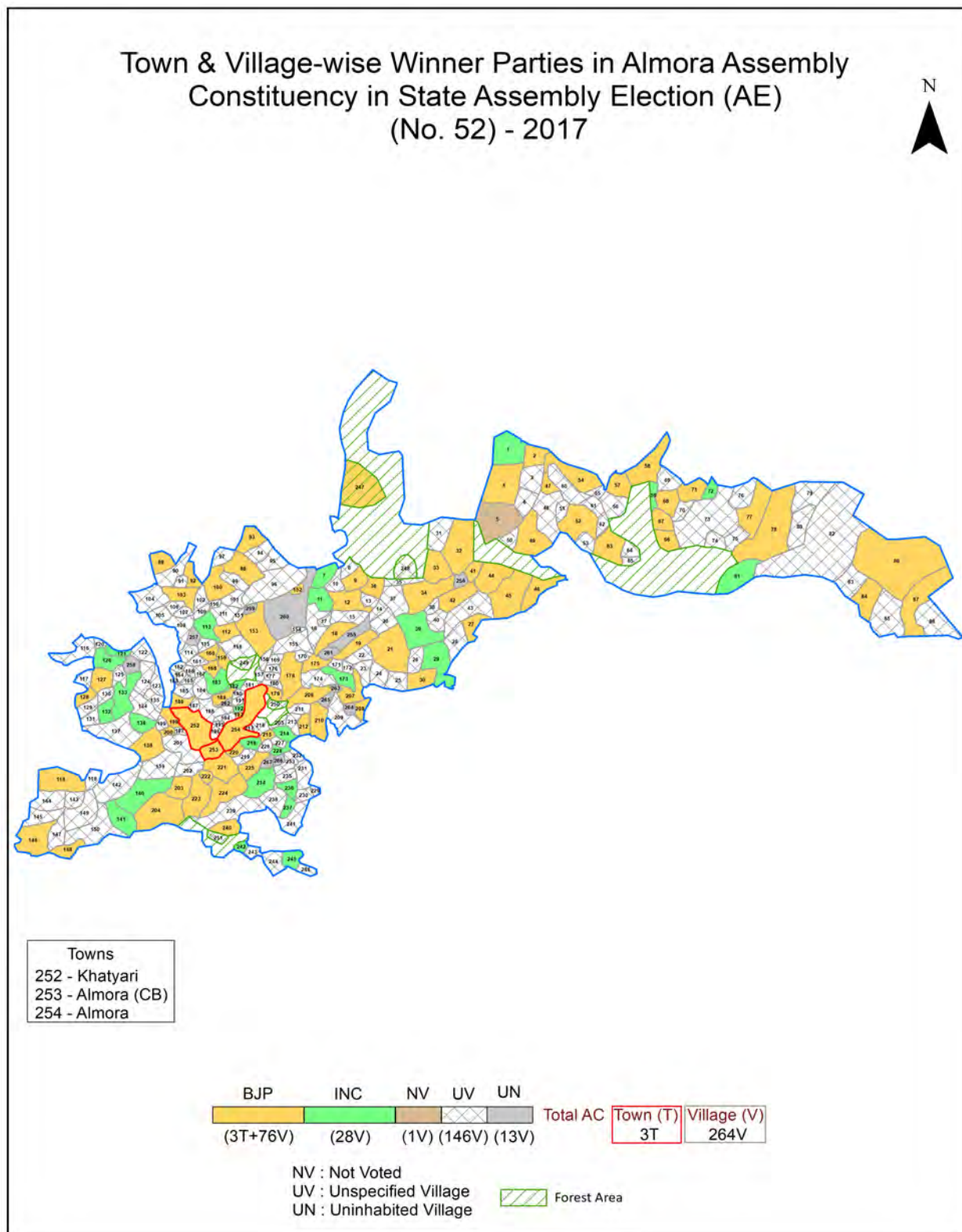
All rights reserved. No part of this book may be reproduced, stored in a retrieval system or transmitted in any form or by any means, mechanical photocopying, photographing, scanning, recording or otherwise without the prior written permission of the publisher. Please refer to Disclaimer at page no. 167 for the use of this publication.

Printed in India

Contents

No.	Particulars	Page No.
	Introduction	
1	Assembly Constituency - (Vidhan Sabha) at a Glance Features of Assembly as per Delimitation Commission of India (2008)	1-2
	Location and Political Maps	
2	Location Map Boundaries of Assembly Constituency - (Vidhan Sabha) in District Boundaries of Assembly Constituency under Parliamentary Constituency - (Lok Sabha) Town & Village-wise Winner Parties- 2022, 2019, 2017, 2014, 2012 and 2009	3-11
	Administrative Setup (2011)	
3	District Sub-district Towns Villages Inhabited Villages Uninhabited Villages Village Panchayat Intermediate Panchayat	12-24
	Demographics (2011)	
4	Population Households Rural/Urban Population Towns and Villages by Population Size Sex Ratio (Total & 0-6 Years) Religious Population Social Population Literacy Rate	25-26
	Electoral Features	
5	Important Dates of Last Elections Held Electors by Gender Service Electors Voters Voters Turnout Polling Stations & Average Number of Electors per Polling Station Electors by Age Group Present Elected Representatives	27-32
	Historical Summary Election Results	
6	Vote Share of Major Parties Winning Margin (Number & Percentage) Polarity of Parties Summary Result of Assembly Segment of Parliamentary Election 2019, 2014, 2009, 2004 and 1999 Summary Result of Assembly Elections 2022, 2017, 2012, 2007 and 2002	33-45
	Polling Station Level Election Results	
7	Name and Number of Polling Station 2022, 2019, 2017, 2014, 2012 and 2009 Polling Station-wise Electors, Voters & Voters Turnout 2022, 2019, 2017, 2014, 2012 and 2009 Polling Station wise Elections Results 2022, 2019, 2017, 2014, 2012 and 2009	46-140
8	Panchayat and Local Bodies Election Results Panchayat Result 2014 Urban Local Bodies Result 2013	141-147
9	Share of Assembly Constituency Share of Assembly Constituency - (Vidhan Sabha) in State, District and Parliamentary Constituency - (Lok Sabha)	148
10	Socio-Economic Amenities (2011) Access to Administrative Units Agricultural, Manufacturing and Industrial Commodities Demographic Indicators Education Health & Manpower Drinking Water Supply Sanitation Entertainment and Recreations Infrastructure Power Food Allocation Distribution and Marketing of Agriculture Commodities Infrastructure Transport and Road Infrastructure Communication Banking and Financial Services Land Use Irrigation Source	149-164
11	Abbreviation & Sources	165-166
12	Disclaimer	167

Location & Political Map



Administrative Setup

List of Village Panchayat & Intermediate Panchayat (Block) Name - 2011

Village Name	Village Panchayat Name	Intermediate Panchayat Name
Adhar Muafi	Matela Adhar	Hawal Bagh
Adheli Sunar	Syala	Hawal Bagh
Airi Khan	Thiklana	Bhaisiya Chhana
Alai Supyal	Alai Supyal	Bhaisiya Chhana
Almora Range	-	Forest CD Block Almora
Almora Range	-	Forest CD Block Almora
Almora Range	-	Forest CD Block Almora
Almora Range	-	Forest CD Block Almora
Asota	Silkhora	Lamgarha
Atdeli Tiwari	Syali	Hawal Bagh
Athar Bari	Pandekhola	Hawal Bagh
Baburiya Nayal	Baburiyalnayal	Bhaisiya Chhana
Baisiya Chhana	Baisiya Chhana	Bhaisiya Chhana
Bajainiya Muafi	Gargut	Hawal Bagh
Bajwar	Kherda	Lamgarha
Bajyoli	Pateshal	Bhaisiya Chhana
Bakh	Golna Karariya	Hawal Bagh
Bakh Madhye Damudhara	Golna Karariya	Hawal Bagh
Bakhariya Tana	Naugaon	Bhaisiya Chhana
Balam	Raigal	Hawal Bagh
Balt Bari	Bhulyura	Hawal Bagh
Balta	Balta	Hawal Bagh
Baman Tilari	Baman Tiwari	Bhaisiya Chhana
Bamouri Khalsa	Jingal	Bhaisiya Chhana
Barakote	Naini	Bhaisiya Chhana
Bargal	Kunj Ratura	Bhaisiya Chhana
Barseemi	Barseemi	Hawal Bagh
Barsimi	Barsimi	Hawal Bagh
Baruwa Tana	Salla Bhatkote	Bhaisiya Chhana

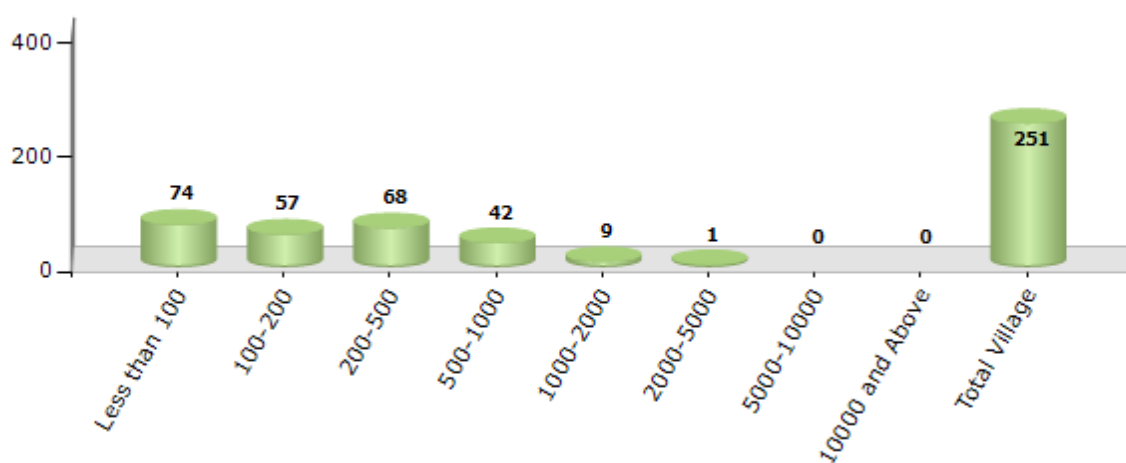
Contd....

Demographics

Number of Villages by Population Size - 2011

Less than 100	100-200	200-500	500-1000	1000-2000	2000-5000	5000-10000	10000 and Above	Total Village
74	57	68	42	9	1	0	0	251

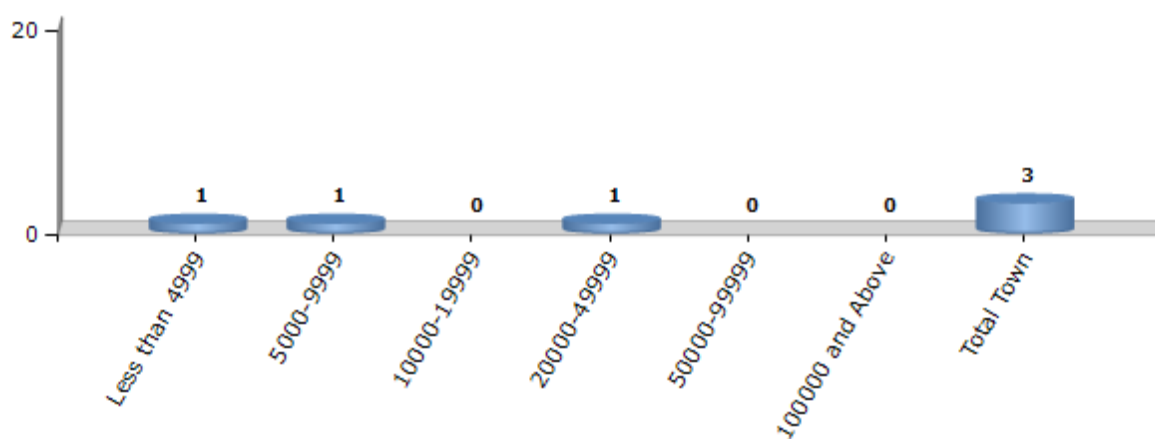
Number of Villages by Population Size - 2011



Number of Towns by Population Size - 2011

Less than 4999	5000-9999	10000-19999	20000-49999	50000-99999	100000 and Above	Total Town
1	1	0	1	0	0	3

Number of Towns by Population Size - 2011

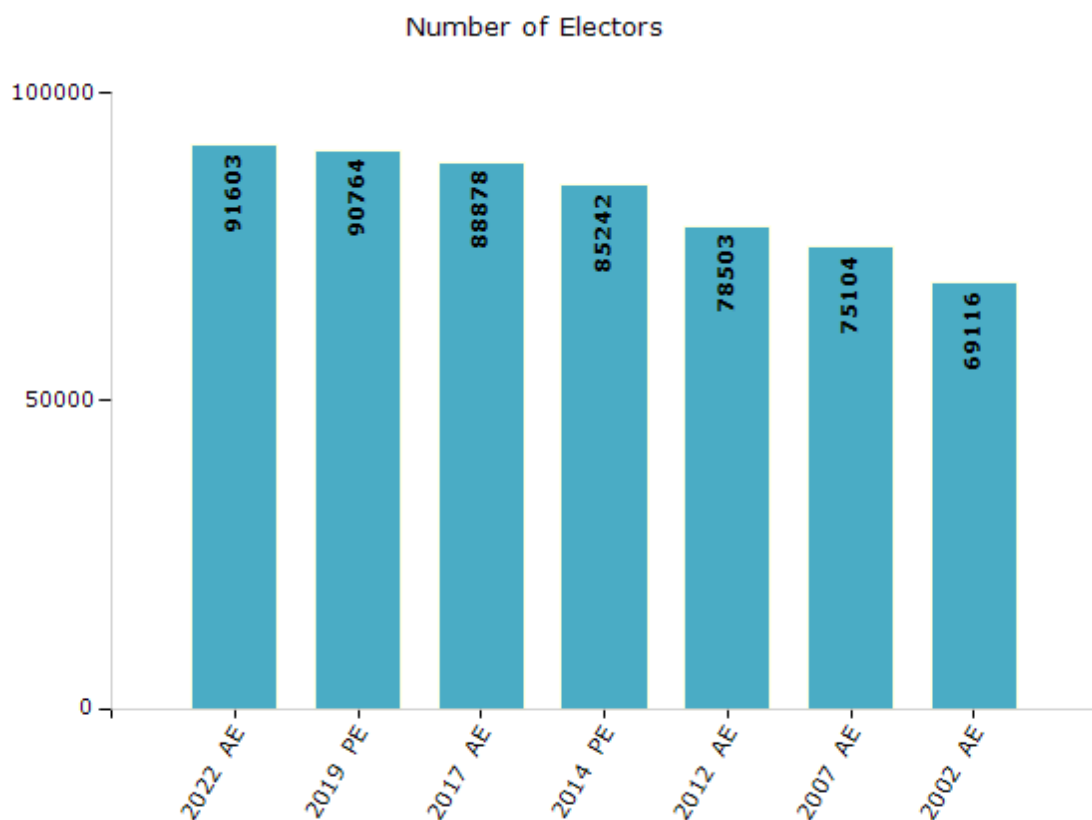


Electoral Features

Electors by Male & Female

Year	Male	Female	Others	Total
2022 AE	48064	43539	0	91603
2019 PE	47580	43184	0	90764
2017 AE	45875	43003	0	88878
2014 PE	44197	41045	0	85242
2012 AE	40768	37735	0	78503

Year	Male	Female	Others	Total
2009 PE	-	-	-	-
2007 AE	37503	37601	-	75104
2004 PE	-	-	-	-
2002 AE	35063	34053	-	69116

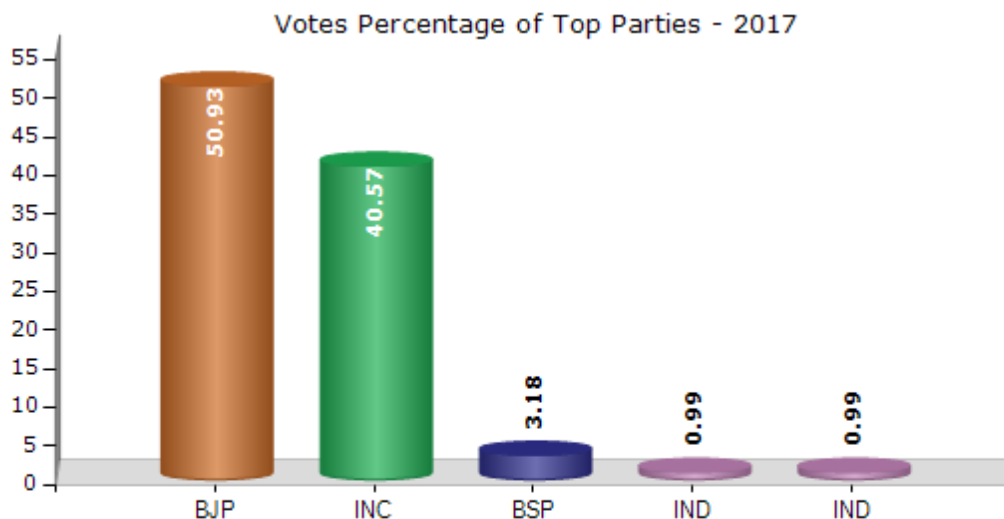


Note : AE : Assembly Election, PE : Assembly Segment of Parliamentary Election

Historical Summary Election Results

Summary Result of Assembly Election - 2017

Candidate Name	Party	Votes	Votes %
Raghunath Singh Chauhan	BJP	26464	50.93
Manoj Tewari	INC	21085	40.57
Dr.Sanjay Tamta	BSP	1654	3.18
Virendra Kumar	IND	517	0.99
Mohd Habib	IND	514	0.99
Dinesh Pande	CPM	425	0.82
Bhuwan Chandra Joshi	IND	219	0.42
Rekha Dhasmana	UPP	157	0.3
Kundan Singh Bisht	UKKD	130	0.25
Prakash Chandra Bhatt	IND	106	0.2
Jaswant Singh	SP	72	0.14
	NOTA	623	1.2



Polling Station Level Election Results

Number and Name of Polling Stations (PS) (2022)

Number of Polling Stations	Name of Polling Stations	Number of Polling Stations	Name of Polling Stations
1	Govt. Primary School, Talli Nali	22	Govt. Primary School, Jamradi
2	Panchaytghar, Malli Nali	23	Govt. Inter Collage, Naugaon
3	Girls Junior High School, Harada	24	Govt. Inter Collage, Kunkhet
4	Govt. Primary School, Taroola	25	Govt. Primary School, Bakhariyatana
5	Govt. Primary School, Naini Gunth	26	Govt. Primary School, Palyoun
6	Govt. Primary School, Jingal	27	Govt. Primary School, Diyari
7	Govt. Primary School, Dhaulnaili	28	Govt. Primary School, Malli Dhauni
8	Govt. Primary School, Katogiya Gunth	29	Govt. Primary School, Dhaulchhina
9	Govt. Primary School, Bauda Gunth	30	Govt. Primary School, Kachula
10	Govt. Primary School, Trinaili	31	Govt. Primary School, Supai Supyal
11	Govt. Primary School, Pabhyan	32	Govt. Primary School, Utiya
12	Govt. Primary School, Salyudi	33	Govt. Primary School, Alai Supyal
13	Govt. Primary School, Salla Bhatkot	34	Govt. Primary School, Bamantiladi
14	Govt. Primary School, Nayalgunth	35	Govt. Inter College, Khas Telari
15	Govt. Primmary School, Khakarigunth	36	Govt. Inter College, Barechhina
16	Govt. Primary School, Lingunta	37	Junior High School, Dewada
17	Govt. Primary School, Bagrethi	38	Govt. Primary School, Barakot
18	Govt. Primary School, Dungarlek	39	Panchaytghar, Kumauli
19	Govt. Primary School, Ghunyoli	40	Panchaytghar, Chaturbhoj
20	Govt. Primary School, Bhaisiyachhana	41	Govt. Inter College, sirmoli
21	Govt. Primary School, Baburiyanayal	42	Govt. Primary School, Chanoli

Contd....

Polling Station Level Election Results

Polling Station-wise Votes Secured by Overall Top Five Parties in Almora Assembly in Assembly Election (AE) under Almora Parliamentary Constituency in Uttarakhand (2022)

No. of Polling Station	Winner - Manoj Tewari (INC)	Runner-up - Kailash Sharma (BJP)	3rd - Vinay Kirola (IND)	4th - Amit Joshi (AAP)	5th - Bhanu Prakash Joshi (UKKD)	NOTA	Other	Total Votes Secured
36	200	283	2	5	1	3	6	500
37	246	220	11	13	5	7	11	513
38	166	64	11	4	0	0	4	249
39	134	78	3	8	0	0	6	229
40	119	47	2	2	0	1	6	177
41	52	72	1	0	1	1	0	127
42	109	67	1	4	2	1	0	184
43	83	72	3	6	0	0	2	166
44	16	44	7	3	3	0	1	74
45	49	56	0	3	0	3	0	111
46	320	174	9	13	4	3	3	526
47	241	175	24	13	7	4	13	477
48	128	134	15	7	6	3	4	297
49	190	167	10	4	7	1	6	385
50	155	116	2	5	1	2	5	286
51	174	104	2	11	2	3	9	305
52	154	121	1	8	2	5	5	296
53	148	169	3	8	5	4	9	346
54	102	94	2	1	1	2	4	206
55	173	144	9	5	1	1	8	341
56	40	101	3	3	2	0	7	156
57	53	35	0	2	0	0	2	92
58	87	134	9	7	6	4	4	251
59	62	80	2	5	1	0	4	154
60	98	148	15	2	2	0	6	271
61	116	80	56	11	2	1	3	269
62	98	90	85	7	2	1	10	293
63	197	202	47	11	5	6	8	476
64	81	131	13	5	3	2	9	244
65	57	77	0	6	0	1	3	144
66	150	183	12	4	0	3	9	361
67	202	108	10	3	32	5	5	365
68	229	143	65	10	48	5	16	516
69	131	89	17	1	3	3	28	272
70	93	182	7	4	3	3	5	297

Contd....

Polling Station Level Election Results

Winner, Runner-up and 3rd Party Position & Winning Margin According to Polling Stations in Almora Assembly in Assembly Election (AE) under Almora Parliamentary Constituency in Uttarakhand (2022)

Polling Station Number	Winner Party	Winner Votes (%)	Runner-up Party	Runner-up Votes (%)	Winning Margin Votes (%)	Third Party	Third Party Votes (%)	Other Votes (%)
71	INC	129 (54.43)	BJP	92 (38.82)	37 (15.61)	IND (VK)	5 (2.11)	11 (4.64)
72	BJP	302 (70.07)	INC	115 (26.68)	187 (43.39)	IND (VCT)	4 (0.93)	10 (2.32)
73	INC	48 (52.17)	BJP	40 (43.48)	8 (8.69)	IND (VK)	2 (2.17)	2 (2.17)
74	BJP	326 (51.66)	INC	273 (43.26)	53 (8.4)	IND (VK)	9 (1.43)	23 (3.65)
75	BJP	69 (69.7)	INC	23 (23.23)	46 (46.47)	IND (VK)	4 (4.04)	3 (3.03)
76	BJP	59 (45.38)	INC	58 (44.62)	1 (0.76)	AAP	8 (6.15)	5 (3.85)
77	INC	209 (50.24)	BJP	174 (41.83)	35 (8.41)	IND (VK)	14 (3.37)	19 (4.57)
78	INC	140 (47.62)	BJP	123 (41.84)	17 (5.78)	AAP	21 (7.14)	10 (3.4)
79	INC	160 (45.98)	BJP	126 (36.21)	34 (9.77)	IND (VK)	40 (11.49)	22 (6.32)
80	BJP	139 (55.16)	INC	99 (39.29)	40 (15.87)	IND (VK)	5 (1.98)	9 (3.57)
81	INC	151 (46.18)	BJP	141 (43.12)	10 (3.06)	IND (VK)	18 (5.5)	17 (5.2)
82	INC	44 (48.89)	BJP	35 (38.89)	9 (10)	IND (VK)	4 (4.44)	7 (7.78)
83	INC	150 (50.17)	BJP	109 (36.45)	41 (13.72)	IND (VK)	16 (5.35)	24 (8.03)
84	BJP	323 (53.92)	INC	224 (37.4)	99 (16.52)	AAP	20 (3.34)	32 (5.34)
85	BJP	186 (45.93)	INC	177 (43.7)	9 (2.23)	IND (VK)	15 (3.7)	27 (6.67)
86	INC	271 (53.66)	BJP	191 (37.82)	80 (15.84)	AAP	21 (4.16)	22 (4.36)
87	INC	118 (48.96)	BJP	109 (45.23)	9 (3.73)	AAP	6 (2.49)	8 (3.32)
88	INC	220 (46.41)	BJP	214 (45.15)	6 (1.26)	IND (VK)	25 (5.27)	15 (3.16)
89	BJP	294 (57.09)	INC	162 (31.46)	132 (25.63)	AAP	23 (4.47)	36 (6.99)
90	BJP	108 (59.02)	INC	63 (34.43)	45 (24.59)	IND (VK)	3 (1.64)	9 (4.92)
91	BJP	134 (64.11)	INC	66 (31.58)	68 (32.53)	AAP	4 (1.91)	5 (2.39)
92	INC	124 (46.79)	BJP	124 (46.79)	0 (0)	UKKD	4 (1.51)	13 (4.91)
93	INC	148 (58.96)	BJP	87 (34.66)	61 (24.3)	AAP	7 (2.79)	9 (3.59)
94	INC	267 (44.43)	BJP	264 (43.93)	3 (0.5)	AAP	23 (3.83)	47 (7.82)
95	BJP	187 (51.8)	INC	143 (39.61)	44 (12.19)	IND (VK)	10 (2.77)	21 (5.82)
96	INC	85 (48.57)	BJP	70 (40)	15 (8.57)	IND (VK)	6 (3.43)	14 (8)
97	BJP	267 (49.26)	INC	214 (39.48)	53 (9.78)	IND (VK)	16 (2.95)	45 (8.3)
98	BJP	200 (52.49)	INC	127 (33.33)	73 (19.16)	IND (VK)	24 (6.3)	30 (7.87)
99	BJP	300 (52.45)	INC	227 (39.69)	73 (12.76)	AAP	23 (4.02)	22 (3.85)
100	INC	255 (49.32)	BJP	225 (43.52)	30 (5.8)	AAP	18 (3.48)	19 (3.68)
101	BJP	299 (50.68)	INC	252 (42.71)	47 (7.97)	IND (VK)	13 (2.2)	26 (4.41)
102	BJP	145 (53.9)	INC	70 (26.02)	75 (27.88)	IND (VK)	38 (14.13)	16 (5.95)
103	BJP	131 (40.94)	INC	117 (36.56)	14 (4.38)	IND (VK)	48 (15)	24 (7.5)
104	BJP	192 (47.76)	INC	167 (41.54)	25 (6.22)	IND (VK)	21 (5.22)	22 (5.47)
105	BJP	309 (54.69)	INC	189 (33.45)	120 (21.24)	IND (VK)	34 (6.02)	33 (5.84)

Contd....

Socio-Economic Amenities - Rural

Access to Education Facilities

Particulars	Number of Villages (% of Population)				
	Available	Not Available	If Not Available (Distance of Nearest Facility)		
			A	B	C
Govt. Primary School	147 (80)	101 (20)	90 (15)	3 (0)	1 (0)
Private Primary School	6 (5)	242 (95)	4 (1)	0 (0)	0 (0)
Govt. Middle School	48 (28)	200 (72)	145 (51)	42 (14)	6 (2)
Private Middle School	5 (6)	243 (94)	4 (2)	1 (0)	0 (0)
Govt. Secondary School	28 (15)	220 (85)	131 (53)	67 (22)	17 (6)
Private Secondary School	2 (1)	246 (99)	3 (2)	1 (0)	0 (0)
Govt. Senior Secondary School	22 (11)	226 (89)	119 (48)	85 (31)	19 (8)
Private Senior Secondary School	1 (1)	247 (99)	3 (2)	0 (0)	0 (0)
Govt. Arts and Science Degree College	0 (0)	248 (100)	19 (14)	50 (21)	179 (65)
Private Arts and Science Degree College	0 (0)	248 (100)	0 (0)	0 (0)	0 (0)
Govt. Engineering College	0 (0)	248 (100)	0 (0)	0 (0)	248 (100)
Private Engineering College	0 (0)	248 (100)	0 (0)	0 (0)	0 (0)
Govt. Medicine College	0 (0)	248 (100)	0 (0)	0 (0)	0 (0)
Private Medicine College	0 (0)	248 (100)	0 (0)	0 (0)	248 (100)
Govt. Management Institute	0 (0)	248 (100)	0 (0)	0 (0)	0 (0)
Private Management Institute	0 (0)	248 (100)	19 (14)	49 (21)	180 (65)
Govt. Polytechnic	0 (0)	248 (100)	20 (14)	48 (20)	180 (65)
Private Polytechnic	0 (0)	248 (100)	0 (0)	0 (0)	0 (0)
Govt. Vocational Training School/ITI	3 (2)	245 (98)	33 (20)	62 (27)	150 (51)
Private Vocational Training School/ITI	0 (0)	248 (100)	0 (0)	0 (0)	0 (0)
Govt. Non Formal Training Centre	0 (0)	248 (100)	19 (14)	49 (21)	180 (65)
Private Non Formal Training Centre	0 (0)	248 (100)	0 (0)	0 (0)	0 (0)
Govt. School For Disabled	0 (0)	248 (100)	0 (0)	0 (0)	0 (0)
Private School For Disabled	0 (0)	248 (100)	18 (14)	48 (21)	182 (65)
Government Others	0 (0)	248 (100)	19 (14)	50 (21)	179 (65)
Private Others	0 (0)	248 (100)	0 (0)	0 (0)	0 (0)

Note : Distance A : Less than 5 km; B : Between 5-10 km; C : 10+ km.; Source : Data Analysis is based on 2011 Census.

DISCLAIMER

The Terms of Use and Disclaimer of Datanet India Private Limited (hereinafter referred to as "Datanet") for use of this analysis report of **Almora Assembly Constituency (Almora Vidhan Sabha)** :-

1. **Assembly Factbook™** is a Registered Trade Mark owned by Datanet.
2. All the maps are sketched and graphical representation only and have not been drawn to the scale and also not to represent the actual geographical area or boundary of the unit.
3. The data for the aforesaid analysis is based on authentic sources and has been culled from the various publications of Census, CSO and NSSO for district and block level data, various central and state government departments, Central & State Elections Commissions and the concerned Returning Officers' releases, Electoral Rolls, Election results and allied publications, internal assessment, surveys, estimates and analysis. Therefore, certain adjustment of data at micro level may have been done to arrive closer to the macro data.
4. Data have been provided on an "As Is" and "As AVAILABLE" basis
5. The colours shown in the maps or diagram and charts of a particular party, alliance or AC are indicative and do not represent them.
6. This publication which includes maps, sheets, graphs and data would be the property under copyright of Datanet only. The user may use these for its internal study, analysis and research purposes. It's public display, re-selling or any commercial uses by the user are not allowed.
7. Datanet has taken due care and caution in compilation and processing of data and allied information, but does not guarantee the accuracy, adequacy or completeness of any information/analysis and will be not responsible for any errors or omissions or for the results obtained from the use of such information/analysis.
8. All the contents for the publication have been culled from various authentic sources and Datanet reasonably believes such sources to be reliable, but does not make any representations, express or implied as to the accuracy or fitness of use of such information. The information or contents of the information/analysis do not constitute advice and should not be relied upon in making (or refraining from making) any decision. Any reliance placed upon the information provided by Datanet is the sole responsibility and strictly at the user's risk.
9. In no event will Datanet be liable for any damages (including, without limitation, damages for loss of business projects, or loss of profits) arising in contract, tort or otherwise from the use of or inability to use any of its contents, or from any action taken (or refrained from being taken) as a result of using the analysis or any of its contents. Datanet its directors, owners, editors, officials, employees, distributor and agents or any associate will not be liable for any errors in the information contained or any consequences arising from the use of the contents of the provided information/analysis.
10. If any provision of these terms and conditions is held invalid or illegal or unenforceable for any reason by any court of competent jurisdiction, such provision shall be severed and the remainder of provisions of the terms and conditions shall continue in full force and effect as if the Term of Use had been executed with the invalid, illegal or unenforceable provision eliminated.
11. If there are any discrepancies in the information provided, please bring it to attention of Datanet for suitable rectification measures.

Buy Online This Complete Book At
Datanet India eBooks Store

www.indiastatpublications.com

or go directly at

[http://www.indiastatpublications.com/
Assembly_factbook/Uttarakhand/Almora/ Almora](http://www.indiastatpublications.com/Assembly_factbook/Uttarakhand/Almora/Almora)

 **india**stat**elections**

ISBN : 978-93-5822-504-4



9 789358 225044