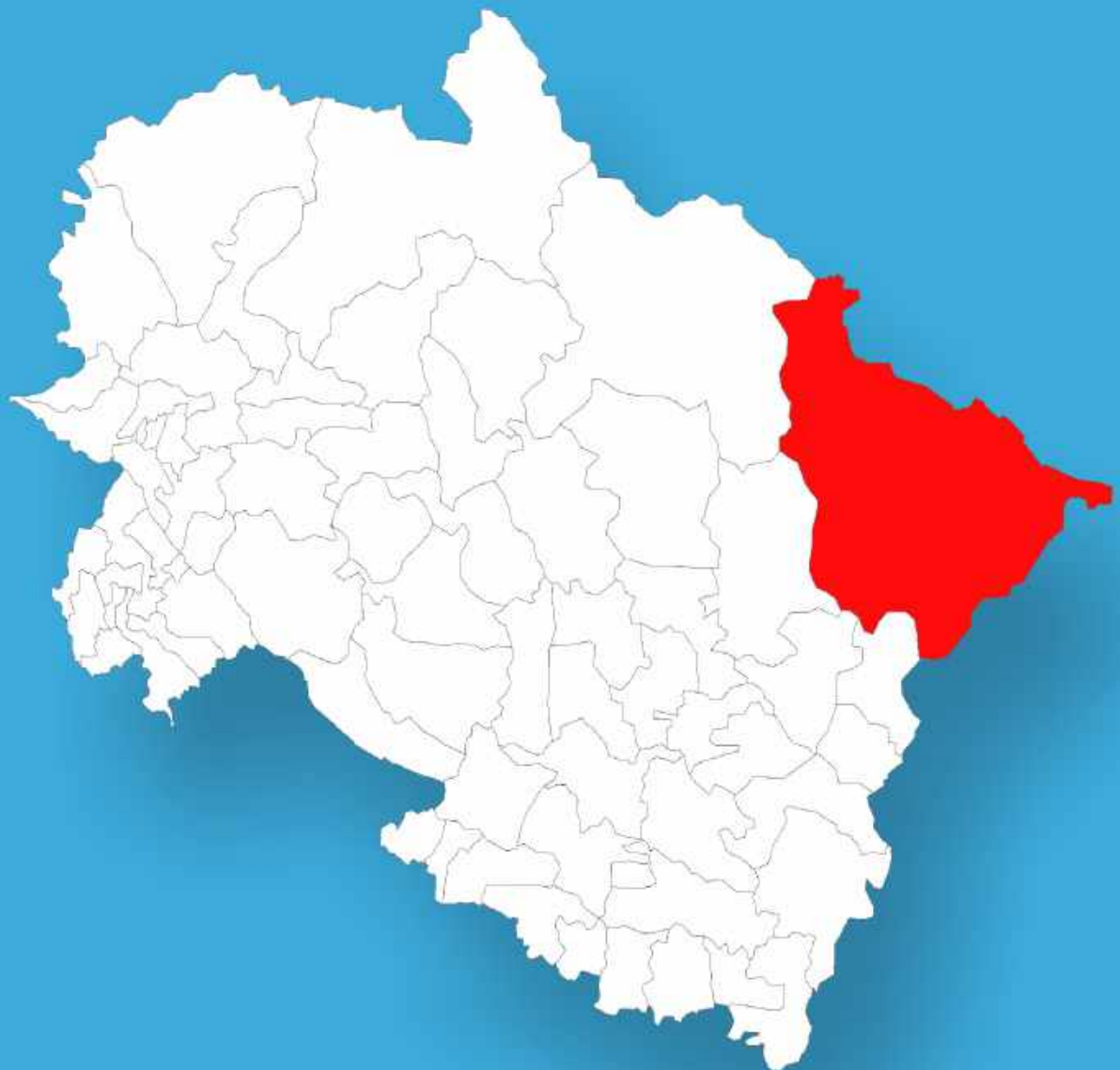




Uttarakhand

Assembly Factbook™

Dharchula Assembly Constituency



Key Electoral Data of Dharchula
Assembly Constituency (Vidhan Sabha)

Uttarakhand

Assembly Factbook™

Dharchula Assembly Constituency



Dharchula Vidhan Sabha

Editor & Director

Dr. R.K. Thukral

Research Editor

Dr. Shafeeq Rahman

**Compiled, Researched and Published by
Datanet India Pvt. Ltd.**

D-100, 1st Floor,

Okhla Industrial Area, Phase-I,

New Delhi- 110020.

Ph.: 91-11- 43580781-84

Email : support@indiastatpublications.com

Website : www.indiastatelections.com

Online Book Store :

www.indiastatpublications.com

Report No. : AFB/UK-042-0125

ISBN : 978-93-5822-608-9

First Edition : January, 2018

Eighth Updated Edition : January, 2025

Price : Rs.11500/-

US\$ 310

© Datanet India Pvt. Ltd.

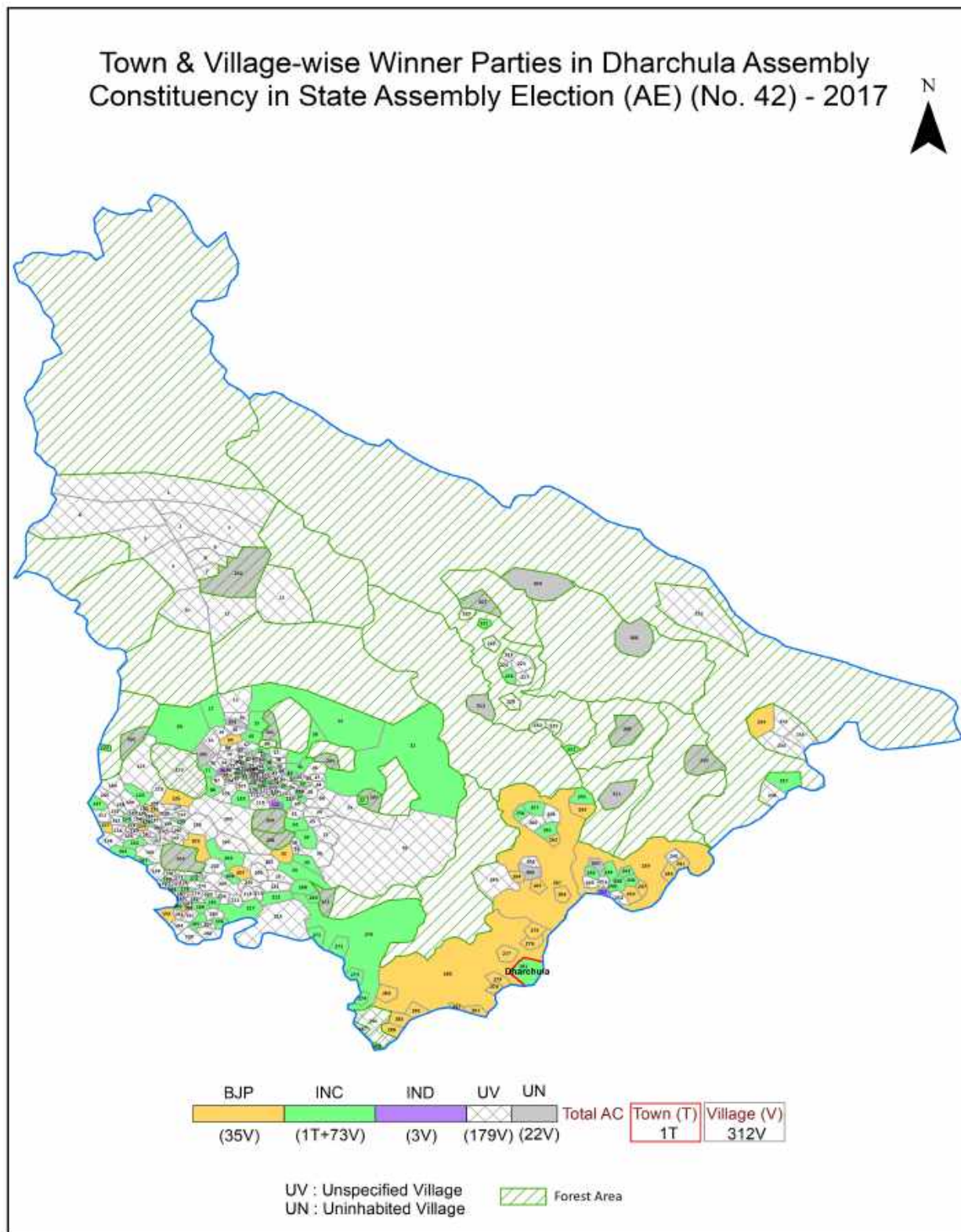
All rights reserved. No part of this book may be reproduced, stored in a retrieval system or transmitted in any form or by any means, mechanical photocopying, photographing, scanning, recording or otherwise without the prior written permission of the publisher. Please refer to Disclaimer at page no. 168 for the use of this publication.

Printed in India

Contents

No.	Particulars	Page No.
	Introduction	
1	Assembly Constituency - (Vidhan Sabha) at a Glance Features of Assembly as per Delimitation Commission of India (2008)	1-2
	Location and Political Maps	
2	Location Map Boundaries of Assembly Constituency - (Vidhan Sabha) in District Boundaries of Assembly Constituency under Parliamentary Constituency - (Lok Sabha) Town & Village-wise Winner Parties- 2024, 2022, 2019, 2017, 2014, 2012 and 2009	3-11
	Administrative Setup (2011)	
3	District Sub-district Towns Villages Inhabited Villages Uninhabited Villages Village Panchayat Intermediate Panchayat	12-26
	Demographics (2011)	
4	Population Households Rural/Urban Population Towns and Villages by Population Size Sex Ratio (Total & 0-6 Years) Religious Population Social Population Literacy Rate	27-28
	Electoral Features	
5	Important Dates of Last Elections Held Electors by Gender Service Electors Voters Voters Turnout Polling Stations & Average Number of Electors per Polling Station Electors by Age Group Present Elected Representatives	29-34
	Historical Summary Election Results	
6	Vote Share of Major Parties Winning Margin (Number & Percentage) Polarity of Parties Summary Result of Assembly Segment of Parliamentary Election 2024, 2019, 2014, 2009, 2004 and 1999 Summary Result of Assembly Elections 2022, 2017, 2012, 2007 and 2002	35-47
	Polling Station Level Election Results	
7	Name and Number of Polling Station 2024, 2022, 2019, 2017, 2014, 2012 and 2009 Polling Station-wise Electors, Voters & Voters Turnout 2024, 2022, 2019, 2017, 2014, 2012 and 2009 Polling Station wise Elections Results 2024, 2022, 2019, 2017, 2014, 2012 and 2009	48-140
8	Panchayat and Local Bodies Election Results Panchayat Result 2014 Urban Local Bodies Result 2013	141-148
9	Share of Assembly Constituency Share of Assembly Constituency - (Vidhan Sabha) in State, District and Parliamentary Constituency - (Lok Sabha)	149
10	Socio-Economic Amenities (2011) Access to Administrative Units Agricultural, Manufacturing and Industrial Commodities Demographic Indicators Education Health & Manpower Drinking Water Supply Sanitation Entertainment and Recreations Infrastructure Power Food Allocation Distribution and Marketing of Agriculture Commodities Infrastructure Transport and Road Infrastructure Communication Banking and Financial Services Land Use Irrigation Source	150-165
11	Abbreviation & Sources	166-167
12	Disclaimer	168

Location & Political Map



Administrative Setup

List of Village Panchayat & Intermediate Panchayat (Block) Name - 2011

Village Name	Village Panchayat Name	Intermediate Panchayat Name
Akhoriya	Cheri Chimla	Munsiari
Alam	Alam Darma	Munsiari
Arkhet	Sain Rathi	Munsiari
Baidu Mahar	Baidu Mahar	Munsiari
Baiga	Madkot	Munsiari
Bajaili	Basari	Munsiari
Bajeta	Bajeta	Munsiari
Baling	Baling	Dharchula
Baluwakot	Baluwakot	Dharchula
Bamangaon	Bamangaon	Munsiari
Bamangaon Khalsa	Talla Bhainskot	Munsiari
Bangapani	Bangapani	Dharchula
Baragaon	Bara	Munsiari
Baram	Baram	Dharchula
Barapata	Baimahar	Munsiari
Barniya Gaon	Barniya Gaon	Munsiari
Basantkot	Basantkot	Munsiari
Basari	Basari	Munsiari
Basbagar	Basbagar	Munsiari
Bata	Bata	Munsiari
Bathi Gul	Bathi Gul	Munsiari
Bauling	Bauling	Dharchula
Baun	Baun	Dharchula
Belsa Bagar	Hupuli	Munsiari
Bhadeli	Chauna	Munsiari
Bhaiskhal	Bhaiskhal	Munsiari
Bhakunda	Khatera	Munsiari
Bhandari Gaon	Bhurting	Munsiari
Bhatkura	Vasantkot	Munsiari

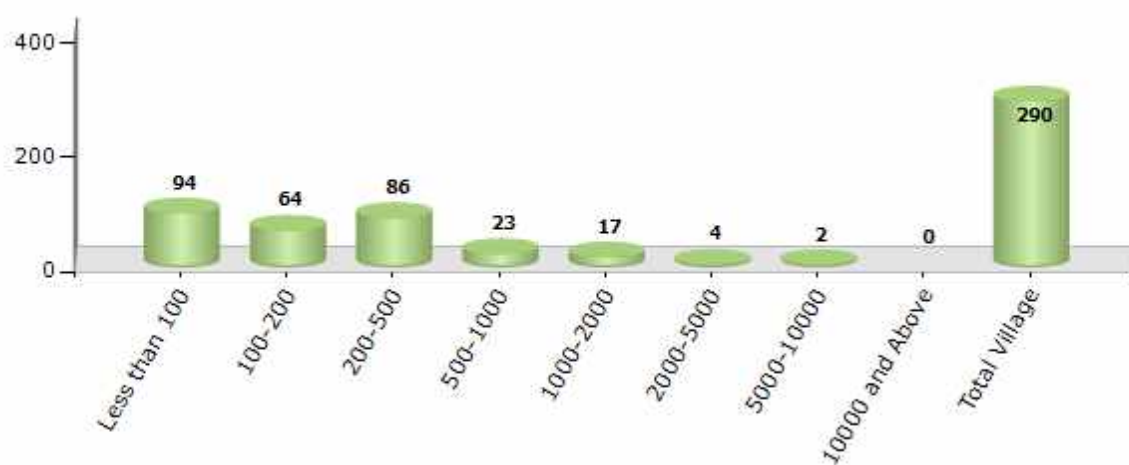
Contd....

Demographics

Number of Villages by Population Size - 2011

Less than 100	100-200	200-500	500-1000	1000-2000	2000-5000	5000-10000	10000 and Above	Total Village
94	64	86	23	17	4	2	0	290

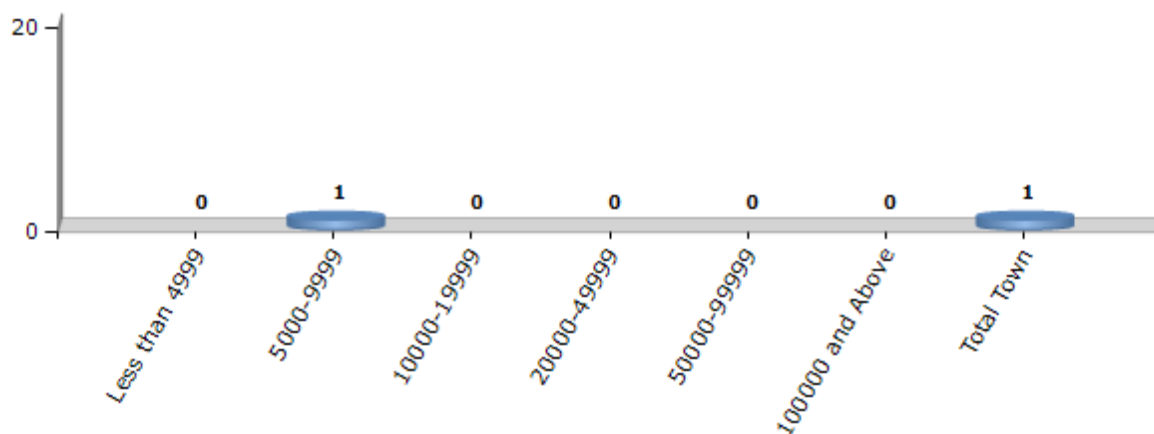
Number of Villages by Population Size - 2011



Number of Towns by Population Size - 2011

Less than 4999	5000-9999	10000-19999	20000-49999	50000-99999	100000 and Above	Total Town
0	1	0	0	0	0	1

Number of Towns by Population Size - 2011

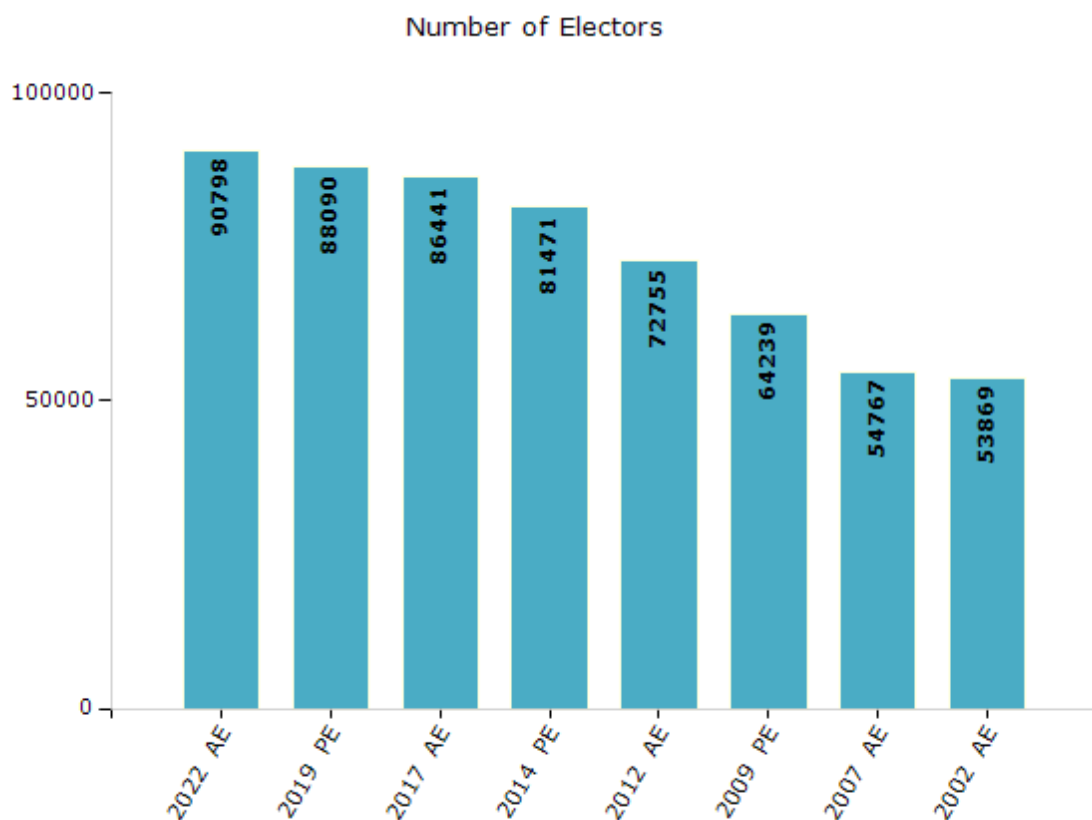


Electoral Features

Electors by Male & Female

Year	Male	Female	Others	Total
2022 AE	46674	44124	0	90798
2019 PE	45181	42909	0	88090
2017 AE	43234	43207	0	86441
2014 PE	40880	40587	4	81471
2012 AE	36306	36449	0	72755

Year	Male	Female	Others	Total
2009 PE	31016	33223	-	64239
2007 AE	26328	28439	-	54767
2004 PE	-	-	-	-
2002 AE	26393	27476	-	53869

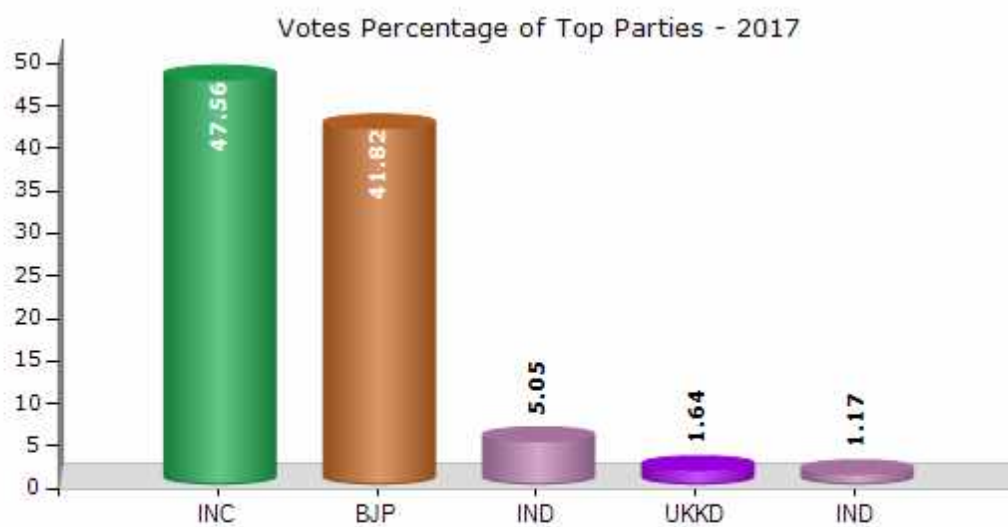


Note : AE : Assembly Election, PE : Assembly Segment of Parliamentary Election

Historical Summary Election Results

Summary Result of Assembly Election - 2017

Candidate Name	Party	Votes	Votes %
Harish Singh	INC	25597	47.56
Virendra Singh Pal	BJP	22512	41.82
Durga Prashad	IND	2717	5.05
Lal Singh	UKKD	883	1.64
Devindra Singh	IND	631	1.17
Virendra Singh	IND	540	1
Jitendra Kumar	BSP	445	0.83
	NOTA	500	0.93



Polling Station Level Election Results

Number and Name of Polling Stations (PS) (2022)

Number of Polling Stations	Name of Polling Stations	Number of Polling Stations	Name of Polling Stations
1	Govt. Primary School Bhawan Pato	22	Govt. Primary School Bhawan Darama
2	Govt. Primary School Bhawan Bui	23	Govt. Higher Secondary School Bhawan Sera
3	Govt. Primary School Bhawan Saipolu	24	Govt. Primary School Tanga
4	Govt. Primary School Bhawan Qwari Jimiya	25	Govt. Primary School Bhawan Umargada
5	Govt. Primary School Bhawan Jaiti	26	Govt. H.S. School Bouna
6	Govt. Primary School Bhawan Sarmoli	27	Govt. Primary School Golfa
7	Govt. Primary School Bhawan (East Part) Tikasen (East Part)	28	Govt. Junior High School Tomik
8	Block Sansadhan Kendra Tiksen	29	Govt. Inter College Bhawan Madkot
9	Govt. Primary School Bhawan Dhapa	30	Govt. Primary School Bhawan Rapti
10	Govt. Primary School Bhawan Dharkot (Milam)	31	Govt. Junior High School Bhawn Walthi
11	Govt. Primary School Bhawan Darati	32	Govt. Primary School Bhawan Jouldhunga
12	Govt. Primary School Bhawan Kawadhar	33	Govt. H.S. School Basantkot
13	Govt. Primary School Bhawan Barniyagaon	34	Govt. Junior High School Uchchheti
14	Govt. Primary School Bhawan Sevila	35	Govt. Inter College Bhawan Kultham
15	Govt. Primary School Bhawan Jaspur Khan	36	Govt. Primary School Bhawan Badanidhar
16	Govt. Junior High School Choura	37	Govt. Junior High School Ringu
17	Govt. Primary School Bhawan Harkot	38	Govt. Primary School Bhawan Virthi
18	Govt. Inter College Bhawan Josha	39	Govt. Primary School Bhawan Girgaon
19	Govt. Primary School Bhawan Gandhinagar	40	Govt. Primary School Bhawan Ginni
20	Govt. Primary School Bhawani Mawani Dawani	41	Govt. Primary School Bhawan Bala
21	Govt. P.S. Gharudai (mawani Dawani)	42	Govt. Primary School Bhawan Namik

Contd....

Polling Station Level Election Results

Polling Station-wise Votes Secured by Overall Top Five Parties in Dharchula Assembly in Assembly Election (AE) under Almora Parliamentary Constituency in Uttarakhand (2022)

No. of Polling Station	Winner - Harish Singh Dhami (INC)	Runner-up - Dhan Singh Dhami (Dhan Da) (BJP)	3rd - Jeevan Singh Thakur (IND)	4th - Narayan Ram (AAP)	5th - Kailash Singh Pangtey (IND)	NOTA	Other	Total Votes Secured
36	163	81	2	3	1	0	6	256
37	397	57	1	8	6	3	8	480
38	156	140	0	6	1	0	0	303
39	101	170	11	2	8	0	5	297
40	117	125	4	6	3	4	7	266
41	217	281	14	5	4	6	4	531
42	187	95	7	4	3	1	5	302
43	209	141	1	2	7	2	6	368
44	115	87	1	1	4	1	3	212
45	270	320	8	5	16	10	13	642
46	72	112	10	7	4	11	9	225
47	304	252	17	11	13	16	7	620
48	247	224	20	7	4	6	6	514
49	252	176	5	10	17	3	7	470
50	142	209	4	1	17	2	6	381
51	267	276	5	9	4	2	8	571
52	56	89	0	2	7	3	0	157
53	178	284	14	5	13	10	11	515
54	228	258	6	11	1	8	15	527
55	180	181	3	5	2	4	3	378
56	151	216	5	5	6	4	9	396
57	378	252	5	5	4	2	7	653
58	271	281	8	7	1	4	8	580
59	93	193	7	2	2	3	7	307
60	156	93	4	5	6	6	2	272
61	83	7	1	1	1	1	0	94
62	113	116	0	5	2	1	2	239
63	63	104	0	1	3	0	2	173
64	111	136	3	3	4	3	8	268
65	161	182	5	9	9	4	7	377
66	97	75	0	4	1	1	4	182
67	114	134	1	1	2	0	3	255
68	170	73	1	4	1	2	4	255
69	111	43	1	1	0	0	1	157
70	107	121	4	0	4	2	5	243

Contd....

Polling Station Level Election Results

Winner, Runner-up and 3rd Party Position & Winning Margin According to Polling Stations in Dharchula Assembly in Assembly Election (AE) under Almora Parliamentary Constituency in Uttarakhand (2022)

Polling Station Number	Winner Party	Winner Votes (%)	Runner-up Party	Runner-up Votes (%)	Winning Margin Votes (%)	Third Party	Third Party Votes (%)	Other Votes (%)
71	INC	295 (71.6)	BJP	103 (25)	192 (46.6)	AAP	5 (1.21)	9 (2.18)
72	INC	61 (68.54)	BJP	20 (22.47)	41 (46.07)	AAP	2 (2.25)	6 (6.74)
73	INC	65 (56.03)	BJP	45 (38.79)	20 (17.24)	IND (JST)	3 (2.59)	3 (2.59)
74	BJP	128 (61.24)	INC	76 (36.36)	52 (24.88)	AAP	3 (1.44)	2 (0.96)
75	BJP	152 (51.53)	INC	135 (45.76)	17 (5.77)	BSP	3 (1.02)	5 (1.69)
76	BJP	390 (73.45)	INC	120 (22.6)	270 (50.85)	IND (JST)	8 (1.51)	13 (2.45)
77	BJP	148 (71.84)	INC	53 (25.73)	95 (46.11)	AAP	2 (0.97)	3 (1.46)
78	INC	153 (73.21)	BJP	48 (22.97)	105 (50.24)	AAP	3 (1.44)	5 (2.39)
79	INC	109 (78.99)	BJP	27 (19.57)	82 (59.42)	BSP	1 (0.72)	1 (0.72)
80	INC	122 (72.19)	BJP	41 (24.26)	81 (47.93)	AAP	2 (1.18)	4 (2.37)
81	BJP	95 (45.89)	INC	91 (43.96)	4 (1.93)	AAP	15 (7.25)	6 (2.9)
82	INC	102 (69.39)	BJP	41 (27.89)	61 (41.5)	IND (JST)	2 (1.36)	2 (1.36)
83	BJP	282 (74.21)	INC	83 (21.84)	199 (52.37)	BSP	6 (1.58)	9 (2.37)
84	INC	140 (55.12)	BJP	113 (44.49)	27 (10.63)	AAP	1 (0.39)	0 (0)
85	INC	123 (49.8)	BJP	116 (46.96)	7 (2.84)	AAP	4 (1.62)	4 (1.62)
86	INC	86 (61.43)	BJP	52 (37.14)	34 (24.29)	UKKD	1 (0.71)	1 (0.71)
87	BJP	150 (52.45)	INC	127 (44.41)	23 (8.04)	AAP	4 (1.4)	5 (1.75)
88	BJP	196 (56.65)	INC	122 (35.26)	74 (21.39)	UKKD	7 (2.02)	21 (6.07)
89	BJP	301 (58.22)	INC	195 (37.72)	106 (20.5)	IND (KSP)	8 (1.55)	13 (2.51)
90	BJP	106 (51.71)	INC	97 (47.32)	9 (4.39)	AAP	2 (0.98)	0 (0)
91	BJP	75 (60.48)	INC	47 (37.9)	28 (22.58)	IND (JST)	1 (0.81)	1 (0.81)
92	INC	50 (55.56)	BJP	36 (40)	14 (15.56)	IND (JST)	1 (1.11)	3 (3.33)
93	BJP	328 (55.22)	INC	220 (37.04)	108 (18.18)	IND (JST)	21 (3.54)	25 (4.21)
94	BJP	236 (76.13)	INC	66 (21.29)	170 (54.84)	IND (JST)	3 (0.97)	5 (1.61)
95	BJP	147 (54.24)	INC	118 (43.54)	29 (10.7)	IND (KSP)	2 (0.74)	4 (1.48)
96	BJP	335 (77.73)	INC	70 (16.24)	265 (61.49)	IND (JST)	6 (1.39)	20 (4.64)
97	INC	281 (60.04)	BJP	162 (34.62)	119 (25.42)	AAP	8 (1.71)	17 (3.63)
98	NV	NV (NV)	NV	NV (NV)	NV (NV)	NV	NV (NV)	NV (NV)
99	BJP	127 (48.29)	INC	115 (43.73)	12 (4.56)	IND (JST)	14 (5.32)	7 (2.66)
100	INC	236 (49.58)	BJP	177 (37.18)	59 (12.4)	BSP	28 (5.88)	35 (7.35)
101	BJP	92 (71.88)	INC	29 (22.66)	63 (49.22)	BSP	2 (1.56)	5 (3.91)
102	INC	158 (52.67)	BJP	113 (37.67)	45 (15)	IND (JST)	9 (3)	20 (6.67)
103	INC	111 (45.49)	BJP	105 (43.03)	6 (2.46)	IND (JST)	10 (4.1)	18 (7.38)
104	INC	184 (53.8)	BJP	127 (37.13)	57 (16.67)	IND (JST)	12 (3.51)	19 (5.56)
105	INC	197 (54.72)	BJP	140 (38.89)	57 (15.83)	IND (JST)	6 (1.67)	17 (4.72)

Contd....

Socio-Economic Amenities - Rural

Access to Education Facilities

Particulars	Number of Villages (% of Population)				
	Available	Not Available	If Not Available (Distance of Nearest Facility)		
			A	B	C
Govt. Primary School	221 (97)	69 (3)	57 (3)	9 (0)	2 (0)
Private Primary School	9 (6)	281 (94)	1 (0)	0 (0)	0 (0)
Govt. Middle School	83 (65)	207 (35)	130 (18)	35 (7)	41 (10)
Private Middle School	3 (3)	287 (97)	0 (0)	1 (0)	0 (0)
Govt. Secondary School	23 (20)	267 (80)	111 (31)	79 (21)	77 (27)
Private Secondary School	2 (3)	288 (97)	0 (0)	0 (0)	0 (0)
Govt. Senior Secondary School	17 (16)	273 (84)	80 (27)	97 (26)	96 (31)
Private Senior Secondary School	1 (1)	289 (99)	0 (0)	0 (0)	0 (0)
Govt. Arts and Science Degree College	3 (5)	287 (95)	11 (4)	30 (10)	246 (81)
Private Arts and Science Degree College	0 (0)	290 (100)	0 (0)	0 (0)	0 (0)
Govt. Engineering College	1 (0)	289 (100)	0 (0)	0 (0)	70 (56)
Private Engineering College	0 (0)	290 (100)	0 (0)	0 (0)	219 (44)
Govt. Medicine College	0 (0)	290 (100)	0 (0)	0 (0)	290 (100)
Private Medicine College	0 (0)	290 (100)	0 (0)	0 (0)	0 (0)
Govt. Management Institute	0 (0)	290 (100)	0 (0)	0 (0)	0 (0)
Private Management Institute	0 (0)	290 (100)	0 (0)	0 (0)	290 (100)
Govt. Polytechnic	0 (0)	290 (100)	0 (0)	0 (0)	290 (100)
Private Polytechnic	0 (0)	290 (100)	0 (0)	0 (0)	0 (0)
Govt. Vocational Training School/ITI	1 (0)	289 (100)	0 (0)	2 (1)	287 (98)
Private Vocational Training School/ITI	0 (0)	290 (100)	0 (0)	0 (0)	0 (0)
Govt. Non Formal Training Centre	46 (18)	244 (82)	110 (20)	26 (6)	108 (56)
Private Non Formal Training Centre	2 (2)	288 (98)	0 (0)	0 (0)	0 (0)
Govt. School For Disabled	0 (0)	290 (100)	0 (0)	0 (0)	0 (0)
Private School For Disabled	0 (0)	290 (100)	0 (0)	0 (0)	290 (100)
Government Others	1 (0)	289 (100)	12 (9)	30 (9)	247 (81)
Private Others	0 (0)	290 (100)	0 (0)	0 (0)	0 (0)

Note : Distance A : Less than 5 km; B : Between 5-10 km; C : 10+ km.; Source : Data Analysis is based on 2011 Census.

DISCLAIMER

The Terms of Use and Disclaimer of Datanet India Private Limited (hereinafter referred to as "Datanet") for use of this analysis report of **Dharchula Assembly Constituency (Dharchula Vidhan Sabha)** :-

1. **Assembly Factbook™** is a Registered Trade Mark owned by Datanet.
2. All the maps are sketched and graphical representation only and have not been drawn to the scale and also not to represent the actual geographical area or boundary of the unit.
3. The data for the aforesaid analysis is based on authentic sources and has been culled from the various publications of Census, CSO and NSSO for district and block level data, various central and state government departments, Central & State Elections Commissions and the concerned Returning Officers' releases, Electoral Rolls, Election results and allied publications, internal assessment, surveys, estimates and analysis. Therefore, certain adjustment of data at micro level may have been done to arrive closer to the macro data.
4. Data have been provided on an "As Is" and "As AVAILABLE" basis
5. The colours shown in the maps or diagram and charts of a particular party, alliance or AC are indicative and do not represent them.
6. This publication which includes maps, sheets, graphs and data would be the property under copyright of Datanet only. The user may use these for its internal study, analysis and research purposes. It's public display, re-selling or any commercial uses by the user are not allowed.
7. Datanet has taken due care and caution in compilation and processing of data and allied information, but does not guarantee the accuracy, adequacy or completeness of any information/analysis and will be not responsible for any errors or omissions or for the results obtained from the use of such information/analysis.
8. All the contents for the publication have been culled from various authentic sources and Datanet reasonably believes such sources to be reliable, but does not make any representations, express or implied as to the accuracy or fitness of use of such information. The information or contents of the information/analysis do not constitute advice and should not be relied upon in making (or refraining from making) any decision. Any reliance placed upon the information provided by Datanet is the sole responsibility and strictly at the user's risk.
9. In no event will Datanet be liable for any damages (including, without limitation, damages for loss of business projects, or loss of profits) arising in contract, tort or otherwise from the use of or inability to use any of its contents, or from any action taken (or refrained from being taken) as a result of using the analysis or any of its contents. Datanet its directors, owners, editors, officials, employees, distributor and agents or any associate will not be liable for any errors in the information contained or any consequences arising from the use of the contents of the provided information/analysis.
10. If any provision of these terms and conditions is held invalid or illegal or unenforceable for any reason by any court of competent jurisdiction, such provision shall be severed and the remainder of provisions of the terms and conditions shall continue in full force and effect as if the Term of Use had been executed with the invalid, illegal or unenforceable provision eliminated.
11. If there are any discrepancies in the information provided, please bring it to attention of Datanet for suitable rectification measures.

**Buy Online This Complete Book At
Datanet India eBooks Store**

www.indiastatpublications.com

or go directly at

**[http://www.indiastatpublications.com/
Assembly_factbook/Uttarakhand/Almora/ Dharchula](http://www.indiastatpublications.com/Assembly_factbook/Uttarakhand/Almora/Dharchula)**

 **indiastat**elections

ISBN : 978-93-5822-608-9



9 789358 226089