



Uttarakhand

Assembly Factbook™

Ranikhet Assembly Constituency



Key Electoral Data of Ranikhet
Assembly Constituency (Vidhan Sabha)

Uttarakhand

Assembly Factbook™

Ranikhet Assembly Constituency



Ranikhet Vidhan Sabha

Editor & Director

Dr. R.K. Thukral

Research Editor

Dr. Shafeeq Rahman

**Compiled, Researched and Published by
Datanet India Pvt. Ltd.**

D-100, 1st Floor,
Okhla Industrial Area, Phase-I,
New Delhi- 110020.
Ph.: 91-11- 43580781-84
Email : support@indiastatpublications.com
Website : www.indiastatelections.com

Online Book Store :

www.indiastatpublications.com

Report No. : AFB/UK-050-0123

ISBN : 978-93-5822-606-5

First Edition : January, 2018

Sixth Updated Edition : January, 2023

Price : Rs.11500/-

US\$ 310

© Datanet India Pvt. Ltd.

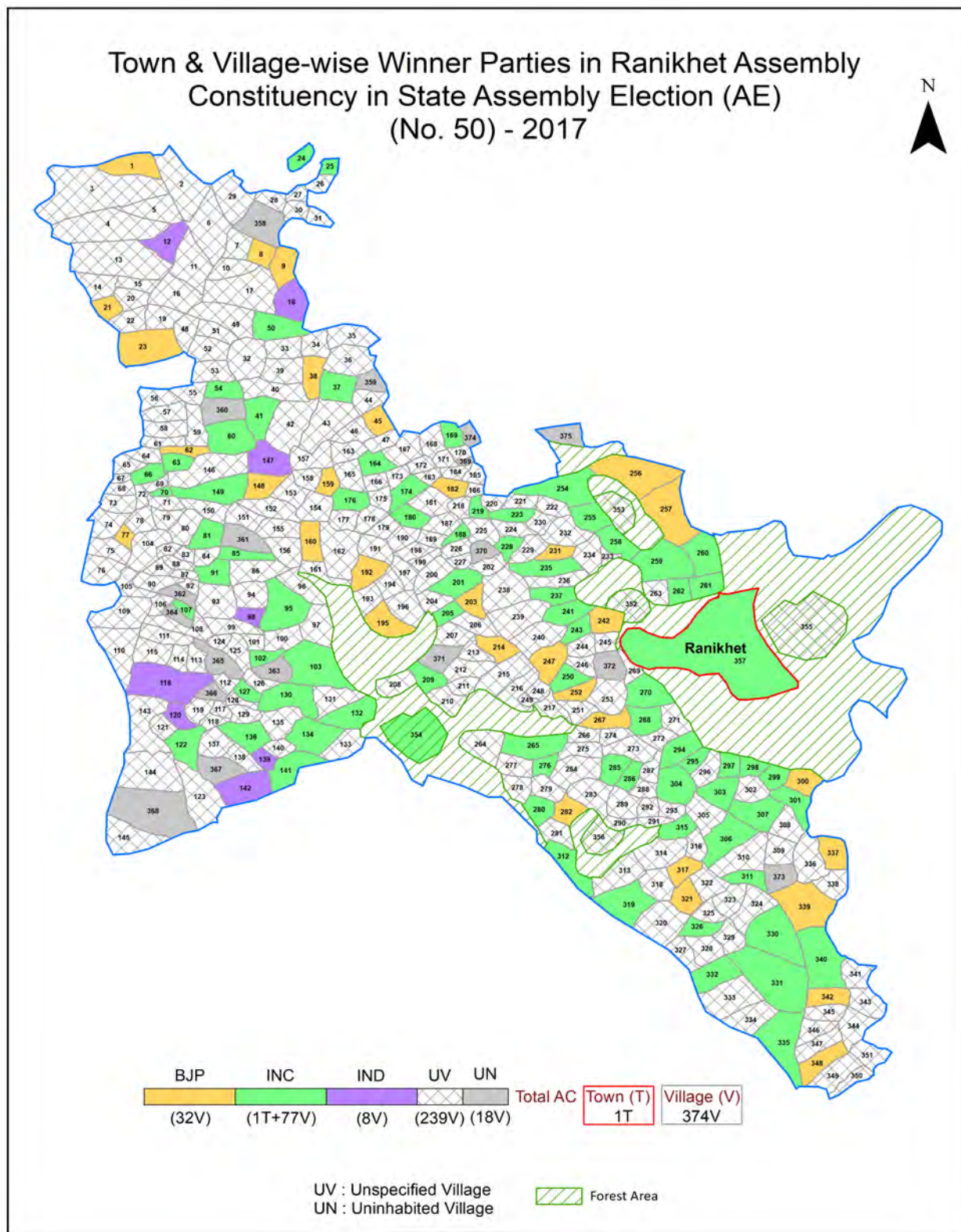
All rights reserved. No part of this book may be reproduced, stored in a retrieval system or transmitted in any form or by any means, mechanical photocopying, photographing, scanning, recording or otherwise without the prior written permission of the publisher. Please refer to Disclaimer at page no. 164 for the use of this publication.

Printed in India

Contents

No.	Particulars	Page No.
	Introduction	
1	Assembly Constituency - (Vidhan Sabha) at a Glance Features of Assembly as per Delimitation Commission of India (2008)	1-2
	Location and Political Maps	
2	Location Map Boundaries of Assembly Constituency - (Vidhan Sabha) in District Boundaries of Assembly Constituency under Parliamentary Constituency - (Lok Sabha) Town & Village-wise Winner Parties- 2022, 2019, 2017, 2014, 2012 and 2009	3-11
	Administrative Setup (2011)	
3	District Sub-district Towns Villages Inhabited Villages Uninhabited Villages Village Panchayat Intermediate Panchayat	12-30
	Demographics (2011)	
4	Population Households Rural/Urban Population Towns and Villages by Population Size Sex Ratio (Total & 0-6 Years) Religious Population Social Population Literacy Rate	31-32
	Electoral Features	
5	Important Dates of Last Elections Held Electors by Gender Service Electors Voters Voters Turnout Polling Stations & Average Number of Electors per Polling Station Electors by Age Group Present Elected Representatives	33-38
	Historical Summary Election Results	
6	Vote Share of Major Parties Winning Margin (Number & Percentage) Polarity of Parties Summary Result of Assembly Segment of Parliamentary Election 2019, 2014, 2009, 2004 and 1999 Summary Result of Assembly Elections 2022, 2017, 2012, 2007 and 2002	39-51
	Polling Station Level Election Results	
7	Name and Number of Polling Station 2022, 2019, 2017, 2014, 2012 and 2009 Polling Station-wise Electors, Voters & Voters Turnout 2022, 2019, 2017, 2014, 2012 and 2009 Polling Station wise Elections Results 2022, 2019, 2017, 2014, 2012 and 2009	52-137
8	Panchayat and Local Bodies Election Results Panchayat Result 2014	138-144
	Share of Assembly Constituency	
9	Share of Assembly Constituency - (Vidhan Sabha) in State, District and Parliamentary Constituency - (Lok Sabha)	145
	Socio-Economic Amenities (2011)	
10	Access to Administrative Units Agricultural, Manufacturing and Industrial Commodities Demographic Indicators Education Health & Manpower Drinking Water Supply Sanitation Entertainment and Recreations Infrastructure Power Food Allocation Distribution and Marketing of Agriculture Commodities Infrastructure Transport and Road Infrastructure Communication Banking and Financial Services Land Use Irrigation Source	146-161
11	Abbreviation & Sources	162-163
12	Disclaimer	164

Location & Political Map



Administrative Setup

List of Village Panchayat & Intermediate Panchayat (Block) Name - 2011

Village Name	Village Panchayat Name	Intermediate Panchayat Name
Adagoli	Naikana	Bhikiyasain
Adborha	Mohanri	Bhikiyasain
Airad	Airad	Tarikhet
Airari	Airari	Tarikhet
Airoli	Airoli	Tarikhet
Amoli	Amoli	Bhikiyasain
Amyari	Amyari	Tarikhet
Aswal Kotyura	Aswal Kotyura	Tarikhet
Badhan Khet	Timila	Tarikhet
Bagarh	Bajan	Bhikiyasain
Bagdawar	Bagdawar	Bhikiyasain
Baghan	Baghan	Tarikhet
Bagwali Rawtila	Bagwali	Tarikhet
Bahnoli	Bahnoli	Bhikiyasain
Baina	Baina	Tarikhet
Baina	Baina	Tarikhet
Bajan	Bajan	Bhikiyasain
Bajeena	Bajeena	Tarikhet
Bajol	Bamasyon	Tarikhet
Balana	Balana	Tarikhet
Baliyali	Chapar	Tarikhet
Baman Chauna	Baman Chauna	Bhikiyasain
Bamasyon	Bamasyon	Tarikhet
Bamyoli	Bamyoli	Bhikiyasain
Bangora	Bangora	Tarikhet
Barikote	Barikote	Bhikiyasain
Barkat Bag	Kapina	Tarikhet
Barswaltana	Mahartana	Bhikiyasain
Basot	Basot	Bhikiyasain

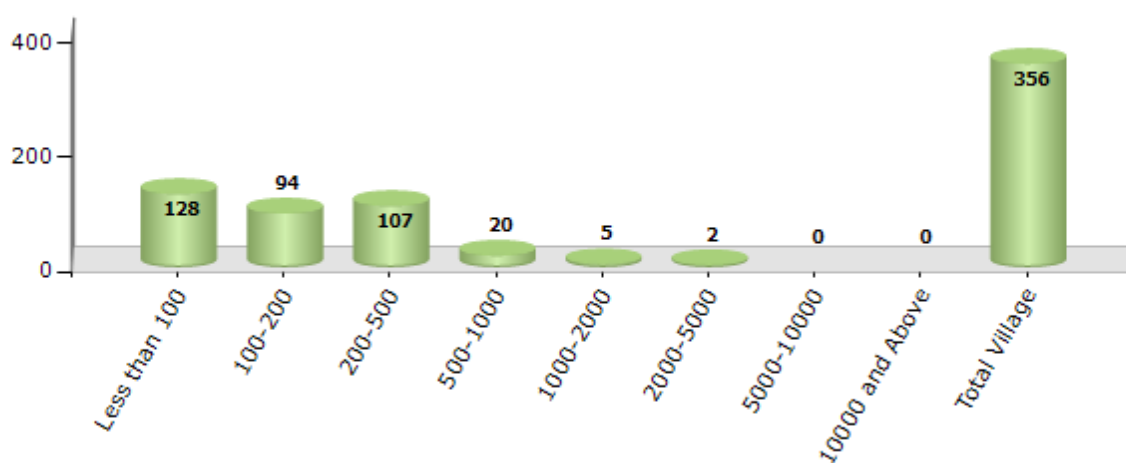
Contd....

Demographics

Number of Villages by Population Size - 2011

Less than 100	100-200	200-500	500-1000	1000-2000	2000-5000	5000-10000	10000 and Above	Total Village
128	94	107	20	5	2	0	0	356

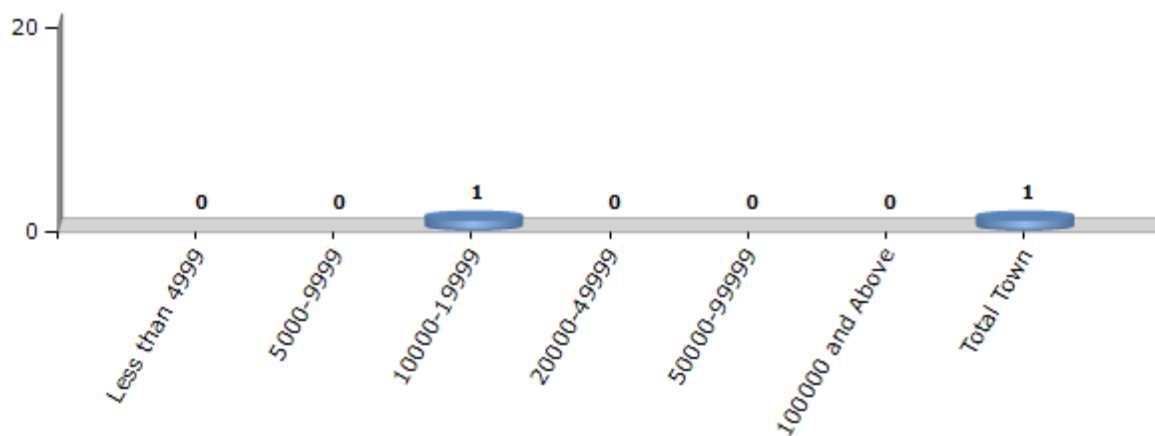
Number of Villages by Population Size - 2011



Number of Towns by Population Size - 2011

Less than 4999	5000-9999	10000-19999	20000-49999	50000-99999	100000 and Above	Total Town
0	0	1	0	0	0	1

Number of Towns by Population Size - 2011

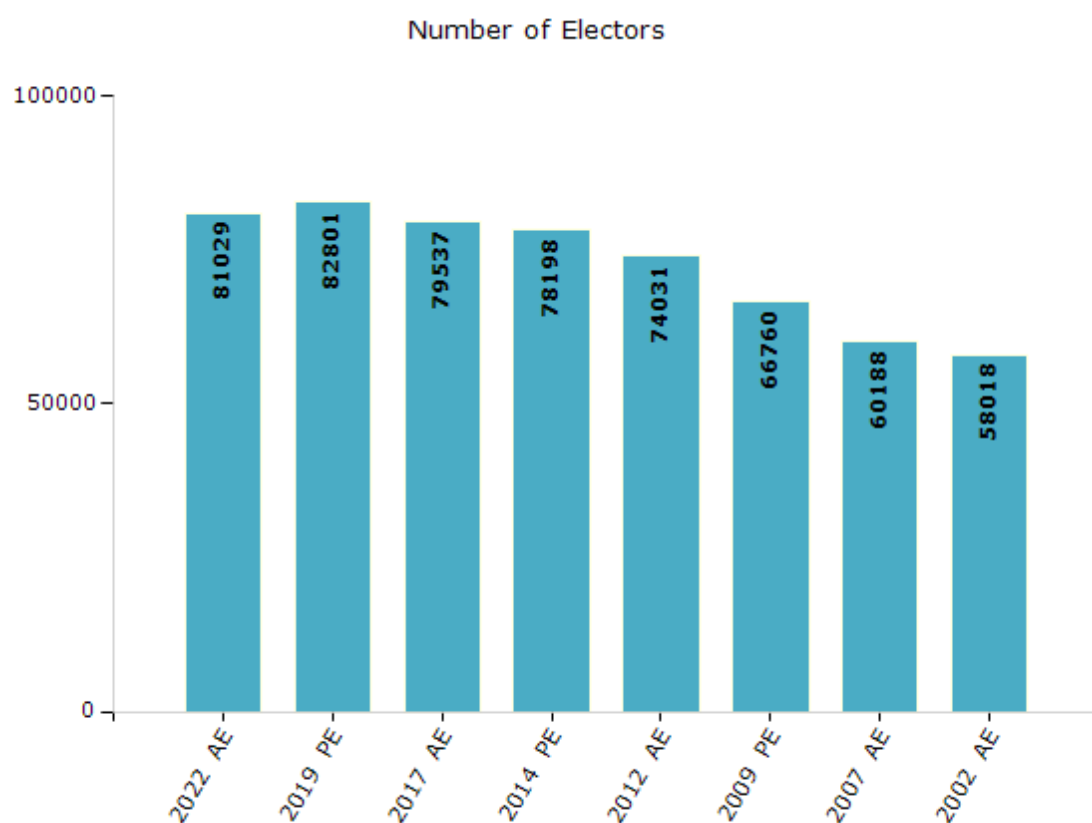


Electoral Features

Electors by Male & Female

Year	Male	Female	Others	Total
2022 AE	42428	38600	1	81029
2019 PE	43951	38849	1	82801
2017 AE	40829	38708	0	79537
2014 PE	40189	38009	0	78198
2012 AE	38063	35968	0	74031

Year	Male	Female	Others	Total
2009 PE	32777	33983	-	66760
2007 AE	29188	31000	-	60188
2004 PE	-	-	-	-
2002 AE	28287	29731	-	58018

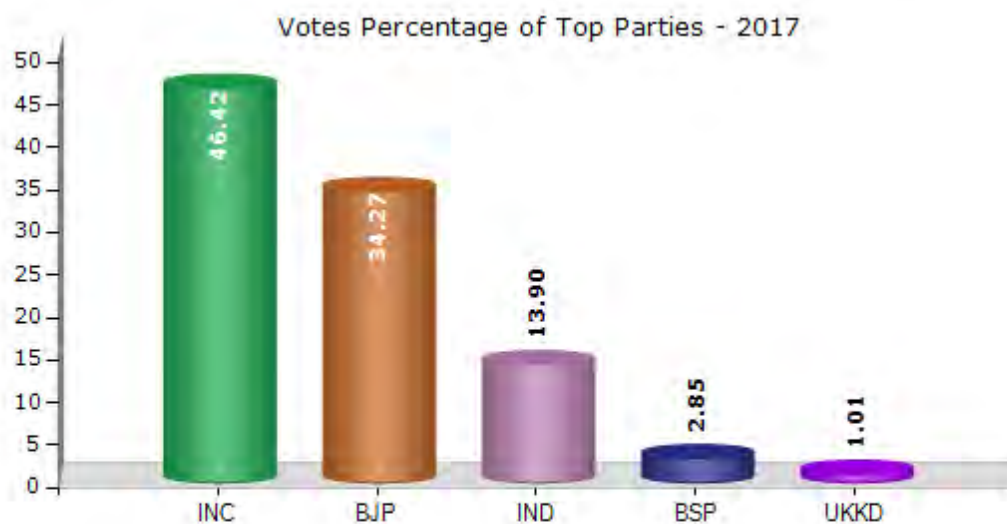


Note : AE : Assembly Election, PE : Assembly Segment of Parliamentary Election

Historical Summary Election Results

Summary Result of Assembly Election - 2017

Candidate Name	Party	Votes	Votes %
Karan Mahara	INC	19035	46.42
Ajay Bhatt	BJP	14054	34.27
Pramod Nainwal	IND	5701	13.9
Kripal Ram	BSP	1169	2.85
Pratap Singh Shahi	UKKD	414	1.01
	NOTA	637	1.55



Polling Station Level Election Results

Number and Name of Polling Stations (PS) (2022)

Number of Polling Stations	Name of Polling Stations	Number of Polling Stations	Name of Polling Stations
1	Govt. Primary School, Bel	22	Govt. Primary School, Dadhuli
2	Janmilan Center, Patiyachaura	23	Govt. Primary School, Seem
3	Govt. Primary School, Bamanchauna	24	Govt. Primary School, Kotagiwai
4	Govt. Primary School, Naula	25	Govt. Primary School, Shrikot
5	Govt. Primary School, Janal	26	Govt. Primary School, Basot
6	Govt Primmary School, Dalmodi	27	Govt. Primary School, Saure
7	Govt. Primary School, Inda	28	Govt. Primary School, Kotjeenapani(Tolkandey) (East Part)
8	Govt. Primary School, Sanana	29	Govt. Primary School, Kotjeenapani(Tolkandey) (West Part)
9	Govt. Primary School, Kamradh	30	Govt. Primary School, Sooni
10	Govt. Primary School, Bajan	31	Govt. Primary School, Laukot
11	Govt. Primary School, Rikhadi Negi	32	Govt. Primary School, Danpau
12	Govt. Primary School, Khanoliya	33	Govt. Inter Collage, Chaunaliya
13	Govt. Primary School, Bouli	34	Govt. Primary School, Mohnari
14	Govt. Inter College, Vinayak Jamoli (East Part)	35	Govt. Primary School, Sirmoli
15	Govt. Inter College, Vinayak Jamoli (West Part)	36	Govt. Primary School, Bhakuniya
16	Govt. Primary School, Bhikiyasain	37	Govt. Primary School, Harnoli
17	Govt. Inter Collage, Bhikiyasain (East Part)	38	Govt. Primary School, Dharad
18	Govt. Inter Collage, Bhikiyasain (West Part)	39	Govt. Primary School, Sinauda
19	Govt. H.S. School, Lisedi	40	Govt. Primary School, Pantgaon
20	Govt. Primary School, Khuredi	41	Govt. Primary School, Rapadh
21	Govt. Primary School, Binoli	42	Govt. Primary School, Dewalikhan

Contd....

Polling Station Level Election Results

Polling Station-wise Votes Secured by Overall Top Five Parties in Ranikhet Assembly in Assembly Election (AE) under Almora Parliamentary Constituency in Uttarakhand (2022)

No. of Polling Station	Winner - Pramod Nainwal (BJP)	Runner-up - Karan Mahara (INC)	3rd - Nandan Singh Bisht (AAP)	4th - Deepak Kargeti (IND)	5th - Manoj Kumar (BSP)	NOTA	Other	Total Votes Secured
36	95	52	3	6	1	2	1	160
37	134	93	2	6	0	7	5	247
38	120	134	3	9	4	3	2	275
39	248	162	6	4	14	9	8	451
40	187	100	8	6	3	2	1	307
41	89	110	4	4	2	3	1	213
42	159	37	6	7	1	1	3	214
43	119	103	6	2	3	3	4	240
44	150	113	2	3	5	1	5	279
45	128	61	5	3	2	0	0	199
46	190	106	3	6	6	4	3	318
47	96	43	1	1	0	1	1	143
48	149	66	1	2	0	3	2	223
49	119	111	0	4	3	4	1	242
50	89	56	0	3	0	3	1	152
51	202	127	4	5	7	3	1	349
52	205	108	1	8	3	5	2	332
53	117	95	1	2	2	2	2	221
54	183	116	1	3	2	2	3	310
55	130	119	1	1	16	1	2	270
56	50	103	3	0	1	2	1	160
57	129	121	1	1	1	4	2	259
58	135	190	17	5	13	6	5	371
59	66	58	0	4	2	3	1	134
60	206	234	8	4	12	10	3	477
61	262	217	9	4	4	6	4	506
62	226	173	2	2	7	6	0	416
63	129	119	8	1	5	1	4	267
64	225	109	2	7	6	5	0	354
65	218	358	5	3	3	7	1	595
66	189	237	0	1	4	7	1	439
67	234	237	6	2	4	8	5	496
68	96	114	0	1	1	1	2	215
69	236	186	7	16	3	8	1	457
70	246	156	0	3	5	7	3	420

Contd....

Polling Station Level Election Results

Winner, Runner-up and 3rd Party Position & Winning Margin According to Polling Stations in Ranikhet Assembly in Assembly Election (AE) under Almora Parliamentary Constituency in Uttarakhand (2022)

Polling Station Number	Winner Party	Winner Votes (%)	Runner-up Party	Runner-up Votes (%)	Winning Margin Votes (%)	Third Party	Third Party Votes (%)	Other Votes (%)
71	BJP	152 (59.61)	INC	83 (32.55)	69 (27.06)	AAP	14 (5.49)	6 (2.35)
72	BJP	77 (52.74)	INC	60 (41.1)	17 (11.64)	SP	2 (1.37)	7 (4.79)
73	BJP	342 (61.29)	INC	192 (34.41)	150 (26.88)	BSP	9 (1.61)	15 (2.69)
74	BJP	223 (55.75)	INC	157 (39.25)	66 (16.5)	BSP	7 (1.75)	13 (3.25)
75	BJP	89 (56.69)	INC	56 (35.67)	33 (21.02)	UKKD	6 (3.82)	6 (3.82)
76	BJP	188 (59.12)	INC	122 (38.36)	66 (20.76)	UKKD	3 (0.94)	5 (1.57)
77	BJP	66 (54.55)	INC	49 (40.5)	17 (14.05)	AAP	2 (1.65)	4 (3.31)
78	INC	130 (48.87)	BJP	120 (45.11)	10 (3.76)	AAP	8 (3.01)	8 (3.01)
79	BJP	50 (50)	INC	43 (43)	7 (7)	IND (DK)	4 (4)	3 (3)
80	BJP	225 (60.48)	INC	134 (36.02)	91 (24.46)	AAP	2 (0.54)	11 (2.96)
81	INC	169 (60.79)	BJP	92 (33.09)	77 (27.7)	BSP	5 (1.8)	12 (4.32)
82	BJP	111 (48.47)	INC	109 (47.6)	2 (0.87)	IND (DK)	3 (1.31)	6 (2.62)
83	INC	169 (48.56)	BJP	163 (46.84)	6 (1.72)	IND (DK)	9 (2.59)	7 (2.01)
84	INC	188 (56.8)	BJP	127 (38.37)	61 (18.43)	AAP	7 (2.11)	9 (2.72)
85	BJP	94 (64.83)	INC	45 (31.03)	49 (33.8)	AAP	1 (0.69)	5 (3.45)
86	BJP	77 (67.54)	INC	27 (23.68)	50 (43.86)	AAP	2 (1.75)	8 (7.02)
87	INC	175 (50.58)	BJP	162 (46.82)	13 (3.76)	AAP	4 (1.16)	5 (1.45)
88	INC	260 (47.19)	BJP	259 (47.01)	1 (0.18)	AAP	13 (2.36)	19 (3.45)
89	BJP	167 (48.83)	INC	166 (48.54)	1 (0.29)	BSP	3 (0.88)	6 (1.75)
90	BJP	177 (50.14)	INC	156 (44.19)	21 (5.95)	UKKD	5 (1.42)	15 (4.25)
91	INC	339 (71.22)	BJP	110 (23.11)	229 (48.11)	AAP	7 (1.47)	20 (4.2)
92	INC	158 (48.62)	BJP	152 (46.77)	6 (1.85)	AAP	4 (1.23)	11 (3.38)
93	BJP	249 (71.35)	INC	86 (24.64)	163 (46.71)	BSP	4 (1.15)	10 (2.87)
94	BJP	244 (53.86)	INC	194 (42.83)	50 (11.03)	IND (DK)	5 (1.1)	10 (2.21)
95	BJP	405 (66.07)	INC	179 (29.2)	226 (36.87)	AAP	9 (1.47)	20 (3.26)
96	INC	150 (81.08)	BJP	28 (15.14)	122 (65.94)	BSP	3 (1.62)	4 (2.16)
97	INC	151 (46.6)	BJP	145 (44.75)	6 (1.85)	AAP	9 (2.78)	19 (5.86)
98	INC	105 (47.51)	BJP	100 (45.25)	5 (2.26)	AAP	6 (2.71)	10 (4.52)
99	INC	145 (62.77)	BJP	63 (27.27)	82 (35.5)	AAP	18 (7.79)	5 (2.16)
100	BJP	163 (50)	INC	148 (45.4)	15 (4.6)	BSP	4 (1.23)	11 (3.37)
101	INC	237 (55.37)	BJP	120 (28.04)	117 (27.33)	AAP	44 (10.28)	27 (6.31)
102	BJP	293 (54.77)	INC	214 (40)	79 (14.77)	AAP	10 (1.87)	18 (3.36)
103	INC	162 (55.1)	BJP	116 (39.46)	46 (15.64)	AAP	6 (2.04)	10 (3.4)
104	BJP	212 (53.27)	INC	143 (35.93)	69 (17.34)	AAP	11 (2.76)	32 (8.04)
105	BJP	129 (59.45)	INC	63 (29.03)	66 (30.42)	AAP	7 (3.23)	18 (8.29)

Contd....

Socio-Economic Amenities - Rural

Access to Education Facilities

Particulars	Number of Villages (% of Population)				
	Available	Not Available	If Not Available (Distance of Nearest Facility)		
			A	B	C
Govt. Primary School	196 (76)	160 (24)	143 (20)	3 (1)	1 (0)
Private Primary School	19 (7)	337 (93)	1 (0)	0 (0)	0 (0)
Govt. Middle School	56 (31)	300 (69)	240 (57)	48 (10)	5 (1)
Private Middle School	5 (2)	351 (98)	5 (1)	0 (0)	0 (0)
Govt. Secondary School	25 (18)	331 (82)	225 (59)	83 (18)	10 (2)
Private Secondary School	0 (0)	356 (100)	10 (2)	3 (0)	0 (0)
Govt. Senior Secondary School	18 (15)	338 (85)	206 (56)	103 (24)	15 (2)
Private Senior Secondary School	0 (0)	356 (100)	10 (2)	4 (0)	0 (0)
Govt. Arts and Science Degree College	0 (0)	356 (100)	10 (10)	38 (14)	308 (76)
Private Arts and Science Degree College	0 (0)	356 (100)	0 (0)	0 (0)	0 (0)
Govt. Engineering College	0 (0)	356 (100)	1 (0)	1 (0)	354 (100)
Private Engineering College	0 (0)	356 (100)	0 (0)	0 (0)	0 (0)
Govt. Medicine College	1 (1)	355 (99)	0 (0)	0 (0)	0 (0)
Private Medicine College	0 (0)	356 (100)	28 (10)	10 (7)	317 (82)
Govt. Management Institute	0 (0)	356 (100)	0 (0)	0 (0)	0 (0)
Private Management Institute	0 (0)	356 (100)	0 (0)	0 (0)	356 (100)
Govt. Polytechnic	1 (3)	355 (97)	14 (5)	32 (7)	309 (85)
Private Polytechnic	0 (0)	356 (100)	0 (0)	0 (0)	0 (0)
Govt. Vocational Training School/ITI	0 (0)	356 (100)	5 (2)	36 (12)	315 (86)
Private Vocational Training School/ITI	0 (0)	356 (100)	0 (0)	0 (0)	0 (0)
Govt. Non Formal Training Centre	22 (10)	334 (90)	107 (21)	22 (3)	205 (66)
Private Non Formal Training Centre	0 (0)	356 (100)	0 (0)	0 (0)	0 (0)
Govt. School For Disabled	0 (0)	356 (100)	0 (0)	0 (0)	0 (0)
Private School For Disabled	0 (0)	356 (100)	0 (0)	0 (0)	356 (100)
Government Others	0 (0)	356 (100)	10 (10)	38 (14)	308 (76)
Private Others	0 (0)	356 (100)	0 (0)	0 (0)	0 (0)

Note : Distance A : Less than 5 km; B : Between 5-10 km; C : 10+ km.; Source : Data Analysis is based on 2011 Census.

DISCLAIMER

The Terms of Use and Disclaimer of Datanet India Private Limited (hereinafter referred to as "Datanet") for use of this analysis report of **Ranikhet Assembly Constituency (Ranikhet Vidhan Sabha)** :-

1. **Assembly Factbook™** is a Registered Trade Mark owned by Datanet.
2. All the maps are sketched and graphical representation only and have not been drawn to the scale and also not to represent the actual geographical area or boundary of the unit.
3. The data for the aforesaid analysis is based on authentic sources and has been culled from the various publications of Census, CSO and NSSO for district and block level data, various central and state government departments, Central & State Elections Commissions and the concerned Returning Officers' releases, Electoral Rolls, Election results and allied publications, internal assessment, surveys, estimates and analysis. Therefore, certain adjustment of data at micro level may have been done to arrive closer to the macro data.
4. Data have been provided on an "As Is" and "As AVAILABLE" basis
5. The colours shown in the maps or diagram and charts of a particular party, alliance or AC are indicative and do not represent them.
6. This publication which includes maps, sheets, graphs and data would be the property under copyright of Datanet only. The user may use these for its internal study, analysis and research purposes. It's public display, re-selling or any commercial uses by the user are not allowed.
7. Datanet has taken due care and caution in compilation and processing of data and allied information, but does not guarantee the accuracy, adequacy or completeness of any information/analysis and will be not responsible for any errors or omissions or for the results obtained from the use of such information/analysis.
8. All the contents for the publication have been culled from various authentic sources and Datanet reasonably believes such sources to be reliable, but does not make any representations, express or implied as to the accuracy or fitness of use of such information. The information or contents of the information/analysis do not constitute advice and should not be relied upon in making (or refraining from making) any decision. Any reliance placed upon the information provided by Datanet is the sole responsibility and strictly at the user's risk.
9. In no event will Datanet be liable for any damages (including, without limitation, damages for loss of business projects, or loss of profits) arising in contract, tort or otherwise from the use of or inability to use any of its contents, or from any action taken (or refrained from being taken) as a result of using the analysis or any of its contents. Datanet its directors, owners, editors, officials, employees, distributor and agents or any associate will not be liable for any errors in the information contained or any consequences arising from the use of the contents of the provided information/analysis.
10. If any provision of these terms and conditions is held invalid or illegal or unenforceable for any reason by any court of competent jurisdiction, such provision shall be severed and the remainder of provisions of the terms and conditions shall continue in full force and effect as if the Term of Use had been executed with the invalid, illegal or unenforceable provision eliminated.
11. If there are any discrepancies in the information provided, please bring it to attention of Datanet for suitable rectification measures.

**Buy Online This Complete Book At
Datanet India eBooks Store**

www.indiastatpublications.com

or go directly at

**[http://www.indiastatpublications.com/
Assembly_factbook/Uttarakhand/Almora/ Ranikhet](http://www.indiastatpublications.com/Assembly_factbook/Uttarakhand/Almora/Ranikhet)**

 **india**stat**elections**

ISBN : 978-93-5822-606-5



9 789358 226065