



Uttarakhand

# Assembly Factbook™

Karnprayag Assembly Constituency



Key Electoral Data of Karnprayag  
Assembly Constituency (Vidhan Sabha)

Uttarakhand

# **Assembly Factbook™**

Karnprayag Assembly Constituency



Karnprayag Vidhan Sabha

**Editor & Director**

Dr. R.K. Thukral

**Research Editor**

Dr. Shafeeq Rahman

**Compiled, Researched and Published by  
Datanet India Pvt. Ltd.**

D-100, 1st Floor,

Okhla Industrial Area, Phase-I,

New Delhi- 110020.

Ph.: 91-11- 43580781-84

Email : support@indiastatpublications.com

Website : www.indiastatelections.com

**Online Book Store :**

www.indiastatpublications.com

**Report No. :** AFB/UK-006-0125

**ISBN :** 978-93-5822-515-0

**First Edition :** January, 2018

**Eighth Updated Edition :** January, 2025

**Price :** Rs.11500/-

US\$ 310

**© Datanet India Pvt. Ltd.**

All rights reserved. No part of this book may be reproduced, stored in a retrieval system or transmitted in any form or by any means, mechanical photocopying, photographing, scanning, recording or otherwise without the prior written permission of the publisher. Please refer to Disclaimer at page no. 186 for the use of this publication.

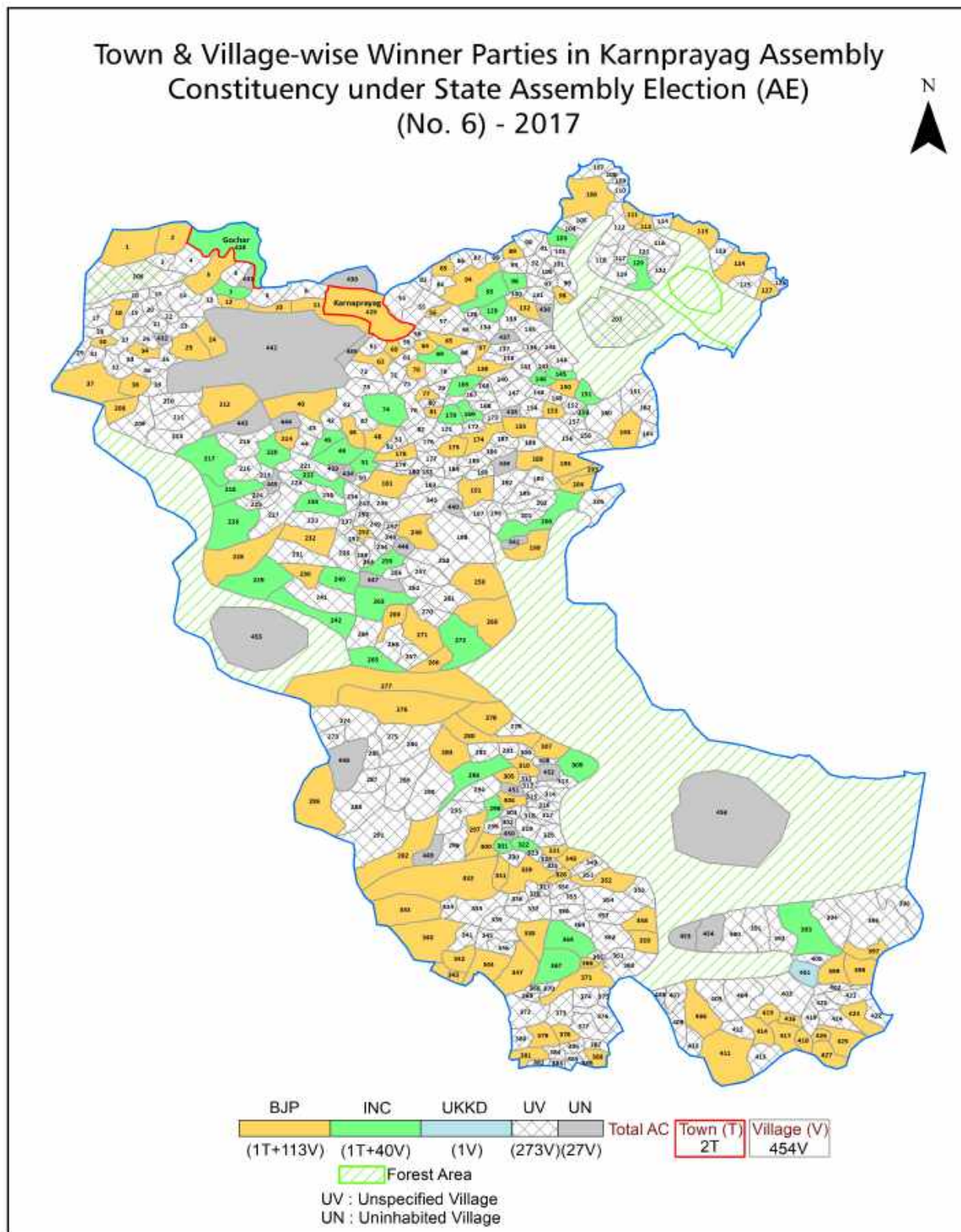
Printed in India

## Contents

No.	Particulars	Page No.
	<b>Introduction</b>	
1	Assembly Constituency - (Vidhan Sabha) at a Glance   Features of Assembly as per Delimitation Commission of India (2008)	1-2
	<b>Location and Political Maps</b>	
2	Location Map   Boundaries of Assembly Constituency - (Vidhan Sabha) in District   Boundaries of Assembly Constituency under Parliamentary Constituency - (Lok Sabha)   Town & Village-wise Winner Parties- 2024, 2022, 2019, 2017, 2014, 2012 and 2009	3-11
	<b>Administrative Setup (2011)</b>	
3	District   Sub-district   Towns   Villages   Inhabited Villages   Uninhabited Villages   Village Panchayat   Intermediate Panchayat	12-33
	<b>Demographics (2011)</b>	
4	Population   Households   Rural/Urban Population   Towns and Villages by Population Size   Sex Ratio (Total & 0-6 Years)   Religious Population   Social Population   Literacy Rate	34-35
	<b>Electoral Features</b>	
5	Important Dates of Last Elections Held   Electors by Gender   Service Electors   Voters   Voters Turnout   Polling Stations & Average Number of Electors per Polling Station   Electors by Age Group   Present Elected Representatives	36-41
	<b>Historical Summary Election Results</b>	
6	Vote Share of Major Parties   Winning Margin (Number & Percentage)   Polarity of Parties   Summary Result of Assembly Segment of Parliamentary Election 2024, 2019, 2014, 2009, 2004 and 1999   Summary Result of Assembly Elections 2022, 2017, 2012, 2007 and 2002	42-54
	<b>Polling Station Level Election Results</b>	
7	Name and Number of Polling Station 2024, 2022, 2019, 2017, 2014, 2012 and 2009   Polling Station-wise Electors, Voters & Voters Turnout 2024, 2022, 2019, 2017, 2014, 2012 and 2009   Polling Station wise Elections Results 2024, 2022, 2019, 2017, 2014, 2012 and 2009	55-156
8	<b>Panchayat and Local Bodies Election Results</b> Panchayat Result 2014   Urban Local Bodies Result 2013	157-166
	<b>Share of Assembly Constituency</b>	
9	Share of Assembly Constituency - (Vidhan Sabha) in State, District and Parliamentary Constituency - (Lok Sabha)	167
	<b>Socio-Economic Amenities (2011)</b>	
10	Access to Administrative Units   Agricultural, Manufacturing and Industrial Commodities   Demographic Indicators   Education   Health & Manpower   Drinking Water Supply   Sanitation   Entertainment and Recreations Infrastructure   Power   Food Allocation Distribution and Marketing of Agriculture Commodities Infrastructure   Transport and Road Infrastructure   Communication   Banking and Financial Services   Land Use   Irrigation Source	168-183
11	<b>Abbreviation &amp; Sources</b>	184-185
12	<b>Disclaimer</b>	186



## Location & Political Map



## Administrative Setup

### List of Village Panchayat & Intermediate Panchayat (Block) Name - 2011

Village Name	Village Panchayat Name	Intermediate Panchayat Name
Aali Majyari	Ali Majyari	Gairsain
Agar Laga Gawali	Agar Laga Gawali	Gairsain
Agar Laga Jinagor	Agar	Gairsain
Agontha	Duwa	Karnaprayag
Aind	Aind	Karnaprayag
Airoli	Airoli	Gairsain
Airwadi	Airwadi	Karnaprayag
Akshawara	Lakheri	Gairsain
Ali Chak Dimmar	Dimmar	Karnaprayag
Andrapa	Andrapa	Gairsain
Bacchuwa Ban Malla	Bacchuwa Ban Malla	Gairsain
Bacchuwa Ban Talla	Bacchuwa Ban Talla	Gairsain
Badiya Sem	Silanga	Gairsain
Bagoli	Bagoli	Karnaprayag
Bainital	Ghandiyal	Karnaprayag
Bainoli	Bainoli	Karnaprayag
Bajyani	Bajyani	Gairsain
Bameli	Sunak	Karnaprayag
Banaula	Nauna	Gairsain
Bangaon Malla	Bangaon Malla	Karnaprayag
Bangaon Talla	Bangaon Talla	Karnaprayag
Bangri	Kola Dungari	Karnaprayag
Baniyas	Dharkot	Karnaprayag
Banjyani	Jaul Chaura Malla	Gairsain
Bansoli	Bansoli	Karnaprayag
Bansoli Palli	Bansoli	Karnaprayag
Bansoli Walli	Bansoli	Karnaprayag
Bantoli	Bantoli	Karnaprayag
Baratoli	Baratoli	Karnaprayag

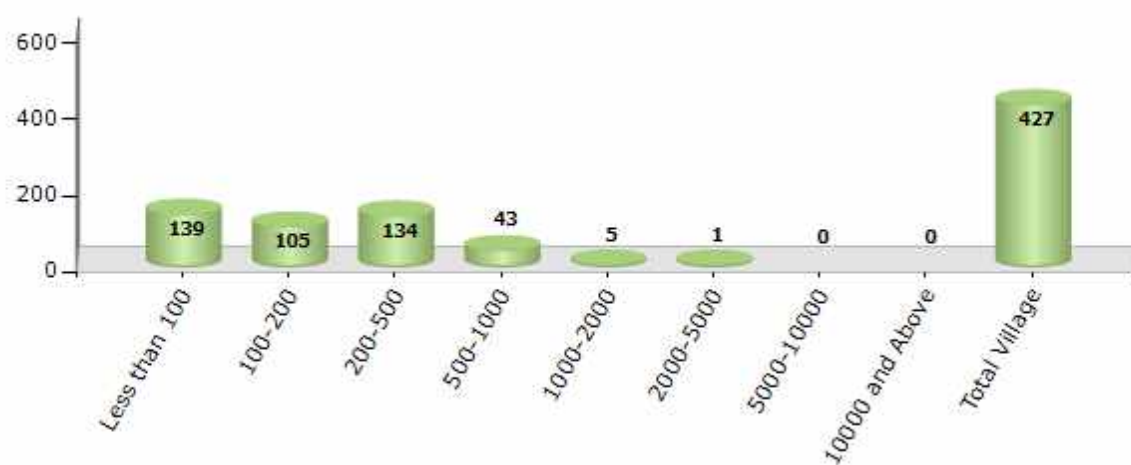
Contd....

## Demographics

### Number of Villages by Population Size - 2011

Less than 100	100-200	200-500	500-1000	1000-2000	2000-5000	5000-10000	10000 and Above	Total Village
139	105	134	43	5	1	0	0	427

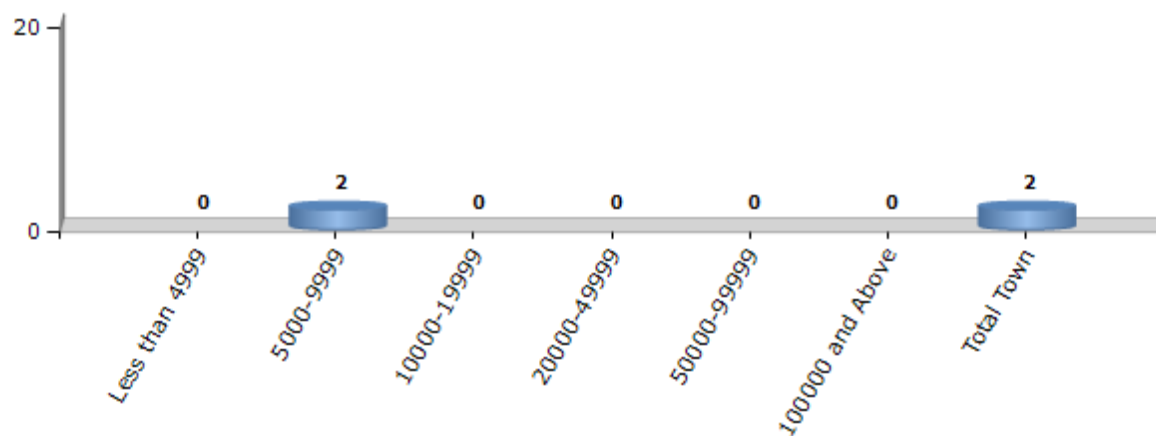
Number of Villages by Population Size - 2011



### Number of Towns by Population Size - 2011

Less than 4999	5000-9999	10000-19999	20000-49999	50000-99999	100000 and Above	Total Town
0	2	0	0	0	0	2

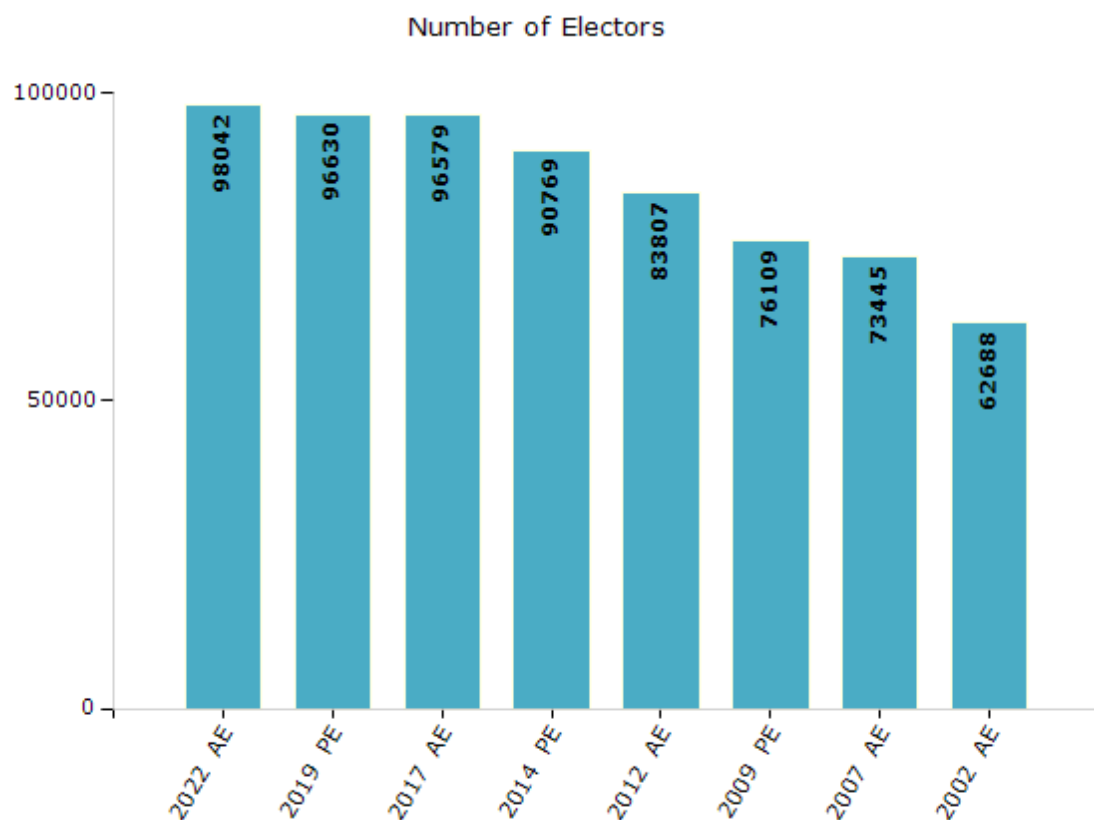
Number of Towns by Population Size - 2011



## Electoral Features

### Electors by Male & Female

Year	Male	Female	Others	Total	Year	Male	Female	Others	Total
2022 AE	51114	46928	0	98042	2009 PE	36866	39243	-	76109
2019 PE	50464	46166	0	96630	2007 AE	36164	37281	-	73445
2017 AE	49583	46996	0	96579	2004 PE	-	-	-	-
2014 PE	46831	43938	0	90769	2002 AE	29702	32986	-	62688
2012 AE	43058	40749	0	83807					



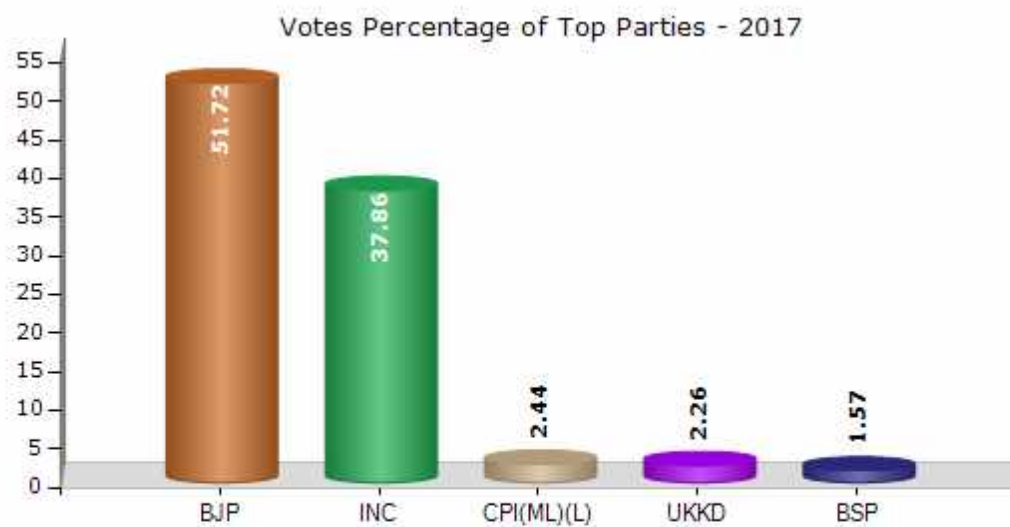
Note : AE : Assembly Election, PE : Assembly Segment of Parliamentary Election



## Historical Summary Election Results

### Summary Result of Assembly Election - 2017

Candidate Name	Party	Votes	Votes %
Surendra Singh Negi	BJP	28159	51.72
Dr. Ansuya Parsad Maikhuri	INC	20610	37.86
Indresh Maikhuri	CPI(ML)(L)	1331	2.44
Balwant Singh Negi	UKKD	1232	2.26
Jyoti Kanwasi	BSP	857	1.57
Bhagat Singh Negi	IND	673	1.24
Mohan Singh Negi	IND	300	0.55
Padam Singh	IND	281	0.52
Anandmani Dutt Joshi Jhalmama	IND	189	0.35
	NOTA	810	1.49



## Polling Station Level Election Results

### Number and Name of Polling Stations (PS) (2022)

Number of Polling Stations	Name of Polling Stations	Number of Polling Stations	Name of Polling Stations
1	Government Primary School Building Deval	22	Government Primary School Building Aind
2	Government Primary School Building Bartoli	23	P.W.D.Office Building Karnprayag(Room no-14)
3	Government Primary School Building Majkhola	24	Nagar Panchayat OfficeBuilding Karanprayag
4	Government Primary School Building Gwar (Pokhari)	25	Government Primary School Building Gandhinagar Karnprayag
5	Government Primary School Building Dhanpur	26	Government Inter CollegeBuilding Karanprayag(Room no-1)
6	Government High School Building Duwa	27	Government Inter CollegeBuilding Karanprayag(Room no-2)
7	Government Inter CollegeBuilding Gauchar(Room No-1)	28	Government Primary School(Second) Building Karnprayag
8	Government Inter CollegeBuilding Gauchar(Room No-2)	29	Government Junior HighSchool Building Dimmar
9	Government Inter CollegeBuilding Gauchar(Room No-3)	30	Government Primary School Building Nakot
10	Government Inter CollegeBuilding Gauchar(Room No-4)	31	Government Primary School Building Simli
11	Government PolytechnicBuilding Gauchar	32	Government Primary School Building Dhardungri
12	Government Primary School Building Panai	33	Government Primary School Building Sundar Gaon
13	Government Primary School Building Kameda-2	34	Government Inter College Building Jakh
14	Government Primary School Building Jhirkoti	35	Government Primary School Building Diyarkot
15	Government Primary School Building Siran	36	Government Uppar PrimarySchool Building Senu
16	Government Girls Junior HighSchool Building Baunla	37	Government Junior HighSchool Building Pudiyani
17	Government Primary School Building Chauki	38	Government Primary School Building Bhatoli
18	Government Primary School Building Gainthi	39	Government Primary School Building Nauti
19	Government Primary School Building Sakand	40	Government Primary School Building Kanoth
20	Government Primary School Building Chaundli	41	Government Primary School Building Naini
21	Government Primary School Building Irabadhani	42	Government Primary School Building Bainoli

Contd....

## Polling Station Level Election Results

### Polling Station-wise Votes Secured by Overall Top Five Parties in Karnprayag Assembly in Assembly Election (AE) under Garhwal Parliamentary Constituency in Uttarakhand (2022)

No. of Polling Station	Winner - Anil Nautiyal (BJP)	Runner-up - Mukesh Negi (INC)	3rd - Teeka Prasad Maikhuri (IND)	4th - Balwant Singh Negi (IND)	5th - Madan Mohan Singh Bhandari (IND)	NOTA	Other	Total Votes Secured
36	115	129	4	1	0	1	11	261
37	166	185	9	0	5	4	17	386
38	102	81	41	0	1	0	9	234
39	250	230	24	2	1	14	10	531
40	133	130	5	1	0	7	15	291
41	116	104	12	0	0	2	15	249
42	194	188	14	0	8	10	15	429
43	114	130	13	0	4	3	20	284
44	141	211	7	4	7	9	30	409
45	115	121	5	0	5	0	15	261
46	28	3	5	0	0	0	2	38
47	88	86	11	1	1	4	3	194
48	124	152	4	1	2	3	2	288
49	83	96	12	2	5	5	6	209
50	227	112	6	1	5	5	5	361
51	104	89	9	1	3	7	6	219
52	33	39	8	0	0	1	0	81
53	81	95	17	0	3	2	12	210
54	124	182	16	0	3	1	5	331
55	29	31	5	0	0	2	43	110
56	94	62	5	0	0	5	1	167
57	168	125	2	1	3	3	14	316
58	201	135	14	0	6	5	13	374
59	100	63	0	0	0	2	4	169
60	181	220	7	5	3	8	11	435
61	79	50	8	1	0	3	2	143
62	193	279	5	2	1	5	40	525
63	115	56	7	0	1	3	3	185
64	103	211	4	1	2	2	9	332
65	177	204	224	6	2	8	13	634
66	42	13	45	0	0	0	16	116
67	186	132	4	0	5	7	86	420
68	136	56	18	1	2	3	6	222
69	102	138	7	2	1	3	7	260
70	285	110	17	0	5	17	11	445

Contd....

## Polling Station Level Election Results

**Winner, Runner-up and 3rd Party Position & Winning Margin According to Polling Stations in Karnprayag Assembly in Assembly Election (AE) under Garhwal Parliamentary Constituency in Uttarakhand (2022)**

Polling Station Number	Winner Party	Winner Votes (%)	Runner-up Party	Runner-up Votes (%)	Winning Margin Votes (%)	Third Party	Third Party Votes (%)	Other Votes (%)
71	BJP	35 (57.38)	INC	11 (18.03)	24 (39.35)	IND (TPM)	5 (8.2)	10 (16.39)
72	BJP	305 (50.5)	INC	263 (43.54)	42 (6.96)	IND (TPM)	15 (2.48)	21 (3.48)
73	BJP	125 (63.13)	INC	49 (24.75)	76 (38.38)	AAP	11 (5.56)	13 (6.57)
74	BJP	124 (40)	INC	88 (28.39)	36 (11.61)	IND (TPM)	62 (20)	36 (11.61)
75	BJP	276 (59.48)	INC	137 (29.53)	139 (29.95)	IND (TPM)	29 (6.25)	22 (4.74)
76	BJP	134 (37.12)	CPI(ML)(L)	100 (27.7)	34 (9.42)	INC	58 (16.07)	69 (19.11)
77	INC	308 (55.1)	BJP	202 (36.14)	106 (18.96)	CPI(ML)(L)	14 (2.5)	35 (6.26)
78	BJP	80 (64)	INC	40 (32)	40 (32)	IND (TPM)	2 (1.6)	3 (2.4)
79	BJP	110 (49.77)	INC	84 (38.01)	26 (11.76)	IND (TPM)	10 (4.52)	17 (7.69)
80	INC	152 (54.09)	BJP	108 (38.43)	44 (15.66)	IND (TPM)	9 (3.2)	12 (4.27)
81	BJP	88 (48.09)	INC	83 (45.36)	5 (2.73)	AAP	3 (1.64)	9 (4.92)
82	INC	249 (57.37)	BJP	148 (34.1)	101 (23.27)	IND (TPM)	15 (3.46)	22 (5.07)
83	BJP	77 (52.03)	INC	59 (39.86)	18 (12.17)	IND (MMSB)	4 (2.7)	8 (5.41)
84	BJP	46 (52.27)	INC	21 (23.86)	25 (28.41)	UKKD	16 (18.18)	5 (5.68)
85	INC	115 (59.28)	BJP	56 (28.87)	59 (30.41)	IND (MMSB)	6 (3.09)	17 (8.76)
86	BJP	131 (53.91)	INC	92 (37.86)	39 (16.05)	UKKD	9 (3.7)	11 (4.53)
87	BJP	254 (60.91)	INC	138 (33.09)	116 (27.82)	IND (TPM)	8 (1.92)	17 (4.08)
88	INC	195 (62.3)	BJP	99 (31.63)	96 (30.67)	NDS	5 (1.6)	14 (4.47)
89	BJP	283 (51.27)	INC	231 (41.85)	52 (9.42)	IND (TPM)	7 (1.27)	31 (5.62)
90	INC	136 (52.51)	BJP	105 (40.54)	31 (11.97)	CPI(ML)(L)	5 (1.93)	13 (5.02)
91	INC	77 (53.47)	BJP	44 (30.56)	33 (22.91)	IND (TPM)	13 (9.03)	10 (6.94)
92	INC	291 (52.91)	BJP	225 (40.91)	66 (12)	IND (TPM)	9 (1.64)	25 (4.55)
93	BJP	223 (51.98)	INC	164 (38.23)	59 (13.75)	IND (TPM)	18 (4.2)	24 (5.59)
94	INC	236 (45.91)	BJP	231 (44.94)	5 (0.97)	IND (TPM)	15 (2.92)	32 (6.23)
95	INC	221 (49)	BJP	157 (34.81)	64 (14.19)	IND (TPM)	53 (11.75)	20 (4.43)
96	INC	293 (53.18)	BJP	185 (33.58)	108 (19.6)	IND (TPM)	33 (5.99)	40 (7.26)
97	BJP	174 (47.15)	INC	120 (32.52)	54 (14.63)	IND (TPM)	52 (14.09)	23 (6.23)
98	BJP	94 (40.52)	INC	91 (39.22)	3 (1.3)	IND (TPM)	18 (7.76)	29 (12.5)
99	INC	147 (59.76)	BJP	60 (24.39)	87 (35.37)	IND (TPM)	27 (10.98)	12 (4.88)
100	INC	83 (49.4)	BJP	66 (39.29)	17 (10.11)	IND (MMSB)	6 (3.57)	13 (7.74)
101	INC	236 (54.25)	BJP	161 (37.01)	75 (17.24)	IND (TPM)	13 (2.99)	25 (5.75)
102	INC	160 (54.05)	BJP	117 (39.53)	43 (14.52)	IND (TPM)	5 (1.69)	14 (4.73)
103	BJP	87 (46.28)	INC	82 (43.62)	5 (2.66)	IND (TPM)	12 (6.38)	7 (3.72)
104	INC	181 (46.17)	BJP	106 (27.04)	75 (19.13)	NDS	66 (16.84)	39 (9.95)
105	BJP	184 (53.49)	INC	109 (31.69)	75 (21.8)	IND (TPM)	27 (7.85)	24 (6.98)

Contd....

## Socio-Economic Amenities - Rural

### Access to Education Facilities

Particulars	Number of Villages (% of Population)				
	Available	Not Available	If Not Available (Distance of Nearest Facility)		
			A	B	C
Govt. Primary School	301 (90)	126 (10)	113 (9)	7 (1)	1 (0)
Private Primary School	36 (15)	391 (85)	1 (0)	0 (0)	0 (0)
Govt. Middle School	90 (41)	337 (59)	282 (48)	50 (10)	3 (1)
Private Middle School	14 (10)	413 (90)	1 (0)	0 (0)	0 (0)
Govt. Secondary School	44 (21)	383 (79)	246 (48)	115 (24)	22 (7)
Private Secondary School	1 (3)	426 (97)	0 (0)	0 (0)	0 (0)
Govt. Senior Secondary School	26 (14)	401 (86)	214 (41)	146 (33)	37 (11)
Private Senior Secondary School	4 (1)	423 (99)	0 (0)	0 (0)	0 (0)
Govt. Arts and Science Degree College	1 (3)	426 (97)	17 (3)	50 (10)	359 (84)
Private Arts and Science Degree College	0 (0)	427 (100)	0 (0)	0 (0)	0 (0)
Govt. Engineering College	0 (0)	427 (100)	0 (0)	0 (0)	427 (100)
Private Engineering College	0 (0)	427 (100)	0 (0)	0 (0)	0 (0)
Govt. Medicine College	0 (0)	427 (100)	0 (0)	0 (0)	427 (100)
Private Medicine College	0 (0)	427 (100)	0 (0)	0 (0)	0 (0)
Govt. Management Institute	0 (0)	427 (100)	0 (0)	0 (0)	207 (38)
Private Management Institute	0 (0)	427 (100)	0 (0)	0 (0)	220 (62)
Govt. Polytechnic	0 (0)	427 (100)	8 (2)	16 (2)	403 (96)
Private Polytechnic	0 (0)	427 (100)	0 (0)	0 (0)	0 (0)
Govt. Vocational Training School/ITI	1 (3)	426 (97)	32 (8)	86 (18)	308 (71)
Private Vocational Training School/ITI	0 (0)	427 (100)	0 (0)	0 (0)	0 (0)
Govt. Non Formal Training Centre	0 (0)	427 (100)	11 (2)	42 (9)	374 (89)
Private Non Formal Training Centre	0 (0)	427 (100)	0 (0)	0 (0)	0 (0)
Govt. School For Disabled	0 (0)	427 (100)	0 (0)	0 (0)	427 (100)
Private School For Disabled	0 (0)	427 (100)	0 (0)	0 (0)	0 (0)
Government Others	0 (0)	427 (100)	0 (0)	0 (0)	209 (38)
Private Others	0 (0)	427 (100)	0 (0)	0 (0)	218 (62)

Note : Distance A : Less than 5 km; B : Between 5-10 km; C : 10+ km.; Source : Data Analysis is based on 2011 Census.

## DISCLAIMER

The Terms of Use and Disclaimer of Datanet India Private Limited (hereinafter referred to as "Datanet") for use of this analysis report of **Karnprayag Assembly Constituency (Karnprayag Vidhan Sabha)** :-

1. **Assembly Factbook™** is a Registered Trade Mark owned by Datanet.
2. All the maps are sketched and graphical representation only and have not been drawn to the scale and also not to represent the actual geographical area or boundary of the unit.
3. The data for the aforesaid analysis is based on authentic sources and has been culled from the various publications of Census, CSO and NSSO for district and block level data, various central and state government departments, Central & State Elections Commissions and the concerned Returning Officers' releases, Electoral Rolls, Election results and allied publications, internal assessment, surveys, estimates and analysis. Therefore, certain adjustment of data at micro level may have been done to arrive closer to the macro data.
4. Data have been provided on an "As Is" and "As AVAILABLE" basis
5. The colours shown in the maps or diagram and charts of a particular party, alliance or AC are indicative and do not represent them.
6. This publication which includes maps, sheets, graphs and data would be the property under copyright of Datanet only. The user may use these for its internal study, analysis and research purposes. It's public display, re-selling or any commercial uses by the user are not allowed.
7. Datanet has taken due care and caution in compilation and processing of data and allied information, but does not guarantee the accuracy, adequacy or completeness of any information/analysis and will be not responsible for any errors or omissions or for the results obtained from the use of such information/analysis.
8. All the contents for the publication have been culled from various authentic sources and Datanet reasonably believes such sources to be reliable, but does not make any representations, express or implied as to the accuracy or fitness of use of such information. The information or contents of the information/analysis do not constitute advice and should not be relied upon in making (or refraining from making) any decision. Any reliance placed upon the information provided by Datanet is the sole responsibility and strictly at the user's risk.
9. In no event will Datanet be liable for any damages (including, without limitation, damages for loss of business projects, or loss of profits) arising in contract, tort or otherwise from the use of or inability to use any of its contents, or from any action taken (or refrained from being taken) as a result of using the analysis or any of its contents. Datanet its directors, owners, editors, officials, employees, distributor and agents or any associate will not be liable for any errors in the information contained or any consequences arising from the use of the contents of the provided information/analysis.
10. If any provision of these terms and conditions is held invalid or illegal or unenforceable for any reason by any court of competent jurisdiction, such provision shall be severed and the remainder of provisions of the terms and conditions shall continue in full force and effect as if the Term of Use had been executed with the invalid, illegal or unenforceable provision eliminated.
11. If there are any discrepancies in the information provided, please bring it to attention of Datanet for suitable rectification measures.



**Buy Online This Complete Book At  
Datanet India eBooks Store**

**[www.indiastatpublications.com](http://www.indiastatpublications.com)**

**or go directly at**

**[http://www.indiastatpublications.com/  
Assembly\\_factbook/Uttarakhand/Garhwal/ Karnprayag](http://www.indiastatpublications.com/Assembly_factbook/Uttarakhand/Garhwal/Karnprayag)**

 **indiastat**elections

ISBN : 978-93-5822-515-0



9 789358 225150