



Uttarakhand

Assembly Factbook™

Rudraprayag Assembly Constituency



Key Electoral Data of Rudraprayag
Assembly Constituency (Vidhan Sabha)

Uttarakhand
Assembly FactbookTM
Rudraprayag Assembly Constituency



Rudraprayag Vidhan Sabha

Editor & Director

Dr. R.K. Thukral

Research Editor

Dr. Shafeeq Rahman

**Compiled, Researched and Published by
Datanet India Pvt. Ltd.**

D-100, 1st Floor,

Okhla Industrial Area, Phase-I,

New Delhi- 110020.

Ph.: 91-11- 43580781-84

Email : support@indiastatpublications.com

Website : www.indiastatelections.com

Online Book Store :

www.indiastatpublications.com

Report No. : AFB/UK-008-0123

ISBN : 978-93-5822-512-9

First Edition : January, 2018

Sixth Updated Edition : January, 2023

Price : Rs.11500/-

US\$ 310

© Datanet India Pvt. Ltd.

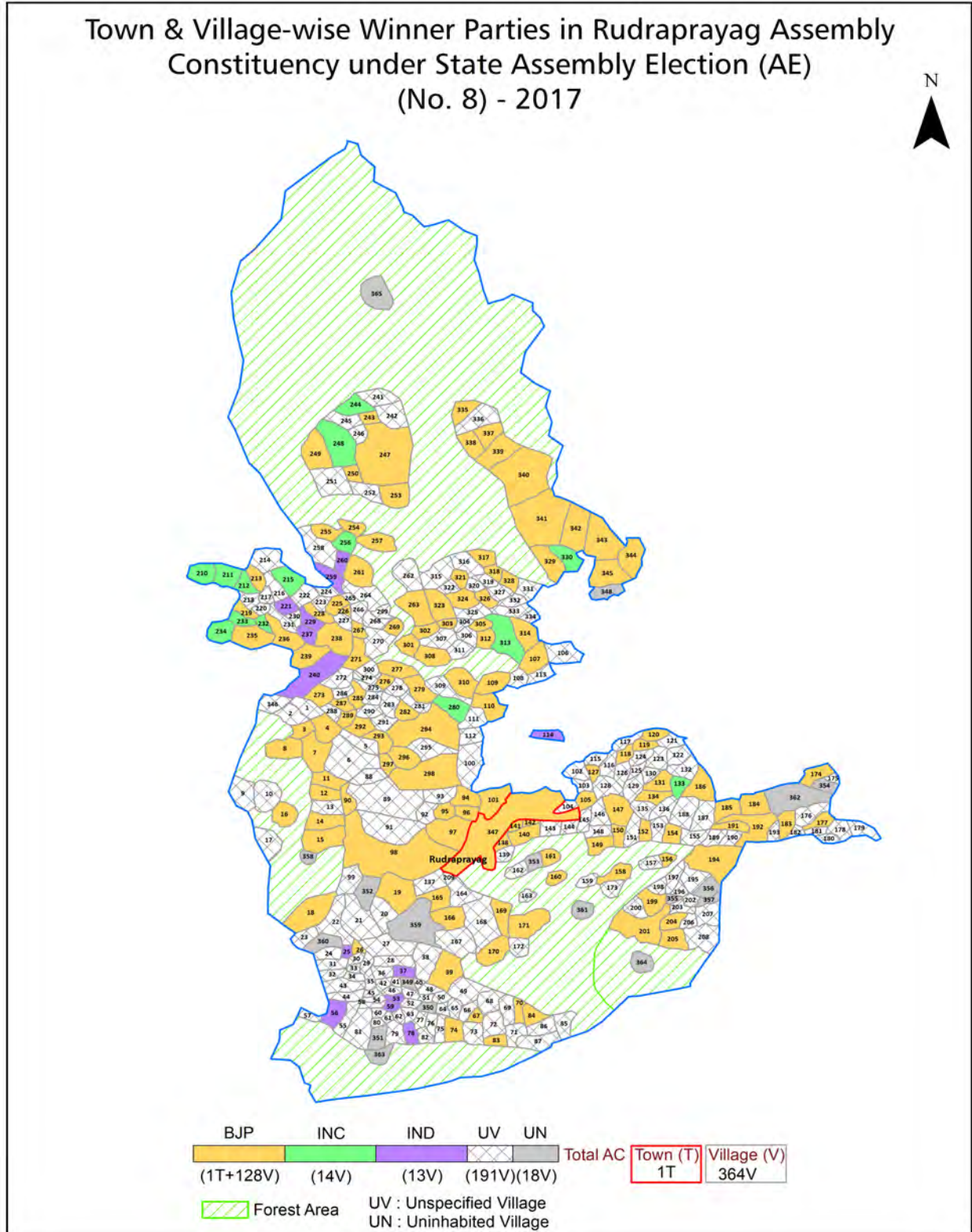
All rights reserved. No part of this book may be reproduced, stored in a retrieval system or transmitted in any form or by any means, mechanical photocopying, photographing, scanning, recording or otherwise without the prior written permission of the publisher. Please refer to Disclaimer at page no. 187 for the use of this publication.

Printed in India

Contents

No.	Particulars	Page No.
	Introduction	
1	Assembly Constituency - (Vidhan Sabha) at a Glance Features of Assembly as per Delimitation Commission of India (2008)	1-2
	Location and Political Maps	
2	Location Map Boundaries of Assembly Constituency - (Vidhan Sabha) in District Boundaries of Assembly Constituency under Parliamentary Constituency - (Lok Sabha) Town & Village-wise Winner Parties- 2022, 2019, 2017, 2014, 2012 and 2009	3-11
	Administrative Setup (2011)	
3	District Sub-district Towns Villages Inhabited Villages Uninhabited Villages Village Panchayat Intermediate Panchayat	12-29
	Demographics (2011)	
4	Population Households Rural/Urban Population Towns and Villages by Population Size Sex Ratio (Total & 0-6 Years) Religious Population Social Population Literacy Rate	30-31
	Electoral Features	
5	Important Dates of Last Elections Held Electors by Gender Service Electors Voters Voters Turnout Polling Stations & Average Number of Electors per Polling Station Electors by Age Group Present Elected Representatives	32-37
	Historical Summary Election Results	
6	Vote Share of Major Parties Winning Margin (Number & Percentage) Polarity of Parties Summary Result of Assembly Segment of Parliamentary Election 2019, 2014, 2009, 2004 and 1999 Summary Result of Assembly Elections 2022, 2017, 2012, 2007 and 2002	38-50
	Polling Station Level Election Results	
7	Name and Number of Polling Station 2022, 2019, 2017, 2014, 2012 and 2009 Polling Station-wise Electors, Voters & Voters Turnout 2022, 2019, 2017, 2014, 2012 and 2009 Polling Station wise Elections Results 2022, 2019, 2017, 2014, 2012 and 2009	51-159
	Panchayat and Local Bodies Election Results	
8	Panchayat Result 2014 Urban Local Bodies Result 2013	160-167
	Share of Assembly Constituency	
9	Share of Assembly Constituency - (Vidhan Sabha) in State, District and Parliamentary Constituency - (Lok Sabha)	168
	Socio-Economic Amenities (2011)	
10	Access to Administrative Units Agricultural, Manufacturing and Industrial Commodities Demographic Indicators Education Health & Manpower Drinking Water Supply Sanitation Entertainment and Recreations Infrastructure Power Food Allocation Distribution and Marketing of Agriculture Commodities Infrastructure Transport and Road Infrastructure Communication Banking and Financial Services Land Use Irrigation Source	169-184
11	Abbreviation & Sources	185-186
12	Disclaimer	187

Location & Political Map



Administrative Setup

List of Village Panchayat & Intermediate Panchayat (Block) Name - 2011

Village Name	Village Panchayat Name	Intermediate Panchayat Name
Aak Sera	Bairagana	Augustmuni
Afrai Khet	Syuni	Augustmuni
Amdala	Kameda	Augustmuni
Arkhund	Arkhund	Jakholi
Atholi	Nag	Jakholi
Bachwar	Bachwar	Jakholi
Badhani	Badhani	Jakholi
Badion	Chauthala	Augustmuni
Bag Seer	Bag Seer	Jakholi
Bagjiwala	Rahar	Jakholi
Bagoli Malli	Bagoli Malli	Augustmuni
Bagoli Talli	Bagoli	Augustmuni
Bainoli	Bainoli	Jakholi
Bajira	Bajira	Jakholi
Bajyun	Bajyun	Augustmuni
Bam Siv	Bam Siv	Augustmuni
Ban Gaon Malla	Ban Gaon	Augustmuni
Ban Gaon Talla	Ban Gaon Malla	Augustmuni
Bankhil	Kanda	Augustmuni
Bansi	Bansi	Jakholi
Bansue	Bansue	Augustmuni
Barkot	Gahad	Augustmuni
Barsari	Mawan Gaon	Jakholi
Barshot	Jakhal	Jakholi
Barsir	Barsir	Jakholi
Barsu	Barsu	Augustmuni
Barsuri	Pipli	Augustmuni
Basta	Basta	Jakholi
Batoli	Dugra	Augustmuni

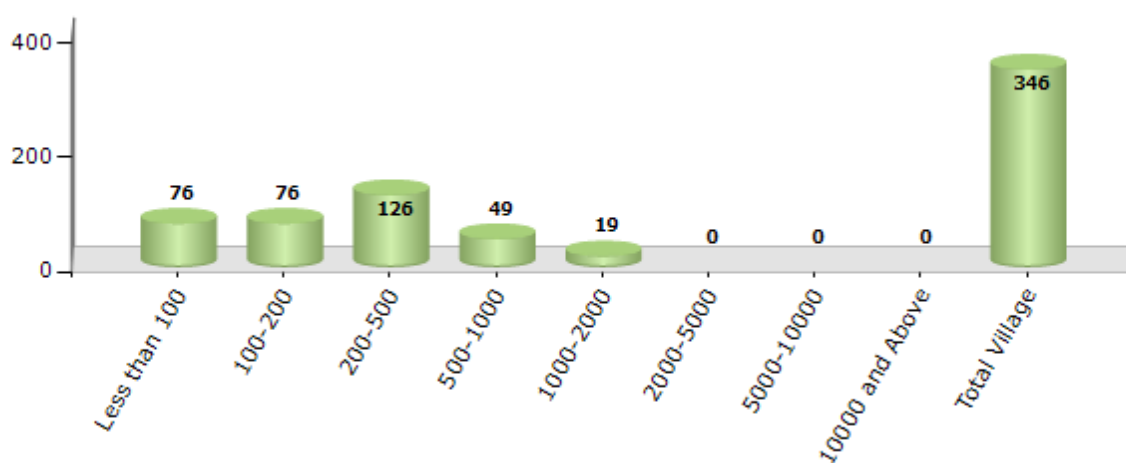
Contd....

Demographics

Number of Villages by Population Size - 2011

Less than 100	100-200	200-500	500-1000	1000-2000	2000-5000	5000-10000	10000 and Above	Total Village
76	76	126	49	19	0	0	0	346

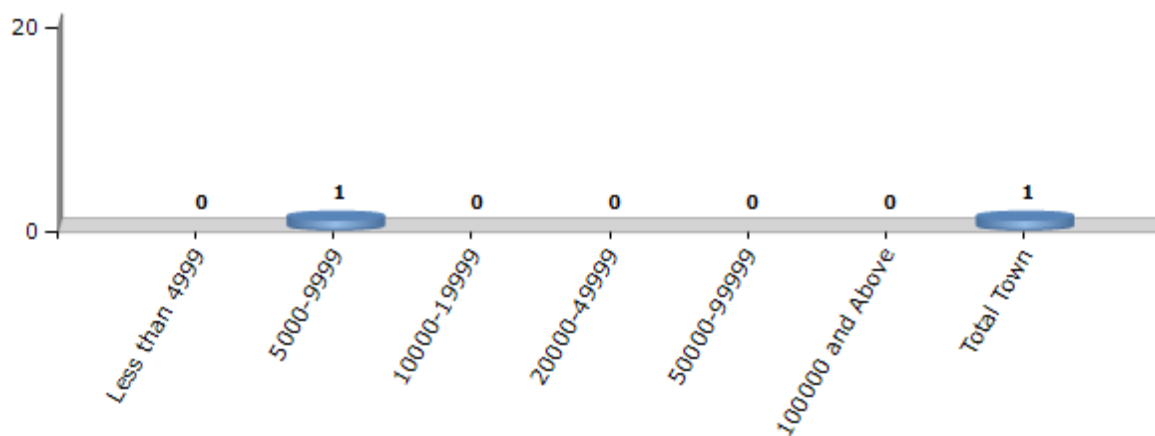
Number of Villages by Population Size - 2011



Number of Towns by Population Size - 2011

Less than 4999	5000-9999	10000-19999	20000-49999	50000-99999	100000 and Above	Total Town
0	1	0	0	0	0	1

Number of Towns by Population Size - 2011

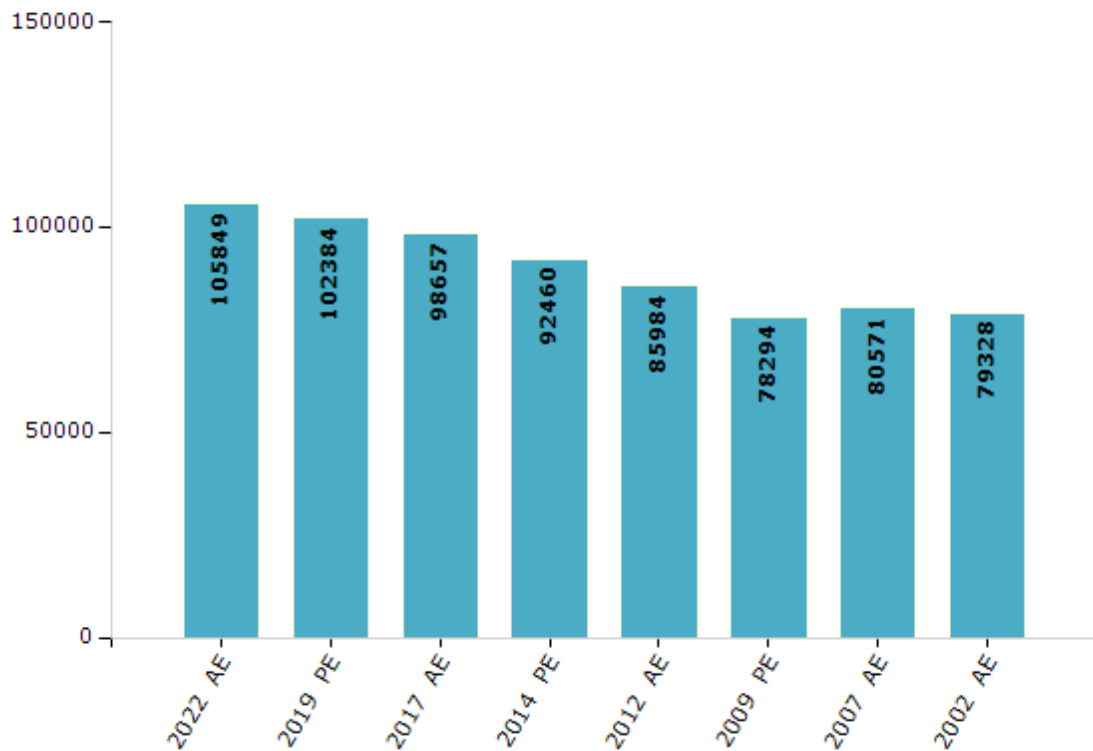


Electoral Features

Electors by Male & Female

Year	Male	Female	Others	Total	Year	Male	Female	Others	Total
2022 AE	53756	52093	0	105849	2009 PE	37665	40629	-	78294
2019 PE	52430	49941	13	102384	2007 AE	38012	42559	-	80571
2017 AE	50162	48495	0	98657	2004 PE	-	-	-	-
2014 PE	46393	46067	0	92460	2002 AE	38136	41192	-	79328
2012 AE	43190	42794	0	85984					

Number of Electors

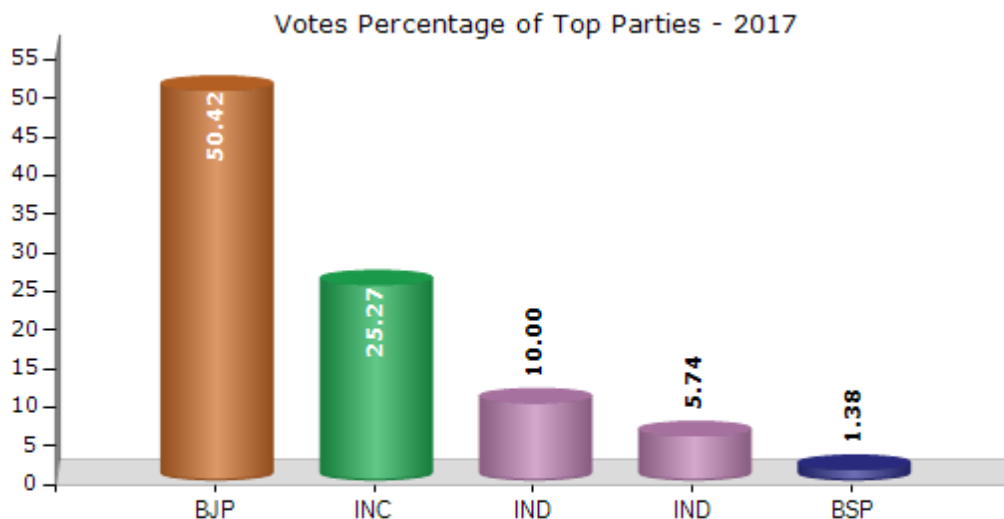


Note : AE : Assembly Election, PE : Assembly Segment of Parliamentary Election

Historical Summary Election Results

Summary Result of Assembly Election - 2017

Candidate Name	Party	Votes	Votes %
Bharat Singh	BJP	29333	50.42
Laxmi Singh Rana	INC	14701	25.27
Pradeep Prasad Thapliyal	IND	5818	10
Jagmohan Singh Rauthan	IND	3342	5.74
Surjeet Lal	BSP	801	1.38
Lalita Prasad	CPI	746	1.28
Bhagwati Prasad	IND	711	1.22
Jai Om Prakash	IND	642	1.1
Jagdish Singh	IND	359	0.62
Devendra Prasad	UKKD	237	0.41
Anil Rawat	IND	220	0.38
	NOTA	1266	2.18



Polling Station Level Election Results

Number and Name of Polling Stations (PS) (2022)

Number of Polling Stations	Name of Polling Stations	Number of Polling Stations	Name of Polling Stations
1	Govt. Primary School Kandali	22	Govt. Primary School Palakurali
2	Govt. Junior High School Taila (New)	23	Govt. Primary School Bajira Lasya
3	Govt. Primary School Jakhnoli	24	Govt. Primary School Dhankurali
4	Govt. Primary School Tat	25	Govt. Primary School Launga
5	Balika Sarva Shiksha Kendra Tuneta	26	Govt. Girls Junior High School Saklana
6	Govt. Higher Secondary School Tuneta	27	Govt. Inter College Ramashram-Jakholi
7	Govt. Higher Secondary School Mawan Gaon	28	Govt. Primary School Laluri
8	Govt. Primary School Paunthi	29	Govt. Primary School Tendwal
9	Govt. Primary School Paunthi (Room No. 2)	30	Govt. Primary School Makhet
10	Govt. Primary School Bhatwari	31	Govt. Primary School Budhana (Nausari)
11	Govt. Primary School Nandwangaon	32	Govt. Inter College Budhana
12	Govt. Primary School Chaunra	33	Govt. Primary School Mahargaon-Margaon
13	Govt. Primary School Panjana	34	Govt. Primary School Tyunkhar
14	Rajiv Gandhi Panchayat Bhavan Khal	35	Govt. Primary School Tyunkhar (South Part)
15	Govt. Primary School Chopra	36	Govt. Primary School Gharara
16	Govt. Higher Secondary School Pandavthali	37	Govt. Primary School Luthiyag
17	Govt. Higher Secondary School Kurchhola	38	Govt. Primary School Phalati
18	Govt. Primary School Dharkot	39	Govt. Upper Primary School Kailashanagar-Chaka
19	Govt. Primary School Gorti	40	Govt. Primary School Musadhung
20	Govt. Primary School Uroli	41	Govt. Primary School Kumri
21	Govt. Primary School Uchhana	42	Govt. Primary School Pali

Contd....

Polling Station Level Election Results

Polling Station-wise Votes Secured by Overall Top Five Parties in Rudraprayag Assembly in Assembly Election (AE) under Garhwal Parliamentary Constituency in Uttarakhand (2022)

No. of Polling Station	Winner - Bharat Singh Chaudhary (BJP)	Runner-up - Pradeep Prasad Thapliyal (INC)	3rd - Matbar Singh Kandari (IND)	4th - Mohit Dimri (UKKD)	5th - Sudhir Negi (IND)	NOTA	Other	Total Votes Secured
36	97	59	22	7	1	0	11	197
37	288	49	13	4	5	7	12	378
38	59	112	12	10	2	4	13	212
39	120	191	26	16	3	7	24	387
40	209	130	25	28	8	11	11	422
41	344	147	15	52	8	9	46	621
42	90	56	1	6	2	1	6	162
43	130	226	8	32	8	5	12	421
44	122	102	30	19	2	3	13	291
45	259	266	19	8	7	9	12	580
46	79	79	11	3	2	0	1	175
47	114	177	11	11	5	8	8	334
48	138	86	17	115	3	4	20	383
49	139	66	13	65	16	9	23	331
50	69	32	25	91	6	3	20	246
51	94	51	6	13	2	5	5	176
52	142	112	14	92	4	5	8	377
53	118	51	10	27	6	2	6	220
54	95	91	1	21	1	1	7	217
55	197	109	5	79	7	5	8	410
56	56	28	18	21	0	2	3	128
57	82	23	8	83	5	2	11	214
58	118	126	48	195	4	4	18	513
59	151	72	14	34	7	6	8	292
60	107	96	41	149	6	5	30	434
61	442	113	31	38	14	9	14	661
62	86	71	1	31	1	3	4	197
63	196	103	19	8	14	7	20	367
64	128	145	14	3	8	5	11	314
65	106	163	128	22	4	9	52	484
66	212	132	119	16	6	14	20	519
67	237	148	4	13	6	5	9	422
68	206	92	31	21	2	17	12	381
69	253	212	9	8	9	6	11	508
70	184	167	4	20	10	12	9	406

Contd....

Polling Station Level Election Results

Winner, Runner-up and 3rd Party Position & Winning Margin According to Polling Stations in Rudraprayag Assembly in Assembly Election (AE) under Garhwal Parliamentary Constituency in Uttarakhand (2022)

Polling Station Number	Winner Party	Winner Votes (%)	Runner-up Party	Runner-up Votes (%)	Winning Margin Votes (%)	Third Party	Third Party Votes (%)	Other Votes (%)
71	INC	93 (33.7)	BJP	88 (31.88)	5 (1.82)	UKKD	66 (23.91)	29 (10.51)
72	BJP	387 (55.6)	INC	160 (22.99)	227 (32.61)	UKKD	76 (10.92)	73 (10.49)
73	BJP	260 (47.36)	INC	226 (41.17)	34 (6.19)	UKKD	21 (3.83)	42 (7.65)
74	BJP	51 (48.57)	INC	45 (42.86)	6 (5.71)	IND (SN)	4 (3.81)	5 (4.76)
75	BJP	147 (58.8)	INC	76 (30.4)	71 (28.4)	IND (SN)	10 (4)	17 (6.8)
76	INC	116 (54.72)	BJP	62 (29.25)	54 (25.47)	IND (MSK)	11 (5.19)	23 (10.85)
77	INC	66 (41.51)	BJP	64 (40.25)	2 (1.26)	IND (MSK)	14 (8.81)	15 (9.43)
78	BJP	113 (40.65)	INC	108 (38.85)	5 (1.8)	IND (MSK)	23 (8.27)	34 (12.23)
79	BJP	161 (51.44)	INC	59 (18.85)	102 (32.59)	IND (MSK)	54 (17.25)	39 (12.46)
80	BJP	237 (58.09)	INC	113 (27.7)	124 (30.39)	UKKD	16 (3.92)	42 (10.29)
81	BJP	124 (49.21)	INC	84 (33.33)	40 (15.88)	IND (MSK)	18 (7.14)	26 (10.32)
82	INC	97 (33.22)	IND (MSK)	87 (29.79)	10 (3.43)	BJP	82 (28.08)	26 (8.9)
83	IND (MSK)	71 (29.1)	BJP	65 (26.64)	6 (2.46)	INC	45 (18.44)	63 (25.82)
84	BJP	194 (43.6)	INC	136 (30.56)	58 (13.04)	IND (MSK)	67 (15.06)	48 (10.79)
85	BJP	201 (50.5)	INC	123 (30.9)	78 (19.6)	IND (MSK)	43 (10.8)	31 (7.79)
86	IND (MSK)	147 (36.66)	BJP	135 (33.67)	12 (2.99)	INC	86 (21.45)	33 (8.23)
87	BJP	173 (49.57)	INC	100 (28.65)	73 (20.92)	IND (MSK)	30 (8.6)	46 (13.18)
88	BJP	132 (50.97)	INC	54 (20.85)	78 (30.12)	IND (MSK)	48 (18.53)	25 (9.65)
89	BJP	77 (42.78)	INC	61 (33.89)	16 (8.89)	IND (MSK)	26 (14.44)	16 (8.89)
90	BJP	137 (47.08)	INC	121 (41.58)	16 (5.5)	IND (MSK)	13 (4.47)	20 (6.87)
91	INC	231 (44.68)	BJP	196 (37.91)	35 (6.77)	IND (MSK)	50 (9.67)	40 (7.74)
92	BJP	241 (63.59)	UKKD	53 (13.98)	188 (49.61)	INC	50 (13.19)	35 (9.23)
93	BJP	157 (37.65)	INC	123 (29.5)	34 (8.15)	IND (MSK)	101 (24.22)	36 (8.63)
94	BJP	237 (54.86)	INC	126 (29.17)	111 (25.69)	IND (MSK)	28 (6.48)	41 (9.49)
95	BJP	113 (53.81)	INC	48 (22.86)	65 (30.95)	UKKD	24 (11.43)	25 (11.9)
96	BJP	144 (53.53)	INC	80 (29.74)	64 (23.79)	UKKD	31 (11.52)	14 (5.2)
97	BJP	87 (34.39)	INC	79 (31.23)	8 (3.16)	UKKD	64 (25.3)	23 (9.09)
98	BJP	42 (48.84)	UKKD	18 (20.93)	24 (27.91)	INC	16 (18.6)	10 (11.63)
99	BJP	100 (39.22)	INC	86 (33.73)	14 (5.49)	UKKD	33 (12.94)	36 (14.12)
100	BJP	264 (53.44)	INC	133 (26.92)	131 (26.52)	UKKD	41 (8.3)	56 (11.34)
101	BJP	294 (59.15)	INC	126 (25.35)	168 (33.8)	UKKD	33 (6.64)	44 (8.85)
102	BJP	231 (69.16)	UKKD	41 (12.28)	190 (56.88)	INC	38 (11.38)	24 (7.19)
103	UKKD	53 (42.74)	BJP	28 (22.58)	25 (20.16)	INC	27 (21.77)	16 (12.9)
104	BJP	41 (51.9)	INC	19 (24.05)	22 (27.85)	UKKD	15 (18.99)	4 (5.06)
105	BJP	251 (37.02)	INC	180 (26.55)	71 (10.47)	UKKD	169 (24.93)	78 (11.5)

Contd....

Socio-Economic Amenities - Rural

Access to Education Facilities

Particulars	Number of Villages (% of Population)				
	Available	Not Available	If Not Available (Distance of Nearest Facility)		
			A	B	C
Govt. Primary School	253 (89)	93 (11)	84 (9)	3 (0)	1 (0)
Private Primary School	33 (19)	313 (81)	1 (0)	0 (0)	0 (0)
Govt. Middle School	125 (56)	221 (44)	189 (39)	16 (2)	3 (1)
Private Middle School	14 (9)	332 (91)	5 (0)	0 (0)	0 (0)
Govt. Secondary School	62 (37)	284 (63)	219 (49)	56 (11)	7 (2)
Private Secondary School	5 (3)	341 (97)	0 (0)	0 (0)	0 (0)
Govt. Senior Secondary School	29 (18)	317 (82)	198 (53)	97 (25)	21 (4)
Private Senior Secondary School	2 (1)	344 (99)	0 (0)	0 (0)	0 (0)
Govt. Arts and Science Degree College	1 (1)	345 (99)	15 (5)	59 (21)	271 (72)
Private Arts and Science Degree College	0 (0)	346 (100)	0 (0)	0 (0)	0 (0)
Govt. Engineering College	0 (0)	346 (100)	0 (0)	0 (0)	346 (100)
Private Engineering College	0 (0)	346 (100)	0 (0)	0 (0)	0 (0)
Govt. Medicine College	0 (0)	346 (100)	0 (0)	0 (0)	346 (100)
Private Medicine College	0 (0)	346 (100)	0 (0)	0 (0)	0 (0)
Govt. Management Institute	0 (0)	346 (100)	0 (0)	0 (0)	346 (100)
Private Management Institute	0 (0)	346 (100)	0 (0)	0 (0)	0 (0)
Govt. Polytechnic	2 (3)	344 (97)	16 (4)	30 (7)	298 (86)
Private Polytechnic	0 (0)	346 (100)	0 (0)	0 (0)	0 (0)
Govt. Vocational Training School/ITI	1 (1)	345 (99)	5 (2)	39 (14)	301 (83)
Private Vocational Training School/ITI	0 (0)	346 (100)	0 (0)	0 (0)	0 (0)
Govt. Non Formal Training Centre	0 (0)	346 (100)	5 (2)	29 (7)	312 (91)
Private Non Formal Training Centre	0 (0)	346 (100)	0 (0)	0 (0)	0 (0)
Govt. School For Disabled	0 (0)	346 (100)	0 (0)	0 (0)	346 (100)
Private School For Disabled	0 (0)	346 (100)	0 (0)	0 (0)	0 (0)
Government Others	0 (0)	346 (100)	0 (0)	0 (0)	346 (100)
Private Others	0 (0)	346 (100)	0 (0)	0 (0)	0 (0)

Note : Distance A : Less than 5 km; B : Between 5-10 km; C : 10+ km.; Source : Data Analysis is based on 2011 Census.

DISCLAIMER

The Terms of Use and Disclaimer of Datanet India Private Limited (hereinafter referred to as "Datanet") for use of this analysis report of **Rudraprayag Assembly Constituency (Rudraprayag Vidhan Sabha)** :-

1. **Assembly Factbook™** is a Registered Trade Mark owned by Datanet.
2. All the maps are sketched and graphical representation only and have not been drawn to the scale and also not to represent the actual geographical area or boundary of the unit.
3. The data for the aforesaid analysis is based on authentic sources and has been culled from the various publications of Census, CSO and NSSO for district and block level data, various central and state government departments, Central & State Elections Commissions and the concerned Returning Officers' releases, Electoral Rolls, Election results and allied publications, internal assessment, surveys, estimates and analysis. Therefore, certain adjustment of data at micro level may have been done to arrive closer to the macro data.
4. Data have been provided on an "As Is" and "As AVAILABLE" basis
5. The colours shown in the maps or diagram and charts of a particular party, alliance or AC are indicative and do not represent them.
6. This publication which includes maps, sheets, graphs and data would be the property under copyright of Datanet only. The user may use these for its internal study, analysis and research purposes. It's public display, re-selling or any commercial uses by the user are not allowed.
7. Datanet has taken due care and caution in compilation and processing of data and allied information, but does not guarantee the accuracy, adequacy or completeness of any information/analysis and will be not responsible for any errors or omissions or for the results obtained from the use of such information/analysis.
8. All the contents for the publication have been culled from various authentic sources and Datanet reasonably believes such sources to be reliable, but does not make any representations, express or implied as to the accuracy or fitness of use of such information. The information or contents of the information/analysis do not constitute advice and should not be relied upon in making (or refraining from making) any decision. Any reliance placed upon the information provided by Datanet is the sole responsibility and strictly at the user's risk.
9. In no event will Datanet be liable for any damages (including, without limitation, damages for loss of business projects, or loss of profits) arising in contract, tort or otherwise from the use of or inability to use any of its contents, or from any action taken (or refrained from being taken) as a result of using the analysis or any of its contents. Datanet its directors, owners, editors, officials, employees, distributor and agents or any associate will not be liable for any errors in the information contained or any consequences arising from the use of the contents of the provided information/analysis.
10. If any provision of these terms and conditions is held invalid or illegal or unenforceable for any reason by any court of competent jurisdiction, such provision shall be severed and the remainder of provisions of the terms and conditions shall continue in full force and effect as if the Term of Use had been executed with the invalid, illegal or unenforceable provision eliminated.
11. If there are any discrepancies in the information provided, please bring it to attention of Datanet for suitable rectification measures.

Buy Online This Complete Book At
Datanet India eBooks Store

www.indiastatpublications.com

or go directly at

[http://www.indiastatpublications.com/
Assembly_factbook/Uttarakhand/Garhwal/ Rudraprayag](http://www.indiastatpublications.com/Assembly_factbook/Uttarakhand/Garhwal/Rudraprayag)

 **indiastat**elections

ISBN : 978-93-5822-512-9



9 789358 225129