



Uttarakhand

Assembly Factbook™

Tharali Assembly Constituency



Key Electoral Data of Tharali
Assembly Constituency (Vidhan Sabha)

Uttarakhand

Assembly Factbook™

Tharali Assembly Constituency



Tharali Vidhan Sabha

Editor & Director

Dr. R.K. Thukral

Research Editor

Dr. Shafeeq Rahman

**Compiled, Researched and Published by
Datanet India Pvt. Ltd.**

D-100, 1st Floor,

Okhla Industrial Area, Phase-I,

New Delhi- 110020.

Ph.: 91-11- 43580781-84

Email : support@indiastatpublications.com

Website : www.indiastatelections.com

Online Book Store :

www.indiastatpublications.com

Report No. : AFB/UK-005-0125

ISBN : 978-93-5822-568-6

First Edition : January, 2018

Eighth Updated Edition : January, 2025

Price : Rs.11500/-

US\$ 310

© Datanet India Pvt. Ltd.

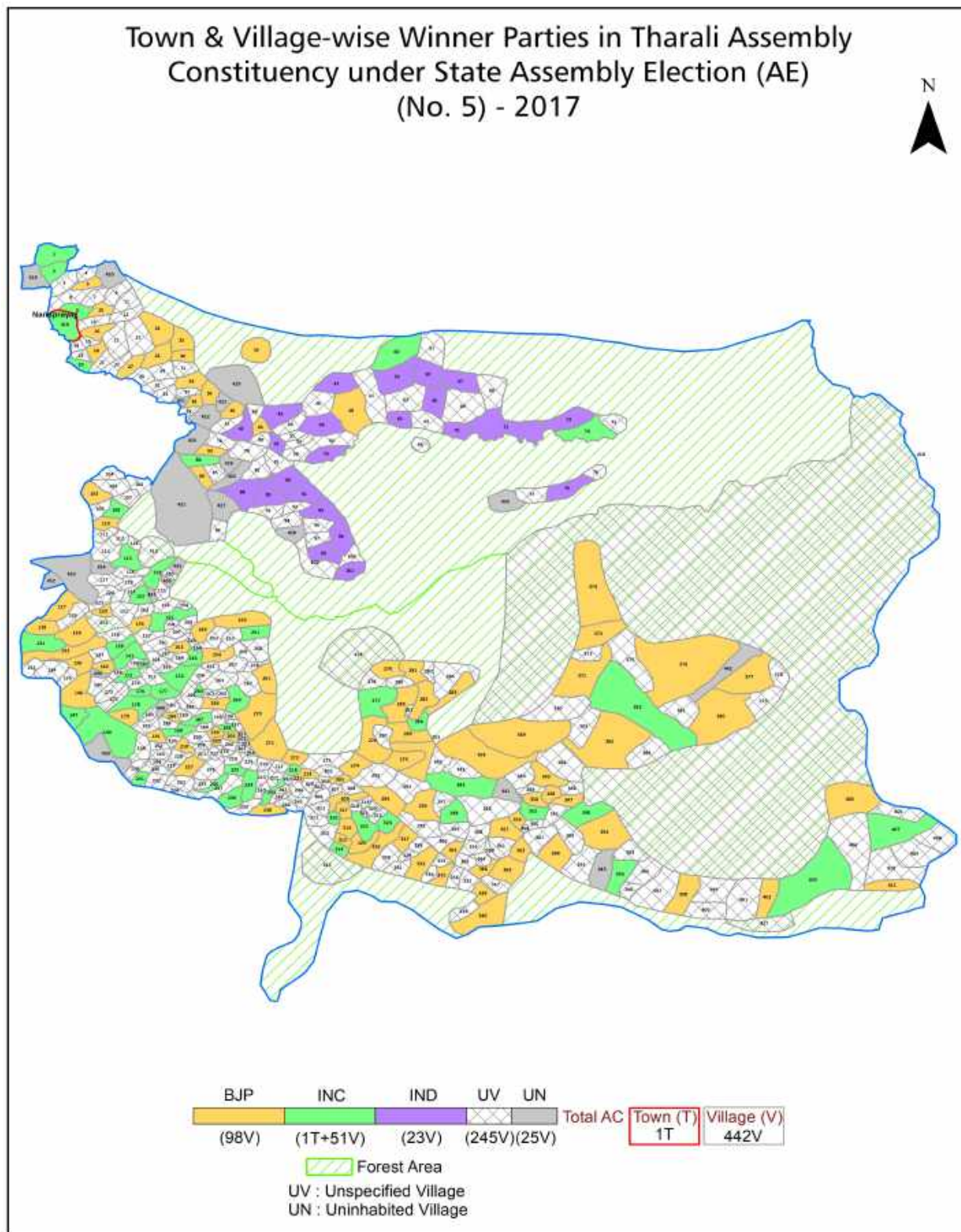
All rights reserved. No part of this book may be reproduced, stored in a retrieval system or transmitted in any form or by any means, mechanical photocopying, photographing, scanning, recording or otherwise without the prior written permission of the publisher. Please refer to Disclaimer at page no. 193 for the use of this publication.

Printed in India

Contents

No.	Particulars	Page No.
	Introduction	
1	Assembly Constituency - (Vidhan Sabha) at a Glance Features of Assembly as per Delimitation Commission of India (2008)	1-2
	Location and Political Maps	
2	Location Map Boundaries of Assembly Constituency - (Vidhan Sabha) in District Boundaries of Assembly Constituency under Parliamentary Constituency - (Lok Sabha) Town & Village-wise Winner Parties- 2024, 2022, 2019, 2017, 2014, 2012 and 2009	3-11
	Administrative Setup (2011)	
3	District Sub-district Towns Villages Inhabited Villages Uninhabited Villages Village Panchayat Intermediate Panchayat	12-32
	Demographics (2011)	
4	Population Households Rural/Urban Population Towns and Villages by Population Size Sex Ratio (Total & 0-6 Years) Religious Population Social Population Literacy Rate	33-34
	Electoral Features	
5	Important Dates of Last Elections Held Electors by Gender Service Electors Voters Voters Turnout Polling Stations & Average Number of Electors per Polling Station Electors by Age Group Present Elected Representatives	35-40
	Historical Summary Election Results	
6	Vote Share of Major Parties Winning Margin (Number & Percentage) Polarity of Parties Summary Result of Assembly Segment of Parliamentary Election 2024, 2019, 2014, 2009 and 2009 Summary Result of Assembly Elections 2022, 2017 and 2012	41-50
	Polling Station Level Election Results	
7	Name and Number of Polling Station 2024, 2022, 2019, 2017, 2014, 2012 and 2009 Polling Station-wise Electors, Voters & Voters Turnout 2024, 2022, 2019, 2017, 2014, 2012 and 2009 Polling Station wise Elections Results 2024, 2022, 2019, 2017, 2014, 2012 and 2009	51-162
8	Panchayat and Local Bodies Election Results Panchayat Result 2014 Urban Local Bodies Result 2013	163-173
	Share of Assembly Constituency	
9	Share of Assembly Constituency - (Vidhan Sabha) in State, District and Parliamentary Constituency - (Lok Sabha)	174
	Socio-Economic Amenities (2011)	
10	Access to Administrative Units Agricultural, Manufacturing and Industrial Commodities Demographic Indicators Education Health & Manpower Drinking Water Supply Sanitation Entertainment and Recreations Infrastructure Power Food Allocation Distribution and Marketing of Agriculture Commodities Infrastructure Transport and Road Infrastructure Communication Banking and Financial Services Land Use Irrigation Source	175-190
11	Abbreviation & Sources	191-192
12	Disclaimer	193

Location & Political Map



Administrative Setup

List of Village Panchayat & Intermediate Panchayat (Block) Name - 2011

Village Name	Village Panchayat Name	Intermediate Panchayat Name
Aali	Bedula	Narayan Bagar
Adra	Kulsari	Narayan Bagar
Agar Chimni	Neeladi	Narayan Bagar
Ala chak bura	Bura	Ghat
Alkot	Alkot	Narayan Bagar
Angoth	Angoth	Narayan Bagar
Angtoli	Angtoli	Tharali
Arkhandra	Chaliya Pani	Narayan Bagar
Ased	Ased	Narayan Bagar
Ashothi	Sinai Malla	Tharali
Atthu	Atthu	Dewal
Badiyun Sar	Pastoli	Narayan Bagar
Bahattara	Bahattara	Dewal
Bainoli Malli	Bainoli Malli	Tharali
Bainoli Talli	Bainoli Talli	Narayan Bagar
Bairau	Bairau	Ghat
Baisara	Devthali Baduni	Dewal
Bajai	Mopata	Dewal
Bajwar	Bajwar	Narayan Bagar
Bajwar	Maal Bajwar	Tharali
Balan	Balan	Dewal
Baligwar	Kanol	Ghat
Baman Bera	Kandai	Dewal
Baman Gaon	Harmimali	Narayan Bagar
Bamiyala	Bamiyala	Narayan Bagar
Banala	Nauna	Ghat
Banela	Banela	Tharali
Banj Bagar	Banj Bagar	Ghat
Bank	Bank	Dewal

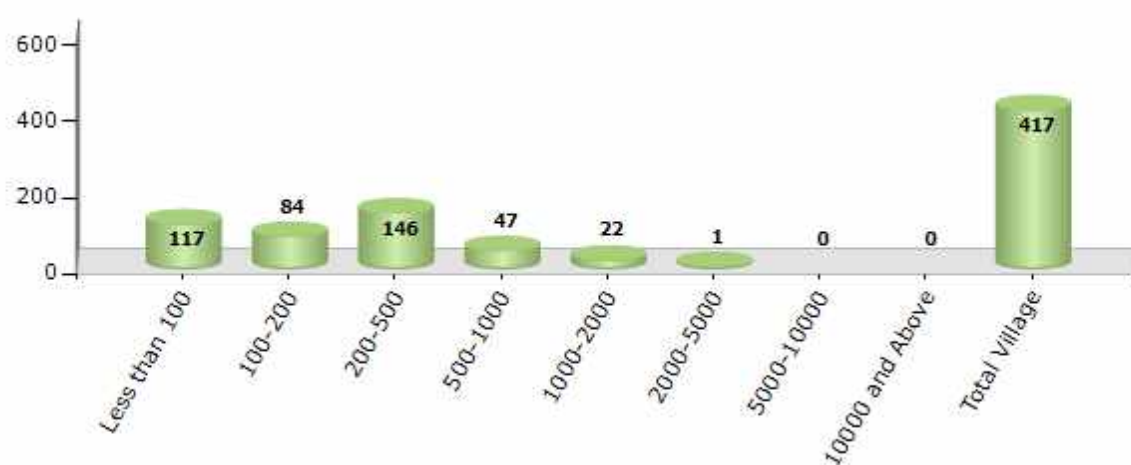
Contd....

Demographics

Number of Villages by Population Size - 2011

Less than 100	100-200	200-500	500-1000	1000-2000	2000-5000	5000-10000	10000 and Above	Total Village
117	84	146	47	22	1	0	0	417

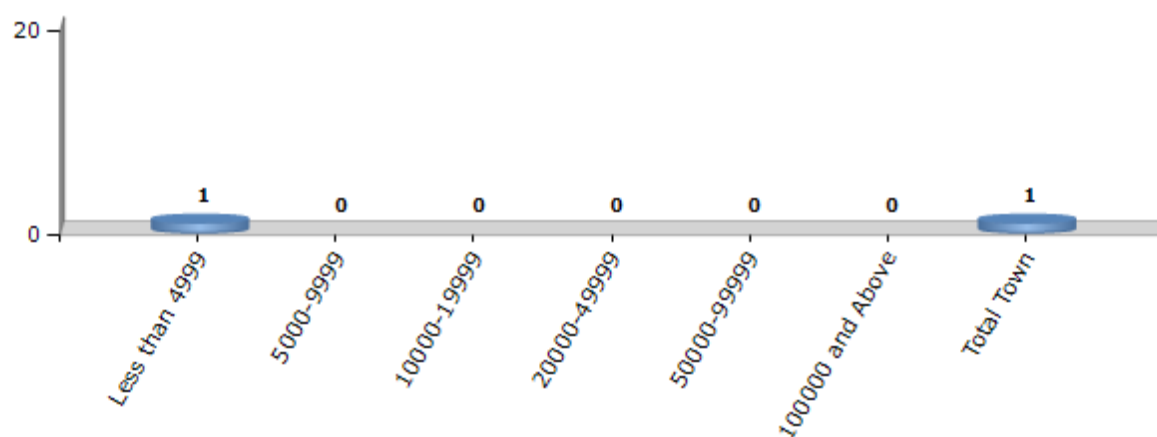
Number of Villages by Population Size - 2011



Number of Towns by Population Size - 2011

Less than 4999	5000-9999	10000-19999	20000-49999	50000-99999	100000 and Above	Total Town
1	0	0	0	0	0	1

Number of Towns by Population Size - 2011

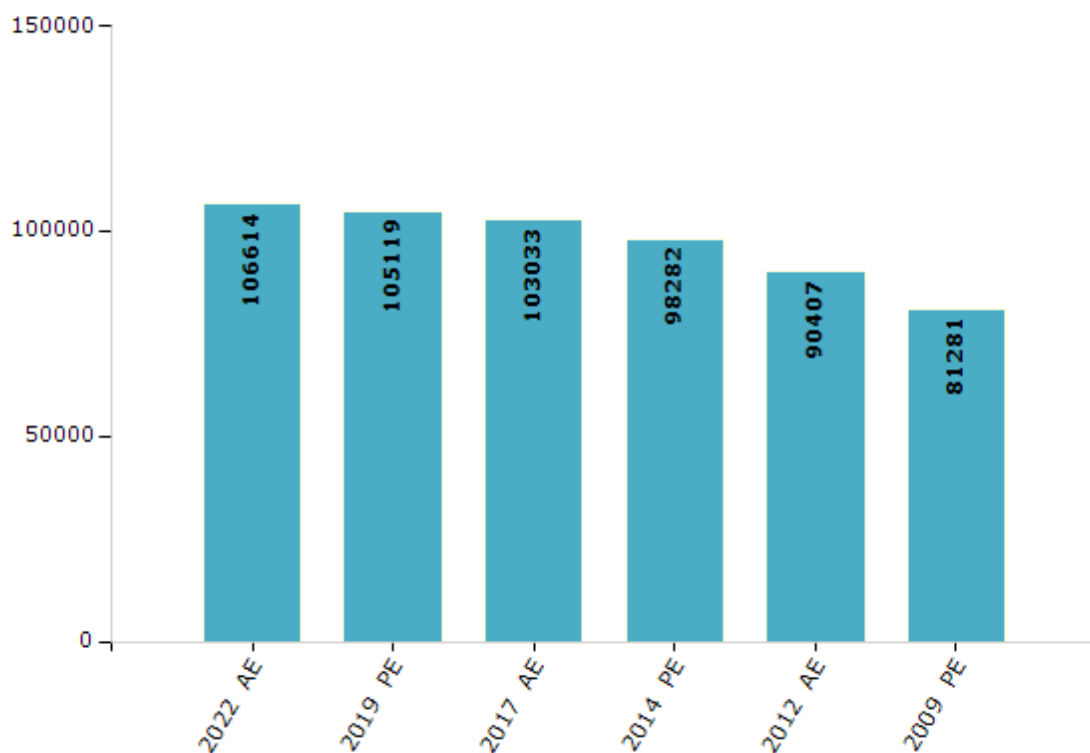


Electoral Features

Electors by Male & Female

Year	Male	Female	Others	Total	Year	Male	Female	Others	Total
2022 AE	56673	49941	0	106614	2009 PE	39123	42158	-	81281
2019 PE	55734	49385	0	105119	2007 AE	-	-	-	-
2017 AE	53831	49202	0	103033	2004 PE	-	-	-	-
2014 PE	51129	47153	0	98282	2002 AE	-	-	-	-
2012 AE	46671	43736	0	90407					

Number of Electors

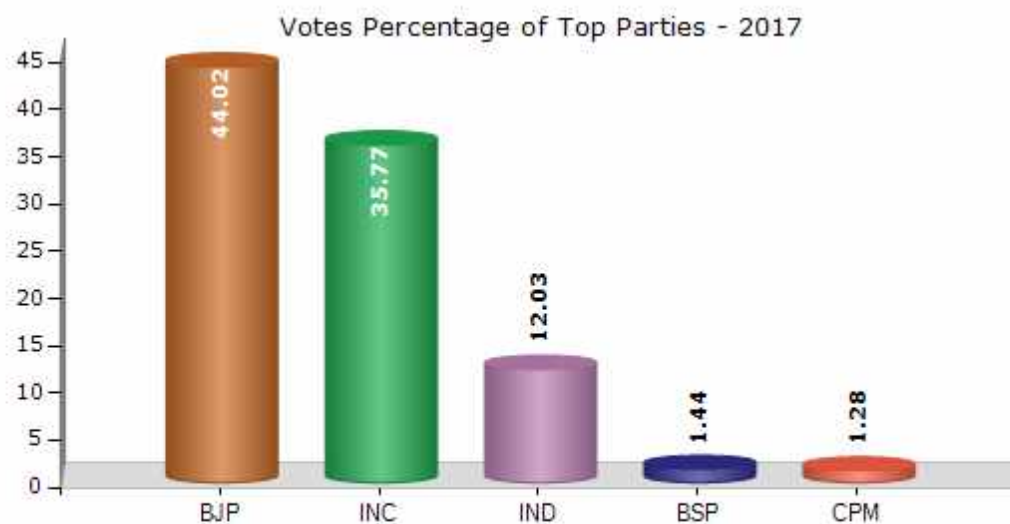


Note : AE : Assembly Election, PE : Assembly Segment of Parliamentary Election

Historical Summary Election Results

Summary Result of Assembly Election - 2017

Candidate Name	Party	Votes	Votes %
Magan Lal Shah	BJP	25931	44.02
Dr. Jeet Ram	INC	21073	35.77
Guddu Lal	IND	7089	12.03
Mohan Lal Kanyal	BSP	850	1.44
Rajpal Kanyal	CPM	752	1.28
Capt. (Retd) Ganesh Kumar	IND	593	1.01
Kasbi Lal Shah	UKKD	337	0.57
Birendra Lal Tamta	SP	270	0.46
Radha Ballabh Kanyal	PRAJAPA	255	0.43
	NOTA	1761	2.99



Polling Station Level Election Results

Number and Name of Polling Stations (PS) (2022)

Number of Polling Stations	Name of Polling Stations	Number of Polling Stations	Name of Polling Stations
1	Government Primary School Building Maithana	22	Government Primary School Building Jakhni
2	Government Primary School Building Pursadi	23	Government Primary School Building Luntara
3	Government Primary School Building Palethi	24	Government Primary School Building Lwani
4	Government Primary School Building Mair	25	Milan Kendra Building Charbang
5	Government Primary School Building Sartoli	26	Government Primary School Building Kurur
6	Government Primary School Building Dharkot	27	Government Primary School Building Farkhet
7	Government Primary School Building Nandprayag	28	Government Primary School Building Narangi
8	Government Primary School Building Gwai	29	Government Inter College Building Ghat
9	Government Primary School Building Bherni	30	Government Inter College Building Bhainswada
10	Government Primary School Building Rajbagthi	31	Government Inter College Building Kumjug
11	Government Girls Uppar Primary School Building Sema Chaka	32	Government Uppar Primary School Building Mathkot
12	Government Primary School Building Matai	33	Government Primary School Building Ramni
13	Government Primary School Building Kandagwar	34	Government Primary School Building Chamula Ghuni
14	Government Primary School Building Khaltara	35	Government Primary School Building Padergaon
15	Government Primary School Building Bairaskund	36	Government Inter College Building Boora
16	Government Primary School Building Gandasu	37	Government Uppar Primary School Building Ala
17	Government Primary School Building Pagna	38	Government Uppar Primary School Building Waduk
18	Government Primary School Building Kandai	39	Forest Guest House Building Sital
19	Government Primary School Building Mankhi	40	Forest Guest House Building Pranati
20	Government Primary School Building Choprakot	41	Government Primary School Building Geri
21	Government Primary School Building Khunana	42	Government High School Building Peri

Contd....

Polling Station Level Election Results

Polling Station-wise Votes Secured by Overall Top Five Parties in Tharali Assembly in Assembly Election (AE) under Garhwal Parliamentary Constituency in Uttarakhand (2022)

No. of Polling Station	Winner - Bhupal Ram Tamta (BJP)	Runner-up - Dr. Jeet Ram (INC)	3rd - Guddu Lal (AAP)	4th - Naini Ram (UJPA)	5th - Kunwar Ram (CPI(M))	NOTA	Other	Total Votes Secured
36	237	244	44	4	21	16	26	592
37	178	182	16	9	1	6	19	411
38	331	85	7	8	5	6	23	465
39	113	26	7	2	2	0	4	154
40	54	67	1	2	0	1	2	127
41	130	69	6	5	3	0	5	218
42	253	158	9	2	5	5	15	447
43	228	125	7	11	2	6	15	394
44	492	118	10	9	9	4	23	665
45	337	29	43	10	2	4	12	437
46	140	185	26	10	3	8	16	388
47	227	166	275	13	6	15	38	740
48	300	133	45	10	4	4	20	516
49	222	143	29	9	2	5	18	428
50	291	114	20	10	7	9	19	470
51	94	18	8	5	0	3	12	140
52	165	90	41	1	2	4	8	311
53	151	151	3	7	0	0	11	323
54	238	100	11	5	0	5	16	375
55	175	124	6	1	2	4	8	320
56	82	65	12	2	2	1	6	170
57	193	188	4	6	1	2	3	397
58	198	154	1	4	2	2	3	364
59	164	182	2	2	5	1	4	360
60	158	81	1	2	2	2	5	251
61	122	217	1	11	0	4	6	361
62	148	148	2	3	1	1	2	305
63	92	37	0	2	2	2	6	141
64	56	51	5	4	1	0	2	119
65	206	243	1	2	5	10	13	480
66	148	86	2	4	3	5	10	258
67	87	55	1	4	1	0	5	153
68	98	145	6	25	2	1	2	279
69	247	147	4	4	4	3	9	418
70	96	77	1	5	1	0	6	186

Contd....

Polling Station Level Election Results

Winner, Runner-up and 3rd Party Position & Winning Margin According to Polling Stations in Tharali Assembly in Assembly Election (AE) under Garhwal Parliamentary Constituency in Uttarakhand (2022)

Polling Station Number	Winner Party	Winner Votes (%)	Runner-up Party	Runner-up Votes (%)	Winning Margin Votes (%)	Third Party	Third Party Votes (%)	Other Votes (%)
71	BJP	72 (48)	INC	59 (39.33)	13 (8.67)	UJPA	7 (4.67)	12 (8)
72	BJP	184 (54.12)	INC	138 (40.59)	46 (13.53)	UJPA	6 (1.76)	12 (3.53)
73	BJP	175 (57.38)	INC	101 (33.11)	74 (24.27)	AAP	7 (2.3)	22 (7.21)
74	INC	147 (58.57)	BJP	75 (29.88)	72 (28.69)	CPI(M)	6 (2.39)	23 (9.16)
75	BJP	122 (50.62)	INC	103 (42.74)	19 (7.88)	BSP	4 (1.66)	12 (4.98)
76	BJP	66 (68.04)	INC	20 (20.62)	46 (47.42)	UKKD	3 (3.09)	8 (8.25)
77	BJP	69 (65.09)	INC	36 (33.96)	33 (31.13)	BSP	1 (0.94)	0 (0)
78	BJP	53 (55.79)	INC	33 (34.74)	20 (21.05)	IND (GK)	6 (6.32)	3 (3.16)
79	BJP	85 (52.47)	INC	61 (37.65)	24 (14.82)	UJPA	4 (2.47)	12 (7.41)
80	INC	84 (46.93)	BJP	69 (38.55)	15 (8.38)	UJPA	7 (3.91)	19 (10.61)
81	BJP	63 (51.64)	INC	54 (44.26)	9 (7.38)	UJPA	4 (3.28)	1 (0.82)
82	INC	97 (44.29)	BJP	87 (39.73)	10 (4.56)	UKKD	21 (9.59)	14 (6.39)
83	BJP	126 (56)	INC	83 (36.89)	43 (19.11)	IND (GK)	4 (1.78)	12 (5.33)
84	INC	119 (58.91)	BJP	63 (31.19)	56 (27.72)	AAP	8 (3.96)	12 (5.94)
85	BJP	92 (61.74)	INC	50 (33.56)	42 (28.18)	UKKD	3 (2.01)	4 (2.68)
86	BJP	127 (51.63)	INC	111 (45.12)	16 (6.51)	UJPA	3 (1.22)	5 (2.03)
87	BJP	102 (51.52)	INC	84 (42.42)	18 (9.1)	UJPA	3 (1.52)	9 (4.55)
88	BJP	251 (49.31)	INC	223 (43.81)	28 (5.5)	IND (GK)	9 (1.77)	26 (5.11)
89	INC	226 (49.24)	BJP	202 (44.01)	24 (5.23)	UJPA	13 (2.83)	18 (3.92)
90	INC	183 (71.76)	BJP	63 (24.71)	120 (47.05)	AAP	3 (1.18)	6 (2.35)
91	BJP	172 (71.07)	INC	61 (25.21)	111 (45.86)	UJPA	4 (1.65)	5 (2.07)
92	BJP	99 (57.89)	INC	66 (38.6)	33 (19.29)	IND (GK)	3 (1.75)	3 (1.75)
93	INC	284 (55.47)	BJP	184 (35.94)	100 (19.53)	UJPA	13 (2.54)	31 (6.05)
94	INC	221 (60.22)	BJP	131 (35.69)	90 (24.53)	CPI(M)	5 (1.36)	10 (2.72)
95	INC	241 (49.39)	BJP	215 (44.06)	26 (5.33)	UJPA	6 (1.23)	26 (5.33)
96	INC	97 (62.18)	BJP	51 (32.69)	46 (29.49)	BSP	3 (1.92)	5 (3.21)
97	BJP	139 (54.94)	INC	99 (39.13)	40 (15.81)	BSP	3 (1.19)	12 (4.74)
98	INC	166 (50.46)	BJP	134 (40.73)	32 (9.73)	CPI(M)	15 (4.56)	14 (4.26)
99	BJP	120 (48.98)	INC	106 (43.27)	14 (5.71)	CPI(M)	12 (4.9)	7 (2.86)
100	BJP	103 (61.31)	INC	55 (32.74)	48 (28.57)	CPI(M)	5 (2.98)	5 (2.98)
101	BJP	136 (50.75)	INC	114 (42.54)	22 (8.21)	BSP	7 (2.61)	11 (4.1)
102	BJP	311 (71.99)	INC	85 (19.68)	226 (52.31)	BSP	10 (2.31)	26 (6.02)
103	BJP	261 (56.49)	INC	184 (39.83)	77 (16.66)	UJPA	5 (1.08)	12 (2.6)
104	BJP	109 (55.61)	INC	76 (38.78)	33 (16.83)	CPI(M)	6 (3.06)	5 (2.55)
105	BJP	157 (64.08)	INC	62 (25.31)	95 (38.77)	UJPA	10 (4.08)	16 (6.53)

Contd....

Socio-Economic Amenities - Rural

Access to Education Facilities

Particulars	Number of Villages (% of Population)				
	Available	Not Available	If Not Available (Distance of Nearest Facility)		
			A	B	C
Govt. Primary School	322 (96)	95 (4)	90 (4)	5 (0)	0 (0)
Private Primary School	28 (18)	389 (82)	0 (0)	0 (0)	0 (0)
Govt. Middle School	132 (56)	285 (44)	252 (39)	28 (4)	4 (1)
Private Middle School	15 (12)	402 (88)	1 (0)	0 (0)	0 (0)
Govt. Secondary School	59 (29)	358 (71)	262 (47)	77 (18)	17 (5)
Private Secondary School	6 (5)	411 (95)	0 (0)	0 (0)	0 (0)
Govt. Senior Secondary School	29 (16)	388 (84)	208 (41)	119 (26)	58 (15)
Private Senior Secondary School	3 (1)	414 (99)	0 (0)	1 (1)	0 (0)
Govt. Arts and Science Degree College	1 (0)	416 (100)	0 (0)	0 (0)	416 (100)
Private Arts and Science Degree College	0 (0)	417 (100)	0 (0)	0 (0)	0 (0)
Govt. Engineering College	0 (0)	417 (100)	0 (0)	0 (0)	417 (100)
Private Engineering College	0 (0)	417 (100)	0 (0)	0 (0)	0 (0)
Govt. Medicine College	0 (0)	417 (100)	0 (0)	0 (0)	417 (100)
Private Medicine College	0 (0)	417 (100)	0 (0)	0 (0)	0 (0)
Govt. Management Institute	0 (0)	417 (100)	0 (0)	0 (0)	417 (100)
Private Management Institute	0 (0)	417 (100)	0 (0)	0 (0)	0 (0)
Govt. Polytechnic	0 (0)	417 (100)	0 (0)	1 (0)	416 (100)
Private Polytechnic	0 (0)	417 (100)	0 (0)	0 (0)	0 (0)
Govt. Vocational Training School/ITI	2 (1)	415 (99)	0 (0)	0 (0)	415 (99)
Private Vocational Training School/ITI	0 (0)	417 (100)	0 (0)	0 (0)	0 (0)
Govt. Non Formal Training Centre	3 (1)	414 (99)	0 (0)	0 (0)	414 (99)
Private Non Formal Training Centre	0 (0)	417 (100)	0 (0)	0 (0)	0 (0)
Govt. School For Disabled	0 (0)	417 (100)	0 (0)	0 (0)	417 (100)
Private School For Disabled	0 (0)	417 (100)	0 (0)	0 (0)	0 (0)
Government Others	0 (0)	417 (100)	0 (0)	0 (0)	103 (31)
Private Others	0 (0)	417 (100)	0 (0)	2 (0)	312 (69)

Note : Distance A : Less than 5 km; B : Between 5-10 km; C : 10+ km.; Source : Data Analysis is based on 2011 Census.

DISCLAIMER

The Terms of Use and Disclaimer of Datanet India Private Limited (hereinafter referred to as "Datanet") for use of this analysis report of **Tharali Assembly Constituency (Tharali Vidhan Sabha)** :-

1. **Assembly Factbook™** is a Registered Trade Mark owned by Datanet.
2. All the maps are sketched and graphical representation only and have not been drawn to the scale and also not to represent the actual geographical area or boundary of the unit.
3. The data for the aforesaid analysis is based on authentic sources and has been culled from the various publications of Census, CSO and NSSO for district and block level data, various central and state government departments, Central & State Elections Commissions and the concerned Returning Officers' releases, Electoral Rolls, Election results and allied publications, internal assessment, surveys, estimates and analysis. Therefore, certain adjustment of data at micro level may have been done to arrive closer to the macro data.
4. Data have been provided on an "As Is" and "As AVAILABLE" basis
5. The colours shown in the maps or diagram and charts of a particular party, alliance or AC are indicative and do not represent them.
6. This publication which includes maps, sheets, graphs and data would be the property under copyright of Datanet only. The user may use these for its internal study, analysis and research purposes. It's public display, re-selling or any commercial uses by the user are not allowed.
7. Datanet has taken due care and caution in compilation and processing of data and allied information, but does not guarantee the accuracy, adequacy or completeness of any information/analysis and will be not responsible for any errors or omissions or for the results obtained from the use of such information/analysis.
8. All the contents for the publication have been culled from various authentic sources and Datanet reasonably believes such sources to be reliable, but does not make any representations, express or implied as to the accuracy or fitness of use of such information. The information or contents of the information/analysis do not constitute advice and should not be relied upon in making (or refraining from making) any decision. Any reliance placed upon the information provided by Datanet is the sole responsibility and strictly at the user's risk.
9. In no event will Datanet be liable for any damages (including, without limitation, damages for loss of business projects, or loss of profits) arising in contract, tort or otherwise from the use of or inability to use any of its contents, or from any action taken (or refrained from being taken) as a result of using the analysis or any of its contents. Datanet its directors, owners, editors, officials, employees, distributor and agents or any associate will not be liable for any errors in the information contained or any consequences arising from the use of the contents of the provided information/analysis.
10. If any provision of these terms and conditions is held invalid or illegal or unenforceable for any reason by any court of competent jurisdiction, such provision shall be severed and the remainder of provisions of the terms and conditions shall continue in full force and effect as if the Term of Use had been executed with the invalid, illegal or unenforceable provision eliminated.
11. If there are any discrepancies in the information provided, please bring it to attention of Datanet for suitable rectification measures.

Buy Online This Complete Book At
Datanet India eBooks Store

www.indiastatpublications.com

or go directly at

[http://www.indiastatpublications.com/
Assembly_factbook/Uttarakhand/Garhwal/Tharali](http://www.indiastatpublications.com/Assembly_factbook/Uttarakhand/Garhwal/Tharali)

 **indiastat**elections

ISBN : 978-93-5822-568-6



9 789358 122568 6