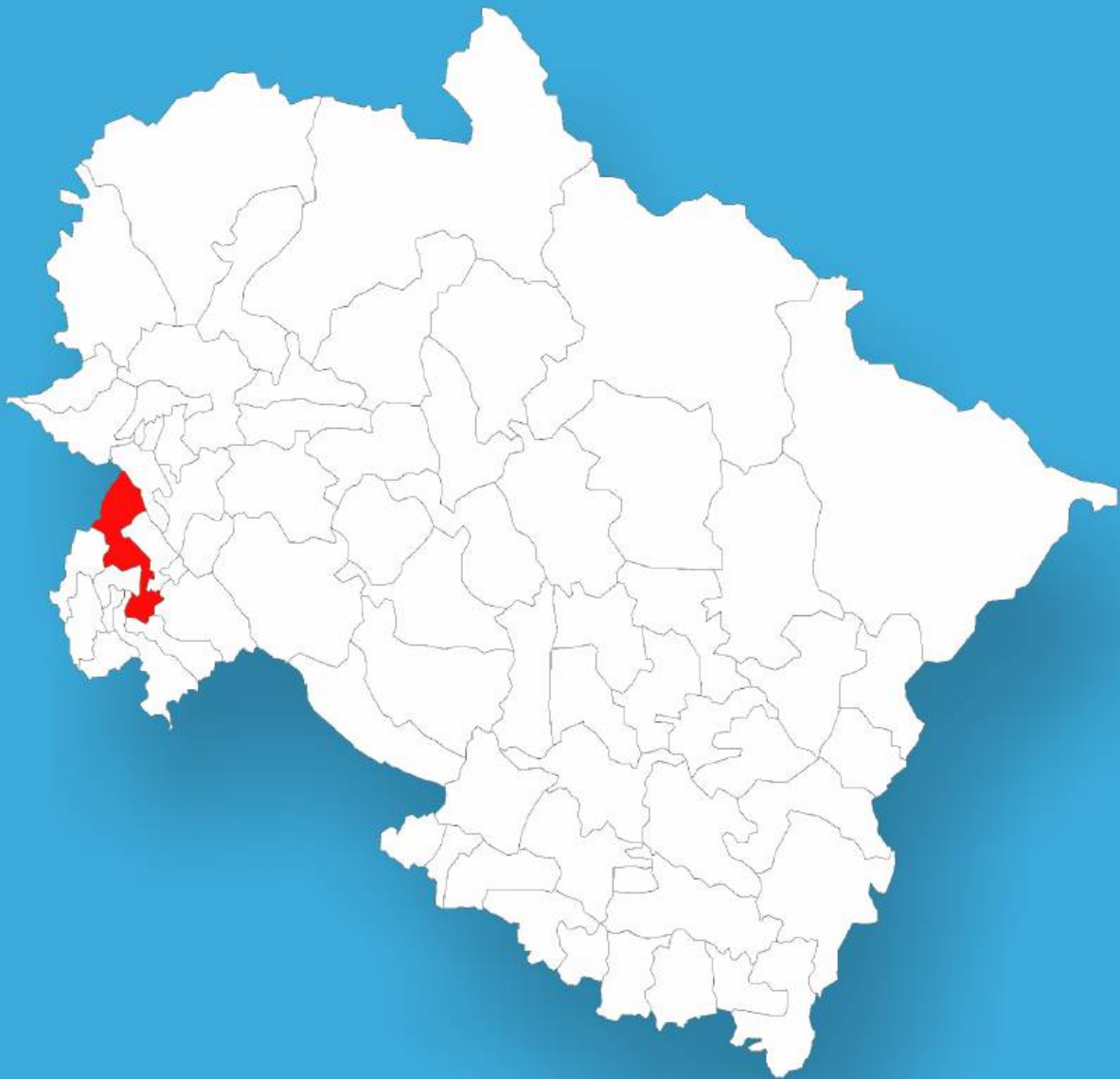




Uttarakhand

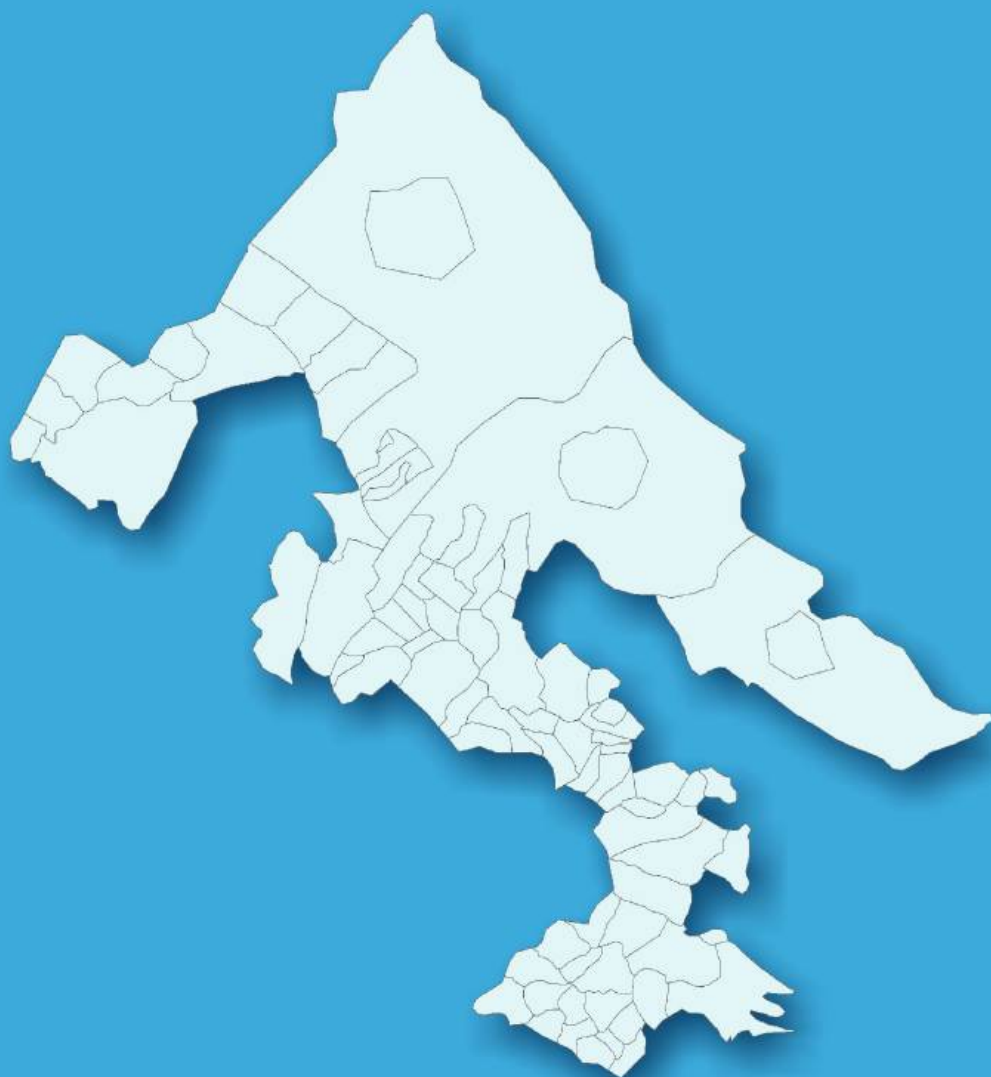
# Assembly Factbook™

Jwalapur Assembly Constituency



Key Electoral Data of Jwalapur  
Assembly Constituency (Vidhan Sabha)

Uttarakhand  
**Assembly Factbook**<sup>TM</sup>  
Jwalapur Assembly Constituency



Jwalapur Vidhan Sabha

**Editor & Director**

Dr. R.K. Thukral

**Research Editor**

Dr. Shafeeq Rahman

**Compiled, Researched and Published by  
Datanet India Pvt. Ltd.**

D-100, 1st Floor,

Okhla Industrial Area, Phase-I,

New Delhi- 110020.

Ph.: 91-11- 43580781-84

Email : support@indiastatpublications.com

Website : www.indiastatelections.com

**Online Book Store :**

www.indiastatpublications.com

**Report No. :** AFB/UK-027-0624

**ISBN :** 978-93-5822-658-4

**First Edition :** January, 2018

**Seventh Updated Edition :** June, 2024

**Price :** Rs.11500/-

US\$ 310

**© Datanet India Pvt. Ltd.**

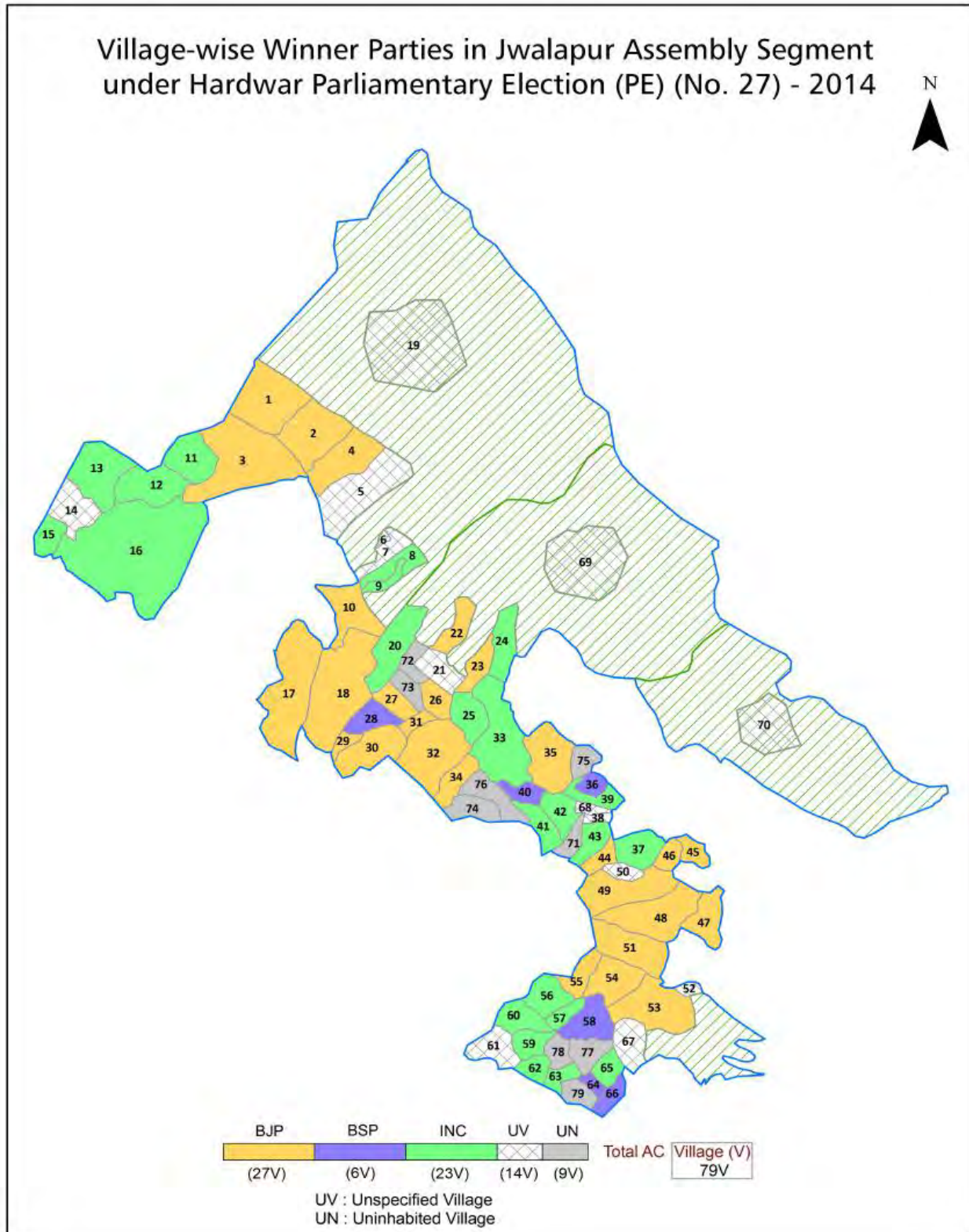
All rights reserved. No part of this book may be reproduced, stored in a retrieval system or transmitted in any form or by any means, mechanical photocopying, photographing, scanning, recording or otherwise without the prior written permission of the publisher. Please refer to Disclaimer at page no. 153 for the use of this publication.

Printed in India

## Contents

No.	Particulars	Page No.
	<b>Introduction</b>	
1	Assembly Constituency - (Vidhan Sabha) at a Glance   Features of Assembly as per Delimitation Commission of India (2008)	1-2
	<b>Location and Political Maps</b>	
2	Location Map   Boundaries of Assembly Constituency - (Vidhan Sabha) in District   Boundaries of Assembly Constituency under Parliamentary Constituency - (Lok Sabha)   Village-wise Winner Parties- 2024, 2022, 2019, 2017, 2014, 2012 and 2009	3-11
	<b>Administrative Setup (2011)</b>	
3	District   Sub-district   Towns   Villages   Inhabited Villages   Uninhabited Villages   Village Panchayat   Intermediate Panchayat	12-16
	<b>Demographics (2011)</b>	
4	Population   Households   Rural/Urban Population   Villages by Population Size   Sex Ratio (Total & 0-6 Years)   Religious Population   Social Population   Literacy Rate	17-18
	<b>Electoral Features</b>	
5	Important Dates of Last Elections Held   Electors by Gender   Service Electors   Voters   Voters Turnout   Polling Stations & Average Number of Electors per Polling Station   Electors by Age Group   Present Elected Representatives	19-24
	<b>Historical Summary Election Results</b>	
6	Vote Share of Major Parties   Winning Margin (Number & Percentage)   Polarity of Parties   Summary Result of Assembly Segment of Parliamentary Election 2024, 2019, 2014, 2009 and 2009   Summary Result of Assembly Elections 2022, 2017 and 2012	25-34
	<b>Polling Station Level Election Results</b>	
7	Name and Number of Polling Station 2024, 2022, 2019, 2017, 2014, 2012 and 2009   Polling Station-wise Electors, Voters & Voters Turnout 2024, 2022, 2019, 2017, 2014, 2012 and 2009   Polling Station wise Elections Results 2024, 2022, 2019, 2017, 2014, 2012 and 2009	35-129
	<b>Panchayat and Local Bodies Election Results</b>	
8	Panchayat Result 2014   Urban Local Bodies Result 2013	130-133
	<b>Share of Assembly Constituency</b>	
9	Share of Assembly Constituency - (Vidhan Sabha) in State, District and Parliamentary Constituency - (Lok Sabha)	134
	<b>Socio-Economic Amenities (2011)</b>	
10	Access to Administrative Units   Agricultural, Manufacturing and Industrial Commodities   Demographic Indicators   Education   Health & Manpower   Drinking Water Supply   Sanitation   Entertainment and Recreations Infrastructure   Power   Food Allocation Distribution and Marketing of Agriculture Commodities Infrastructure   Transport and Road Infrastructure   Communication   Banking and Financial Services   Land Use   Irrigation Source	135-150
11	<b>Abbreviation &amp; Sources</b>	151-152
12	<b>Disclaimer</b>	153

Location & Political Map



## Administrative Setup

### List of Village Panchayat & Intermediate Panchayat (Block) Name - 2011

Village Name	Village Panchayat Name	Intermediate Panchayat Name
Ahmadpur Grunt	Ahmadpur Grunt	Bahadarabad
Alawalpur	Alwalpur	Bahadarabad
Alipur Ibrahimpur Urf Ikkad	Alipur Ibrahimpur Urf Ikkad	Bahadarabad
Asafnagar Grunt	Kotamurad Nagar	Bahadarabad
Atmalpur Bangla	Atmalpur Bangla	Bahadarabad
Aurangzeb Pur	Aurangzeb Pur	Bhagwanpur
Banjarewala Grunt	Banjarewala Grunt	Bhagwanpur
Begampur	Khedni	Bahadarabad
Bodaheer Mohiuddinpur	Bodaheer Mohiuddinpur	Bahadarabad
Dadpur Govindpur	Dadpur Govindpur	Bahadarabad
Dadubans Grunt	Dadubans Grunt	Bahadarabad
Daluwala Grunt	Daluwala Grunt	Bahadarabad
Daluwala Khurd	Daluwala Mazbata	Bahadarabad
Daluwala Mazbata	Daluwala Mazbata	Bahadarabad
Daulatpur/Urf Budhwa Shaheed	Daulatpur/Urf Budhwa Shaheed	Bhagwanpur
Dhaulkhanda Range	-	Forest CD Block Hardwar
Dinarpur	Shadevpur Shavajpur	Bahadarabad
Fatehullapur Telpura	Fatehullapur Telpura	Bhagwanpur
Firozpur Urf Buggawala	Naukra Grunt	Bhagwanpur
Garh	Garh	Bahadarabad
Hadipur Grant	Mohd Begpur Urf Takabhari	Bahadarabad
Hasanawala	Fatehullapur Telpura	Bhagwanpur
Hazara Grunt	Hazara Grunt	Bahadarabad
Ibrahimpur Masahi	Ibrahimpur Masahi	Bhagwanpur
Jamalpur Khurd	Sultanpur Mazari	Bahadarabad
Jasawa Wala	Jasawa Wala	Bahadarabad
Jhiryan Grunt	Jhiryan Grunt	Bhagwanpur
Kalanjara Jadid	Ahmadpur Gurt	Bahadarabad
Kasampur	Kasampur	Bahadarabad

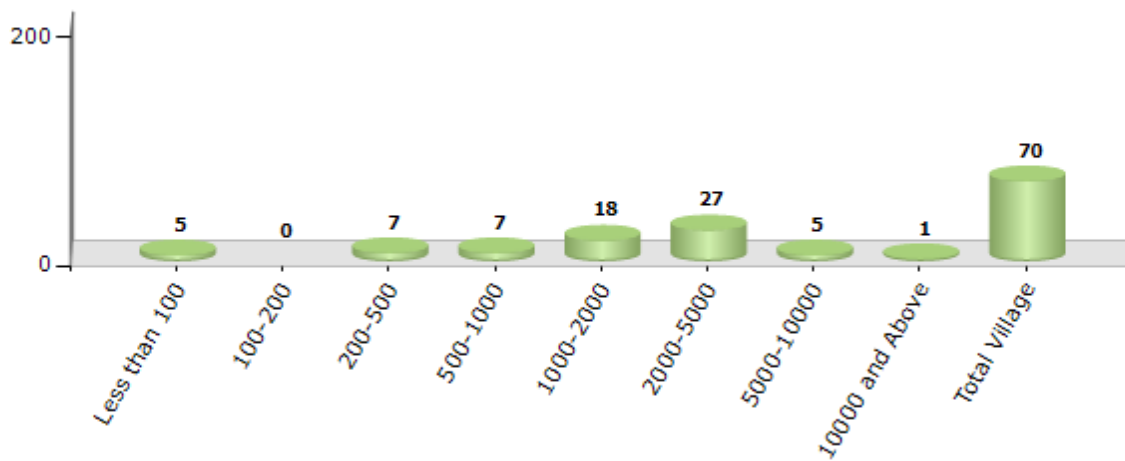
Contd....

## Demographics

### Number of Villages by Population Size - 2011

Less than 100	100-200	200-500	500-1000	1000-2000	2000-5000	5000-10000	10000 and Above	Total Village
5	0	7	7	18	27	5	1	70

Number of Villages by Population Size - 2011

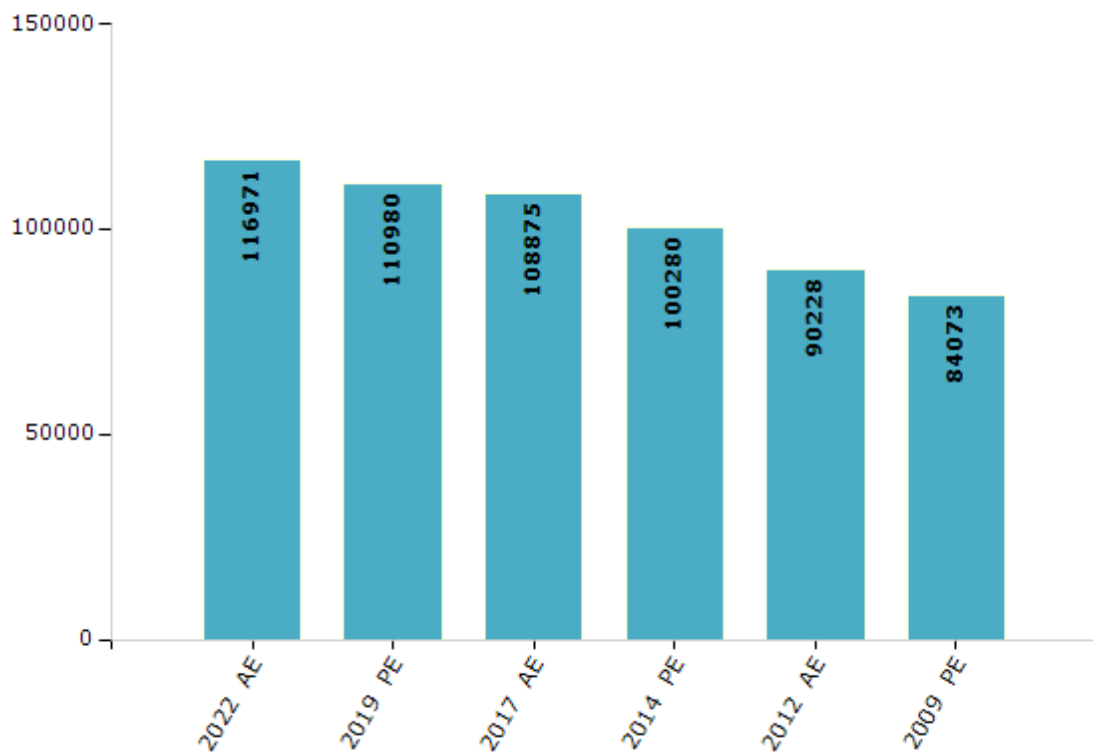


## Electoral Features

### Electors by Male & Female

Year	Male	Female	Others	Total	Year	Male	Female	Others	Total
2022 AE	62417	54541	13	116971	2009 PE	45356	38717	-	84073
2019 PE	59565	51402	13	110980	2007 AE	-	-	-	-
2017 AE	58478	50383	14	108875	2004 PE	-	-	-	-
2014 PE	54449	45831	0	100280	2002 AE	-	-	-	-
2012 AE	49195	41033	0	90228					

Number of Electors



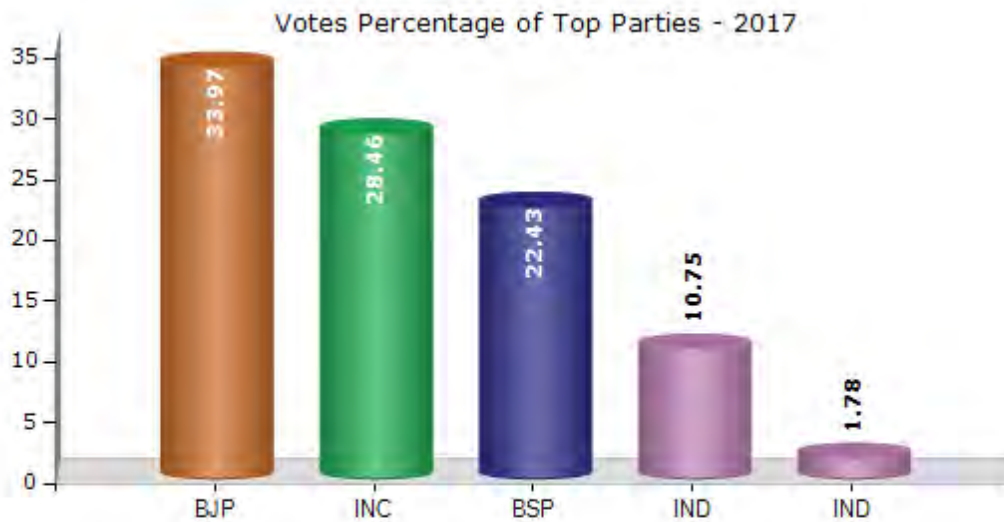
Note : AE : Assembly Election, PE : Assembly Segment of Parliamentary Election



## Historical Summary Election Results

### Summary Result of Assembly Election - 2017

Candidate Name	Party	Votes	Votes %
Suresh Rathor	BJP	29513	33.97
S.P.Singh Engineer	INC	24725	28.46
Mulki Raj	BSP	19483	22.43
Braj Rani	IND	9338	10.75
Subhash Chanchal	IND	1544	1.78
Madan Lal	IND	1077	1.24
Arvind Kumar	IND	559	0.64
	NOTA	638	0.73



**Polling Station Level Election Results**

**Number and Name of Polling Stations (PS) (2022)**

<b>Number of Polling Stations</b>	<b>Name of Polling Stations</b>	<b>Number of Polling Stations</b>	<b>Name of Polling Stations</b>
1	Khedli Rn 1	22	Rohalki Kishanpur
2	Khedali Rn 2	23	Rohalki Kishanpur
3	Begampur	24	Rohalki Kishanpur
4	Dadupur Govindpur	25	Alipur Ibrahimpur Rn 1
5	Dadupur Govindpur	26	Alipur Ibrahimpur Rn 2
6	Dadupur Govindpur	27	Alipur Bagowali
7	Dadupur Govindpur	28	Ahmadpur Grant
8	Dadupur Govindpur	29	Ahmadpur Grant
9	Dadupur Govindpur	30	Sahdevpur Sahwajpur Rn 1
10	Dadupur Govindpur	31	Sahdevpur Sahwajpur Rn 2
11	Dadupur Govindpur	32	Dinarpur
12	Dadupur Govindpur	33	Subhashgarh
13	Bahadrabad Rn 13	34	Bodahedi Mohiuddinpur
14	Bahadrabad Rn 15	35	Bodahedi Mohiuddinpur
15	Jamalpur Khurd Rn 1	36	Bodahedi Mohiuddinpur
16	Jamalpur Khurd Rn 2	37	Bodahedi Mohiuddinpur
17	Atmalpur Bongla	38	Peetpur Rn 1
18	Atmalpur Bongla	39	Peetpur Rn 2
19	Atmalpur Bongla	40	Nasirpur Nastarpur
20	Atmalpur Bongla	41	Mo.Pur Urf Jhivahedi
21	Atmalpur Bongla	42	Alawalpur

Contd....

## Polling Station Level Election Results

### Polling Station-wise Votes Secured by Overall Top Five Parties in Jwalapur Assembly in Assembly Election (AE) under Hardwar Parliamentary Constituency in Uttarakhand (2022)

No. of Polling Station	Winner - Er. Ravi Bahadur (INC)	Runner-up - Suresh Rathore (BJP)	3rd - Shishpal Singh (BSP)	4th - S.P.Singh Engineer (ASPKR)	5th - Mamta Singh (AAP)	NOTA	Other	Total Votes Secured
36	546	7	18	3	0	3	1	578
37	507	9	2	8	0	1	1	528
38	46	104	488	21	12	4	11	686
39	26	53	391	7	8	2	14	501
40	84	27	55	3	5	2	0	176
41	153	128	318	7	3	2	1	612
42	315	59	546	33	14	1	5	973
43	830	15	13	7	2	4	2	873
44	708	35	27	1	1	2	5	779
45	464	10	3	3	3	1	1	485
46	27	102	125	83	9	2	2	350
47	388	25	65	15	1	5	4	503
48	879	52	76	7	0	2	12	1028
49	432	57	38	2	5	1	4	539
50	346	14	68	42	1	1	2	474
51	556	81	48	2	0	1	5	693
52	661	33	24	18	0	1	3	740
53	80	116	263	331	7	10	13	820
54	324	197	130	232	5	7	13	908
55	679	7	18	34	8	2	3	751
56	385	2	3	0	0	1	2	393
57	911	39	12	27	3	2	4	998
58	314	273	1	1	5	1	18	613
59	120	460	62	9	3	0	3	657
60	74	521	1	1	2	5	5	609
61	462	254	176	45	6	6	7	956
62	692	142	36	25	3	5	5	908
63	346	63	195	65	4	5	1	679
64	203	39	249	41	15	4	3	554
65	693	33	15	3	3	1	5	753
66	487	27	3	11	4	1	4	537
67	548	313	9	0	8	9	4	891
68	516	94	60	63	5	8	8	754
69	546	102	58	27	6	5	6	750
70	59	134	508	187	6	5	11	910

Contd....

**Polling Station Level Election Results**

**Winner, Runner-up and 3rd Party Position & Winning Margin According to Polling Stations in Jwalapur Assembly in Assembly Election (AE) under Hardwar Parliamentary Constituency in Uttarakhand (2022)**

Polling Station Number	Winner Party	Winner Votes (%)	Runner-up Party	Runner-up Votes (%)	Winning Margin Votes (%)	Third Party	Third Party Votes (%)	Other Votes (%)
71	BJP	245 (60.49)	INC	70 (17.28)	175 (43.21)	BSP	63 (15.56)	27 (6.67)
72	BJP	295 (55.35)	INC	206 (38.65)	89 (16.7)	ASPKR	19 (3.56)	13 (2.44)
73	BJP	349 (49.79)	INC	273 (38.94)	76 (10.85)	BSP	59 (8.42)	20 (2.85)
74	INC	224 (38.49)	BJP	191 (32.82)	33 (5.67)	BSP	160 (27.49)	7 (1.2)
75	BSP	512 (68.72)	BJP	142 (19.06)	370 (49.66)	INC	38 (5.1)	53 (7.11)
76	INC	543 (76.26)	BJP	117 (16.43)	426 (59.83)	BSP	32 (4.49)	20 (2.81)
77	INC	343 (59.24)	BJP	213 (36.79)	130 (22.45)	BSP	16 (2.76)	7 (1.21)
78	BJP	390 (56.36)	INC	162 (23.41)	228 (32.95)	BSP	92 (13.29)	48 (6.94)
79	INC	348 (89.46)	BSP	18 (4.63)	330 (84.83)	BJP	15 (3.86)	8 (2.06)
80	INC	262 (82.65)	BJP	40 (12.62)	222 (70.03)	AAP	7 (2.21)	8 (2.52)
81	INC	458 (89.11)	BJP	39 (7.59)	419 (81.52)	BSP	8 (1.56)	9 (1.75)
82	INC	440 (78.15)	BJP	107 (19.01)	333 (59.14)	ASPKR	9 (1.6)	7 (1.24)
83	INC	516 (96.09)	BJP	11 (2.05)	505 (94.04)	ASPKR	7 (1.3)	3 (0.56)
84	INC	696 (87)	BJP	85 (10.63)	611 (76.37)	ASPKR	11 (1.38)	8 (1)
85	BJP	367 (54.21)	INC	199 (29.39)	168 (24.82)	BSP	54 (7.98)	57 (8.42)
86	BJP	265 (54.19)	INC	176 (35.99)	89 (18.2)	BSP	24 (4.91)	24 (4.91)
87	BJP	592 (77.08)	INC	109 (14.19)	483 (62.89)	BSP	44 (5.73)	23 (2.99)
88	BSP	378 (45)	BJP	209 (24.88)	169 (20.12)	ASPKR	107 (12.74)	146 (17.38)
89	BSP	94 (47.96)	BJP	73 (37.24)	21 (10.72)	INC	19 (9.69)	10 (5.1)
90	BJP	221 (41.62)	INC	219 (41.24)	2 (0.38)	BSP	70 (13.18)	21 (3.95)
91	INC	347 (55.79)	BJP	174 (27.97)	173 (27.82)	BSP	84 (13.5)	17 (2.73)
92	INC	254 (44.8)	BJP	254 (44.8)	0 (0)	ASPKR	24 (4.23)	35 (6.17)
93	INC	573 (69.04)	BJP	101 (12.17)	472 (56.87)	BSP	100 (12.05)	56 (6.75)
94	BSP	489 (60.52)	BJP	166 (20.54)	323 (39.98)	INC	145 (17.95)	8 (0.99)
95	BJP	136 (62.39)	INC	72 (33.03)	64 (29.36)	BSP	6 (2.75)	4 (1.83)
96	BJP	324 (47.16)	INC	321 (46.72)	3 (0.44)	BSP	35 (5.09)	7 (1.02)
97	BJP	498 (62.09)	INC	280 (34.91)	218 (27.18)	LOKJANP	8 (1)	16 (2)
98	BSP	397 (60.7)	BJP	99 (15.14)	298 (45.56)	INC	84 (12.84)	74 (11.31)
99	INC	269 (43.67)	BSP	197 (31.98)	72 (11.69)	BJP	100 (16.23)	50 (8.12)
100	BJP	247 (47.68)	BSP	140 (27.03)	107 (20.65)	INC	102 (19.69)	29 (5.6)
101	BJP	247 (50.41)	BSP	128 (26.12)	119 (24.29)	INC	52 (10.61)	63 (12.86)
102	BJP	210 (51.34)	ASPKR	99 (24.21)	111 (27.13)	INC	60 (14.67)	40 (9.78)
103	INC	436 (60.22)	ASPKR	144 (19.89)	292 (40.33)	BSP	73 (10.08)	71 (9.81)
104	BJP	402 (82.55)	INC	72 (14.78)	330 (67.77)	ASPKR	6 (1.23)	7 (1.44)
105	INC	344 (71.22)	BJP	110 (22.77)	234 (48.45)	AAP	7 (1.45)	22 (4.55)

Contd....

## Socio-Economic Amenities - Rural

### Access to Education Facilities

Particulars	Number of Villages (% of Population)				
	Available	Not Available	If Not Available (Distance of Nearest Facility)		
			A	B	C
Govt. Primary School	64 (98)	6 (2)	5 (2)	0 (0)	0 (0)
Private Primary School	21 (33)	49 (67)	1 (0)	0 (0)	0 (0)
Govt. Middle School	34 (69)	36 (31)	20 (14)	9 (8)	0 (0)
Private Middle School	10 (17)	60 (83)	3 (3)	1 (2)	0 (0)
Govt. Secondary School	13 (30)	57 (70)	25 (26)	14 (23)	2 (3)
Private Secondary School	6 (6)	64 (94)	7 (9)	5 (4)	0 (0)
Govt. Senior Secondary School	5 (9)	65 (91)	24 (28)	15 (20)	7 (16)
Private Senior Secondary School	5 (8)	65 (92)	5 (8)	5 (6)	5 (5)
Govt. Arts and Science Degree College	1 (2)	69 (98)	0 (0)	0 (0)	0 (0)
Private Arts and Science Degree College	0 (0)	70 (100)	9 (14)	19 (23)	41 (61)
Govt. Engineering College	0 (0)	70 (100)	0 (0)	8 (12)	52 (78)
Private Engineering College	0 (0)	70 (100)	0 (0)	2 (3)	8 (8)
Govt. Medicine College	1 (2)	69 (98)	0 (0)	8 (11)	61 (87)
Private Medicine College	1 (2)	69 (98)	0 (0)	0 (0)	0 (0)
Govt. Management Institute	1 (2)	69 (98)	0 (0)	0 (0)	0 (0)
Private Management Institute	1 (2)	69 (98)	0 (0)	11 (12)	58 (86)
Govt. Polytechnic	0 (0)	70 (100)	1 (3)	9 (12)	60 (85)
Private Polytechnic	0 (0)	70 (100)	0 (0)	0 (0)	0 (0)
Govt. Vocational Training School/ITI	1 (4)	69 (96)	5 (7)	6 (13)	51 (67)
Private Vocational Training School/ITI	0 (0)	70 (100)	0 (0)	5 (6)	2 (3)
Govt. Non Formal Training Centre	10 (18)	60 (82)	3 (3)	8 (14)	43 (60)
Private Non Formal Training Centre	0 (0)	70 (100)	0 (0)	2 (1)	4 (4)
Govt. School For Disabled	0 (0)	70 (100)	0 (0)	0 (0)	70 (100)
Private School For Disabled	0 (0)	70 (100)	0 (0)	0 (0)	0 (0)
Government Others	0 (0)	70 (100)	0 (0)	0 (0)	70 (100)
Private Others	0 (0)	70 (100)	0 (0)	0 (0)	0 (0)

Note : Distance A : Less than 5 km; B : Between 5-10 km; C : 10+ km.; Source : Data Analysis is based on 2011 Census.

## DISCLAIMER

The Terms of Use and Disclaimer of Datanet India Private Limited (hereinafter referred to as "Datanet") for use of this analysis report of **Jwalapur Assembly Constituency (Jwalapur Vidhan Sabha) :-**

1. **Assembly Factbook™** is a Registered Trade Mark owned by Datanet.
2. All the maps are sketched and graphical representation only and have not been drawn to the scale and also not to represent the actual geographical area or boundary of the unit.
3. The data for the aforesaid analysis is based on authentic sources and has been culled from the various publications of Census, CSO and NSSO for district and block level data, various central and state government departments, Central & State Elections Commissions and the concerned Returning Officers' releases, Electoral Rolls, Election results and allied publications, internal assessment, surveys, estimates and analysis. Therefore, certain adjustment of data at micro level may have been done to arrive closer to the macro data.
4. Data have been provided on an "As Is" and "As AVAILABLE" basis
5. The colours shown in the maps or diagram and charts of a particular party, alliance or AC are indicative and do not represent them.
6. This publication which includes maps, sheets, graphs and data would be the property under copyright of Datanet only. The user may use these for its internal study, analysis and research purposes. It's public display, re-selling or any commercial uses by the user are not allowed.
7. Datanet has taken due care and caution in compilation and processing of data and allied information, but does not guarantee the accuracy, adequacy or completeness of any information/analysis and will be not responsible for any errors or omissions or for the results obtained from the use of such information/analysis.
8. All the contents for the publication have been culled from various authentic sources and Datanet reasonably believes such sources to be reliable, but does not make any representations, express or implied as to the accuracy or fitness of use of such information. The information or contents of the information/analysis do not constitute advice and should not be relied upon in making (or refraining from making) any decision. Any reliance placed upon the information provided by Datanet is the sole responsibility and strictly at the user's risk.
9. In no event will Datanet be liable for any damages (including, without limitation, damages for loss of business projects, or loss of profits) arising in contract, tort or otherwise from the use of or inability to use any of its contents, or from any action taken (or refrained from being taken) as a result of using the analysis or any of its contents. Datanet its directors, owners, editors, officials, employees, distributor and agents or any associate will not be liable for any errors in the information contained or any consequences arising from the use of the contents of the provided information/analysis.
10. If any provision of these terms and conditions is held invalid or illegal or unenforceable for any reason by any court of competent jurisdiction, such provision shall be severed and the remainder of provisions of the terms and conditions shall continue in full force and effect as if the Term of Use had been executed with the invalid, illegal or unenforceable provision eliminated.
11. If there are any discrepancies in the information provided, please bring it to attention of Datanet for suitable rectification measures.

**Buy Online This Complete Book At  
Datanet India eBooks Store**

[www.indiastatpublications.com](http://www.indiastatpublications.com)

or go directly at

[http://www.indiastatpublications.com/  
Assembly\\_factbook/Uttarakhand/Hardwar/Jwalapur](http://www.indiastatpublications.com/Assembly_factbook/Uttarakhand/Hardwar/Jwalapur)

 **india**stat**elections**

ISBN : 978-93-5822-658-4



9 789358 226584