



Uttarakhand

Assembly Factbook™

Haldwani Assembly Constituency



Key Electoral Data of Haldwani
Assembly Constituency (Vidhan Sabha)

Uttarakhand

Assembly Factbook™

Haldwani Assembly Constituency



Haldwani Vidhan Sabha

Editor & Director

Dr. R.K. Thukral

Research Editor

Dr. Shafeeq Rahman

**Compiled, Researched and Published by
Datanet India Pvt. Ltd.**

D-100, 1st Floor,

Okhla Industrial Area, Phase-I,

New Delhi- 110020.

Ph.: 91-11- 43580781-84

Email : support@indiastatpublications.com

Website : www.indiastatelections.com

Online Book Store :

www.indiastatpublications.com

Report No. : AFB/UK-059-0125

ISBN : 978-93-5822-598-3

First Edition : January, 2018

Eighth Updated Edition : January, 2025

Price : Rs.11500/-

US\$ 310

© Datanet India Pvt. Ltd.

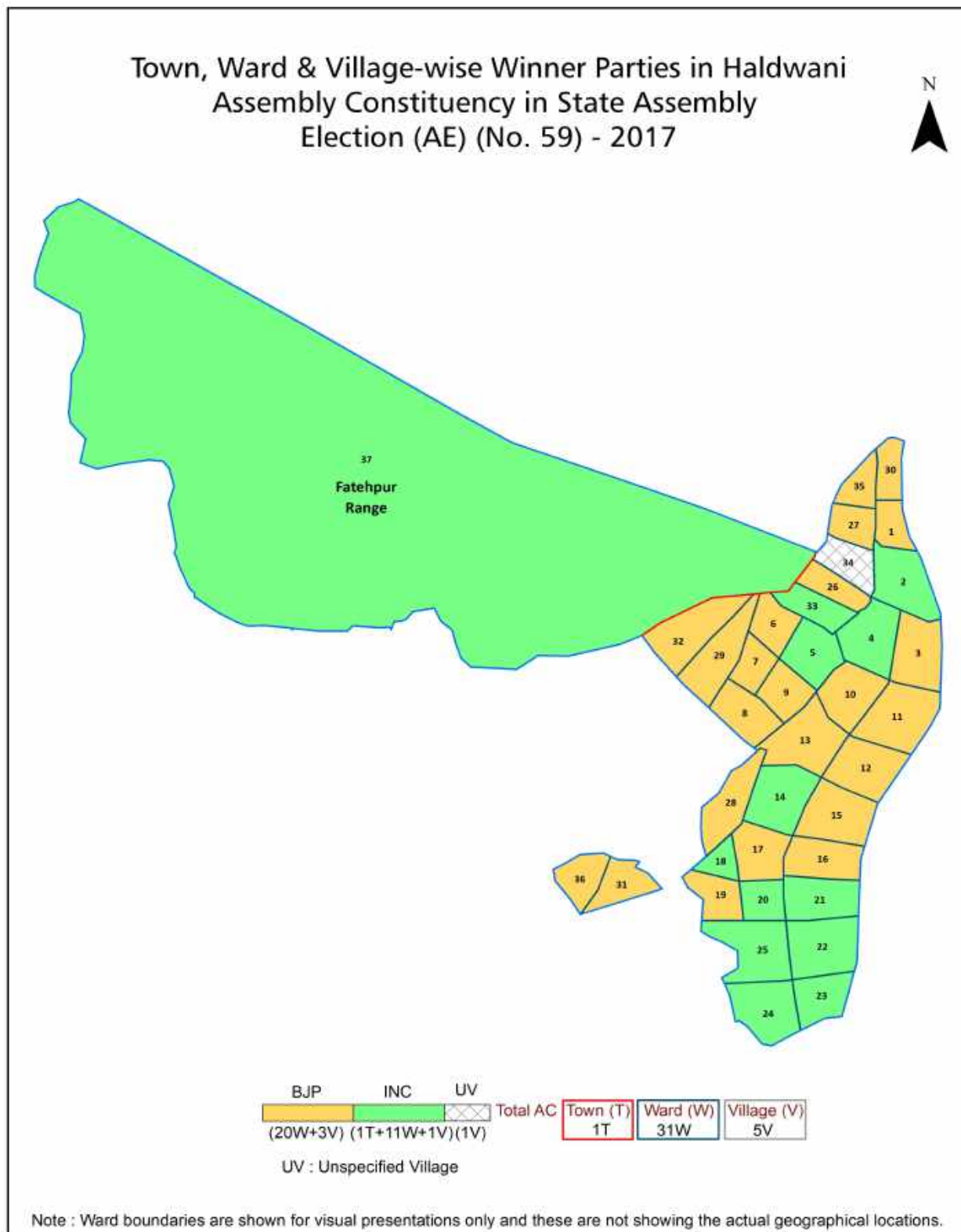
All rights reserved. No part of this book may be reproduced, stored in a retrieval system or transmitted in any form or by any means, mechanical photocopying, photographing, scanning, recording or otherwise without the prior written permission of the publisher. Please refer to Disclaimer at page no. 162 for the use of this publication.

Printed in India

Contents

No.	Particulars	Page No.
	Introduction	
1	Assembly Constituency - (Vidhan Sabha) at a Glance Features of Assembly as per Delimitation Commission of India (2008)	1-2
	Location and Political Maps	
2	Location Map Boundaries of Assembly Constituency - (Vidhan Sabha) in District Boundaries of Assembly Constituency under Parliamentary Constituency - (Lok Sabha) Town, Ward & Village-wise Winner Parties- 2024, 2022, 2019, 2017, 2014, 2012 and 2009	3-11
	Administrative Setup (2011)	
3	District Sub-district Towns Villages Inhabited Villages Uninhabited Villages Village Panchayat Intermediate Panchayat	12-14
	Demographics (2011)	
4	Population Households Rural/Urban Population Towns, Ward and Villages by Population Size Sex Ratio (Total & 0-6 Years) Religious Population Social Population Literacy Rate	15-17
	Electoral Features	
5	Important Dates of Last Elections Held Electors by Gender Service Electors Voters Voters Turnout Polling Stations & Average Number of Electors per Polling Station Electors by Age Group Present Elected Representatives	18-23
	Historical Summary Election Results	
6	Vote Share of Major Parties Winning Margin (Number & Percentage) Polarity of Parties Summary Result of Assembly Segment of Parliamentary Election 2024, 2019, 2014, 2009, 2004 and 1999 Summary Result of Assembly Elections 2022, 2017, 2012, 2007 and 2002	24-36
	Polling Station Level Election Results	
7	Name and Number of Polling Station 2024, 2022, 2019, 2017, 2014, 2012 and 2009 Polling Station-wise Electors, Voters & Voters Turnout 2024, 2022, 2019, 2017, 2014, 2012 and 2009 Polling Station wise Elections Results 2024, 2022, 2019, 2017, 2014, 2012 and 2009	37-139
8	Panchayat and Local Bodies Election Results Panchayat Result 2014 Urban Local Bodies Result 2013	140-142
	Share of Assembly Constituency	
9	Share of Assembly Constituency - (Vidhan Sabha) in State, District and Parliamentary Constituency - (Lok Sabha)	143
	Socio-Economic Amenities (2011)	
10	Access to Administrative Units Agricultural, Manufacturing and Industrial Commodities Demographic Indicators Education Health & Manpower Drinking Water Supply Sanitation Entertainment and Recreations Infrastructure Power Food Allocation Distribution and Marketing of Agriculture Commodities Infrastructure Transport and Road Infrastructure Communication Banking and Financial Services Land Use Irrigation Source	144-159
11	Abbreviation & Sources	160-161
12	Disclaimer	162

Location & Political Map



Administrative Setup

List of Village Panchayat & Intermediate Panchayat (Block) Name - 2011

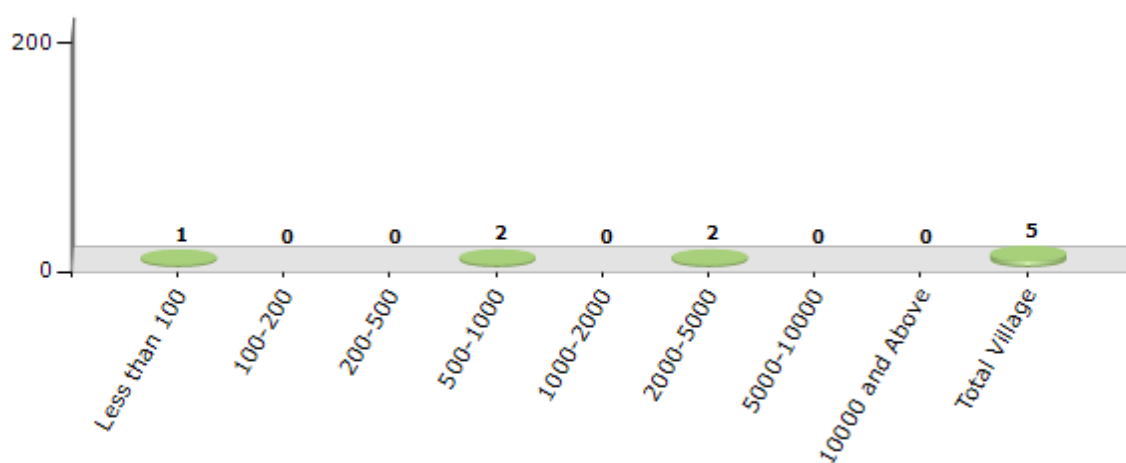
Village Name	Village Panchayat Name	Intermediate Panchayat Name
Bamori Malli	Bamori Malli	Haldwani
Bamori Tallikham	Bamori Tallikham	Haldwani
Damua Dhunga Kham	Damua Dhunga Kham	Haldwani
Harigarh Dalipsingh	Harigarh Dalipsingh	Haldwani
Korta	Damua Dhunga	Haldwani

Demographics

Number of Villages by Population Size - 2011

Less than 100	100-200	200-500	500-1000	1000-2000	2000-5000	5000-10000	10000 and Above	Total Village
1	0	0	2	0	2	0	0	5

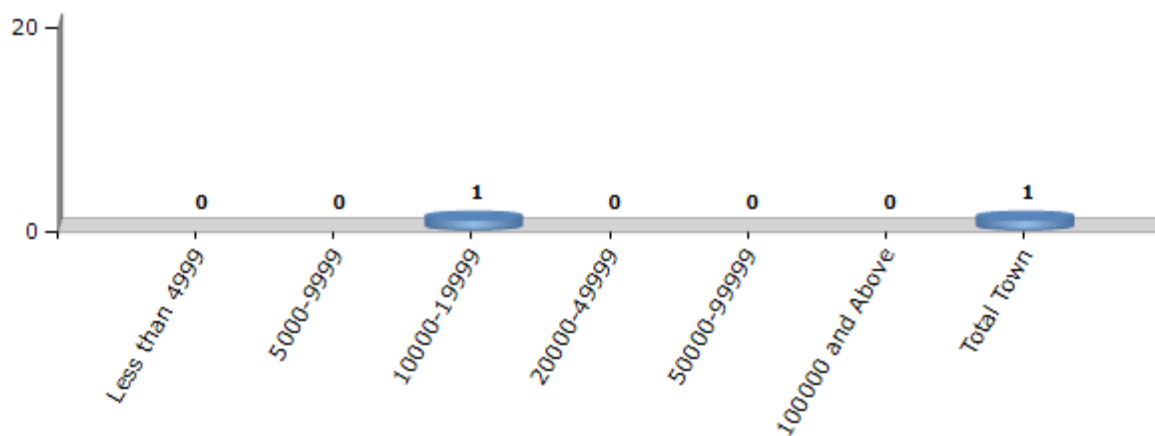
Number of Villages by Population Size - 2011



Number of Towns by Population Size - 2011

Less than 4999	5000-9999	10000-19999	20000-49999	50000-99999	100000 and Above	Total Town
0	0	1	0	0	0	1

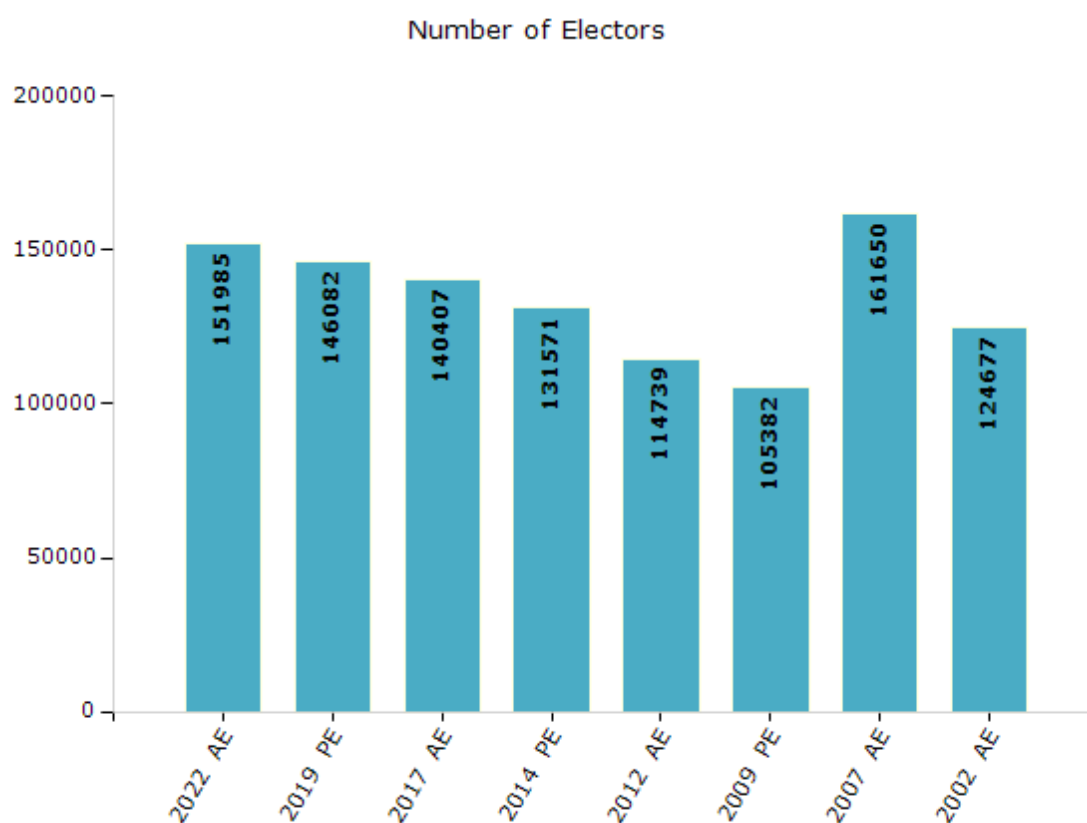
Number of Towns by Population Size - 2011



Electoral Features

Electors by Male & Female

Year	Male	Female	Others	Total	Year	Male	Female	Others	Total
2022 AE	79571	72414	0	151985	2009 PE	56010	49372	-	105382
2019 PE	77241	68841	0	146082	2007 AE	84311	77339	-	161650
2017 AE	74739	65668	0	140407	2004 PE	-	-	-	-
2014 PE	70606	60965	0	131571	2002 AE	67946	56731	-	124677
2012 AE	61348	53391	0	114739					

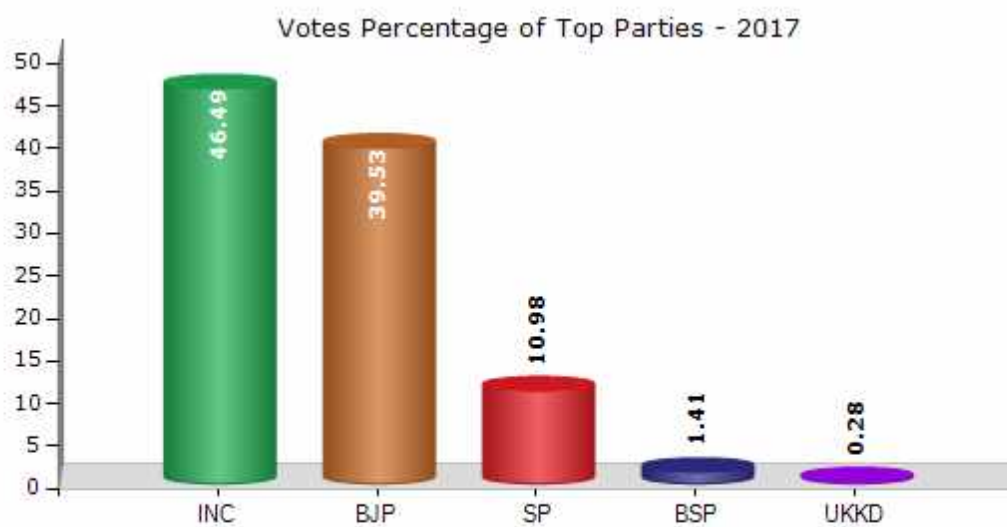


Note : AE : Assembly Election, PE : Assembly Segment of Parliamentary Election

Historical Summary Election Results

Summary Result of Assembly Election - 2017

Candidate Name	Party	Votes	Votes %
Indira Hridayesh	INC	43786	46.49
Jogendra Pal Singh Rautela	BJP	37229	39.53
Shoeb Ahmed	SP	10337	10.98
Shakeel Ahmad	BSP	1324	1.41
Bhuwan Chandra Joshi	UKKD	268	0.28
Lalit Mohan Joshi	SHS	226	0.24
Vinod Kumar Sharma	IND	201	0.21
Tofik Ahmad	IND	156	0.17
	NOTA	655	0.7



Polling Station Level Election Results

Number and Name of Polling Stations (PS) (2022)

Number of Polling Stations	Name of Polling Stations	Number of Polling Stations	Name of Polling Stations
1	Ranibag	22	Khalsha National Girls Intar Collage R.N. 2
2	Kathgodam R.N. 1	23	Vivekanand Pu.Ma.Vi. Haldwani R.N. 3
3	Rainbasera Kathgodam	24	Vivekanand Pu.Ma.Vi. Haldwani R.N. 5
4	Kathgodam R.N. 2	25	Vivekanand Pu.Ma.Vi. Haldwani R.N. 4
5	Kathgodam R.N. 3	26	Vivekanand Pu.Ma.Vi. Haldwani R.N. 6
6	Kathgodam R.N. 4	27	Subhashnagar Haldwani R.N. 1
7	Kathgodam R.N. 5	28	Subhashnagar Haldwani R.N. 5
8	Kathgodam R.N. 6	29	Subhashnagar Haldwani R.N. 2
9	Tulsinagar Damuwadhunga R.N. 1	30	Subhashnagar Haldwani R.N. 3
10	Tulsinagar Damuwadhunga R.N. 3	31	Subhashnagar Haldwani R.N. 4
11	Tulsinagar Damuwadhunga R.N. 2	32	Khalsha National Girls Intar Collage R.N. 3
12	Tulsinagar Damuwadhuga R.N. 1	33	M B Inter College Haldwani R.N. 1
13	Tulsi Nagar Damuwadhunga R.N. 4	34	M B Inter College Haldwani R.N. 2
14	Tulsinagar Damuwadhunga R.N. 2	35	Indira Priyadarshini Government Girls Post Graduate College Of Commerce, Haldwani R.N. 1
15	Tulsi Nagar Damuwadhunga R.N. 5	36	Indira Priyadarshini Government Girls Post Graduate College Of Commerce, Haldwani R.N. 2
16	Tulsinagar Damuwadhunga R.N. 3	37	Indira Priyadarshini Government Girls Post Graduate College Of Commerce, Haldwani R.N. 3
17	Haldwani R.N. 1	38	Indira Priyadarshini Government Girls Post Graduate College Of Commerce, Haldwani R.N. s
18	Haldwani R.N. 1	39	Indira Priyadarshini Government Girls Post Graduate College Of Commerce, Haldwani R.N. 4
19	Haldwani R.N. 2	40	Motiram Baburam Government Post Graduate College
20	Khalsha National Girls Intar Collage R.N. 1	41	Motiram Baburam Government Post Graduate College
21	Khalsha National Girls Intar Collage R.N. 5	42	Motiram Baburam Government Post Graduate College

Contd....

Polling Station Level Election Results

Polling Station-wise Votes Secured by Overall Top Five Parties in Haldwani Assembly in Assembly Election (AE) under Nainital-Udhamsingh Nagar Parliamentary Constituency in Uttarakhand (2022)

No. of Polling Station	Winner - Sumit Hridayesh (INC)	Runner-up - Dr. Jogender Pal Singh Rautela (BJP)	3rd - Shoeb Ahmed (SP)	4th - Samit Tikkoo (AAP)	5th - Abdul Mateen Siddiqui (AIMIM)	NOTA	Other	Total Votes Secured
36	112	283	0	16	0	8	1	420
37	143	352	0	25	0	2	3	525
38	115	259	0	6	0	3	5	388
39	168	438	0	16	0	6	8	636
40	100	355	0	17	0	2	2	476
41	148	402	0	8	0	5	2	565
42	161	199	2	12	2	2	3	381
43	230	338	2	28	0	4	5	607
44	150	233	0	6	0	2	4	395
45	181	294	1	7	0	1	6	490
46	138	286	0	11	0	2	8	445
47	201	457	0	13	1	3	5	680
48	234	417	0	7	0	1	12	671
49	209	256	0	23	0	4	7	499
50	306	444	2	14	0	2	18	786
51	361	98	15	8	14	1	5	502
52	173	211	3	4	2	1	8	402
53	343	240	7	13	3	3	15	624
54	322	154	18	5	6	3	14	522
55	384	290	14	10	6	3	16	723
56	283	173	1	5	2	1	9	474
57	200	235	1	23	0	1	11	471
58	303	294	2	8	1	3	8	619
59	232	390	2	8	0	5	15	652
60	180	284	3	11	1	1	14	494
61	213	358	3	6	0	3	18	601
62	174	282	0	4	0	1	13	474
63	189	229	5	5	1	1	9	439
64	259	291	7	11	0	5	36	609
65	214	254	1	4	1	14	29	517
66	35	13	0	3	0	0	5	56
67	598	15	88	11	50	6	4	772
68	308	104	32	4	12	0	3	463
69	488	11	44	6	21	1	13	584
70	450	7	51	0	27	3	8	546

Contd....

Polling Station Level Election Results

Winner, Runner-up and 3rd Party Position & Winning Margin According to Polling Stations in Haldwani Assembly in Assembly Election (AE) under Nainital-Udhamsingh Nagar Parliamentary Constituency in Uttarakhand (2022)

Polling Station Number	Winner Party	Winner Votes (%)	Runner-up Party	Runner-up Votes (%)	Winning Margin Votes (%)	Third Party	Third Party Votes (%)	Other Votes (%)
71	BJP	332 (60.04)	INC	196 (35.44)	136 (24.6)	AAP	10 (1.81)	15 (2.71)
72	INC	394 (65.02)	BJP	79 (13.04)	315 (51.98)	SP	74 (12.21)	59 (9.74)
73	INC	492 (75.93)	SP	109 (16.82)	383 (59.11)	BJP	14 (2.16)	33 (5.09)
74	INC	415 (73.32)	SP	95 (16.78)	320 (56.54)	BJP	31 (5.48)	25 (4.42)
75	BJP	332 (62.52)	INC	182 (34.27)	150 (28.25)	AAP	11 (2.07)	6 (1.13)
76	BJP	200 (62.7)	INC	96 (30.09)	104 (32.61)	AAP	14 (4.39)	9 (2.82)
77	BJP	595 (72.74)	INC	198 (24.21)	397 (48.53)	AAP	8 (0.98)	17 (2.08)
78	BJP	398 (65.89)	INC	187 (30.96)	211 (34.93)	AAP	5 (0.83)	14 (2.32)
79	BJP	522 (66.41)	INC	232 (29.52)	290 (36.89)	AAP	21 (2.67)	11 (1.4)
80	BJP	217 (65.96)	INC	91 (27.66)	126 (38.3)	AAP	18 (5.47)	3 (0.91)
81	BJP	232 (69.46)	INC	84 (25.15)	148 (44.31)	AAP	8 (2.4)	10 (2.99)
82	BJP	193 (46.17)	INC	191 (45.69)	2 (0.48)	AAP	20 (4.78)	14 (3.35)
83	BJP	372 (56.36)	INC	252 (38.18)	120 (18.18)	AAP	13 (1.97)	23 (3.48)
84	BJP	317 (71.08)	INC	107 (23.99)	210 (47.09)	AAP	11 (2.47)	11 (2.47)
85	BJP	215 (60.91)	INC	123 (34.84)	92 (26.07)	AAP	9 (2.55)	6 (1.7)
86	INC	273 (65.63)	BJP	108 (25.96)	165 (39.67)	SP	30 (7.21)	5 (1.2)
87	INC	313 (60.66)	BJP	138 (26.74)	175 (33.92)	SP	31 (6.01)	34 (6.59)
88	INC	471 (64.7)	BJP	197 (27.06)	274 (37.64)	SP	17 (2.34)	43 (5.91)
89	INC	681 (91.9)	SP	22 (2.97)	659 (88.93)	BJP	9 (1.21)	29 (3.91)
90	INC	379 (67.56)	BJP	149 (26.56)	230 (41)	SP	15 (2.67)	18 (3.21)
91	INC	371 (63.31)	BJP	192 (32.76)	179 (30.55)	SP	9 (1.54)	14 (2.39)
92	INC	274 (67.32)	BJP	115 (28.26)	159 (39.06)	AIMIM	7 (1.72)	11 (2.7)
93	BJP	300 (69.77)	INC	122 (28.37)	178 (41.4)	AAP	6 (1.4)	2 (0.47)
94	BJP	293 (62.61)	INC	146 (31.2)	147 (31.41)	AAP	9 (1.92)	20 (4.27)
95	BJP	288 (62.07)	INC	161 (34.7)	127 (27.37)	AAP	7 (1.51)	8 (1.72)
96	BJP	389 (76.73)	INC	103 (20.32)	286 (56.41)	AAP	4 (0.79)	11 (2.17)
97	BJP	305 (71.26)	INC	114 (26.64)	191 (44.62)	AAP	3 (0.7)	6 (1.4)
98	BJP	473 (69.15)	INC	192 (28.07)	281 (41.08)	AAP	10 (1.46)	9 (1.32)
99	BJP	224 (67.67)	INC	95 (28.7)	129 (38.97)	AAP	8 (2.42)	4 (1.21)
100	BJP	293 (59.19)	INC	175 (35.35)	118 (23.84)	AAP	18 (3.64)	9 (1.82)
101	BJP	363 (71.88)	INC	117 (23.17)	246 (48.71)	AAP	17 (3.37)	8 (1.58)
102	BJP	382 (61.51)	INC	116 (18.68)	266 (42.83)	BSP	112 (18.04)	11 (1.77)
103	INC	357 (47.04)	BJP	357 (47.04)	0 (0)	SP	19 (2.5)	26 (3.43)
104	INC	200 (51.55)	BJP	178 (45.88)	22 (5.67)	AAP	4 (1.03)	6 (1.55)
105	INC	171 (54.46)	BJP	115 (36.62)	56 (17.84)	BSP	8 (2.55)	20 (6.37)

Contd....

Socio-Economic Amenities - Rural

Access to Education Facilities

Particulars	Number of Villages (% of Population)				
	Available	Not Available	If Not Available (Distance of Nearest Facility)		
			A	B	C
Govt. Primary School	1 (52)	4 (48)	2 (17)	0 (0)	0 (0)
Private Primary School	2 (31)	3 (69)	0 (0)	0 (0)	0 (0)
Govt. Middle School	2 (82)	3 (18)	2 (17)	0 (0)	0 (0)
Private Middle School	3 (83)	2 (17)	0 (0)	0 (0)	0 (0)
Govt. Secondary School	1 (30)	4 (70)	2 (17)	0 (0)	0 (0)
Private Secondary School	3 (83)	2 (17)	0 (0)	0 (0)	0 (0)
Govt. Senior Secondary School	1 (30)	4 (70)	3 (18)	0 (0)	0 (0)
Private Senior Secondary School	2 (82)	3 (18)	0 (0)	0 (0)	0 (0)
Govt. Arts and Science Degree College	0 (0)	5 (100)	3 (90)	2 (10)	0 (0)
Private Arts and Science Degree College	0 (0)	5 (100)	0 (0)	0 (0)	0 (0)
Govt. Engineering College	0 (0)	5 (100)	0 (0)	0 (0)	0 (0)
Private Engineering College	0 (0)	5 (100)	3 (90)	2 (10)	0 (0)
Govt. Medicine College	0 (0)	5 (100)	3 (90)	2 (10)	0 (0)
Private Medicine College	0 (0)	5 (100)	0 (0)	0 (0)	0 (0)
Govt. Management Institute	0 (0)	5 (100)	0 (0)	0 (0)	0 (0)
Private Management Institute	0 (0)	5 (100)	3 (90)	2 (10)	0 (0)
Govt. Polytechnic	0 (0)	5 (100)	3 (90)	2 (10)	0 (0)
Private Polytechnic	0 (0)	5 (100)	0 (0)	0 (0)	0 (0)
Govt. Vocational Training School/ITI	0 (0)	5 (100)	3 (90)	2 (10)	0 (0)
Private Vocational Training School/ITI	0 (0)	5 (100)	0 (0)	0 (0)	0 (0)
Govt. Non Formal Training Centre	0 (0)	5 (100)	0 (0)	0 (0)	0 (0)
Private Non Formal Training Centre	0 (0)	5 (100)	3 (90)	2 (10)	0 (0)
Govt. School For Disabled	0 (0)	5 (100)	0 (0)	0 (0)	0 (0)
Private School For Disabled	0 (0)	5 (100)	3 (90)	2 (10)	0 (0)
Government Others	0 (0)	5 (100)	3 (90)	2 (10)	0 (0)
Private Others	0 (0)	5 (100)	0 (0)	0 (0)	0 (0)

Note : Distance A : Less than 5 km; B : Between 5-10 km; C : 10+ km.; Source : Data Analysis is based on 2011 Census.

DISCLAIMER

The Terms of Use and Disclaimer of Datanet India Private Limited (hereinafter referred to as "Datanet") for use of this analysis report of **Haldwani Assembly Constituency (Haldwani Vidhan Sabha)** :-

1. **Assembly Factbook™** is a Registered Trade Mark owned by Datanet.
2. All the maps are sketched and graphical representation only and have not been drawn to the scale and also not to represent the actual geographical area or boundary of the unit.
3. The data for the aforesaid analysis is based on authentic sources and has been culled from the various publications of Census, CSO and NSSO for district and block level data, various central and state government departments, Central & State Elections Commissions and the concerned Returning Officers' releases, Electoral Rolls, Election results and allied publications, internal assessment, surveys, estimates and analysis. Therefore, certain adjustment of data at micro level may have been done to arrive closer to the macro data.
4. Data have been provided on an "As Is" and "As AVAILABLE" basis
5. The colours shown in the maps or diagram and charts of a particular party, alliance or AC are indicative and do not represent them.
6. This publication which includes maps, sheets, graphs and data would be the property under copyright of Datanet only. The user may use these for its internal study, analysis and research purposes. It's public display, re-selling or any commercial uses by the user are not allowed.
7. Datanet has taken due care and caution in compilation and processing of data and allied information, but does not guarantee the accuracy, adequacy or completeness of any information/analysis and will be not responsible for any errors or omissions or for the results obtained from the use of such information/analysis.
8. All the contents for the publication have been culled from various authentic sources and Datanet reasonably believes such sources to be reliable, but does not make any representations, express or implied as to the accuracy or fitness of use of such information. The information or contents of the information/analysis do not constitute advice and should not be relied upon in making (or refraining from making) any decision. Any reliance placed upon the information provided by Datanet is the sole responsibility and strictly at the user's risk.
9. In no event will Datanet be liable for any damages (including, without limitation, damages for loss of business projects, or loss of profits) arising in contract, tort or otherwise from the use of or inability to use any of its contents, or from any action taken (or refrained from being taken) as a result of using the analysis or any of its contents. Datanet its directors, owners, editors, officials, employees, distributor and agents or any associate will not be liable for any errors in the information contained or any consequences arising from the use of the contents of the provided information/analysis.
10. If any provision of these terms and conditions is held invalid or illegal or unenforceable for any reason by any court of competent jurisdiction, such provision shall be severed and the remainder of provisions of the terms and conditions shall continue in full force and effect as if the Term of Use had been executed with the invalid, illegal or unenforceable provision eliminated.
11. If there are any discrepancies in the information provided, please bring it to attention of Datanet for suitable rectification measures.

**Buy Online This Complete Book At
Datanet India eBooks Store**

www.indiastatpublications.com

or go directly at

**[http://www.indiastatpublications.com/
Assembly_factbook/Uttarakhand/Nainital-udhamsingh_Nagar/
Haldwani](http://www.indiastatpublications.com/Assembly_factbook/Uttarakhand/Nainital-udhamsingh_Nagar/Haldwani)**

  **indiastat**elections

ISBN : 978-93-5822-598-3



9 789358 225983