



Uttarakhand

Assembly Factbook™

Lalkuwa Assembly Constituency



Key Electoral Data of Lalkuwa
Assembly Constituency (Vidhan Sabha)

Uttarakhand

Assembly Factbook™

Lalkuwa Assembly Constituency



Lalkuwa Vidhan Sabha

Editor & Director

Dr. R.K. Thukral

Research Editor

Dr. Shafeeq Rahman

**Compiled, Researched and Published by
Datanet India Pvt. Ltd.**

D-100, 1st Floor,

Okhla Industrial Area, Phase-I,

New Delhi- 110020.

Ph.: 91-11- 43580781-84

Email : support@indiastatpublications.com

Website : www.indiastatelections.com

Online Book Store :

www.indiastatpublications.com

Report No. : AFB/UK-056-0125

ISBN : 978-93-5822-552-5

First Edition : January, 2018

Eighth Updated Edition : January, 2025

Price : Rs.11500/-

US\$ 310

© Datanet India Pvt. Ltd.

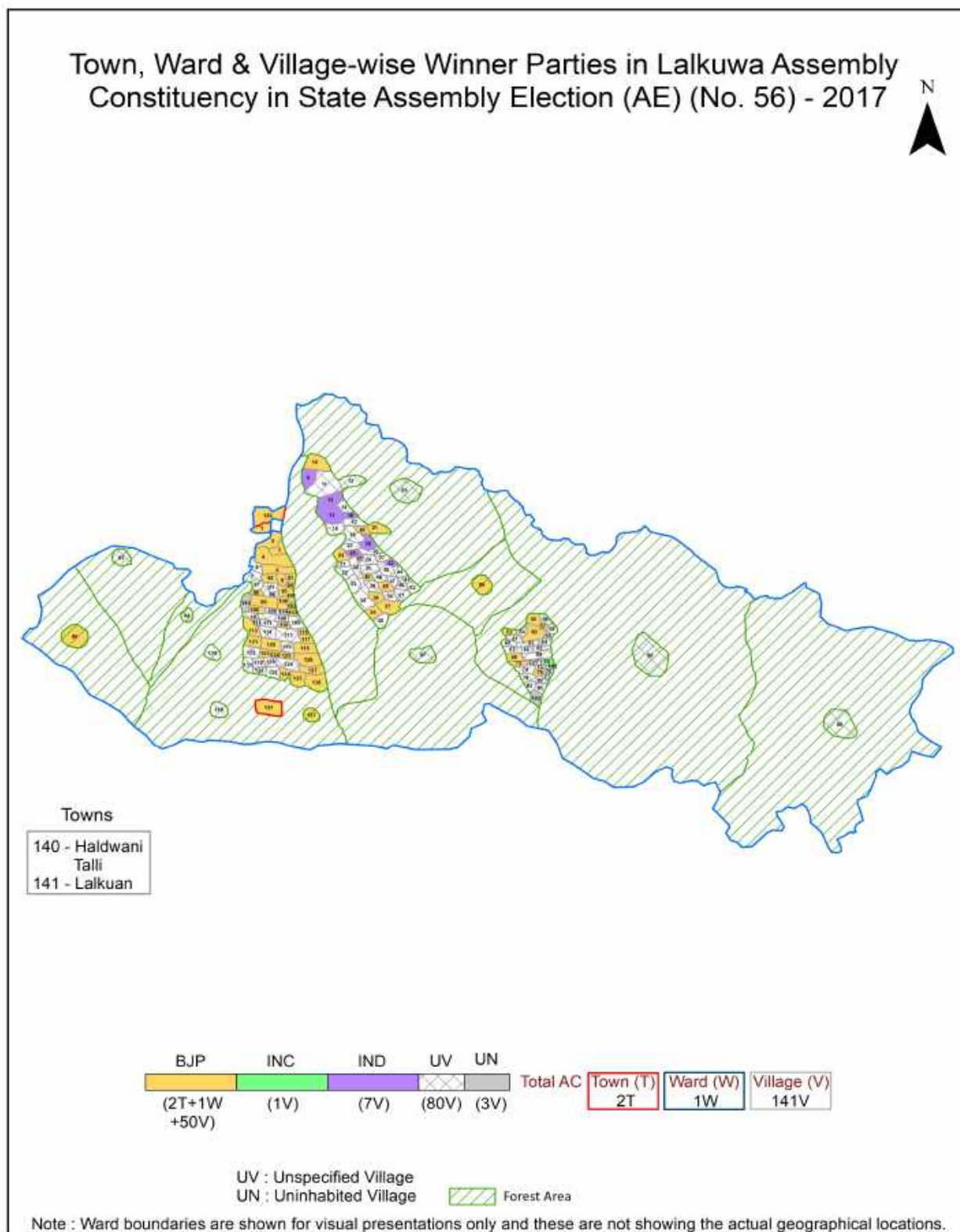
All rights reserved. No part of this book may be reproduced, stored in a retrieval system or transmitted in any form or by any means, mechanical photocopying, photographing, scanning, recording or otherwise without the prior written permission of the publisher. Please refer to Disclaimer at page no. 148 for the use of this publication.

Printed in India

Contents

No.	Particulars	Page No.
	Introduction	
1	Assembly Constituency - (Vidhan Sabha) at a Glance Features of Assembly as per Delimitation Commission of India (2008)	1-2
	Location and Political Maps	
2	Location Map Boundaries of Assembly Constituency - (Vidhan Sabha) in District Boundaries of Assembly Constituency under Parliamentary Constituency - (Lok Sabha) Town, Ward & Village-wise Winner Parties-2024, 2022, 2019, 2017, 2014, 2012 and 2009	3-11
	Administrative Setup (2011)	
3	District Sub-district Towns Villages Inhabited Villages Uninhabited Villages Village Panchayat Intermediate Panchayat	12-20
	Demographics (2011)	
4	Population Households Rural/Urban Population Towns, Ward and Villages by Population Size Sex Ratio (Total & 0-6 Years) Religious Population Social Population Literacy Rate	21-23
	Electoral Features	
5	Important Dates of Last Elections Held Electors by Gender Service Electors Voters Voters Turnout Polling Stations & Average Number of Electors per Polling Station Electors by Age Group Present Elected Representatives	24-29
	Historical Summary Election Results	
6	Vote Share of Major Parties Winning Margin (Number & Percentage) Polarity of Parties Summary Result of Assembly Segment of Parliamentary Election 2024, 2019, 2014, 2009 and 2009 Summary Result of Assembly Elections 2022, 2017 and 2012	30-39
	Polling Station Level Election Results	
7	Name and Number of Polling Station 2024, 2022, 2019, 2017, 2014, 2012 and 2009 Polling Station-wise Electors, Voters & Voters Turnout 2024, 2022, 2019, 2017, 2014, 2012 and 2009 Polling Station wise Elections Results 2024, 2022, 2019, 2017, 2014, 2012 and 2009	40-125
8	Panchayat and Local Bodies Election Results Panchayat Result 2014 Urban Local Bodies Result 2013	126-128
	Share of Assembly Constituency	
9	Share of Assembly Constituency - (Vidhan Sabha) in State, District and Parliamentary Constituency - (Lok Sabha)	129
	Socio-Economic Amenities (2011)	
10	Access to Administrative Units Agricultural, Manufacturing and Industrial Commodities Demographic Indicators Education Health & Manpower Drinking Water Supply Sanitation Entertainment and Recreations Infrastructure Power Food Allocation Distribution and Marketing of Agriculture Commodities Infrastructure Transport and Road Infrastructure Communication Banking and Financial Services Land Use Irrigation Source	130-145
11	Abbreviation & Sources	146-147
12	Disclaimer	148

Location & Political Map



Administrative Setup

List of Village Panchayat & Intermediate Panchayat (Block) Name - 2011

Village Name	Village Panchayat Name	Intermediate Panchayat Name
Arjunpur	Haripur Purnanand	Haldwani
Bachi Newar	Gangapur Kabdwal	Haldwani
Bachipur	Jaipur Bisa	Haldwani
Bakulia	Kishanpur Sarkuliya	Haldwani
Bameta Bangar Kheema	Bameta Bangar Kheema	Haldwani
Bametabangar Keshavdatt	Bameta Bangar Kheema	Haldwani
Banskhera Iswaridatt	Jagatpur	Haldwani
Basantpur	Basantpur	Haldwani
Bechpur Pargai	Katan Nayagaon	Haldwani
Bhagwanpur Durgadatt	Jaipur Bisa	Haldwani
Bhagwatpur	Sunderpur Rekhwai	Haldwani
Bhakra Range	-	Forest CD Block Nainital
Bhawan Singh Nawar	Kharakpur	Haldwani
Bhawanipur	Katan Nayagaon	Haldwani
Bhawanipur Harisingh	Kharakpur	Haldwani
Bhawanipur Kishana	Kharakpur	Haldwani
Chhakhata Range (P-2)	-	Forest CD Block Nainital
Chorgalia Kotaliya	Chorgaliya Amkhera	Haldwani
Chorgalia Talla Amkhera	Chorgalia Talla	Haldwani
Daulabadpur	Chorgaliya Amkhera	Haldwani
Daulatpur	Sundarpur	Haldwani
Dauli Range	-	Forest CD Block Nainital
Deopur Danai	Katan Khanwal	Haldwani
Devpur Pokhriya	Sundarpur Rekwal	Haldwani
Devpur Sanwal	Chorgaliya Amkhera	Haldwani
Dewala Malla	Dewala Malla	Haldwani
Dewala Talla	Dewala Talla	Haldwani
Dewalamalla Simlar	Dewala Malla	Haldwani
Dewla Talla Pajaya	Dewala Talla	Haldwani

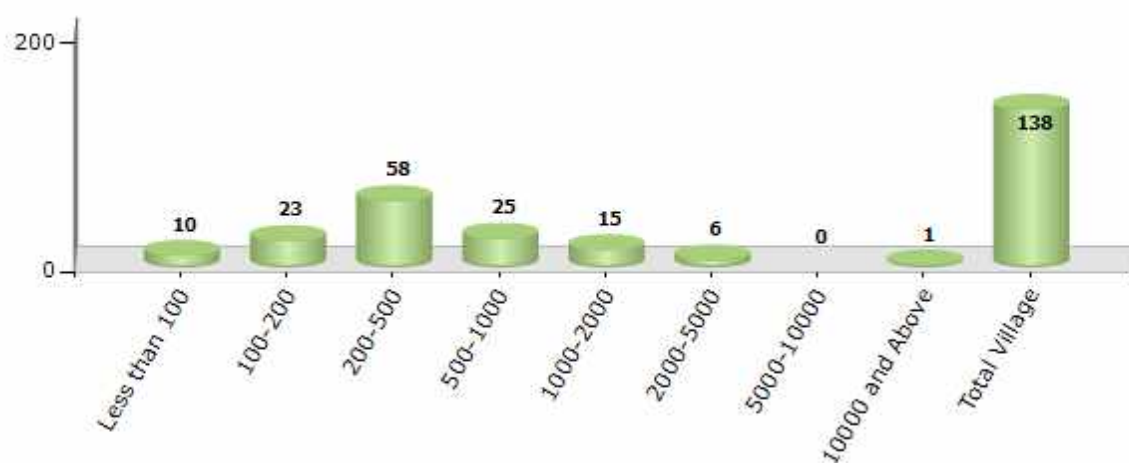
Contd....

Demographics

Number of Villages by Population Size - 2011

Less than 100	100-200	200-500	500-1000	1000-2000	2000-5000	5000-10000	10000 and Above	Total Village
10	23	58	25	15	6	0	1	138

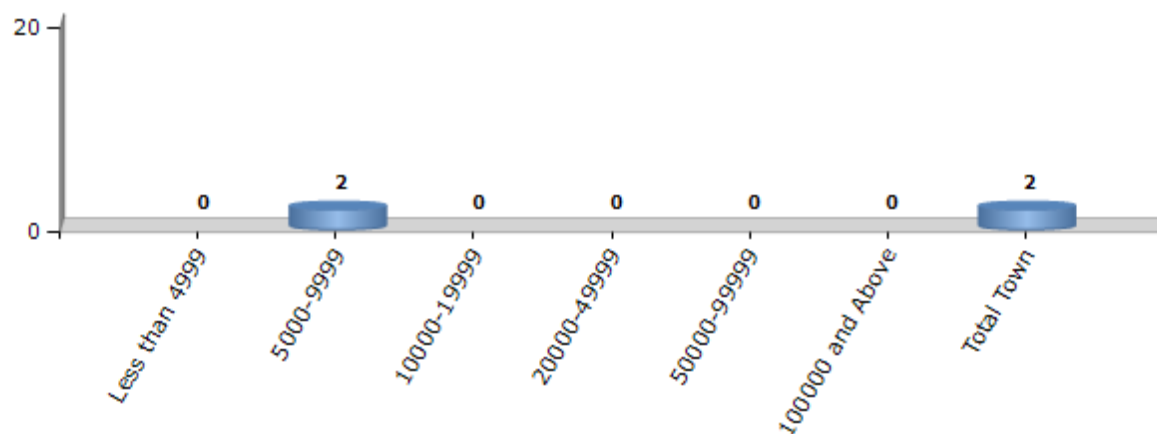
Number of Villages by Population Size - 2011



Number of Towns by Population Size - 2011

Less than 4999	5000-9999	10000-19999	20000-49999	50000-99999	100000 and Above	Total Town
0	2	0	0	0	0	2

Number of Towns by Population Size - 2011

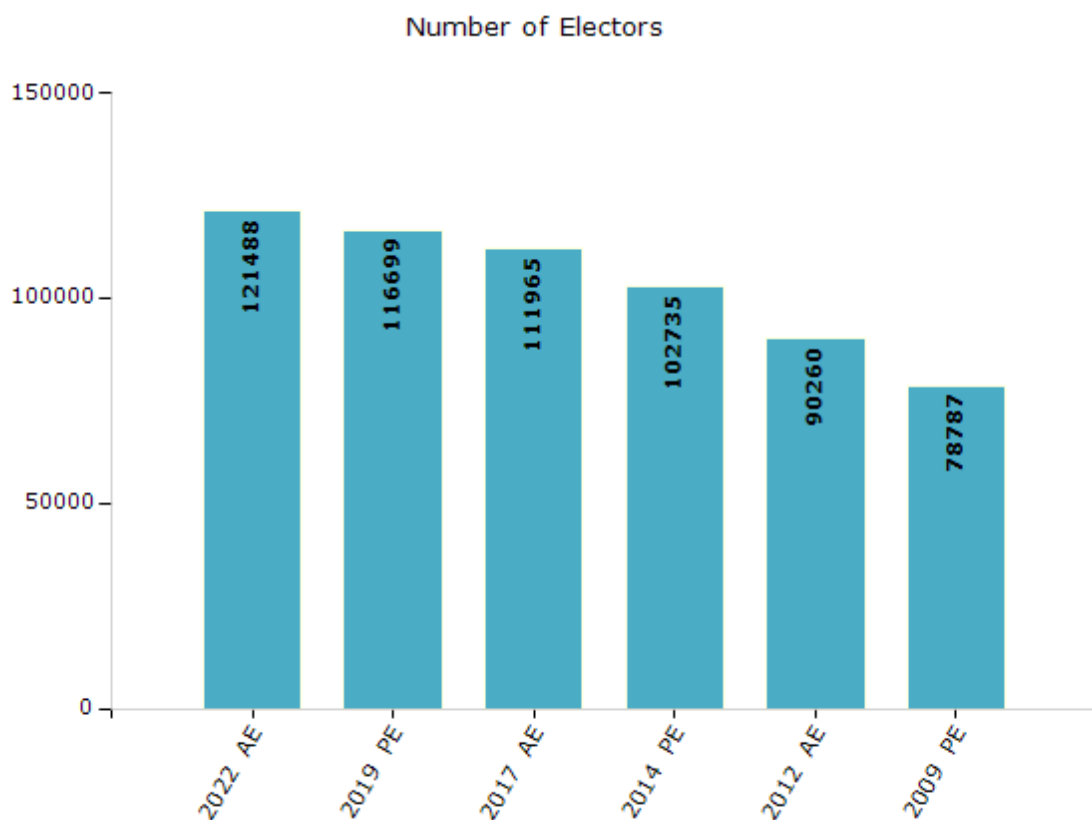


Electoral Features

Electors by Male & Female

Year	Male	Female	Others	Total
2022 AE	63909	57579	0	121488
2019 PE	61704	54995	0	116699
2017 AE	59371	52594	0	111965
2014 PE	54834	47901	0	102735
2012 AE	48317	41943	0	90260

Year	Male	Female	Others	Total
2009 PE	41624	37163	-	78787
2007 AE	-	-	-	-
2004 PE	-	-	-	-
2002 AE	-	-	-	-

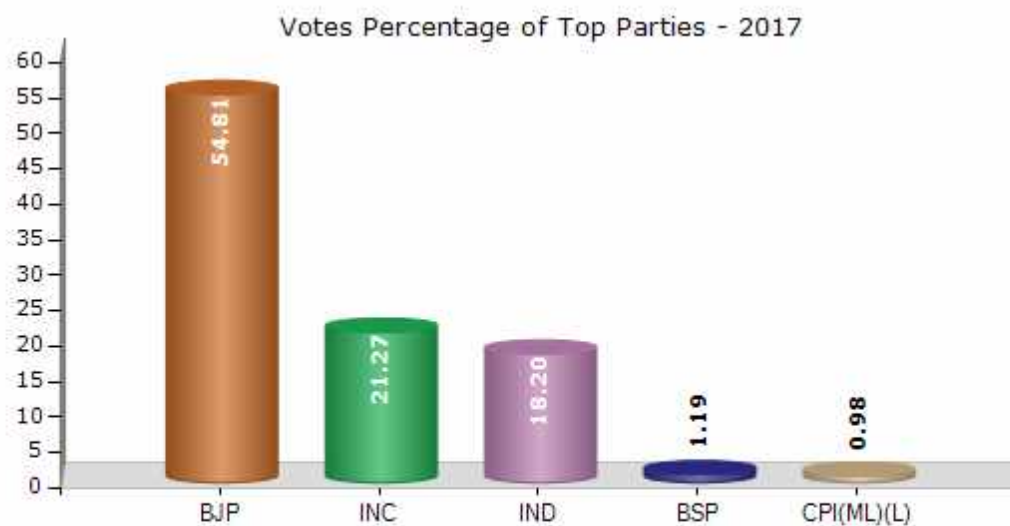


Note : AE : Assembly Election, PE : Assembly Segment of Parliamentary Election

Historical Summary Election Results

Summary Result of Assembly Election - 2017

Candidate Name	Party	Votes	Votes %
Naveen Chandra Dumka	BJP	44293	54.81
Harish Chandra Durgapal	INC	17185	21.27
Harendra Singh Bora	IND	14709	18.2
Rajeev Mohan	BSP	964	1.19
Purushottam Sharma	CPI(ML)(L)	793	0.98
Virendra Puri Maharaj	IND	592	0.73
Chandan Singh Rana	SHS	407	0.5
Vijay Joshi	IND	238	0.29
Deepa Bhatt	UKKD	224	0.28
Rajender Singh Bisht	IND	191	0.24
	NOTA	1216	1.5



Polling Station Level Election Results

Number and Name of Polling Stations (PS) (2022)

Number of Polling Stations	Name of Polling Stations	Number of Polling Stations	Name of Polling Stations
1	Hathikhal R.N. 1	22	Beriparaw R.N. 2
2	Hathikhal R.N.3	23	Dungarpur
3	Hathikhal R.N. 2	24	Halduchour Parma
4	Hathikhal	25	Halduchour Deena R.N. 1
5	Motahald R.N.1	26	Halduchour Deena R.N. 2
6	Sufi Bhagwanpur isthit Fattabangar	27	Halduchour Deena R.N. 3
7	Himmatpur Choumwal	28	Halduchour Deena R.N. 2
8	Himmatpur chaumwal R.N. 2	29	Halduchour Deena R.N.1
9	Motahald	30	Halduchour R.N. 1
10	Bakuliya	31	Halduchour R.N. 2
11	Jaypur Kheema	32	Halduchour R.N. 3
12	Padampur dewaliya	33	Halduchour Deena
13	Indrapur Garwal	34	Lalkuan R.N. 1
14	Jaypur Beesa	35	Lalkuan
15	Gangapur Kbdal	36	Lalkuan R.N. 2
16	Dumkabangar Umapati	37	Lalkuan R.N. 3
17	Haripur Lachhi Bacchi	38	Lalkuan R.N. 4
18	Dungarpur	39	Railway Lalkuan R.N. 1
19	Durgapalpur Motiram	40	Railway Lalkuan R.N. 3
20	Himmatpur Choumwal	41	Lalkuan R.N. 1
21	Beriparaw R.N. 1	42	Lalkuan R.N. 2

Contd....

Polling Station Level Election Results

Polling Station-wise Votes Secured by Overall Top Five Parties in Lalkuwa Assembly in Assembly Election (AE) under Nainital-Udhamsingh Nagar Parliamentary Constituency in Uttarakhand (2022)

No. of Polling Station	Winner - Dr. Mohan Singh Bisht (BJP)	Runner-up - Harish Rawat (INC)	3rd - Sandhya Dalakoti (IND)	4th - Pawan Kumar Chauhan (IND)	5th - Kundan Singh Mehta (IND)	NOTA	Other	Total Votes Secured
36	199	260	1	170	2	1	17	650
37	251	207	6	103	2	4	18	591
38	311	256	4	36	0	0	6	613
39	216	100	2	102	1	1	8	430
40	199	199	4	144	0	2	26	574
41	295	216	15	120	5	9	56	716
42	201	258	3	85	0	1	13	561
43	118	286	2	46	1	1	11	465
44	191	69	3	65	2	1	9	340
45	246	138	11	106	0	2	31	534
46	209	89	1	88	3	3	31	424
47	240	230	5	88	0	4	30	597
48	331	131	10	77	1	2	19	571
49	126	502	6	60	1	2	19	716
50	142	413	2	85	0	1	15	658
51	304	51	2	39	0	1	6	403
52	240	91	4	46	0	3	6	390
53	361	307	20	5	5	5	28	731
54	258	253	7	3	5	5	13	544
55	364	308	33	21	11	8	30	775
56	NV	NV	NV	NV	NV	NV	NV	NV
57	411	390	19	6	3	10	42	881
58	346	353	12	1	7	4	13	736
59	293	453	14	1	8	7	25	801
60	379	364	29	12	39	5	51	879
61	399	197	8	3	9	7	14	637
62	373	208	21	4	14	7	48	675
63	251	401	9	15	21	2	54	753
64	432	230	10	25	2	5	31	735
65	362	190	9	41	2	6	27	637
66	259	128	2	87	3	6	22	507
67	274	96	3	56	1	2	13	445
68	314	188	18	1	5	5	15	546
69	358	142	12	2	7	7	13	541
70	462	304	11	13	9	7	55	861

Contd....

Polling Station Level Election Results

Winner, Runner-up and 3rd Party Position & Winning Margin According to Polling Stations in Lalkuwa Assembly in Assembly Election (AE) under Nainital-Udhamsingh Nagar Parliamentary Constituency in Uttarakhand (2022)

Polling Station Number	Winner Party	Winner Votes (%)	Runner-up Party	Runner-up Votes (%)	Winning Margin Votes (%)	Third Party	Third Party Votes (%)	Other Votes (%)
71	BJP	345 (50.07)	INC	220 (31.93)	125 (18.14)	IND (SD)	73 (10.6)	51 (7.4)
72	BJP	296 (52.48)	INC	196 (34.75)	100 (17.73)	IND (SD)	28 (4.96)	44 (7.8)
73	BJP	376 (62.88)	INC	126 (21.07)	250 (41.81)	IND (SD)	39 (6.52)	57 (9.53)
74	BJP	437 (54.76)	INC	265 (33.21)	172 (21.55)	IND (KSM)	28 (3.51)	68 (8.52)
75	BJP	375 (60.88)	INC	164 (26.62)	211 (34.26)	IND (SD)	21 (3.41)	56 (9.09)
76	BJP	364 (60.87)	INC	162 (27.09)	202 (33.78)	CPI(ML)(L)	16 (2.68)	56 (9.36)
77	BJP	372 (67.03)	INC	144 (25.95)	228 (41.08)	IND (SD)	15 (2.7)	24 (4.32)
78	BJP	294 (50)	INC	237 (40.31)	57 (9.69)	IND (KSM)	14 (2.38)	43 (7.31)
79	BJP	276 (52.87)	INC	181 (34.67)	95 (18.2)	IND (KSM)	20 (3.83)	45 (8.62)
80	INC	236 (41.99)	BJP	158 (28.11)	78 (13.88)	IND (YA)	103 (18.33)	65 (11.57)
81	INC	240 (44.44)	BJP	229 (42.41)	11 (2.03)	IND (KSM)	17 (3.15)	54 (10)
82	BJP	273 (49.64)	INC	198 (36)	75 (13.64)	IND (KSM)	46 (8.36)	33 (6)
83	INC	306 (41.3)	BJP	252 (34.01)	54 (7.29)	IND (KSM)	84 (11.34)	99 (13.36)
84	INC	282 (39.94)	BJP	260 (36.83)	22 (3.11)	IND (KSM)	55 (7.79)	109 (15.44)
85	BJP	325 (43.74)	INC	281 (37.82)	44 (5.92)	IND (SD)	48 (6.46)	89 (11.98)
86	INC	210 (39.85)	BJP	164 (31.12)	46 (8.73)	IND (KSM)	102 (19.35)	51 (9.68)
87	IND (KSM)	403 (69.24)	INC	83 (14.26)	320 (54.98)	BJP	69 (11.86)	27 (4.64)
88	BJP	230 (40.35)	INC	198 (34.74)	32 (5.61)	IND (KSM)	85 (14.91)	57 (10)
89	BJP	219 (37.69)	INC	155 (26.68)	64 (11.01)	IND (KSM)	153 (26.33)	54 (9.29)
90	INC	352 (42.21)	BJP	342 (41.01)	10 (1.2)	IND (KSM)	57 (6.83)	83 (9.95)
91	BJP	414 (50.55)	INC	297 (36.26)	117 (14.29)	IND (KSM)	43 (5.25)	65 (7.94)
92	BJP	461 (57.27)	INC	276 (34.29)	185 (22.98)	IND (SD)	33 (4.1)	35 (4.35)
93	BJP	365 (60.03)	INC	186 (30.59)	179 (29.44)	IND (SD)	21 (3.45)	36 (5.92)
94	BJP	289 (60.59)	INC	138 (28.93)	151 (31.66)	IND (SD)	28 (5.87)	22 (4.61)
95	BJP	412 (57.06)	INC	239 (33.1)	173 (23.96)	IND (SD)	32 (4.43)	39 (5.4)
96	BJP	275 (49.55)	INC	230 (41.44)	45 (8.11)	IND (SD)	18 (3.24)	32 (5.77)
97	BJP	402 (59.38)	INC	175 (25.85)	227 (33.53)	CPI(ML)(L)	30 (4.43)	70 (10.34)
98	INC	289 (50.97)	BJP	234 (41.27)	55 (9.7)	AAP	18 (3.17)	26 (4.59)
99	INC	329 (57.52)	BJP	183 (31.99)	146 (25.53)	IND (SD)	22 (3.85)	38 (6.64)
100	BJP	372 (53.45)	IND (SD)	161 (23.13)	211 (30.32)	INC	148 (21.26)	15 (2.16)
101	BJP	458 (54.59)	INC	232 (27.65)	226 (26.94)	IND (SD)	113 (13.47)	36 (4.29)
102	BJP	145 (47.54)	INC	104 (34.1)	41 (13.44)	IND (SD)	43 (14.1)	13 (4.26)
103	BJP	444 (57.66)	INC	216 (28.05)	228 (29.61)	IND (SD)	83 (10.78)	27 (3.51)
104	INC	340 (41.67)	BJP	264 (32.35)	76 (9.32)	IND (YA)	146 (17.89)	66 (8.09)
105	BJP	232 (34.52)	INC	231 (34.38)	1 (0.14)	IND (YA)	130 (19.35)	79 (11.76)

Contd....

Socio-Economic Amenities - Rural

Access to Education Facilities

Particulars	Number of Villages (% of Population)				
	Available	Not Available	If Not Available (Distance of Nearest Facility)		
			A	B	C
Govt. Primary School	56 (80)	82 (20)	68 (15)	1 (0)	1 (0)
Private Primary School	17 (52)	121 (48)	4 (1)	0 (0)	0 (0)
Govt. Middle School	23 (61)	115 (39)	95 (30)	1 (0)	1 (0)
Private Middle School	12 (47)	126 (53)	10 (4)	1 (1)	0 (0)
Govt. Secondary School	15 (56)	123 (44)	96 (32)	7 (4)	2 (0)
Private Secondary School	7 (2)	131 (98)	10 (5)	4 (2)	0 (0)
Govt. Senior Secondary School	10 (51)	128 (49)	104 (37)	11 (7)	3 (0)
Private Senior Secondary School	4 (2)	134 (98)	5 (3)	2 (1)	0 (0)
Govt. Arts and Science Degree College	0 (0)	138 (100)	1 (2)	33 (19)	104 (79)
Private Arts and Science Degree College	0 (0)	138 (100)	0 (0)	0 (0)	0 (0)
Govt. Engineering College	0 (0)	138 (100)	0 (0)	3 (44)	9 (3)
Private Engineering College	0 (0)	138 (100)	1 (2)	31 (18)	94 (34)
Govt. Medicine College	0 (0)	138 (100)	1 (2)	32 (19)	105 (80)
Private Medicine College	0 (0)	138 (100)	0 (0)	0 (0)	0 (0)
Govt. Management Institute	0 (0)	138 (100)	0 (0)	0 (0)	0 (0)
Private Management Institute	0 (0)	138 (100)	1 (2)	33 (19)	104 (79)
Govt. Polytechnic	0 (0)	138 (100)	1 (2)	33 (19)	104 (79)
Private Polytechnic	0 (0)	138 (100)	0 (0)	0 (0)	0 (0)
Govt. Vocational Training School/ITI	0 (0)	138 (100)	1 (2)	33 (19)	104 (79)
Private Vocational Training School/ITI	0 (0)	138 (100)	0 (0)	0 (0)	0 (0)
Govt. Non Formal Training Centre	6 (5)	132 (95)	0 (0)	14 (6)	29 (56)
Private Non Formal Training Centre	0 (0)	138 (100)	6 (4)	14 (9)	69 (19)
Govt. School For Disabled	0 (0)	138 (100)	0 (0)	0 (0)	0 (0)
Private School For Disabled	0 (0)	138 (100)	1 (2)	33 (19)	104 (79)
Government Others	0 (0)	138 (100)	1 (2)	14 (10)	74 (23)
Private Others	0 (0)	138 (100)	0 (0)	20 (10)	29 (56)

Note : Distance A : Less than 5 km; B : Between 5-10 km; C : 10+ km.; Source : Data Analysis is based on 2011 Census.

DISCLAIMER

The Terms of Use and Disclaimer of Datanet India Private Limited (hereinafter referred to as "Datanet") for use of this analysis report of **Lalkuwa Assembly Constituency (Lalkuwa Vidhan Sabha)** :-

1. **Assembly Factbook™** is a Registered Trade Mark owned by Datanet.
2. All the maps are sketched and graphical representation only and have not been drawn to the scale and also not to represent the actual geographical area or boundary of the unit.
3. The data for the aforesaid analysis is based on authentic sources and has been culled from the various publications of Census, CSO and NSSO for district and block level data, various central and state government departments, Central & State Elections Commissions and the concerned Returning Officers' releases, Electoral Rolls, Election results and allied publications, internal assessment, surveys, estimates and analysis. Therefore, certain adjustment of data at micro level may have been done to arrive closer to the macro data.
4. Data have been provided on an "As Is" and "As AVAILABLE" basis
5. The colours shown in the maps or diagram and charts of a particular party, alliance or AC are indicative and do not represent them.
6. This publication which includes maps, sheets, graphs and data would be the property under copyright of Datanet only. The user may use these for its internal study, analysis and research purposes. It's public display, re-selling or any commercial uses by the user are not allowed.
7. Datanet has taken due care and caution in compilation and processing of data and allied information, but does not guarantee the accuracy, adequacy or completeness of any information/analysis and will be not responsible for any errors or omissions or for the results obtained from the use of such information/analysis.
8. All the contents for the publication have been culled from various authentic sources and Datanet reasonably believes such sources to be reliable, but does not make any representations, express or implied as to the accuracy or fitness of use of such information. The information or contents of the information/analysis do not constitute advice and should not be relied upon in making (or refraining from making) any decision. Any reliance placed upon the information provided by Datanet is the sole responsibility and strictly at the user's risk.
9. In no event will Datanet be liable for any damages (including, without limitation, damages for loss of business projects, or loss of profits) arising in contract, tort or otherwise from the use of or inability to use any of its contents, or from any action taken (or refrained from being taken) as a result of using the analysis or any of its contents. Datanet its directors, owners, editors, officials, employees, distributor and agents or any associate will not be liable for any errors in the information contained or any consequences arising from the use of the contents of the provided information/analysis.
10. If any provision of these terms and conditions is held invalid or illegal or unenforceable for any reason by any court of competent jurisdiction, such provision shall be severed and the remainder of provisions of the terms and conditions shall continue in full force and effect as if the Term of Use had been executed with the invalid, illegal or unenforceable provision eliminated.
11. If there are any discrepancies in the information provided, please bring it to attention of Datanet for suitable rectification measures.

**Buy Online This Complete Book At
Datanet India eBooks Store**

www.indiastatpublications.com

or go directly at

**[http://www.indiastatpublications.com/
Assembly_factbook/Uttarakhand/Nainital-udhamsingh_Nagar/
Lalkuwa](http://www.indiastatpublications.com/Assembly_factbook/Uttarakhand/Nainital-udhamsingh_Nagar/Lalkuwa)**

 **indiastat**elections

ISBN : 978-93-5822-552-5



9 789358 225525