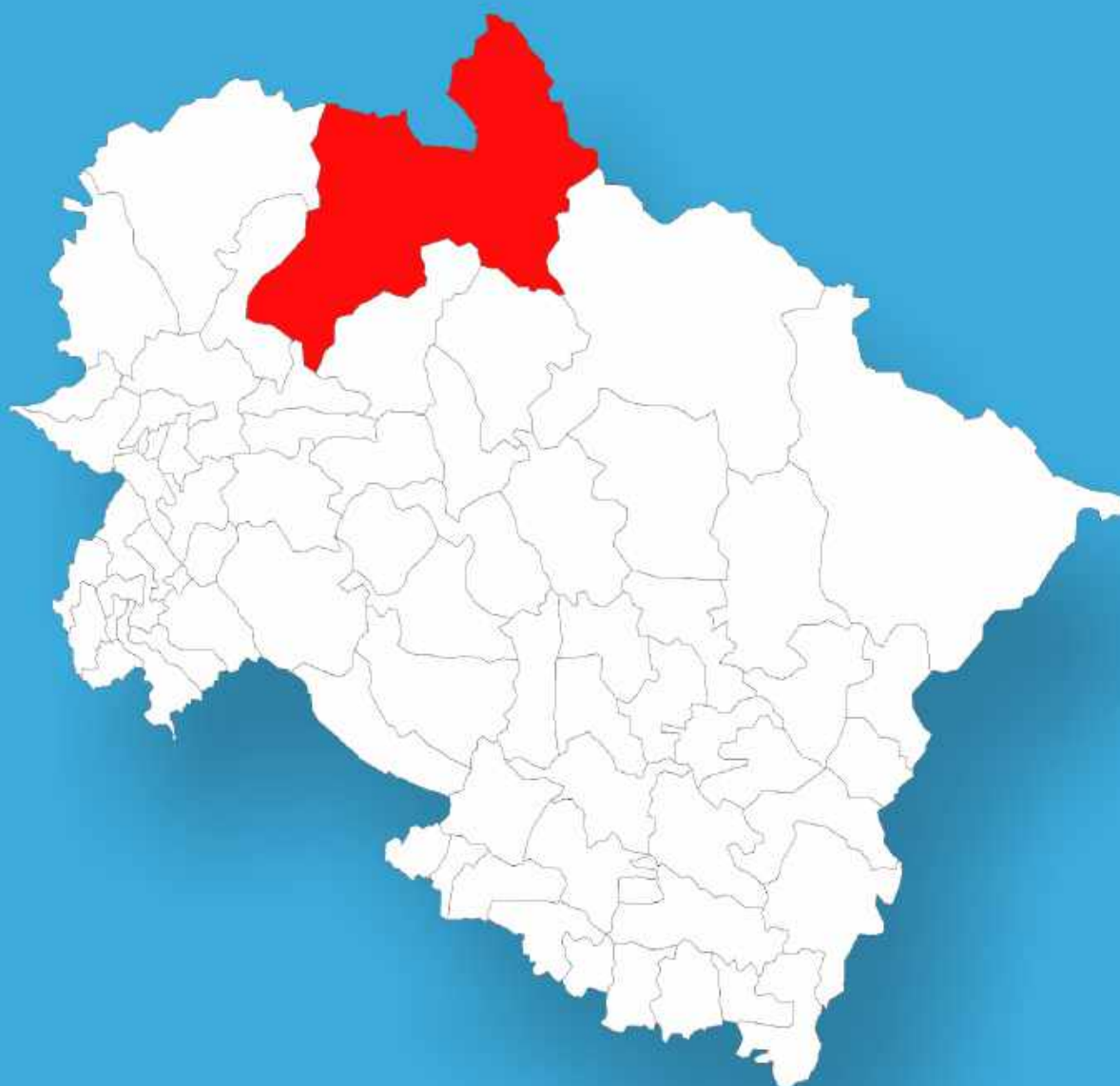




Uttarakhand

Assembly Factbook™

Gangotri Assembly Constituency



Key Electoral Data of Gangotri
Assembly Constituency (Vidhan Sabha)

Uttarakhand

Assembly Factbook™

Gangotri Assembly Constituency



Gangotri Vidhan Sabha

Editor & Director

Dr. R.K. Thukral

Research Editor

Dr. Shafeeq Rahman

**Compiled, Researched and Published by
Datanet India Pvt. Ltd.**

D-100, 1st Floor,

Okhla Industrial Area, Phase-I,

New Delhi- 110020.

Ph.: 91-11- 43580781-84

Email : support@indiastatpublications.com

Website : www.indiastatelections.com

Online Book Store :

www.indiastatpublications.com

Report No. : AFB/UK-003-0125

ISBN : 978-93-5822-604-1

First Edition : January, 2018

Eighth Updated Edition : January, 2025

Price : Rs.11500/-

US\$ 310

© Datanet India Pvt. Ltd.

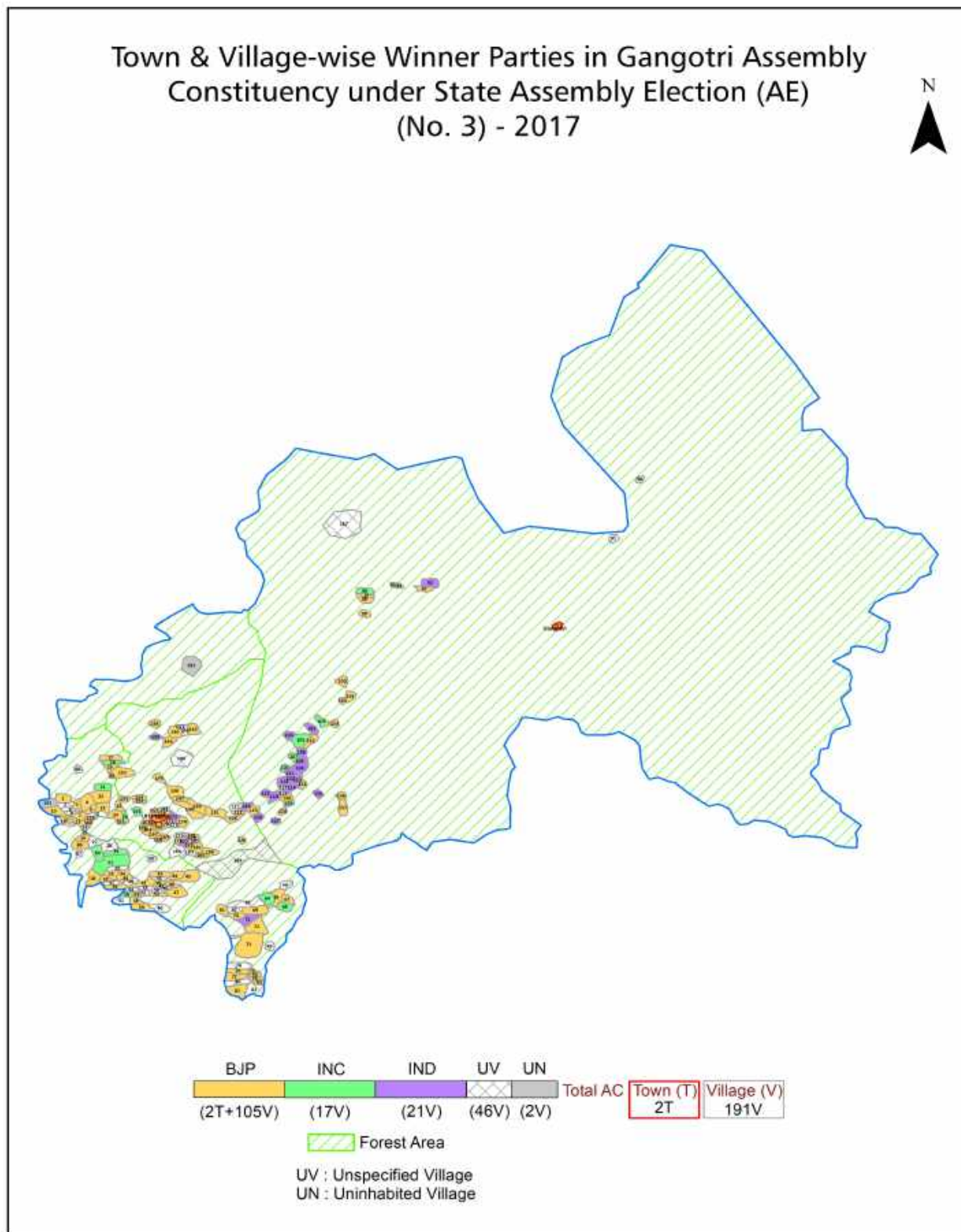
All rights reserved. No part of this book may be reproduced, stored in a retrieval system or transmitted in any form or by any means, mechanical photocopying, photographing, scanning, recording or otherwise without the prior written permission of the publisher. Please refer to Disclaimer at page no. 178 for the use of this publication.

Printed in India

Contents

No.	Particulars	Page No.
	Introduction	
1	Assembly Constituency - (Vidhan Sabha) at a Glance Features of Assembly as per Delimitation Commission of India (2008)	1-2
	Location and Political Maps	
2	Location Map Boundaries of Assembly Constituency - (Vidhan Sabha) in District Boundaries of Assembly Constituency under Parliamentary Constituency - (Lok Sabha) Town & Village-wise Winner Parties- 2024, 2022, 2019, 2017, 2014, 2012 and 2009	3-11
	Administrative Setup (2011)	
3	District Sub-district Towns Villages Inhabited Villages Uninhabited Villages Village Panchayat Intermediate Panchayat	12-22
	Demographics (2011)	
4	Population Households Rural/Urban Population Towns and Villages by Population Size Sex Ratio (Total & 0-6 Years) Religious Population Social Population Literacy Rate	23-24
	Electoral Features	
5	Important Dates of Last Elections Held Electors by Gender Service Electors Voters Voters Turnout Polling Stations & Average Number of Electors per Polling Station Electors by Age Group Present Elected Representatives	25-30
	Historical Summary Election Results	
6	Vote Share of Major Parties Winning Margin (Number & Percentage) Polarity of Parties Summary Result of Assembly Segment of Parliamentary Election 2024, 2019, 2014, 2009, 2004 and 1999 Summary Result of Assembly Elections 2022, 2017, 2012, 2007 and 2002	31-43
	Polling Station Level Election Results	
7	Name and Number of Polling Station 2024, 2022, 2019, 2017, 2014, 2012 and 2009 Polling Station-wise Electors, Voters & Voters Turnout 2024, 2022, 2019, 2017, 2014, 2012 and 2009 Polling Station wise Elections Results 2024, 2022, 2019, 2017, 2014, 2012 and 2009	44-151
8	Panchayat and Local Bodies Election Results Panchayat Result 2014 Urban Local Bodies Result 2013	152-158
	Share of Assembly Constituency	
9	Share of Assembly Constituency - (Vidhan Sabha) in State, District and Parliamentary Constituency - (Lok Sabha)	159
	Socio-Economic Amenities (2011)	
10	Access to Administrative Units Agricultural, Manufacturing and Industrial Commodities Demographic Indicators Education Health & Manpower Drinking Water Supply Sanitation Entertainment and Recreations Infrastructure Power Food Allocation Distribution and Marketing of Agriculture Commodities Infrastructure Transport and Road Infrastructure Communication Banking and Financial Services Land Use Irrigation Source	160-175
11	Abbreviation & Sources	176-177
12	Disclaimer	178

Location & Political Map



Administrative Setup

List of Village Panchayat & Intermediate Panchayat (Block) Name - 2011

Village Name	Village Panchayat Name	Intermediate Panchayat Name
Agoda	Agoda	Bhatwari
Aleth	Dhanpur	Bhatwari
Astal	Astal	Dunda
Athali	Athali	Bhatwari
Aungee	Maneri	Bhatwari
Bagi	Bagi	Dunda
Bagori	Bagori	Bhatwari
Bagsari	Bagsari	Dunda
Bagyal Gaon	Kali Gaon	Dunda
Bagyal Gaon	Bagyal Gaon	Bhatwari
Bandrani	Bandrani	Bhatwari
Barahat Range	-	Forest CD Block Uttarkashi
Bareth	Bareth	Dunda
Barethi Patti Barsali	Barethi	Dunda
Barsali	Barsali	Dunda
Barsu	Barsu	Bhatwari
Baun	Baun	Dunda
Bhadusera	Kunsi	Dunda
Bhailuda	Bhailuda	Bhatwari
Bhaintgaon	Bhaintgaon	Dunda
Bhangeli	Bhangeli	Bhatwari
Bhankoli	Bhankoli	Bhatwari
Bharargaon	Bharargaon	Dunda
Bharkot	Bharkot	Dunda
Bhatwari	Bhatwari Ghanari	Dunda
Bhatwari	Bhatwari	Bhatwari
Bhela Tipri	Bhela Tipri	Bhatwari
Bhetiyara	Bhetiyara	Dunda
Bhukki	Bhukki	Bhatwari

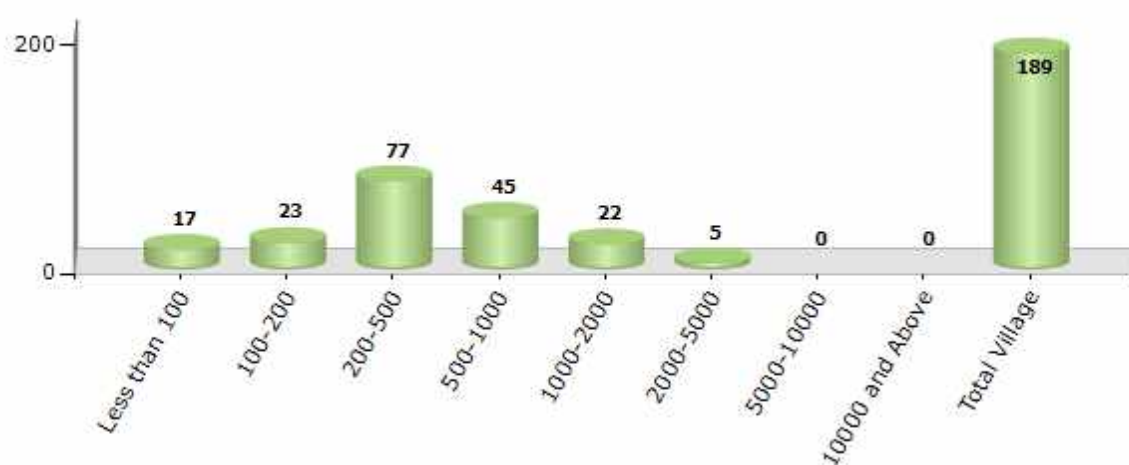
Contd....

Demographics

Number of Villages by Population Size - 2011

Less than 100	100-200	200-500	500-1000	1000-2000	2000-5000	5000-10000	10000 and Above	Total Village
17	23	77	45	22	5	0	0	189

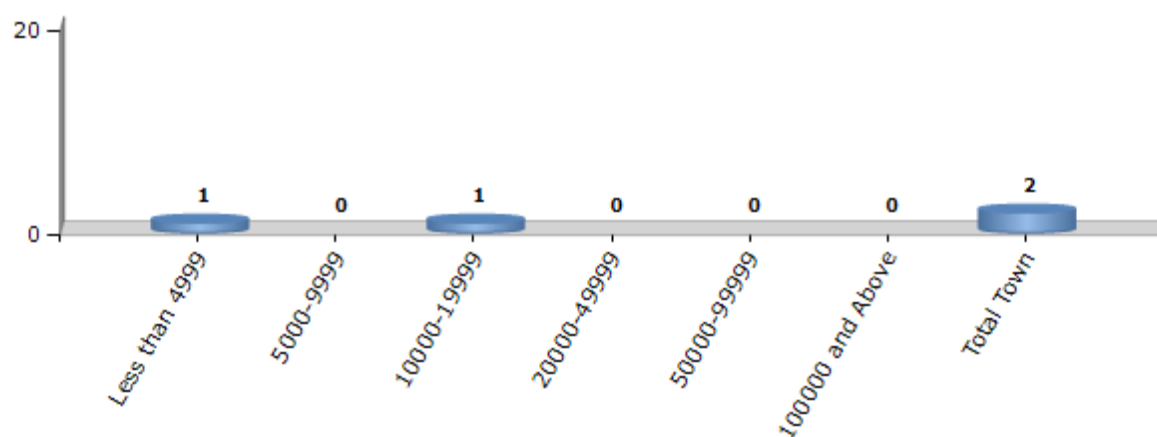
Number of Villages by Population Size - 2011



Number of Towns by Population Size - 2011

Less than 4999	5000-9999	10000-19999	20000-49999	50000-99999	100000 and Above	Total Town
1	0	1	0	0	0	2

Number of Towns by Population Size - 2011

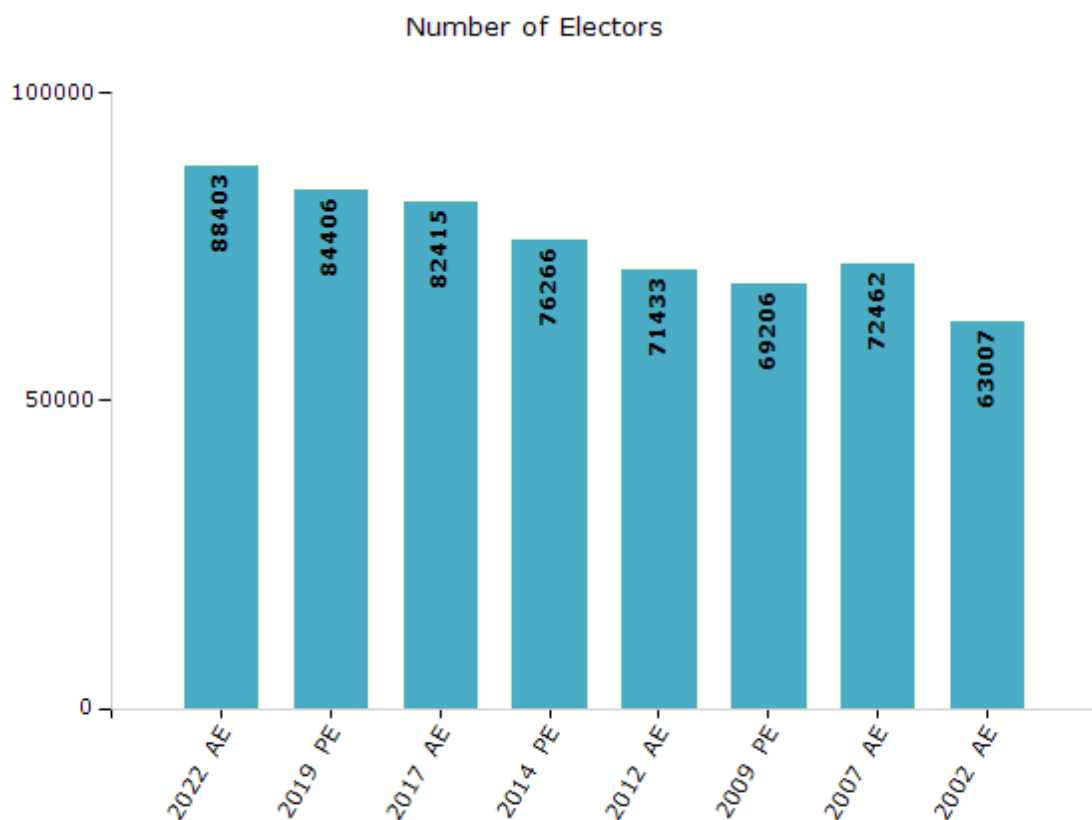


Electoral Features

Electors by Male & Female

Year	Male	Female	Others	Total
2022 AE	46093	42309	1	88403
2019 PE	44206	40200	0	84406
2017 AE	42815	39600	0	82415
2014 PE	39768	36498	0	76266
2012 AE	37099	34334	0	71433

Year	Male	Female	Others	Total
2009 PE	34816	34390	-	69206
2007 AE	36614	35848	-	72462
2004 PE	-	-	-	-
2002 AE	32799	30208	-	63007

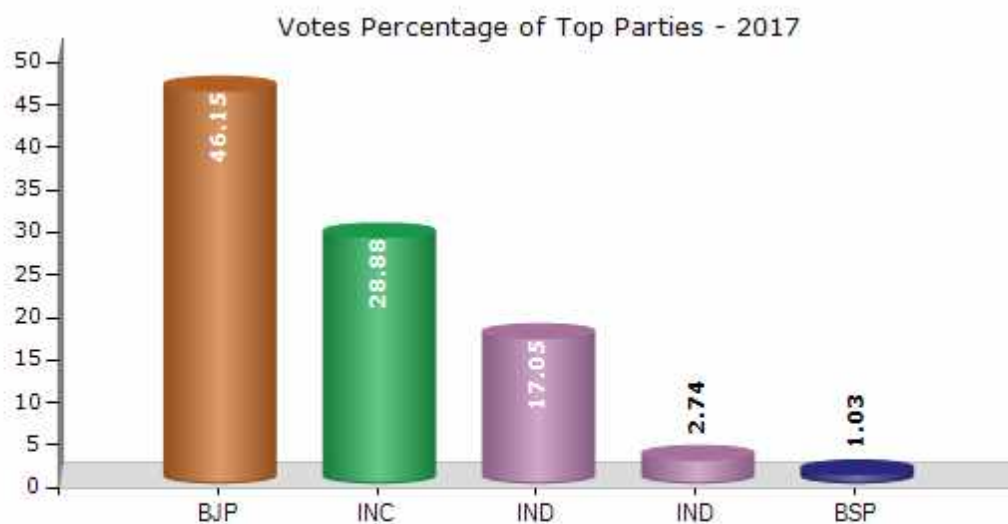


Note : AE : Assembly Election, PE : Assembly Segment of Parliamentary Election

Historical Summary Election Results

Summary Result of Assembly Election - 2017

Candidate Name	Party	Votes	Votes %
Gopal Singh Rawat	BJP	25683	46.15
Vijaypal Singh Sajwan	INC	16073	28.88
Suratram Nautiyal	IND	9491	17.05
Bhupendra Singh	IND	1526	2.74
Vijaypal Tangani	BSP	576	1.03
Mahaveer Prasad	CPI	553	0.99
Rajbeer Singh Parmar	RJSD	412	0.74
Ratan Lal Verma	IND	213	0.38
Vishnupal Singh Rawat	UKKD	192	0.34
	NOTA	937	1.68



Polling Station Level Election Results

Number and Name of Polling Stations (PS) (2022)

Number of Polling Stations	Name of Polling Stations	Number of Polling Stations	Name of Polling Stations
1	Mukhwa	22	Kyark
2	Harsil	23	Malla
3	Bagori	24	Bhelatipri
4	Dharali	25	Lata
5	Gangotri puri	26	Sainj
6	Jhala	27	Jakhol
7	Purali	28	Gorsali
8	Jasgur	29	Pahi
9	Sukhi	30	Dwari
10	Sunagar	31	Jamak
11	Hurri	32	Kamar
12	Bhangeli	33	Maneri
13	Tihar	34	Ongi
14	Sanglai	35	Didsari
15	Kujjan	36	Bayana may Lonthru
16	Raithal	37	Saura
17	Nateen	38	Sari
18	Bandrani	39	Syawa
19	Barsu	40	Salu (Khani)
20	Pala maradi	41	Salang
21	Bhatwari	42	Bhukki

Contd....

Polling Station Level Election Results

Polling Station-wise Votes Secured by Overall Top Five Parties in Gangotri Assembly in Assembly Election (AE) under Tehri Garhwal Parliamentary Constituency in Uttarakhand (2022)

No. of Polling Station	Winner - Suresh Singh Chauhan (BJP)	Runner-up - Vijaypal Singh Sajwan (INC)	3rd - Ajay Kothyal (Colonel Retd) Kc,Sc,Vsm (AAP)	4th - Navneet Uniyal (IND)	5th - Budhi Lal (BSP)	NOTA	Other	Total Votes Secured
36	243	43	42	0	0	0	6	334
37	142	78	35	1	2	1	4	263
38	155	112	6	0	2	0	2	277
39	186	55	18	0	0	0	1	260
40	105	31	35	0	2	0	4	177
41	186	54	7	0	0	0	5	252
42	70	20	14	0	0	1	1	106
43	159	83	22	0	0	0	1	265
44	53	14	10	0	0	0	0	77
45	130	35	25	0	0	0	0	190
46	147	94	37	0	0	0	5	283
47	272	120	74	0	9	1	13	489
48	149	120	35	0	1	0	6	311
49	100	57	29	0	0	0	3	189
50	146	99	34	1	1	1	5	287
51	341	256	75	1	4	4	17	698
52	355	149	56	2	1	4	14	581
53	234	130	28	0	2	1	13	408
54	241	209	99	0	12	1	7	569
55	182	80	128	3	1	3	16	413
56	111	79	39	1	1	1	9	241
57	359	154	68	1	2	5	12	601
58	243	94	30	0	0	0	8	375
59	107	82	38	1	0	1	1	230
60	123	89	59	2	5	2	13	293
61	195	182	33	4	2	0	6	422
62	167	93	30	0	0	1	4	295
63	180	104	16	0	3	1	11	315
64	114	140	32	0	1	2	5	294
65	77	39	14	0	0	1	3	134
66	273	194	52	6	4	2	7	538
67	152	130	26	0	3	1	4	316
68	189	59	27	4	0	1	5	285
69	43	20	6	2	0	0	3	74
70	283	98	26	1	0	0	10	418

Contd....

Polling Station Level Election Results

Winner, Runner-up and 3rd Party Position & Winning Margin According to Polling Stations in Gangotri Assembly in Assembly Election (AE) under Tehri Garhwal Parliamentary Constituency in Uttarakhand (2022)

Polling Station Number	Winner Party	Winner Votes (%)	Runner-up Party	Runner-up Votes (%)	Winning Margin Votes (%)	Third Party	Third Party Votes (%)	Other Votes (%)
71	BJP	232 (43.86)	INC	173 (32.7)	59 (11.16)	AAP	107 (20.23)	17 (3.21)
72	BJP	71 (48.97)	INC	63 (43.45)	8 (5.52)	AAP	10 (6.9)	1 (0.69)
73	BJP	197 (55.97)	INC	115 (32.67)	82 (23.3)	AAP	26 (7.39)	14 (3.98)
74	BJP	174 (63.74)	INC	70 (25.64)	104 (38.1)	AAP	20 (7.33)	9 (3.3)
75	BJP	271 (50.75)	INC	176 (32.96)	95 (17.79)	AAP	73 (13.67)	14 (2.62)
76	BJP	226 (54.99)	INC	146 (35.52)	80 (19.47)	AAP	32 (7.79)	7 (1.7)
77	BJP	242 (44.4)	INC	182 (33.39)	60 (11.01)	AAP	102 (18.72)	19 (3.49)
78	INC	161 (47.08)	BJP	133 (38.89)	28 (8.19)	AAP	37 (10.82)	11 (3.22)
79	BJP	222 (47.64)	INC	164 (35.19)	58 (12.45)	AAP	65 (13.95)	15 (3.22)
80	BJP	125 (42.66)	INC	99 (33.79)	26 (8.87)	AAP	55 (18.77)	14 (4.78)
81	BJP	64 (59.81)	INC	32 (29.91)	32 (29.9)	AAP	10 (9.35)	1 (0.93)
82	BJP	181 (47.14)	INC	149 (38.8)	32 (8.34)	AAP	36 (9.38)	18 (4.69)
83	BJP	148 (51.57)	INC	107 (37.28)	41 (14.29)	AAP	19 (6.62)	13 (4.53)
84	BJP	98 (69.5)	INC	29 (20.57)	69 (48.93)	AAP	10 (7.09)	4 (2.84)
85	BJP	147 (54.44)	INC	108 (40)	39 (14.44)	AAP	13 (4.81)	2 (0.74)
86	BJP	104 (67.1)	INC	31 (20)	73 (47.1)	AAP	11 (7.1)	9 (5.81)
87	BJP	259 (64.43)	INC	110 (27.36)	149 (37.07)	AAP	21 (5.22)	12 (2.99)
88	BJP	371 (69.48)	INC	134 (25.09)	237 (44.39)	AAP	18 (3.37)	11 (2.06)
89	BJP	271 (66.75)	INC	90 (22.17)	181 (44.58)	AAP	32 (7.88)	13 (3.2)
90	INC	111 (51.15)	BJP	83 (38.25)	28 (12.9)	AAP	18 (8.29)	5 (2.3)
91	BJP	273 (51.8)	INC	195 (37)	78 (14.8)	AAP	41 (7.78)	18 (3.42)
92	BJP	236 (53.27)	INC	158 (35.67)	78 (17.6)	AAP	33 (7.45)	16 (3.61)
93	BJP	407 (56.22)	INC	227 (31.35)	180 (24.87)	AAP	66 (9.12)	24 (3.31)
94	BJP	290 (58.59)	INC	143 (28.89)	147 (29.7)	AAP	47 (9.49)	15 (3.03)
95	BJP	281 (50.81)	INC	192 (34.72)	89 (16.09)	AAP	61 (11.03)	19 (3.44)
96	INC	221 (42.58)	BJP	219 (42.2)	2 (0.38)	AAP	64 (12.33)	15 (2.89)
97	INC	374 (55.65)	BJP	195 (29.02)	179 (26.63)	AAP	78 (11.61)	25 (3.72)
98	BJP	215 (46.74)	INC	179 (38.91)	36 (7.83)	AAP	46 (10)	20 (4.35)
99	INC	225 (46.49)	BJP	210 (43.39)	15 (3.1)	AAP	36 (7.44)	13 (2.69)
100	BJP	216 (53.07)	INC	141 (34.64)	75 (18.43)	AAP	43 (10.57)	7 (1.72)
101	INC	390 (55.48)	BJP	202 (28.73)	188 (26.75)	AAP	83 (11.81)	28 (3.98)
102	BJP	166 (42.89)	INC	149 (38.5)	17 (4.39)	AAP	54 (13.95)	18 (4.65)
103	BJP	153 (51.17)	INC	110 (36.79)	43 (14.38)	AAP	30 (10.03)	6 (2.01)
104	BJP	153 (48.57)	INC	120 (38.1)	33 (10.47)	AAP	31 (9.84)	11 (3.49)
105	BJP	199 (54.82)	INC	130 (35.81)	69 (19.01)	AAP	29 (7.99)	5 (1.38)

Contd....

Socio-Economic Amenities - Rural

Access to Education Facilities

Particulars	Number of Villages (% of Population)				
	Available	Not Available	If Not Available (Distance of Nearest Facility)		
			A	B	C
Govt. Primary School	166 (95)	20 (5)	15 (5)	2 (0)	3 (0)
Private Primary School	27 (26)	159 (74)	0 (0)	0 (0)	0 (0)
Govt. Middle School	89 (61)	97 (39)	68 (25)	20 (7)	5 (1)
Private Middle School	9 (13)	177 (87)	0 (0)	0 (0)	0 (0)
Govt. Secondary School	41 (36)	145 (64)	90 (41)	40 (15)	13 (4)
Private Secondary School	4 (8)	182 (92)	0 (0)	0 (0)	0 (0)
Govt. Senior Secondary School	28 (27)	158 (73)	78 (39)	60 (25)	19 (7)
Private Senior Secondary School	2 (2)	184 (98)	0 (0)	0 (0)	0 (0)
Govt. Arts and Science Degree College	0 (0)	186 (100)	16 (17)	20 (15)	149 (68)
Private Arts and Science Degree College	0 (0)	186 (100)	0 (0)	0 (0)	1 (0)
Govt. Engineering College	0 (0)	186 (100)	0 (0)	0 (0)	1 (0)
Private Engineering College	0 (0)	186 (100)	0 (0)	0 (0)	185 (100)
Govt. Medicine College	0 (0)	186 (100)	0 (0)	0 (0)	0 (0)
Private Medicine College	0 (0)	186 (100)	0 (0)	0 (0)	186 (100)
Govt. Management Institute	0 (0)	186 (100)	0 (0)	0 (0)	0 (0)
Private Management Institute	0 (0)	186 (100)	0 (0)	0 (0)	186 (100)
Govt. Polytechnic	1 (1)	185 (99)	15 (16)	20 (15)	150 (68)
Private Polytechnic	0 (0)	186 (100)	0 (0)	0 (0)	0 (0)
Govt. Vocational Training School/ITI	0 (0)	186 (100)	16 (17)	20 (15)	150 (68)
Private Vocational Training School/ITI	0 (0)	186 (100)	0 (0)	0 (0)	0 (0)
Govt. Non Formal Training Centre	0 (0)	186 (100)	0 (0)	0 (0)	0 (0)
Private Non Formal Training Centre	0 (0)	186 (100)	16 (17)	20 (15)	150 (68)
Govt. School For Disabled	0 (0)	186 (100)	0 (0)	0 (0)	186 (100)
Private School For Disabled	0 (0)	186 (100)	0 (0)	0 (0)	0 (0)
Government Others	0 (0)	186 (100)	0 (0)	0 (0)	0 (0)
Private Others	0 (0)	186 (100)	16 (17)	20 (15)	150 (68)

Note : Distance A : Less than 5 km; B : Between 5-10 km; C : 10+ km.; Source : Data Analysis is based on 2011 Census.

DISCLAIMER

The Terms of Use and Disclaimer of Datanet India Private Limited (hereinafter referred to as "Datanet") for use of this analysis report of **Gangotri Assembly Constituency (Gangotri Vidhan Sabha)** :-

1. **Assembly Factbook™** is a Registered Trade Mark owned by Datanet.
2. All the maps are sketched and graphical representation only and have not been drawn to the scale and also not to represent the actual geographical area or boundary of the unit.
3. The data for the aforesaid analysis is based on authentic sources and has been culled from the various publications of Census, CSO and NSSO for district and block level data, various central and state government departments, Central & State Elections Commissions and the concerned Returning Officers' releases, Electoral Rolls, Election results and allied publications, internal assessment, surveys, estimates and analysis. Therefore, certain adjustment of data at micro level may have been done to arrive closer to the macro data.
4. Data have been provided on an "As Is" and "As AVAILABLE" basis
5. The colours shown in the maps or diagram and charts of a particular party, alliance or AC are indicative and do not represent them.
6. This publication which includes maps, sheets, graphs and data would be the property under copyright of Datanet only. The user may use these for its internal study, analysis and research purposes. It's public display, re-selling or any commercial uses by the user are not allowed.
7. Datanet has taken due care and caution in compilation and processing of data and allied information, but does not guarantee the accuracy, adequacy or completeness of any information/analysis and will be not responsible for any errors or omissions or for the results obtained from the use of such information/analysis.
8. All the contents for the publication have been culled from various authentic sources and Datanet reasonably believes such sources to be reliable, but does not make any representations, express or implied as to the accuracy or fitness of use of such information. The information or contents of the information/analysis do not constitute advice and should not be relied upon in making (or refraining from making) any decision. Any reliance placed upon the information provided by Datanet is the sole responsibility and strictly at the user's risk.
9. In no event will Datanet be liable for any damages (including, without limitation, damages for loss of business projects, or loss of profits) arising in contract, tort or otherwise from the use of or inability to use any of its contents, or from any action taken (or refrained from being taken) as a result of using the analysis or any of its contents. Datanet its directors, owners, editors, officials, employees, distributor and agents or any associate will not be liable for any errors in the information contained or any consequences arising from the use of the contents of the provided information/analysis.
10. If any provision of these terms and conditions is held invalid or illegal or unenforceable for any reason by any court of competent jurisdiction, such provision shall be severed and the remainder of provisions of the terms and conditions shall continue in full force and effect as if the Term of Use had been executed with the invalid, illegal or unenforceable provision eliminated.
11. If there are any discrepancies in the information provided, please bring it to attention of Datanet for suitable rectification measures.

**Buy Online This Complete Book At
Datanet India eBooks Store**

www.indiastatpublications.com

or go directly at

**[http://www.indiastatpublications.com/
Assembly_factbook/Uttarakhand/Tehri_Garhwal/ Gangotri](http://www.indiastatpublications.com/Assembly_factbook/Uttarakhand/Tehri_Garhwal/Gangotri)**

 **indiastat**elections

ISBN : 978-93-5822-604-1



9 789358 226041