



Uttarakhand

# Assembly Factbook™

Purola Assembly Constituency



Key Electoral Data of Purola  
Assembly Constituency (Vidhan Sabha)

Uttarakhand

# **Assembly Factbook™**

Purola Assembly Constituency



Purola Vidhan Sabha

**Editor & Director**

Dr. R.K. Thukral

**Research Editor**

Dr. Shafeeq Rahman

**Compiled, Researched and Published by  
Datanet India Pvt. Ltd.**

D-100, 1st Floor,

Okhla Industrial Area, Phase-I,

New Delhi- 110020.

Ph.: 91-11- 43580781-84

Email : support@indiastatpublications.com

Website : www.indiastatelections.com

**Online Book Store :**

www.indiastatpublications.com

**Report No. :** AFB/UK-001-0125

**ISBN :** 978-93-5822-620-1

**First Edition :** January, 2018

**Eighth Updated Edition :** January, 2025

**Price :** Rs.11500/-

US\$ 310

**© Datanet India Pvt. Ltd.**

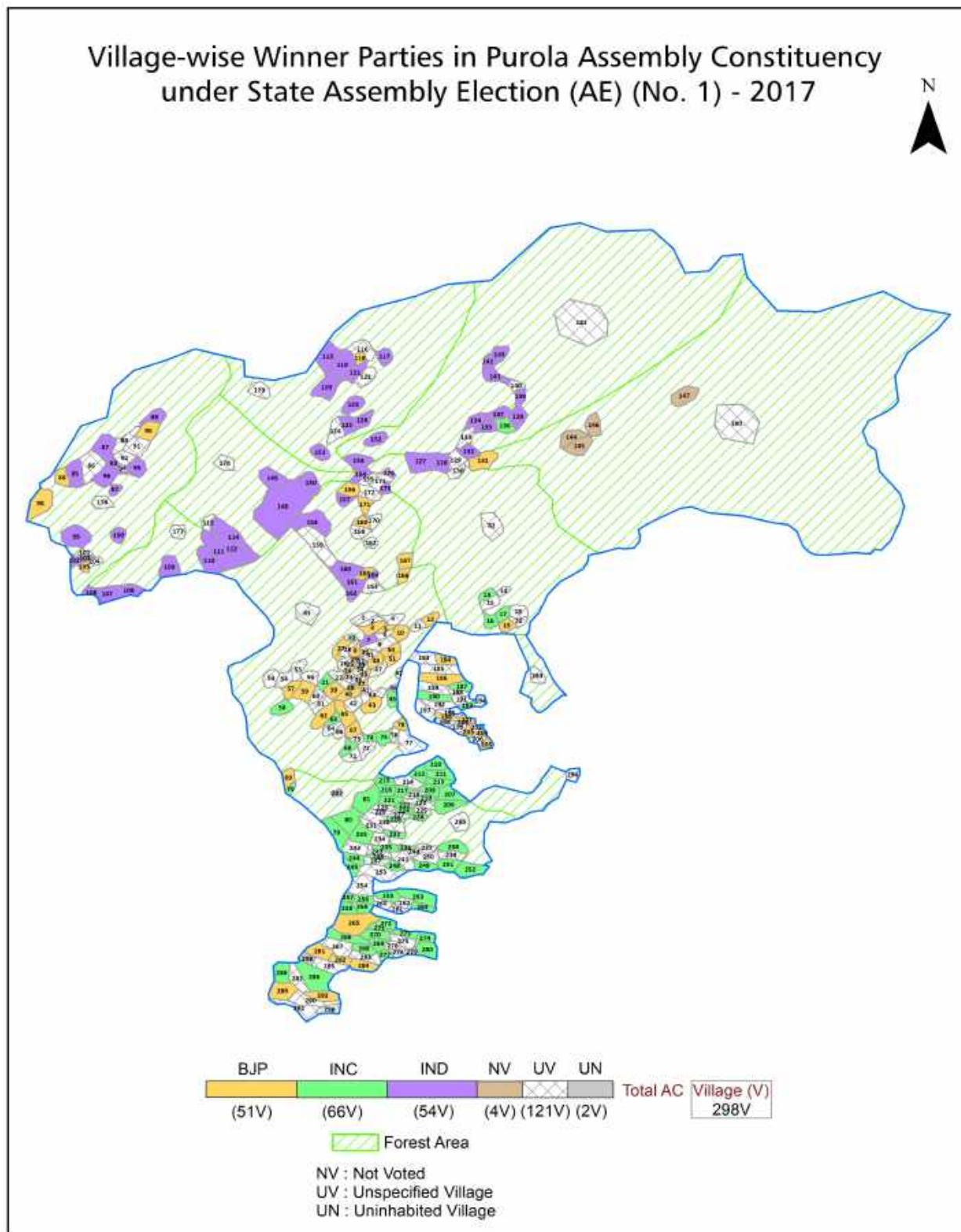
All rights reserved. No part of this book may be reproduced, stored in a retrieval system or transmitted in any form or by any means, mechanical photocopying, photographing, scanning, recording or otherwise without the prior written permission of the publisher. Please refer to Disclaimer at page no. 187 for the use of this publication.

Printed in India

## Contents

No.	Particulars	Page No.
	<b>Introduction</b>	
1	Assembly Constituency - (Vidhan Sabha) at a Glance   Features of Assembly as per Delimitation Commission of India (2008)	1-2
	<b>Location and Political Maps</b>	
2	Location Map   Boundaries of Assembly Constituency - (Vidhan Sabha) in District   Boundaries of Assembly Constituency under Parliamentary Constituency - (Lok Sabha)   Village-wise Winner Parties- 2024, 2022, 2019, 2017, 2014, 2012 and 2009	3-11
	<b>Administrative Setup (2011)</b>	
3	District   Sub-district   Towns   Villages   Inhabited Villages   Uninhabited Villages   Village Panchayat   Intermediate Panchayat	12-27
	<b>Demographics (2011)</b>	
4	Population   Households   Rural/Urban Population   Villages by Population Size   Sex Ratio (Total & 0-6 Years)   Religious Population   Social Population   Literacy Rate	28-29
	<b>Electoral Features</b>	
5	Important Dates of Last Elections Held   Electors by Gender   Service Electors   Voters   Voters Turnout   Polling Stations & Average Number of Electors per Polling Station   Electors by Age Group   Present Elected Representatives	30-35
	<b>Historical Summary Election Results</b>	
6	Vote Share of Major Parties   Winning Margin (Number & Percentage)   Polarity of Parties   Summary Result of Assembly Segment of Parliamentary Election 2024, 2019, 2014, 2009, 2004 and 1999   Summary Result of Assembly Elections 2022, 2017, 2012, 2007 and 2002	36-48
	<b>Polling Station Level Election Results</b>	
7	Name and Number of Polling Station 2024, 2022, 2019, 2017, 2014, 2012 and 2009   Polling Station-wise Electors, Voters & Voters Turnout 2024, 2022, 2019, 2017, 2014, 2012 and 2009   Polling Station wise Elections Results 2024, 2022, 2019, 2017, 2014, 2012 and 2009	49-159
8	<b>Panchayat and Local Bodies Election Results</b> Panchayat Result 2014	160-167
	<b>Share of Assembly Constituency</b>	
9	Share of Assembly Constituency - (Vidhan Sabha) in State, District and Parliamentary Constituency - (Lok Sabha)	168
	<b>Socio-Economic Amenities (2011)</b>	
10	Access to Administrative Units   Agricultural, Manufacturing and Industrial Commodities   Demographic Indicators   Education   Health & Manpower   Drinking Water Supply   Sanitation   Entertainment and Recreations Infrastructure   Power   Food Allocation Distribution and Marketing of Agriculture Commodities Infrastructure   Transport and Road Infrastructure   Communication   Banking and Financial Services   Land Use   Irrigation Source	169-184
11	<b>Abbreviation &amp; Sources</b>	185-186
12	<b>Disclaimer</b>	187

## Location & Political Map





## Administrative Setup

### List of Village Panchayat & Intermediate Panchayat (Block) Name - 2011

Village Name	Village Panchayat Name	Intermediate Panchayat Name
Adasu	Chiwa	Mori
Angora	Shree Kot	Puraula
Arakot	Arakot	Mori
Arun	Binyali	Naugaon
Badogi	Rikhaun	Naugaon
Bagasu	Bagasu	Naugaon
Bainol	Maitar	Mori
Bajlari	Bajlari	Naugaon
Balari	Balari	Naugaon
Balawate	Monda	Mori
Bamsu	Odata	Mori
Bandiyar	-	Forest CD Block Uttarkashi
Barnali	Jhotari	Mori
Barnigad Khatal	Siguni	Naugaon
Begal	Begal	Mori
Besti Palli	Besti	Puraula
Bestiwalli	Besti	Puraula
Bhadrali	Bhadrali	Puraula
Bhankoli	Bhankoli	Naugaon
Bhankwar	Bhankwar	Mori
Bhatiya	Bhatiya	Naugaon
Bhaunti	Bhaunti	Naugaon
Bhitri	Bhitri	Mori
Bhunar Gaon	Diyari	Naugaon
Bhutanu	Bhutanu	Mori
Bigrari	Bigrari	Naugaon
Bigsari	Bigsari	Mori
Bijori	Bhaunti	Naugaon
Billagaon	Jarda	Naugaon

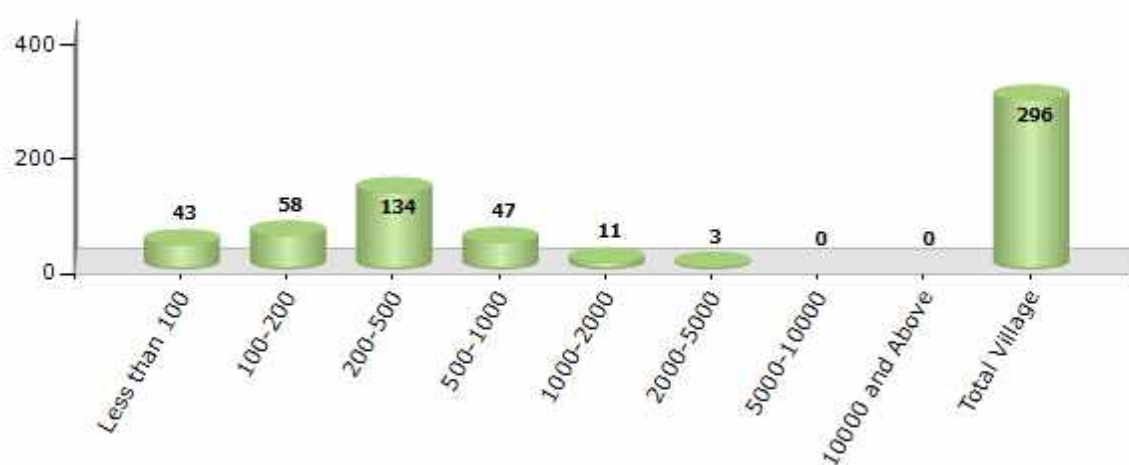
Contd....

## Demographics

### Number of Villages by Population Size - 2011

Less than 100	100-200	200-500	500-1000	1000-2000	2000-5000	5000-10000	10000 and Above	Total Village
43	58	134	47	11	3	0	0	296

Number of Villages by Population Size - 2011

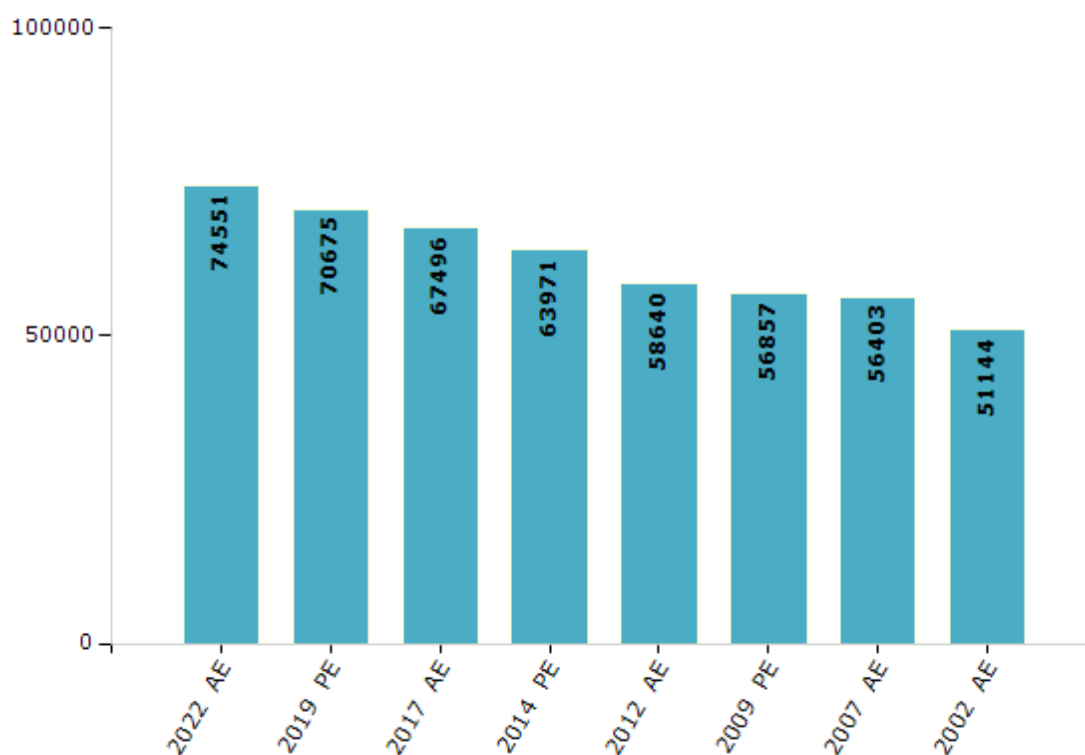


## Electoral Features

### Electors by Male & Female

Year	Male	Female	Others	Total	Year	Male	Female	Others	Total
2022 AE	38760	35791	0	74551	2009 PE	29012	27845	-	56857
2019 PE	36810	33865	0	70675	2007 AE	28476	27927	-	56403
2017 AE	35058	32438	0	67496	2004 PE	-	-	-	-
2014 PE	33214	30757	0	63971	2002 AE	26217	24927	-	51144
2012 AE	30378	28262	0	58640					

Number of Electors



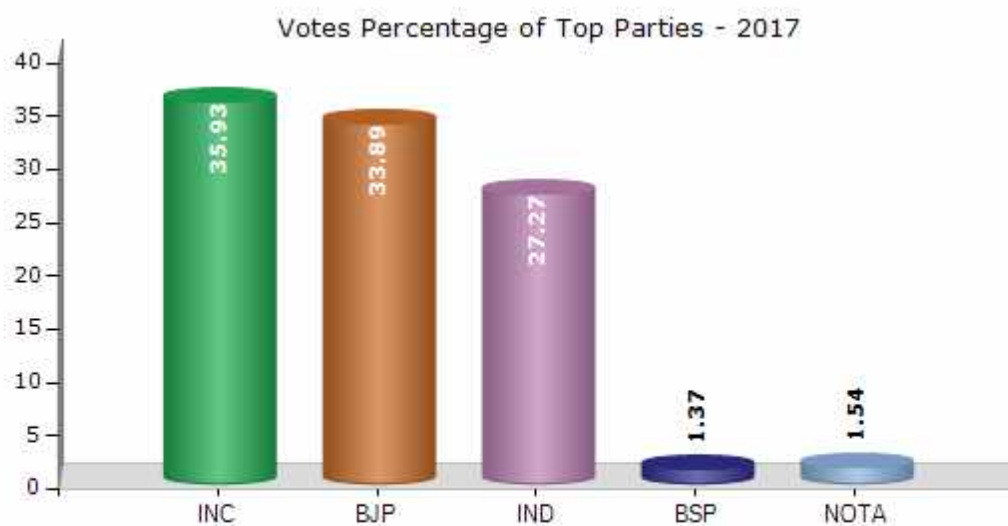
Note : AE : Assembly Election, PE : Assembly Segment of Parliamentary Election



## Historical Summary Election Results

### Summary Result of Assembly Election - 2017

Candidate Name	Party	Votes	Votes %
Rajkumar	INC	17798	35.93
Malchand	BJP	16785	33.89
Durgeshwar Lal	IND	13508	27.27
Ramlal	BSP	679	1.37
	NOTA	762	1.54



## Polling Station Level Election Results

### Number and Name of Polling Stations (PS) (2022)

Number of Polling Stations	Name of Polling Stations	Number of Polling Stations	Name of Polling Stations
1	Karra	22	Makhna
2	Shikaru	23	Purola
3	Dhakara	24	Purola
4	Pujeli	25	Kurra
5	Chandeli	26	Sunali
6	Saundari	27	Shrikot
7	Netri	28	Derika
8	Kantari	29	Suranu ki seri
9	Hudoli	30	Mahargaon
10	Thadung	31	Math
11	Panigaon	32	Kandiyalgaon
12	Sankhal	33	Moltari
13	Kamra	34	koti
14	Bhankoli	35	kharkyasem
15	Chhamrota	36	Gundiyatgaon
16	Thali	37	Dhikalgaon
17	Kumola Korna	38	Pora
18	Nauri	39	Rewri Syaluka
19	Khawlisera	40	Westi Palli
20	Khabli Shera	41	Sargaon Badiyar
21	Chhibala	42	Dingari

Contd....

## Polling Station Level Election Results

### Polling Station-wise Votes Secured by Overall Top Five Parties in Purola Assembly in Assembly Election (AE) under Tehri Garhwal Parliamentary Constituency in Uttarakhand (2022)

No. of Polling Station	Winner - Durgeshwar Lal (BJP)	Runner-up - Malchand (INC)	3rd - Prakash (AAP)	4th - Ram Prasad (RSHTLKNT)	5th - Chain Singh (SP)	NOTA	Other	Total Votes Secured
36	305	318	7	2	4	1	7	644
37	93	167	3	3	3	2	2	273
38	109	284	7	0	6	2	2	410
39	153	210	3	0	4	2	2	374
40	154	458	5	2	8	5	2	634
41	118	58	6	1	3	1	3	190
42	55	65	1	1	2	2	3	129
43	102	82	5	1	1	0	1	192
44	52	62	0	4	2	0	3	123
45	202	59	0	1	1	0	0	263
46	116	52	0	0	0	0	0	168
47	158	14	0	1	0	0	0	173
48	306	33	0	2	0	0	3	344
49	56	16	0	0	0	0	0	72
50	122	51	1	1	0	0	2	177
51	213	111	2	4	1	3	0	334
52	146	52	2	4	1	0	0	205
53	90	132	0	4	0	0	1	227
54	194	107	2	5	2	3	2	315
55	237	54	1	5	0	0	0	297
56	165	44	5	31	0	1	3	249
57	154	63	0	1	1	0	15	234
58	97	39	0	0	0	0	1	137
59	124	186	3	6	4	9	5	337
60	74	13	0	3	0	0	0	90
61	219	86	1	2	0	5	2	315
62	320	45	1	80	3	3	3	455
63	49	4	0	10	0	1	0	64
64	68	15	0	75	2	6	0	166
65	123	105	10	7	2	1	2	250
66	103	127	2	6	2	2	5	247
67	227	177	4	2	3	2	3	418
68	173	100	1	1	4	1	1	281
69	193	211	3	4	5	2	6	424
70	127	57	1	2	1	2	1	191

Contd....

## Polling Station Level Election Results

**Winner, Runner-up and 3rd Party Position & Winning Margin According to Polling Stations in Purola Assembly in Assembly Election (AE) under Tehri Garhwal Parliamentary Constituency in Uttarakhand (2022)**

Polling Station Number	Winner Party	Winner Votes (%)	Runner-up Party	Runner-up Votes (%)	Winning Margin Votes (%)	Third Party	Third Party Votes (%)	Other Votes (%)
71	BJP	96 (71.64)	INC	38 (28.36)	58 (43.28)	AAP	0 (0)	0 (0)
72	INC	155 (81.15)	BJP	34 (17.8)	121 (63.35)	AAP	1 (0.52)	1 (0.52)
73	BJP	173 (77.23)	INC	48 (21.43)	125 (55.8)	SP	1 (0.45)	2 (0.89)
74	BJP	281 (55.42)	INC	208 (41.03)	73 (14.39)	BSP	5 (0.99)	13 (2.56)
75	BJP	220 (86.96)	INC	23 (9.09)	197 (77.87)	BSP	5 (1.98)	5 (1.98)
76	BJP	159 (76.81)	INC	38 (18.36)	121 (58.45)	AAP	3 (1.45)	7 (3.38)
77	BJP	253 (50.5)	INC	212 (42.32)	41 (8.18)	SP	12 (2.4)	24 (4.79)
78	INC	26 (46.43)	BJP	22 (39.29)	4 (7.14)	RSHTLKNT	4 (7.14)	4 (7.14)
79	BJP	177 (87.19)	INC	20 (9.85)	157 (77.34)	RSHTLKNT	1 (0.49)	5 (2.46)
80	BJP	122 (54.71)	INC	94 (42.15)	28 (12.56)	SP	3 (1.35)	4 (1.79)
81	BJP	299 (81.92)	INC	63 (17.26)	236 (64.66)	SP	2 (0.55)	1 (0.27)
82	INC	201 (73.09)	BJP	69 (25.09)	132 (48)	SP	3 (1.09)	2 (0.73)
83	INC	78 (60.47)	BJP	48 (37.21)	30 (23.26)	BSP	2 (1.55)	1 (0.78)
84	BJP	278 (69.67)	INC	109 (27.32)	169 (42.35)	RSHTLKNT	5 (1.25)	7 (1.75)
85	BJP	207 (73.67)	INC	62 (22.06)	145 (51.61)	SP	4 (1.42)	8 (2.85)
86	BJP	214 (78.68)	INC	47 (17.28)	167 (61.4)	RSHTLKNT	4 (1.47)	7 (2.57)
87	BJP	81 (80.2)	INC	18 (17.82)	63 (62.38)	RSHTLKNT	1 (0.99)	1 (0.99)
88	BJP	305 (73.49)	INC	100 (24.1)	205 (49.39)	SP	3 (0.72)	7 (1.69)
89	BJP	128 (89.51)	INC	13 (9.09)	115 (80.42)	RSHTLKNT	1 (0.7)	1 (0.7)
90	BJP	367 (91.29)	INC	20 (4.98)	347 (86.31)	SP	4 (1)	11 (2.74)
91	BJP	217 (90.79)	INC	16 (6.69)	201 (84.1)	AAP	2 (0.84)	4 (1.67)
92	BJP	85 (90.43)	INC	7 (7.45)	78 (82.98)	AAP	1 (1.06)	1 (1.06)
93	BJP	618 (97.02)	INC	14 (2.2)	604 (94.82)	SP	2 (0.31)	3 (0.47)
94	BJP	545 (63.01)	INC	295 (34.1)	250 (28.91)	AAP	7 (0.81)	18 (2.08)
95	BJP	176 (82.63)	INC	26 (12.21)	150 (70.42)	AAP	3 (1.41)	8 (3.76)
96	BJP	157 (90.23)	INC	14 (8.05)	143 (82.18)	RSHTLKNT	1 (0.57)	2 (1.15)
97	BJP	98 (70.5)	INC	35 (25.18)	63 (45.32)	AAP	2 (1.44)	4 (2.88)
98	BJP	67 (83.75)	INC	9 (11.25)	58 (72.5)	SP	3 (3.75)	1 (1.25)
99	BJP	203 (76.6)	INC	56 (21.13)	147 (55.47)	RSHTLKNT	3 (1.13)	3 (1.13)
100	BJP	113 (52.56)	INC	88 (40.93)	25 (11.63)	AAP	6 (2.79)	8 (3.72)
101	BJP	230 (73.02)	INC	70 (22.22)	160 (50.8)	AAP	5 (1.59)	10 (3.17)
102	BJP	93 (78.81)	INC	18 (15.25)	75 (63.56)	BSP	5 (4.24)	2 (1.69)
103	BJP	113 (46.5)	INC	105 (43.21)	8 (3.29)	SP	7 (2.88)	18 (7.41)
104	INC	204 (56.04)	BJP	129 (35.44)	75 (20.6)	SP	11 (3.02)	20 (5.49)
105	BJP	567 (90.14)	INC	54 (8.59)	513 (81.55)	BSP	4 (0.64)	4 (0.64)

Contd....

## Socio-Economic Amenities - Rural

### Access to Education Facilities

Particulars	Number of Villages (% of Population)				
	Available	Not Available	If Not Available (Distance of Nearest Facility)		
			A	B	C
Govt. Primary School	252 (96)	44 (4)	34 (4)	4 (0)	5 (0)
Private Primary School	24 (21)	272 (79)	0 (0)	0 (0)	0 (0)
Govt. Middle School	122 (59)	174 (41)	114 (28)	41 (8)	16 (2)
Private Middle School	12 (13)	284 (87)	1 (0)	0 (0)	0 (0)
Govt. Secondary School	38 (26)	258 (74)	97 (26)	95 (28)	64 (18)
Private Secondary School	3 (7)	293 (93)	0 (0)	1 (0)	0 (0)
Govt. Senior Secondary School	24 (19)	272 (81)	79 (22)	95 (27)	98 (32)
Private Senior Secondary School	1 (0)	295 (100)	0 (0)	0 (0)	0 (0)
Govt. Arts and Science Degree College	0 (0)	296 (100)	12 (8)	51 (20)	233 (73)
Private Arts and Science Degree College	0 (0)	296 (100)	0 (0)	0 (0)	0 (0)
Govt. Engineering College	0 (0)	296 (100)	0 (0)	0 (0)	0 (0)
Private Engineering College	0 (0)	296 (100)	0 (0)	0 (0)	296 (100)
Govt. Medicine College	0 (0)	296 (100)	0 (0)	0 (0)	0 (0)
Private Medicine College	0 (0)	296 (100)	0 (0)	0 (0)	296 (100)
Govt. Management Institute	0 (0)	296 (100)	0 (0)	0 (0)	0 (0)
Private Management Institute	0 (0)	296 (100)	0 (0)	0 (0)	296 (100)
Govt. Polytechnic	1 (1)	295 (99)	0 (0)	0 (0)	295 (99)
Private Polytechnic	0 (0)	296 (100)	0 (0)	0 (0)	0 (0)
Govt. Vocational Training School/ITI	0 (0)	296 (100)	12 (8)	47 (19)	237 (73)
Private Vocational Training School/ITI	0 (0)	296 (100)	0 (0)	0 (0)	0 (0)
Govt. Non Formal Training Centre	0 (0)	296 (100)	0 (0)	0 (0)	0 (0)
Private Non Formal Training Centre	0 (0)	296 (100)	0 (0)	0 (0)	296 (100)
Govt. School For Disabled	0 (0)	296 (100)	0 (0)	0 (0)	296 (100)
Private School For Disabled	0 (0)	296 (100)	0 (0)	0 (0)	0 (0)
Government Others	0 (0)	296 (100)	0 (0)	0 (0)	0 (0)
Private Others	0 (0)	296 (100)	0 (0)	0 (0)	296 (100)

Note : Distance A : Less than 5 km; B : Between 5-10 km; C : 10+ km.; Source : Data Analysis is based on 2011 Census.

## DISCLAIMER

The Terms of Use and Disclaimer of Datanet India Private Limited (hereinafter referred to as "Datanet") for use of this analysis report of **Purola Assembly Constituency (Purola Vidhan Sabha)** :-

1. **Assembly Factbook™** is a Registered Trade Mark owned by Datanet.
2. All the maps are sketched and graphical representation only and have not been drawn to the scale and also not to represent the actual geographical area or boundary of the unit.
3. The data for the aforesaid analysis is based on authentic sources and has been culled from the various publications of Census, CSO and NSSO for district and block level data, various central and state government departments, Central & State Elections Commissions and the concerned Returning Officers' releases, Electoral Rolls, Election results and allied publications, internal assessment, surveys, estimates and analysis. Therefore, certain adjustment of data at micro level may have been done to arrive closer to the macro data.
4. Data have been provided on an "As Is" and "As AVAILABLE" basis
5. The colours shown in the maps or diagram and charts of a particular party, alliance or AC are indicative and do not represent them.
6. This publication which includes maps, sheets, graphs and data would be the property under copyright of Datanet only. The user may use these for its internal study, analysis and research purposes. It's public display, re-selling or any commercial uses by the user are not allowed.
7. Datanet has taken due care and caution in compilation and processing of data and allied information, but does not guarantee the accuracy, adequacy or completeness of any information/analysis and will be not responsible for any errors or omissions or for the results obtained from the use of such information/analysis.
8. All the contents for the publication have been culled from various authentic sources and Datanet reasonably believes such sources to be reliable, but does not make any representations, express or implied as to the accuracy or fitness of use of such information. The information or contents of the information/analysis do not constitute advice and should not be relied upon in making (or refraining from making) any decision. Any reliance placed upon the information provided by Datanet is the sole responsibility and strictly at the user's risk.
9. In no event will Datanet be liable for any damages (including, without limitation, damages for loss of business projects, or loss of profits) arising in contract, tort or otherwise from the use of or inability to use any of its contents, or from any action taken (or refrained from being taken) as a result of using the analysis or any of its contents. Datanet its directors, owners, editors, officials, employees, distributor and agents or any associate will not be liable for any errors in the information contained or any consequences arising from the use of the contents of the provided information/analysis.
10. If any provision of these terms and conditions is held invalid or illegal or unenforceable for any reason by any court of competent jurisdiction, such provision shall be severed and the remainder of provisions of the terms and conditions shall continue in full force and effect as if the Term of Use had been executed with the invalid, illegal or unenforceable provision eliminated.
11. If there are any discrepancies in the information provided, please bring it to attention of Datanet for suitable rectification measures.



**Buy Online This Complete Book At  
Datanet India eBooks Store**

**[www.indiastatpublications.com](http://www.indiastatpublications.com)**

**or go directly at**

**[http://www.indiastatpublications.com/  
Assembly\\_factbook/Uttarakhand/Tehri\\_Garhwal/ Purola](http://www.indiastatpublications.com/Assembly_factbook/Uttarakhand/Tehri_Garhwal/Purola)**

  **indiastat**elections

ISBN : 978-93-5822-620-1



9 789358 122620 1