



Uttarakhand

Assembly Factbook™

Tehri Assembly Constituency

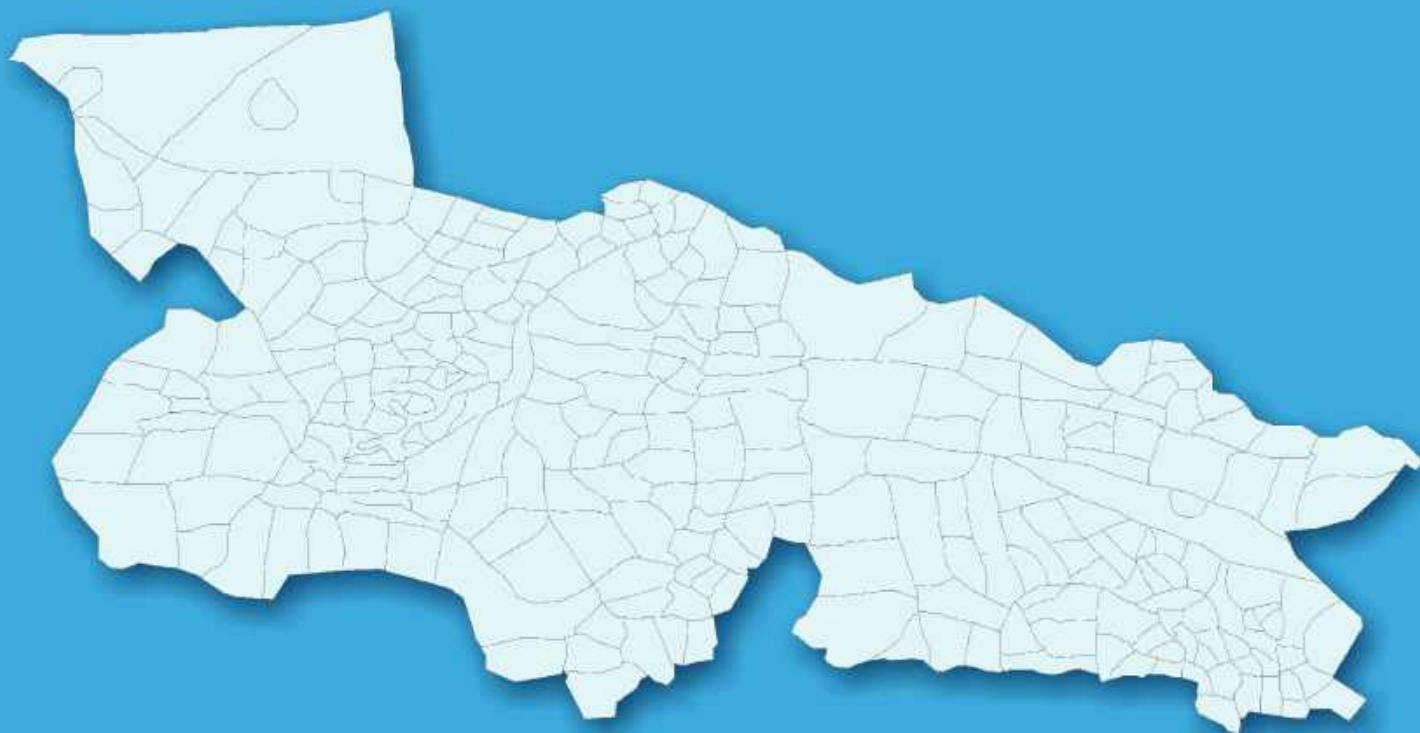


Key Electoral Data of Tehri
Assembly Constituency (Vidhan Sabha)

Uttarakhand

Assembly Factbook™

Tehri Assembly Constituency



Tehri Vidhan Sabha

Editor & Director

Dr. R.K. Thukral

Research Editor

Dr. Shafeeq Rahman

**Compiled, Researched and Published by
Datanet India Pvt. Ltd.**

D-100, 1st Floor,

Okhla Industrial Area, Phase-I,

New Delhi- 110020.

Ph.: 91-11- 43580781-84

Email : support@indiastatpublications.com

Website : www.indiastatelections.com

Online Book Store :

www.indiastatpublications.com

Report No. : AFB/UK-013-0125

ISBN : 978-93-5822-617-1

First Edition : January, 2018

Eighth Updated Edition : January, 2025

Price : Rs.11500/-

US\$ 310

© Datanet India Pvt. Ltd.

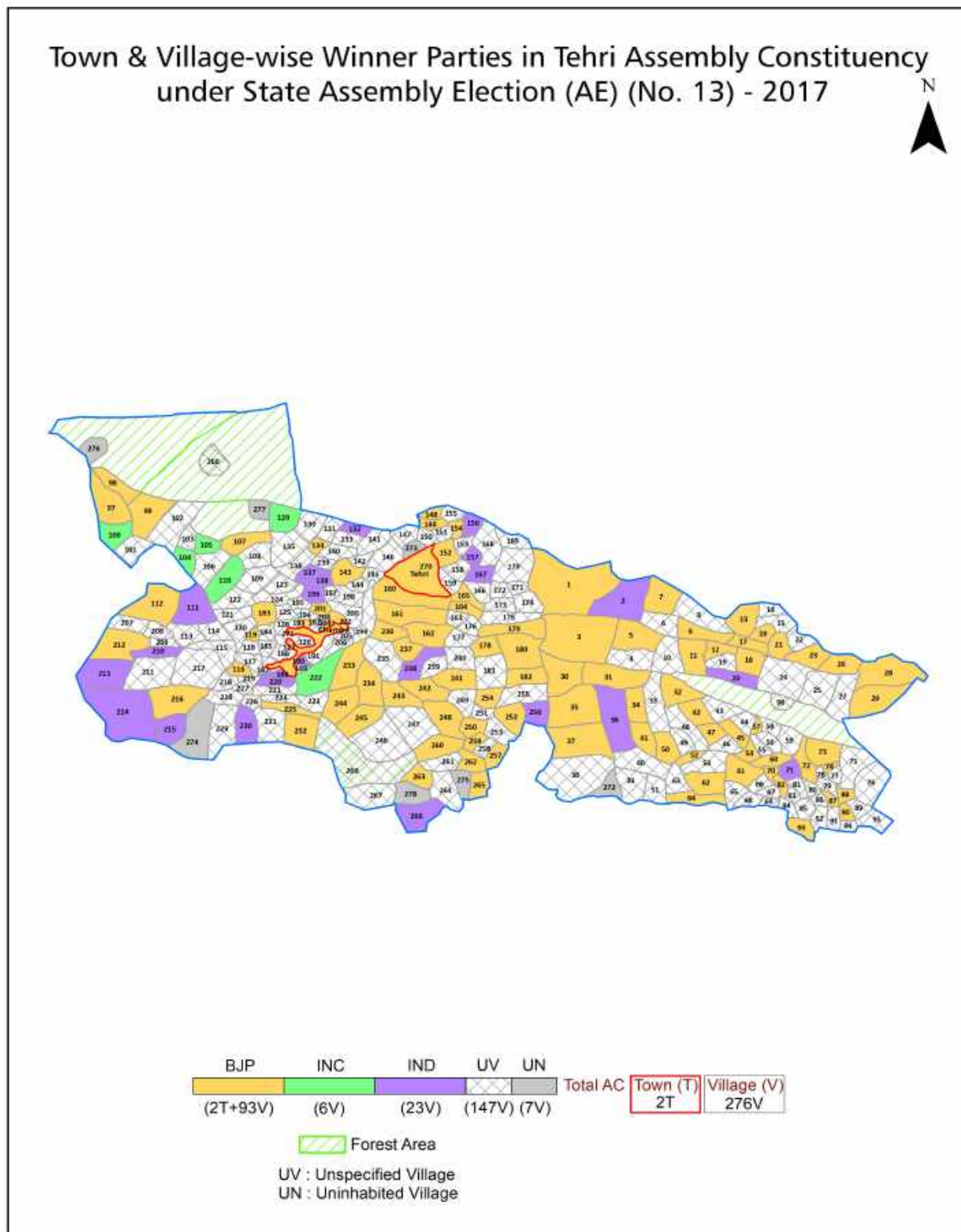
All rights reserved. No part of this book may be reproduced, stored in a retrieval system or transmitted in any form or by any means, mechanical photocopying, photographing, scanning, recording or otherwise without the prior written permission of the publisher. Please refer to Disclaimer at page no. 173 for the use of this publication.

Printed in India

Contents

No.	Particulars	Page No.
	Introduction	
1	Assembly Constituency - (Vidhan Sabha) at a Glance Features of Assembly as per Delimitation Commission of India (2008)	1-2
	Location and Political Maps	
2	Location Map Boundaries of Assembly Constituency - (Vidhan Sabha) in District Boundaries of Assembly Constituency under Parliamentary Constituency - (Lok Sabha) Town & Village-wise Winner Parties- 2024, 2022, 2019, 2017, 2014, 2012 and 2009	3-11
	Administrative Setup (2011)	
3	District Sub-district Towns Villages Inhabited Villages Uninhabited Villages Village Panchayat Intermediate Panchayat	12-26
	Demographics (2011)	
4	Population Households Rural/Urban Population Towns and Villages by Population Size Sex Ratio (Total & 0-6 Years) Religious Population Social Population Literacy Rate	27-28
	Electoral Features	
5	Important Dates of Last Elections Held Electors by Gender Service Electors Voters Voters Turnout Polling Stations & Average Number of Electors per Polling Station Electors by Age Group Present Elected Representatives	29-34
	Historical Summary Election Results	
6	Vote Share of Major Parties Winning Margin (Number & Percentage) Polarity of Parties Summary Result of Assembly Segment of Parliamentary Election 2024, 2019, 2014, 2009, 2004 and 1999 Summary Result of Assembly Elections 2022, 2017, 2012, 2007 and 2002	35-47
	Polling Station Level Election Results	
7	Name and Number of Polling Station 2024, 2022, 2019, 2017, 2014, 2012 and 2009 Polling Station-wise Electors, Voters & Voters Turnout 2024, 2022, 2019, 2017, 2014, 2012 and 2009 Polling Station wise Elections Results 2024, 2022, 2019, 2017, 2014, 2012 and 2009	48-145
8	Panchayat and Local Bodies Election Results Panchayat Result 2014 Urban Local Bodies Result 2013	146-153
	Share of Assembly Constituency	
9	Share of Assembly Constituency - (Vidhan Sabha) in State, District and Parliamentary Constituency - (Lok Sabha)	154
	Socio-Economic Amenities (2011)	
10	Access to Administrative Units Agricultural, Manufacturing and Industrial Commodities Demographic Indicators Education Health & Manpower Drinking Water Supply Sanitation Entertainment and Recreations Infrastructure Power Food Allocation Distribution and Marketing of Agriculture Commodities Infrastructure Transport and Road Infrastructure Communication Banking and Financial Services Land Use Irrigation Source	155-170
11	Abbreviation & Sources	171-172
12	Disclaimer	173

Location & Political Map



Administrative Setup

List of Village Panchayat & Intermediate Panchayat (Block) Name - 2011

Village Name	Village Panchayat Name	Intermediate Panchayat Name
Akhori Sain	Chah Gadoliya	Jakhnidhar
Andrethi	Kafelna	Jakhnidhar
Arakot	Arakot	Chamba
Arogi	Arakhot	Chamba
Badera	Sema	Jakhnidhar
Badon Gaon	Khatm	Chamba
Bagi	Bagi	Chamba
Bagi	Bagi	Chamba
Bagi Semaltiyun Ki	Baunstha	Jakhnidhar
Bainsoli Malli	Bainsoli	Jakhnidhar
Bainsoli Talli	Bainsoli	Jakhnidhar
Balma	Balma	Chamba
Bandrauli Chak Jaledimadhe	Nail	Chamba
Bangoli	Bangoli	Chamba
Bara Khet	Devari Malli	Chamba
Barkot	Barkot	Jakhnidhar
Bartyakund	Undoli	Jakhnidhar
Basal	Chapdiyal	Chamba
Baunstha	Baunstha	Jakhnidhar
Belkandi	Kanda Dangi	Jakhnidhar
Bhaintogi Sera	Khamda	Chamba
Bhandar Gaon	Bhandar Gaon	Chamba
Bhatkanda	Bhatkanda	Jakhnidhar
Bhatkanda	Migwali	Jakhnidhar
Bhatkot	Khandi	Jakhnidhar
Bhattkoti	Pata	Chamba
Bhatu Shain	Bhatu Shain	Chamba
Bhauri	Koldhear	Chamba
Bheturi	Gajada	Chamba

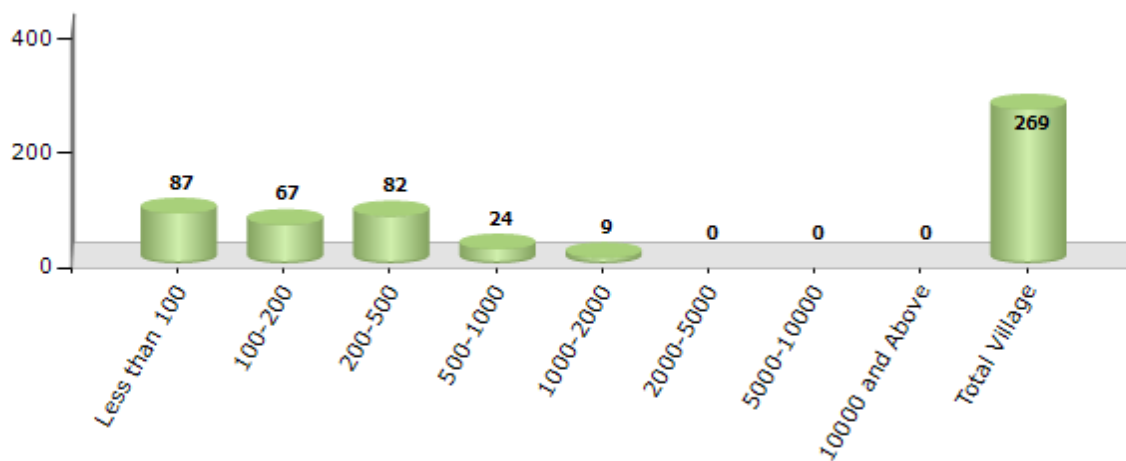
Contd....

Demographics

Number of Villages by Population Size - 2011

Less than 100	100-200	200-500	500-1000	1000-2000	2000-5000	5000-10000	10000 and Above	Total Village
87	67	82	24	9	0	0	0	269

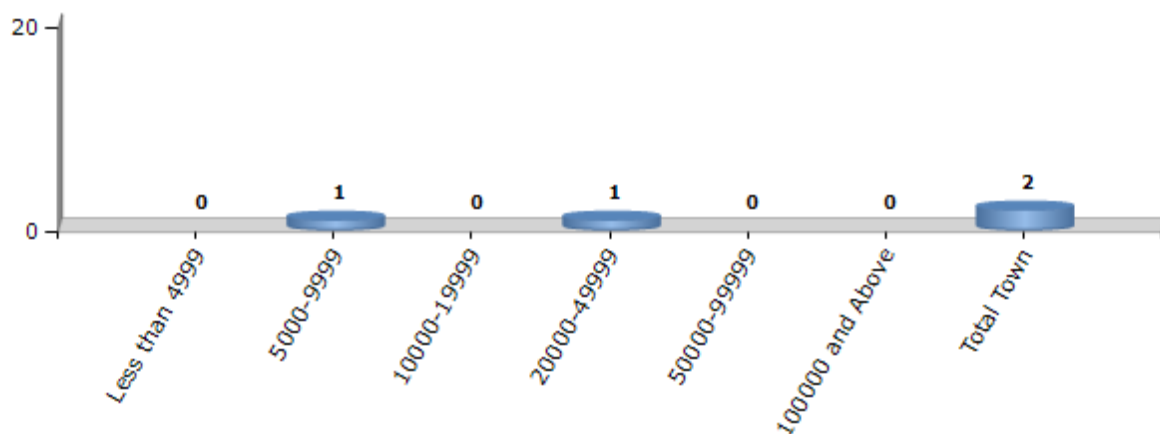
Number of Villages by Population Size - 2011



Number of Towns by Population Size - 2011

Less than 4999	5000-9999	10000-19999	20000-49999	50000-99999	100000 and Above	Total Town
0	1	0	1	0	0	2

Number of Towns by Population Size - 2011

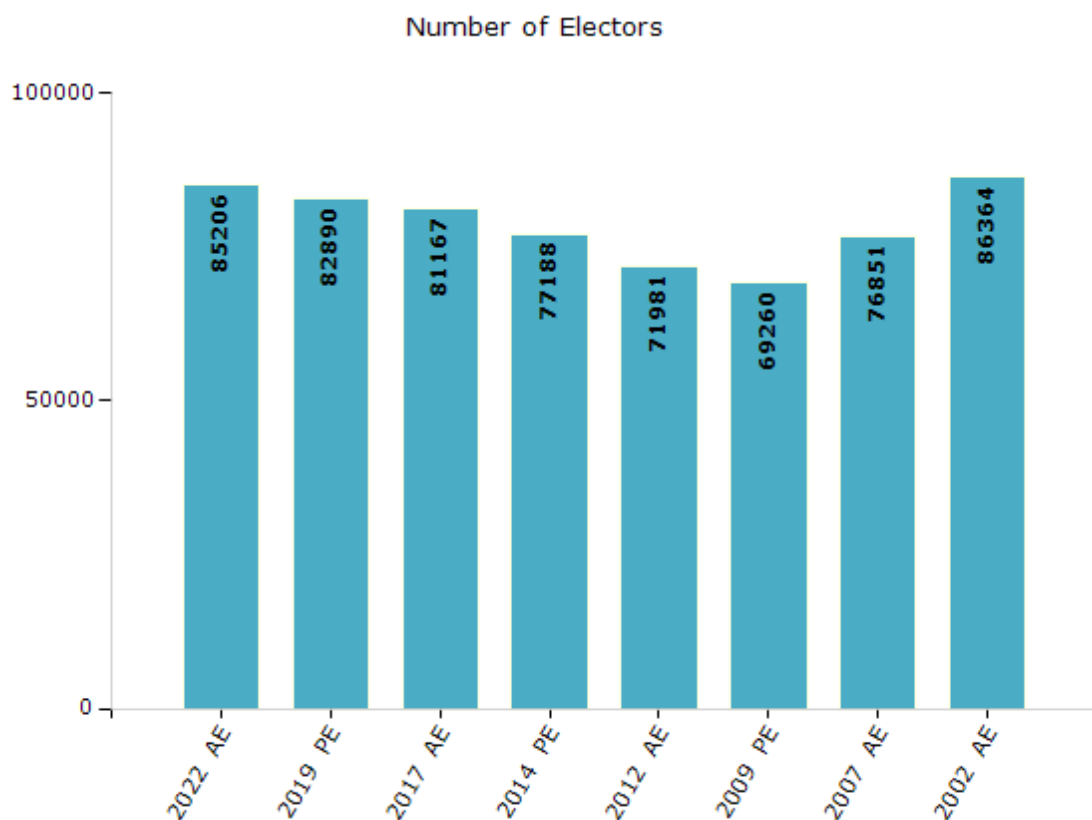


Electoral Features

Electors by Male & Female

Year	Male	Female	Others	Total
2022 AE	44352	40854	0	85206
2019 PE	43249	39641	0	82890
2017 AE	42307	38859	1	81167
2014 PE	39967	37221	0	77188
2012 AE	37160	34821	0	71981

Year	Male	Female	Others	Total
2009 PE	34724	34536	-	69260
2007 AE	37459	39392	-	76851
2004 PE	-	-	-	-
2002 AE	44995	41369	-	86364

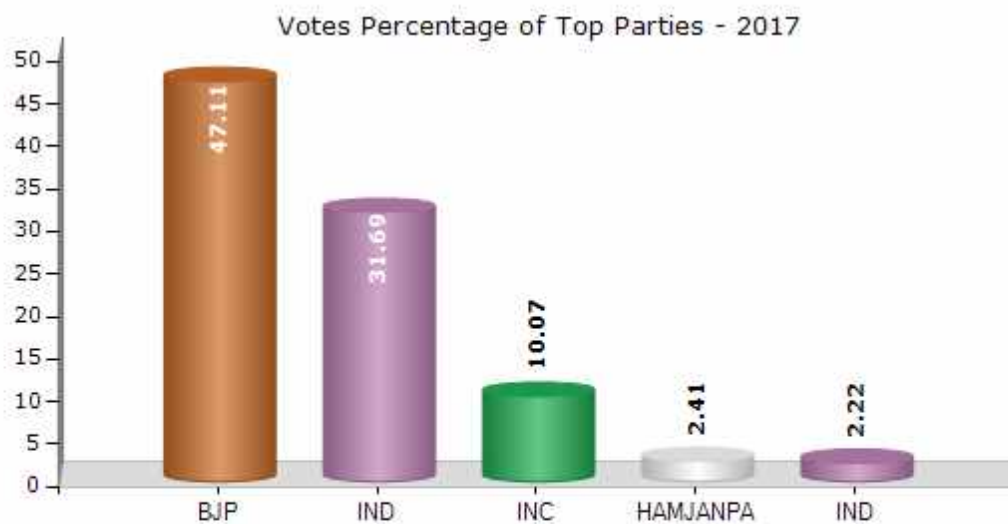


Note : AE : Assembly Election, PE : Assembly Segment of Parliamentary Election

Historical Summary Election Results

Summary Result of Assembly Election - 2017

Candidate Name	Party	Votes	Votes %
Dhan Singh Negi	BJP	20896	47.11
Dinesh Dhanai	IND	14056	31.69
Narendra Chand Ramola	INC	4466	10.07
Sushil Chandra Bahuguna	HAMJANPA	1067	2.41
Sanjay Kumar Maithani	IND	984	2.22
Trilok Singh Negi	IND	722	1.63
Gopal Dutt Chamoli	IND	585	1.32
Budhi Singh Pundir	UKKD	507	1.14
Bhagwan Singh Rana	CPM	285	0.64
Ganesh Kudiyal	IND	180	0.41
Somi Lal	BSP	133	0.3
	NOTA	476	1.07



Polling Station Level Election Results

Number and Name of Polling Stations (PS) (2022)

Number of Polling Stations	Name of Polling Stations	Number of Polling Stations	Name of Polling Stations
1	Khuret	22	Chopdiyal (Birkot)
2	Pujaldi (Motnadhar)	23	Sabli
3	Nagrajadhar (Bamund)	24	Than
4	Thangdhar (Saur)	25	Dikhol Gaon
5	Jaripani saur Satyadevi (East Part)	26	Manjyur Gaon
6	Jaripani saur Satyadevi (West Part)	27	Chamba
7	Chopriyal Gaon	28	Chamba Talla
8	Silogi	29	Chamba (East Part)
9	Gunogi (Bamund)	30	Chamba (East Part)
10	Swadi	31	Chamba (West Part)
11	Nagdev Pathald (kudiyal Gaon)	32	Chamba
12	Baheda (Devri)	33	Bhandar Gaon
13	Jardhar Gaon	34	Chamba (Wast Part)
14	Jardhar Gaon	35	Bagasudhar (Mudiya Gaon)
15	Tipral Gaon	36	Gunogi (Uadaykot)
16	Mathiyan Gaon	37	Shrikot (Tangala)
17	Bagi	38	Dharkot
18	Patudi	39	Devtadhar (kot)
19	Kataldi	40	Devtadhar (Kot)
20	Nagni (Palas)	41	Aarakot
21	Narangi	42	Kanthar Gaon

Contd....

Polling Station Level Election Results

Polling Station-wise Votes Secured by Overall Top Five Parties in Tehri Assembly in Assembly Election (AE) under Tehri Garhwal Parliamentary Constituency in Uttarakhand (2022)

No. of Polling Station	Winner - Kishore Upadhyay (BJP)	Runner-up - Dinesh Dhanai (UJPA)	3rd - Dhan Singh Negi (INC)	4th - Trilok Singh Negi (AAP)	5th - Urmila (UKKD)	NOTA	Other	Total Votes Secured
36	85	166	49	4	1	2	5	312
37	131	96	9	6	0	2	2	246
38	242	151	45	2	4	3	3	450
39	203	168	28	3	0	6	4	412
40	140	117	26	0	1	2	0	286
41	66	185	128	2	2	0	0	383
42	237	278	34	3	1	1	3	557
43	131	142	10	1	0	0	2	286
44	190	142	6	0	2	1	1	342
45	189	153	11	2	0	2	1	358
46	189	66	6	1	1	4	0	267
47	108	86	27	3	0	0	0	224
48	60	65	8	2	0	0	0	135
49	231	280	100	5	1	2	4	623
50	177	79	27	2	1	3	1	290
51	148	181	62	0	0	4	2	397
52	121	134	17	1	0	3	3	279
53	237	94	21	1	0	1	1	355
54	104	67	33	1	0	2	2	209
55	92	73	3	1	1	1	0	171
56	83	78	43	3	2	4	0	213
57	82	47	0	1	0	3	0	133
58	55	117	41	1	2	1	0	217
59	41	44	6	3	0	4	3	101
60	95	142	33	2	3	5	3	283
61	55	41	42	7	0	3	1	149
62	94	81	34	1	1	0	0	211
63	89	118	62	5	2	2	4	282
64	87	84	20	3	1	5	0	200
65	130	96	32	2	0	1	1	262
66	71	113	36	11	2	3	2	238
67	129	45	11	1	0	0	1	187
68	36	67	11	0	1	2	5	122
69	100	116	16	3	2	8	3	248
70	127	128	57	8	0	5	6	331

Contd....

Polling Station Level Election Results

Winner, Runner-up and 3rd Party Position & Winning Margin According to Polling Stations in Tehri Assembly in Assembly Election (AE) under Tehri Garhwal Parliamentary Constituency in Uttarakhand (2022)

Polling Station Number	Winner Party	Winner Votes (%)	Runner-up Party	Runner-up Votes (%)	Winning Margin Votes (%)	Third Party	Third Party Votes (%)	Other Votes (%)
71	BJP	158 (58.96)	UJPA	78 (29.1)	80 (29.86)	INC	28 (10.45)	4 (1.49)
72	BJP	138 (88.46)	UJPA	12 (7.69)	126 (80.77)	INC	4 (2.56)	2 (1.28)
73	UJPA	162 (39.61)	BJP	136 (33.25)	26 (6.36)	INC	90 (22)	21 (5.13)
74	BJP	246 (47.49)	UJPA	160 (30.89)	86 (16.6)	INC	88 (16.99)	24 (4.63)
75	UJPA	228 (48.93)	BJP	142 (30.47)	86 (18.46)	INC	74 (15.88)	22 (4.72)
76	BJP	100 (51.81)	INC	56 (29.02)	44 (22.79)	UJPA	28 (14.51)	9 (4.66)
77	BJP	87 (48.33)	UJPA	48 (26.67)	39 (21.66)	INC	33 (18.33)	12 (6.67)
78	UJPA	113 (44.84)	BJP	111 (44.05)	2 (0.79)	INC	18 (7.14)	10 (3.97)
79	UJPA	168 (47.59)	BJP	115 (32.58)	53 (15.01)	INC	64 (18.13)	6 (1.7)
80	UJPA	140 (50.91)	BJP	96 (34.91)	44 (16)	INC	37 (13.45)	2 (0.73)
81	UJPA	86 (38.05)	BJP	68 (30.09)	18 (7.96)	INC	51 (22.57)	21 (9.29)
82	UJPA	254 (44.8)	BJP	223 (39.33)	31 (5.47)	AAP	54 (9.52)	36 (6.35)
83	UJPA	109 (61.93)	BJP	52 (29.55)	57 (32.38)	INC	10 (5.68)	5 (2.84)
84	UJPA	321 (62.7)	BJP	128 (25)	193 (37.7)	INC	46 (8.98)	17 (3.32)
85	UJPA	137 (51.7)	BJP	84 (31.7)	53 (20)	INC	25 (9.43)	19 (7.17)
86	UJPA	222 (48.9)	BJP	175 (38.55)	47 (10.35)	INC	47 (10.35)	10 (2.2)
87	BJP	155 (61.26)	UJPA	70 (27.67)	85 (33.59)	INC	20 (7.91)	8 (3.16)
88	BJP	146 (60.83)	UJPA	79 (32.92)	67 (27.91)	AAP	10 (4.17)	5 (2.08)
89	UJPA	220 (52.26)	BJP	131 (31.12)	89 (21.14)	INC	32 (7.6)	38 (9.03)
90	UJPA	296 (50.17)	BJP	161 (27.29)	135 (22.88)	INC	91 (15.42)	42 (7.12)
91	UJPA	285 (43.71)	BJP	237 (36.35)	48 (7.36)	INC	65 (9.97)	65 (9.97)
92	UJPA	165 (49.7)	BJP	118 (35.54)	47 (14.16)	INC	29 (8.73)	20 (6.02)
93	UJPA	237 (49.07)	BJP	208 (43.06)	29 (6.01)	INC	29 (6)	9 (1.86)
94	UJPA	204 (54.84)	BJP	132 (35.48)	72 (19.36)	INC	34 (9.14)	2 (0.54)
95	UJPA	179 (47.61)	BJP	146 (38.83)	33 (8.78)	INC	30 (7.98)	21 (5.59)
96	UJPA	204 (45.23)	BJP	173 (38.36)	31 (6.87)	INC	30 (6.65)	44 (9.76)
97	UJPA	121 (50.21)	BJP	71 (29.46)	50 (20.75)	INC	38 (15.77)	11 (4.56)
98	UJPA	130 (45.14)	BJP	110 (38.19)	20 (6.95)	INC	37 (12.85)	11 (3.82)
99	UJPA	201 (55.37)	BJP	120 (33.06)	81 (22.31)	INC	34 (9.37)	8 (2.2)
100	UJPA	249 (50.3)	BJP	201 (40.61)	48 (9.69)	INC	37 (7.47)	8 (1.62)
101	UJPA	152 (47.65)	BJP	133 (41.69)	19 (5.96)	INC	27 (8.46)	7 (2.19)
102	UJPA	188 (55.46)	BJP	115 (33.92)	73 (21.54)	INC	28 (8.26)	8 (2.36)
103	BJP	174 (52.57)	UJPA	116 (35.05)	58 (17.52)	INC	30 (9.06)	11 (3.32)
104	BJP	108 (42.02)	INC	77 (29.96)	31 (12.06)	UJPA	54 (21.01)	18 (7)
105	BJP	118 (53.15)	UJPA	84 (37.84)	34 (15.31)	INC	10 (4.5)	10 (4.5)

Contd....

Socio-Economic Amenities - Rural

Access to Education Facilities

Particulars	Number of Villages (% of Population)				
	Available	Not Available	If Not Available (Distance of Nearest Facility)		
			A	B	C
Govt. Primary School	197 (91)	72 (9)	58 (8)	1 (0)	6 (1)
Private Primary School	20 (14)	249 (86)	0 (0)	0 (0)	0 (0)
Govt. Middle School	133 (68)	136 (32)	105 (25)	11 (4)	13 (2)
Private Middle School	14 (8)	255 (92)	0 (0)	0 (0)	0 (0)
Govt. Secondary School	110 (54)	159 (46)	95 (28)	39 (13)	18 (4)
Private Secondary School	8 (3)	261 (97)	0 (0)	0 (0)	0 (0)
Govt. Senior Secondary School	106 (52)	163 (48)	90 (29)	43 (13)	23 (5)
Private Senior Secondary School	7 (1)	262 (99)	0 (0)	0 (0)	0 (0)
Govt. Arts and Science Degree College	0 (0)	269 (100)	8 (8)	40 (14)	219 (76)
Private Arts and Science Degree College	0 (0)	269 (100)	0 (0)	0 (0)	2 (1)
Govt. Engineering College	0 (0)	269 (100)	1 (0)	1 (0)	113 (44)
Private Engineering College	0 (0)	269 (100)	0 (0)	0 (0)	154 (55)
Govt. Medicine College	0 (0)	269 (100)	9 (3)	3 (3)	120 (46)
Private Medicine College	0 (0)	269 (100)	0 (0)	0 (0)	137 (48)
Govt. Management Institute	0 (0)	269 (100)	0 (0)	0 (0)	0 (0)
Private Management Institute	0 (0)	269 (100)	0 (0)	0 (0)	269 (100)
Govt. Polytechnic	0 (0)	269 (100)	25 (8)	48 (21)	196 (71)
Private Polytechnic	0 (0)	269 (100)	0 (0)	0 (0)	0 (0)
Govt. Vocational Training School/ITI	1 (0)	268 (100)	39 (13)	56 (20)	172 (66)
Private Vocational Training School/ITI	0 (0)	269 (100)	0 (0)	0 (0)	1 (0)
Govt. Non Formal Training Centre	0 (0)	269 (100)	0 (0)	0 (0)	269 (100)
Private Non Formal Training Centre	0 (0)	269 (100)	0 (0)	0 (0)	0 (0)
Govt. School For Disabled	0 (0)	269 (100)	0 (0)	0 (0)	269 (100)
Private School For Disabled	0 (0)	269 (100)	0 (0)	0 (0)	0 (0)
Government Others	0 (0)	269 (100)	8 (8)	40 (14)	219 (76)
Private Others	0 (0)	269 (100)	0 (0)	0 (0)	2 (1)

Note : Distance A : Less than 5 km; B : Between 5-10 km; C : 10+ km.; Source : Data Analysis is based on 2011 Census.

DISCLAIMER

The Terms of Use and Disclaimer of Datanet India Private Limited (hereinafter referred to as "Datanet") for use of this analysis report of **Tehri Assembly Constituency (Tehri Vidhan Sabha)** :-

1. **Assembly Factbook™** is a Registered Trade Mark owned by Datanet.
2. All the maps are sketched and graphical representation only and have not been drawn to the scale and also not to represent the actual geographical area or boundary of the unit.
3. The data for the aforesaid analysis is based on authentic sources and has been culled from the various publications of Census, CSO and NSSO for district and block level data, various central and state government departments, Central & State Elections Commissions and the concerned Returning Officers' releases, Electoral Rolls, Election results and allied publications, internal assessment, surveys, estimates and analysis. Therefore, certain adjustment of data at micro level may have been done to arrive closer to the macro data.
4. Data have been provided on an "As Is" and "As AVAILABLE" basis
5. The colours shown in the maps or diagram and charts of a particular party, alliance or AC are indicative and do not represent them.
6. This publication which includes maps, sheets, graphs and data would be the property under copyright of Datanet only. The user may use these for its internal study, analysis and research purposes. It's public display, re-selling or any commercial uses by the user are not allowed.
7. Datanet has taken due care and caution in compilation and processing of data and allied information, but does not guarantee the accuracy, adequacy or completeness of any information/analysis and will be not responsible for any errors or omissions or for the results obtained from the use of such information/analysis.
8. All the contents for the publication have been culled from various authentic sources and Datanet reasonably believes such sources to be reliable, but does not make any representations, express or implied as to the accuracy or fitness of use of such information. The information or contents of the information/analysis do not constitute advice and should not be relied upon in making (or refraining from making) any decision. Any reliance placed upon the information provided by Datanet is the sole responsibility and strictly at the user's risk.
9. In no event will Datanet be liable for any damages (including, without limitation, damages for loss of business projects, or loss of profits) arising in contract, tort or otherwise from the use of or inability to use any of its contents, or from any action taken (or refrained from being taken) as a result of using the analysis or any of its contents. Datanet its directors, owners, editors, officials, employees, distributor and agents or any associate will not be liable for any errors in the information contained or any consequences arising from the use of the contents of the provided information/analysis.
10. If any provision of these terms and conditions is held invalid or illegal or unenforceable for any reason by any court of competent jurisdiction, such provision shall be severed and the remainder of provisions of the terms and conditions shall continue in full force and effect as if the Term of Use had been executed with the invalid, illegal or unenforceable provision eliminated.
11. If there are any discrepancies in the information provided, please bring it to attention of Datanet for suitable rectification measures.

**Buy Online This Complete Book At
Datanet India eBooks Store**

www.indiastatpublications.com

or go directly at

**[http://www.indiastatpublications.com/
Assembly_factbook/Uttarakhand/Tehri_Garhwal/ Tehri](http://www.indiastatpublications.com/Assembly_factbook/Uttarakhand/Tehri_Garhwal/Tehri)**

 **indiastat**elections

ISBN : 978-93-5822-617-1



9 789358 226171