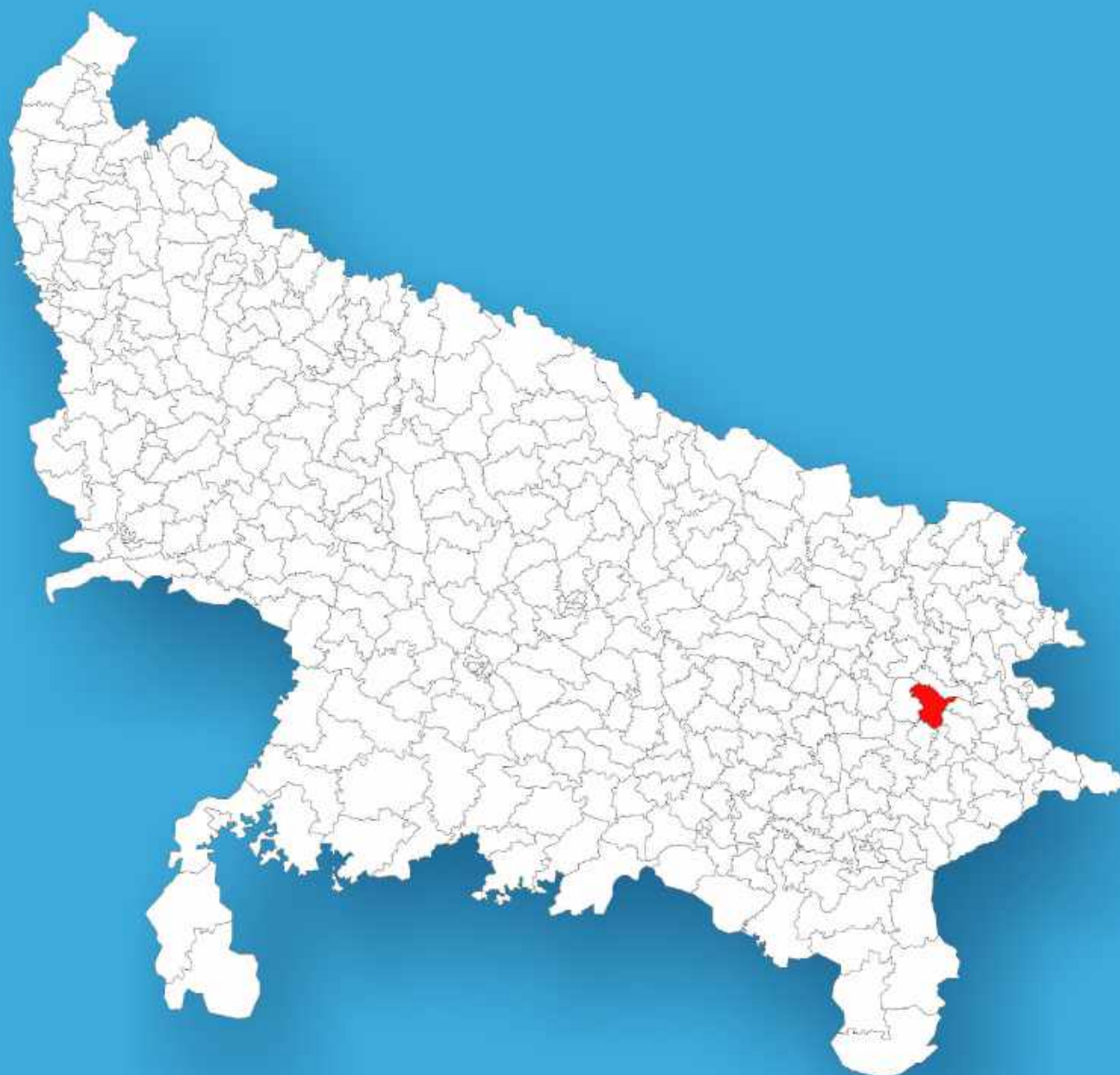




Uttar Pradesh

Assembly Factbook™

Sagri Assembly Constituency



Key Electoral Data of Sagri
Assembly Constituency (Vidhan Sabha)

Uttar Pradesh

Assembly Factbook™

Sagri Assembly Constituency



Sagri Vidhan Sabha

Editor & Director

Dr. R.K. Thukral

Research Editor

Dr. Shafeeq Rahman

**Compiled, Researched and Published by
Datanet India Pvt. Ltd.**

D-100, 1st Floor,

Okhla Industrial Area, Phase-I,

New Delhi- 110020.

Ph.: 91-11- 43580781-84

Email : support@indiastatpublications.com

Website : www.indiastatelections.com

Online Book Store :

www.indiastatpublications.com

Report No. : AFB/UP-345-0125

ISBN : 978-93-5905-900-6

First Edition : January, 2018

Eighth Updated Edition : January, 2025

Price : Rs.11500/-

US\$ 310

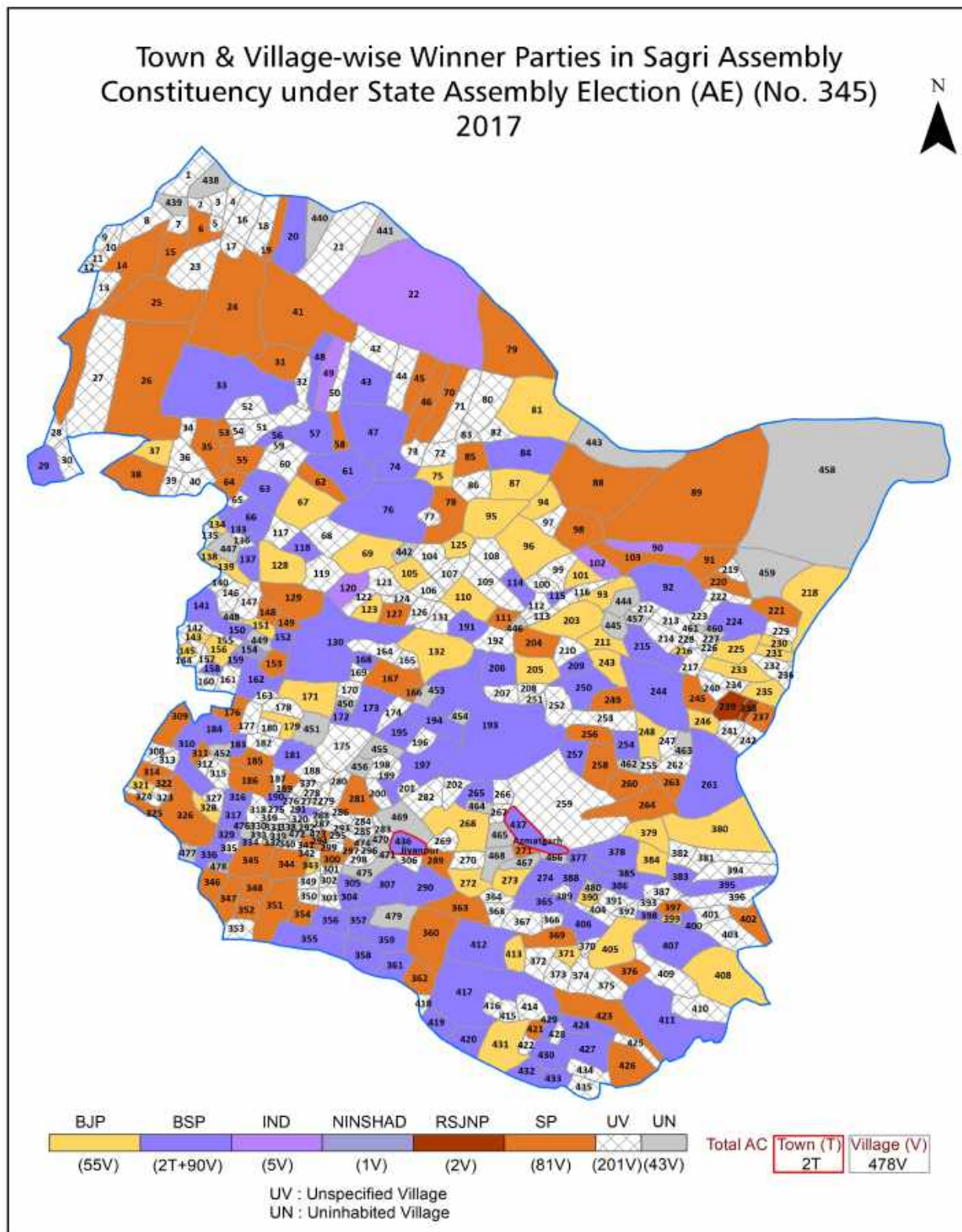
© Datanet India Pvt. Ltd.

All rights reserved. No part of this book may be reproduced, stored in a retrieval system or transmitted in any form or by any means, mechanical photocopying, photographing, scanning, recording or otherwise without the prior written permission of the publisher. Please refer to Disclaimer at page no. 316 for the use of this publication.

Printed in India

No.	Particulars	Page No.
	Introduction	
1	Assembly Constituency - (Vidhan Sabha) at a Glance Features of Assembly as per Delimitation Commission of India (2008)	1-2
	Location and Political Maps	
2	Location Map Boundaries of Assembly Constituency - (Vidhan Sabha) in District Boundaries of Assembly Constituency under Parliamentary Constituency - (Lok Sabha) Town & Village-wise Winner Parties-2024, 2022, 2019, 2017, 2014, 2012 and 2009	3-11
	Administrative Setup (2011)	
3	District Sub-district Towns Villages Inhabited Villages Uninhabited Villages Village Panchayat Intermediate Panchayat	12-33
	Demographics (2011)	
4	Population Households Rural/Urban Population Towns and Villages by Population Size Sex Ratio (Total & 0-6 Years) Religious Population Social Population Literacy Rate	34-35
	Electoral Features	
5	Important Dates of Last Elections Held Electors by Gender Service Electors Voters Voters Turnout Polling Stations & Average Number of Electors per Polling Station Electors by Age Group Present Elected Representatives	36-41
	Historical Summary Election Results	
6	Vote Share of Major Parties Winning Margin (Number & Percentage) Polarity of Parties Summary Result of Assembly Segment of Parliamentary Election 2024, 2019, 2014, 2009, 2004 and 1999 Summary Result of Assembly Elections 2022, 2017, 2012, 2007, 2002, 1996, 1993, 1991, 1989, 1985, 1980, 1977, 1974, 1969, 1967, 1962, 1957 and 1952	42-68
	Polling Station Level Election Results	
7	Name and Number of Polling Station 2024, 2022, 2019, 2017, 2014, 2012 and 2009 Polling Station-wise Electors, Voters & Voters Turnout 2024, 2022, 2019, 2017, 2014, 2012 and 2009 Polling Station wise Elections Results 2024, 2022, 2019, 2017, 2014, 2012 and 2009	69-276
8	Panchayat and Local Bodies Election Results Panchayat Result 2015 Urban Local Bodies Result 2012	277-294
	Share of Assembly Constituency	
9	Share of Assembly Constituency - (Vidhan Sabha) in State, District and Parliamentary Constituency - (Lok Sabha)	295
	Socio-Economic Amenities (2011)	
10	Access to Administrative Units Agricultural, Manufacturing and Industrial Commodities Demographic Indicators Education Health & Manpower Drinking Water Supply Sanitation Entertainment and Recreations Infrastructure Power Food Allocation Distribution and Marketing of Agriculture Commodities Infrastructure Transport and Road Infrastructure Communication Banking and Financial Services Land Use Irrigation Source	297-311
11	Abbreviation & Sources	312-315
12	Disclaimer	316

Location & Political Map



Administrative Setup

List of Village Panchayat & Intermediate Panchayat (Block) Name - 2011

Village Name	Village Panchayat Name	Intermediate Panchayat Name
Abbhan Patti	Manikpur	Haraiya
Ahirauli	Ramgarh	Haraiya
Ahirauli	Kadipur	Azmatgarh
Ahirauli	Rampur	Azmatgarh
Ainpur	Chhattapur	Azmatgarh
Ajgara	Azagara Kotha	Azmatgarh
Ajgara Magarvi	Azagara Magar Bairi	Haraiya
Ajgara Mashrki	Ajgar	Haraiya
Ajuwa	Bramhauli Dhyam	Haraiya
Akhaipur	Pihar	Haraiya
Akhipur	Devpur Kamalpur	Azmatgarh
Alampur	Samundpur	Azmatgarh
Aliyabad Katai	Aliyabad Katai	Azmatgarh
Allipur	Allipur	Azmatgarh
Amloni	Jamin Muhammadpur	Azmatgarh
Amma Aima	Beni Baramhauli	Azmatgarh
Amuwari Narayanpur	Amuwari Narayanpur	Azmatgarh
Anantpur	Karaila	Haraiya
Anjan Shaheed	Anjan Shahid	Azmatgarh
Araji Ajgara Magarvi	Araji	Haraiya
Araji Ajgara Mashrki	Araji	Haraiya
Arazi Dewara Karkhiya	Arazi Dewara Karkhiya	Haraiya
Arazi Dewara Nainijor	Ande Naini Jor	Haraiya
Arazi Navbarar Devara Karkhiya	Arazi Nowrar Karkhiyakita 1	Haraiya
Arazi Navbarar Karkhiya Kitaii	Arazi Dewara Karkhiya	Haraiya
Arazi Navbararkarkhiya Kitaii	Dewara Achal Singh	Haraiya
Arifpur	Banaura Mainath Patti	Azmatgarh
Atar Kachha	Atar Kachha	Azmatgarh
Athnaru	Sukhamdatta Nagar	Azmatgarh

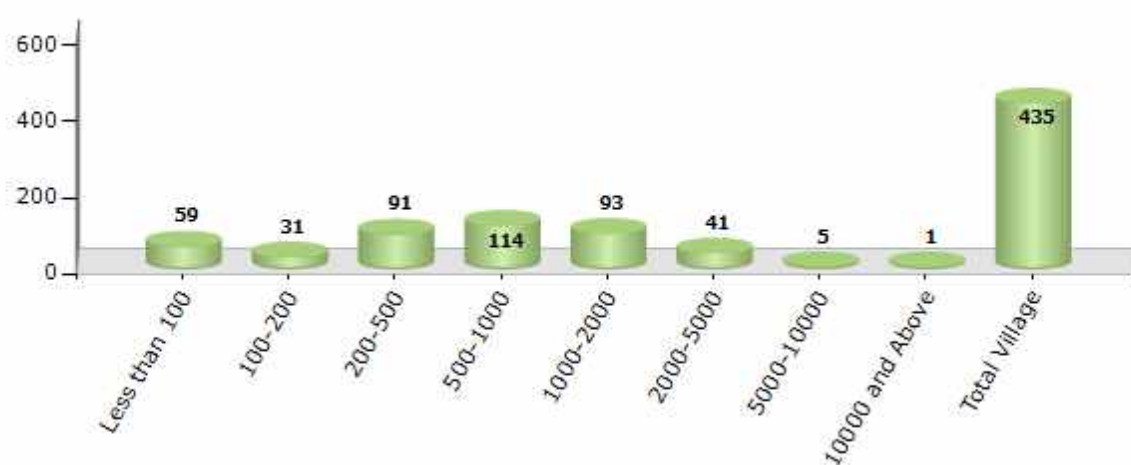
Contd....

Demographics

Number of Villages by Population Size - 2011

Less than 100	100-200	200-500	500-1000	1000-2000	2000-5000	5000-10000	10000 and Above	Total Village
59	31	91	114	93	41	5	1	435

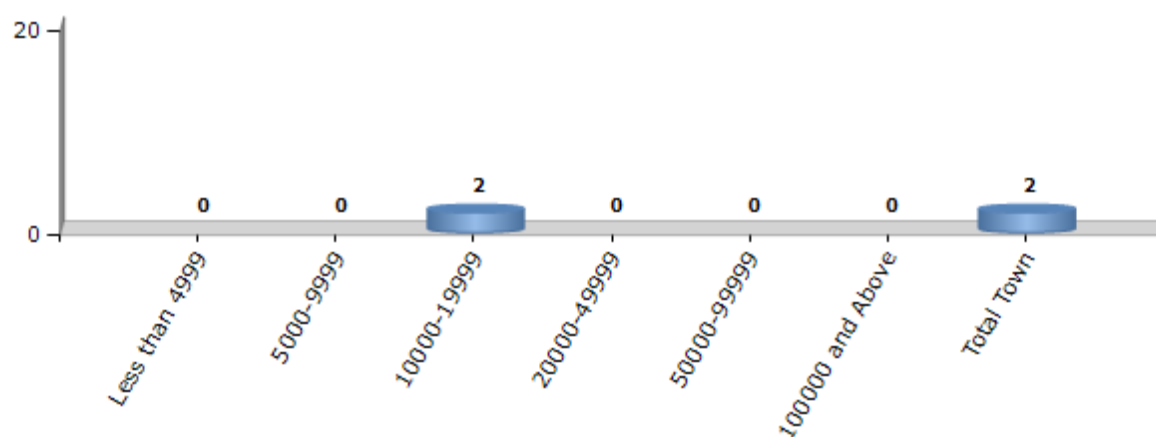
Number of Villages by Population Size - 2011



Number of Towns by Population Size - 2011

Less than 4999	5000-9999	10000-19999	20000-49999	50000-99999	100000 and Above	Total Town
0	0	2	0	0	0	2

Number of Towns by Population Size - 2011



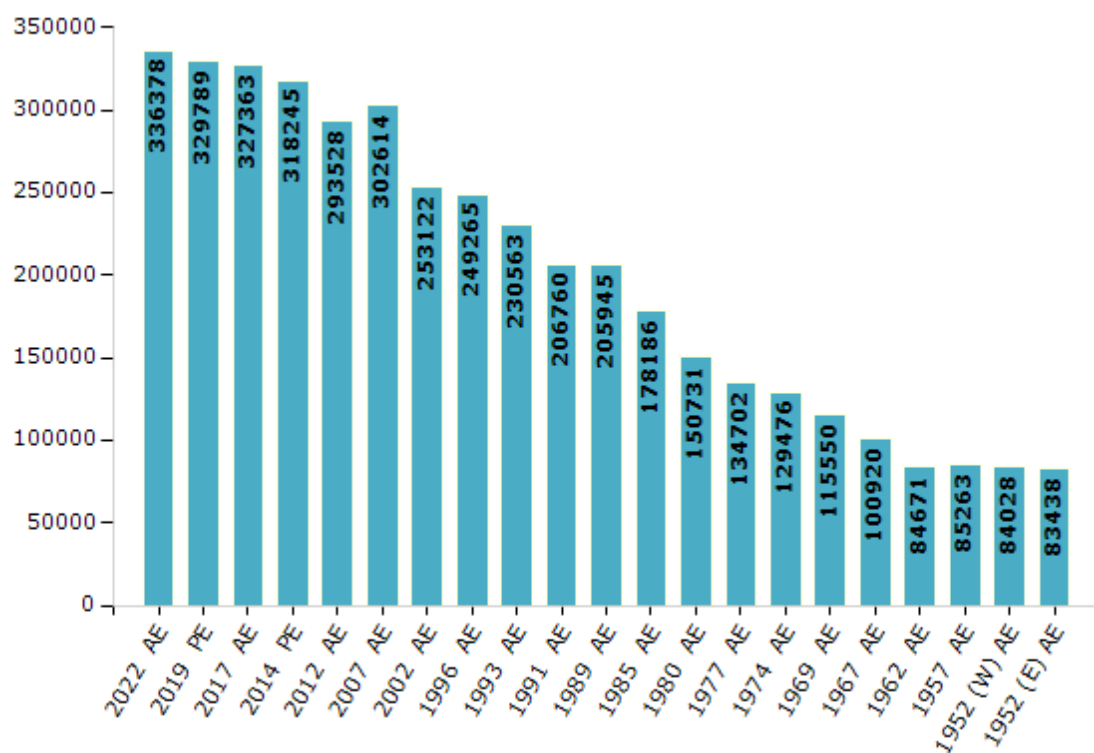
Electoral Features

Electors by Male & Female

Year	Male	Female	Others	Total
2022 AE	179806	156560	12	336378
2019 PE	180472	149313	4	329789
2017 AE	181226	146134	3	327363
2014 PE	175651	142574	20	318245
2012 AE	161240	132269	19	293528
2009 PE	-	-	-	-
2007 AE	162469	140145	-	302614
2004 PE	-	-	-	-
2002 AE	138201	114921	-	253122
1999 PE	-	-	-	-
1996 AE	136723	112542	-	249265
1993 AE	127998	102565	-	230563

Year	Male	Female	Others	Total
1991 AE	114809	91951	-	206760
1989 AE	123575	82370	-	205945
1985 AE	98480	79706	-	178186
1980 AE	82643	68088	-	150731
1977 AE	73846	60856	-	134702
1974 AE	71161	58315	-	129476
1969 AE	60550	55000	-	115550
1967 AE	-	-	-	100920
1962 AE	-	-	-	84671
1957 AE	-	-	-	85263
1952 (W) AE	-	-	-	84028
1952 (E) AE	-	-	-	83438

Number of Electors



Note : AE : Assembly Election, PE : Assembly Segment of Parliamentary Election, (W) : Sagri West, (E) : Sagri East

Historical Summary Election Results

Summary Result of Assembly Election - 2017

Candidate Name	Party	Votes	Votes %
Bandana Singh	BSP	62203	34.73
Jairam Patel	SP	56728	31.67
Devendra Kumar Singh	BJP	40786	22.77
Gopal Nishad	IND	5876	3.28
Ritu Khare	NINSHAD	2427	1.35
Vijay Kumar Gond	IND	1716	0.96
Sanjay Rai	RSJNP	1515	0.85
Anurag Yadav	NCP	1474	0.82
Shreekant Singh	CPI	1269	0.71
Daya Shankar Bhatt	RLD	982	0.55
Ranajeet Singh Alias Kaviji	AD	581	0.32
Dhanesh Yadav	LD	544	0.3
Ajay Kumar Gautam	IND	539	0.3
Awadhesh Gautam	PMHP	539	0.3
Rajesh Kumar Yadav	BMUP	527	0.29
Radhey Shyam Yadav	HAPA	455	0.25
	NOTA	964	0.54

Polling Station Level Election Results

Number and Name of Polling Stations (PS) (2022)

Number of Polling Stations	Name of Polling Stations	Number of Polling Stations	Name of Polling Stations
1	Patel U. M. V. Urdhia R.N.-1	22	P. M. V. Dhunsinghpur R.N.-4
2	Patel U. M. V. Urdhia R.N.-2	23	P. V. Chandpatti R.N.-1
3	P. V. Roshanganj R.N.-1	24	P. V. Chandpatti R.N.-2
4	P. V. Roshanganj R.N.-2	25	Jauhar J. H. S. Chandpatti R.N.-1
5	P. M. V. Roshanganj	26	Jauhar J. H. S. Chandpatti R.N.-2
6	P. V. Haidrabad	27	Jauhar J. H. S. Chandpatti R.N.-3
7	P.M.V. Haidrabad R.N.-1	28	Jauhar J. H. S. Chandpatti R.N.-4
8	P.M.V. Haidrabad R.N.-2	29	P. V. Devariya
9	P.M.V. Haidrabad R.N.-3	30	P. V. Usari
10	P. V. Araji Devara Karakhiya R.N.-1	31	P. V. Batan
11	P. V. Araji Devara Karakhiya R.N.-2	32	Islamiya P. V. Karmaini R.N.-1
12	P. V. Araji Devara Karakhiya R.N.-3	33	Islamiya P. V. Karmaini R.N.-2
13	P. V. Araji Devara Karakhiya R.N.-4	34	Islamiya P. V. Karmaini R.N.-3
14	P. V. Araji Devara Karakhiya R.N.-5	35	P. V. Pakkhopur
15	P. V. Araji Devara Karakhiya R.N.-6	36	J. H. S. Raunapar R.N.-1
16	Subash I. C. Karakhiya Rustam Sarai R.N.-1	37	J. H. S. Raunapar R.N.-2
17	Subash I. C. Karakhiya Rustam Sarai R.N.-2	38	J. H. S. Raunapar R.N.-3
18	Subash I. C. Karakhiya Rustam Sarai R.N.-3	39	J. H. S. Raunapar R.N.-4
19	P. M. V. Dhunsinghpur R.N.-1	40	P. V. Turkauli R.N.-1
20	P. M. V. Dhunsinghpur R.N.-2	41	P. V. Turkauli R.N.-2
21	P. M. V. Dhunsinghpur R.N.-3	42	J. H. S. Jamuvari R.N.-1

Contd....

Polling Station Level Election Results

Polling Station-wise Votes Secured by Overall Top Five Parties in Sagri Assembly in Assembly Election (AE) under Azamgarh Parliamentary Constituency in Uttar Pradesh (2022)

Number of Polling Station	Winner - Hriday Narayan Singh Patel (SP)	Runner-up - Bandana Singh (BJP)	3rd - Shankar Yadav (BSP)	4th - Pankaj Maurya (JANADIP)	5th - Rana Khatoon (INC)	NOTA	Other	Total Votes Secured
36	160	298	46	15	4	2	8	533
37	143	199	162	1	6	6	15	532
38	178	173	102	0	0	2	13	468
39	47	103	202	0	3	4	12	371
40	195	57	69	11	5	0	6	343
41	223	70	66	0	2	0	16	377
42	59	96	210	0	2	0	11	378
43	106	225	52	0	4	3	14	404
44	111	123	88	0	5	5	6	338
45	127	108	315	7	7	4	21	589
46	127	151	256	2	7	3	10	556
47	137	116	226	0	4	4	26	513
48	357	98	51	0	3	10	15	534
49	256	29	80	0	2	1	6	374
50	267	33	63	4	3	5	11	386
51	371	30	42	1	1	1	3	449
52	169	45	270	7	0	1	18	510
53	475	28	71	2	1	6	27	610
54	422	23	163	11	2	6	16	643
55	535	20	155	1	3	0	11	725
56	345	132	92	0	6	3	9	587
57	202	81	21	0	1	4	10	319
58	140	10	93	0	3	0	5	251
59	83	291	12	6	2	4	6	404
60	74	310	33	0	3	2	6	428
61	364	152	39	0	0	7	20	582
62	263	97	107	0	3	2	18	490
63	317	181	38	1	4	8	18	567
64	308	121	28	2	4	8	25	496
65	102	166	192	0	4	5	11	480
66	216	15	17	0	0	2	1	251
67	63	281	123	1	2	5	4	479
68	412	32	40	1	3	1	16	505
69	222	160	70	0	4	1	4	461
70	248	176	16	0	2	4	6	452

Contd....

Polling Station Level Election Results

Winner, Runner-up and 3rd Party Position & Winning Margin According to Polling Stations in Sagri Assembly in Assembly Election (AE) under Azamgarh Parliamentary Constituency in Uttar Pradesh (2022)

Polling Station Number	Winner Party	Winner Votes (%)	Runner-up Party	Runner-up Votes (%)	Winning Margin Votes (%)	Third Party	Third Party Votes (%)	Other Votes (%)
71	BJP	147 (33.18)	BSP	143 (32.28)	4 (0.9)	SP	118 (26.64)	35 (7.9)
72	SP	179 (46.98)	BJP	149 (39.11)	30 (7.87)	BSP	31 (8.14)	22 (5.77)
73	SP	213 (54.9)	BJP	128 (32.99)	85 (21.91)	BSP	32 (8.25)	15 (3.87)
74	BSP	189 (50.27)	BJP	100 (26.6)	89 (23.67)	SP	77 (20.48)	10 (2.66)
75	SP	98 (41.35)	BJP	94 (39.66)	4 (1.69)	BSP	33 (13.92)	12 (5.06)
76	SP	250 (67.93)	BJP	76 (20.65)	174 (47.28)	BSP	38 (10.33)	4 (1.09)
77	BJP	154 (45.03)	SP	86 (25.15)	68 (19.88)	BSP	76 (22.22)	26 (7.6)
78	SP	136 (48.75)	BJP	117 (41.94)	19 (6.81)	BSP	24 (8.6)	2 (0.72)
79	SP	250 (54.95)	BJP	125 (27.47)	125 (27.48)	BSP	65 (14.29)	15 (3.3)
80	BJP	216 (49.2)	SP	114 (25.97)	102 (23.23)	BSP	89 (20.27)	20 (4.56)
81	SP	164 (70.09)	BSP	29 (12.39)	135 (57.7)	BJP	26 (11.11)	15 (6.41)
82	BJP	151 (35.36)	SP	147 (34.43)	4 (0.93)	BSP	111 (26)	18 (4.22)
83	BJP	206 (53.65)	SP	81 (21.09)	125 (32.56)	BSP	81 (21.09)	16 (4.17)
84	SP	208 (37.96)	BSP	177 (32.3)	31 (5.66)	BJP	148 (27.01)	15 (2.74)
85	SP	156 (42.28)	BSP	120 (32.52)	36 (9.76)	BJP	77 (20.87)	16 (4.34)
86	SP	208 (66.88)	BJP	60 (19.29)	148 (47.59)	BSP	26 (8.36)	17 (5.47)
87	BJP	292 (61.09)	SP	153 (32.01)	139 (29.08)	BSP	13 (2.72)	20 (4.18)
88	SP	220 (54.86)	BJP	105 (26.18)	115 (28.68)	BSP	61 (15.21)	15 (3.74)
89	BJP	169 (48.84)	SP	158 (45.66)	11 (3.18)	BSP	14 (4.05)	5 (1.45)
90	SP	206 (44.59)	BSP	152 (32.9)	54 (11.69)	BJP	79 (17.1)	25 (5.41)
91	BJP	239 (50.53)	BSP	158 (33.4)	81 (17.13)	SP	57 (12.05)	19 (4.02)
92	BJP	242 (56.41)	SP	147 (34.27)	95 (22.14)	BSP	36 (8.39)	4 (0.93)
93	BSP	335 (68.51)	BJP	76 (15.54)	259 (52.97)	SP	54 (11.04)	24 (4.91)
94	BJP	149 (51.38)	SP	84 (28.97)	65 (22.41)	BSP	51 (17.59)	6 (2.07)
95	SP	327 (70.63)	BJP	100 (21.6)	227 (49.03)	JANADIP	21 (4.54)	15 (3.24)
96	SP	231 (55.8)	BJP	85 (20.53)	146 (35.27)	BSP	76 (18.36)	22 (5.31)
97	SP	243 (46.37)	BSP	219 (41.79)	24 (4.58)	BJP	28 (5.34)	34 (6.49)
98	SP	347 (75.11)	JANADIP	68 (14.72)	279 (60.39)	BSP	29 (6.28)	18 (3.9)
99	SP	217 (53.45)	BJP	165 (40.64)	52 (12.81)	BSP	16 (3.94)	8 (1.97)
100	BSP	242 (49.19)	BJP	122 (24.8)	120 (24.39)	SP	112 (22.76)	16 (3.25)
101	BSP	164 (38.23)	SP	147 (34.27)	17 (3.96)	BJP	83 (19.35)	35 (8.16)
102	BJP	191 (53.8)	SP	136 (38.31)	55 (15.49)	BSP	16 (4.51)	12 (3.38)
103	SP	407 (66.29)	BJP	177 (28.83)	230 (37.46)	BSP	12 (1.95)	18 (2.93)
104	SP	226 (44.84)	BJP	147 (29.17)	79 (15.67)	BSP	111 (22.02)	20 (3.97)
105	SP	307 (60.91)	BJP	163 (32.34)	144 (28.57)	BSP	11 (2.18)	23 (4.56)

Contd....

Socio-Economic Amenities - Rural

Access to Education Facilities

Particulars	Number of Villages (% of Population)				
	Available	Not Available	If Not Available (Distance of Nearest Facility)		
			A	B	C
Govt. Primary School	206 (73)	229 (27)	113 (11)	13 (0)	9 (1)
Private Primary School	66 (35)	369 (65)	10 (1)	0 (0)	0 (0)
Govt. Middle School	111 (50)	324 (50)	193 (29)	18 (1)	7 (0)
Private Middle School	40 (25)	395 (75)	24 (3)	2 (0)	0 (0)
Govt. Secondary School	25 (13)	410 (87)	151 (29)	42 (8)	8 (2)
Private Secondary School	23 (18)	412 (82)	116 (21)	33 (5)	3 (1)
Govt. Senior Secondary School	0 (0)	435 (100)	138 (29)	54 (10)	19 (5)
Private Senior Secondary School	6 (10)	429 (90)	105 (18)	37 (7)	9 (2)
Govt. Arts and Science Degree College	2 (1)	433 (99)	33 (6)	47 (11)	85 (21)
Private Arts and Science Degree College	4 (2)	431 (98)	112 (24)	46 (11)	38 (8)
Govt. Engineering College	0 (0)	435 (100)	1 (1)	8 (2)	221 (51)
Private Engineering College	1 (0)	434 (100)	4 (2)	15 (6)	148 (32)
Govt. Medicine College	0 (0)	435 (100)	13 (4)	13 (4)	189 (48)
Private Medicine College	2 (1)	433 (99)	2 (0)	3 (1)	183 (34)
Govt. Management Institute	0 (0)	435 (100)	4 (1)	1 (0)	215 (56)
Private Management Institute	0 (0)	435 (100)	7 (3)	15 (5)	138 (25)
Govt. Polytechnic	0 (0)	435 (100)	2 (0)	0 (0)	402 (94)
Private Polytechnic	0 (0)	435 (100)	0 (0)	2 (0)	10 (2)
Govt. Vocational Training School/ITI	0 (0)	435 (100)	3 (1)	3 (0)	397 (91)
Private Vocational Training School/ITI	0 (0)	435 (100)	0 (0)	2 (2)	7 (1)
Govt. Non Formal Training Centre	0 (0)	435 (100)	12 (3)	35 (10)	286 (63)
Private Non Formal Training Centre	0 (0)	435 (100)	1 (0)	14 (3)	10 (1)
Govt. School For Disabled	0 (0)	435 (100)	9 (2)	41 (10)	147 (41)
Private School For Disabled	0 (0)	435 (100)	67 (9)	50 (10)	27 (6)
Government Others	0 (0)	435 (100)	0 (0)	3 (1)	6 (3)
Private Others	0 (0)	435 (100)	14 (2)	6 (1)	0 (0)

Note : Distance A : Less than 5 km; B : Between 5-10 km; C : 10+ km.; Source : Data Analysis is based on 2011 Census.

DISCLAIMER

The Terms of Use and Disclaimer of Datanet India Private Limited (hereinafter referred to as "Datanet") for use of this analysis report of **Sagri Assembly Constituency (Sagri Vidhan Sabha)** :-

1. **Assembly Factbook™** is a Registered Trade Mark owned by Datanet.
2. All the maps are sketched and graphical representation only and have not been drawn to the scale and also not to represent the actual geographical area or boundary of the unit.
3. The data for the aforesaid analysis is based on authentic sources and has been culled from the various publications of Census, CSO and NSSO for district and block level data, various central and state government departments, Central & State Elections Commissions and the concerned Returning Officers' releases, Electoral Rolls, Election results and allied publications, internal assessment, surveys, estimates and analysis. Therefore, certain adjustment of data at micro level may have been done to arrive closer to the macro data.
4. Data have been provided on an "As Is" and "As AVAILABLE" basis
5. The colours shown in the maps or diagram and charts of a particular party, alliance or AC are indicative and do not represent them.
6. This publication which includes maps, sheets, graphs and data would be the property under copyright of Datanet only. The user may use these for its internal study, analysis and research purposes. It's public display, re-selling or any commercial uses by the user are not allowed.
7. Datanet has taken due care and caution in compilation and processing of data and allied information, but does not guarantee the accuracy, adequacy or completeness of any information/analysis and will be not responsible for any errors or omissions or for the results obtained from the use of such information/analysis.
8. All the contents for the publication have been culled from various authentic sources and Datanet reasonably believes such sources to be reliable, but does not make any representations, express or implied as to the accuracy or fitness of use of such information. The information or contents of the information/analysis do not constitute advice and should not be relied upon in making (or refraining from making) any decision. Any reliance placed upon the information provided by Datanet is the sole responsibility and strictly at the user's risk.
9. In no event will Datanet be liable for any damages (including, without limitation, damages for loss of business projects, or loss of profits) arising in contract, tort or otherwise from the use of or inability to use any of its contents, or from any action taken (or refrained from being taken) as a result of using the analysis or any of its contents. Datanet its directors, owners, editors, officials, employees, distributor and agents or any associate will not be liable for any errors in the information contained or any consequences arising from the use of the contents of the provided information/analysis.
10. If any provision of these terms and conditions is held invalid or illegal or unenforceable for any reason by any court of competent jurisdiction, such provision shall be severed and the remainder of provisions of the terms and conditions shall continue in full force and effect as if the Term of Use had been executed with the invalid, illegal or unenforceable provision eliminated.
11. If there are any discrepancies in the information provided, please bring it to attention of Datanet for suitable rectification measures.

**Buy Online This Complete Book At
Datanet India eBooks Store**

www.indiastatpublications.com

or go directly at

**[http://www.indiastatpublications.com/
Assembly_factbook/Uttar Pradesh/Azamgarh/ Sagri](http://www.indiastatpublications.com/Assembly_factbook/Uttar%20Pradesh/Azamgarh/Sagri)**

 **indiastat**elections

ISBN : 978-93-5905-900-6



9 789359 059006