



Uttar Pradesh

# Assembly Factbook™

Phephana Assembly Constituency



Key Electoral Data of Phephana  
Assembly Constituency (Vidhan Sabha)

Uttar Pradesh

# **Assembly Factbook™**

Phephana Assembly Constituency



Phephana Vidhan Sabha

**Editor & Director**

Dr. R.K. Thukral

**Research Editor**

Dr. Shafeeq Rahman

**Compiled, Researched and Published by  
Datanet India Pvt. Ltd.**

D-100, 1st Floor,

Okhla Industrial Area, Phase-I,

New Delhi- 110020.

Ph.: 91-11- 43580781-84

Email : support@indiastatpublications.com

Website : www.indiastatelections.com

**Online Book Store :**

www.indiastatpublications.com

**Report No. :** AFB/UP-360-0123

**ISBN :** 978-93-5905-818-4

**First Edition :** January, 2018

**Sixth Updated Edition :** January, 2023

**Price :** Rs.11500/-

US\$ 310

**© Datanet India Pvt. Ltd.**

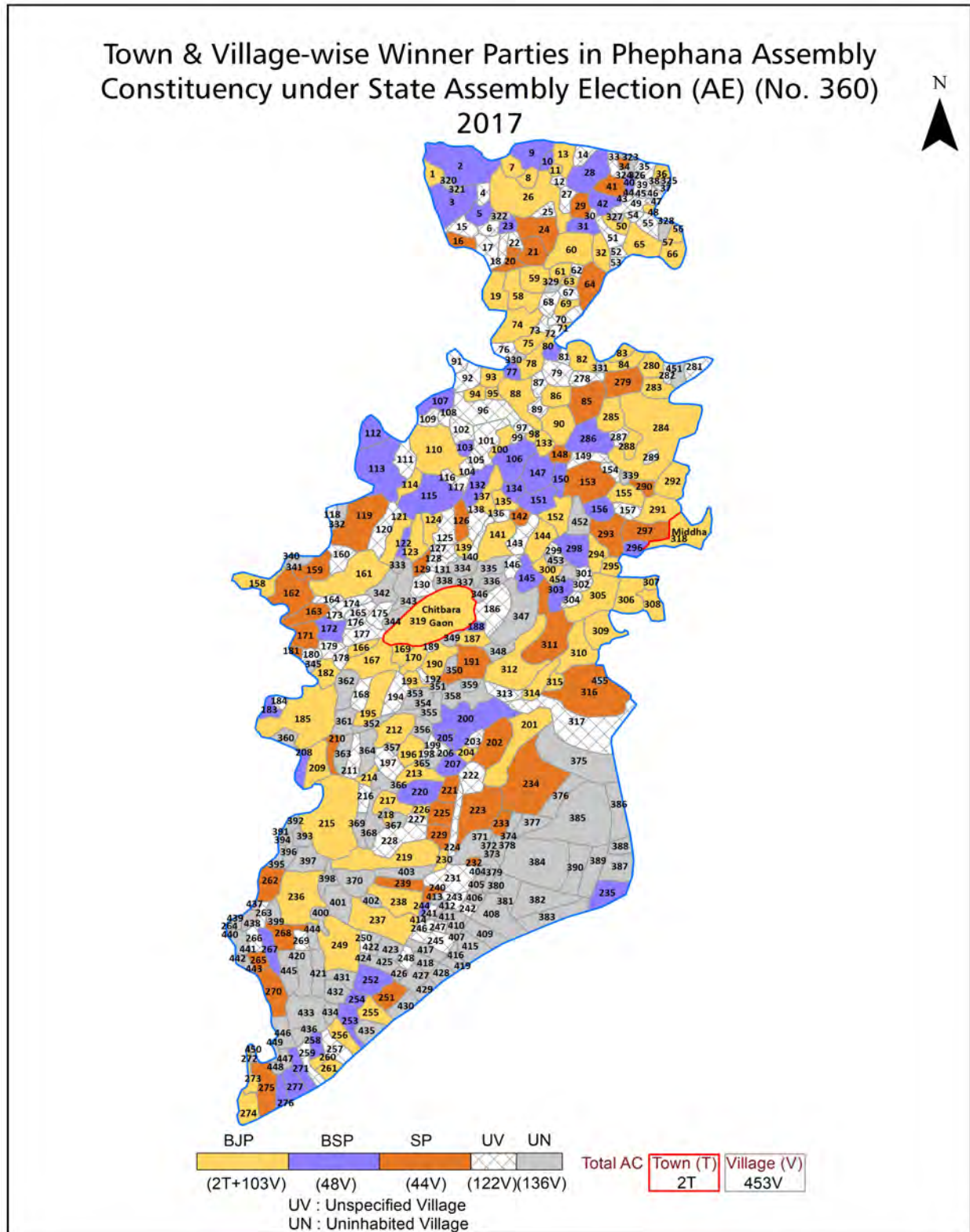
All rights reserved. No part of this book may be reproduced, stored in a retrieval system or transmitted in any form or by any means, mechanical photocopying, photographing, scanning, recording or otherwise without the prior written permission of the publisher. Please refer to Disclaimer at page no. 292 for the use of this publication.

Printed in India

No.	Particulars	Page No.
	<b>Introduction</b>	
1	Assembly Constituency - (Vidhan Sabha) at a Glance   Features of Assembly as per Delimitation Commission of India (2008)	1-2
	<b>Location and Political Maps</b>	
2	Location Map   Boundaries of Assembly Constituency - (Vidhan Sabha) in District   Boundaries of Assembly Constituency under Parliamentary Constituency - (Lok Sabha)   Town & Village-wise Winner Parties-2022, 2019, 2017, 2014, 2012 and 2009	3-11
	<b>Administrative Setup (2011)</b>	
3	District   Sub-district   Towns   Villages   Inhabited Villages   Uninhabited Villages   Village Panchayat   Intermediate Panchayat	12-28
	<b>Demographics (2011)</b>	
4	Population   Households   Rural/Urban Population   Towns and Villages by Population Size   Sex Ratio (Total & 0-6 Years)   Religious Population   Social Population   Literacy Rate	29-30
	<b>Electoral Features</b>	
5	Important Dates of Last Elections Held   Electors by Gender   Service Electors   Voters   Voters Turnout   Polling Stations & Average Number of Electors per Polling Station   Electors by Age Group   Present Elected Representatives	31-36
	<b>Historical Summary Election Results</b>	
6	Vote Share of Major Parties   Winning Margin (Number & Percentage)   Polarity of Parties   Summary Result of Assembly Segment of Parliamentary Election 2019, 2014 and 2009   Summary Result of Assembly Elections 2022, 2017 and 2012	37-45
	<b>Polling Station Level Election Results</b>	
7	Name and Number of Polling Station 2022, 2019, 2017, 2014, 2012 and 2009   Polling Station-wise Electors, Voters & Voters Turnout 2022, 2019, 2017, 2014, 2012 and 2009   Polling Station wise Elections Results 2022, 2019, 2017, 2014, 2012 and 2009	46-254
8	<b>Panchayat and Local Bodies Election Results</b> Panchayat Result 2015   Urban Local Bodies Result 2012	255-270
	<b>Share of Assembly Constituency</b>	
9	Share of Assembly Constituency - (Vidhan Sabha) in State, District and Parliamentary Constituency - (Lok Sabha)	271
	<b>Socio-Economic Amenities (2011)</b>	
10	Access to Administrative Units   Agricultural, Manufacturing and Industrial Commodities   Demographic Indicators   Education   Health & Manpower   Drinking Water Supply   Sanitation   Entertainment and Recreations Infrastructure   Power   Food Allocation Distribution and Marketing of Agriculture Commodities Infrastructure   Transport and Road Infrastructure   Communication   Banking and Financial Services   Land Use   Irrigation Source	273-287
11	<b>Abbreviation &amp; Sources</b>	288-291
12	<b>Disclaimer</b>	292



## Location & Political Map



## Administrative Setup

### List of Village Panchayat & Intermediate Panchayat (Block) Name - 2011

Village Name	Village Panchayat Name	Intermediate Panchayat Name
Abhaipur	Bahadur Pur	Garwar
Ajari Patpar	Panch Khirakala	Garwar
Ajorpur	Ajorpur	Hanumanganj
Akauani	Dularpur	Sohaon
Akhtiyarpur	Akhatiyar Pur	Sohaon
Akoni	Ekauni	Garwar
Alawanpur	Banraha	Hanumanganj
Amanpur Mutke Trikalpur	Narayan Pal	Garwar
Amao	Amav	Sohaon
Amdaria	Amadriya	Garwar
Araipur	Araipur	Garwar
Araji Chawari	Chawari	Garwar
Araji Mafi Bhikhampur	Bhikhampur	Garwar
Araji Mafi Ekawari Kalan	Ekawari	Garwar
Araji Mafi Ekawari Khurd	Ekwari	Garwar
Araji Mafi Garhwar	Darhwar	Garwar
Araji Mafi Karnai	Keshuruwa	Hanumanganj
Araji Mutawakhipur	Mutavkhipur	Garwar
Araji Parsia	Parsiya	Garwar
Araji Roshingpur	Rausihanpur	Garwar
Arajimafi Sagarpali	Sagarpali	Hanumanganj
Asan	Asan	Garwar
Ashapur	Sujayat	Sohaon
Awagilwa	Dhamipur	Sohaon
Babhanouli	Bamnauli	Garwar
Babhnauli	Vasudeva	Sohaon
Badanpura	Badanpura	Garwar
Badhvalia	Badliya	Sohaon
Baghewa	Chanuki	Hanumanganj

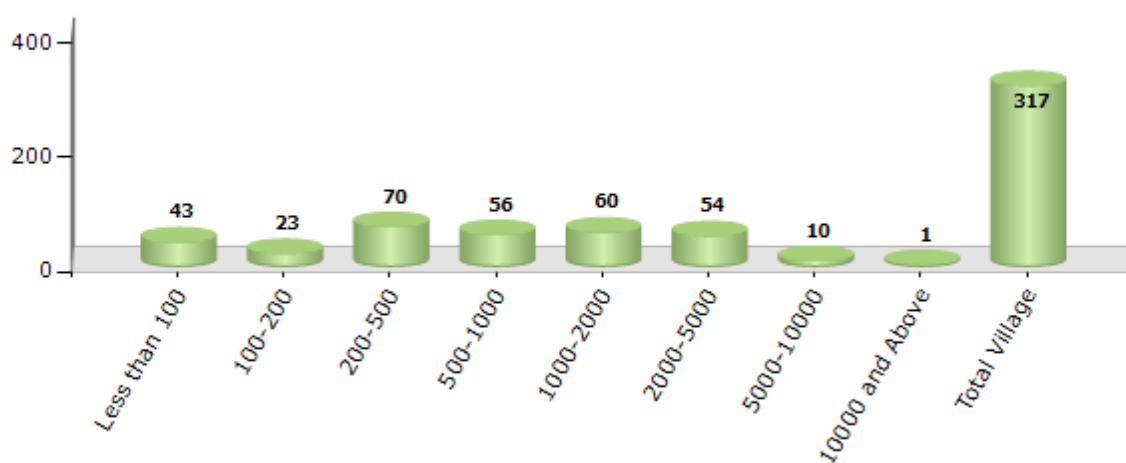
Contd....

## Demographics

### Number of Villages by Population Size - 2011

Less than 100	100-200	200-500	500-1000	1000-2000	2000-5000	5000-10000	10000 and Above	Total Village
43	23	70	56	60	54	10	1	317

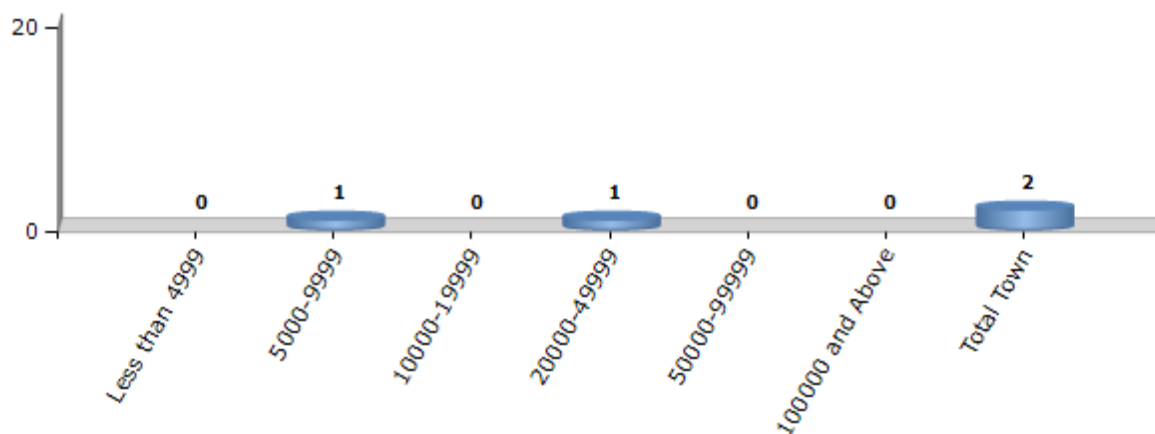
Number of Villages by Population Size - 2011



### Number of Towns by Population Size - 2011

Less than 4999	5000-9999	10000-19999	20000-49999	50000-99999	100000 and Above	Total Town
0	1	0	1	0	0	2

Number of Towns by Population Size - 2011

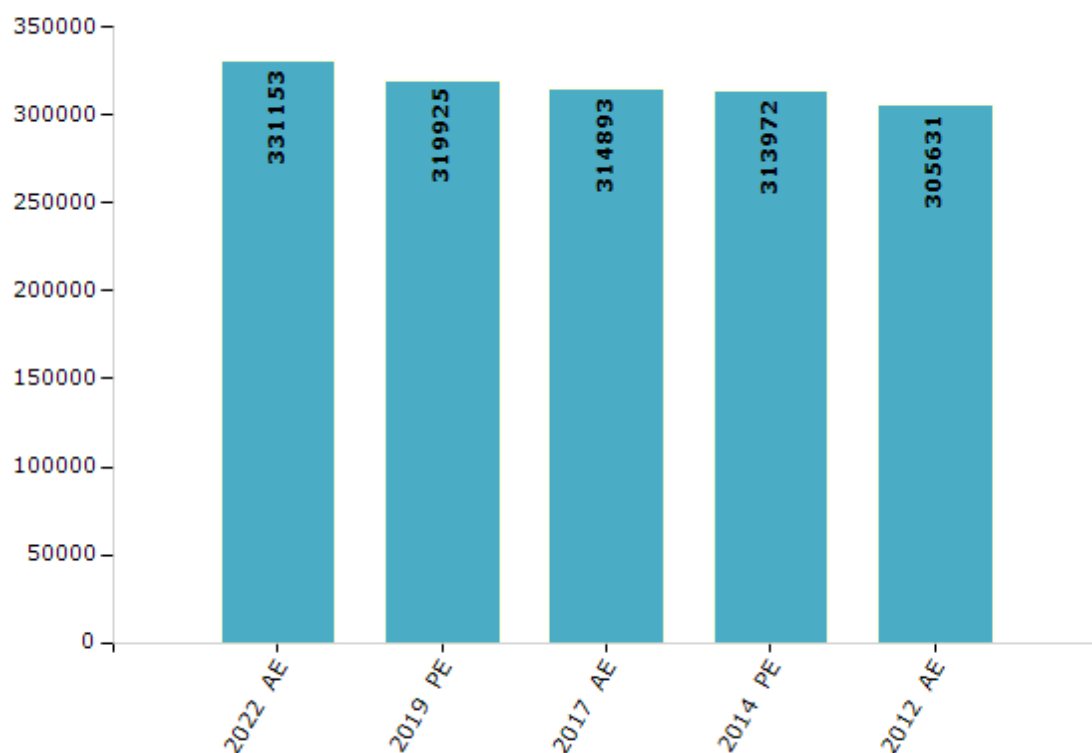


## Electoral Features

### Electors by Male & Female

Year	Male	Female	Others	Total	Year	Male	Female	Others	Total
2022 AE	179806	151345	2	331153	1991 AE	-	-	-	-
2019 PE	175300	144625	0	319925	1989 AE	-	-	-	-
2017 AE	171840	143053	0	314893	1985 AE	-	-	-	-
2014 PE	171219	142746	7	313972	1980 AE	-	-	-	-
2012 AE	169337	136279	15	305631	1977 AE	-	-	-	-
2009 PE	-	-	-	-	1974 AE	-	-	-	-
2007 AE	-	-	-	-	1969 AE	-	-	-	-
2004 PE	-	-	-	-	1967 AE	-	-	-	-
2002 AE	-	-	-	-	1962 AE	-	-	-	-
1999 PE	-	-	-	-	1957 AE	-	-	-	-
1996 AE	-	-	-	-	1952 AE	-	-	-	-
1993 AE	-	-	-	-					

Number of Electors



**Note :** AE : Assembly Election, PE : Assembly Segment of Parliamentary Election

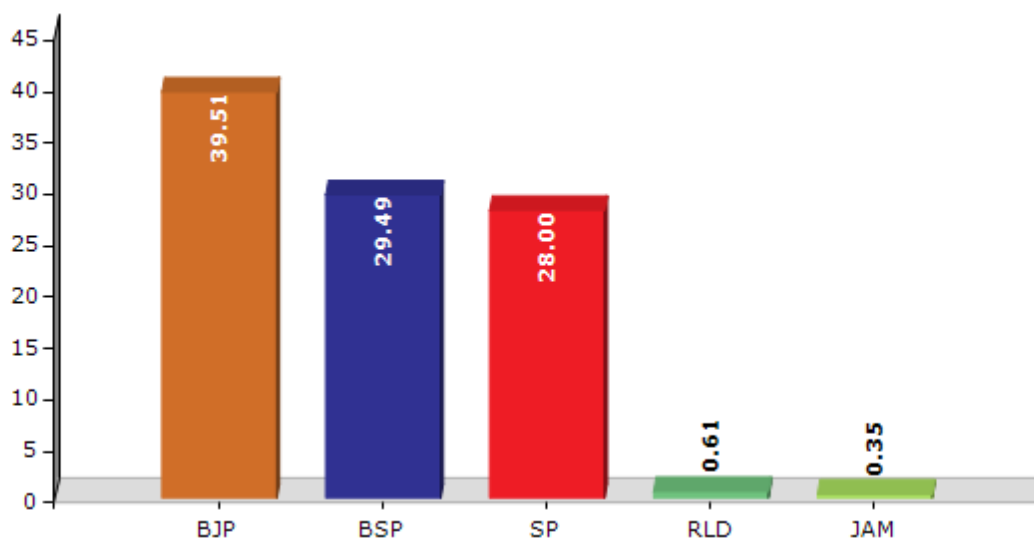


## Historical Summary Election Results

### Summary Result of Assembly Election - 2017

Candidate Name	Party	Votes	Votes %
Upendra Tiwari	BJP	70588	39.51
Ambika Choudhary	BSP	52691	29.49
Sangram Singh Yadav	SP	50016	28
Saudagar Yadav	RLD	1083	0.61
Matadeen	JAM	628	0.35
Raju Singh	IND	500	0.28
Usha Rai	IND	406	0.23
Amrita Devi	IND	402	0.23
Satyanand	BMUP	338	0.19
Harendra Yadav	VIP	277	0.16
Dhirendra Kumar	IND	245	0.14
	NOTA	1473	0.82

Votes Percentage of Top Parties - 2017



## Polling Station Level Election Results

### Number and Name of Polling Stations (PS) (2022)

Number of Polling Stations	Name of Polling Stations	Number of Polling Stations	Name of Polling Stations
1	Uchch P.V Bahadurpurkari,East	22	I.C.Ratasad Kalan,South
2	Uchch P.V Bahadurpurkari,West	23	I.C.Ratasad Kalan,East
3	Uchch P.V Bahadurpurkari,Middle	24	I.C.Ratasad Kalan,East
4	P.P. Abhaipur No-1	25	I.C.Ratasad Kalan,West
5	P.P. Abhaipur No-1	26	I.C.Ratasad Kalan,North
6	P.P.Amadariya,North	27	P.P.Vikabhagat Ke Pokhara,North
7	P.P.Amadariya,South	28	P.P.Vikabhagat Ke Pokhara,South
8	P.P.Chhatawan	29	P.P. Ratsad Kala (Barya) East
9	P.P.Jigani Mu.Ratasad	30	P.P. Ratsad Kala (Barya) West
10	Composit V.Jiganahara,	31	P.P.Town Ratasad,North
11	P.P.Suhava	32	P.P.Town Ratasad,South
12	P.P.Mathamain	33	P.P.Town Ratasad,South
13	P.P.Chavari	34	P.P.Pachakhorakalan,North
14	Jr.H.S.Chawari Sarabhari Kalan	35	P.P.Pachakhorakalan,South
15	P.P.Pipara Kalan,North	36	J.H.S Pachkhora Khurd East
16	P.P.Pipara Kalan,South	37	J.H.S Pachkhora Khurd West
17	P.P.Araji Patapar	38	P.P.Dhanautidhura,North
18	P.P.Pranpur East	39	P.P.Dhanautidhura,South
19	P.P.Pranpur West	40	P.P.Dhanauti Slem
20	Sampurnanand I.C.Ratasad Kalan,Middle	41	P.P.Kachabachia Kalan East
21	Sampurnanand I.C.Ratasad Kalan,South	42	P.P.Kachabachia Kalan West

Contd....

## Polling Station Level Election Results

### Polling Station-wise Votes Secured by Overall Top Five Parties in Phephana Assembly in Assembly Election (AE) under Ballia Parliamentary Constituency in Uttar Pradesh (2022)

Number of Polling Station	Winner - Sangram Singh (SP)	Runner-up - Upendra Tiwari (BJP)	3rd - Kamal Dev (BSP)	4th - Vivek (VSIP)	5th - Jainendra (INC)	NOTA	Other	Total Votes Secured
36	133	198	208	2	6	2	17	566
37	288	39	4	0	2	1	7	341
38	380	65	11	0	3	3	32	494
39	236	317	53	0	3	2	16	627
40	172	243	149	3	4	11	23	605
41	260	112	26	1	7	2	10	418
42	201	118	21	0	4	1	8	353
43	178	159	7	0	0	4	7	355
44	161	201	30	0	4	3	4	403
45	160	263	2	1	5	0	11	442
46	187	164	39	2	6	2	22	422
47	251	311	10	0	4	4	14	594
48	182	166	5	0	6	3	2	364
49	201	200	4	0	2	2	10	419
50	265	313	12	0	7	8	43	648
51	305	183	73	0	7	2	21	591
52	311	266	6	0	2	1	6	592
53	276	38	4	0	2	0	24	344
54	55	282	12	0	12	0	1	362
55	260	113	103	0	3	3	4	486
56	241	222	12	0	30	6	18	529
57	391	248	3	1	2	3	9	657
58	243	267	3	0	3	3	9	528
59	524	124	1	0	1	1	7	658
60	209	93	144	0	5	1	7	459
61	189	324	37	0	4	2	8	564
62	411	84	0	0	0	3	6	504
63	180	350	7	0	7	7	10	561
64	344	121	21	0	17	1	10	514
65	78	263	5	2	17	0	3	368
66	136	374	7	21	3	2	63	606
67	174	162	19	0	8	1	13	377
68	294	167	8	2	4	2	13	490
69	148	253	4	1	6	8	9	429
70	69	126	3	0	0	1	12	211

Contd....

## Polling Station Level Election Results

**Winner, Runner-up and 3rd Party Position & Winning Margin According to Polling Stations in Phephana Assembly in Assembly Election (AE) under Ballia Parliamentary Constituency in Uttar Pradesh (2022)**

Polling Station Number	Winner Party	Winner Votes (%)	Runner-up Party	Runner-up Votes (%)	Winning Margin Votes (%)	Third Party	Third Party Votes (%)	Other Votes (%)
71	SP	470 (62.25)	BJP	140 (18.54)	330 (43.71)	JANADIP	99 (13.11)	46 (6.09)
72	SP	378 (81.82)	BJP	65 (14.07)	313 (67.75)	INC	13 (2.81)	6 (1.3)
73	BJP	372 (67.64)	SP	147 (26.73)	225 (40.91)	INC	8 (1.45)	23 (4.18)
74	SP	275 (57.65)	BJP	176 (36.9)	99 (20.75)	BSP	8 (1.68)	18 (3.77)
75	BJP	285 (77.87)	SP	65 (17.76)	220 (60.11)	INC	6 (1.64)	10 (2.73)
76	SP	257 (52.88)	BJP	176 (36.21)	81 (16.67)	BSP	31 (6.38)	22 (4.53)
77	BJP	198 (51.3)	SP	159 (41.19)	39 (10.11)	INC	16 (4.15)	13 (3.37)
78	SP	169 (53.48)	BJP	91 (28.8)	78 (24.68)	BSP	37 (11.71)	19 (6.01)
79	SP	388 (59.88)	BJP	215 (33.18)	173 (26.7)	VSIP	28 (4.32)	17 (2.62)
80	SP	224 (44.36)	BJP	171 (33.86)	53 (10.5)	BSP	92 (18.22)	18 (3.56)
81	BJP	379 (53.38)	SP	276 (38.87)	103 (14.51)	VSIP	21 (2.96)	34 (4.79)
82	BJP	217 (37.74)	BSP	146 (25.39)	71 (12.35)	SP	135 (23.48)	77 (13.39)
83	BJP	153 (54.64)	SP	102 (36.43)	51 (18.21)	INC	10 (3.57)	15 (5.36)
84	BSP	129 (36.54)	SP	121 (34.28)	8 (2.26)	BJP	86 (24.36)	17 (4.82)
85	BJP	284 (55.04)	SP	190 (36.82)	94 (18.22)	VSIP	15 (2.91)	27 (5.23)
86	BJP	197 (54.87)	SP	135 (37.6)	62 (17.27)	INC	9 (2.51)	18 (5.01)
87	BJP	257 (46.06)	SP	172 (30.82)	85 (15.24)	BSP	105 (18.82)	24 (4.3)
88	BJP	293 (50.26)	SP	279 (47.86)	14 (2.4)	BSP	6 (1.03)	5 (0.86)
89	BJP	262 (46.37)	SP	172 (30.44)	90 (15.93)	BSP	102 (18.05)	29 (5.13)
90	BJP	255 (51.1)	SP	162 (32.46)	93 (18.64)	BSP	68 (13.63)	14 (2.81)
91	BJP	137 (53.73)	SP	99 (38.82)	38 (14.91)	INC	13 (5.1)	6 (2.35)
92	BJP	250 (45.37)	SP	203 (36.84)	47 (8.53)	VSIP	46 (8.35)	52 (9.44)
93	BJP	368 (58.41)	SP	222 (35.24)	146 (23.17)	VSIP	20 (3.17)	20 (3.17)
94	BJP	246 (42.78)	SP	192 (33.39)	54 (9.39)	BSP	112 (19.48)	25 (4.35)
95	SP	422 (63.08)	BJP	183 (27.35)	239 (35.73)	BSP	31 (4.63)	33 (4.93)
96	SP	165 (43.54)	BJP	161 (42.48)	4 (1.06)	BSP	45 (11.87)	8 (2.11)
97	SP	194 (46.52)	BJP	142 (34.05)	52 (12.47)	BSP	67 (16.07)	14 (3.36)
98	SP	341 (51.51)	BJP	246 (37.16)	95 (14.35)	BSP	36 (5.44)	39 (5.89)
99	BSP	223 (37.54)	BJP	187 (31.48)	36 (6.06)	SP	155 (26.09)	29 (4.88)
100	SP	340 (71.88)	BJP	120 (25.37)	220 (46.51)	INC	6 (1.27)	7 (1.48)
101	BSP	209 (41.39)	BJP	183 (36.24)	26 (5.15)	SP	97 (19.21)	16 (3.17)
102	BJP	247 (46)	SP	161 (29.98)	86 (16.02)	BSP	117 (21.79)	12 (2.23)
103	BJP	321 (56.12)	BSP	145 (25.35)	176 (30.77)	SP	90 (15.73)	16 (2.8)
104	BJP	219 (49.32)	SP	201 (45.27)	18 (4.05)	INC	9 (2.03)	15 (3.38)
105	BJP	191 (55.04)	SP	89 (25.65)	102 (29.39)	BSP	55 (15.85)	12 (3.46)

Contd....

## Socio-Economic Amenities - Rural

### Access to Education Facilities

Particulars	Number of Villages (% of Population)				
	Available	Not Available	If Not Available (Distance of Nearest Facility)		
			A	B	C
Govt. Primary School	132 (49)	185 (51)	57 (4)	7 (1)	0 (0)
Private Primary School	67 (50)	250 (50)	2 (0)	1 (0)	0 (0)
Govt. Middle School	60 (31)	257 (69)	121 (22)	13 (3)	4 (0)
Private Middle School	21 (17)	296 (83)	5 (1)	0 (0)	0 (0)
Govt. Secondary School	13 (9)	304 (91)	139 (33)	39 (13)	5 (1)
Private Secondary School	11 (14)	306 (86)	26 (5)	6 (0)	1 (0)
Govt. Senior Secondary School	8 (6)	309 (94)	121 (31)	53 (17)	20 (5)
Private Senior Secondary School	6 (10)	311 (90)	29 (6)	4 (2)	1 (0)
Govt. Arts and Science Degree College	0 (0)	317 (100)	42 (12)	55 (19)	86 (29)
Private Arts and Science Degree College	0 (0)	317 (100)	31 (7)	22 (6)	7 (1)
Govt. Engineering College	0 (0)	317 (100)	8 (1)	22 (12)	214 (60)
Private Engineering College	0 (0)	317 (100)	1 (0)	1 (1)	2 (1)
Govt. Medicine College	0 (0)	317 (100)	6 (1)	15 (10)	222 (62)
Private Medicine College	0 (0)	317 (100)	0 (0)	0 (0)	0 (0)
Govt. Management Institute	0 (0)	317 (100)	1 (0)	19 (10)	205 (60)
Private Management Institute	0 (0)	317 (100)	0 (0)	0 (0)	0 (0)
Govt. Polytechnic	0 (0)	317 (100)	4 (0)	27 (15)	232 (69)
Private Polytechnic	0 (0)	317 (100)	0 (0)	0 (0)	3 (1)
Govt. Vocational Training School/ITI	0 (0)	317 (100)	5 (3)	31 (15)	224 (61)
Private Vocational Training School/ITI	0 (0)	317 (100)	2 (1)	2 (1)	0 (0)
Govt. Non Formal Training Centre	0 (0)	317 (100)	18 (7)	30 (13)	145 (40)
Private Non Formal Training Centre	0 (0)	317 (100)	0 (0)	0 (0)	1 (0)
Govt. School For Disabled	0 (0)	317 (100)	7 (1)	16 (9)	134 (35)
Private School For Disabled	0 (0)	317 (100)	0 (0)	0 (0)	1 (0)
Government Others	0 (0)	317 (100)	2 (1)	7 (4)	23 (5)
Private Others	0 (0)	317 (100)	0 (0)	0 (0)	0 (0)

Note : Distance A : Less than 5 km; B : Between 5-10 km; C : 10+ km.; Source : Data Analysis is based on 2011 Census.



## DISCLAIMER

The Terms of Use and Disclaimer of Datanet India Private Limited (hereinafter referred to as "Datanet") for use of this analysis report of **Phephana Assembly Constituency (Phephana Vidhan Sabha)** :-

1. **Assembly Factbook™** is a Registered Trade Mark owned by Datanet.
2. All the maps are sketched and graphical representation only and have not been drawn to the scale and also not to represent the actual geographical area or boundary of the unit.
3. The data for the aforesaid analysis is based on authentic sources and has been culled from the various publications of Census, CSO and NSSO for district and block level data, various central and state government departments, Central & State Elections Commissions and the concerned Returning Officers' releases, Electoral Rolls, Election results and allied publications, internal assessment, surveys, estimates and analysis. Therefore, certain adjustment of data at micro level may have been done to arrive closer to the macro data.
4. Data have been provided on an "As Is" and "As AVAILABLE" basis
5. The colours shown in the maps or diagram and charts of a particular party, alliance or AC are indicative and do not represent them.
6. This publication which includes maps, sheets, graphs and data would be the property under copyright of Datanet only. The user may use these for its internal study, analysis and research purposes. It's public display, re-selling or any commercial uses by the user are not allowed.
7. Datanet has taken due care and caution in compilation and processing of data and allied information, but does not guarantee the accuracy, adequacy or completeness of any information/analysis and will be not responsible for any errors or omissions or for the results obtained from the use of such information/analysis.
8. All the contents for the publication have been culled from various authentic sources and Datanet reasonably believes such sources to be reliable, but does not make any representations, express or implied as to the accuracy or fitness of use of such information. The information or contents of the information/analysis do not constitute advice and should not be relied upon in making (or refraining from making) any decision. Any reliance placed upon the information provided by Datanet is the sole responsibility and strictly at the user's risk.
9. In no event will Datanet be liable for any damages (including, without limitation, damages for loss of business projects, or loss of profits) arising in contract, tort or otherwise from the use of or inability to use any of its contents, or from any action taken (or refrained from being taken) as a result of using the analysis or any of its contents. Datanet its directors, owners, editors, officials, employees, distributor and agents or any associate will not be liable for any errors in the information contained or any consequences arising from the use of the contents of the provided information/analysis.
10. If any provision of these terms and conditions is held invalid or illegal or unenforceable for any reason by any court of competent jurisdiction, such provision shall be severed and the remainder of provisions of the terms and conditions shall continue in full force and effect as if the Term of Use had been executed with the invalid, illegal or unenforceable provision eliminated.
11. If there are any discrepancies in the information provided, please bring it to attention of Datanet for suitable rectification measures.

**Buy Online This Complete Book At  
Datanet India eBooks Store**

**[www.indiastatpublications.com](http://www.indiastatpublications.com)**

**or go directly at**

**[http://www.indiastatpublications.com/  
Assembly\\_factbook/Uttar Pradesh/Ballia/ Phephana](http://www.indiastatpublications.com/Assembly_factbook/Uttar%20Pradesh/Ballia/Phephana)**



**i** indiastat**elections**

ISBN : 978-93-5905-818-4



9 789359 058184