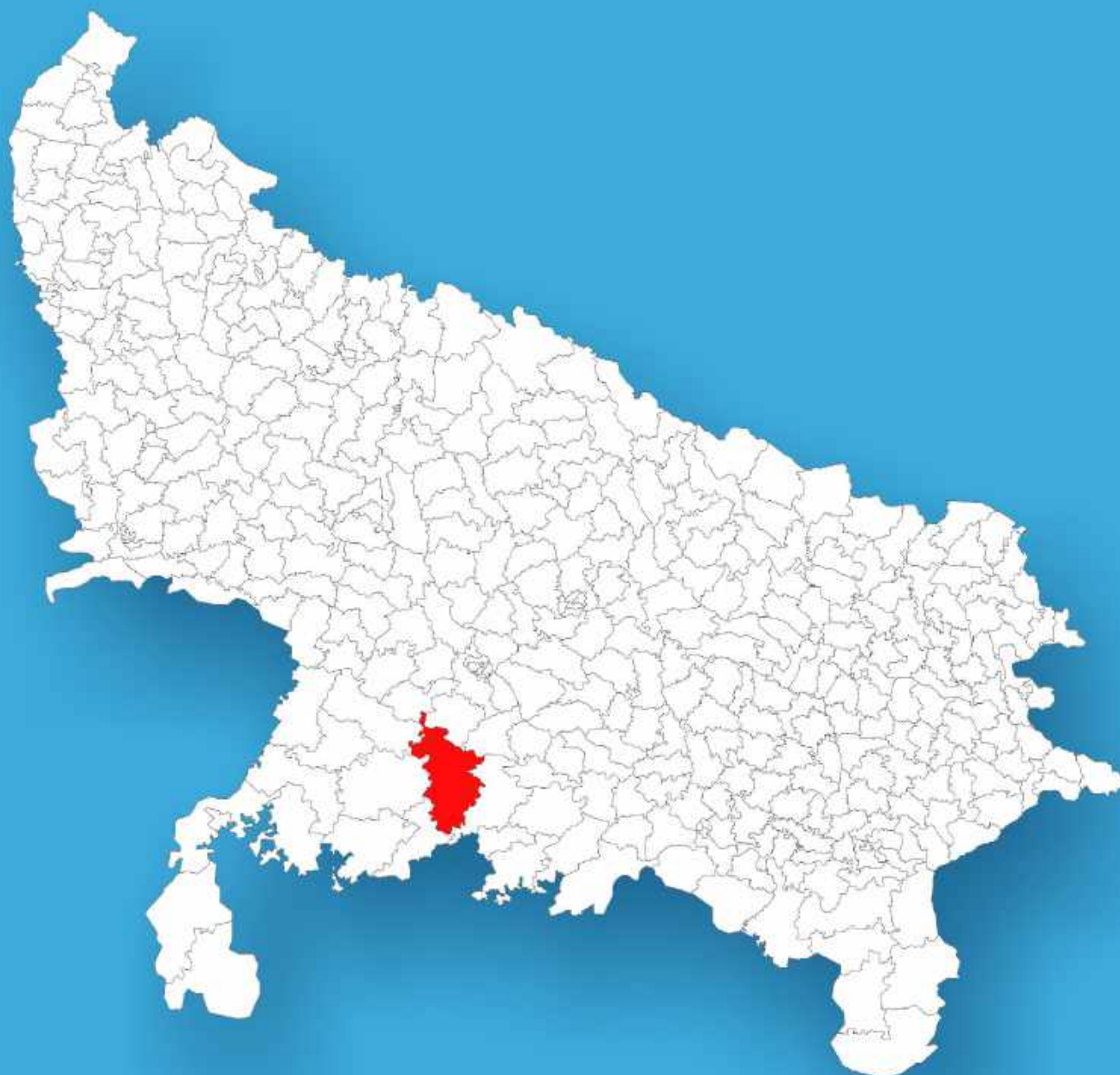




Uttar Pradesh

Assembly Factbook™

Hamirpur Assembly Constituency



Key Electoral Data of Hamirpur
Assembly Constituency (Vidhan Sabha)

Uttar Pradesh

Assembly Factbook™

Hamirpur Assembly Constituency



Hamirpur Vidhan Sabha

Editor & Director

Dr. R.K. Thukral

Research Editor

Dr. Shafeeq Rahman

**Compiled, Researched and Published by
Datanet India Pvt. Ltd.**

D-100, 1st Floor,

Okhla Industrial Area, Phase-I,

New Delhi- 110020.

Ph.: 91-11- 43580781-84

Email : support@indiastatpublications.com

Website : www.indiastatelections.com

Online Book Store :

www.indiastatpublications.com

Report No. : AFB/UP-228-0125

ISBN : 978-93-5905-761-3

First Edition : January, 2018

Eighth Updated Edition : January, 2025

Price : Rs.11500/-

US\$ 310

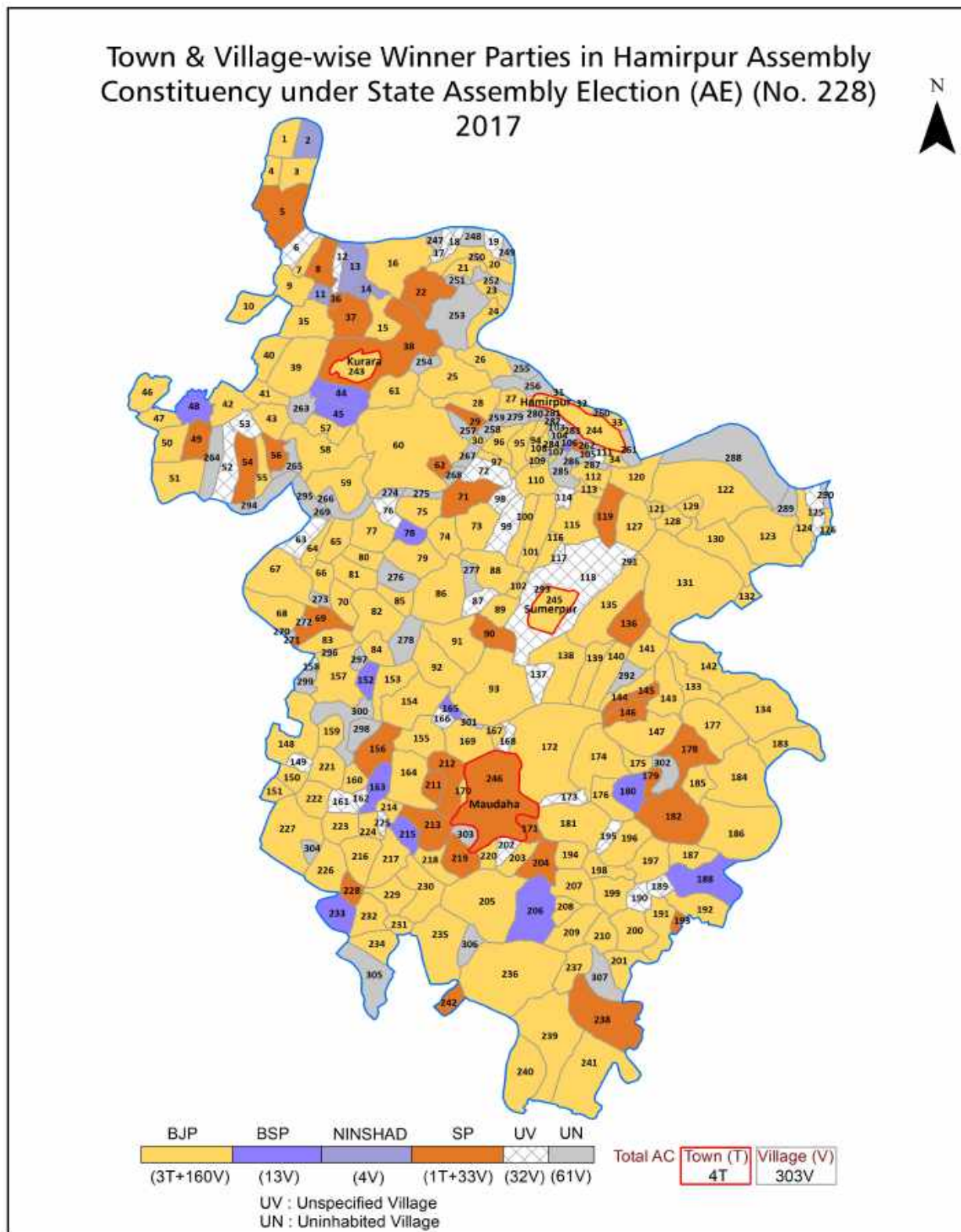
© Datanet India Pvt. Ltd.

All rights reserved. No part of this book may be reproduced, stored in a retrieval system or transmitted in any form or by any means, mechanical photocopying, photographing, scanning, recording or otherwise without the prior written permission of the publisher. Please refer to Disclaimer at page no. 361 for the use of this publication.

Printed in India

No.	Particulars	Page No.
	Introduction	
1	Assembly Constituency - (Vidhan Sabha) at a Glance Features of Assembly as per Delimitation Commission of India (2008)	1-2
	Location and Political Maps	
2	Location Map Boundaries of Assembly Constituency - (Vidhan Sabha) in District Boundaries of Assembly Constituency under Parliamentary Constituency - (Lok Sabha) Town & Village-wise Winner Parties-2024, 2022, 2019, 2017, 2014, 2012 and 2009	3-11
	Administrative Setup (2011)	
3	District Sub-district Towns Villages Inhabited Villages Uninhabited Villages Village Panchayat Intermediate Panchayat	12-24
	Demographics (2011)	
4	Population Households Rural/Urban Population Towns and Villages by Population Size Sex Ratio (Total & 0-6 Years) Religious Population Social Population Literacy Rate	25-26
	Electoral Features	
5	Important Dates of Last Elections Held Electors by Gender Service Electors Voters Voters Turnout Polling Stations & Average Number of Electors per Polling Station Electors by Age Group Present Elected Representatives	27-32
	Historical Summary Election Results	
6	Vote Share of Major Parties Winning Margin (Number & Percentage) Polarity of Parties Summary Result of Assembly Segment of Parliamentary Election 2024, 2019, 2014, 2009, 2004 and 1999 Summary Result of Assembly Elections 2022, 2017, 2012, 2007, 2002, 1996, 1993, 1991, 1989, 1985, 1980, 1977, 1974, 1969, 1967, 1962, 1957 and 1952	33-58
	Polling Station Level Election Results	
7	Name and Number of Polling Station 2024, 2022, 2019, 2017, 2014, 2012 and 2009 Polling Station-wise Electors, Voters & Voters Turnout 2024, 2022, 2019, 2017, 2014, 2012 and 2009 Polling Station wise Elections Results 2024, 2022, 2019, 2017, 2014, 2012 and 2009	59-316
8	Panchayat and Local Bodies Election Results Panchayat Result 2015 Urban Local Bodies Result 2012	317-339
	Share of Assembly Constituency	
9	Share of Assembly Constituency - (Vidhan Sabha) in State, District and Parliamentary Constituency - (Lok Sabha)	340
	Socio-Economic Amenities (2011)	
10	Access to Administrative Units Agricultural, Manufacturing and Industrial Commodities Demographic Indicators Education Health & Manpower Drinking Water Supply Sanitation Entertainment and Recreations Infrastructure Power Food Allocation Distribution and Marketing of Agriculture Commodities Infrastructure Transport and Road Infrastructure Communication Banking and Financial Services Land Use Irrigation Source	342-356
11	Abbreviation & Sources	357-360
12	Disclaimer	361

Location & Political Map



Administrative Setup

List of Village Panchayat & Intermediate Panchayat (Block) Name - 2011

Village Name	Village Panchayat Name	Intermediate Panchayat Name
Achhrela	Rorahi	Maudaha
Akhaipur	Bibhauri	Maudaha
Amirta	Amirta	Sumerpur
Artra	Aratara	Maudaha
Asuai	Masgawan	Maudaha
Atraia	Atraiya	Sumerpur
Atrar	Atrar	Sumerpur
Bachrauli	Bachhrauli	Kurara
Bada Gaon	Badagaon	Sumerpur
Badanpur	Kanauta	Kurara
Badanpur	Badanpur	Sumerpur
Bahrauli Danda	Kumhaupur	Sumerpur
Baije Islampur	Deviganj	Kurara
Baije Mau	Belemau	Maudaha
Bainsa Pali	Bhaisapali	Kurara
Bakchha	Kher	Maudaha
Bamhanpur	Kutubupur	Kurara
Bamhrauli	Bamhrauli	Maudaha
Banda	Banda	Sumerpur
Bank	Bank	Sumerpur
Banki	Banki	Sumerpur
Bardaha Sahijana Danda	Bardaha Sahjana	Sumerpur
Barua	Baruwa	Kurara
Barua	Baruwa	Sumerpur
Behrela	Raurohati	Maudaha
Beri	Beri	Kurara
Bhabhani	Bhawani	Maudaha
Bhabhaura	Bhamaura	Sumerpur
Bhabhaura	Bhaura	Maudaha

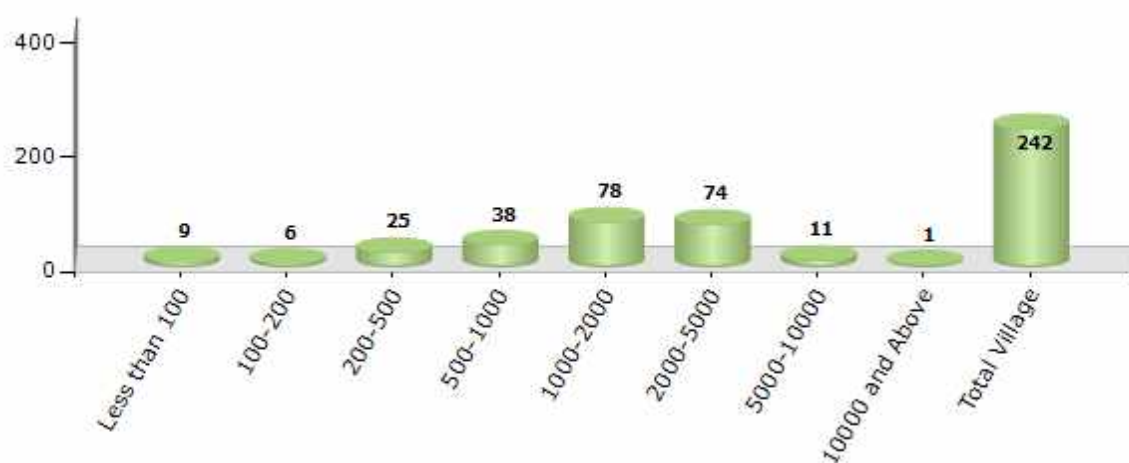
Contd....

Demographics

Number of Villages by Population Size - 2011

Less than 100	100-200	200-500	500-1000	1000-2000	2000-5000	5000-10000	10000 and Above	Total Village
9	6	25	38	78	74	11	1	242

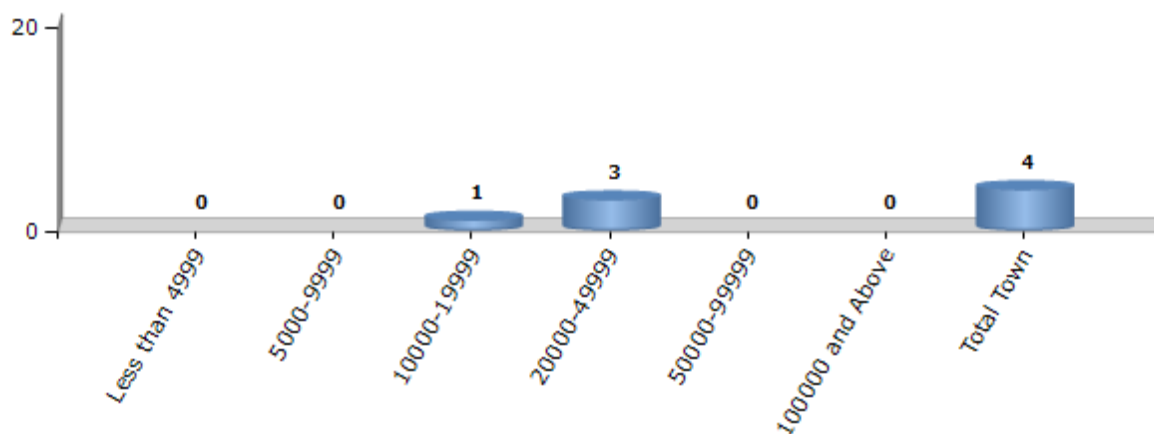
Number of Villages by Population Size - 2011



Number of Towns by Population Size - 2011

Less than 4999	5000-9999	10000-19999	20000-49999	50000-99999	100000 and Above	Total Town
0	0	1	3	0	0	4

Number of Towns by Population Size - 2011



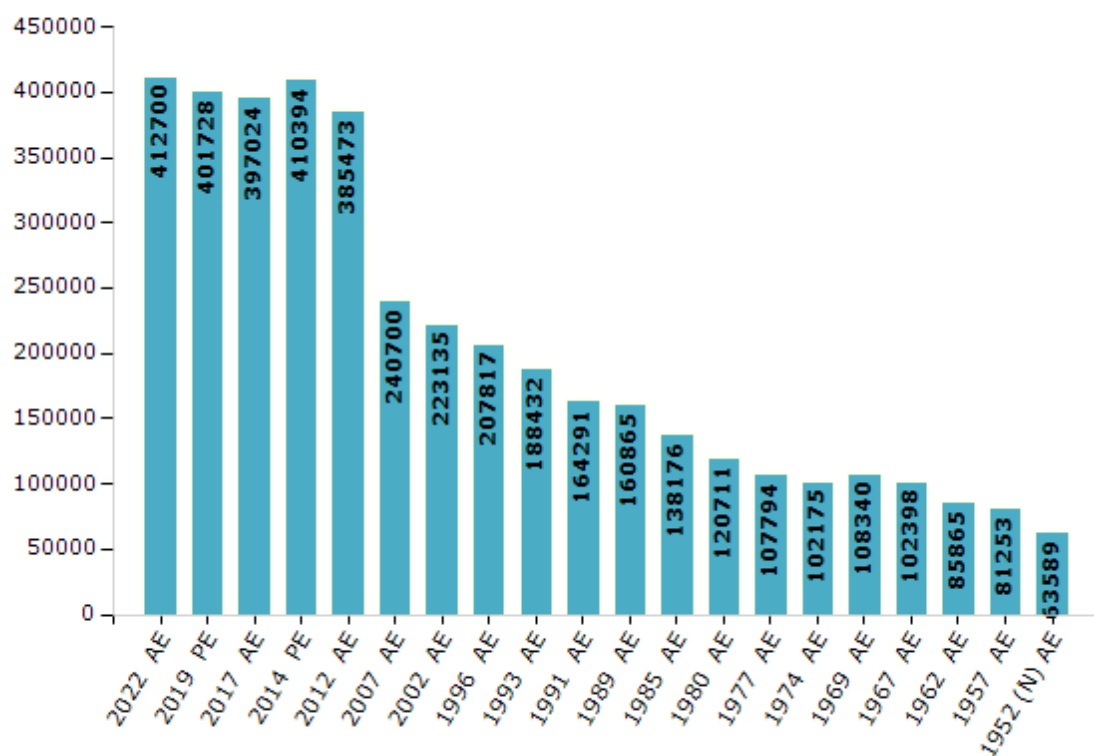
Electoral Features

Electors by Male & Female

Year	Male	Female	Others	Total
2022 AE	226074	186622	4	412700
2019 PE	220357	181361	10	401728
2017 AE	216713	180302	9	397024
2014 PE	222586	187801	7	410394
2012 AE	215102	170367	4	385473
2009 PE	-	-	-	-
2007 AE	133209	107491	-	240700
2004 PE	-	-	-	-
2002 AE	124222	98913	-	223135
1999 PE	-	-	-	-
1996 AE	114312	93505	-	207817
1993 AE	103968	84464	-	188432

Year	Male	Female	Others	Total
1991 AE	92180	72111	-	164291
1989 AE	90696	70169	-	160865
1985 AE	76460	61716	-	138176
1980 AE	66413	54298	-	120711
1977 AE	56767	51027	-	107794
1974 AE	53621	48554	-	102175
1969 AE	57324	51016	-	108340
1967 AE	-	-	-	102398
1962 AE	-	-	-	85865
1957 AE	-	-	-	81253
1952 (N) AE	-	-	-	63589

Number of Electors



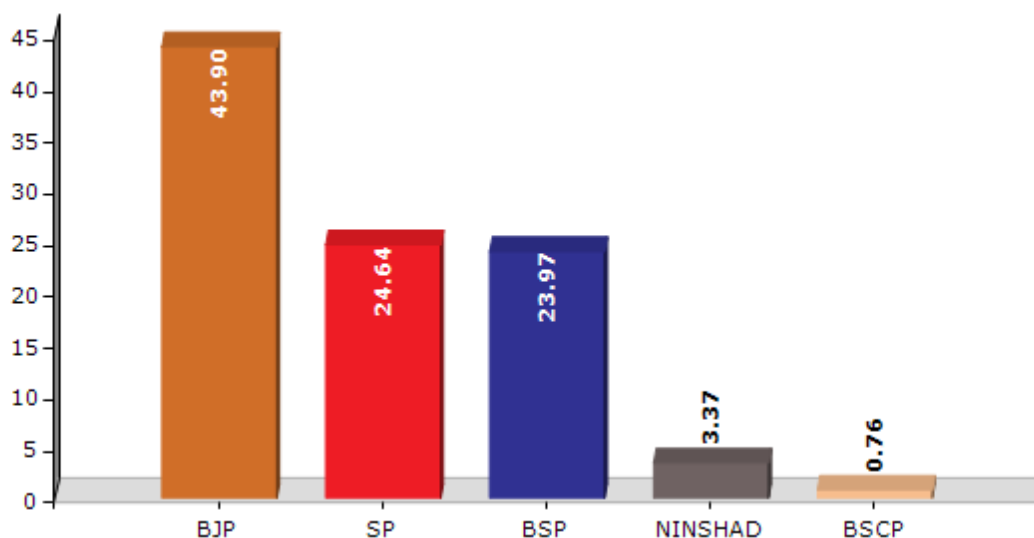
Note : AE : Assembly Election, PE : Assembly Segment of Parliamentary Election, (N) : Hamirpur Cum Maudaha North

Historical Summary Election Results

Summary Result of Assembly Election - 2017

Candidate Name	Party	Votes	Votes %
Ashok Kumar Singh Chandel	BJP	110888	43.9
Dr. Manoj Kumar Prajapati	SP	62233	24.64
Sanjeev Kumar Urf Sanjay Dixit	BSP	60543	23.97
Anuddin (Maulana Khan)	NINSHAD	8513	3.37
Dharmendra	BSCP	1931	0.76
Ramakant	IND	1022	0.4
Lallu Prasad	IND	990	0.39
Om Prakash	BMUP	912	0.36
Maheshwarideen	JANADIP	841	0.33
Jamal Alam	VIP	748	0.3
Ram Milan	ADRSP	629	0.25
	NOTA	3356	1.33

Votes Percentage of Top Parties - 2017



Polling Station Level Election Results

Number and Name of Polling Stations (PS) (2022)

Number of Polling Stations	Name of Polling Stations	Number of Polling Stations	Name of Polling Stations
1	Upper Primary School (01 To 08) Manki Khurd	22	Primary School Lahra Room No. 02
2	Upper Primary School (01 To 08) Manki Kalan	23	Primary School Kharehata
3	Primary School Umrahat	24	Upper Primary School (01 To 08) Beri Room No. 01
4	Primary School Haraulipur	25	Upper Primary School (01 To 08) Beri Room No. 02
5	Upper Primary School Mishripur Room No. 01	26	Upper Primary School (01 To 08) Beri Room No. 03
6	Upper Primary School Mishripur Room No. 02	27	Upper Primary School (01 To 08) Deviganj
7	Upper Primary School Dadri	28	Upper Primary School (01 To 08) Baijeislampur
8	Primary School Shivni	29	Primary School Kakrau Room No. 01
9	Girls Primary School Shivni	30	Primary School Kakrau Room No. 02
10	Upper Primary School (01 To 08) Baruwa	31	Primary School Kariyapur
11	Primary School Simra	32	Primary School Gujraura
12	Girls Upper Primary School Kutubpur Room No. 01	33	Primary School Kusauli
13	Girls Upper Primary School Kutubpur Room No. 02	34	Primary School Jakhela
14	Primary School Mangalpur	35	Primary School Indpuri
15	Primary School Todarpur	36	Primary School Kandaur Room No. 01
16	Upper Primary School (01 To 08) Sarsai	37	Primary School Kandaur Room No. 02
17	Upper Primary School (01 To 08) Damar Room No. 01	38	Shriram Kanchanlal Saguna Inter College Para Room No. 01
18	Upper Primary School (01 To 08) Damar Room No. 02	39	Shriram Kanchanlal Saguna Inter College Para Room No. 02
19	Upper Primary School (01 To 08) Bhainsapali	40	Upper Primary School Shankarpur
20	Primary School Pali	41	Primary School Jalla
21	Primary School Lahra Room No. 01	42	Primary School Chakothi

Contd....

Polling Station Level Election Results

Polling Station-wise Votes Secured by Overall Top Five Parties in Hamirpur Assembly in Assembly Election (AE) under Hamirpur Parliamentary Constituency in Uttar Pradesh (2022)

Number of Polling Station	Winner - Dr. Manoj Kumar Prajapati (BJP)	Runner-up - Ram Prakash Prajapati (SP)	3rd - Ram Phool Nishad (BSP)	4th - Raj Kumari Singh Chandel (INC)	5th - Vijay Dwivedi Advocate (JANADIP)	NOTA	Other	Total Votes Secured
36	113	163	142	45	2	7	22	494
37	189	99	99	57	4	7	21	476
38	148	113	109	26	3	3	8	410
39	109	173	124	39	0	6	9	460
40	73	265	130	4	0	2	15	489
41	270	223	89	54	13	3	11	663
42	103	132	245	30	102	4	21	637
43	285	227	162	32	24	7	25	762
44	325	166	177	52	5	7	10	742
45	109	92	169	24	3	5	8	410
46	273	115	117	40	3	7	14	569
47	224	92	48	26	6	1	8	405
48	110	38	259	43	2	2	8	462
49	281	87	44	21	2	1	9	445
50	264	191	78	41	0	1	3	578
51	336	73	14	20	0	1	3	447
52	324	156	126	40	3	2	8	659
53	130	175	264	29	0	8	4	610
54	70	60	211	15	0	4	4	364
55	347	147	123	10	2	10	16	655
56	0	251	1	7	0	0	3	262
57	102	138	158	82	4	7	15	506
58	168	369	182	10	11	4	9	753
59	196	355	82	25	10	7	9	684
60	69	18	240	6	1	3	8	345
61	175	43	411	4	1	7	14	655
62	161	113	113	18	3	5	15	428
63	41	371	213	9	0	3	12	649
64	330	135	6	10	1	0	11	493
65	325	175	120	34	2	5	16	677
66	182	269	121	18	1	7	14	612
67	108	40	199	7	2	2	9	367
68	473	37	43	36	6	8	12	615
69	120	176	62	27	1	3	4	393
70	171	122	92	35	1	4	16	441

Contd....

Polling Station Level Election Results

Winner, Runner-up and 3rd Party Position & Winning Margin According to Polling Stations in Hamirpur Assembly in Assembly Election (AE) under Hamirpur Parliamentary Constituency in Uttar Pradesh (2022)

Polling Station Number	Winner Party	Winner Votes (%)	Runner-up Party	Runner-up Votes (%)	Winning Margin Votes (%)	Third Party	Third Party Votes (%)	Other Votes (%)
71	BJP	352 (51.76)	BSP	182 (26.76)	170 (25)	SP	111 (16.32)	35 (5.15)
72	SP	195 (41.23)	BJP	149 (31.5)	46 (9.73)	BSP	103 (21.78)	26 (5.5)
73	BSP	291 (68.63)	BJP	77 (18.16)	214 (50.47)	SP	31 (7.31)	25 (5.9)
74	SP	248 (45.59)	BJP	185 (34.01)	63 (11.58)	BSP	46 (8.46)	65 (11.95)
75	BJP	204 (48.34)	BSP	106 (25.12)	98 (23.22)	INC	47 (11.14)	65 (15.4)
76	BJP	127 (37.8)	SP	108 (32.14)	19 (5.66)	BSP	57 (16.96)	44 (13.1)
77	SP	253 (42.66)	BJP	165 (27.82)	88 (14.84)	BSP	127 (21.42)	48 (8.09)
78	BSP	194 (34.34)	SP	144 (25.49)	50 (8.85)	BJP	141 (24.96)	86 (15.22)
79	SP	374 (65.85)	BSP	126 (22.18)	248 (43.67)	BJP	27 (4.75)	41 (7.22)
80	BSP	168 (35.44)	SP	146 (30.8)	22 (4.64)	BJP	95 (20.04)	65 (13.71)
81	BJP	307 (69.46)	BSP	61 (13.8)	246 (55.66)	INC	34 (7.69)	40 (9.05)
82	SP	278 (38.4)	BJP	213 (29.42)	65 (8.98)	BSP	135 (18.65)	98 (13.54)
83	BJP	345 (45.28)	SP	255 (33.46)	90 (11.82)	INC	108 (14.17)	54 (7.09)
84	SP	292 (41.3)	BJP	235 (33.24)	57 (8.06)	BSP	85 (12.02)	95 (13.44)
85	BJP	303 (44.43)	BSP	123 (18.04)	180 (26.39)	SP	115 (16.86)	141 (20.67)
86	BJP	193 (34.04)	BSP	169 (29.81)	24 (4.23)	SP	118 (20.81)	87 (15.34)
87	BJP	212 (34.53)	SP	145 (23.62)	67 (10.91)	INC	88 (14.33)	169 (27.52)
88	BJP	311 (61.46)	SP	96 (18.97)	215 (42.49)	BSP	69 (13.64)	30 (5.93)
89	BSP	286 (48.97)	BJP	226 (38.7)	60 (10.27)	SP	26 (4.45)	46 (7.88)
90	SP	220 (64.9)	BSP	91 (26.84)	129 (38.06)	BJP	23 (6.78)	5 (1.47)
91	SP	92 (30.36)	BJP	74 (24.42)	18 (5.94)	BSP	63 (20.79)	74 (24.42)
92	SP	516 (75.77)	BJP	69 (10.13)	447 (65.64)	BSP	43 (6.31)	53 (7.78)
93	BJP	220 (40.97)	BSP	134 (24.95)	86 (16.02)	SP	117 (21.79)	66 (12.29)
94	SP	200 (42.28)	BJP	147 (31.08)	53 (11.2)	INC	54 (11.42)	72 (15.22)
95	BJP	186 (46.38)	SP	80 (19.95)	106 (26.43)	BSP	59 (14.71)	76 (18.95)
96	BJP	288 (59.75)	BSP	142 (29.46)	146 (30.29)	INC	26 (5.39)	26 (5.39)
97	SP	283 (42.88)	BJP	235 (35.61)	48 (7.27)	BSP	69 (10.45)	73 (11.06)
98	BJP	313 (64.01)	SP	70 (14.31)	243 (49.7)	BSP	49 (10.02)	57 (11.66)
99	BJP	319 (75.24)	INC	49 (11.56)	270 (63.68)	SP	38 (8.96)	18 (4.25)
100	SP	246 (45.9)	BJP	220 (41.04)	26 (4.86)	INC	46 (8.58)	24 (4.48)
101	BJP	259 (56.55)	SP	130 (28.38)	129 (28.17)	INC	49 (10.7)	20 (4.37)
102	SP	367 (46.63)	BJP	335 (42.57)	32 (4.06)	INC	39 (4.96)	46 (5.84)
103	SP	374 (65.27)	BJP	149 (26)	225 (39.27)	BSP	32 (5.58)	18 (3.14)
104	BJP	282 (49.74)	SP	160 (28.22)	122 (21.52)	INC	61 (10.76)	64 (11.29)
105	BJP	310 (40.36)	SP	279 (36.33)	31 (4.03)	BSP	134 (17.45)	45 (5.86)

Contd....

Socio-Economic Amenities - Rural

Access to Education Facilities

Particulars	Number of Villages (% of Population)				
	Available	Not Available	If Not Available (Distance of Nearest Facility)		
			A	B	C
Govt. Primary School	208 (91)	34 (9)	9 (1)	0 (0)	1 (0)
Private Primary School	33 (22)	209 (78)	2 (0)	0 (0)	1 (0)
Govt. Middle School	153 (79)	89 (21)	51 (8)	6 (2)	4 (1)
Private Middle School	22 (19)	220 (81)	5 (1)	1 (0)	1 (0)
Govt. Secondary School	13 (9)	229 (91)	26 (7)	46 (16)	44 (17)
Private Secondary School	14 (11)	228 (89)	38 (12)	29 (13)	18 (9)
Govt. Senior Secondary School	7 (5)	235 (95)	19 (6)	75 (29)	61 (21)
Private Senior Secondary School	5 (5)	237 (95)	17 (5)	23 (13)	24 (10)
Govt. Arts and Science Degree College	1 (0)	241 (100)	17 (5)	46 (18)	94 (36)
Private Arts and Science Degree College	1 (0)	241 (100)	14 (4)	18 (10)	25 (14)
Govt. Engineering College	0 (0)	242 (100)	1 (0)	6 (3)	163 (66)
Private Engineering College	1 (0)	241 (100)	4 (1)	2 (1)	34 (16)
Govt. Medicine College	0 (0)	242 (100)	1 (0)	9 (3)	189 (79)
Private Medicine College	0 (0)	242 (100)	0 (0)	0 (0)	6 (2)
Govt. Management Institute	0 (0)	242 (100)	0 (0)	2 (1)	164 (69)
Private Management Institute	0 (0)	242 (100)	1 (0)	0 (0)	17 (6)
Govt. Polytechnic	0 (0)	242 (100)	3 (1)	5 (2)	188 (80)
Private Polytechnic	0 (0)	242 (100)	1 (0)	0 (0)	9 (4)
Govt. Vocational Training School/ITI	0 (0)	242 (100)	2 (1)	5 (1)	176 (72)
Private Vocational Training School/ITI	1 (1)	241 (99)	1 (0)	0 (0)	7 (3)
Govt. Non Formal Training Centre	0 (0)	242 (100)	2 (0)	1 (0)	105 (48)
Private Non Formal Training Centre	0 (0)	242 (100)	1 (0)	0 (0)	2 (1)
Govt. School For Disabled	0 (0)	242 (100)	0 (0)	2 (1)	121 (52)
Private School For Disabled	0 (0)	242 (100)	1 (0)	0 (0)	3 (1)
Government Others	0 (0)	242 (100)	1 (0)	1 (1)	19 (8)
Private Others	0 (0)	242 (100)	1 (0)	0 (0)	0 (0)

Note : Distance A : Less than 5 km; B : Between 5-10 km; C : 10+ km.; Source : Data Analysis is based on 2011 Census.

DISCLAIMER

The Terms of Use and Disclaimer of Datanet India Private Limited (hereinafter referred to as "Datanet") for use of this analysis report of **Hamirpur Assembly Constituency (Hamirpur Vidhan Sabha)** :-

1. **Assembly Factbook™** is a Registered Trade Mark owned by Datanet.
2. All the maps are sketched and graphical representation only and have not been drawn to the scale and also not to represent the actual geographical area or boundary of the unit.
3. The data for the aforesaid analysis is based on authentic sources and has been culled from the various publications of Census, CSO and NSSO for district and block level data, various central and state government departments, Central & State Elections Commissions and the concerned Returning Officers' releases, Electoral Rolls, Election results and allied publications, internal assessment, surveys, estimates and analysis. Therefore, certain adjustment of data at micro level may have been done to arrive closer to the macro data.
4. Data have been provided on an "As Is" and "As AVAILABLE" basis
5. The colours shown in the maps or diagram and charts of a particular party, alliance or AC are indicative and do not represent them.
6. This publication which includes maps, sheets, graphs and data would be the property under copyright of Datanet only. The user may use these for its internal study, analysis and research purposes. It's public display, re-selling or any commercial uses by the user are not allowed.
7. Datanet has taken due care and caution in compilation and processing of data and allied information, but does not guarantee the accuracy, adequacy or completeness of any information/analysis and will be not responsible for any errors or omissions or for the results obtained from the use of such information/analysis.
8. All the contents for the publication have been culled from various authentic sources and Datanet reasonably believes such sources to be reliable, but does not make any representations, express or implied as to the accuracy or fitness of use of such information. The information or contents of the information/analysis do not constitute advice and should not be relied upon in making (or refraining from making) any decision. Any reliance placed upon the information provided by Datanet is the sole responsibility and strictly at the user's risk.
9. In no event will Datanet be liable for any damages (including, without limitation, damages for loss of business projects, or loss of profits) arising in contract, tort or otherwise from the use of or inability to use any of its contents, or from any action taken (or refrained from being taken) as a result of using the analysis or any of its contents. Datanet its directors, owners, editors, officials, employees, distributor and agents or any associate will not be liable for any errors in the information contained or any consequences arising from the use of the contents of the provided information/analysis.
10. If any provision of these terms and conditions is held invalid or illegal or unenforceable for any reason by any court of competent jurisdiction, such provision shall be severed and the remainder of provisions of the terms and conditions shall continue in full force and effect as if the Term of Use had been executed with the invalid, illegal or unenforceable provision eliminated.
11. If there are any discrepancies in the information provided, please bring it to attention of Datanet for suitable rectification measures.

Buy Online This Complete Book At
Datanet India eBooks Store

www.indiastatpublications.com

or go directly at

[http://www.indiastatpublications.com/
Assembly_factbook/Uttar Pradesh/Hamirpur/ Hamirpur](http://www.indiastatpublications.com/Assembly_factbook/Uttar%20Pradesh/Hamirpur/Hamirpur)

 **india**stat**elections**

ISBN : 978-93-5905-761-3



9 789359 057613