



Uttar Pradesh

# Assembly Factbook™

Siswa Assembly Constituency



Key Electoral Data of Siswa  
Assembly Constituency (Vidhan Sabha)

Uttar Pradesh  
**Assembly Factbook**<sup>TM</sup>  
Siswa Assembly Constituency



Siswa Vidhan Sabha

**Editor & Director**

Dr. R.K. Thukral

**Research Editor**

Dr. Shafeeq Rahman

**Compiled, Researched and Published by  
Datanet India Pvt. Ltd.**

D-100, 1st Floor,

Okhla Industrial Area, Phase-I,

New Delhi- 110020.

Ph.: 91-11- 43580781-84

Email : support@indiastatpublications.com

Website : www.indiastatelections.com

**Online Book Store :**

www.indiastatpublications.com

**Report No. :** AFB/UP-317-0123

**ISBN :** 978-93-5905-927-3

**First Edition :** January, 2018

**Sixth Updated Edition :** January, 2023

**Price :** Rs.11500/-

US\$ 310

**© Datanet India Pvt. Ltd.**

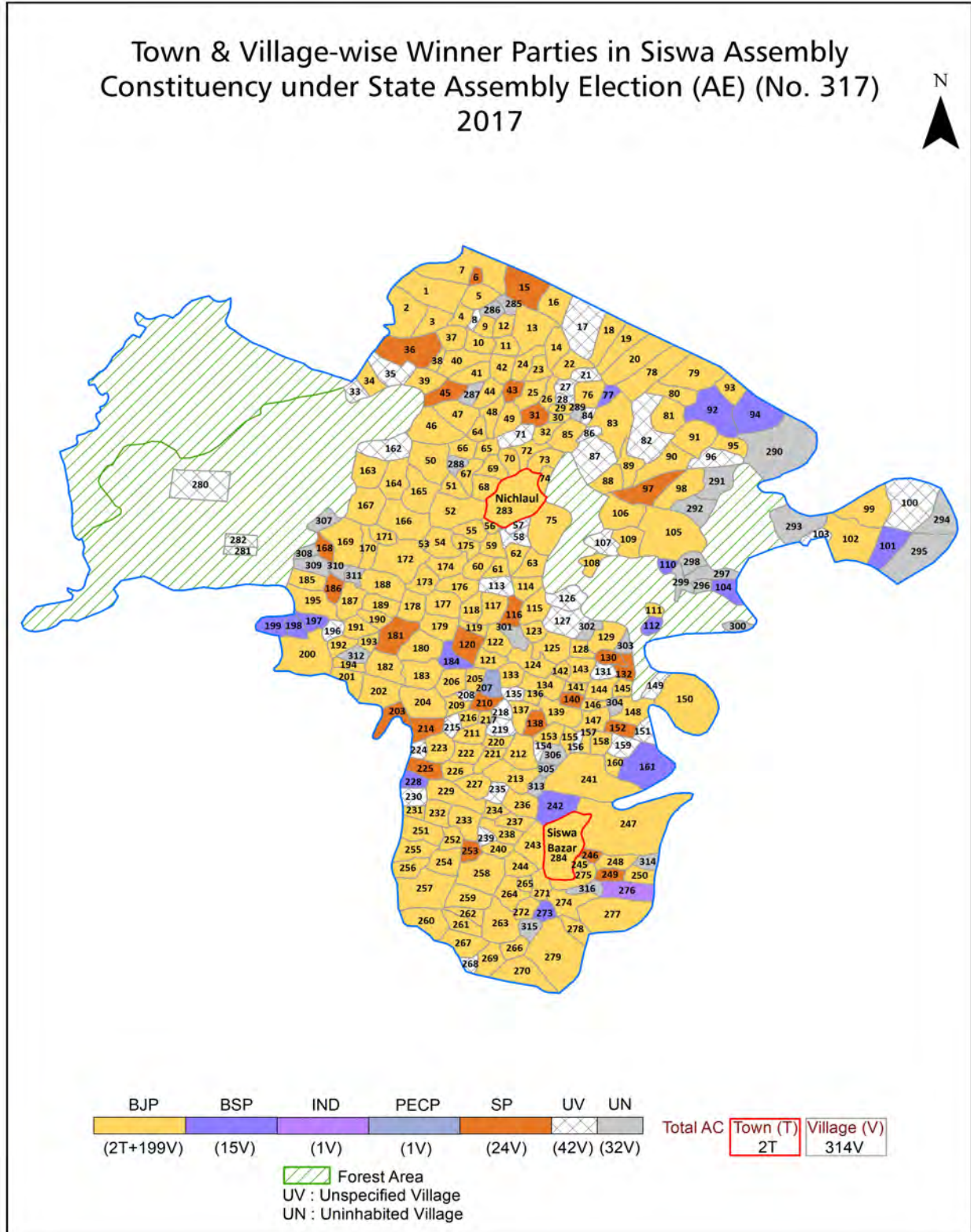
All rights reserved. No part of this book may be reproduced, stored in a retrieval system or transmitted in any form or by any means, mechanical photocopying, photographing, scanning, recording or otherwise without the prior written permission of the publisher. Please refer to Disclaimer at page no. 332 for the use of this publication.

Printed in India

## Contents

No.	Particulars	Page No.
	<b>Introduction</b>	
1	Assembly Constituency - (Vidhan Sabha) at a Glance   Features of Assembly as per Delimitation Commission of India (2008)	1-2
	<b>Location and Political Maps</b>	
2	Location Map   Boundaries of Assembly Constituency - (Vidhan Sabha) in District   Boundaries of Assembly Constituency under Parliamentary Constituency - (Lok Sabha)   Town & Village-wise Winner Parties-2022, 2019, 2017, 2014, 2012 and 2009	3-11
	<b>Administrative Setup (2011)</b>	
3	District   Sub-district   Towns   Villages   Inhabited Villages   Uninhabited Villages   Village Panchayat   Intermediate Panchayat	12-26
	<b>Demographics (2011)</b>	
4	Population   Households   Rural/Urban Population   Towns and Villages by Population Size   Sex Ratio (Total & 0-6 Years)   Religious Population   Social Population   Literacy Rate	27-28
	<b>Electoral Features</b>	
5	Important Dates of Last Elections Held   Electors by Gender   Service Electors   Voters   Voters Turnout   Polling Stations & Average Number of Electors per Polling Station   Electors by Age Group   Present Elected Representatives	29-34
	<b>Historical Summary Election Results</b>	
6	Vote Share of Major Parties   Winning Margin (Number & Percentage)   Polarity of Parties   Summary Result of Assembly Segment of Parliamentary Election 2019, 2014, 2009, 2004 and 1999   Summary Result of Assembly Elections 2022, 2017, 2012, 2007, 2002, 1996, 1993, 1991, 1989, 1985, 1980, 1977, 1974, 1969 and 1967	35-58
	<b>Polling Station Level Election Results</b>	
7	Name and Number of Polling Station 2022, 2019, 2017, 2014, 2012 and 2009   Polling Station-wise Electors, Voters & Voters Turnout 2022, 2019, 2017, 2014, 2012 and 2009   Polling Station wise Elections Results 2022, 2019, 2017, 2014, 2012 and 2009	59-289
	<b>Panchayat and Local Bodies Election Results</b>	
8	Panchayat Result 2015   Urban Local Bodies Result 2012	290-310
	<b>Share of Assembly Constituency</b>	
9	Share of Assembly Constituency - (Vidhan Sabha) in State, District and Parliamentary Constituency - (Lok Sabha)	311
	<b>Socio-Economic Amenities (2011)</b>	
10	Access to Administrative Units   Agricultural, Manufacturing and Industrial Commodities   Demographic Indicators   Education   Health & Manpower   Drinking Water Supply   Sanitation   Entertainment and Recreations Infrastructure   Power   Food Allocation Distribution and Marketing of Agriculture Commodities Infrastructure   Transport and Road Infrastructure   Communication   Banking and Financial Services   Land Use   Irrigation Source	313-327
11	<b>Abbreviation &amp; Sources</b>	328-331
12	<b>Disclaimer</b>	332

Location & Political Map



## Administrative Setup

### List of Village Panchayat & Intermediate Panchayat (Block) Name - 2011

Village Name	Village Panchayat Name	Intermediate Panchayat Name
Agaya	Rudauli	Nichlaur
Agya	Baghi	Siswa
Amahawa	Amhava	Nichlaur
Amara Urf Jhulanipur	Amara Urf Jhulanipur	Nichlaur
Amari	Baraipurwa	Nichlaur
Amataha	Parsachak Goberhi	Mithaura
Amu Talab	Raipur	Nichlaur
Araji Bairia	Thuthiwari	Nichlaur
Araji Hira Kathik	Baraipurwa	Nichlaur
Ardauna	Ardona	Nichlaur
Auratar	Aoratar	Mithaura
Badahari	Barhari	Nichlaur
Bagahi	Baghi	Siswa
Bahrauli	Bahrauli	Nichlaur
Bahua Kalan	Bahuarkala	Nichlaur
Bahuar Khurd	Bahuar Kalan	Nichlaur
Baidauli	Badauli	Nichlaur
Baijnath Pur	Baijnath Pur	Siswa
Baithpurwa Urf Gauri	Badhei Purwa	Siswa
Baithwaliya	Baithwaliya	Nichlaur
Bajahi	Baghi	Nichlaur
Bakul Diha	Bakuldeeh	Nichlaur
Balhi Khor	Kalhiako	Nichlaur
Bali	Obari	Nichlaur
Baliawa	Udauli	Siswa
Bandi	Bishunpura	Nichlaur
Bandi	Bandani	Siswa
Bankatwa	Ovari	Nichlaur
Banmiswa	Banmiswa	Nichlaur

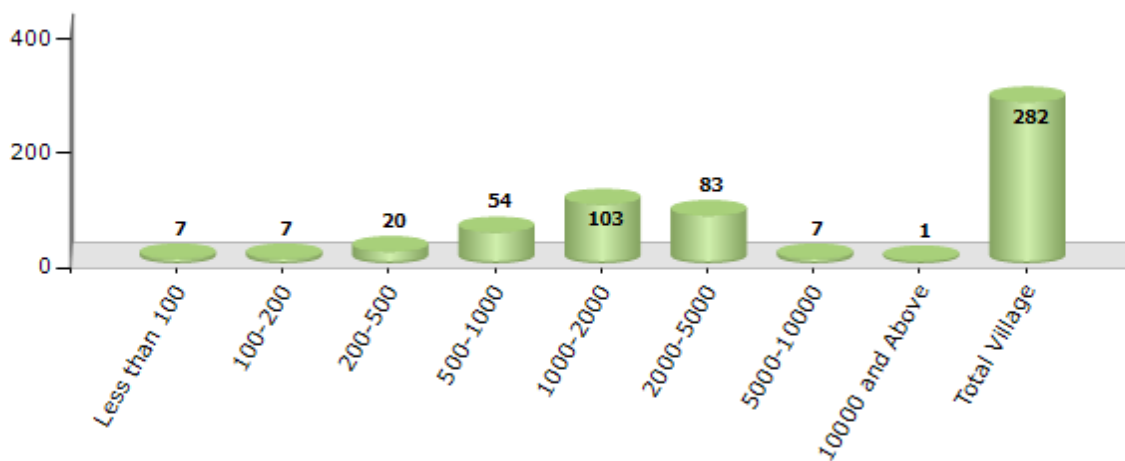
Contd....

## Demographics

### Number of Villages by Population Size - 2011

Less than 100	100-200	200-500	500-1000	1000-2000	2000-5000	5000-10000	10000 and Above	Total Village
7	7	20	54	103	83	7	1	282

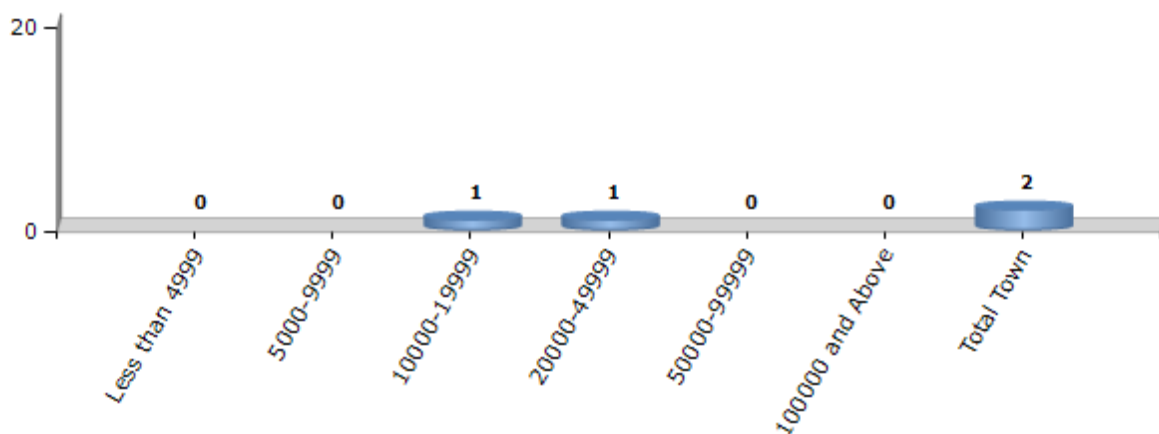
Number of Villages by Population Size - 2011



### Number of Towns by Population Size - 2011

Less than 4999	5000-9999	10000-19999	20000-49999	50000-99999	100000 and Above	Total Town
0	0	1	1	0	0	2

Number of Towns by Population Size - 2011

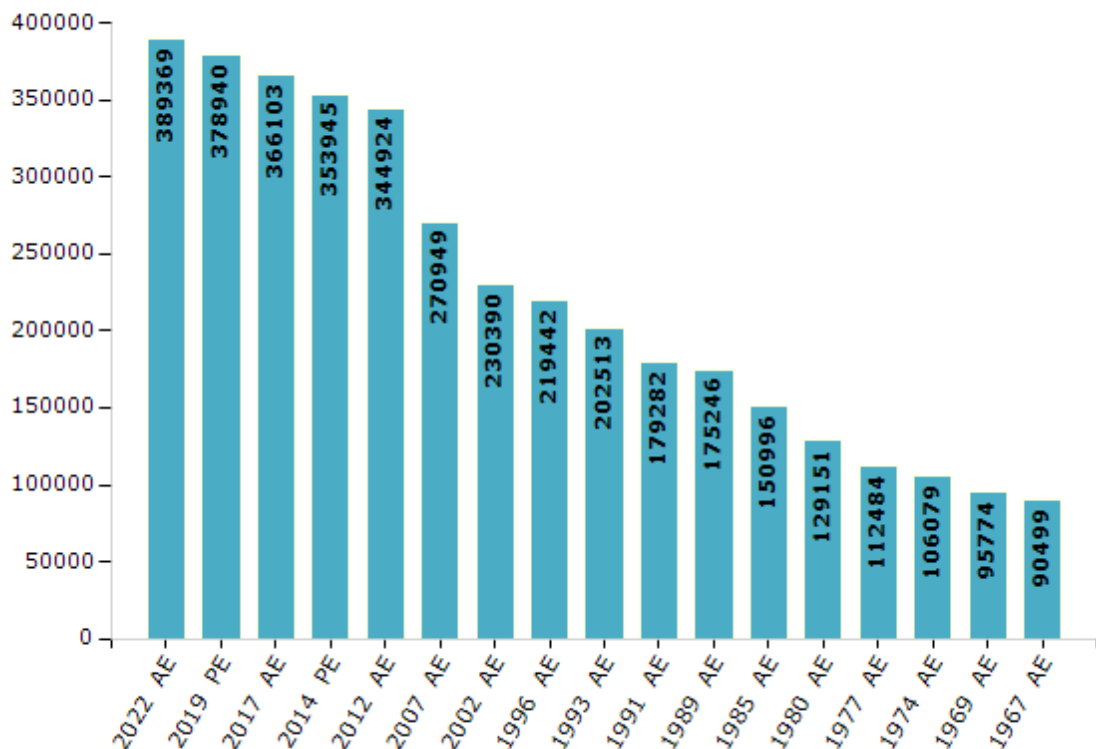


## Electoral Features

### Electors by Male & Female

Year	Male	Female	Others	Total	Year	Male	Female	Others	Total
2022 AE	206226	183130	13	389369	1991 AE	102360	76922	-	179282
2019 PE	202473	176456	11	378940	1989 AE	99774	75472	-	175246
2017 AE	197299	168796	8	366103	1985 AE	87154	63842	-	150996
2014 PE	191707	162231	7	353945	1980 AE	70389	58762	-	129151
2012 AE	188589	156335	0	344924	1977 AE	59286	53198	-	112484
2009 PE	-	-	-	-	1974 AE	55758	50321	-	106079
2007 AE	148819	122130	-	270949	1969 AE	46952	48822	-	95774
2004 PE	-	-	-	-	1967 AE	-	-	-	90499
2002 AE	125661	104729	-	230390	1962 AE	-	-	-	-
1999 PE	-	-	-	-	1957 AE	-	-	-	-
1996 AE	119522	99920	-	219442	1952 AE	-	-	-	-
1993 AE	109573	92940	-	202513					

Number of Electors



Note : AE : Assembly Election, PE : Assembly Segment of Parliamentary Election

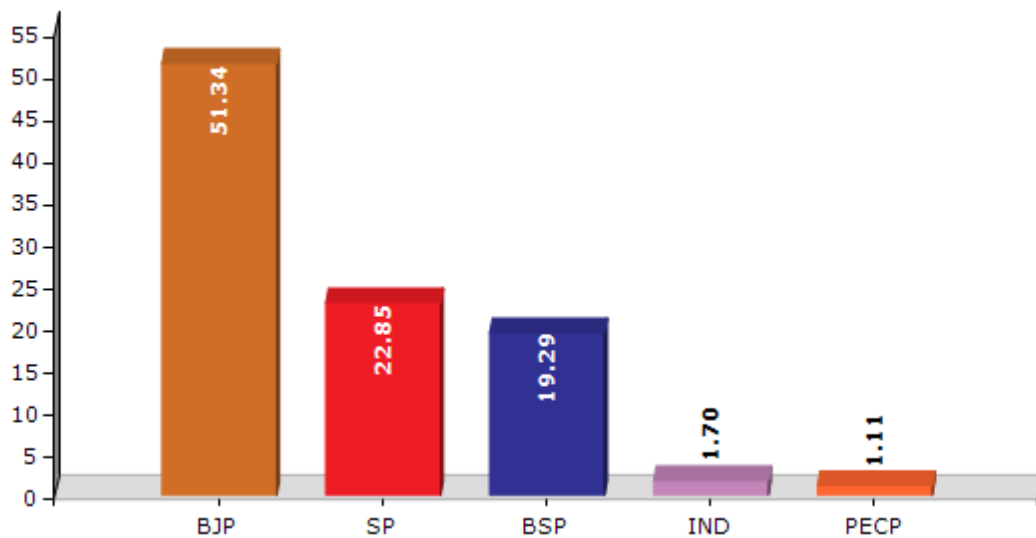


## Historical Summary Election Results

### Summary Result of Assembly Election - 2017

Candidate Name	Party	Votes	Votes %
Premnagar Patel	BJP	122884	51.34
Shivendra Singh Alias Shivbabu	SP	54698	22.85
Raghvendra Pratap Alias Ankit Singh	BSP	46185	19.29
Rakesh Kumar Alias R. K. Mishra	IND	4073	1.7
Yash Tripathi	PECP	2659	1.11
Manorama	IND	2301	0.96
Sahajad Ahamad Alias Sahajad Ali	IND	1314	0.55
Harishchandra Jaisawal Alias Harish Bhai	CPI(ML)(L)	843	0.35
Harishchandra	RLD	840	0.35
Digvijay	ASP	546	0.23
Bhuneshwar Alias Bhuvaneshwar Kumar Patel	BMUP	522	0.22
	NOTA	2501	1.04

Votes Percentage of Top Parties - 2017



## Polling Station Level Election Results

### Number and Name of Polling Stations (PS) (2022)

Number of Polling Stations	Name of Polling Stations	Number of Polling Stations	Name of Polling Stations
1	Radha Kumari Inter Collage Thuthibari Room No.-1	22	Primary School Nauliya Room No. - 2
2	Radha Kumari Inter Collage Thuthibari Room No-5	23	Primary School Lohrauli Purvi
3	Radha Kumari Inter Collage Thuthibari Room No-8	24	Primary School Lohrauli Paschimi
4	Radha Kumari Inter Collage Thuthibari Room No-2	25	Primary School Ramnagar Room No.-1
5	Radha Kumari Inter Collage Thuthibari Room No-3	26	Primary School Ramnagar Room No.-2
6	Radha Kumari Inter Collage Thuthibari Room No.-6	27	Junior High School Kishunpur
7	Junior High School Sadkahava Tola Dharmauli Thuthibari Room No-1	28	Primary School Kishunpur
8	Junior High School Sadkahava Tola Dharmauli Thuthibari Room No-2	29	Primary School Basantpur
9	Primary School Thuthibari	30	Junior High School Sobada
10	Primary School Bharwaliya	31	Primary School Bodana Room No.-1
11	Primary School Laxmipur Khurd Room No-1	32	Primary School Bodana Room No.-2
12	Primary School Laxmipur Khurd Room No.-2	33	Primary School Katkhor
13	Primary School Laxmipur Khurd Room No-3	34	Primary School Bakuldiha Room No.-1
14	Primary School Turkahiya Room No-1	35	Primary School Bakuldiha Room No.-2
15	Primary School Turkahiya Room No-2	36	Panchayat Bhawan Sukrahar
16	Primary School Rampurwa	37	Junior High School Mairi
17	Primary School Chatiya Room No-1	38	Primary School Gadaura Room No.-1
18	Primary School Chatiya Room No-2	39	Primary School Gadaura Room No-2
19	Primary School Chatiya Room No-3	40	Primary School Gadaura Room No-3
20	Primary School Kadja	41	Primary School Kardah
21	Primary School Nauliya Room No -1	42	Primary School Bhagwanpur

Contd....

## Polling Station Level Election Results

### Polling Station-wise Votes Secured by Overall Top Five Parties in Siswa Assembly in Assembly Election (AE) under Maharajganj Parliamentary Constituency in Uttar Pradesh (2022)

Number of Polling Station	Winner - Premsagar Patel (BJP)	Runner-up - Sushil Kumar Tibrewal (SP)	3rd - Dharendra Pratap Singh (BSP)	4th - Ajay Kumar Srivastava (IND)	5th - Rakesh Kumar Mishra (IND)	NOTA	Other	Total Votes Secured
36	275	235	35	44	8	5	144	746
37	245	245	51	28	17	3	26	615
38	315	82	108	6	40	7	18	576
39	503	137	26	31	14	3	21	735
40	374	16	32	3	9	1	12	447
41	331	111	124	27	21	8	29	651
42	193	270	55	47	9	3	18	595
43	412	168	21	55	40	5	27	728
44	101	151	92	26	16	4	6	396
45	132	105	200	9	7	3	7	463
46	418	132	67	78	23	5	23	746
47	292	74	134	29	14	3	20	566
48	250	82	105	19	17	6	23	502
49	218	292	60	4	17	1	11	603
50	374	118	85	18	31	1	18	645
51	157	482	40	13	12	6	14	724
52	288	308	108	9	7	3	30	753
53	340	171	6	4	6	3	15	545
54	294	129	152	1	2	5	19	602
55	446	140	19	26	20	1	28	680
56	191	173	50	13	4	3	26	460
57	192	125	102	11	9	7	9	455
58	167	133	110	8	4	4	9	435
59	408	64	115	98	7	8	36	736
60	199	155	95	14	9	0	21	493
61	174	122	144	6	14	2	13	475
62	394	103	72	5	78	6	14	672
63	389	183	23	32	9	0	19	655
64	114	113	250	64	8	7	14	570
65	324	77	42	26	5	2	8	484
66	324	317	91	30	11	10	32	815
67	258	189	163	13	3	5	18	649
68	257	168	3	22	10	1	8	469
69	177	132	25	13	2	1	5	355
70	246	79	32	30	6	3	16	412

Contd....

## Polling Station Level Election Results

### Winner, Runner-up and 3rd Party Position & Winning Margin According to Polling Stations in Siswa Assembly in Assembly Election (AE) under Maharajganj Parliamentary Constituency in Uttar Pradesh (2022)

Polling Station Number	Winner Party	Winner Votes (%)	Runner-up Party	Runner-up Votes (%)	Winning Margin Votes (%)	Third Party	Third Party Votes (%)	Other Votes (%)
71	BJP	238 (57.35)	BSP	84 (20.24)	154 (37.11)	SP	44 (10.6)	49 (11.81)
72	BJP	306 (37.45)	SP	266 (32.56)	40 (4.89)	BSP	111 (13.59)	134 (16.4)
73	SP	209 (51.23)	BJP	107 (26.23)	102 (25)	BSP	59 (14.46)	33 (8.09)
74	BJP	339 (58.25)	BSP	103 (17.7)	236 (40.55)	SP	98 (16.84)	42 (7.22)
75	BJP	257 (52.77)	SP	163 (33.47)	94 (19.3)	BSP	33 (6.78)	34 (6.98)
76	BJP	484 (62.29)	SP	162 (20.85)	322 (41.44)	BSP	57 (7.34)	74 (9.52)
77	BJP	281 (37.22)	BSP	218 (28.87)	63 (8.35)	SP	203 (26.89)	53 (7.02)
78	SP	302 (56.45)	BJP	210 (39.25)	92 (17.2)	INC	8 (1.5)	15 (2.8)
79	BSP	262 (48.97)	BJP	134 (25.05)	128 (23.92)	SP	109 (20.37)	30 (5.61)
80	BJP	239 (45.87)	SP	197 (37.81)	42 (8.06)	BSP	49 (9.4)	36 (6.91)
81	BJP	255 (51.62)	SP	147 (29.76)	108 (21.86)	BSP	52 (10.53)	40 (8.1)
82	SP	332 (42.89)	BJP	311 (40.18)	21 (2.71)	BSP	48 (6.2)	83 (10.72)
83	BJP	195 (43.72)	SP	111 (24.89)	84 (18.83)	BSP	106 (23.77)	34 (7.62)
84	SP	358 (47.99)	BJP	286 (38.34)	72 (9.65)	BSP	32 (4.29)	70 (9.38)
85	BJP	405 (52.53)	SP	230 (29.83)	175 (22.7)	BSP	49 (6.36)	87 (11.28)
86	SP	319 (44.43)	BJP	193 (26.88)	126 (17.55)	BSP	166 (23.12)	40 (5.57)
87	BJP	416 (75.23)	SP	95 (17.18)	321 (58.05)	BSP	12 (2.17)	30 (5.42)
88	BJP	381 (69.65)	SP	106 (19.38)	275 (50.27)	IND (AKS)	30 (5.48)	30 (5.48)
89	BJP	307 (52.57)	SP	139 (23.8)	168 (28.77)	BSP	61 (10.45)	77 (13.18)
90	BJP	319 (65.24)	SP	102 (20.86)	217 (44.38)	IND (AKS)	20 (4.09)	48 (9.82)
91	BJP	162 (48.36)	SP	75 (22.39)	87 (25.97)	BSP	63 (18.81)	35 (10.45)
92	BJP	386 (71.48)	SP	106 (19.63)	280 (51.85)	BSP	13 (2.41)	35 (6.48)
93	BJP	147 (66.82)	SP	29 (13.18)	118 (53.64)	BSP	19 (8.64)	25 (11.36)
94	BJP	347 (47.99)	SP	208 (28.77)	139 (19.22)	BSP	121 (16.74)	47 (6.5)
95	BJP	395 (60.49)	SP	186 (28.48)	209 (32.01)	IND (RKM)	18 (2.76)	54 (8.27)
96	BSP	427 (56.86)	BJP	179 (23.83)	248 (33.03)	SP	108 (14.38)	37 (4.93)
97	BJP	316 (56.43)	BSP	80 (14.29)	236 (42.14)	SP	78 (13.93)	86 (15.36)
98	BJP	319 (60.99)	BSP	97 (18.55)	222 (42.44)	SP	52 (9.94)	55 (10.52)
99	BJP	269 (37.36)	SP	265 (36.81)	4 (0.55)	BSP	134 (18.61)	52 (7.22)
100	SP	378 (51.92)	BJP	169 (23.21)	209 (28.71)	BSP	144 (19.78)	37 (5.08)
101	BJP	403 (67.62)	SP	137 (22.99)	266 (44.63)	BSP	15 (2.52)	41 (6.88)
102	SP	316 (56.13)	BJP	153 (27.18)	163 (28.95)	BSP	78 (13.85)	16 (2.84)
103	BJP	204 (42.95)	SP	203 (42.74)	1 (0.21)	IND (AKS)	24 (5.05)	44 (9.26)
104	BJP	404 (53.09)	SP	288 (37.84)	116 (15.25)	INC	15 (1.97)	54 (7.1)
105	BJP	400 (67.45)	SP	141 (23.78)	259 (43.67)	BSP	11 (1.85)	41 (6.91)

Contd....

## Socio-Economic Amenities - Rural

### Access to Education Facilities

Particulars	Number of Villages (% of Population)				
	Available	Not Available	If Not Available (Distance of Nearest Facility)		
			A	B	C
Govt. Primary School	212 (88)	70 (12)	50 (7)	0 (0)	1 (0)
Private Primary School	34 (20)	248 (80)	2 (0)	0 (0)	0 (0)
Govt. Middle School	103 (50)	179 (50)	78 (19)	11 (4)	3 (1)
Private Middle School	24 (16)	258 (84)	26 (5)	2 (1)	1 (0)
Govt. Secondary School	16 (8)	266 (92)	76 (26)	42 (14)	10 (2)
Private Secondary School	12 (12)	270 (88)	48 (13)	23 (7)	14 (3)
Govt. Senior Secondary School	13 (7)	269 (93)	79 (26)	59 (21)	20 (5)
Private Senior Secondary School	9 (11)	273 (89)	33 (11)	17 (5)	9 (2)
Govt. Arts and Science Degree College	15 (5)	267 (95)	8 (5)	7 (3)	43 (13)
Private Arts and Science Degree College	0 (0)	282 (100)	27 (11)	64 (25)	85 (24)
Govt. Engineering College	0 (0)	282 (100)	2 (1)	0 (0)	96 (38)
Private Engineering College	0 (0)	282 (100)	3 (1)	5 (2)	155 (52)
Govt. Medicine College	0 (0)	282 (100)	2 (1)	4 (2)	244 (87)
Private Medicine College	0 (0)	282 (100)	0 (0)	0 (0)	9 (3)
Govt. Management Institute	0 (0)	282 (100)	1 (0)	0 (0)	122 (39)
Private Management Institute	0 (0)	282 (100)	1 (0)	0 (0)	49 (18)
Govt. Polytechnic	2 (2)	280 (98)	0 (0)	0 (0)	258 (92)
Private Polytechnic	0 (0)	282 (100)	0 (0)	0 (0)	4 (1)
Govt. Vocational Training School/ITI	4 (3)	278 (97)	1 (0)	1 (0)	248 (89)
Private Vocational Training School/ITI	0 (0)	282 (100)	0 (0)	0 (0)	3 (1)
Govt. Non Formal Training Centre	50 (18)	232 (82)	7 (2)	13 (4)	110 (35)
Private Non Formal Training Centre	0 (0)	282 (100)	0 (0)	1 (0)	3 (1)
Govt. School For Disabled	13 (5)	269 (95)	1 (0)	0 (0)	199 (71)
Private School For Disabled	0 (0)	282 (100)	0 (0)	0 (0)	5 (1)
Government Others	77 (25)	205 (75)	0 (0)	0 (0)	2 (1)
Private Others	0 (0)	282 (100)	1 (0)	0 (0)	0 (0)

Note : Distance A : Less than 5 km; B : Between 5-10 km; C : 10+ km.; Source : Data Analysis is based on 2011 Census.

## DISCLAIMER

The Terms of Use and Disclaimer of Datanet India Private Limited (hereinafter referred to as "Datanet") for use of this analysis report of **Siswa Assembly Constituency (Siswa Vidhan Sabha)** :-

1. **Assembly Factbook™** is a Registered Trade Mark owned by Datanet.
2. All the maps are sketched and graphical representation only and have not been drawn to the scale and also not to represent the actual geographical area or boundary of the unit.
3. The data for the aforesaid analysis is based on authentic sources and has been culled from the various publications of Census, CSO and NSSO for district and block level data, various central and state government departments, Central & State Elections Commissions and the concerned Returning Officers' releases, Electoral Rolls, Election results and allied publications, internal assessment, surveys, estimates and analysis. Therefore, certain adjustment of data at micro level may have been done to arrive closer to the macro data.
4. Data have been provided on an "As Is" and "As AVAILABLE" basis
5. The colours shown in the maps or diagram and charts of a particular party, alliance or AC are indicative and do not represent them.
6. This publication which includes maps, sheets, graphs and data would be the property under copyright of Datanet only. The user may use these for its internal study, analysis and research purposes. It's public display, re-selling or any commercial uses by the user are not allowed.
7. Datanet has taken due care and caution in compilation and processing of data and allied information, but does not guarantee the accuracy, adequacy or completeness of any information/analysis and will be not responsible for any errors or omissions or for the results obtained from the use of such information/analysis.
8. All the contents for the publication have been culled from various authentic sources and Datanet reasonably believes such sources to be reliable, but does not make any representations, express or implied as to the accuracy or fitness of use of such information. The information or contents of the information/analysis do not constitute advice and should not be relied upon in making (or refraining from making) any decision. Any reliance placed upon the information provided by Datanet is the sole responsibility and strictly at the user's risk.
9. In no event will Datanet be liable for any damages (including, without limitation, damages for loss of business projects, or loss of profits) arising in contract, tort or otherwise from the use of or inability to use any of its contents, or from any action taken (or refrained from being taken) as a result of using the analysis or any of its contents. Datanet its directors, owners, editors, officials, employees, distributor and agents or any associate will not be liable for any errors in the information contained or any consequences arising from the use of the contents of the provided information/analysis.
10. If any provision of these terms and conditions is held invalid or illegal or unenforceable for any reason by any court of competent jurisdiction, such provision shall be severed and the remainder of provisions of the terms and conditions shall continue in full force and effect as if the Term of Use had been executed with the invalid, illegal or unenforceable provision eliminated.
11. If there are any discrepancies in the information provided, please bring it to attention of Datanet for suitable rectification measures.

**Buy Online This Complete Book At**  
**Datanet India eBooks Store**

[www.indiastatpublications.com](http://www.indiastatpublications.com)

or go directly at

[http://www.indiastatpublications.com/  
Assembly\\_factbook/Uttar Pradesh/Maharajganj/ Siswa](http://www.indiastatpublications.com/Assembly_factbook/Uttar%20Pradesh/Maharajganj/Siswa)

 **india**stat**elections**

ISBN : 978-93-5905-927-3



9 789359 059273