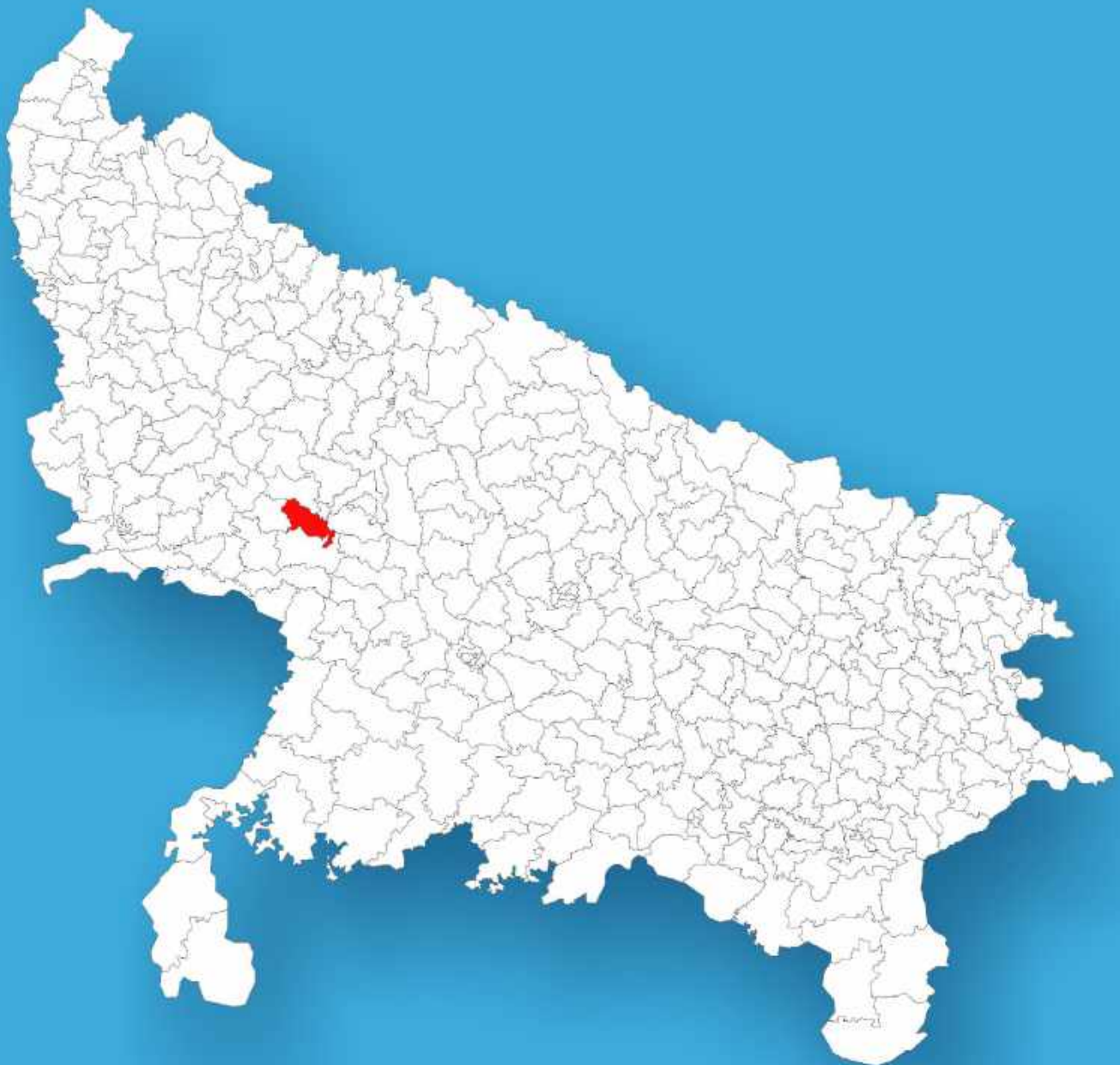




Uttar Pradesh

# Assembly Factbook™

Bhongaon Assembly Constituency



Key Electoral Data of Bhongaon  
Assembly Constituency (Vidhan Sabha)

Uttar Pradesh

# **Assembly Factbook™**

Bhongaon Assembly Constituency



Bhongaon Vidhan Sabha

**Editor & Director**

Dr. R.K. Thukral

**Research Editor**

Dr. Shafeeq Rahman

**Compiled, Researched and Published by  
Datanet India Pvt. Ltd.**

D-100, 1st Floor,

Okhla Industrial Area, Phase-I,

New Delhi- 110020.

Ph.: 91-11- 43580781-84

Email : support@indiastatpublications.com

Website : www.indiastatelections.com

**Online Book Store :**

www.indiastatpublications.com

**Report No. :** AFB/UP-108-0125

**ISBN :** 978-93-5905-184-0

**First Edition :** January, 2018

**Eighth Updated Edition :** January, 2025

**Price :** Rs.11500/-

US\$ 310

**© Datanet India Pvt. Ltd.**

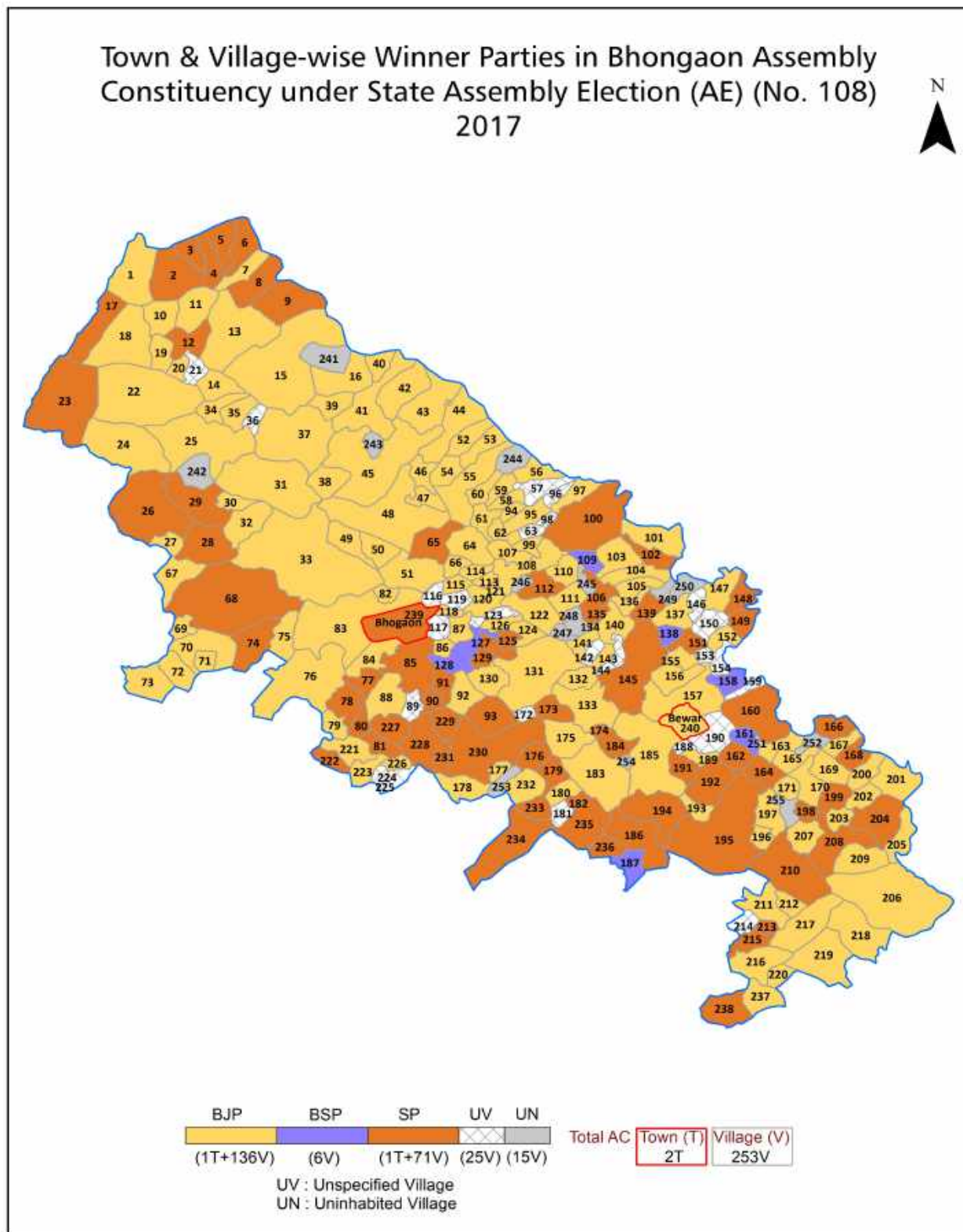
All rights reserved. No part of this book may be reproduced, stored in a retrieval system or transmitted in any form or by any means, mechanical photocopying, photographing, scanning, recording or otherwise without the prior written permission of the publisher. Please refer to Disclaimer at page no. 354 for the use of this publication.

Printed in India

No.	Particulars	Page No.
	<b>Introduction</b>	
1	Assembly Constituency - (Vidhan Sabha) at a Glance   Features of Assembly as per Delimitation Commission of India (2008)	1-2
	<b>Location and Political Maps</b>	
2	Location Map   Boundaries of Assembly Constituency - (Vidhan Sabha) in District   Boundaries of Assembly Constituency under Parliamentary Constituency - (Lok Sabha)   Town & Village-wise Winner Parties-2024, 2022, 2019, 2017, 2014, 2012 and 2009	3-11
	<b>Administrative Setup (2011)</b>	
3	District   Sub-district   Towns   Villages   Inhabited Villages   Uninhabited Villages   Village Panchayat   Intermediate Panchayat	12-24
	<b>Demographics (2011)</b>	
4	Population   Households   Rural/Urban Population   Towns and Villages by Population Size   Sex Ratio (Total & 0-6 Years)   Religious Population   Social Population   Literacy Rate	25-26
	<b>Electoral Features</b>	
5	Important Dates of Last Elections Held   Electors by Gender   Service Electors   Voters   Voters Turnout   Polling Stations & Average Number of Electors per Polling Station   Electors by Age Group   Present Elected Representatives	27-32
	<b>Historical Summary Election Results</b>	
6	Vote Share of Major Parties   Winning Margin (Number & Percentage)   Polarity of Parties   Summary Result of Assembly Segment of Parliamentary Election 2024, 2019, 2014, 2009, 2004 and 1999   Summary Result of Assembly Elections 2022, 2017, 2012, 2007, 2002, 1996, 1993, 1991, 1989, 1985, 1980, 1977, 1974, 1969, 1967, 1962 and 1957	33-59
	<b>Polling Station Level Election Results</b>	
7	Name and Number of Polling Station 2024, 2022, 2019, 2017, 2014, 2012 and 2009   Polling Station-wise Electors, Voters & Voters Turnout 2024, 2022, 2019, 2017, 2014, 2012 and 2009   Polling Station wise Elections Results 2024, 2022, 2019, 2017, 2014, 2012 and 2009	60-313
8	<b>Panchayat and Local Bodies Election Results</b> Panchayat Result 2015   Urban Local Bodies Result 2012	314-332
	<b>Share of Assembly Constituency</b>	
9	Share of Assembly Constituency - (Vidhan Sabha) in State, District and Parliamentary Constituency - (Lok Sabha)	333
	<b>Socio-Economic Amenities (2011)</b>	
10	Access to Administrative Units   Agricultural, Manufacturing and Industrial Commodities   Demographic Indicators   Education   Health & Manpower   Drinking Water Supply   Sanitation   Entertainment and Recreations Infrastructure   Power   Food Allocation Distribution and Marketing of Agriculture Commodities Infrastructure   Transport and Road Infrastructure   Communication   Banking and Financial Services   Land Use   Irrigation Source	335-349
11	<b>Abbreviation &amp; Sources</b>	350-353
12	<b>Disclaimer</b>	354



## Location & Political Map



## Administrative Setup

### List of Village Panchayat & Intermediate Panchayat (Block) Name - 2011

Village Name	Village Panchayat Name	Intermediate Panchayat Name
Adhar	Adhar	Jagir
Ahemadpur	-	Sultanganj
Ahimalpur	Ahimalpur	Bewar
Ahirwa	Ahirwa 0072	Sultanganj
Ahmadpur Karuamai	Ahmadpur Karuamai 0166	Bewar
Akbarpur Biku	Akbarpur Biku 0186	Bewar
Akbarpur Ganu	Chandanpur 0161	Bewar
Alipur Patti	Alipur Patti 0051	Sultanganj
Allikhera	Allikhera 0048	Sultanganj
Amhira	Amhira	Bewar
Apoor Pur	Biraimpur Satdhara 0131	Bewar
Aram Sarai	Aram Sarai	Bewar
Asafpur	Chhatripur 0057	Sultanganj
Athalakra	Athalakra 0153	Bewar
Aurandh	Aurandh 0039	Sultanganj
Baghpur	Baghpur 0146	Bewar
Bahdinpur	Kamalpur Mahmoddia 0187	Bewar
Bahramau	Shivsinghpur	Bewar
Bajhera	Bajhera	Bewar
Bajpur	Jilhi	Bewar
Bakipur	Akbarpur	Bewar
Balarpur	Balarpur 0004	Sultanganj
Balarpur Ramnagar	Balarpur Ramnagar 0044	Sultanganj
Banakia	Banakia 0143	Bewar
Bankahar	Fatehpur Gani 0223	Bewar
Bara Surajpur	Bara Surajpur 0054	Sultanganj
Barauli	Barauli 0118	Bewar
Beenamau	Jamthara	Sultanganj
Beerpur Khas	Beerpur Khas 0114	Bewar

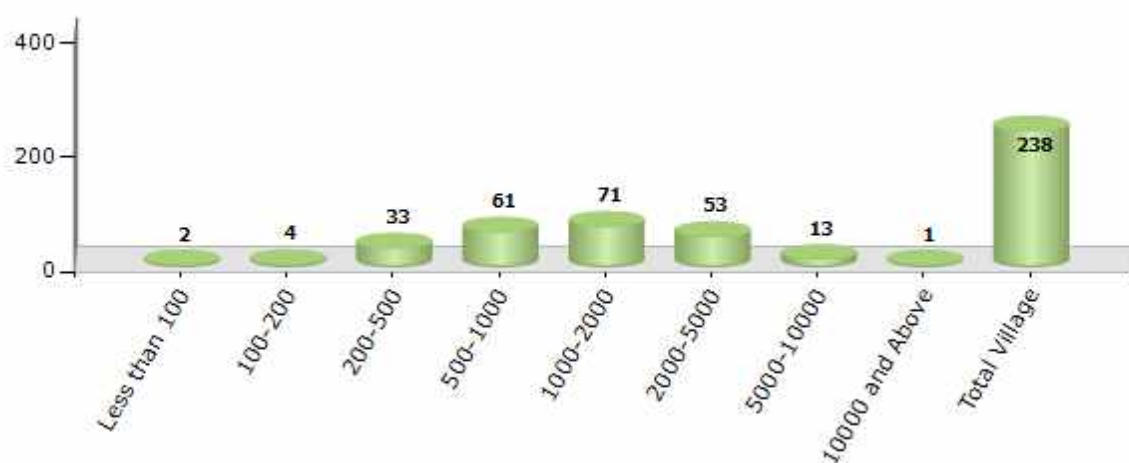
Contd....

## Demographics

### Number of Villages by Population Size - 2011

Less than 100	100-200	200-500	500-1000	1000-2000	2000-5000	5000-10000	10000 and Above	Total Village
2	4	33	61	71	53	13	1	238

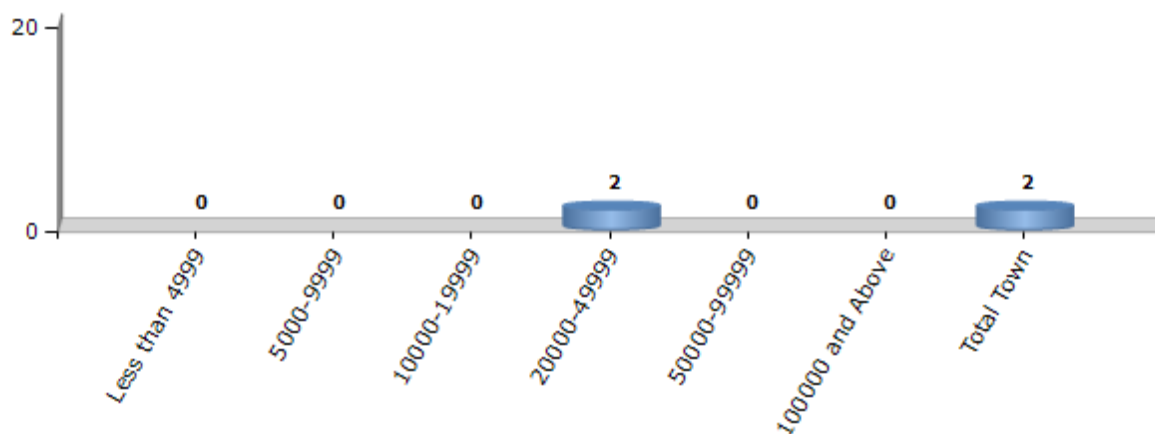
Number of Villages by Population Size - 2011



### Number of Towns by Population Size - 2011

Less than 4999	5000-9999	10000-19999	20000-49999	50000-99999	100000 and Above	Total Town
0	0	0	2	0	0	2

Number of Towns by Population Size - 2011

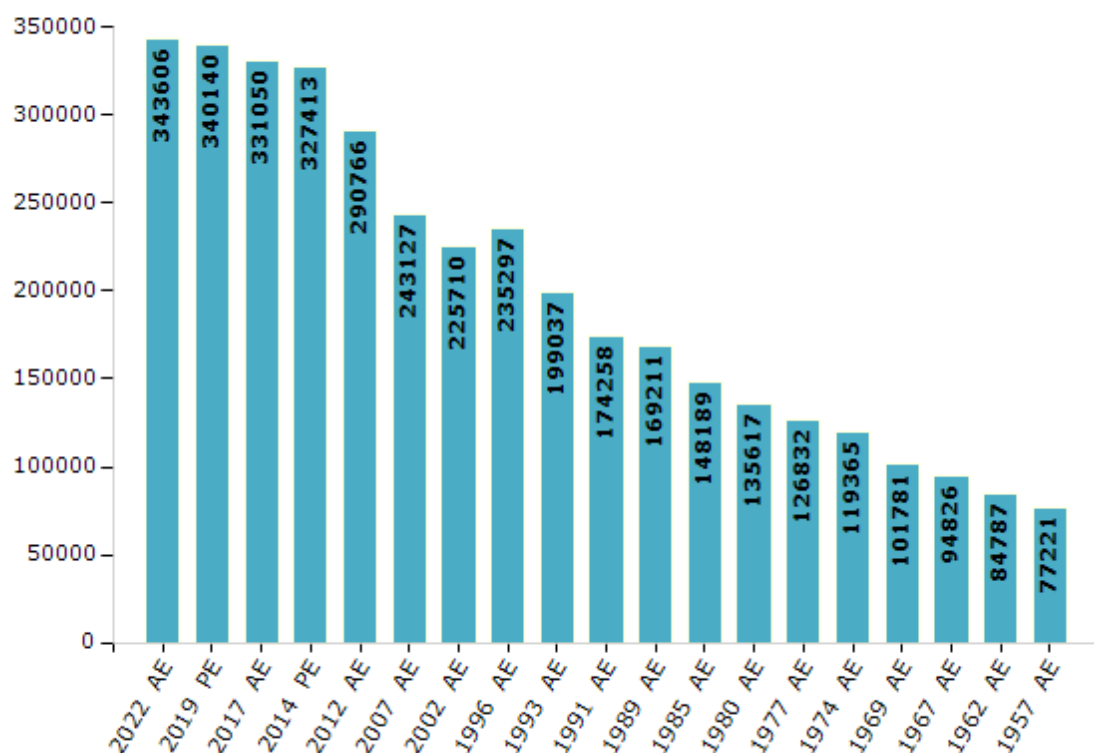


## Electoral Features

### Electors by Male & Female

Year	Male	Female	Others	Total	Year	Male	Female	Others	Total
2022 AE	185485	158094	27	343606	1991 AE	92493	81765	-	174258
2019 PE	182971	157149	20	340140	1989 AE	89818	79393	-	169211
2017 AE	177610	153425	15	331050	1985 AE	81657	66532	-	148189
2014 PE	175577	151829	7	327413	1980 AE	74739	60878	-	135617
2012 AE	161500	129263	3	290766	1977 AE	69901	56931	-	126832
2009 PE	-	-	-	-	1974 AE	66247	53118	-	119365
2007 AE	133185	109942	-	243127	1969 AE	55530	46251	-	101781
2004 PE	-	-	-	-	1967 AE	-	-	-	94826
2002 AE	126053	99657	-	225710	1962 AE	-	-	-	84787
1999 PE	-	-	-	-	1957 AE	-	-	-	77221
1996 AE	134640	100657	-	235297	1952 AE	-	-	-	-
1993 AE	110138	88899	-	199037					

Number of Electors



**Note :** AE : Assembly Election, PE : Assembly Segment of Parliamentary Election

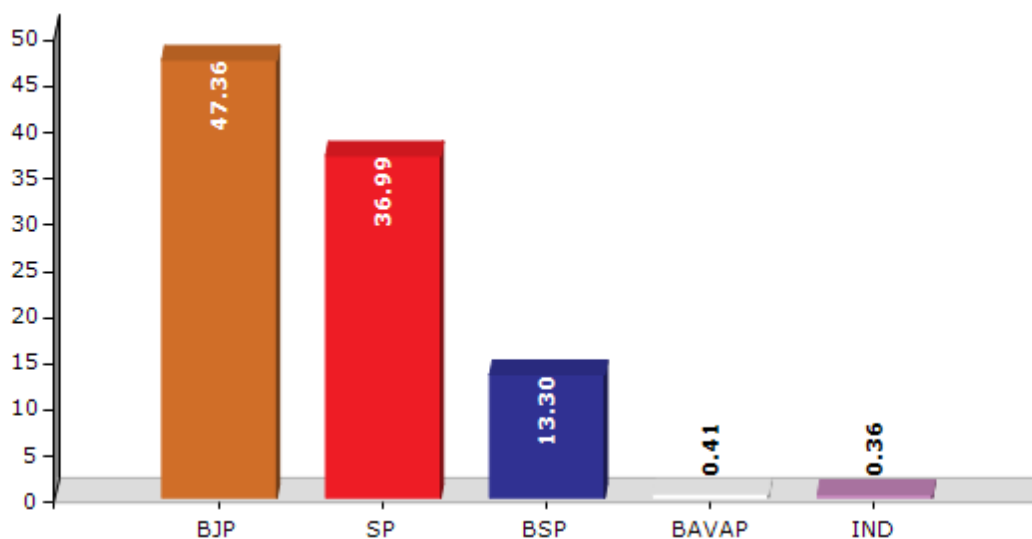


## Historical Summary Election Results

### Summary Result of Assembly Election - 2017

Candidate Name	Party	Votes	Votes %
Ram Naresh Agnihotri	BJP	92697	47.36
Alok Kumar	SP	72400	36.99
Surendra Singh	BSP	26041	13.3
Chakrapan	BAVAP	808	0.41
Sandeep Kumar	IND	696	0.36
Ajay Kumar	VPI	522	0.27
Pushpendra Kumar	BSRD	411	0.21
Sunil Kumar	IND	398	0.2
Hariram Shakya	RTKP	308	0.16
Arvind Singh	IND	223	0.11
	NOTA	1242	0.63

Votes Percentage of Top Parties - 2017



## Polling Station Level Election Results

### Number and Name of Polling Stations (PS) (2022)

Number of Polling Stations	Name of Polling Stations	Number of Polling Stations	Name of Polling Stations
1	P. P. Hannukheda	22	P. P. Etmadpur Room 2
2	P. P. Nagla Bagiya	23	P. P. Nagla Misur
3	P. P. Marhari	24	P.P. Simrai
4	P. P. Balarpur	25	P. M.V. Simrai
5	P. P. Nagla Himmat	26	P. P. Innikheda
6	J.H.School Bhojpur	27	P. P. Devgunj Room 1
7	P. P. Ganeshpur	28	P. P. Devgunj Room 2
8	Composit V. Shahpur	29	P. P. Dalippur Kailai
9	P. P. Nagla Kankan	30	Anganbadi Kendra Nagla Bhagat
10	P.P. Gaushalpur	31	P. P. Sunnamai Room 1
11	J.H.School Marhari	32	P. P. Sunnamai Room 2
12	Composit V. Lehra Room 1	33	J. H. School Nagla Jain Khan
13	Composit V. Lehra Room 2	34	P. P. Jaramai
14	P. P. Nagla Semar Room 1	35	P. P. Meharmai
15	P. P. Nagla Semar Room 2	36	P. P. Nagla Shimbhu
16	P. P. Nagla Dhan Singh	37	Composit V. Tisauli Room 1
17	J. H. School Nagla Mitkar Room 1	38	Composit V. Tisauli Room 2
18	J. H. School Nagla Mitkar Room 2	39	Composit V. Tisauli Room 3
19	P. P. Sanda Room 1	40	P. P. Dhaukalpur
20	P. P. Sanda Room 2	41	Composit V. Jaili Jirauli Room 1
21	P. P. Etmadpur Room 1	42	Composit V. Jaili Jirauli Room 2

Contd....

## Polling Station Level Election Results

### Polling Station-wise Votes Secured by Overall Top Five Parties in Bhongaon Assembly in Assembly Election (AE) under Mainpuri Parliamentary Constituency in Uttar Pradesh (2022)

Number of Polling Station	Winner - Ram Naresh Agnihotri (BJP)	Runner-up - Alok Kumar Shakya (SP)	3rd - Ashok Kumar (BSP)	4th - Bhupendra Singh (JANADIP)	5th - Mamta Rajput (INC)	NOTA	Other	Total Votes Secured
36	75	219	1	52	1	0	1	349
37	342	236	3	55	0	2	7	645
38	291	127	5	3	6	1	7	440
39	154	131	103	5	2	5	4	404
40	153	384	10	7	5	2	7	568
41	287	75	0	0	0	1	4	367
42	219	186	48	5	5	2	8	473
43	350	158	5	1	2	2	14	532
44	240	107	7	1	2	2	17	376
45	188	38	2	0	9	1	11	249
46	399	235	13	2	0	2	9	660
47	262	200	42	1	1	4	7	517
48	131	293	19	47	1	1	3	495
49	106	137	43	0	7	3	10	306
50	406	122	6	0	57	1	13	605
51	392	185	19	5	75	3	19	698
52	388	64	7	0	1	2	2	464
53	200	122	46	0	3	0	5	376
54	408	93	2	0	0	4	8	515
55	238	276	18	2	1	2	9	546
56	428	118	14	2	41	2	14	619
57	453	40	1	1	12	1	12	520
58	375	206	101	4	4	0	9	699
59	284	169	66	1	7	1	9	537
60	206	115	5	0	2	0	15	343
61	277	181	2	0	5	2	17	484
62	315	182	4	0	10	0	9	520
63	90	290	84	13	1	3	5	486
64	25	39	274	0	0	0	0	338
65	158	157	38	29	2	1	6	391
66	243	34	2	0	2	0	5	286
67	318	28	0	0	4	0	17	367
68	395	33	11	0	0	2	1	442
69	509	42	3	1	8	5	13	581
70	300	134	3	7	6	1	4	455

Contd....

## Polling Station Level Election Results

**Winner, Runner-up and 3rd Party Position & Winning Margin According to Polling Stations in Bhongaon Assembly in Assembly Election (AE) under Mainpuri Parliamentary Constituency in Uttar Pradesh (2022)**

Polling Station Number	Winner Party	Winner Votes (%)	Runner-up Party	Runner-up Votes (%)	Winning Margin Votes (%)	Third Party	Third Party Votes (%)	Other Votes (%)
71	SP	222 (44.4)	BJP	159 (31.8)	63 (12.6)	BSP	99 (19.8)	20 (4)
72	BJP	348 (66.92)	SP	131 (25.19)	217 (41.73)	BSP	18 (3.46)	23 (4.42)
73	SP	281 (77.41)	BJP	72 (19.83)	209 (57.58)	AAP	4 (1.1)	6 (1.65)
74	SP	282 (59.49)	BJP	177 (37.34)	105 (22.15)	JANADIP	8 (1.69)	7 (1.48)
75	BJP	458 (77.36)	SP	116 (19.59)	342 (57.77)	BSP	5 (0.84)	13 (2.2)
76	BJP	576 (82.29)	SP	78 (11.14)	498 (71.15)	IND (SS)	16 (2.29)	30 (4.29)
77	BJP	239 (67.13)	BSP	70 (19.66)	169 (47.47)	SP	21 (5.9)	26 (7.3)
78	BJP	149 (48.53)	SP	84 (27.36)	65 (21.17)	INC	36 (11.73)	38 (12.38)
79	BJP	225 (74.26)	SP	47 (15.51)	178 (58.75)	INC	19 (6.27)	12 (3.96)
80	BJP	437 (83.24)	SP	78 (14.86)	359 (68.38)	BSP	2 (0.38)	8 (1.52)
81	BJP	393 (77.36)	SP	87 (17.13)	306 (60.23)	BSP	18 (3.54)	10 (1.97)
82	BJP	215 (60.22)	SP	120 (33.61)	95 (26.61)	INC	5 (1.4)	17 (4.76)
83	BJP	410 (87.23)	SP	44 (9.36)	366 (77.87)	INC	6 (1.28)	10 (2.13)
84	BJP	375 (77.64)	SP	81 (16.77)	294 (60.87)	IND (SS)	7 (1.45)	20 (4.14)
85	SP	389 (76.13)	BJP	104 (20.35)	285 (55.78)	BSP	7 (1.37)	11 (2.15)
86	BJP	258 (67.72)	SP	57 (14.96)	201 (52.76)	IND (SS)	24 (6.3)	42 (11.02)
87	BJP	321 (59.23)	SP	197 (36.35)	124 (22.88)	BSP	7 (1.29)	17 (3.14)
88	BJP	380 (57.75)	SP	162 (24.62)	218 (33.13)	BSP	62 (9.42)	54 (8.21)
89	SP	136 (51.71)	BJP	120 (45.63)	16 (6.08)	IND (SS)	5 (1.9)	2 (0.76)
90	BJP	380 (84.63)	SP	33 (7.35)	347 (77.28)	BSP	22 (4.9)	14 (3.12)
91	SP	723 (95.26)	BSP	22 (2.9)	701 (92.36)	BJP	10 (1.32)	4 (0.53)
92	BJP	392 (63.84)	SP	113 (18.4)	279 (45.44)	INC	78 (12.7)	31 (5.05)
93	BJP	187 (92.12)	SP	10 (4.93)	177 (87.19)	INC	4 (1.97)	2 (0.99)
94	BJP	265 (93.64)	SP	6 (2.12)	259 (91.52)	JANADIP	3 (1.06)	9 (3.18)
95	BJP	242 (72.89)	SP	46 (13.86)	196 (59.03)	INC	32 (9.64)	12 (3.61)
96	SP	419 (69.03)	BJP	128 (21.09)	291 (47.94)	BSP	50 (8.24)	10 (1.65)
97	BJP	210 (62.13)	SP	58 (17.16)	152 (44.97)	BSP	56 (16.57)	14 (4.14)
98	BJP	352 (70.26)	SP	87 (17.37)	265 (52.89)	BSP	44 (8.78)	18 (3.59)
99	SP	202 (34.83)	BJP	191 (32.93)	11 (1.9)	JANADIP	97 (16.72)	90 (15.52)
100	SP	222 (42.37)	BJP	151 (28.82)	71 (13.55)	JANADIP	128 (24.43)	23 (4.39)
101	BJP	263 (49.34)	SP	204 (38.27)	59 (11.07)	INC	22 (4.13)	44 (8.26)
102	BJP	210 (42.86)	SP	155 (31.63)	55 (11.23)	BSP	111 (22.65)	14 (2.86)
103	BJP	225 (49.56)	SP	207 (45.59)	18 (3.97)	INC	11 (2.42)	11 (2.42)
104	SP	296 (48.76)	BJP	295 (48.6)	1 (0.16)	INC	6 (0.99)	10 (1.65)
105	BJP	356 (58.46)	SP	210 (34.48)	146 (23.98)	BSP	12 (1.97)	31 (5.09)

Contd....

## Socio-Economic Amenities - Rural

### Access to Education Facilities

Particulars	Number of Villages (% of Population)				
	Available	Not Available	If Not Available (Distance of Nearest Facility)		
			A	B	C
Govt. Primary School	206 (96)	32 (4)	14 (1)	1 (0)	0 (0)
Private Primary School	62 (42)	176 (58)	2 (0)	1 (0)	0 (0)
Govt. Middle School	99 (66)	139 (34)	72 (17)	4 (1)	1 (0)
Private Middle School	61 (47)	177 (53)	18 (3)	11 (3)	0 (0)
Govt. Secondary School	15 (12)	223 (88)	15 (6)	20 (7)	7 (2)
Private Secondary School	34 (29)	204 (71)	78 (29)	44 (14)	1 (0)
Govt. Senior Secondary School	10 (7)	228 (93)	30 (11)	22 (9)	10 (3)
Private Senior Secondary School	17 (14)	221 (86)	55 (22)	64 (26)	5 (2)
Govt. Arts and Science Degree College	0 (0)	238 (100)	2 (1)	16 (4)	22 (7)
Private Arts and Science Degree College	5 (6)	233 (94)	46 (16)	75 (32)	45 (24)
Govt. Engineering College	0 (0)	238 (100)	0 (0)	2 (1)	82 (34)
Private Engineering College	0 (0)	238 (100)	3 (1)	9 (3)	102 (44)
Govt. Medicine College	0 (0)	238 (100)	0 (0)	1 (0)	112 (48)
Private Medicine College	0 (0)	238 (100)	0 (0)	2 (1)	79 (32)
Govt. Management Institute	0 (0)	238 (100)	0 (0)	1 (0)	63 (26)
Private Management Institute	0 (0)	238 (100)	0 (0)	3 (1)	120 (50)
Govt. Polytechnic	0 (0)	238 (100)	1 (0)	6 (4)	177 (76)
Private Polytechnic	0 (0)	238 (100)	0 (0)	2 (0)	27 (10)
Govt. Vocational Training School/ITI	0 (0)	238 (100)	1 (0)	6 (4)	184 (80)
Private Vocational Training School/ITI	0 (0)	238 (100)	0 (0)	2 (0)	20 (5)
Govt. Non Formal Training Centre	8 (5)	230 (95)	5 (2)	20 (6)	100 (42)
Private Non Formal Training Centre	3 (2)	235 (98)	1 (0)	9 (1)	5 (2)
Govt. School For Disabled	0 (0)	238 (100)	0 (0)	0 (0)	110 (48)
Private School For Disabled	1 (0)	237 (100)	1 (1)	2 (0)	14 (3)
Government Others	0 (0)	238 (100)	0 (0)	0 (0)	0 (0)
Private Others	0 (0)	238 (100)	0 (0)	0 (0)	0 (0)

Note : Distance A : Less than 5 km; B : Between 5-10 km; C : 10+ km.; Source : Data Analysis is based on 2011 Census.



## DISCLAIMER

The Terms of Use and Disclaimer of Datanet India Private Limited (hereinafter referred to as "Datanet") for use of this analysis report of **Bhongaon Assembly Constituency (Bhongaon Vidhan Sabha)** :-

1. **Assembly Factbook™** is a Registered Trade Mark owned by Datanet.
2. All the maps are sketched and graphical representation only and have not been drawn to the scale and also not to represent the actual geographical area or boundary of the unit.
3. The data for the aforesaid analysis is based on authentic sources and has been culled from the various publications of Census, CSO and NSSO for district and block level data, various central and state government departments, Central & State Elections Commissions and the concerned Returning Officers' releases, Electoral Rolls, Election results and allied publications, internal assessment, surveys, estimates and analysis. Therefore, certain adjustment of data at micro level may have been done to arrive closer to the macro data.
4. Data have been provided on an "As Is" and "As AVAILABLE" basis
5. The colours shown in the maps or diagram and charts of a particular party, alliance or AC are indicative and do not represent them.
6. This publication which includes maps, sheets, graphs and data would be the property under copyright of Datanet only. The user may use these for its internal study, analysis and research purposes. It's public display, re-selling or any commercial uses by the user are not allowed.
7. Datanet has taken due care and caution in compilation and processing of data and allied information, but does not guarantee the accuracy, adequacy or completeness of any information/analysis and will be not responsible for any errors or omissions or for the results obtained from the use of such information/analysis.
8. All the contents for the publication have been culled from various authentic sources and Datanet reasonably believes such sources to be reliable, but does not make any representations, express or implied as to the accuracy or fitness of use of such information. The information or contents of the information/analysis do not constitute advice and should not be relied upon in making (or refraining from making) any decision. Any reliance placed upon the information provided by Datanet is the sole responsibility and strictly at the user's risk.
9. In no event will Datanet be liable for any damages (including, without limitation, damages for loss of business projects, or loss of profits) arising in contract, tort or otherwise from the use of or inability to use any of its contents, or from any action taken (or refrained from being taken) as a result of using the analysis or any of its contents. Datanet its directors, owners, editors, officials, employees, distributor and agents or any associate will not be liable for any errors in the information contained or any consequences arising from the use of the contents of the provided information/analysis.
10. If any provision of these terms and conditions is held invalid or illegal or unenforceable for any reason by any court of competent jurisdiction, such provision shall be severed and the remainder of provisions of the terms and conditions shall continue in full force and effect as if the Term of Use had been executed with the invalid, illegal or unenforceable provision eliminated.
11. If there are any discrepancies in the information provided, please bring it to attention of Datanet for suitable rectification measures.

**Buy Online This Complete Book At**  
**Datanet India eBooks Store**

[www.indiastatpublications.com](http://www.indiastatpublications.com)

or go directly at

[http://www.indiastatpublications.com/  
Assembly\\_factbook/Uttar Pradesh/Mainpuri/ Bhongaon](http://www.indiastatpublications.com/Assembly_factbook/Uttar%20Pradesh/Mainpuri/Bhongaon)

 **indiastat**elections

ISBN : 978-93-5905-184-0



9 789359 051840