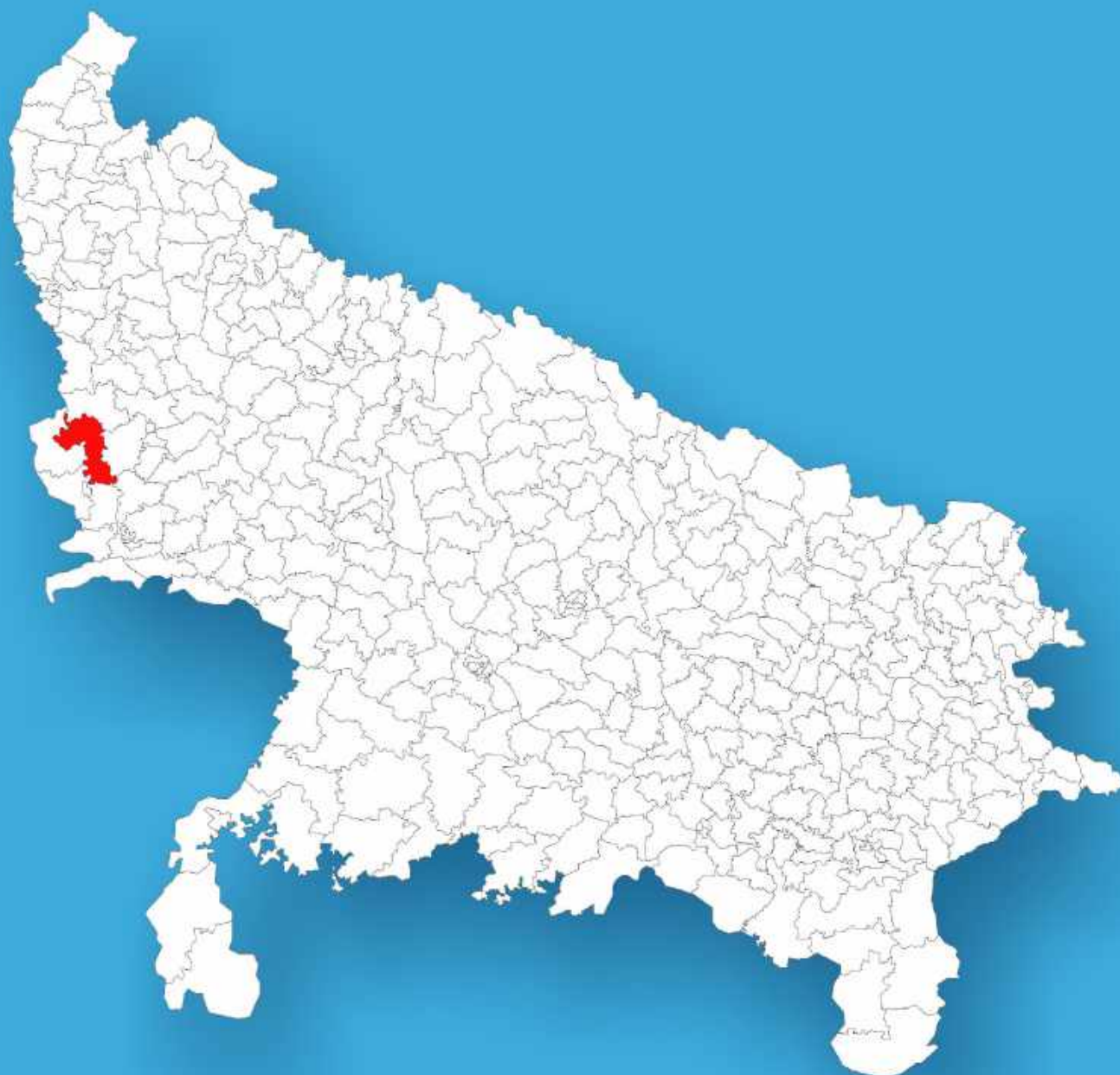




Uttar Pradesh

Assembly Factbook™

Mant Assembly Constituency



Key Electoral Data of Mant
Assembly Constituency (Vidhan Sabha)

Uttar Pradesh

Assembly Factbook™

Mant Assembly Constituency



Mant Vidhan Sabha

Editor & Director

Dr. R.K. Thukral

Research Editor

Dr. Shafeeq Rahman

**Compiled, Researched and Published by
Datanet India Pvt. Ltd.**

D-100, 1st Floor,

Okhla Industrial Area, Phase-I,

New Delhi- 110020.

Ph.: 91-11- 43580781-84

Email : support@indiastatpublications.com

Website : www.indiastatelections.com

Online Book Store :

www.indiastatpublications.com

Report No. : AFB/UP-082-0125

ISBN : 978-93-5905-926-6

First Edition : January, 2018

Eighth Updated Edition : January, 2025

Price : Rs.11500/-

US\$ 310

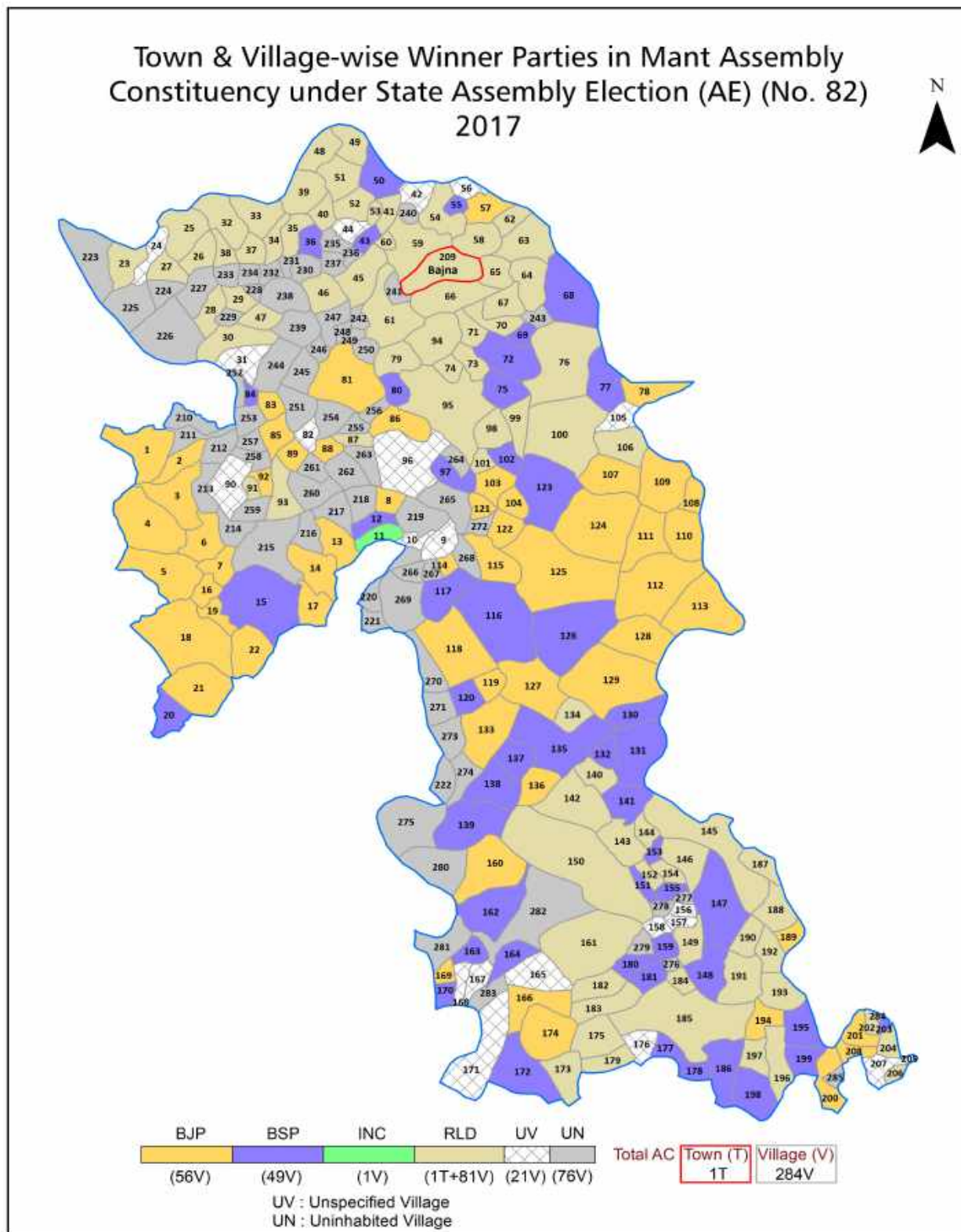
© Datanet India Pvt. Ltd.

All rights reserved. No part of this book may be reproduced, stored in a retrieval system or transmitted in any form or by any means, mechanical photocopying, photographing, scanning, recording or otherwise without the prior written permission of the publisher. Please refer to Disclaimer at page no. 333 for the use of this publication.

Printed in India

No.	Particulars	Page No.
	Introduction	
1	Assembly Constituency - (Vidhan Sabha) at a Glance Features of Assembly as per Delimitation Commission of India (2008)	1-2
	Location and Political Maps	
2	Location Map Boundaries of Assembly Constituency - (Vidhan Sabha) in District Boundaries of Assembly Constituency under Parliamentary Constituency - (Lok Sabha) Town & Village-wise Winner Parties-2024, 2022, 2019, 2017, 2014, 2012 and 2009	3-11
	Administrative Setup (2011)	
3	District Sub-district Towns Villages Inhabited Villages Uninhabited Villages Village Panchayat Intermediate Panchayat	12-23
	Demographics (2011)	
4	Population Households Rural/Urban Population Towns and Villages by Population Size Sex Ratio (Total & 0-6 Years) Religious Population Social Population Literacy Rate	24-25
	Electoral Features	
5	Important Dates of Last Elections Held Electors by Gender Service Electors Voters Voters Turnout Polling Stations & Average Number of Electors per Polling Station Electors by Age Group Present Elected Representatives	26-31
	Historical Summary Election Results	
6	Vote Share of Major Parties Winning Margin (Number & Percentage) Polarity of Parties Summary Result of Assembly Segment of Parliamentary Election 2024, 2019, 2014, 2009, 2004 and 1999 Summary Result of Assembly Elections 2022, 2017, 2012, 2007, 2002, 1996, 1993, 1991, 1989, 1985, 1980, 1977, 1974, 1969, 1967, 1962, 1957 and 1952	32-58
	Polling Station Level Election Results	
7	Name and Number of Polling Station 2024, 2022, 2019, 2017, 2014, 2012 and 2009 Polling Station-wise Electors, Voters & Voters Turnout 2024, 2022, 2019, 2017, 2014, 2012 and 2009 Polling Station wise Elections Results 2024, 2022, 2019, 2017, 2014, 2012 and 2009	59-292
8	Panchayat and Local Bodies Election Results Panchayat Result 2015 Urban Local Bodies Result 2012	293-311
	Share of Assembly Constituency	
9	Share of Assembly Constituency - (Vidhan Sabha) in State, District and Parliamentary Constituency - (Lok Sabha)	312
	Socio-Economic Amenities (2011)	
10	Access to Administrative Units Agricultural, Manufacturing and Industrial Commodities Demographic Indicators Education Health & Manpower Drinking Water Supply Sanitation Entertainment and Recreations Infrastructure Power Food Allocation Distribution and Marketing of Agriculture Commodities Infrastructure Transport and Road Infrastructure Communication Banking and Financial Services Land Use Irrigation Source	314-328
11	Abbreviation & Sources	329-332
12	Disclaimer	333

Location & Political Map



Administrative Setup

List of Village Panchayat & Intermediate Panchayat (Block) Name - 2011

Village Name	Village Panchayat Name	Intermediate Panchayat Name
Abhaipura Banger	Maduaka	Nohjhil
Adampur	Shergarh	Chhata
Ahamadpur	Ahamadpur	Nohjhil
Akbarpur	Akbarpur	Mat
Amanullapur	Amanullapur	Nohjhil
Amera	Raya	Raya
Arazi Milik.Bikanushah	Saka Jangali	Raya
Arruwa Banger	Arruwa Banger	Mat
Arruwa Khader	Arruwa	Mat
Asfabad	Khaira	Nohjhil
Astauli	Astauli	Chaumuha
Auhawa Bangar	Auhawa	Nohjhil
Awa Khera	Awa Khera	Nohjhil
Badanpur	Badanpur	Nohjhil
Badhari	Badhari	Nohjhil
Badoth	Badoth	Nohjhil
Baghai Banger	Baghai	Nohjhil
Bahadin	Bahadin	Mat
Baikunthpur	Auhava	Nohjhil
Bakla	Bakla	Mat
Balipur	Shall	Nohjhil
Barha Bangar	Barha	Chhata
Barhaun	Barhaun	Raya
Baroth Bangar	Baroth	Nohjhil
Baroth Khadar	-	Nohjhil
Basai Shergarh Bangar	Basai Shergarh	Chhata
Basau Banger	Daulatpur	Nohjhil
Bazidpur Bangar	Peerpur	Chhata
Begampur Banger	Jahangirpur	Mat

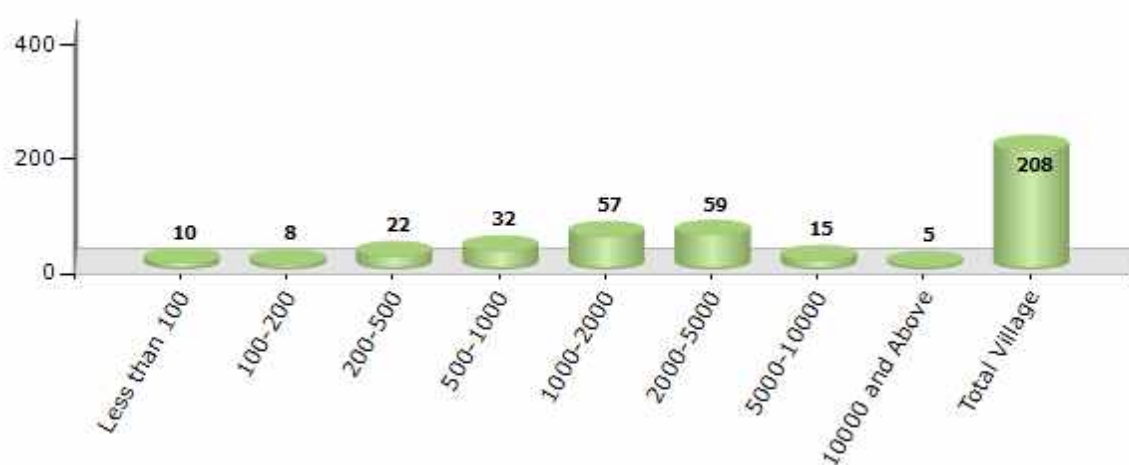
Contd....

Demographics

Number of Villages by Population Size - 2011

Less than 100	100-200	200-500	500-1000	1000-2000	2000-5000	5000-10000	10000 and Above	Total Village
10	8	22	32	57	59	15	5	208

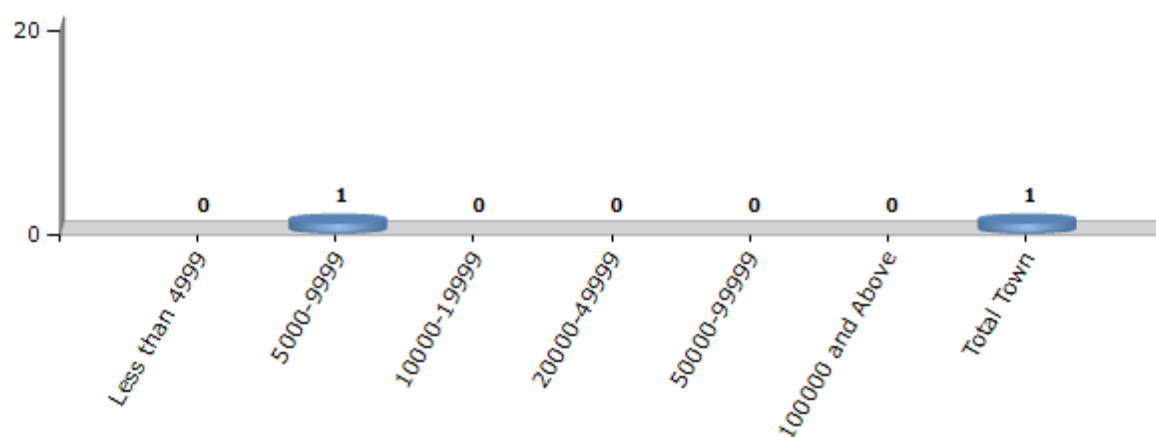
Number of Villages by Population Size - 2011



Number of Towns by Population Size - 2011

Less than 4999	5000-9999	10000-19999	20000-49999	50000-99999	100000 and Above	Total Town
0	1	0	0	0	0	1

Number of Towns by Population Size - 2011

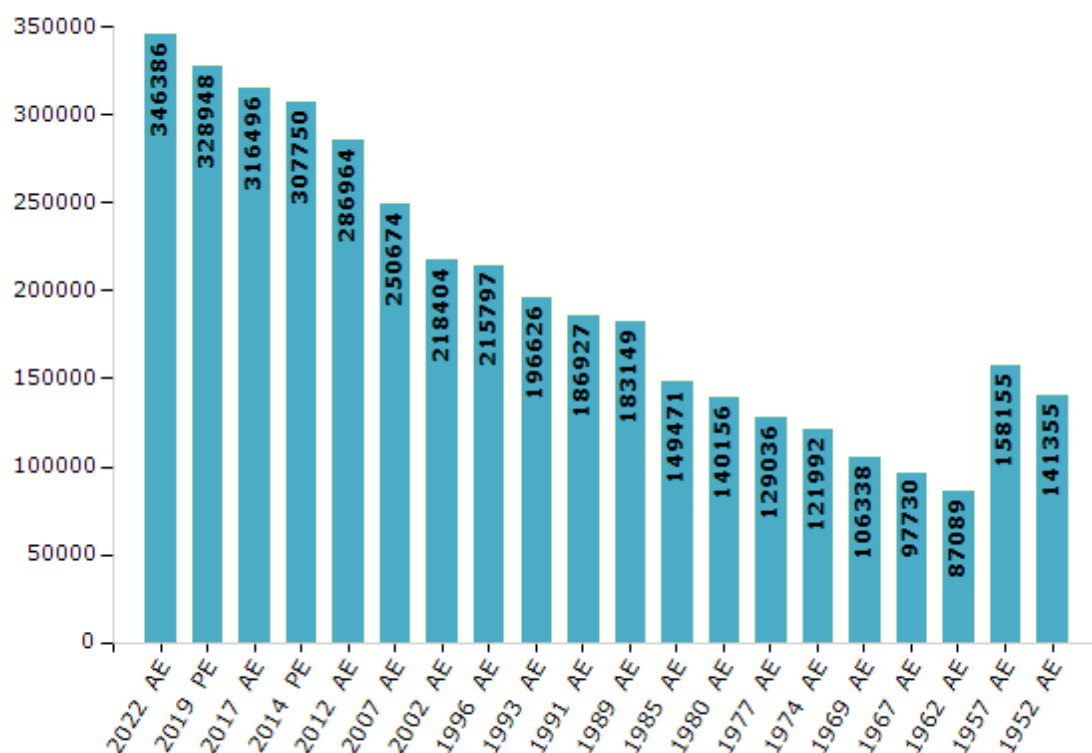


Electoral Features

Electors by Male & Female

Year	Male	Female	Others	Total	Year	Male	Female	Others	Total
2022 AE	185926	160442	18	346386	1991 AE	102912	84015	-	186927
2019 PE	178194	150734	20	328948	1989 AE	100828	82321	-	183149
2017 AE	173596	142874	26	316496	1985 AE	82242	67229	-	149471
2014 PE	169869	137848	33	307750	1980 AE	77185	62971	-	140156
2012 AE	158644	128282	38	286964	1977 AE	71044	57992	-	129036
2009 PE	-	-	-	-	1974 AE	67047	54945	-	121992
2007 AE	138223	112451	-	250674	1969 AE	55278	51060	-	106338
2004 PE	-	-	-	-	1967 AE	-	-	-	97730
2002 AE	122604	95800	-	218404	1962 AE	-	-	-	87089
1999 PE	-	-	-	-	1957 AE	-	-	-	158155
1996 AE	118712	97085	-	215797	1952 AE	-	-	-	141355
1993 AE	111996	84630	-	196626					

Number of Electors



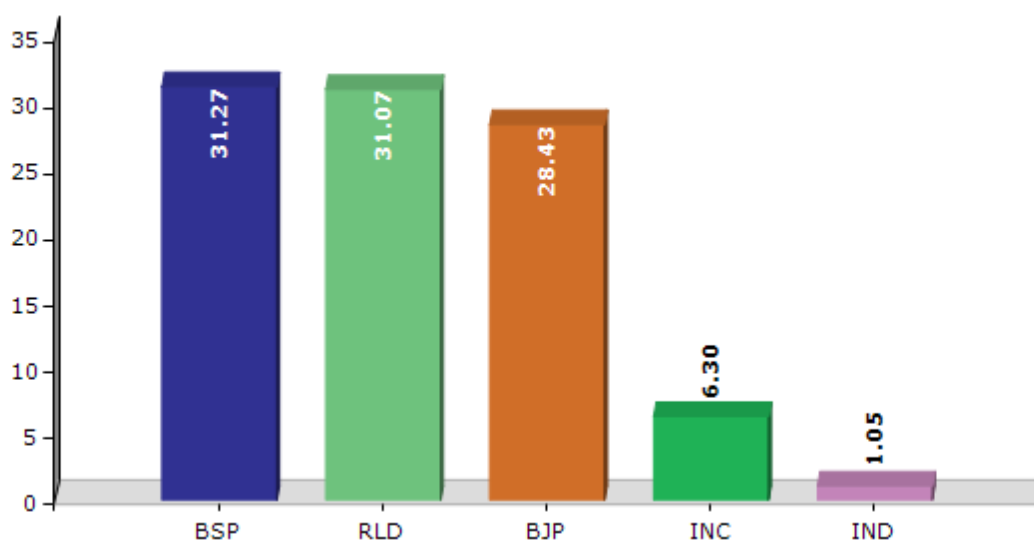
Note : AE : Assembly Election, PE : Assembly Segment of Parliamentary Election

Historical Summary Election Results

Summary Result of Assembly Election - 2017

Candidate Name	Party	Votes	Votes %
Shyam Sunder Sharma	BSP	65862	31.27
Yogesh Chaudhary	RLD	65430	31.07
Satish Kumar Sharma	BJP	59871	28.43
Jagdish Singh	INC	13270	6.3
Lalit Kumar	IND	2203	1.05
Vishnu Kumar Sharma	IND	715	0.34
Subhash Chaudhary	IND	628	0.3
Chandan Singh Dhangar	RSOSP	590	0.28
Ram Swaroop	IND	245	0.12
Mukesh Kumar	BHAKALP	232	0.11
Yogesh Kumar	IND	152	0.07
Darmendra Kumar	IND	146	0.07
	NOTA	1253	0.59

Votes Percentage of Top Parties - 2017



Polling Station Level Election Results

Number and Name of Polling Stations (PS) (2022)

Number of Polling Stations	Name of Polling Stations	Number of Polling Stations	Name of Polling Stations
1	P.V. Nagla Mev	22	Sardar Patel I.C. Shergarh R.N. 2
2	U.P.S Rajagadhi (Class 1-8) R. N. 1	23	Sardar Patel I.C. Shergarh R.N. 3
3	U.P.S Rajagadhi (Class 1-8) R. N. 2	24	Sardar Patel I.C. Shergarh R.N. 4
4	P.V. Badha R.N. 1	25	Sardar Patel I.C. Shergarh R.N. 5
5	P.V. Badha R.N. 2	26	Sardarpateli.C. Shergarh R. N. 6
6	P.V. Rampur	27	Khelanvan I.C. Shergarh R. N. 1
7	U.P.S. Ujhani (Class 1-8) R. N. 1	28	Khelanvan I.C. Shergarh R. N. 2
8	U.P.S Ujhani (Class 1-8) R. N. 2	29	U.P.S Janghawali (Class 1-8) R. N. 1
9	U.P.S. Husaini (Class 1-8) R. N. 1	30	U.P.S Janghawali (Class 1-8) R. N. 2
10	U.P.S Husaini (Class 1-8) R. N. 2	31	U.P.S Janghawali (Class 1-8) R. N. 3
11	U.P.S Husaini (Class 1-8) R. N. 3	32	U.P.S Khurshi (Class 1-8)
12	P.V. Jatwari R.N. 1	33	Puniya Rumali U.M.V. Ranhera R.N. 1
13	P.V. Jatwari R.N. 2	34	Puniya Rumali U.M.V. Ranhera R.N.2
14	P.V. Sahab Nagar	35	Puniya Rumali U.M.V. Ranhera R.N. 3
15	U.P.S. Basai Shergarh (Class 1-8) R. N. 1	36	U.P.S Sainwa R. N.1
16	P.V. Khadwai	37	U.P.S.Sainwa R. N. 2
17	P.V. Aadampur	38	U.P.S Sainwa R. N. 3
18	U.P.S. Nagla Pachainya (1-8)	39	P.V. Gora
19	Panchayatghar Shergarh R.N. 1	40	U.P.S Astauli (Class 1-8)
20	Panchayatghar Shergarh R.N. 2	41	P.V. Garhi Bheema R.N. 1
21	Sardar Patel I.C. Shergarh R.N. 1	42	P.V. Garhi Bheema R.N. 2

Contd....

Polling Station Level Election Results

Polling Station-wise Votes Secured by Overall Top Five Parties in Mant Assembly in Assembly Election (AE) under Mathura Parliamentary Constituency in Uttar Pradesh (2022)

Number of Polling Station	Winner - Rajesh Chaudhary (BJP)	Runner-up - Shyam Sundar Sharma (BSP)	3rd - Dr. Sanjay Lathar (SP)	4th - Ram Babu Singh (AAP)	5th - Suman Chaudhary (INC)	NOTA	Other	Total Votes Secured
36	377	237	26	0	0	3	0	643
37	268	187	3	0	1	0	2	461
38	259	357	5	2	5	6	11	645
39	130	141	16	0	1	0	2	290
40	431	225	138	2	6	10	21	833
41	472	58	77	3	1	22	15	648
42	150	351	35	2	1	4	3	546
43	156	32	60	3	0	6	4	261
44	293	141	79	1	2	7	3	526
45	335	132	100	3	1	5	7	583
46	69	27	36	0	0	0	0	132
47	166	110	44	0	1	4	7	332
48	363	204	147	0	3	5	9	731
49	10	66	251	0	3	0	6	336
50	154	264	396	11	3	4	10	842
51	118	126	229	0	2	0	7	482
52	347	158	281	3	1	1	5	796
53	121	65	193	5	1	1	1	387
54	79	64	307	1	2	1	5	459
55	60	91	371	1	1	2	3	529
56	135	132	304	0	3	1	4	579
57	200	288	209	4	8	5	7	721
58	285	153	294	2	3	5	3	745
59	131	90	218	2	0	0	6	447
60	67	50	156	0	1	1	1	276
61	215	111	371	2	1	4	2	706
62	207	92	151	27	0	2	3	482
63	116	36	154	14	1	2	6	329
64	247	98	176	1	1	3	4	530
65	176	173	97	8	0	2	4	460
66	267	246	44	0	2	12	5	576
67	333	186	62	3	3	5	2	594
68	204	5	63	1	0	0	1	274
69	388	102	143	2	1	2	8	646
70	336	199	94	10	3	5	6	653

Contd....

Polling Station Level Election Results

Winner, Runner-up and 3rd Party Position & Winning Margin According to Polling Stations in Mant Assembly in Assembly Election (AE) under Mathura Parliamentary Constituency in Uttar Pradesh (2022)

Polling Station Number	Winner Party	Winner Votes (%)	Runner-up Party	Runner-up Votes (%)	Winning Margin Votes (%)	Third Party	Third Party Votes (%)	Other Votes (%)
71	BJP	99 (43.04)	SP	72 (31.3)	27 (11.74)	BSP	56 (24.35)	3 (1.3)
72	BJP	156 (52.17)	SP	77 (25.75)	79 (26.42)	BSP	56 (18.73)	10 (3.34)
73	BSP	257 (63.61)	BJP	91 (22.52)	166 (41.09)	SP	37 (9.16)	19 (4.7)
74	SP	291 (46.12)	BJP	219 (34.71)	72 (11.41)	BSP	108 (17.12)	13 (2.06)
75	AAP	170 (39.08)	BSP	111 (25.52)	59 (13.56)	SP	99 (22.76)	55 (12.64)
76	SP	117 (31.54)	AAP	117 (31.54)	0 (0)	BJP	95 (25.61)	42 (11.32)
77	SP	252 (50.1)	BJP	150 (29.82)	102 (20.28)	BSP	74 (14.71)	27 (5.37)
78	SP	50 (48.08)	BSP	39 (37.5)	11 (10.58)	BJP	13 (12.5)	2 (1.92)
79	SP	237 (55.63)	BJP	93 (21.83)	144 (33.8)	BSP	89 (20.89)	7 (1.64)
80	BSP	171 (75.33)	SP	40 (17.62)	131 (57.71)	BJP	7 (3.08)	9 (3.96)
81	SP	125 (44.64)	BSP	99 (35.36)	26 (9.28)	BJP	44 (15.71)	12 (4.29)
82	BSP	206 (41.96)	SP	136 (27.7)	70 (14.26)	BJP	133 (27.09)	16 (3.26)
83	BJP	260 (60.32)	SP	80 (18.56)	180 (41.76)	BSP	76 (17.63)	15 (3.48)
84	BJP	74 (57.81)	SP	27 (21.09)	47 (36.72)	BSP	25 (19.53)	2 (1.56)
85	BJP	251 (44.27)	BSP	165 (29.1)	86 (15.17)	SP	134 (23.63)	17 (3)
86	SP	349 (58.17)	BSP	149 (24.83)	200 (33.34)	BJP	93 (15.5)	9 (1.5)
87	AAP	440 (53.53)	BSP	192 (23.36)	248 (30.17)	SP	112 (13.63)	78 (9.49)
88	BSP	271 (47.8)	BJP	161 (28.4)	110 (19.4)	SP	66 (11.64)	69 (12.17)
89	SP	230 (45.1)	BJP	145 (28.43)	85 (16.67)	BSP	82 (16.08)	53 (10.39)
90	BSP	156 (38.33)	BJP	136 (33.42)	20 (4.91)	SP	110 (27.03)	5 (1.23)
91	BJP	345 (47.59)	SP	277 (38.21)	68 (9.38)	BSP	90 (12.41)	13 (1.79)
92	SP	258 (43.14)	BJP	241 (40.3)	17 (2.84)	BSP	94 (15.72)	5 (0.84)
93	BJP	213 (52.46)	SP	111 (27.34)	102 (25.12)	BSP	81 (19.95)	1 (0.25)
94	BJP	175 (43.1)	BSP	155 (38.18)	20 (4.92)	SP	69 (17)	7 (1.72)
95	BJP	102 (53.4)	BSP	72 (37.7)	30 (15.7)	SP	14 (7.33)	3 (1.57)
96	BSP	237 (53.26)	BJP	146 (32.81)	91 (20.45)	SP	44 (9.89)	18 (4.04)
97	BSP	264 (71.93)	BJP	72 (19.62)	192 (52.31)	SP	21 (5.72)	10 (2.72)
98	BJP	238 (53.01)	BSP	156 (34.74)	82 (18.27)	SP	47 (10.47)	8 (1.78)
99	SP	205 (42.89)	BSP	144 (30.13)	61 (12.76)	BJP	118 (24.69)	11 (2.3)
100	BJP	191 (46.7)	SP	128 (31.3)	63 (15.4)	BSP	86 (21.03)	4 (0.98)
101	BSP	142 (37.87)	BJP	116 (30.93)	26 (6.94)	SP	114 (30.4)	3 (0.8)
102	SP	242 (39.03)	BSP	203 (32.74)	39 (6.29)	BJP	167 (26.94)	8 (1.29)
103	BSP	405 (51.14)	SP	191 (24.12)	214 (27.02)	BJP	177 (22.35)	19 (2.4)
104	BJP	122 (52.14)	SP	68 (29.06)	54 (23.08)	BSP	42 (17.95)	2 (0.85)
105	SP	282 (41.59)	BSP	196 (28.91)	86 (12.68)	BJP	189 (27.88)	11 (1.62)

Contd....

Socio-Economic Amenities - Rural

Access to Education Facilities

Particulars	Number of Villages (% of Population)				
	Available	Not Available	If Not Available (Distance of Nearest Facility)		
			A	B	C
Govt. Primary School	191 (98)	17 (2)	6 (1)	0 (0)	0 (0)
Private Primary School	31 (26)	177 (74)	1 (0)	1 (1)	0 (0)
Govt. Middle School	132 (81)	76 (19)	25 (4)	1 (0)	1 (0)
Private Middle School	25 (21)	183 (79)	12 (2)	3 (1)	0 (0)
Govt. Secondary School	27 (27)	181 (73)	33 (12)	27 (14)	6 (2)
Private Secondary School	25 (20)	183 (80)	35 (10)	12 (5)	2 (1)
Govt. Senior Secondary School	17 (20)	191 (80)	37 (14)	29 (15)	4 (1)
Private Senior Secondary School	18 (19)	190 (81)	44 (16)	17 (7)	9 (3)
Govt. Arts and Science Degree College	2 (3)	206 (97)	14 (7)	13 (9)	45 (24)
Private Arts and Science Degree College	1 (1)	207 (99)	28 (14)	24 (10)	51 (23)
Govt. Engineering College	0 (0)	208 (100)	0 (0)	0 (0)	36 (23)
Private Engineering College	0 (0)	208 (100)	7 (3)	2 (1)	114 (53)
Govt. Medicine College	0 (0)	208 (100)	5 (2)	2 (0)	58 (30)
Private Medicine College	0 (0)	208 (100)	3 (1)	1 (0)	85 (42)
Govt. Management Institute	0 (0)	208 (100)	0 (0)	0 (0)	34 (19)
Private Management Institute	2 (2)	206 (98)	4 (1)	2 (1)	109 (58)
Govt. Polytechnic	0 (0)	208 (100)	2 (1)	1 (1)	92 (47)
Private Polytechnic	1 (1)	207 (99)	1 (0)	5 (1)	70 (34)
Govt. Vocational Training School/ITI	0 (0)	208 (100)	2 (1)	1 (1)	76 (40)
Private Vocational Training School/ITI	5 (4)	203 (96)	11 (3)	15 (8)	63 (30)
Govt. Non Formal Training Centre	0 (0)	208 (100)	1 (0)	6 (2)	39 (19)
Private Non Formal Training Centre	1 (0)	207 (100)	0 (0)	0 (0)	25 (18)
Govt. School For Disabled	0 (0)	208 (100)	2 (0)	1 (0)	30 (16)
Private School For Disabled	0 (0)	208 (100)	0 (0)	0 (0)	19 (11)
Government Others	0 (0)	208 (100)	0 (0)	0 (0)	0 (0)
Private Others	0 (0)	208 (100)	0 (0)	0 (0)	0 (0)

Note : Distance A : Less than 5 km; B : Between 5-10 km; C : 10+ km.; Source : Data Analysis is based on 2011 Census.

DISCLAIMER

The Terms of Use and Disclaimer of Datanet India Private Limited (hereinafter referred to as "Datanet") for use of this analysis report of **Mant Assembly Constituency (Mant Vidhan Sabha)** :-

1. **Assembly Factbook™** is a Registered Trade Mark owned by Datanet.
2. All the maps are sketched and graphical representation only and have not been drawn to the scale and also not to represent the actual geographical area or boundary of the unit.
3. The data for the aforesaid analysis is based on authentic sources and has been culled from the various publications of Census, CSO and NSSO for district and block level data, various central and state government departments, Central & State Elections Commissions and the concerned Returning Officers' releases, Electoral Rolls, Election results and allied publications, internal assessment, surveys, estimates and analysis. Therefore, certain adjustment of data at micro level may have been done to arrive closer to the macro data.
4. Data have been provided on an "As Is" and "As AVAILABLE" basis
5. The colours shown in the maps or diagram and charts of a particular party, alliance or AC are indicative and do not represent them.
6. This publication which includes maps, sheets, graphs and data would be the property under copyright of Datanet only. The user may use these for its internal study, analysis and research purposes. It's public display, re-selling or any commercial uses by the user are not allowed.
7. Datanet has taken due care and caution in compilation and processing of data and allied information, but does not guarantee the accuracy, adequacy or completeness of any information/analysis and will be not responsible for any errors or omissions or for the results obtained from the use of such information/analysis.
8. All the contents for the publication have been culled from various authentic sources and Datanet reasonably believes such sources to be reliable, but does not make any representations, express or implied as to the accuracy or fitness of use of such information. The information or contents of the information/analysis do not constitute advice and should not be relied upon in making (or refraining from making) any decision. Any reliance placed upon the information provided by Datanet is the sole responsibility and strictly at the user's risk.
9. In no event will Datanet be liable for any damages (including, without limitation, damages for loss of business projects, or loss of profits) arising in contract, tort or otherwise from the use of or inability to use any of its contents, or from any action taken (or refrained from being taken) as a result of using the analysis or any of its contents. Datanet its directors, owners, editors, officials, employees, distributor and agents or any associate will not be liable for any errors in the information contained or any consequences arising from the use of the contents of the provided information/analysis.
10. If any provision of these terms and conditions is held invalid or illegal or unenforceable for any reason by any court of competent jurisdiction, such provision shall be severed and the remainder of provisions of the terms and conditions shall continue in full force and effect as if the Term of Use had been executed with the invalid, illegal or unenforceable provision eliminated.
11. If there are any discrepancies in the information provided, please bring it to attention of Datanet for suitable rectification measures.

Buy Online This Complete Book At
Datanet India eBooks Store

www.indiastatpublications.com

or go directly at

[http://www.indiastatpublications.com/
Assembly_factbook/Uttar Pradesh/Mathura/ Mant](http://www.indiastatpublications.com/Assembly_factbook/Uttar%20Pradesh/Mathura/Mant)

 **indiastat**elections

ISBN : 978-93-5905-926-6



9 789359 059266