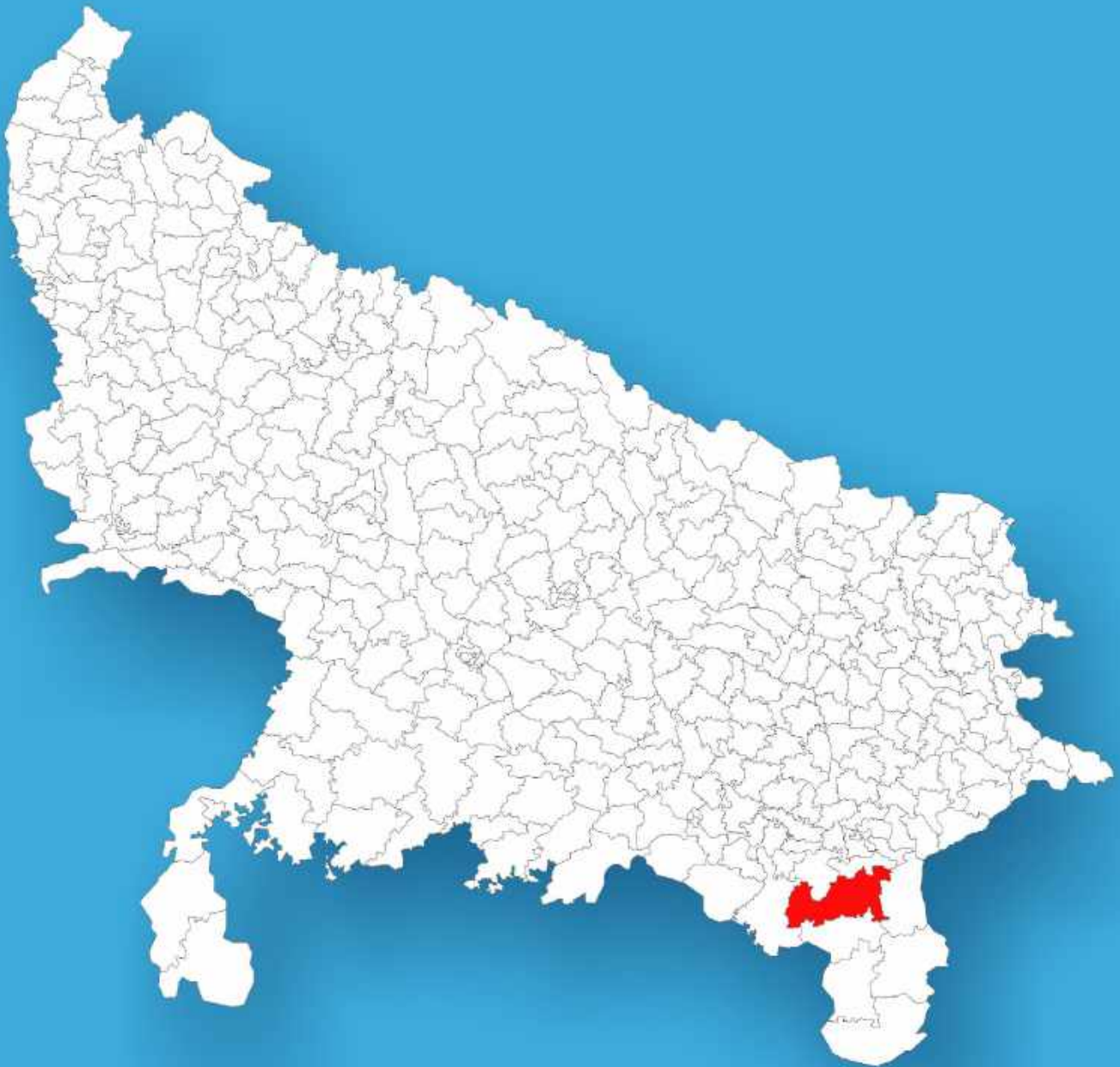




Uttar Pradesh

Assembly Factbook™

Marihan Assembly Constituency



Key Electoral Data of Marihan
Assembly Constituency (Vidhan Sabha)

Uttar Pradesh

Assembly Factbook™

Marihan Assembly Constituency



Marihan Vidhan Sabha

Editor & Director

Dr. R.K. Thukral

Research Editor

Dr. Shafeeq Rahman

**Compiled, Researched and Published by
Datanet India Pvt. Ltd.**

D-100, 1st Floor,

Okhla Industrial Area, Phase-I,

New Delhi- 110020.

Ph.: 91-11- 43580781-84

Email : support@indiastatpublications.com

Website : www.indiastatelections.com

Online Book Store :

www.indiastatpublications.com

Report No. : AFB/UP-399-0125

ISBN : 978-93-5905-870-2

First Edition : January, 2018

Eighth Updated Edition : January, 2025

Price : Rs.11500/-

US\$ 310

© Datanet India Pvt. Ltd.

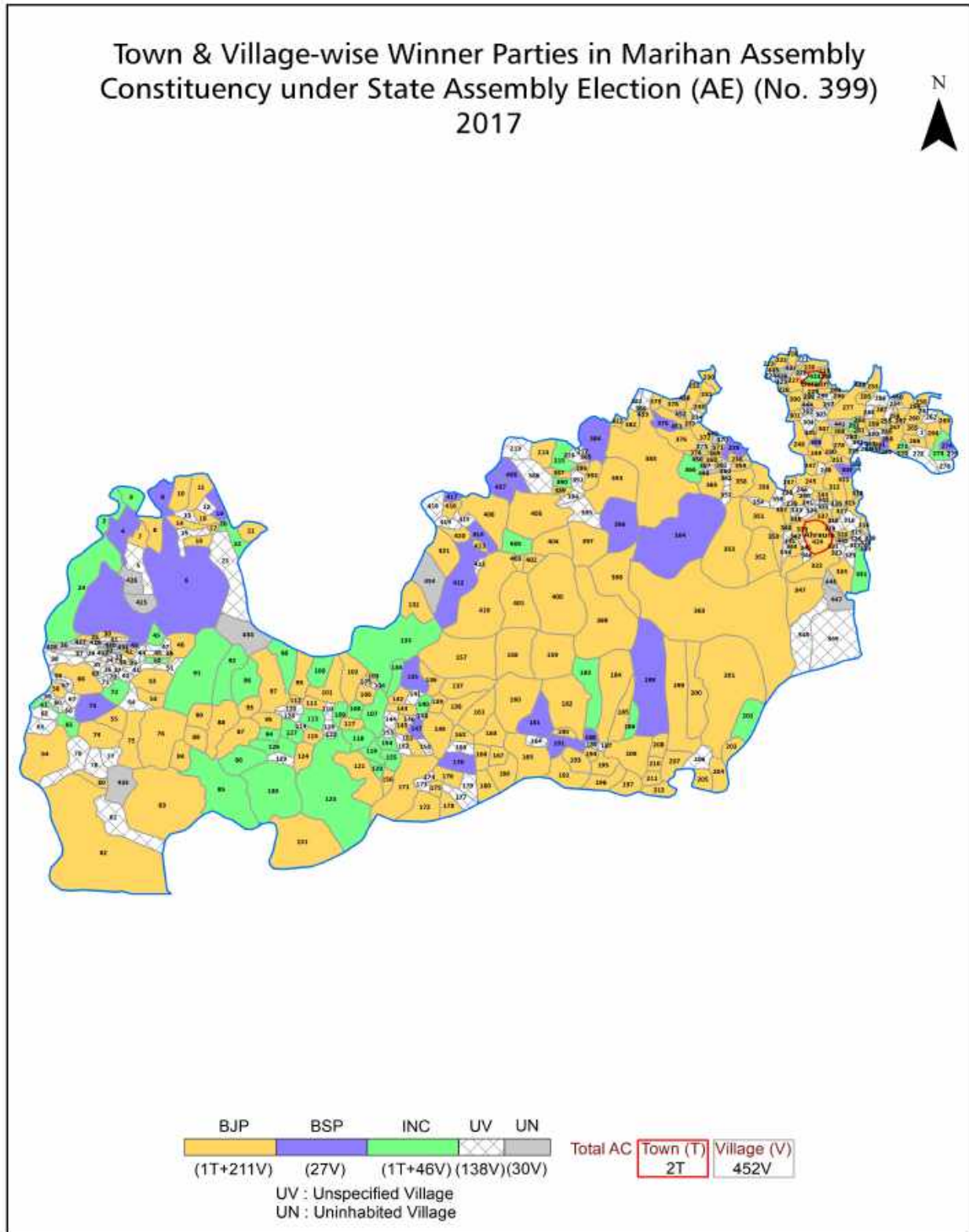
All rights reserved. No part of this book may be reproduced, stored in a retrieval system or transmitted in any form or by any means, mechanical photocopying, photographing, scanning, recording or otherwise without the prior written permission of the publisher. Please refer to Disclaimer at page no. 321 for the use of this publication.

Printed in India

Contents

No.	Particulars	Page No.
	Introduction	
1	Assembly Constituency - (Vidhan Sabha) at a Glance Features of Assembly as per Delimitation Commission of India (2008)	1-2
	Location and Political Maps	
2	Location Map Boundaries of Assembly Constituency - (Vidhan Sabha) in District Boundaries of Assembly Constituency under Parliamentary Constituency - (Lok Sabha) Town & Village-wise Winner Parties-2024, 2022, 2019, 2017, 2014, 2012 and 2009	3-11
	Administrative Setup (2011)	
3	District Sub-district Towns Villages Inhabited Villages Uninhabited Villages Village Panchayat Intermediate Panchayat	12-33
	Demographics (2011)	
4	Population Households Rural/Urban Population Towns and Villages by Population Size Sex Ratio (Total & 0-6 Years) Religious Population Social Population Literacy Rate	34-35
	Electoral Features	
5	Important Dates of Last Elections Held Electors by Gender Service Electors Voters Voters Turnout Polling Stations & Average Number of Electors per Polling Station Electors by Age Group Present Elected Representatives	36-41
	Historical Summary Election Results	
6	Vote Share of Major Parties Winning Margin (Number & Percentage) Polarity of Parties Summary Result of Assembly Segment of Parliamentary Election 2024, 2019, 2014 and 2009 Summary Result of Assembly Elections 2022, 2017 and 2012	42-51
	Polling Station Level Election Results	
7	Name and Number of Polling Station 2024, 2022, 2019, 2017, 2014, 2012 and 2009 Polling Station-wise Electors, Voters & Voters Turnout 2024, 2022, 2019, 2017, 2014, 2012 and 2009 Polling Station wise Elections Results 2024, 2022, 2019, 2017, 2014, 2012 and 2009	52-279
	Panchayat and Local Bodies Election Results	
8	Panchayat Result 2015 Urban Local Bodies Result 2012	280-299
	Share of Assembly Constituency	
9	Share of Assembly Constituency - (Vidhan Sabha) in State, District and Parliamentary Constituency - (Lok Sabha)	300
	Socio-Economic Amenities (2011)	
10	Access to Administrative Units Agricultural, Manufacturing and Industrial Commodities Demographic Indicators Education Health & Manpower Drinking Water Supply Sanitation Entertainment and Recreations Infrastructure Power Food Allocation Distribution and Marketing of Agriculture Commodities Infrastructure Transport and Road Infrastructure Communication Banking and Financial Services Land Use Irrigation Source	302-316
11	Abbreviation & Sources	317-320
12	Disclaimer	321

Location & Political Map



Administrative Setup

List of Village Panchayat & Intermediate Panchayat (Block) Name - 2011

Village Name	Village Panchayat Name	Intermediate Panchayat Name
Adhiya	Dhanval	Marihan
Ahirupur	Sonpur	Rajgarh
Ahraura	Mahuli	Jamalpur
Akbarpur	Dakhi Madapur	Jamalpur
Almapur	Hinauti Maafi	Jamalpur
Aluha	Amdaha	Narainpur
Amdaha	Alhua	Narainpur
Amoi	Amoipurya	Marihan
Amoi	Amoi	Marihan
Anandipur	Dalhi Madapur	Jamalpur
Anantpur	Tenduakala	Rajgarh
Araji Chak Barhia	Biyarahi	Jamalpur
Araji Karji	Biyarati	Jamalpur
Araji Nandpur	Shekhan	Jamalpur
Araji Rampur Urf Dubeypur	Bheeti	Rajgarh
Asarhi	Sirsi	Marihan
Atari	Marihan	Marihan
Atari	Kundrup	Rajgarh
Atari Dakshin	Rampur Atari	Marihan
Atari Uttar	Rampur Atari	Marihan
Atraila Pandey	Dhori	Marihan
Atrauli Kalan	Bamni	Rajgarh
Atrauli Khurd	Atrauli Khurd	Rajgarh
Atraura	Madihan	Marihan
Atraura	Naudihalalpur	Rajgarh
Babhani	Babhani	Jamalpur
Babhani	Bamni	Rajgarh
Babhani Thapanawa	Ptahrakhud	Marihan
Bagahi	Dhaurha	Rajgarh

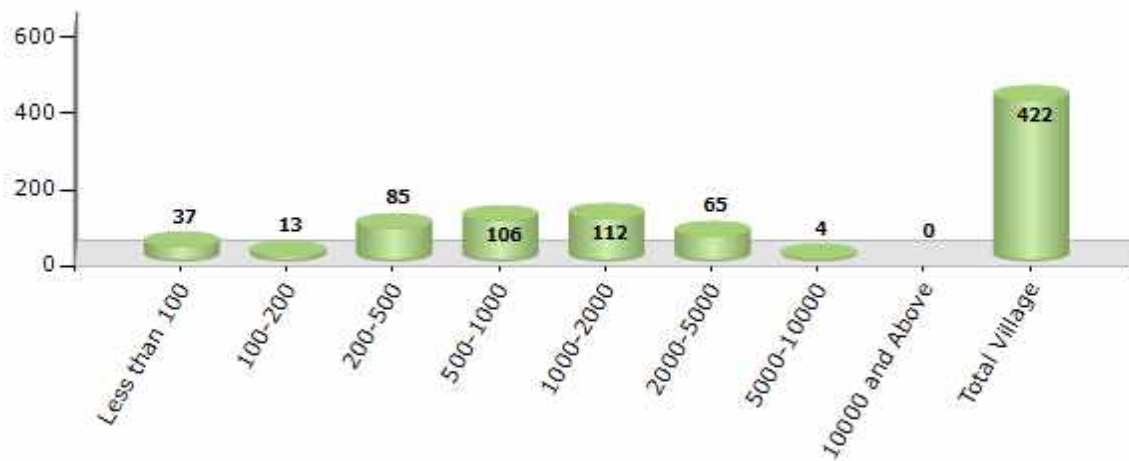
Contd....

Demographics

Number of Villages by Population Size - 2011

Less than 100	100-200	200-500	500-1000	1000-2000	2000-5000	5000-10000	10000 and Above	Total Village
37	13	85	106	112	65	4	0	422

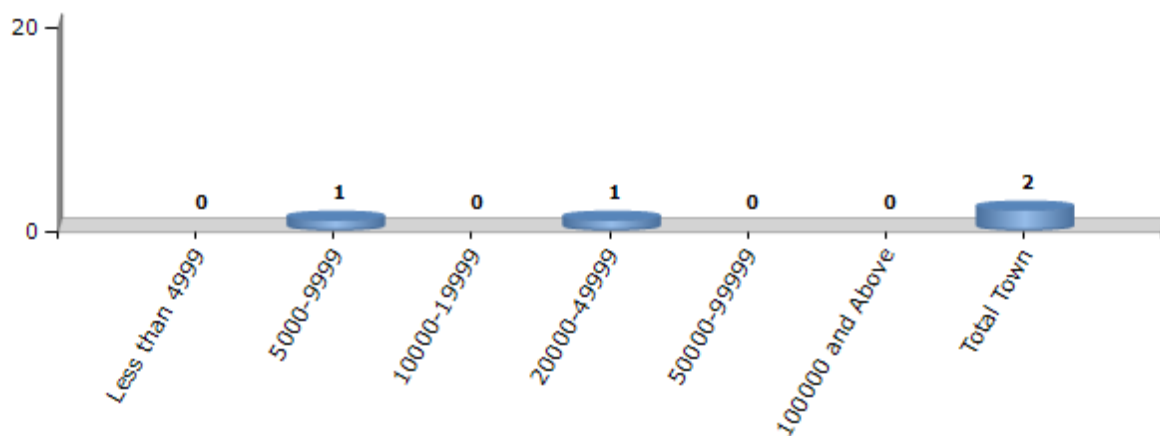
Number of Villages by Population Size - 2011



Number of Towns by Population Size - 2011

Less than 4999	5000-9999	10000-19999	20000-49999	50000-99999	100000 and Above	Total Town
0	1	0	1	0	0	2

Number of Towns by Population Size - 2011

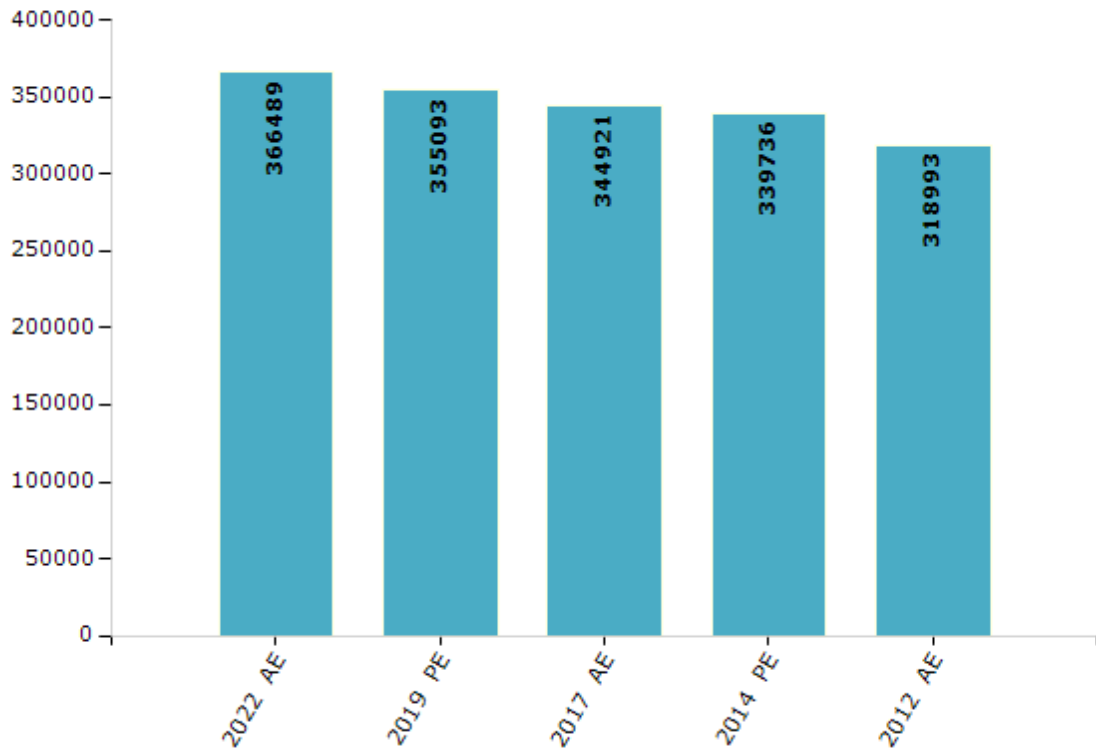


Electoral Features

Electors by Male & Female

Year	Male	Female	Others	Total	Year	Male	Female	Others	Total
2022 AE	192054	174421	14	366489	1991 AE	-	-	-	-
2019 PE	186937	168144	12	355093	1989 AE	-	-	-	-
2017 AE	181516	163393	12	344921	1985 AE	-	-	-	-
2014 PE	180648	159077	11	339736	1980 AE	-	-	-	-
2012 AE	172141	146834	18	318993	1977 AE	-	-	-	-
2009 PE	-	-	-	-	1974 AE	-	-	-	-
2007 AE	-	-	-	-	1969 AE	-	-	-	-
2004 PE	-	-	-	-	1967 AE	-	-	-	-
2002 AE	-	-	-	-	1962 AE	-	-	-	-
1999 PE	-	-	-	-	1957 AE	-	-	-	-
1996 AE	-	-	-	-	1952 AE	-	-	-	-
1993 AE	-	-	-	-					

Number of Electors



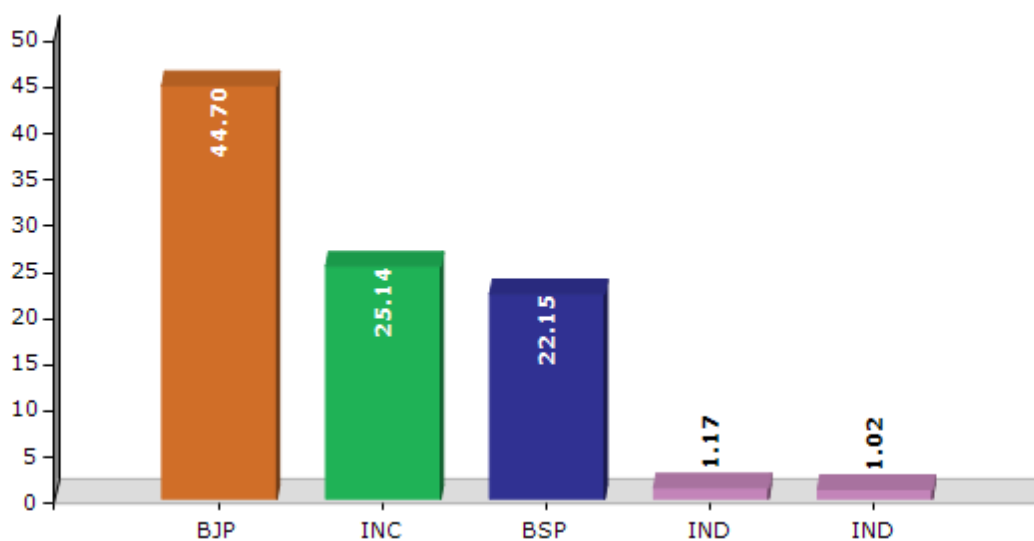
Note : AE : Assembly Election, PE : Assembly Segment of Parliamentary Election

Historical Summary Election Results

Summary Result of Assembly Election - 2017

Candidate Name	Party	Votes	Votes %
Rama Shankar Singh	BJP	106517	44.7
Lalitesh Pati Tripathi	INC	59919	25.14
Awadhesh Kumar Singh	BSP	52782	22.15
Siddharth Shekhar Bauddh	IND	2787	1.17
Rajendra Prasad	IND	2421	1.02
Kaushilya	NINSHAD	2252	0.95
Arvind	CPM	2081	0.87
Rajaram	IND	1500	0.63
Ram Lautan Singh	BMUP	1470	0.62
Basant Lal	CPI(ML)(L)	1141	0.48
Kailash Nath	IND	858	0.36
Ajay Singh	IND	715	0.3
Paras Nath	AASAMP	644	0.27
Neermala	BRPI	599	0.25
	NOTA	2614	1.1

Votes Percentage of Top Parties - 2017



Polling Station Level Election Results

Number and Name of Polling Stations (PS) (2022)

Number of Polling Stations	Name of Polling Stations	Number of Polling Stations	Name of Polling Stations
1	P.S. Dewari Uattar Room 1	22	Panchayat Bhawan Kotwa Pandey
2	P.S. Dewari Uattar Room 2	23	P.M.S. Kotwa Pandey
3	P.S. Rampur Thakur Dayal	24	P.S. Majhawani
4	P.S. Kiraha	25	P.M.S. Kubari Patehara Room 1
5	P.S. Gulalpur Room 1	26	P.M.S. Kubari Patehara Room 2
6	P.S. Gulalpur Room 2	27	P.S. Pateharakalan Madhya No.2
7	P.S. Hardi Mishra Room 1	28	P.S. Baharachhatha Room 1
8	P.S. Hardi Mishra Room 2	29	P.S. Baharachhatha Room 2
9	P.S. Puranipur	30	P.S. Muskira
10	P.S. Godatutava	31	P.S. Kuhaki
11	P.S. Hadaura Room 1	32	P.S. Newarhiya
12	P.S. Hadaura Room 2	33	P.S. Khanawar Majhari Room 1
13	P.M.S. Belahara	34	P.S. Khanawar Majhari Room 2
14	Panchayat Bhawan Hardi Khurd	35	P.S. Gohiya Kalan
15	P.S. Paramapur	36	P.S. Patharaur
16	P.S. Adhiya	37	P.S. Dewari Kataiya
17	P.S. Banawaripur	38	P.S. Amoi Purava Room 1
18	P.S. Dhanawal Room 1	39	P.S. Amoi Purava Room 2
19	P.S. Dhanawal Room 2	40	P.S. Tauaa
20	P.S. Bahuti Room 1	41	P.S. Lalapur Room 1
21	P.S. Bahuti Room 2	42	P.S. Lalapur Room 2

Contd....

Polling Station Level Election Results

Polling Station-wise Votes Secured by Overall Top Five Parties in Marihan Assembly in Assembly Election (AE) under Mirzapur Parliamentary Constituency in Uttar Pradesh (2022)

Number of Polling Station	Winner - Rama Shankar Singh (BJP)	Runner-up - Narendra Singh Kusawaha (BSP)	3rd - Ravindra Bahadur Singh Patel (SP)	4th - Awadhesh Kumar Singh Alias Pappu Patel (APNDLK)	5th - Gita Devi Kol (INC)	NOTA	Other	Total Votes Secured
36	363	114	54	92	18	5	61	707
37	378	53	87	15	18	6	26	583
38	259	36	126	27	3	1	39	491
39	209	53	85	16	14	2	67	446
40	522	19	29	19	5	5	45	644
41	238	6	83	82	6	6	31	452
42	275	43	49	41	5	9	30	452
43	269	11	42	94	9	12	20	457
44	191	85	94	109	0	1	30	510
45	300	20	96	92	9	3	44	564
46	183	54	40	10	10	2	17	316
47	401	59	44	99	14	2	18	637
48	330	52	65	108	45	7	56	663
49	146	31	105	117	2	5	11	417
50	122	41	81	148	7	6	33	438
51	315	37	25	65	4	6	63	515
52	116	95	76	22	9	1	17	336
53	214	46	52	99	11	10	44	476
54	301	12	78	64	16	4	25	500
55	322	19	120	58	5	7	73	604
56	384	9	34	29	4	4	25	489
57	165	270	50	71	23	1	33	613
58	190	105	143	50	10	10	26	534
59	306	138	57	140	12	1	119	773
60	402	56	135	77	4	9	34	717
61	158	273	59	18	8	1	35	552
62	137	19	91	87	4	7	36	381
63	190	4	8	147	7	0	8	364
64	302	67	39	155	7	5	54	629
65	459	20	60	136	9	9	47	740
66	263	47	60	169	11	5	43	598
67	317	16	43	102	13	10	49	550
68	179	146	4	97	44	3	28	501
69	368	28	58	148	28	14	61	705
70	379	48	48	71	23	8	114	691

Contd....

Polling Station Level Election Results

Winner, Runner-up and 3rd Party Position & Winning Margin According to Polling Stations in Marihan Assembly in Assembly Election (AE) under Mirzapur Parliamentary Constituency in Uttar Pradesh (2022)

Polling Station Number	Winner Party	Winner Votes (%)	Runner-up Party	Runner-up Votes (%)	Winning Margin Votes (%)	Third Party	Third Party Votes (%)	Other Votes (%)
71	BJP	296 (53.14)	SP	61 (10.95)	235 (42.19)	BSP	60 (10.77)	140 (25.13)
72	BJP	205 (36.74)	SP	90 (16.13)	115 (20.61)	APNDLK	72 (12.9)	191 (34.23)
73	BJP	281 (40.03)	APNDLK	108 (15.38)	173 (24.65)	BSP	102 (14.53)	211 (30.06)
74	BJP	173 (56.91)	SP	57 (18.75)	116 (38.16)	APNDLK	19 (6.25)	55 (18.09)
75	BJP	175 (56.45)	APNDLK	51 (16.45)	124 (40)	SP	26 (8.39)	58 (18.71)
76	BJP	343 (56.14)	SP	86 (14.08)	257 (42.06)	APNDLK	78 (12.77)	104 (17.02)
77	BJP	332 (36.28)	APNDLK	196 (21.42)	136 (14.86)	BSP	167 (18.25)	220 (24.04)
78	BJP	307 (39.11)	BSP	206 (26.24)	101 (12.87)	APNDLK	95 (12.1)	177 (22.55)
79	BJP	207 (36.77)	APNDLK	178 (31.62)	29 (5.15)	BSP	79 (14.03)	99 (17.58)
80	BJP	467 (67.88)	APNDLK	55 (7.99)	412 (59.89)	SP	53 (7.7)	113 (16.42)
81	BJP	235 (33.24)	BSP	216 (30.55)	19 (2.69)	APNDLK	106 (14.99)	150 (21.22)
82	BJP	246 (35.24)	APNDLK	140 (20.06)	106 (15.18)	BSP	102 (14.61)	210 (30.09)
83	BJP	185 (24.7)	BSP	174 (23.23)	11 (1.47)	SP	143 (19.09)	247 (32.98)
84	BSP	190 (33.99)	BJP	177 (31.66)	13 (2.33)	SP	87 (15.56)	105 (18.78)
85	BJP	189 (37.8)	BSP	106 (21.2)	83 (16.6)	INC	57 (11.4)	148 (29.6)
86	BJP	296 (39.84)	BSP	126 (16.96)	170 (22.88)	APNDLK	125 (16.82)	196 (26.38)
87	BJP	152 (30.52)	BSP	122 (24.5)	30 (6.02)	SP	77 (15.46)	147 (29.52)
88	BJP	336 (51.69)	APNDLK	109 (16.77)	227 (34.92)	BSP	65 (10)	140 (21.54)
89	BJP	223 (62.64)	APNDLK	71 (19.94)	152 (42.7)	BSP	17 (4.78)	45 (12.64)
90	BSP	109 (52.91)	BJP	47 (22.82)	62 (30.09)	APNDLK	24 (11.65)	26 (12.62)
91	BJP	251 (52.4)	APNDLK	109 (22.76)	142 (29.64)	INC	40 (8.35)	79 (16.49)
92	BJP	240 (37.56)	BSP	170 (26.6)	70 (10.96)	APNDLK	102 (15.96)	127 (19.87)
93	BJP	256 (35.61)	BSP	166 (23.09)	90 (12.52)	SP	88 (12.24)	209 (29.07)
94	SP	159 (22.65)	BJP	149 (21.23)	10 (1.42)	APNDLK	144 (20.51)	250 (35.61)
95	BJP	242 (46.01)	APNDLK	189 (35.93)	53 (10.08)	BSP	50 (9.51)	45 (8.56)
96	BJP	270 (49.63)	APNDLK	118 (21.69)	152 (27.94)	BSP	106 (19.49)	50 (9.19)
97	BJP	300 (47.32)	BSP	223 (35.17)	77 (12.15)	APNDLK	59 (9.31)	52 (8.2)
98	BJP	204 (62.01)	APNDLK	56 (17.02)	148 (44.99)	BSP	41 (12.46)	28 (8.51)
99	BJP	216 (46.65)	APNDLK	91 (19.65)	125 (27)	BSP	81 (17.49)	75 (16.2)
100	BJP	222 (48.58)	APNDLK	73 (15.97)	149 (32.61)	BSP	71 (15.54)	91 (19.91)
101	BJP	328 (50.31)	BSP	163 (25)	165 (25.31)	APNDLK	49 (7.52)	112 (17.18)
102	BJP	235 (45.99)	BSP	150 (29.35)	85 (16.64)	APNDLK	73 (14.29)	53 (10.37)
103	BSP	163 (48.37)	BJP	114 (33.83)	49 (14.54)	APNDLK	37 (10.98)	23 (6.82)
104	APNDLK	267 (40.33)	BJP	223 (33.69)	44 (6.64)	BSP	94 (14.2)	78 (11.78)
105	BJP	245 (47.12)	APNDLK	137 (26.35)	108 (20.77)	SP	45 (8.65)	93 (17.88)

Contd....

Socio-Economic Amenities - Rural

Access to Education Facilities

Particulars	Number of Villages (% of Population)				
	Available	Not Available	If Not Available (Distance of Nearest Facility)		
			A	B	C
Govt. Primary School	248 (75)	174 (25)	64 (4)	4 (0)	3 (0)
Private Primary School	25 (9)	397 (91)	5 (0)	0 (0)	0 (0)
Govt. Middle School	123 (46)	299 (54)	164 (24)	8 (1)	3 (0)
Private Middle School	22 (9)	400 (91)	16 (3)	4 (1)	0 (0)
Govt. Secondary School	22 (8)	400 (92)	89 (17)	60 (15)	17 (5)
Private Secondary School	18 (7)	404 (93)	92 (22)	67 (13)	5 (2)
Govt. Senior Secondary School	14 (6)	408 (94)	99 (20)	62 (18)	21 (6)
Private Senior Secondary School	15 (6)	407 (94)	74 (20)	59 (12)	29 (3)
Govt. Arts and Science Degree College	15 (5)	407 (95)	47 (11)	47 (10)	95 (27)
Private Arts and Science Degree College	13 (5)	409 (95)	27 (6)	31 (8)	39 (9)
Govt. Engineering College	0 (0)	422 (100)	8 (2)	18 (4)	198 (51)
Private Engineering College	2 (0)	420 (100)	4 (1)	5 (1)	8 (2)
Govt. Medicine College	0 (0)	422 (100)	11 (2)	25 (8)	188 (46)
Private Medicine College	2 (1)	420 (99)	2 (0)	3 (0)	7 (2)
Govt. Management Institute	0 (0)	422 (100)	5 (1)	4 (1)	180 (43)
Private Management Institute	1 (0)	421 (100)	1 (0)	2 (0)	31 (9)
Govt. Polytechnic	0 (0)	422 (100)	5 (1)	5 (1)	293 (69)
Private Polytechnic	2 (1)	420 (99)	6 (2)	3 (1)	12 (3)
Govt. Vocational Training School/ITI	0 (0)	422 (100)	2 (0)	8 (3)	235 (53)
Private Vocational Training School/ITI	5 (2)	417 (98)	27 (6)	21 (5)	33 (9)
Govt. Non Formal Training Centre	12 (4)	410 (96)	3 (0)	2 (1)	88 (20)
Private Non Formal Training Centre	4 (1)	418 (99)	0 (0)	6 (1)	3 (0)
Govt. School For Disabled	9 (2)	413 (98)	0 (0)	2 (1)	126 (29)
Private School For Disabled	2 (1)	420 (99)	8 (2)	4 (1)	4 (2)
Government Others	12 (4)	410 (96)	0 (0)	0 (0)	25 (5)
Private Others	1 (0)	421 (100)	0 (0)	3 (0)	0 (0)

Note : Distance A : Less than 5 km; B : Between 5-10 km; C : 10+ km.; Source : Data Analysis is based on 2011 Census.

DISCLAIMER

The Terms of Use and Disclaimer of Datanet India Private Limited (hereinafter referred to as "Datanet") for use of this analysis report of **Marihan Assembly Constituency (Marihan Vidhan Sabha) :-**

1. **Assembly Factbook™** is a Registered Trade Mark owned by Datanet.
2. All the maps are sketched and graphical representation only and have not been drawn to the scale and also not to represent the actual geographical area or boundary of the unit.
3. The data for the aforesaid analysis is based on authentic sources and has been culled from the various publications of Census, CSO and NSSO for district and block level data, various central and state government departments, Central & State Elections Commissions and the concerned Returning Officers' releases, Electoral Rolls, Election results and allied publications, internal assessment, surveys, estimates and analysis. Therefore, certain adjustment of data at micro level may have been done to arrive closer to the macro data.
4. Data have been provided on an "As Is" and "As AVAILABLE" basis
5. The colours shown in the maps or diagram and charts of a particular party, alliance or AC are indicative and do not represent them.
6. This publication which includes maps, sheets, graphs and data would be the property under copyright of Datanet only. The user may use these for its internal study, analysis and research purposes. It's public display, re-selling or any commercial uses by the user are not allowed.
7. Datanet has taken due care and caution in compilation and processing of data and allied information, but does not guarantee the accuracy, adequacy or completeness of any information/analysis and will be not responsible for any errors or omissions or for the results obtained from the use of such information/analysis.
8. All the contents for the publication have been culled from various authentic sources and Datanet reasonably believes such sources to be reliable, but does not make any representations, express or implied as to the accuracy or fitness of use of such information. The information or contents of the information/analysis do not constitute advice and should not be relied upon in making (or refraining from making) any decision. Any reliance placed upon the information provided by Datanet is the sole responsibility and strictly at the user's risk.
9. In no event will Datanet be liable for any damages (including, without limitation, damages for loss of business projects, or loss of profits) arising in contract, tort or otherwise from the use of or inability to use any of its contents, or from any action taken (or refrained from being taken) as a result of using the analysis or any of its contents. Datanet its directors, owners, editors, officials, employees, distributor and agents or any associate will not be liable for any errors in the information contained or any consequences arising from the use of the contents of the provided information/analysis.
10. If any provision of these terms and conditions is held invalid or illegal or unenforceable for any reason by any court of competent jurisdiction, such provision shall be severed and the remainder of provisions of the terms and conditions shall continue in full force and effect as if the Term of Use had been executed with the invalid, illegal or unenforceable provision eliminated.
11. If there are any discrepancies in the information provided, please bring it to attention of Datanet for suitable rectification measures.

**Buy Online This Complete Book At
Datanet India eBooks Store**

www.indiastatpublications.com

or go directly at

[http://www.indiastatpublications.com/
Assembly_factbook/Uttar Pradesh/Mirzapur/ Marihan](http://www.indiastatpublications.com/Assembly_factbook/Uttar%20Pradesh/Mirzapur/Marihan)

 **indiastat**elections

ISBN : 978-93-5905-870-2



9 789359 058702