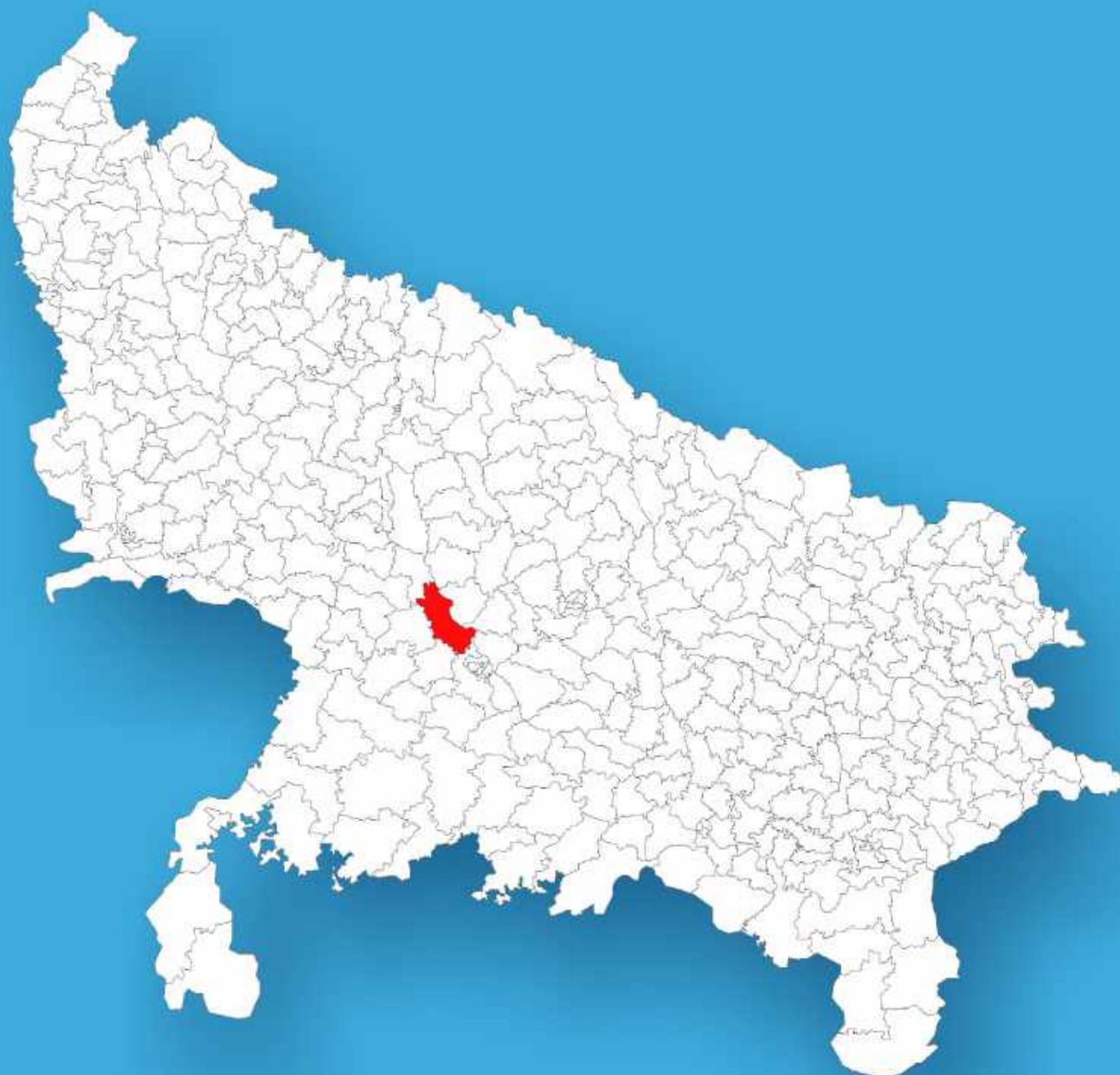




Uttar Pradesh

# Assembly Factbook™

Bilhaur Assembly Constituency



Key Electoral Data of Bilhaur  
Assembly Constituency (Vidhan Sabha)

Uttar Pradesh

# **Assembly Factbook™**

Bilhaur Assembly Constituency



Bilhaur Vidhan Sabha

**Editor & Director**

Dr. R.K. Thukral

**Research Editor**

Dr. Shafeeq Rahman

**Compiled, Researched and Published by  
Datanet India Pvt. Ltd.**

D-100, 1st Floor,

Okhla Industrial Area, Phase-I,

New Delhi- 110020.

Ph.: 91-11- 43580781-84

Email : support@indiastatpublications.com

Website : www.indiastatelections.com

**Online Book Store :**

www.indiastatpublications.com

**Report No. :** AFB/UP-209-0125

**ISBN :** 978-93-5905-936-5

**First Edition :** January, 2018

**Eighth Updated Edition :** January, 2025

**Price :** Rs.11500/-

US\$ 310

**© Datanet India Pvt. Ltd.**

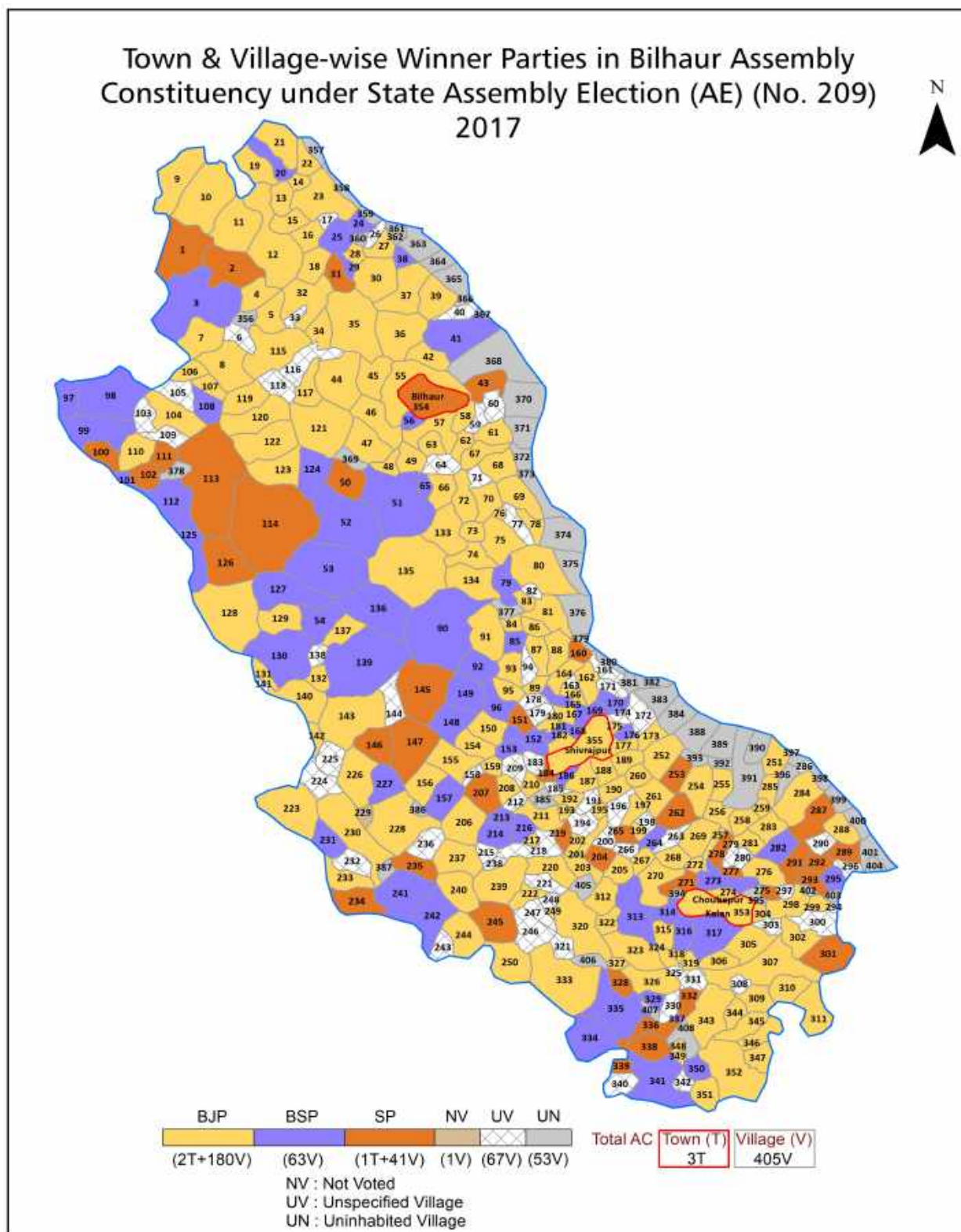
All rights reserved. No part of this book may be reproduced, stored in a retrieval system or transmitted in any form or by any means, mechanical photocopying, photographing, scanning, recording or otherwise without the prior written permission of the publisher. Please refer to Disclaimer at page no. 374 for the use of this publication.

Printed in India

No.	Particulars	Page No.
	<b>Introduction</b>	
1	Assembly Constituency - (Vidhan Sabha) at a Glance   Features of Assembly as per Delimitation Commission of India (2008)	1-2
	<b>Location and Political Maps</b>	
2	Location Map   Boundaries of Assembly Constituency - (Vidhan Sabha) in District   Boundaries of Assembly Constituency under Parliamentary Constituency - (Lok Sabha)   Town & Village-wise Winner Parties-2024, 2022, 2019, 2017, 2014, 2012 and 2009	3-11
	<b>Administrative Setup (2011)</b>	
3	District   Sub-district   Towns   Villages   Inhabited Villages   Uninhabited Villages   Village Panchayat   Intermediate Panchayat	12-30
	<b>Demographics (2011)</b>	
4	Population   Households   Rural/Urban Population   Towns and Villages by Population Size   Sex Ratio (Total & 0-6 Years)   Religious Population   Social Population   Literacy Rate	31-32
	<b>Electoral Features</b>	
5	Important Dates of Last Elections Held   Electors by Gender   Service Electors   Voters   Voters Turnout   Polling Stations & Average Number of Electors per Polling Station   Electors by Age Group   Present Elected Representatives	33-38
	<b>Historical Summary Election Results</b>	
6	Vote Share of Major Parties   Winning Margin (Number & Percentage)   Polarity of Parties   Summary Result of Assembly Segment of Parliamentary Election 2024, 2019, 2014, 2009, 2004 and 1999   Summary Result of Assembly Elections 2022, 2017, 2012, 2007, 2002, 1996, 1993, 1991, 1989, 1985, 1980, 1977, 1974, 1969, 1967, 1962, 1957 and 1952	39-65
	<b>Polling Station Level Election Results</b>	
7	Name and Number of Polling Station 2024, 2022, 2019, 2017, 2014, 2012 and 2009   Polling Station-wise Electors, Voters & Voters Turnout 2024, 2022, 2019, 2017, 2014, 2012 and 2009   Polling Station wise Elections Results 2024, 2022, 2019, 2017, 2014, 2012 and 2009	66-328
8	<b>Panchayat and Local Bodies Election Results</b> Panchayat Result 2015   Urban Local Bodies Result 2012	329-352
	<b>Share of Assembly Constituency</b>	
9	Share of Assembly Constituency - (Vidhan Sabha) in State, District and Parliamentary Constituency - (Lok Sabha)	353
	<b>Socio-Economic Amenities (2011)</b>	
10	Access to Administrative Units   Agricultural, Manufacturing and Industrial Commodities   Demographic Indicators   Education   Health & Manpower   Drinking Water Supply   Sanitation   Entertainment and Recreations Infrastructure   Power   Food Allocation Distribution and Marketing of Agriculture Commodities Infrastructure   Transport and Road Infrastructure   Communication   Banking and Financial Services   Land Use   Irrigation Source	355-369
11	<b>Abbreviation &amp; Sources</b>	370-373
12	<b>Disclaimer</b>	374



## Location & Political Map



## Administrative Setup

### List of Village Panchayat & Intermediate Panchayat (Block) Name - 2011

Village Name	Village Panchayat Name	Intermediate Panchayat Name
Ahmadpur Nadiha	Gathava	Kakwan
Ajauli	Nevada Mahasaran	Shivrajpur
Akbarpur Senga	Akbarpur Sang	Bilhaur
Alampur	Choudhary Pur	Chaubepur
Allipur	Allipur	Kakwan
Allipur Bhseni	Navadanarapat	Shivrajpur
Amiliha	Amliha	Chaubepur
Anei	Anei	Bilhaur
Ankin	Ankin	Bilhaur
Anti	Marhmet Nagar	Shivrajpur
Araji Isepur	Arajieshapur	Kakwan
Araul	Araul	Bilhaur
Arjunpur	Davipur Sarai	Bilhaur
Atva	Suoura	Chaubepur
Aurangpur Sabhi	Aourangpur Sanbhi	Bilhaur
Auro Taharpur	Aurotaharpur	Kakwan
Avabakarpur	Ghanshayampur	Chaubepur
Babhiyapur	Babhiyapur	Bilhaur
Bachhana	Bachhana	Kakwan
Bachipur	Bacheepur	Shivrajpur
Badanpur	Tilokpur	Chaubepur
Bahlolpur	Bahlolpur	Chaubepur
Bahramapur	Bhatpura Shivrajpur	Shivrajpur
Bahrapur	Bahrempur	Chaubepur
Baidani	Sandoola	Chaubepur
Baira Khanpur	Baira Khanpur	Bilhaur
Bairi	Bairi	Shivrajpur
Bairi Alipur	Bari Alipur	Bilhaur
Bajidpur	-	Chaubepur

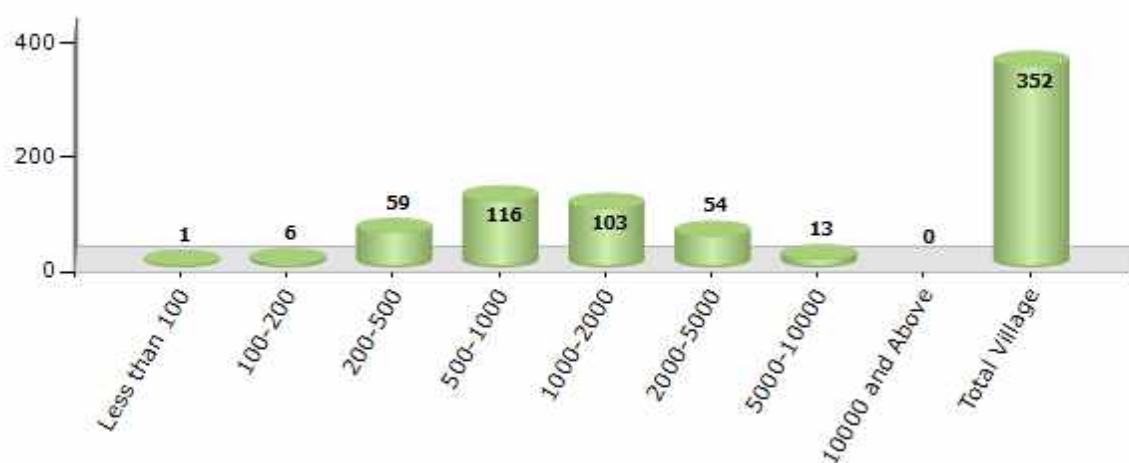
Contd....

## Demographics

### Number of Villages by Population Size - 2011

Less than 100	100-200	200-500	500-1000	1000-2000	2000-5000	5000-10000	10000 and Above	Total Village
1	6	59	116	103	54	13	0	352

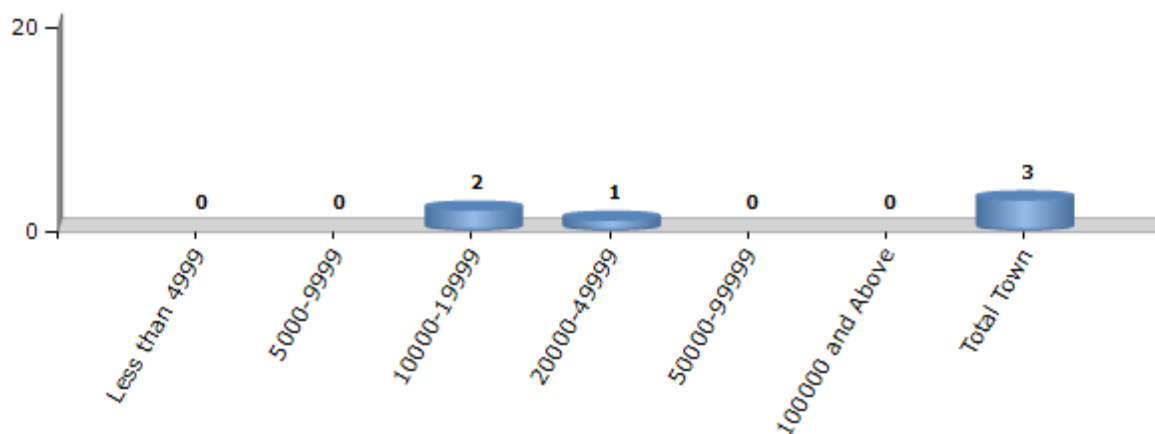
Number of Villages by Population Size - 2011



### Number of Towns by Population Size - 2011

Less than 4999	5000-9999	10000-19999	20000-49999	50000-99999	100000 and Above	Total Town
0	0	2	1	0	0	3

Number of Towns by Population Size - 2011



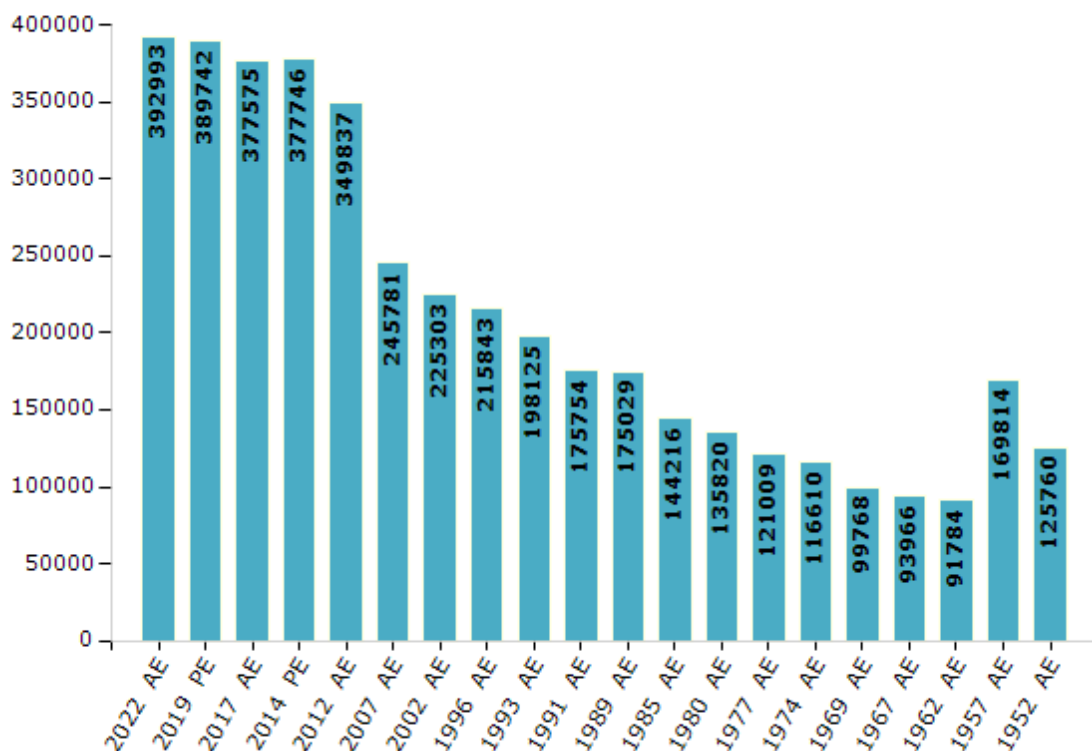
## Electoral Features

### Electors by Male & Female

Year	Male	Female	Others	Total
2022 AE	212756	180220	17	392993
2019 PE	210563	179166	13	389742
2017 AE	206416	171158	1	377575
2014 PE	208067	169668	11	377746
2012 AE	196939	152896	2	349837
2009 PE	-	-	-	-
2007 AE	135320	110461	-	245781
2004 PE	-	-	-	-
2002 AE	125394	99909	-	225303
1999 PE	-	-	-	-
1996 AE	123236	92607	-	215843
1993 AE	108970	89155	-	198125

Year	Male	Female	Others	Total
1991 AE	97831	77923	-	175754
1989 AE	97382	77647	-	175029
1985 AE	79337	64879	-	144216
1980 AE	80607	55213	-	135820
1977 AE	66567	54442	-	121009
1974 AE	62983	53627	-	116610
1969 AE	54890	44878	-	99768
1967 AE	-	-	-	93966
1962 AE	-	-	-	91784
1957 AE	-	-	-	169814
1952 AE	-	-	-	125760

Number of Electors



**Note :** AE : Assembly Election, PE : Assembly Segment of Parliamentary Election

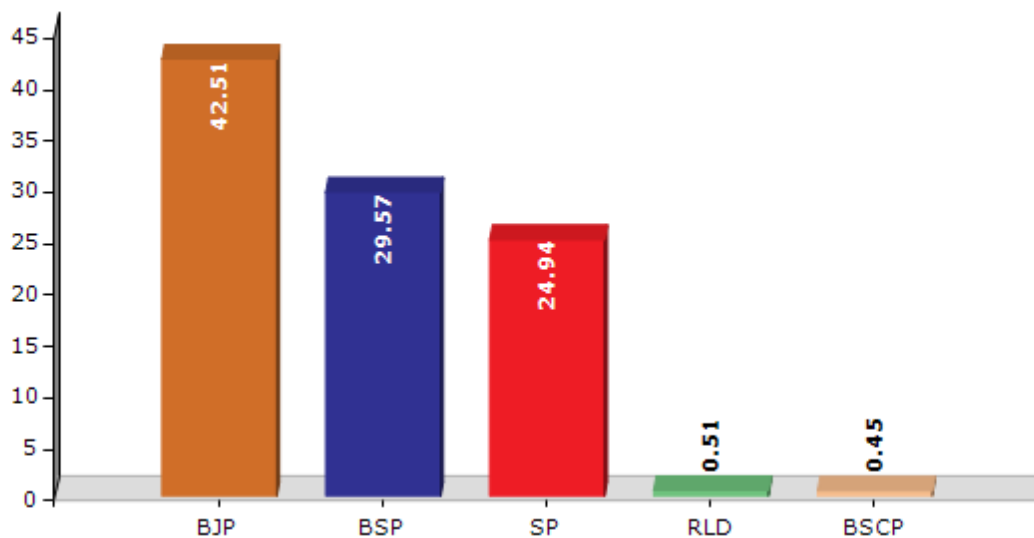


## Historical Summary Election Results

### Summary Result of Assembly Election - 2017

Candidate Name	Party	Votes	Votes %
Bhagwati Prasad Sagar	BJP	102326	42.51
Kamlesh Chandra Diwakar	BSP	71160	29.57
Shiv Kumar Beriya	SP	60023	24.94
Narpat Singh	RLD	1239	0.51
Subhash	BSCP	1092	0.45
Surendra Singh	BSRD	858	0.36
Baburam	VPI	781	0.32
Manoj Kumar	IND	627	0.26
Ram Avatar	LD	613	0.25
	NOTA	1965	0.82

Votes Percentage of Top Parties - 2017



## Polling Station Level Election Results

### Number and Name of Polling Stations (PS) (2022)

Number of Polling Stations	Name of Polling Stations	Number of Polling Stations	Name of Polling Stations
1	Pr. School Gangupur Room 1	22	Ups Ankin Room 2
2	Ups Hasoli Kajiganj Room 1	23	Ps Saraydastam Khan Room 1
3	Ps Chitamau Room 1	24	Vidhya Bhawan Inter Callage Araul Room 1
4	Ps Gajna Room 1	25	Vidhya Bhawan Inter Callage Araul Room 2
5	Ups Dhaurahara Room 1	26	Ps Bahrapur Room 1
6	Ups Dhaurahara Room 2	27	Ps Gilvat Aminabad Room 1
7	Ps Hilalpur Room 1	28	Ps Medua Room 1
8	Laxmi Narayan Inter Callage Pihani Majbut Nagar Room 1	29	Ps Medua Room 2
9	Laxmi Narayan Inter Callage Pihani Majbut Nagar Room 2	30	Ps Gujapur Room 1
10	Laxmi Narayan Inter Callage Pihani Majbut Nagar Room 3	31	Ps Gujapur Room 2
11	Ps Khadamau Room 1	32	Ps Berrakhanpur Room 1
12	Ps Khadamau Room 2	33	Ps Khaspur Room 1
13	Ps Sahijana Khand Baranda Room 1	34	Ups Bakothi Room 1
14	Ups Baranda Room 1	35	Ups Bakothi Room 2
15	Ups Baranda Room 2	36	Ps Saraiya Bhud Room 1
16	Ups Baranda Room 3	37	Ps Bavanjhala Mujffarpur Room 1
17	Ps Halpura Room 1	38	Ps Bavanjhala Mujffarpur Room 2
18	Ps Halpura Room 2	39	Ps Sabhiyapur Room 1
19	Ps Sheshpur Dharmshala Room 1	40	Ps Sanjati Badshahpur Room 1
20	Ps Sheshpur Dharmshala Room 2	41	Ps Champatpur Room 1
21	Ups Ankin Room 1	42	Ups Nasiyapur Room 1

Contd....

## Polling Station Level Election Results

### Polling Station-wise Votes Secured by Overall Top Five Parties in Bilhaur Assembly in Assembly Election (AE) under Misrikh Parliamentary Constituency in Uttar Pradesh (2022)

Number of Polling Station	Winner - Rahul Bachha (BJP)	Runner-up - Rachna Singh Gautam (SP)	3rd - Madhu Singh Gautam (BSP)	4th - Usha Rani Kori (INC)	5th - Monu Babu (VPI)	NOTA	Other	Total Votes Secured
36	191	161	72	0	1	1	3	429
37	237	124	129	5	7	10	13	525
38	207	151	68	4	3	1	8	442
39	216	82	53	6	5	3	4	369
40	376	171	127	7	7	2	12	702
41	228	209	141	3	3	4	3	591
42	350	43	41	1	4	3	2	444
43	544	127	32	1	2	5	5	716
44	324	223	126	9	5	5	17	709
45	365	49	5	6	5	10	5	445
46	244	70	17	8	7	2	8	356
47	87	40	392	4	1	0	12	536
48	305	33	211	0	7	7	8	571
49	197	487	78	4	4	10	26	806
50	149	429	34	2	5	4	2	625
51	11	411	9	0	0	4	5	440
52	27	501	14	2	3	3	4	554
53	123	501	4	2	9	3	10	652
54	352	237	8	2	2	3	7	611
55	181	422	1	4	1	4	3	616
56	74	409	3	1	0	5	2	494
57	275	165	4	2	2	0	5	453
58	258	58	6	6	1	0	0	329
59	257	208	60	3	1	3	9	541
60	287	130	19	3	1	1	3	444
61	33	436	3	1	1	3	2	479
62	54	444	1	0	1	2	4	506
63	259	228	23	2	0	2	4	518
64	132	98	4	1	1	1	1	238
65	148	510	16	0	5	1	12	692
66	428	147	21	7	2	5	6	616
67	249	110	20	3	0	0	4	386
68	215	115	93	4	1	2	11	441
69	390	132	39	0	2	0	5	568
70	236	188	12	6	3	1	4	450

Contd....

## Polling Station Level Election Results

**Winner, Runner-up and 3rd Party Position & Winning Margin According to Polling Stations in Bilhaur Assembly in Assembly Election (AE) under Misrikh Parliamentary Constituency in Uttar Pradesh (2022)**

Polling Station Number	Winner Party	Winner Votes (%)	Runner-up Party	Runner-up Votes (%)	Winning Margin Votes (%)	Third Party	Third Party Votes (%)	Other Votes (%)
71	BJP	305 (68.54)	SP	110 (24.72)	195 (43.82)	BSP	22 (4.94)	8 (1.8)
72	BJP	159 (50.32)	SP	125 (39.56)	34 (10.76)	BSP	24 (7.59)	8 (2.53)
73	BJP	427 (75.71)	SP	75 (13.3)	352 (62.41)	BSP	31 (5.5)	31 (5.5)
74	BJP	404 (68.24)	SP	126 (21.28)	278 (46.96)	BSP	44 (7.43)	18 (3.04)
75	BJP	114 (38)	SP	98 (32.67)	16 (5.33)	BSP	75 (25)	13 (4.33)
76	BJP	442 (59.41)	SP	167 (22.45)	275 (36.96)	BSP	106 (14.25)	29 (3.9)
77	BJP	265 (63.25)	SP	138 (32.94)	127 (30.31)	BSP	4 (0.95)	12 (2.86)
78	BJP	202 (55.96)	BSP	76 (21.05)	126 (34.91)	SP	74 (20.5)	9 (2.49)
79	SP	388 (48.62)	BJP	379 (47.49)	9 (1.13)	VPI	4 (0.5)	27 (3.38)
80	BJP	287 (46.07)	SP	163 (26.16)	124 (19.91)	BSP	140 (22.47)	33 (5.3)
81	BJP	321 (48.64)	SP	222 (33.64)	99 (15)	BSP	91 (13.79)	26 (3.94)
82	BJP	239 (56.24)	BSP	106 (24.94)	133 (31.3)	SP	59 (13.88)	21 (4.94)
83	BJP	315 (58.77)	BSP	112 (20.9)	203 (37.87)	SP	81 (15.11)	28 (5.22)
84	SP	440 (49.33)	BJP	381 (42.71)	59 (6.62)	BSP	57 (6.39)	14 (1.57)
85	SP	407 (83.06)	BJP	57 (11.63)	350 (71.43)	BSP	17 (3.47)	9 (1.84)
85A	SP	289 (62.69)	BJP	131 (28.42)	158 (34.27)	BSP	27 (5.86)	14 (3.04)
86	SP	478 (63.73)	BJP	184 (24.53)	294 (39.2)	BSP	54 (7.2)	34 (4.53)
87	SP	849 (90.22)	BJP	49 (5.21)	800 (85.01)	BSP	18 (1.91)	25 (2.66)
88	SP	620 (89.47)	BJP	62 (8.95)	558 (80.52)	BSP	5 (0.72)	6 (0.87)
89	SP	608 (80.96)	BJP	102 (13.58)	506 (67.38)	BSP	16 (2.13)	25 (3.33)
90	SP	358 (43.66)	BJP	319 (38.9)	39 (4.76)	BSP	101 (12.32)	42 (5.12)
91	SP	261 (74.57)	BJP	74 (21.14)	187 (53.43)	BSP	4 (1.14)	11 (3.14)
92	BSP	179 (34.69)	BJP	162 (31.4)	17 (3.29)	SP	156 (30.23)	19 (3.68)
93	SP	241 (36.19)	BJP	211 (31.68)	30 (4.51)	BSP	180 (27.03)	34 (5.11)
94	BJP	325 (60.63)	BSP	134 (25)	191 (35.63)	SP	49 (9.14)	28 (5.22)
95	SP	242 (76.58)	BSP	45 (14.24)	197 (62.34)	BJP	23 (7.28)	6 (1.9)
96	BJP	190 (45.89)	SP	162 (39.13)	28 (6.76)	BSP	54 (13.04)	8 (1.93)
97	BJP	388 (77.6)	BSP	57 (11.4)	331 (66.2)	SP	22 (4.4)	33 (6.6)
98	BJP	328 (85.19)	SP	38 (9.87)	290 (75.32)	BSP	8 (2.08)	11 (2.86)
99	SP	172 (42.16)	BJP	168 (41.18)	4 (0.98)	BSP	51 (12.5)	17 (4.17)
100	BJP	209 (39.29)	SP	174 (32.71)	35 (6.58)	BSP	126 (23.68)	23 (4.32)
101	SP	335 (47.05)	BJP	300 (42.13)	35 (4.92)	BSP	54 (7.58)	23 (3.23)
102	SP	297 (55)	BSP	144 (26.67)	153 (28.33)	BJP	87 (16.11)	12 (2.22)
103	BJP	385 (72.1)	SP	135 (25.28)	250 (46.82)	VPI	6 (1.12)	8 (1.5)
104	BJP	220 (60.94)	SP	74 (20.5)	146 (40.44)	BSP	51 (14.13)	16 (4.43)

Contd....

## Socio-Economic Amenities - Rural

### Access to Education Facilities

Particulars	Number of Villages (% of Population)				
	Available	Not Available	If Not Available (Distance of Nearest Facility)		
			A	B	C
Govt. Primary School	299 (93)	53 (7)	35 (4)	2 (0)	0 (0)
Private Primary School	21 (14)	331 (86)	2 (0)	0 (0)	0 (0)
Govt. Middle School	158 (68)	194 (32)	101 (16)	13 (2)	1 (0)
Private Middle School	37 (22)	315 (78)	32 (5)	10 (2)	1 (0)
Govt. Secondary School	11 (8)	341 (92)	72 (17)	51 (9)	5 (1)
Private Secondary School	30 (19)	322 (81)	91 (24)	46 (10)	4 (1)
Govt. Senior Secondary School	6 (5)	346 (95)	62 (15)	62 (13)	12 (2)
Private Senior Secondary School	16 (10)	336 (90)	84 (24)	58 (14)	11 (3)
Govt. Arts and Science Degree College	2 (0)	350 (100)	29 (6)	74 (17)	40 (10)
Private Arts and Science Degree College	6 (4)	346 (96)	50 (15)	44 (15)	37 (13)
Govt. Engineering College	0 (0)	352 (100)	2 (1)	8 (2)	72 (16)
Private Engineering College	7 (5)	345 (95)	42 (15)	84 (23)	81 (23)
Govt. Medicine College	0 (0)	352 (100)	11 (2)	15 (4)	100 (27)
Private Medicine College	2 (1)	350 (99)	14 (4)	46 (12)	110 (32)
Govt. Management Institute	0 (0)	352 (100)	1 (0)	2 (0)	117 (27)
Private Management Institute	11 (3)	341 (97)	24 (6)	44 (10)	69 (27)
Govt. Polytechnic	0 (0)	352 (100)	5 (1)	2 (1)	294 (80)
Private Polytechnic	0 (0)	352 (100)	6 (1)	3 (0)	7 (2)
Govt. Vocational Training School/ITI	1 (1)	351 (99)	13 (4)	22 (9)	251 (66)
Private Vocational Training School/ITI	1 (0)	351 (100)	11 (2)	5 (1)	9 (3)
Govt. Non Formal Training Centre	1 (0)	351 (100)	10 (2)	16 (4)	153 (38)
Private Non Formal Training Centre	0 (0)	352 (100)	13 (3)	2 (1)	9 (4)
Govt. School For Disabled	0 (0)	352 (100)	2 (0)	11 (3)	164 (43)
Private School For Disabled	0 (0)	352 (100)	13 (2)	9 (2)	23 (10)
Government Others	0 (0)	352 (100)	0 (0)	0 (0)	4 (1)
Private Others	2 (0)	350 (100)	11 (2)	0 (0)	1 (0)

Note : Distance A : Less than 5 km; B : Between 5-10 km; C : 10+ km.; Source : Data Analysis is based on 2011 Census.



## DISCLAIMER

The Terms of Use and Disclaimer of Datanet India Private Limited (hereinafter referred to as "Datanet") for use of this analysis report of **Bilhaur Assembly Constituency (Bilhaur Vidhan Sabha)** :-

1. **Assembly Factbook™** is a Registered Trade Mark owned by Datanet.
2. All the maps are sketched and graphical representation only and have not been drawn to the scale and also not to represent the actual geographical area or boundary of the unit.
3. The data for the aforesaid analysis is based on authentic sources and has been culled from the various publications of Census, CSO and NSSO for district and block level data, various central and state government departments, Central & State Elections Commissions and the concerned Returning Officers' releases, Electoral Rolls, Election results and allied publications, internal assessment, surveys, estimates and analysis. Therefore, certain adjustment of data at micro level may have been done to arrive closer to the macro data.
4. Data have been provided on an "As Is" and "As AVAILABLE" basis
5. The colours shown in the maps or diagram and charts of a particular party, alliance or AC are indicative and do not represent them.
6. This publication which includes maps, sheets, graphs and data would be the property under copyright of Datanet only. The user may use these for its internal study, analysis and research purposes. It's public display, re-selling or any commercial uses by the user are not allowed.
7. Datanet has taken due care and caution in compilation and processing of data and allied information, but does not guarantee the accuracy, adequacy or completeness of any information/analysis and will be not responsible for any errors or omissions or for the results obtained from the use of such information/analysis.
8. All the contents for the publication have been culled from various authentic sources and Datanet reasonably believes such sources to be reliable, but does not make any representations, express or implied as to the accuracy or fitness of use of such information. The information or contents of the information/analysis do not constitute advice and should not be relied upon in making (or refraining from making) any decision. Any reliance placed upon the information provided by Datanet is the sole responsibility and strictly at the user's risk.
9. In no event will Datanet be liable for any damages (including, without limitation, damages for loss of business projects, or loss of profits) arising in contract, tort or otherwise from the use of or inability to use any of its contents, or from any action taken (or refrained from being taken) as a result of using the analysis or any of its contents. Datanet its directors, owners, editors, officials, employees, distributor and agents or any associate will not be liable for any errors in the information contained or any consequences arising from the use of the contents of the provided information/analysis.
10. If any provision of these terms and conditions is held invalid or illegal or unenforceable for any reason by any court of competent jurisdiction, such provision shall be severed and the remainder of provisions of the terms and conditions shall continue in full force and effect as if the Term of Use had been executed with the invalid, illegal or unenforceable provision eliminated.
11. If there are any discrepancies in the information provided, please bring it to attention of Datanet for suitable rectification measures.

**Buy Online This Complete Book At**  
**Datanet India eBooks Store**

[www.indiastatpublications.com](http://www.indiastatpublications.com)

or go directly at

[http://www.indiastatpublications.com/  
Assembly\\_factbook/Uttar Pradesh/Misrikh/ Bilhaur](http://www.indiastatpublications.com/Assembly_factbook/Uttar%20Pradesh/Misrikh/Bilhaur)

 **india**stat**elections**

ISBN : 978-93-5905-936-5



9 789359 059365