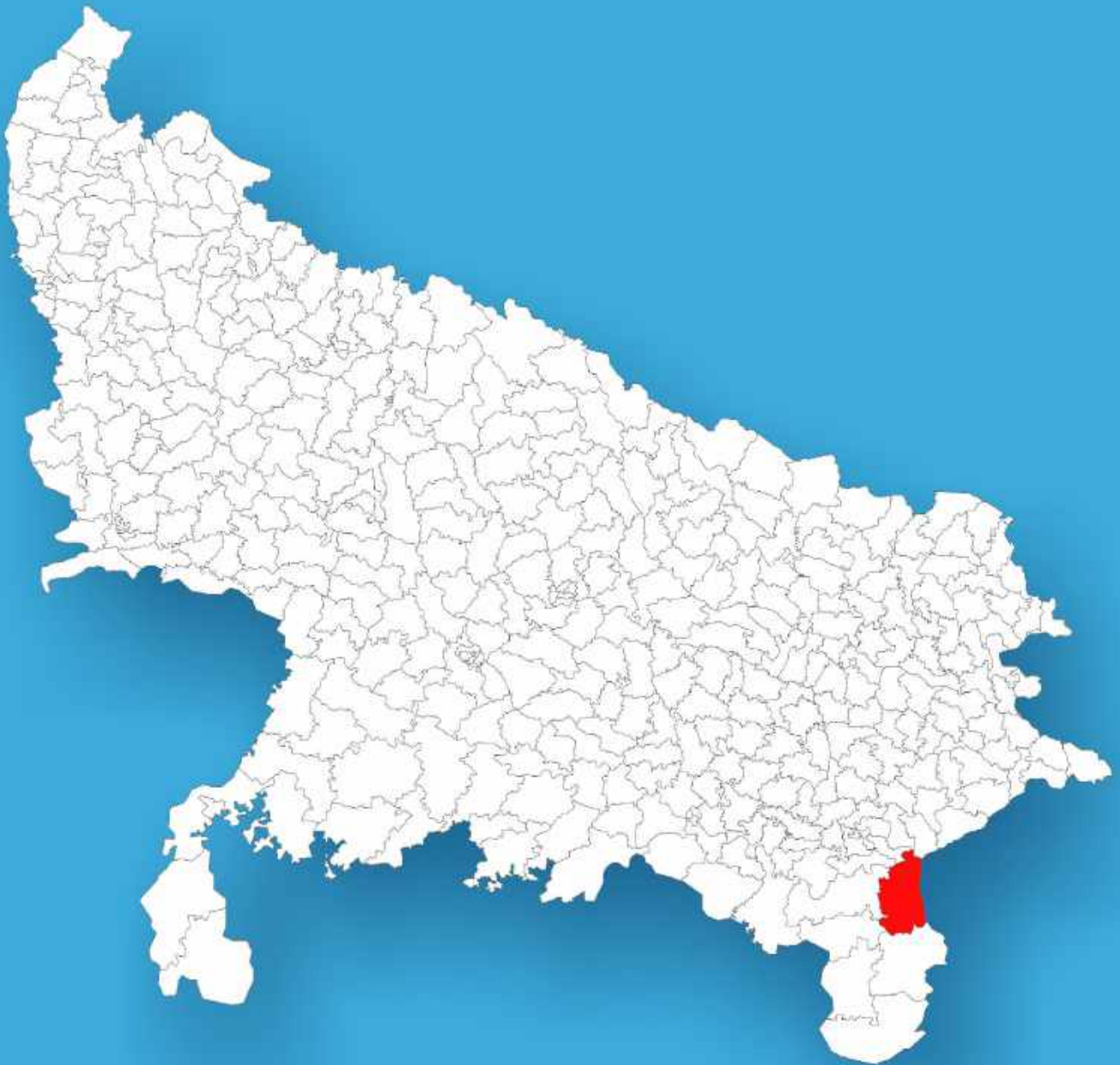




Uttar Pradesh

Assembly Factbook™

Chakia Assembly Constituency



Key Electoral Data of Chakia
Assembly Constituency (Vidhan Sabha)

Uttar Pradesh
Assembly FactbookTM
Chakia Assembly Constituency



Chakia Vidhan Sabha

Editor & Director

Dr. R.K. Thukral

Research Editor

Dr. Shafeeq Rahman

**Compiled, Researched and Published by
Datanet India Pvt. Ltd.**

D-100, 1st Floor,

Okhla Industrial Area, Phase-I,

New Delhi- 110020.

Ph.: 91-11- 43580781-84

Email : support@indiastatpublications.com

Website : www.indiastatelections.com

Online Book Store :

www.indiastatpublications.com

Report No. : AFB/UP-383-0125

ISBN : 978-93-5905-617-3

First Edition : January, 2018

Eighth Updated Edition : January, 2025

Price : Rs.11500/-

US\$ 310

© Datanet India Pvt. Ltd.

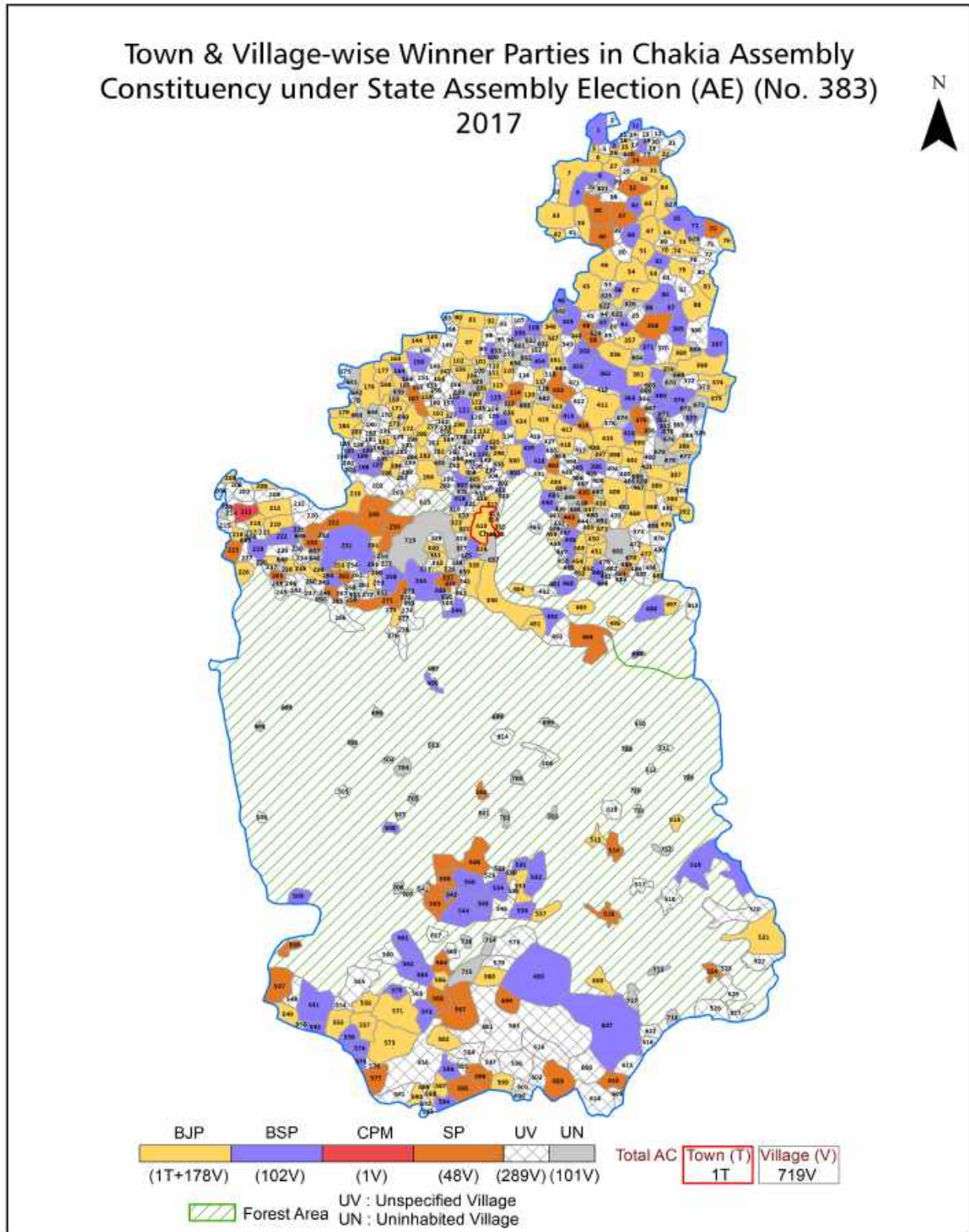
All rights reserved. No part of this book may be reproduced, stored in a retrieval system or transmitted in any form or by any means, mechanical photocopying, photographing, scanning, recording or otherwise without the prior written permission of the publisher. Please refer to Disclaimer at page no. 368 for the use of this publication.

Printed in India

Contents

| No. | Particulars | Page No. |
|-----|---|----------|
| | Introduction | |
| 1 | Assembly Constituency - (Vidhan Sabha) at a Glance Features of Assembly as per Delimitation Commission of India (2008) | 1-2 |
| | Location and Political Maps | |
| 2 | Location Map Boundaries of Assembly Constituency - (Vidhan Sabha) in District Boundaries of Assembly Constituency under Parliamentary Constituency - (Lok Sabha) Town & Village-wise Winner Parties-2024, 2022, 2019, 2017, 2014, 2012 and 2009 | 3-11 |
| | Administrative Setup (2011) | |
| 3 | District Sub-district Towns Villages Inhabited Villages Uninhabited Villages Village Panchayat Intermediate Panchayat | 12-43 |
| | Demographics (2011) | |
| 4 | Population Households Rural/Urban Population Towns and Villages by Population Size Sex Ratio (Total & 0-6 Years) Religious Population Social Population Literacy Rate | 44-45 |
| | Electoral Features | |
| 5 | Important Dates of Last Elections Held Electors by Gender Service Electors Voters Voters Turnout Polling Stations & Average Number of Electors per Polling Station Electors by Age Group Present Elected Representatives | 46-51 |
| | Historical Summary Election Results | |
| 6 | Vote Share of Major Parties Winning Margin (Number & Percentage) Polarity of Parties Summary Result of Assembly Segment of Parliamentary Election 2024, 2019, 2014, 2009, 2004 and 1999 Summary Result of Assembly Elections 2022, 2017, 2012, 2007, 2002, 1996, 1993, 1991, 1989, 1985, 1980, 1977, 1974, 1969, 1967, 1962 and 1952 | 52-77 |
| | Polling Station Level Election Results | |
| 7 | Name and Number of Polling Station 2024, 2022, 2019, 2017, 2014, 2012 and 2009 Polling Station-wise Electors, Voters & Voters Turnout 2024, 2022, 2019, 2017, 2014, 2012 and 2009 Polling Station wise Elections Results 2024, 2022, 2019, 2017, 2014, 2012 and 2009 | 78-320 |
| | Panchayat and Local Bodies Election Results | |
| 8 | Panchayat Result 2015 Urban Local Bodies Result 2012 | 321-346 |
| | Share of Assembly Constituency | |
| 9 | Share of Assembly Constituency - (Vidhan Sabha) in State, District and Parliamentary Constituency - (Lok Sabha) | 347 |
| | Socio-Economic Amenities (2011) | |
| 10 | Access to Administrative Units Agricultural, Manufacturing and Industrial Commodities Demographic Indicators Education Health & Manpower Drinking Water Supply Sanitation Entertainment and Recreations Infrastructure Power Food Allocation Distribution and Marketing of Agriculture Commodities Infrastructure Transport and Road Infrastructure Communication Banking and Financial Services Land Use Irrigation Source | 349-363 |
| 11 | Abbreviation & Sources | 364-367 |
| 12 | Disclaimer | 368 |

Location & Political Map



Administrative Setup

List of Village Panchayat & Intermediate Panchayat (Block) Name - 2011

| Village Name | Village Panchayat Name | Intermediate Panchayat Name |
|-------------------|------------------------|-----------------------------|
| Akorhwa | Akodawa | Chakia |
| Akorhwa | Akorva | Chakia |
| Alahadadpur | Maidhi | Chandauli |
| Alahi | Ailahi | Chandauli |
| Alipur | Annipur | Chakia |
| Alipur Bhagrha | Alipur Bhagara | Chakia |
| Amaon | Amaw | Shahabganj |
| Amara | Lathiya Kala | Chakia |
| Amara | Amra | Chakia |
| Amarasipur | Amarsipur | Shahabganj |
| Amauli | Viyasad | Chakia |
| Amaus | Silautapur | Chandauli |
| Ambar | Hadiya | Chakia |
| Amdhha Charanpur | Golabad | Naugarh |
| Amritpur | Amritpur | Naugarh |
| Arari | Arari | Shahabganj |
| Arazi Khurd | Malhar | Shahabganj |
| Arazi Krishnarpan | - | Shahabganj |
| Arjikalani | Isapur | Shahabganj |
| Ataysat Ganj | Atapasganj | Shahabganj |
| Atrawa | Shamsherpur | Naugarh |
| Audhari | Audari | Chakia |
| Aurahi | Shamsherpur | Naugarh |
| Aurwatand | Devarikala | Naugarh |
| Babhanauli | Dahiya | Chakia |
| Badh Bhoka | Shikarganj | Chakia |
| Bagahi | Bhagwanpur | Chandauli |
| Bagahi | Viyasad | Chakia |
| Baghapur | Badhapur | Chakia |

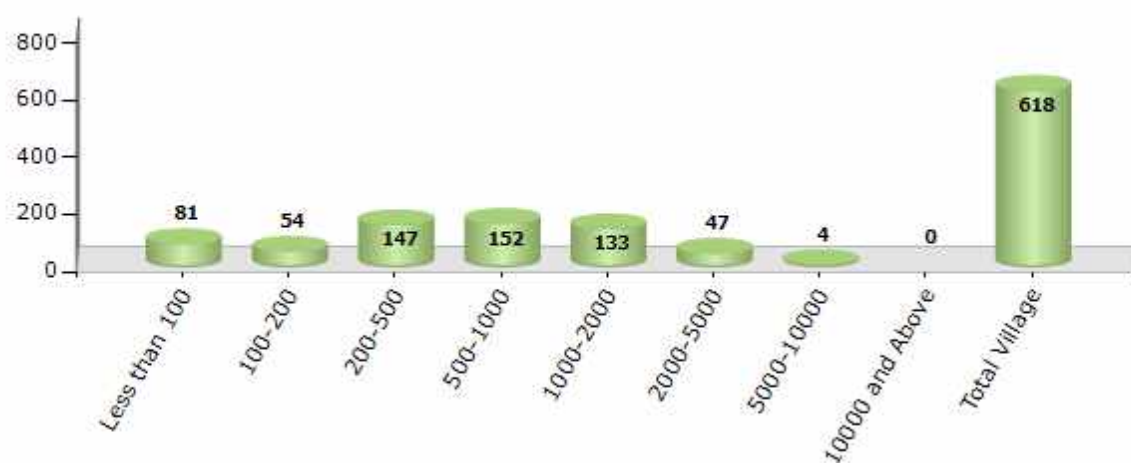
Contd....

Demographics

Number of Villages by Population Size - 2011

| Less than 100 | 100-200 | 200-500 | 500-1000 | 1000-2000 | 2000-5000 | 5000-10000 | 10000 and Above | Total Village |
|---------------|---------|---------|----------|-----------|-----------|------------|-----------------|---------------|
| 81 | 54 | 147 | 152 | 133 | 47 | 4 | 0 | 618 |

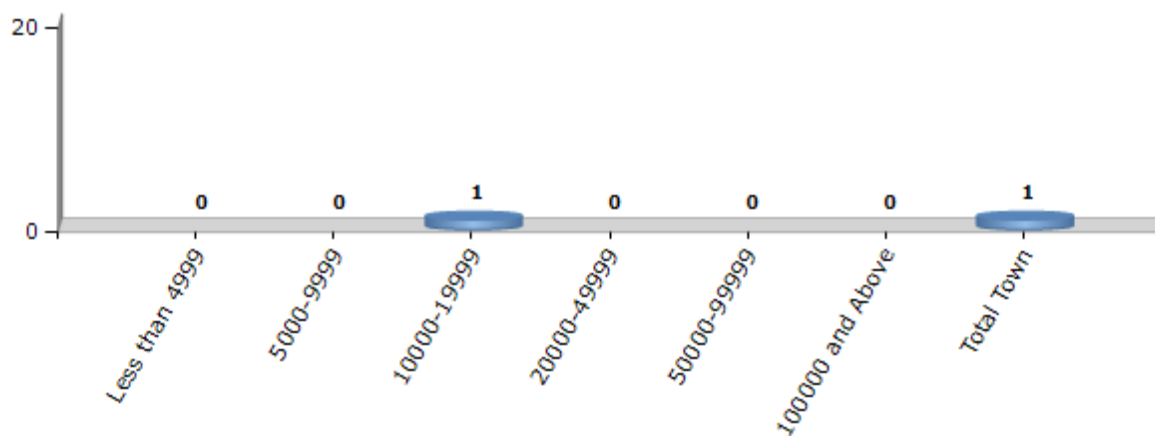
Number of Villages by Population Size - 2011



Number of Towns by Population Size - 2011

| Less than 4999 | 5000-9999 | 10000-19999 | 20000-49999 | 50000-99999 | 100000 and Above | Total Town |
|----------------|-----------|-------------|-------------|-------------|------------------|------------|
| 0 | 0 | 1 | 0 | 0 | 0 | 1 |

Number of Towns by Population Size - 2011

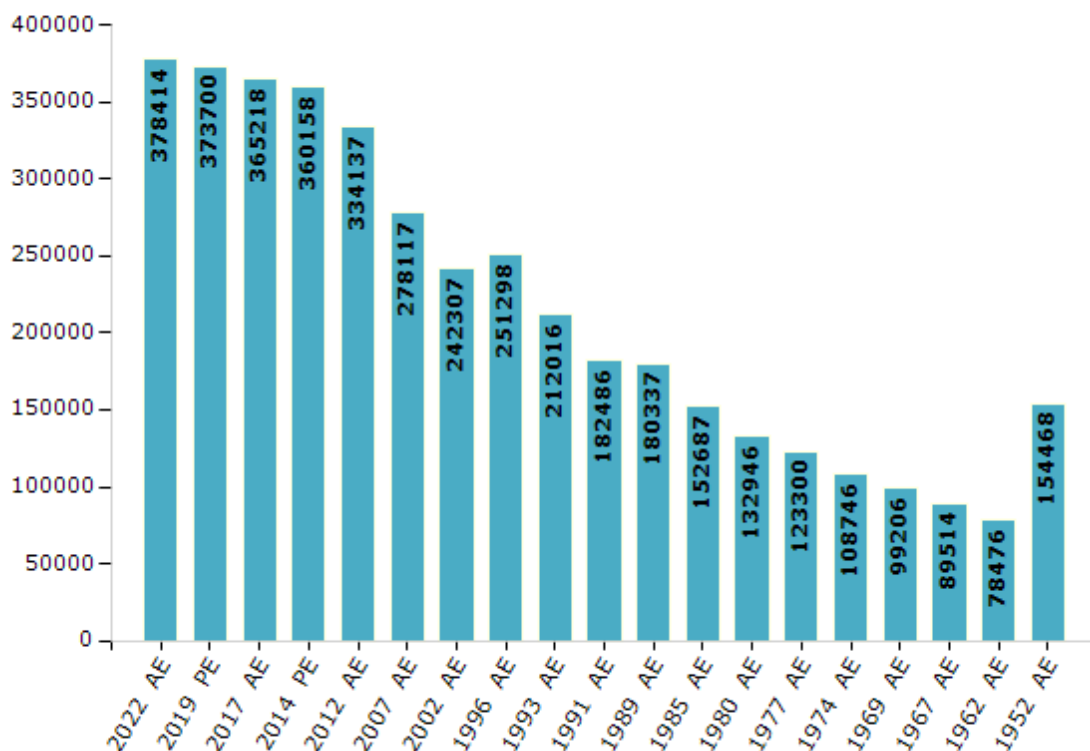


Electoral Features

Electors by Male & Female

| Year | Male | Female | Others | Total | Year | Male | Female | Others | Total |
|---------|--------|--------|--------|--------|---------|--------|--------|--------|--------|
| 2022 AE | 201099 | 177313 | 2 | 378414 | 1991 AE | 100380 | 82106 | - | 182486 |
| 2019 PE | 200391 | 173301 | 8 | 373700 | 1989 AE | 99092 | 81245 | - | 180337 |
| 2017 AE | 195666 | 169548 | 4 | 365218 | 1985 AE | 82644 | 70043 | - | 152687 |
| 2014 PE | 194624 | 165522 | 12 | 360158 | 1980 AE | 70803 | 62143 | - | 132946 |
| 2012 AE | 180918 | 153209 | 10 | 334137 | 1977 AE | 63262 | 60038 | - | 123300 |
| 2009 PE | - | - | - | - | 1974 AE | 55486 | 53260 | - | 108746 |
| 2007 AE | 148077 | 130040 | - | 278117 | 1969 AE | 56289 | 42917 | - | 99206 |
| 2004 PE | - | - | - | - | 1967 AE | - | - | - | 89514 |
| 2002 AE | 130852 | 111455 | - | 242307 | 1962 AE | - | - | - | 78476 |
| 1999 PE | - | - | - | - | 1957 AE | - | - | - | - |
| 1996 AE | 134580 | 116718 | - | 251298 | 1952 AE | - | - | - | 154468 |
| 1993 AE | 116620 | 95396 | - | 212016 | | | | | |

Number of Electors



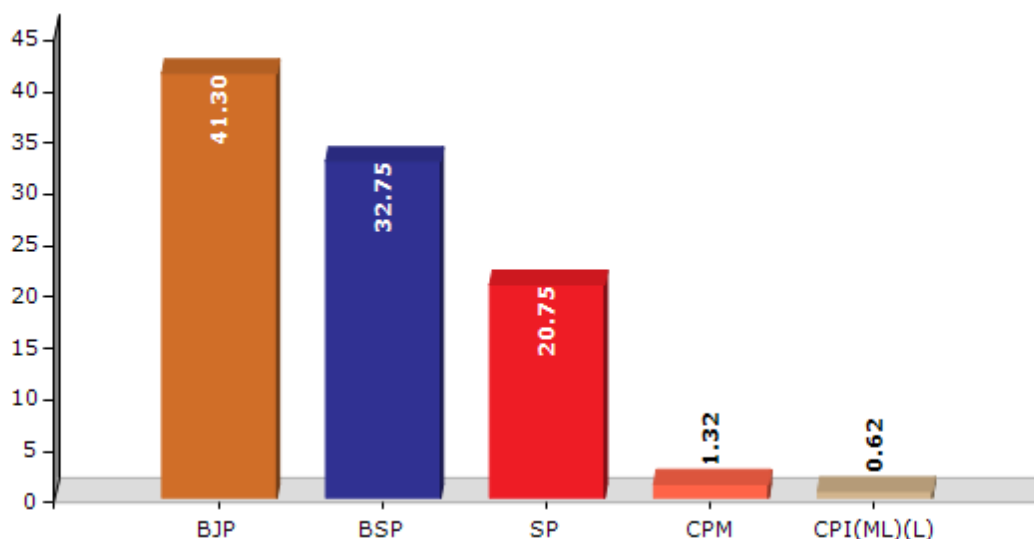
Note : AE : Assembly Election, PE : Assembly Segment of Parliamentary Election

Historical Summary Election Results

Summary Result of Assembly Election - 2017

| Candidate Name | Party | Votes | Votes % |
|------------------------|------------|-------|---------|
| Sharada Prasad | BJP | 96890 | 41.3 |
| Jitendra Kumar | BSP | 76827 | 32.75 |
| Poonam | SP | 48687 | 20.75 |
| Sriprasad | CPM | 3098 | 1.32 |
| Anil Alias Anil Paswan | CPI(ML)(L) | 1447 | 0.62 |
| Dharmendra | IND | 1423 | 0.61 |
| Ramchandra | JANADIP | 900 | 0.38 |
| Ramdhawal | PMSP | 847 | 0.36 |
| Pardeshi | BHAKALP | 723 | 0.31 |
| Radheshyam | LEP | 583 | 0.25 |
| | NOTA | 3162 | 1.35 |

Votes Percentage of Top Parties - 2017



Polling Station Level Election Results

Number and Name of Polling Stations (PS) (2022)

| Number of Polling Stations | Name of Polling Stations | Number of Polling Stations | Name of Polling Stations |
|----------------------------|--------------------------------------|----------------------------|--------------------------------------|
| 1 | P.V. Chhitto | 22 | Composite V. Negura Room No. -2 |
| 2 | Composite V.Majhwar Khas Room No.-1 | 23 | Composite V. Negura Room No. -3 |
| 3 | Composite V.Majhwar Khas Room No.-2 | 24 | P.V. Masauni Room No. -1 |
| 4 | P.V. Footia Room No.-1 | 25 | P.V. Masauni Room No-2 |
| 5 | P.V. Footia Room No.-2 | 26 | Composite V. Patua Room No. 1 |
| 6 | Composite V. Narsinghpur Khurd | 27 | Composite V. Patua Room No. 3 |
| 7 | P.V. Madhopur | 28 | Composite V. Patua Room No. 2 |
| 8 | P.V. Leelapur | 29 | Composite V. Patua Room No. 4 |
| 9 | P.V. Jairampur | 30 | Composite V. Hathiyani Room No. -1 |
| 10 | P.V. Bhagwanpur Room No. -1 | 31 | Composite V. Hathiyani Room No. -2 |
| 11 | P.V. Bhagwanpur Room No. -2 | 32 | Composite V. Hathiyani Room No. -3 |
| 12 | J.H. School Shavaiyapattidari | 33 | P.V. Mustafapur Room No. -1 |
| 13 | Composite V. Machiyakala Room No. -1 | 34 | P.V. Mustafapur Room No. -2 |
| 14 | Composite V. Machiyakala Room No. -2 | 35 | P.V. Pratappur Room No. 1 |
| 15 | P.V. Darveshpur | 36 | P.V. Pratappur Room No. 2 |
| 16 | P.V. Daudpur | 37 | J.H. School Fatepur Kalan Room No. 1 |
| 17 | Composite V. Sultanpur | 38 | J.H. School Fatepur Kalan Room No. 2 |
| 18 | P.V. Wajidpur | 39 | P.V. Narayanpur |
| 19 | P.V. Navahi Room No-1 | 40 | Composite V. Vijaypur |
| 20 | P.V. Navahi Room No-2 | 41 | P.V. Aurea No. 1 |
| 21 | Composite V. Negura Room No. -1 | 42 | P.V. Aurea No. 2 |

Contd....

Polling Station Level Election Results

Polling Station-wise Votes Secured by Overall Top Five Parties in Chakia Assembly in Assembly Election (AE) under Robertsganj Parliamentary Constituency in Uttar Pradesh (2022)

| Number of Polling Station | Winner - Kailash (BJP) | Runner-up - Jitendra Kumar (SP) | 3rd - Vikas Azad (BSP) | 4th - Subash Sonakar (JANADIP) | 5th - Jainath (CPI(M)) | NOTA | Other | Total Votes Secured |
|---------------------------|------------------------|---------------------------------|------------------------|--------------------------------|------------------------|------|-------|---------------------|
| 36 | 65 | 368 | 76 | 0 | 6 | 0 | 7 | 522 |
| 37 | 149 | 297 | 1 | 44 | 3 | 2 | 4 | 500 |
| 38 | 46 | 320 | 100 | 25 | 0 | 0 | 2 | 493 |
| 39 | 166 | 347 | 275 | 4 | 1 | 1 | 16 | 810 |
| 40 | 464 | 202 | 14 | 2 | 8 | 11 | 9 | 710 |
| 41 | 222 | 55 | 156 | 2 | 3 | 4 | 2 | 444 |
| 42 | 181 | 132 | 93 | 5 | 4 | 6 | 14 | 435 |
| 43 | 159 | 388 | 81 | 63 | 7 | 3 | 17 | 718 |
| 44 | 208 | 128 | 118 | 52 | 2 | 3 | 7 | 518 |
| 45 | 240 | 263 | 194 | 2 | 4 | 8 | 20 | 731 |
| 46 | 351 | 86 | 18 | 0 | 2 | 6 | 7 | 470 |
| 47 | 461 | 62 | 189 | 4 | 2 | 10 | 17 | 745 |
| 48 | 146 | 58 | 78 | 10 | 4 | 7 | 3 | 306 |
| 49 | 185 | 75 | 101 | 0 | 1 | 2 | 9 | 373 |
| 50 | 239 | 32 | 212 | 0 | 2 | 2 | 1 | 488 |
| 51 | 238 | 59 | 179 | 11 | 2 | 6 | 19 | 514 |
| 52 | 184 | 128 | 6 | 12 | 2 | 1 | 5 | 338 |
| 53 | 237 | 150 | 137 | 0 | 6 | 5 | 7 | 542 |
| 54 | 445 | 123 | 3 | 4 | 3 | 8 | 23 | 609 |
| 55 | 172 | 46 | 280 | 1 | 0 | 8 | 16 | 523 |
| 56 | 298 | 303 | 127 | 9 | 3 | 4 | 9 | 753 |
| 57 | 319 | 257 | 13 | 26 | 7 | 1 | 9 | 632 |
| 58 | 69 | 133 | 354 | 79 | 3 | 11 | 10 | 659 |
| 59 | 343 | 182 | 83 | 3 | 1 | 3 | 24 | 639 |
| 60 | 249 | 93 | 310 | 10 | 6 | 15 | 38 | 721 |
| 61 | 287 | 80 | 5 | 63 | 4 | 4 | 6 | 449 |
| 62 | 193 | 240 | 3 | 44 | 1 | 5 | 5 | 491 |
| 63 | 282 | 157 | 3 | 1 | 2 | 3 | 7 | 455 |
| 64 | 366 | 126 | 1 | 1 | 4 | 4 | 6 | 508 |
| 65 | 197 | 82 | 328 | 0 | 1 | 8 | 14 | 630 |
| 66 | 8 | 22 | 474 | 2 | 0 | 15 | 13 | 534 |
| 67 | 139 | 111 | 2 | 60 | 1 | 1 | 1 | 315 |
| 68 | 351 | 200 | 7 | 11 | 3 | 5 | 6 | 583 |
| 69 | 323 | 136 | 179 | 6 | 4 | 5 | 8 | 661 |
| 70 | 113 | 84 | 324 | 2 | 5 | 0 | 10 | 538 |

Contd....

Polling Station Level Election Results

Winner, Runner-up and 3rd Party Position & Winning Margin According to Polling Stations in Chakia Assembly in Assembly Election (AE) under Robertsganj Parliamentary Constituency in Uttar Pradesh (2022)

| Polling Station Number | Winner Party | Winner Votes (%) | Runner-up Party | Runner-up Votes (%) | Winning Margin Votes (%) | Third Party | Third Party Votes (%) | Other Votes (%) |
|------------------------|--------------|------------------|-----------------|---------------------|--------------------------|-------------|-----------------------|-----------------|
| 71 | BSP | 223 (30.97) | SP | 190 (26.39) | 33 (4.58) | BJP | 178 (24.72) | 129 (17.92) |
| 72 | BJP | 201 (49.75) | SP | 116 (28.71) | 85 (21.04) | JANADIP | 51 (12.62) | 36 (8.91) |
| 73 | BSP | 214 (49.77) | BJP | 109 (25.35) | 105 (24.42) | SP | 59 (13.72) | 48 (11.16) |
| 74 | BJP | 176 (77.53) | SP | 44 (19.38) | 132 (58.15) | BSP | 3 (1.32) | 4 (1.76) |
| 75 | SP | 447 (79.26) | BJP | 57 (10.11) | 390 (69.15) | JANADIP | 28 (4.96) | 32 (5.67) |
| 76 | SP | 189 (41.63) | BSP | 171 (37.67) | 18 (3.96) | BJP | 61 (13.44) | 33 (7.27) |
| 77 | SP | 507 (77.88) | BJP | 64 (9.83) | 443 (68.05) | BSP | 44 (6.76) | 36 (5.53) |
| 78 | BJP | 369 (56.77) | SP | 247 (38) | 122 (18.77) | BSP | 12 (1.85) | 22 (3.38) |
| 79 | BSP | 192 (60.57) | BJP | 67 (21.14) | 125 (39.43) | SP | 54 (17.03) | 4 (1.26) |
| 80 | BJP | 226 (67.66) | BSP | 79 (23.65) | 147 (44.01) | SP | 15 (4.49) | 14 (4.19) |
| 81 | BSP | 238 (50.32) | BJP | 109 (23.04) | 129 (27.28) | SP | 95 (20.08) | 31 (6.55) |
| 82 | BJP | 180 (48.91) | SP | 168 (45.65) | 12 (3.26) | INC | 6 (1.63) | 14 (3.8) |
| 83 | BSP | 286 (64.85) | BJP | 74 (16.78) | 212 (48.07) | SP | 63 (14.29) | 18 (4.08) |
| 84 | BJP | 470 (73.78) | SP | 145 (22.76) | 325 (51.02) | BSP | 4 (0.63) | 18 (2.83) |
| 85 | SP | 316 (53.83) | BSP | 208 (35.43) | 108 (18.4) | BJP | 36 (6.13) | 27 (4.6) |
| 86 | SP | 278 (60.17) | BJP | 164 (35.5) | 114 (24.67) | CPI(M) | 6 (1.3) | 14 (3.03) |
| 87 | BSP | 189 (43.15) | BJP | 168 (38.36) | 21 (4.79) | SP | 56 (12.79) | 25 (5.71) |
| 88 | BJP | 177 (55.31) | SP | 123 (38.44) | 54 (16.87) | BSP | 4 (1.25) | 16 (5) |
| 89 | SP | 328 (64.19) | BJP | 139 (27.2) | 189 (36.99) | BSP | 25 (4.89) | 19 (3.72) |
| 90 | SP | 384 (84.4) | BJP | 37 (8.13) | 347 (76.27) | JANADIP | 14 (3.08) | 20 (4.4) |
| 91 | BSP | 206 (37.05) | BJP | 166 (29.86) | 40 (7.19) | SP | 146 (26.26) | 38 (6.83) |
| 92 | BJP | 201 (50.5) | SP | 148 (37.19) | 53 (13.31) | BSP | 23 (5.78) | 26 (6.53) |
| 93 | BJP | 343 (52.85) | BSP | 146 (22.5) | 197 (30.35) | SP | 127 (19.57) | 33 (5.08) |
| 94 | BJP | 304 (69.89) | SP | 77 (17.7) | 227 (52.19) | BSP | 30 (6.9) | 24 (5.52) |
| 95 | BSP | 187 (42.79) | BJP | 160 (36.61) | 27 (6.18) | SP | 66 (15.1) | 24 (5.49) |
| 96 | BJP | 313 (50.24) | SP | 244 (39.17) | 69 (11.07) | JANADIP | 52 (8.35) | 14 (2.25) |
| 97 | BSP | 183 (35.26) | BJP | 176 (33.91) | 7 (1.35) | SP | 134 (25.82) | 26 (5.01) |
| 98 | BSP | 252 (33.6) | SP | 212 (28.27) | 40 (5.33) | BJP | 198 (26.4) | 88 (11.73) |
| 99 | BJP | 257 (39.84) | SP | 173 (26.82) | 84 (13.02) | BSP | 172 (26.67) | 43 (6.67) |
| 100 | BJP | 378 (70.13) | SP | 124 (23.01) | 254 (47.12) | BSP | 12 (2.23) | 25 (4.64) |
| 101 | BJP | 214 (44.58) | SP | 139 (28.96) | 75 (15.62) | BSP | 102 (21.25) | 25 (5.21) |
| 102 | SP | 265 (55.79) | BJP | 193 (40.63) | 72 (15.16) | CPI(M) | 4 (0.84) | 13 (2.74) |
| 103 | BJP | 221 (54.57) | SP | 166 (40.99) | 55 (13.58) | CPI(M) | 5 (1.23) | 13 (3.21) |
| 104 | BJP | 350 (69.31) | SP | 130 (25.74) | 220 (43.57) | INC | 6 (1.19) | 19 (3.76) |
| 105 | BJP | 198 (47.26) | SP | 145 (34.61) | 53 (12.65) | BSP | 56 (13.37) | 20 (4.77) |

Contd....

Socio-Economic Amenities - Rural

Access to Education Facilities

| Particulars | Number of Villages (% of Population) | | | | |
|---|--------------------------------------|---------------|--|----------|----------|
| | Available | Not Available | If Not Available (Distance of Nearest Facility) | | |
| | | | A | B | C |
| Govt. Primary School | 318 (74) | 300 (26) | 183 (11) | 25 (2) | 7 (1) |
| Private Primary School | 39 (17) | 579 (83) | 5 (0) | 1 (0) | 0 (0) |
| Govt. Middle School | 157 (44) | 461 (56) | 276 (31) | 57 (6) | 19 (2) |
| Private Middle School | 22 (10) | 596 (90) | 13 (1) | 1 (0) | 0 (0) |
| Govt. Secondary School | 25 (8) | 593 (92) | 235 (36) | 133 (21) | 85 (11) |
| Private Secondary School | 12 (8) | 606 (92) | 34 (5) | 5 (0) | 5 (1) |
| Govt. Senior Secondary School | 14 (5) | 604 (95) | 202 (31) | 148 (21) | 122 (18) |
| Private Senior Secondary School | 10 (7) | 608 (93) | 26 (4) | 3 (0) | 2 (0) |
| Govt. Arts and Science Degree College | 5 (1) | 613 (99) | 57 (10) | 106 (17) | 273 (43) |
| Private Arts and Science Degree College | 1 (0) | 617 (100) | 6 (1) | 1 (0) | 4 (1) |
| Govt. Engineering College | 0 (0) | 618 (100) | 14 (3) | 25 (4) | 339 (55) |
| Private Engineering College | 1 (0) | 617 (100) | 2 (0) | 0 (0) | 1 (0) |
| Govt. Medicine College | 0 (0) | 618 (100) | 28 (5) | 35 (7) | 313 (52) |
| Private Medicine College | 0 (0) | 618 (100) | 0 (0) | 0 (0) | 0 (0) |
| Govt. Management Institute | 0 (0) | 618 (100) | 11 (3) | 26 (5) | 302 (48) |
| Private Management Institute | 0 (0) | 618 (100) | 4 (0) | 0 (0) | 4 (0) |
| Govt. Polytechnic | 1 (0) | 617 (100) | 17 (4) | 30 (5) | 416 (67) |
| Private Polytechnic | 1 (0) | 617 (100) | 3 (0) | 0 (0) | 1 (1) |
| Govt. Vocational Training School/ITI | 1 (0) | 617 (100) | 13 (3) | 40 (9) | 326 (51) |
| Private Vocational Training School/ITI | 0 (0) | 618 (100) | 9 (1) | 4 (1) | 10 (2) |
| Govt. Non Formal Training Centre | 4 (1) | 614 (99) | 14 (3) | 40 (5) | 205 (33) |
| Private Non Formal Training Centre | 0 (0) | 618 (100) | 0 (0) | 0 (0) | 4 (1) |
| Govt. School For Disabled | 1 (0) | 617 (100) | 9 (2) | 15 (2) | 164 (25) |
| Private School For Disabled | 0 (0) | 618 (100) | 0 (0) | 0 (0) | 1 (0) |
| Government Others | 1 (0) | 617 (100) | 1 (0) | 1 (0) | 31 (5) |
| Private Others | 0 (0) | 618 (100) | 0 (0) | 0 (0) | 0 (0) |

Note : Distance A : Less than 5 km; B : Between 5-10 km; C : 10+ km.; Source : Data Analysis is based on 2011 Census.

DISCLAIMER

The Terms of Use and Disclaimer of Datanet India Private Limited (hereinafter referred to as "Datanet") for use of this analysis report of **Chakia Assembly Constituency (Chakia Vidhan Sabha)** :-

1. **Assembly Factbook™** is a Registered Trade Mark owned by Datanet.
2. All the maps are sketched and graphical representation only and have not been drawn to the scale and also not to represent the actual geographical area or boundary of the unit.
3. The data for the aforesaid analysis is based on authentic sources and has been culled from the various publications of Census, CSO and NSSO for district and block level data, various central and state government departments, Central & State Elections Commissions and the concerned Returning Officers' releases, Electoral Rolls, Election results and allied publications, internal assessment, surveys, estimates and analysis. Therefore, certain adjustment of data at micro level may have been done to arrive closer to the macro data.
4. Data have been provided on an "As Is" and "As AVAILABLE" basis
5. The colours shown in the maps or diagram and charts of a particular party, alliance or AC are indicative and do not represent them.
6. This publication which includes maps, sheets, graphs and data would be the property under copyright of Datanet only. The user may use these for its internal study, analysis and research purposes. It's public display, re-selling or any commercial uses by the user are not allowed.
7. Datanet has taken due care and caution in compilation and processing of data and allied information, but does not guarantee the accuracy, adequacy or completeness of any information/analysis and will be not responsible for any errors or omissions or for the results obtained from the use of such information/analysis.
8. All the contents for the publication have been culled from various authentic sources and Datanet reasonably believes such sources to be reliable, but does not make any representations, express or implied as to the accuracy or fitness of use of such information. The information or contents of the information/analysis do not constitute advice and should not be relied upon in making (or refraining from making) any decision. Any reliance placed upon the information provided by Datanet is the sole responsibility and strictly at the user's risk.
9. In no event will Datanet be liable for any damages (including, without limitation, damages for loss of business projects, or loss of profits) arising in contract, tort or otherwise from the use of or inability to use any of its contents, or from any action taken (or refrained from being taken) as a result of using the analysis or any of its contents. Datanet its directors, owners, editors, officials, employees, distributor and agents or any associate will not be liable for any errors in the information contained or any consequences arising from the use of the contents of the provided information/analysis.
10. If any provision of these terms and conditions is held invalid or illegal or unenforceable for any reason by any court of competent jurisdiction, such provision shall be severed and the remainder of provisions of the terms and conditions shall continue in full force and effect as if the Term of Use had been executed with the invalid, illegal or unenforceable provision eliminated.
11. If there are any discrepancies in the information provided, please bring it to attention of Datanet for suitable rectification measures.

Buy Online This Complete Book At
Datanet India eBooks Store

www.indiastatpublications.com

or go directly at

[http://www.indiastatpublications.com/
Assembly_factbook/Uttar Pradesh/Robertsganj/ Chakia](http://www.indiastatpublications.com/Assembly_factbook/Uttar%20Pradesh/Robertsganj/Chakia)

 **indiastat**elections

ISBN : 978-93-5905-617-3



9 789359 056173