



Himachal Pradesh

# Assembly Factbook™

Nadaun Assembly Constituency



Key Electoral Data of Nadaun  
Assembly Constituency (Vidhan Sabha)

Himachal Pradesh  
**Assembly Factbook**<sup>TM</sup>  
Nadaun Assembly Constituency



Nadaun Vidhan Sabha

## **Editor & Director**

Dr. R.K. Thukral

## **Research Editor**

Dr. Shafeeq Rahman

## **Compiled, Researched and Published by Datanet India Pvt. Ltd.**

D-100, 1st Floor,

Okhla Industrial Area, Phase-I,

New Delhi- 110020.

Ph.: 91-11- 43580781-84

Email : support@indiastatpublications.com

Website : www.indiastatelections.com

## **Online Book Store :**

www.indiastatpublications.com

**Report No. :** AFB/HP-40-0624

**ISBN :** 978-93-5905-154-3

**First Edition :** January, 2018

**Seventh Updated Edition :** June, 2024

**Price :** Rs.11500/-

US\$ 310

© **Datanet India Pvt. Ltd.**

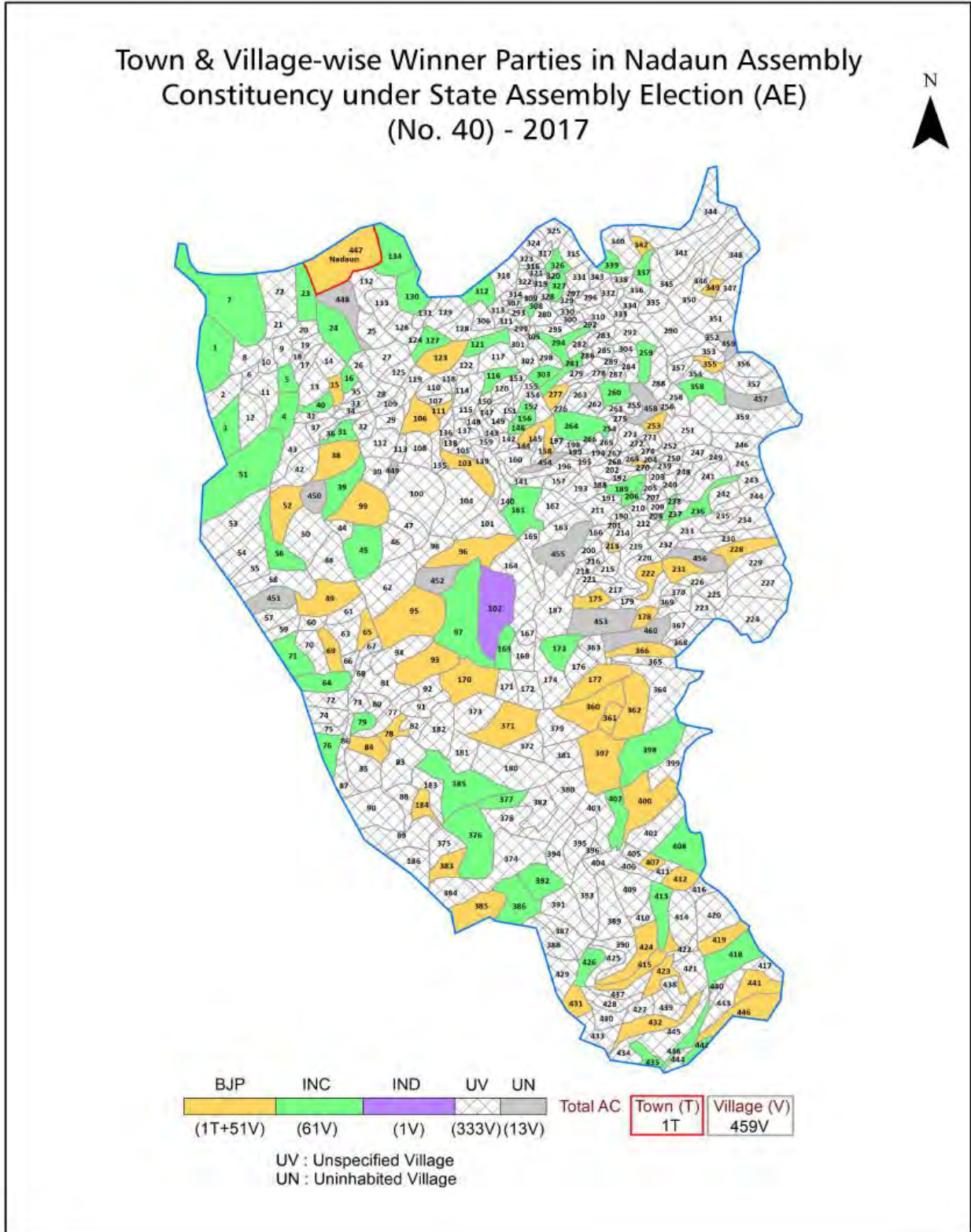
All rights reserved. No part of this book may be reproduced, stored in a retrieval system or transmitted in any form or by any means, mechanical photocopying, photographing, scanning, recording or otherwise without the prior written permission of the publisher. Please refer to Disclaimer at page no. 149 for the use of this publication.

Printed in India

# Contents

No.	Particulars	Page No.
	<b>Introduction</b>	
1	Assembly Constituency - (Vidhan Sabha) at a Glance   Features of Assembly as per Delimitation Commission of India (2008)	1-2
	<b>Location and Political Maps</b>	
2	Location Map   Boundaries of Assembly Constituency - (Vidhan Sabha) in District   Boundaries of Assembly Constituency under Parliamentary Constituency - (Lok Sabha)   Town & Village-wise Winner Parties- 2024, 2022, 2017, 2014, 2012 and 2009	3-11
	<b>Administrative Setup (2011)</b>	
3	District   Sub-district   Towns   Villages   Inhabited Villages   Uninhabited Villages   Village Panchayat   Intermediate Panchayat	12-34
	<b>Demographics (2011)</b>	
4	Population   Households   Rural/Urban Population   Towns and Villages by Population Size   Sex Ratio (Total & 0-6 Years)   Religious Population   Social Population   Literacy Rate	35-36
	<b>Electoral Features</b>	
5	Important Dates of Last Elections Held   Electors by Gender   Service Electors   Voters   Voters Turnout   Polling Stations & Average Number of Electors per Polling Station   Electors by Age Group   Present Elected Representatives	37-42
	<b>Historical Summary Election Results</b>	
6	Vote Share of Major Parties   Winning Margin (Number & Percentage)   Polarity of Parties   Summary Result of Assembly Segment of Parliamentary Elections 2024, 2019, 2014, 2009, 2004 and 1999   Summary Result of Assembly Elections 2022, 2017, 2012, 2007, 2003, 1998, 1993, 1990, 1985, 1982, 1977, 1972 and 1967	43-64
	<b>Polling Station Level Election Results</b>	
7	Name and Number of Polling Station 2024, 2022, 2017, 2014, 2012 and 2009   Polling Station-wise Electors, Voters & Voters Turnout 2024, 2022, 2017, 2014, 2012 and 2009   Polling Station wise Elections Results 2024, 2022, 2017, 2014, 2012 and 2009	65-129
	<b>Share of Assembly Constituency</b>	
8	Share of Assembly Constituency - (Vidhan Sabha) in State, District and Parliamentary Constituency - (Lok Sabha)	130
	<b>Socio-Economic Amenities (2011)</b>	
9	Access to Administrative Units   Agricultural, Manufacturing and Industrial Commodities   Demographic Indicators   Education   Health & Manpower   Drinking Water Supply   Sanitation   Entertainment and Recreations Infrastructure   Power   Food Allocation Distribution and Marketing of Agriculture Commodities Infrastructure   Transport and Road Infrastructure   Communication   Banking and Financial Services   Land Use   Irrigation Source	132-146
10	<b>Abbreviation &amp; Sources</b>	147-148
11	<b>Disclaimer</b>	149

Location & Political Map



## Administrative Setup

### List of Village Panchayat & Intermediate Panchayat (Block) Name - 2011

Village Name	Village Panchayat Name	Intermediate Panchayat Name
Adarshnagar (24/17)	Putriyal	Nadaun
Agthan (36/14)	Sareri	Nadaun
Ambi (20/1)	Lahar Kotlu	Nadaun
Amlahru (24/14)	Chouru	Nadaun
Amlehar (18/5)	Amlehar	Nadaun
Amlehru (23/1)	Kandrola Plassi	Nadaun
Amroa (17/10)	Dhaneta	Nadaun
Amroh (36/30)	Sareri	Nadaun
Amrota (22/19)	Bara	Nadaun
Andara (22/2)	Bara	Nadaun
Ansarah (17/33)	Kitpal	Nadaun
Badaran (17/34)	Badaran	Nadaun
Badaran (36/25)	Galore Khas	Nadaun
Badehtar (23/19)	Chouru	Nadaun
Badhera (17/14)	Manjheli	Nadaun
Badhera (18/8)	Gawal-Pather	Nadaun
Badhera (26/19)	Mansai	Nadaun
Badhyar (23/15)	Saproh	Nadaun
Bag (17/13)	Bara	Nadaun
Bagg (22/7)	Dhaneta	Nadaun
Bahal (20/17)	Sanahi	Nadaun
Bahal (28/2)	Nara	Nadaun
Bahl (24/1)	Lahar Kotlu	Nadaun
Bahl (36/4)	Sareri	Nadaun
Bakhrun (17/18)	Bhadroon	Nadaun
Balaher (25/34)	Naryah	Nadaun
Balh Patialan (17/43)	Batran	Nadaun
Balloh (36/16)	Paniali	Nadaun
Baloh (17/32)	Hathol	Nadaun

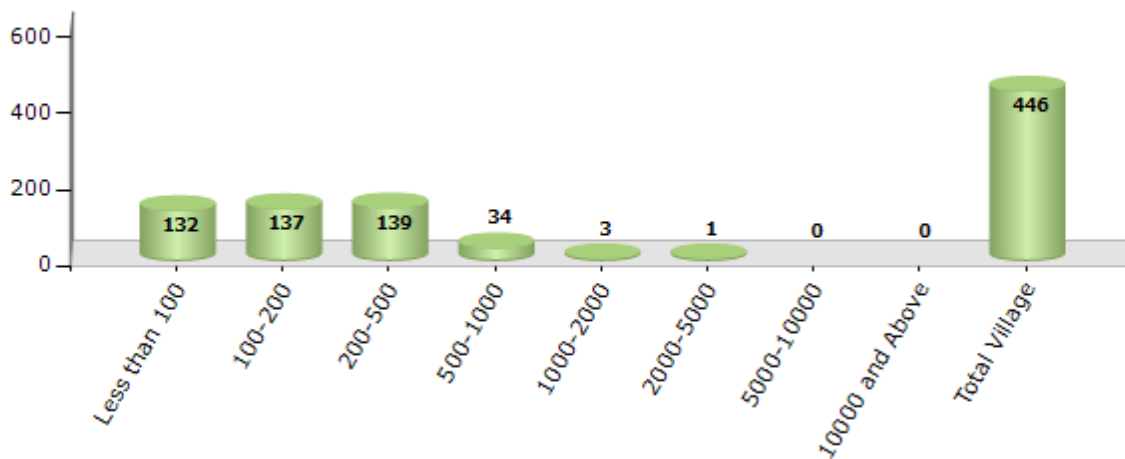
Contd....

## Demographics

### Number of Villages by Population Size - 2011

Less than 100	100-200	200-500	500-1000	1000-2000	2000-5000	5000-10000	10000 and Above	Total Village
132	137	139	34	3	1	0	0	446

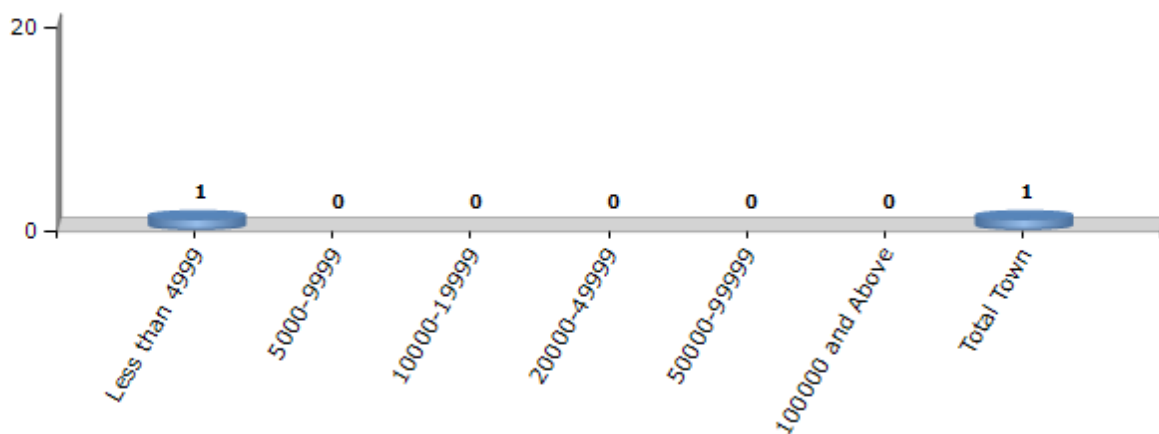
Number of Villages by Population Size - 2011



### Number of Towns by Population Size - 2011

Less than 4999	5000-9999	10000-19999	20000-49999	50000-99999	100000 and Above	Total Town
1	0	0	0	0	0	1

Number of Towns by Population Size - 2011

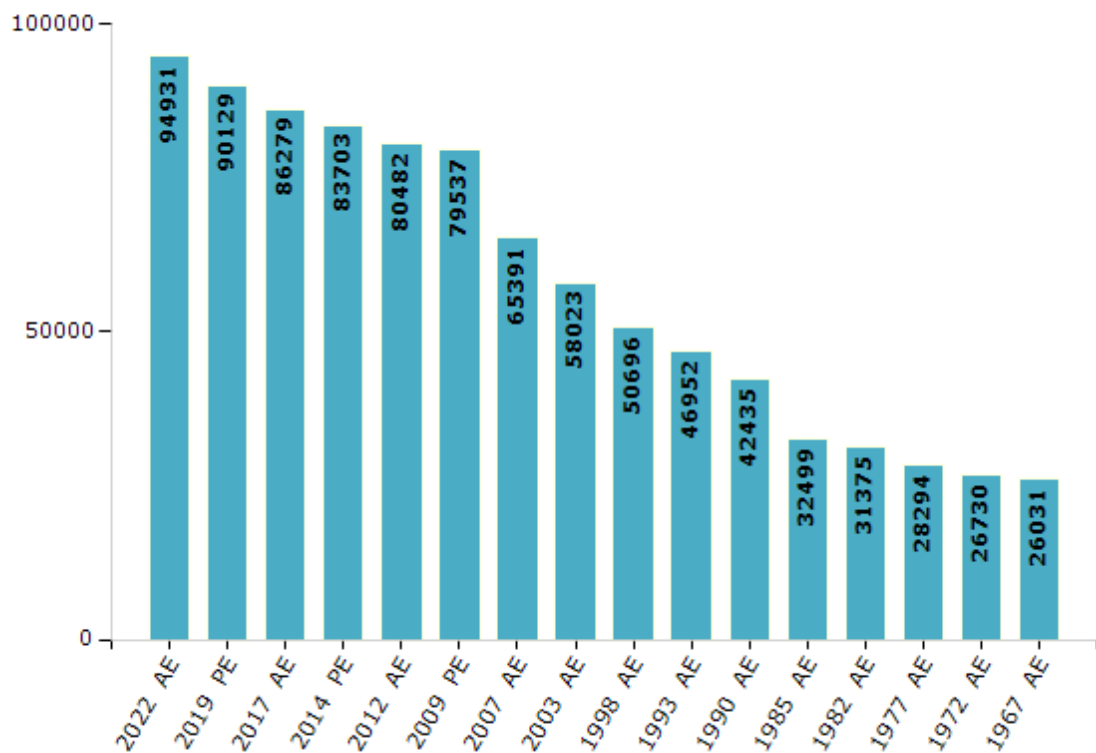


## Electoral Features

### Electors by Male & Female

Year	Male	Female	Others	Total	Year	Male	Female	Others	Total
2022 AE	47723	47205	3	94931	1998 AE	24176	26520	-	50696
2019 PE	45380	44749	0	90129	1993 AE	22693	24259	-	46952
2017 AE	43188	43091	0	86279	1990 AE	20105	22330	-	42435
2014 PE	42046	41657	0	83703	1985 AE	14891	17608	-	32499
2012 AE	40639	39843	0	80482	1982 AE	14469	16906	-	31375
2009 PE	39776	39761	-	79537	1977 AE	13371	14923	-	28294
2007 AE	32448	32943	-	65391	1972 AE	12796	13934	-	26730
2004 PE	-	-	-	-	1967 AE	-	-	-	26031
2003 AE	28118	29905	-	58023	1952 AE	-	-	-	-
1999 PE	-	-	-	-					

Number of Electors



Note : AE : Assembly Election, PE : Assembly Segment of Parliamentary Election

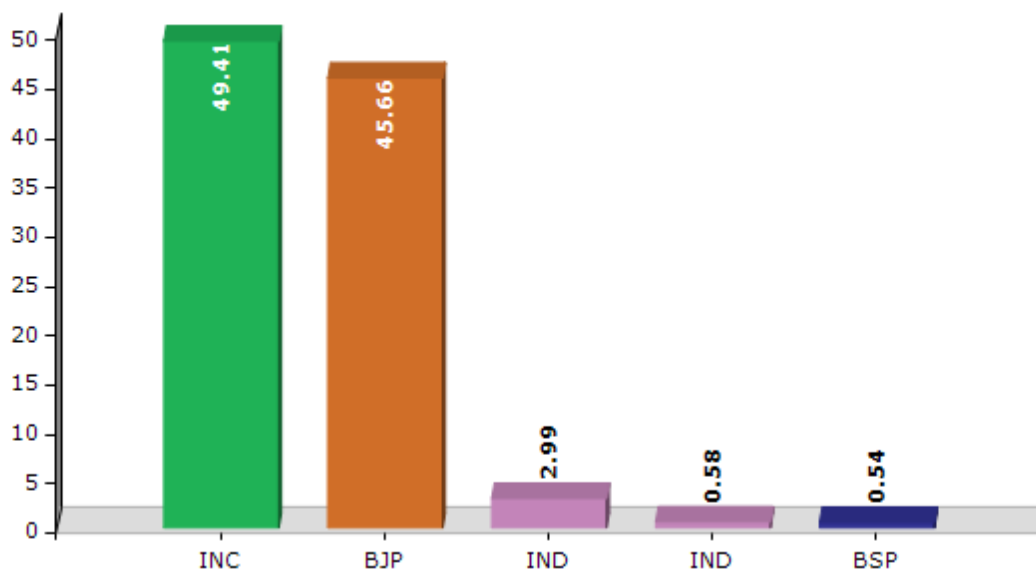


## Historical Summary Election Results

### Summary Result of Assembly Election - 2017

Candidate Name	Party	Votes	Votes %
Sukhvinder Singh Sukhu	INC	30980	49.41
Vijay Agnihotri	BJP	28631	45.66
Lekh Raj Lekha	IND	1875	2.99
Prithi Chand Sharma	IND	364	0.58
Ravi Parkash	BSP	339	0.54
Ranjeet Singh Jeetu	IND	302	0.48
	NOTA	210	0.33

Votes Percentage of Top Parties - 2017



## Polling Station Level Election Results

### Number and Name of Polling Stations (PS) (2022)

Number of Polling Stations	Name of Polling Stations	Number of Polling Stations	Name of Polling Stations
1	Kaloor	22	Batahli
2	Amlehar	23	Chamral
3	Moulanghat	24	Rutehan 1
4	Bhavrian	25	Rutehan 2
5	Sera	26	Dhanpur
6	Bhadrol 1	27	Guryali
7	Bhadrol 2	28	Mansoli
8	Pakhrol	29	Putrial 1
9	Bharmoti	30	Putrial 2
10	Manjhiar	31	Dol
11	Kohla	32	Bussal 1
12	Nadaun 1	33	Bussal 2
13	Nadaun 2	34	Bhou
14	Nagarda	35	Jihan
15	Nadaun 3	36	Chuthiar 1
16	Bela 1	37	Chuthiar 2
17	Bela 2	38	Karandola
18	Harmandir Mandyalan	39	Kamlahu 1
19	Tillu	40	Kamlahu 2
20	Jalari 1	41	Naryah
21	Jalari 2	42	Dangri

Contd....

## Polling Station Level Election Results

### Polling Station-wise Votes Secured by Overall Top Five Parties in Nadaun Assembly in Assembly Election (AE) under Hamirpur Parliamentary Constituency in Himachal Pradesh (2022)

Number of Polling Station	Winner - Sukhvinder Singh Sukhu (INC)	Runner-up - Vijay Agnihotri (BJP)	3rd - Shankey Thukral (AAP)	4th - Desh Raj Daroch (BSP)	5th - Ranjit Singh Jeetu (IND)	NOTA	Other	Total Votes Secured
36	331	256	9	1	0	2	0	599
37	353	268	19	4	3	1	1	649
38	315	283	5	1	1	1	1	607
39	334	253	10	1	1	1	0	600
40	364	259	11	1	0	1	0	636
41	437	333	8	5	2	4	0	789
42	443	381	13	2	1	2	1	843
43	286	309	7	0	0	1	1	604
44	415	344	35	2	0	2	1	799
45	462	347	16	2	1	0	3	831
46	272	325	5	4	1	2	0	609
47	265	316	13	1	0	2	1	598
48	428	233	45	1	1	2	0	710
49	310	129	20	3	0	1	1	464
50	333	178	18	0	2	0	0	531
51	107	184	1	0	1	0	0	293
52	338	301	4	1	1	0	0	645
53	237	353	0	3	1	1	1	596
54	403	382	14	0	0	3	5	807
55	176	241	3	0	0	2	0	422
56	204	298	8	2	0	0	0	512
57	189	297	49	2	0	1	0	538
58	236	168	18	1	0	1	0	424
59	452	333	8	1	3	1	1	799
60	250	323	4	0	23	3	1	604
61	344	369	5	3	6	5	1	733
62	425	399	15	5	2	0	2	848
63	469	327	46	2	0	3	0	847
64	142	103	12	0	0	0	0	257
65	321	209	2	3	0	1	1	537
66	169	256	1	5	0	2	0	433
67	329	349	7	2	1	0	1	689
68	262	232	4	0	0	3	2	503
69	236	290	3	6	0	0	0	535
70	72	465	0	0	0	3	1	541

Contd....

## Polling Station Level Election Results

### Winner, Runner-up and 3rd Party Position & Winning Margin According to Polling Stations in Nadaun Assembly in Assembly Election (AE) under Hamirpur Parliamentary Constituency in Himachal Pradesh (2022)

Polling Station Number	Winner Party	Winner Votes (%)	Runner-up Party	Runner-up Votes (%)	Winning Margin Votes (%)	Third Party	Third Party Votes (%)	Other Votes (%)
71	INC	406 (67.22)	BJP	186 (30.79)	220 (36.43)	BSP	7 (1.16)	5 (0.83)
72	BJP	237 (50.32)	INC	228 (48.41)	9 (1.91)	AAP	2 (0.42)	4 (0.85)
73	INC	405 (56.49)	BJP	298 (41.56)	107 (14.93)	IND (SKG)	4 (0.56)	10 (1.39)
74	BJP	377 (49.28)	INC	369 (48.24)	8 (1.04)	AAP	12 (1.57)	7 (0.92)
75	INC	389 (51.66)	BJP	346 (45.95)	43 (5.71)	AAP	10 (1.33)	8 (1.06)
76	INC	218 (52.03)	BJP	195 (46.54)	23 (5.49)	BSP	3 (0.72)	3 (0.72)
77	BJP	342 (56.07)	INC	257 (42.13)	85 (13.94)	AAP	9 (1.48)	2 (0.33)
78	BJP	351 (52.78)	INC	307 (46.17)	44 (6.61)	IND (RSJ)	2 (0.3)	5 (0.75)
79	INC	397 (67.17)	BJP	176 (29.78)	221 (37.39)	AAP	18 (3.05)	0 (0)
80	INC	417 (64.75)	BJP	201 (31.21)	216 (33.54)	AAP	19 (2.95)	7 (1.09)
81	BJP	290 (57.54)	INC	207 (41.07)	83 (16.47)	BSP	3 (0.6)	4 (0.79)
82	BJP	185 (61.06)	INC	115 (37.95)	70 (23.11)	AAP	3 (0.99)	0 (0)
83	BJP	185 (66.07)	INC	94 (33.57)	91 (32.5)	BSP	1 (0.36)	0 (0)
84	BJP	183 (62.46)	INC	106 (36.18)	77 (26.28)	IND (RSJ)	1 (0.34)	3 (1.02)
85	BJP	253 (53.94)	INC	206 (43.92)	47 (10.02)	AAP	7 (1.49)	3 (0.64)
86	BJP	302 (63.71)	INC	167 (35.23)	135 (28.48)	BSP	2 (0.42)	3 (0.63)
87	BJP	489 (59.34)	INC	326 (39.56)	163 (19.78)	BSP	2 (0.24)	7 (0.85)
88	INC	315 (50.97)	BJP	289 (46.76)	26 (4.21)	AAP	8 (1.29)	6 (0.97)
89	INC	356 (50)	BJP	341 (47.89)	15 (2.11)	AAP	5 (0.7)	10 (1.4)
90	BJP	458 (60.82)	INC	287 (38.11)	171 (22.71)	AAP	3 (0.4)	5 (0.66)
91	BJP	283 (55.06)	INC	228 (44.36)	55 (10.7)	AAP	1 (0.19)	2 (0.39)
92	INC	286 (52)	BJP	253 (46)	33 (6)	AAP	8 (1.45)	3 (0.55)
93	BJP	297 (57.01)	INC	202 (38.77)	95 (18.24)	AAP	14 (2.69)	8 (1.54)
94	BJP	430 (70.84)	INC	175 (28.83)	255 (42.01)	AAP	1 (0.16)	1 (0.16)
95	BJP	235 (57.32)	INC	170 (41.46)	65 (15.86)	AAP	3 (0.73)	2 (0.49)
96	BJP	330 (57.09)	INC	237 (41)	93 (16.09)	AAP	7 (1.21)	4 (0.69)
97	INC	161 (62.65)	BJP	94 (36.58)	67 (26.07)	AAP	0 (0)	2 (0.78)
98	BJP	399 (51.09)	INC	370 (47.38)	29 (3.71)	AAP	5 (0.64)	7 (0.9)
99	BJP	261 (49.81)	INC	249 (47.52)	12 (2.29)	AAP	8 (1.53)	6 (1.15)
100	BJP	147 (50.69)	INC	141 (48.62)	6 (2.07)	AAP	1 (0.34)	1 (0.34)
101	BJP	231 (68.55)	INC	100 (29.67)	131 (38.88)	AAP	2 (0.59)	4 (1.19)
102	INC	383 (53.05)	BJP	335 (46.4)	48 (6.65)	AAP	3 (0.42)	1 (0.14)
103	INC	218 (49.32)	BJP	218 (49.32)	0 (0)	AAP	3 (0.68)	3 (0.68)
104	BJP	212 (61.81)	INC	123 (35.86)	89 (25.95)	BSP	5 (1.46)	3 (0.87)
105	BJP	188 (52.81)	INC	164 (46.07)	24 (6.74)	AAP	1 (0.28)	3 (0.84)

Contd....

## Socio-Economic Amenities - Rural

### Access to Education Facilities

Particulars	Number of Villages (% of Population)				
	Available	Not Available	If Not Available (Distance of Nearest Facility)		
			A	B	C
Govt. Primary School	153 (55)	293 (45)	287 (44)	1 (0)	0 (0)
Private Primary School	12 (12)	434 (88)	4 (1)	0 (0)	0 (0)
Govt. Middle School	87 (37)	359 (63)	342 (58)	7 (2)	0 (0)
Private Middle School	15 (5)	431 (95)	3 (1)	0 (0)	0 (0)
Govt. Secondary School	42 (19)	404 (81)	376 (74)	19 (4)	0 (0)
Private Secondary School	5 (1)	441 (99)	4 (1)	0 (0)	0 (0)
Govt. Senior Secondary School	27 (14)	419 (86)	373 (75)	38 (8)	0 (0)
Private Senior Secondary School	6 (1)	440 (99)	3 (1)	0 (0)	0 (0)
Govt. Arts and Science Degree College	1 (1)	445 (99)	43 (13)	128 (30)	222 (43)
Private Arts and Science Degree College	1 (0)	445 (100)	37 (9)	12 (4)	2 (0)
Govt. Engineering College	0 (0)	446 (100)	0 (0)	1 (0)	443 (99)
Private Engineering College	0 (0)	446 (100)	0 (0)	0 (0)	2 (1)
Govt. Medicine College	0 (0)	446 (100)	0 (0)	1 (0)	445 (100)
Private Medicine College	0 (0)	446 (100)	0 (0)	0 (0)	0 (0)
Govt. Management Institute	0 (0)	446 (100)	0 (0)	1 (0)	445 (100)
Private Management Institute	0 (0)	446 (100)	0 (0)	0 (0)	0 (0)
Govt. Polytechnic	0 (0)	446 (100)	0 (0)	2 (0)	428 (96)
Private Polytechnic	0 (0)	446 (100)	0 (0)	11 (2)	5 (1)
Govt. Vocational Training School/ITI	1 (0)	445 (100)	84 (12)	121 (23)	232 (63)
Private Vocational Training School/ITI	0 (0)	446 (100)	1 (1)	4 (1)	3 (1)
Govt. Non Formal Training Centre	0 (0)	446 (100)	4 (1)	2 (0)	21 (5)
Private Non Formal Training Centre	2 (1)	444 (99)	73 (15)	166 (31)	178 (47)
Govt. School For Disabled	0 (0)	446 (100)	0 (0)	112 (16)	172 (38)
Private School For Disabled	2 (1)	444 (99)	24 (7)	40 (11)	96 (28)
Government Others	0 (0)	446 (100)	0 (0)	0 (0)	0 (0)
Private Others	1 (1)	445 (99)	0 (0)	0 (0)	0 (0)

Note : Distance A : Less than 5 km; B : Between 5-10 km; C : 10+ km.; Source : Data Analysis is based on 2011 Census.

## DISCLAIMER

The Terms of Use and Disclaimer of Datanet India Private Limited (hereinafter referred to as "Datanet") for use of this analysis report of **Nadaun Assembly Constituency (Nadaun Vidhan Sabha)** :-

1. **Assembly Factbook™** is a Registered Trade Mark owned by Datanet.
2. All the maps are sketched and graphical representation only and have not been drawn to the scale and also not to represent the actual geographical area or boundary of the unit.
3. The data for the aforesaid analysis is based on authentic sources and has been culled from the various publications of Census, CSO and NSSO for district and block level data, various central and state government departments, Central & State Elections Commissions and the concerned Returning Officers' releases, Electoral Rolls, Election results and allied publications, internal assessment, surveys, estimates and analysis. Therefore, certain adjustment of data at micro level may have been done to arrive closer to the macro data.
4. Data have been provided on an "As Is" and "As AVAILABLE" basis
5. The colours shown in the maps or diagram and charts of a particular party, alliance or AC are indicative and do not represent them.
6. This publication which includes maps, sheets, graphs and data would be the property under copyright of Datanet only. The user may use these for its internal study, analysis and research purposes. It's public display, re-selling or any commercial uses by the user are not allowed.
7. Datanet has taken due care and caution in compilation and processing of data and allied information, but does not guarantee the accuracy, adequacy or completeness of any information/analysis and will be not responsible for any errors or omissions or for the results obtained from the use of such information/analysis.
8. All the contents for the publication have been culled from various authentic sources and Datanet reasonably believes such sources to be reliable, but does not make any representations, express or implied as to the accuracy or fitness of use of such information. The information or contents of the information/analysis do not constitute advice and should not be relied upon in making (or refraining from making) any decision. Any reliance placed upon the information provided by Datanet is the sole responsibility and strictly at the user's risk.
9. In no event will Datanet be liable for any damages (including, without limitation, damages for loss of business projects, or loss of profits) arising in contract, tort or otherwise from the use of or inability to use any of its contents, or from any action taken (or refrained from being taken) as a result of using the analysis or any of its contents. Datanet its directors, owners, editors, officials, employees, distributor and agents or any associate will not be liable for any errors in the information contained or any consequences arising from the use of the contents of the provided information/analysis.
10. If any provision of these terms and conditions is held invalid or illegal or unenforceable for any reason by any court of competent jurisdiction, such provision shall be severed and the remainder of provisions of the terms and conditions shall continue in full force and effect as if the Term of Use had been executed with the invalid, illegal or unenforceable provision eliminated.
11. If there are any discrepancies in the information provided, please bring it to attention of Datanet for suitable rectification measures.

Buy Online This Complete Book At  
**Datanet India eBooks Store**

[www.indiastatpublications.com](http://www.indiastatpublications.com)

or go directly at

[http://www.indiastatpublications.com/  
Assembly\\_factbook/Himachal Pradesh/Hamirpur/ Nadaun](http://www.indiastatpublications.com/Assembly_factbook/Himachal%20Pradesh/Hamirpur/Nadaun)

 **india**stat**elections**

ISBN : 978-93-5905-154-3



9 789359 051543