



Himachal Pradesh

Assembly Factbook™

Bharmour Assembly Constituency



Key Electoral Data of Bharmour
Assembly Constituency (Vidhan Sabha)

Himachal Pradesh
Assembly FactbookTM
Bharmour Assembly Constituency



Bharmour Vidhan Sabha

Editor & Director

Dr. R.K. Thukral

Research Editor

Dr. Shafeeq Rahman

Compiled, Researched and Published by Datanet India Pvt. Ltd.

D-100, 1st Floor,

Okhla Industrial Area, Phase-I,

New Delhi- 110020.

Ph.: 91-11- 43580781-84

Email : support@indiastatpublications.com

Website : www.indiastatelections.com

Online Book Store :

www.indiastatpublications.com

Report No. : AFB/HP-02-0624

ISBN : 978-93-5822-685-0

First Edition : January, 2018

Seventh Updated Edition : June, 2024

Price : Rs.11500/-

US\$ 310

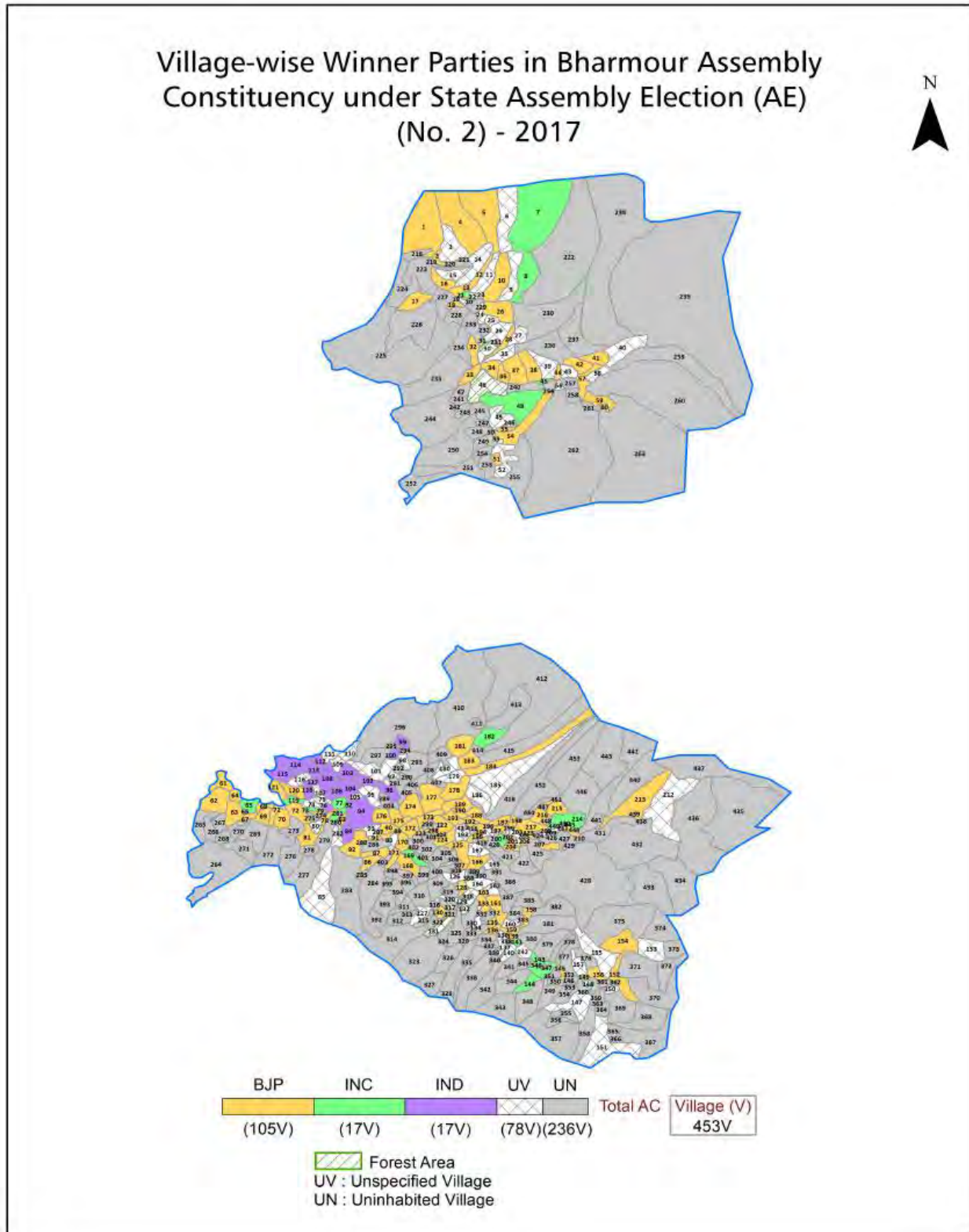
© **Datanet India Pvt. Ltd.**

All rights reserved. No part of this book may be reproduced, stored in a retrieval system or transmitted in any form or by any means, mechanical photocopying, photographing, scanning, recording or otherwise without the prior written permission of the publisher. Please refer to Disclaimer at page no. 174 for the use of this publication.

Printed in India

No.	Particulars	Page No.
	Introduction	
1	Assembly Constituency - (Vidhan Sabha) at a Glance Features of Assembly as per Delimitation Commission of India (2008)	1-2
	Location and Political Maps	
2	Location Map Boundaries of Assembly Constituency - (Vidhan Sabha) in District Boundaries of Assembly Constituency under Parliamentary Constituency - (Lok Sabha) Village-wise Winner Parties- 2024, 2022, 2019, 2017, 2014, 2012 and 2009	3-11
	Administrative Setup (2011)	
3	District Sub-district Towns Villages Inhabited Villages Uninhabited Villages Village Panchayat Intermediate Panchayat	12-25
	Demographics (2011)	
4	Population Households Rural/Urban Population Villages by Population Size Sex Ratio (Total & 0-6 Years) Religious Population Social Population Literacy Rate	26-27
	Electoral Features	
5	Important Dates of Last Elections Held Electors by Gender Service Electors Voters Voters Turnout Polling Stations & Average Number of Electors per Polling Station Electors by Age Group Present Elected Representatives	28-33
	Historical Summary Election Results	
6	Vote Share of Major Parties Winning Margin (Number & Percentage) Polarity of Parties Summary Result of Assembly Segment of Parliamentary Elections 2024, 2019, 2014, 2009, 2004 and 1999 Summary Result of Assembly Elections 2022, 2017, 2012, 2007, 2003, 1998, 1993, 1990, 1985, 1982, 1977, 1972, 1967 and 1952	34-56
	Polling Station Level Election Results	
7	Name and Number of Polling Station 2024, 2022, 2019, 2017, 2014, 2012 and 2009 Polling Station-wise Electors, Voters & Voters Turnout 2024, 2022, 2019, 2017, 2014, 2012 and 2009 Polling Station wise Elections Results 2024, 2022, 2019, 2017, 2014, 2012 and 2009	57-154
	Share of Assembly Constituency	
8	Share of Assembly Constituency - (Vidhan Sabha) in State, District and Parliamentary Constituency - (Lok Sabha)	155
	Socio-Economic Amenities (2011)	
9	Access to Administrative Units Agricultural, Manufacturing and Industrial Commodities Demographic Indicators Education Health & Manpower Drinking Water Supply Sanitation Entertainment and Recreations Infrastructure Power Food Allocation Distribution and Marketing of Agriculture Commodities Infrastructure Transport and Road Infrastructure Communication Banking and Financial Services Land Use Irrigation Source	157-171
10	Abbreviation & Sources	172-173
11	Disclaimer	174

Location & Political Map



Administrative Setup

List of Village Panchayat & Intermediate Panchayat (Block) Name - 2011

Village Name	Village Panchayat Name	Intermediate Panchayat Name
Adraund (93)	Brehi	Mehla
Agasan (111)	Siyur	Bharmaur
Aghara (136)	Baloth	Mehla
Ajog (100)	Purthi	Pangi
Almi (132)	Khundel	Mehla
Andarla Graon (183)	Holi	Bharmaur
Auhra (22)	Aura	Bharmaur
Bajol (221)	Bajol	Bharmaur
Bakan (79)	Bakan	Mehla
Bakkal (147)	Radi	Mehla
Balmui (63)	Hadsar	Bharmaur
Banog (108)	Sanh	Bharmaur
Banun (184)	Holi	Bharmaur
Barai (121)	Greema	Bharmaur
Barari (109)	Sanh	Bharmaur
Bargaraon (40)	Badgran	Bharmaur
Batara (106)	Sanh	Bharmaur
Bhadar (37)	Badgran	Bharmaur
Bhador (119)	Piyoohra	Mehla
Bharmour (97)	Bharmour	Bharmaur
Bharwali (152)	Kuwarsi	Bharmaur
Bhatwara (146)	Radi	Mehla
Bloth (137)	Baloth	Mehla
Chacharwas (36)	Karyuni Kothi	Pangi
Chaled (100)	Greema	Bharmaur
Chaloli (13)	Dharwas	Pangi
Chanaota (144)	Chanhota	Bharmaur
Chari (63)	Chari	Mehla
Chasak (66)	Sechu	Pangi

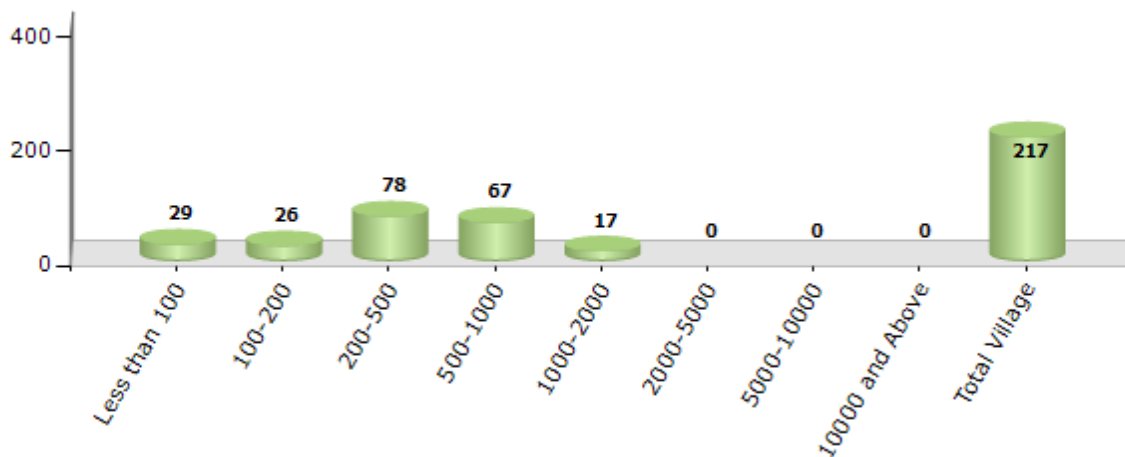
Contd....

Demographics

Number of Villages by Population Size - 2011

Less than 100	100-200	200-500	500-1000	1000-2000	2000-5000	5000-10000	10000 and Above	Total Village
29	26	78	67	17	0	0	0	217

Number of Villages by Population Size - 2011

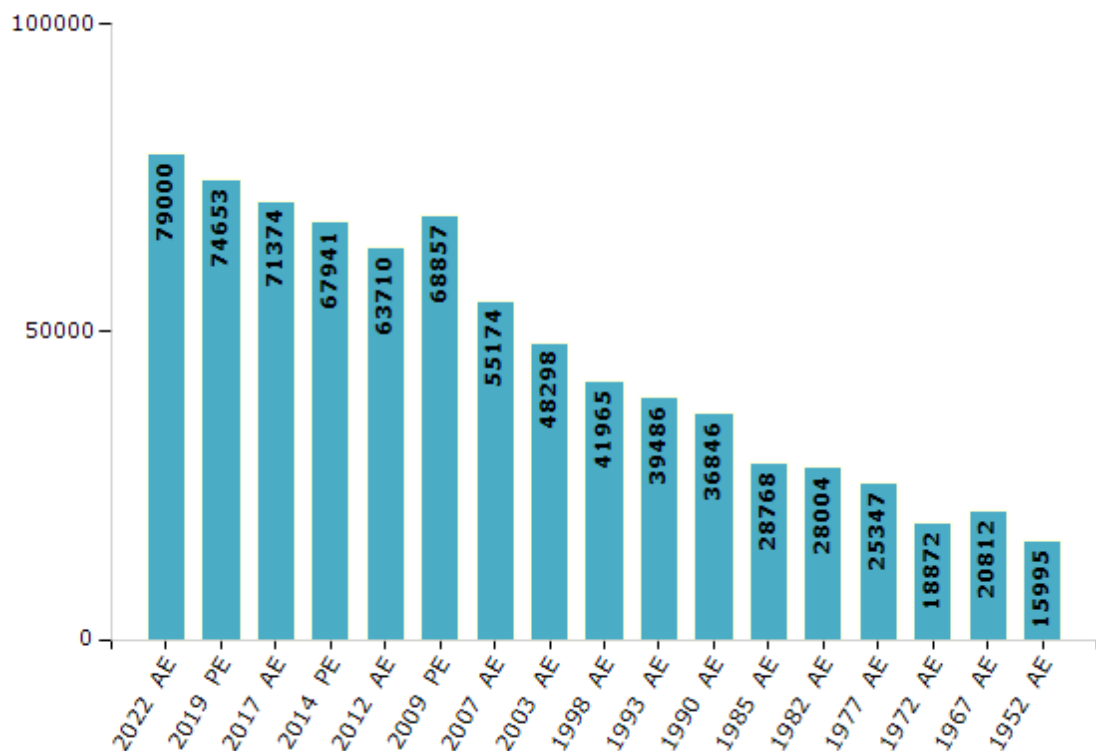


Electoral Features

Electors by Male & Female

Year	Male	Female	Others	Total	Year	Male	Female	Others	Total
2022 AE	40927	38071	2	79000	1998 AE	21822	20143	-	41965
2019 PE	38618	36035	0	74653	1993 AE	20637	18849	-	39486
2017 AE	36993	34381	0	71374	1990 AE	19406	17440	-	36846
2014 PE	35250	32691	0	67941	1985 AE	15127	13641	-	28768
2012 AE	33487	30223	0	63710	1982 AE	14831	13173	-	28004
2009 PE	35529	33328	-	68857	1977 AE	13441	11906	-	25347
2007 AE	28588	26586	-	55174	1972 AE	10193	8679	-	18872
2004 PE	-	-	-	-	1967 AE	-	-	-	20812
2003 AE	25291	23007	-	48298	1952 AE	-	-	-	15995
1999 PE	-	-	-	-					

Number of Electors



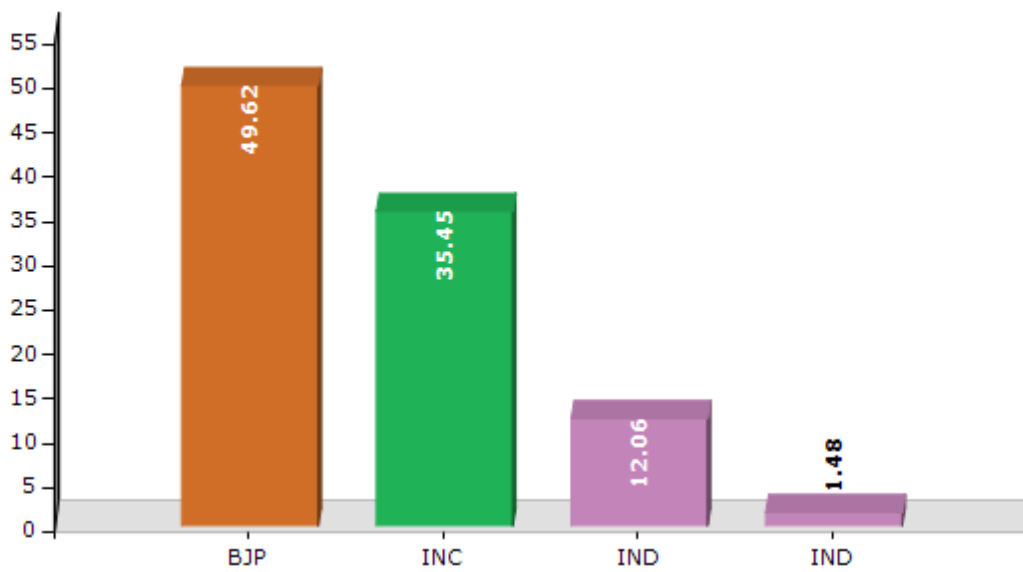
Note : AE : Assembly Election, PE : Assembly Segment of Parliamentary Election

Historical Summary Election Results

Summary Result of Assembly Election - 2017

Candidate Name	Party	Votes	Votes %
Jia Lal	BJP	25744	49.62
Thakur Singh Bharmouri	INC	18395	35.45
Lalit Thakur	IND	6255	12.06
Janam Singh	IND	769	1.48
	NOTA	723	1.39

Votes Percentage of Top Parties - 2017



Polling Station Level Election Results

Number and Name of Polling Stations (PS) (2022)

Number of Polling Stations	Name of Polling Stations	Number of Polling Stations	Name of Polling Stations
1	Luj	22	Hillor
2	Dharwas	23	Ghisal
3	Chaloli	24	Sahali
4	Rusmus	25	Udeen
5	Sural Bhatouri	26	Chasak Bhatori
6	Hundan Bhatouri	27	Chasak
7	Takwas	28	Sechu
8	Seri Bhatwas	29	Shoon
9	Seri	30	Dhanala
10	Maliyat 1	31	Rei
11	Maliyat 2	32	Mindhal
12	Ghangheet	33	Kulal
13	Jhalwas	34	D.P.F.Purthi
14	Praghwai	35	Thandal
15	Pregran	36	Shour
16	Punto	37	Ahlami
17	Findpar	38	Baloth
18	Findru	39	Groundi
19	Kumar	40	Kalouns
20	Sach	41	Khundel
21	Kuthal	42	Gaan

Contd....

Polling Station Level Election Results

Polling Station-wise Votes Secured by Overall Top Five Parties in Bharmour Assembly in Assembly Election (AE) under Mandi Parliamentary Constituency in Himachal Pradesh (2022)

Number of Polling Station	Winner - Dr. Janak Raj (BJP)	Runner-up - Thakur Singh Bharmouri (INC)	3rd - Puja (HIMJKP)	4th - Parkash Chand (AAP)	5th - Rasila Ram (HCHLJP)	NOTA	Other	Total Votes Secured
36	264	162	1	3	1	6	0	437
37	91	39	0	1	0	0	0	131
38	277	253	1	3	3	1	0	538
39	131	155	0	1	0	2	0	289
40	56	53	2	0	0	3	0	114
41	415	285	5	1	3	3	0	712
42	222	272	2	0	2	3	0	501
43	310	243	1	0	2	1	0	557
44	265	207	4	3	1	11	0	491
45	145	136	0	0	0	1	0	282
46	227	208	2	0	2	6	0	445
47	345	278	3	1	0	6	0	633
48	200	219	2	4	4	5	0	434
49	294	166	0	5	4	6	0	475
50	200	184	0	1	2	2	0	389
51	314	118	5	1	3	10	0	451
52	228	98	0	0	1	1	0	328
53	324	265	1	7	1	3	0	601
54	308	110	3	2	1	3	0	427
55	208	201	4	0	0	3	0	416
56	363	228	3	1	8	5	0	608
57	156	168	2	0	1	0	0	327
58	81	118	0	1	0	1	0	201
59	481	167	1	2	0	12	0	663
60	213	157	2	1	1	3	0	377
61	159	92	1	1	0	2	0	255
62	238	203	2	1	1	4	0	449
63	263	328	1	4	1	6	0	603
64	340	269	6	1	0	6	0	622
65	121	42	1	0	0	0	0	164
66	468	454	3	1	2	6	0	934
67	420	245	2	3	4	12	0	686
68	280	93	0	1	2	4	0	380
69	231	87	0	0	0	9	0	327
70	387	231	5	1	3	11	0	638

Contd....

Polling Station Level Election Results

Winner, Runner-up and 3rd Party Position & Winning Margin According to Polling Stations in Bharmour Assembly in Assembly Election (AE) under Mandi Parliamentary Constituency in Himachal Pradesh (2022)

Polling Station Number	Winner Party	Winner Votes (%)	Runner-up Party	Runner-up Votes (%)	Winning Margin Votes (%)	Third Party	Third Party Votes (%)	Other Votes (%)
71	BJP	284 (52.01)	INC	256 (46.89)	28 (5.12)	HCHLJP	3 (0.55)	3 (0.55)
72	INC	227 (54.57)	BJP	182 (43.75)	45 (10.82)	HIMJKP	2 (0.48)	5 (1.2)
73	BJP	113 (54.07)	INC	93 (44.5)	20 (9.57)	HIMJKP	0 (0)	3 (1.44)
74	BJP	144 (52.55)	INC	126 (45.99)	18 (6.56)	HCHLJP	1 (0.36)	3 (1.09)
75	BJP	528 (61.47)	INC	319 (37.14)	209 (24.33)	HIMJKP	5 (0.58)	7 (0.81)
76	BJP	130 (62.5)	INC	78 (37.5)	52 (25)	HIMJKP	0 (0)	0 (0)
77	BJP	386 (57.53)	INC	280 (41.73)	106 (15.8)	HIMJKP	1 (0.15)	4 (0.6)
78	BJP	256 (50.49)	INC	242 (47.73)	14 (2.76)	HIMJKP	3 (0.59)	6 (1.18)
79	BJP	313 (56.09)	INC	237 (42.47)	76 (13.62)	HIMJKP	2 (0.36)	6 (1.08)
80	BJP	352 (69.98)	INC	143 (28.43)	209 (41.55)	HIMJKP	2 (0.4)	6 (1.19)
81	BJP	182 (49.86)	INC	179 (49.04)	3 (0.82)	HIMJKP	3 (0.82)	1 (0.27)
82	BJP	327 (51.25)	INC	297 (46.55)	30 (4.7)	AAP	4 (0.63)	10 (1.57)
83	BJP	257 (55.87)	INC	200 (43.48)	57 (12.39)	HCHLJP	2 (0.43)	1 (0.22)
84	BJP	276 (66.19)	INC	127 (30.46)	149 (35.73)	AAP	13 (3.12)	1 (0.24)
85	BJP	237 (58.37)	INC	158 (38.92)	79 (19.45)	HIMJKP	5 (1.23)	6 (1.48)
86	BJP	146 (64.04)	INC	80 (35.09)	66 (28.95)	AAP	1 (0.44)	1 (0.44)
87	BJP	41 (68.33)	INC	19 (31.67)	22 (36.66)	HIMJKP	0 (0)	0 (0)
88	BJP	140 (57.61)	INC	102 (41.98)	38 (15.63)	HIMJKP	0 (0)	1 (0.41)
89	INC	212 (52.09)	BJP	185 (45.45)	27 (6.64)	HIMJKP	6 (1.47)	4 (0.98)
90	BJP	81 (75)	INC	25 (23.15)	56 (51.85)	HIMJKP	0 (0)	2 (1.85)
91	INC	240 (52.06)	BJP	216 (46.85)	24 (5.21)	HIMJKP	2 (0.43)	3 (0.65)
92	INC	125 (65.1)	BJP	65 (33.85)	60 (31.25)	HIMJKP	0 (0)	2 (1.04)
93	BJP	189 (60.58)	INC	120 (38.46)	69 (22.12)	HIMJKP	1 (0.32)	2 (0.64)
94	INC	204 (50.12)	BJP	198 (48.65)	6 (1.47)	HIMJKP	3 (0.74)	2 (0.49)
95	INC	137 (55.24)	BJP	110 (44.35)	27 (10.89)	HIMJKP	1 (0.4)	0 (0)
96	BJP	154 (59.92)	INC	98 (38.13)	56 (21.79)	HCHLJP	2 (0.78)	3 (1.17)
97	INC	180 (52.02)	BJP	162 (46.82)	18 (5.2)	HCHLJP	2 (0.58)	2 (0.58)
98	INC	187 (58.44)	BJP	127 (39.69)	60 (18.75)	HCHLJP	2 (0.63)	4 (1.25)
99	INC	212 (53.67)	BJP	180 (45.57)	32 (8.1)	HCHLJP	1 (0.25)	2 (0.51)
100	INC	338 (58.08)	BJP	244 (41.92)	94 (16.16)	HIMJKP	0 (0)	0 (0)
101	INC	82 (65.6)	BJP	42 (33.6)	40 (32)	HIMJKP	1 (0.8)	0 (0)
102	BJP	172 (53.09)	INC	150 (46.3)	22 (6.79)	HIMJKP	0 (0)	2 (0.62)
103	BJP	217 (51.54)	INC	201 (47.74)	16 (3.8)	HIMJKP	2 (0.48)	1 (0.24)
104	BJP	247 (54.05)	INC	203 (44.42)	44 (9.63)	HCHLJP	2 (0.44)	5 (1.09)
105	INC	298 (50.59)	BJP	285 (48.39)	13 (2.2)	HIMJKP	2 (0.34)	4 (0.68)

Contd....

Socio-Economic Amenities - Rural

Access to Education Facilities

Particulars	Number of Villages (% of Population)				
	Available	Not Available	If Not Available (Distance of Nearest Facility)		
			A	B	C
Govt. Primary School	183 (94)	34 (6)	22 (4)	12 (2)	0 (0)
Private Primary School	10 (10)	207 (90)	0 (0)	0 (0)	0 (0)
Govt. Middle School	107 (66)	110 (34)	70 (24)	33 (8)	7 (1)
Private Middle School	7 (6)	210 (94)	0 (0)	0 (0)	0 (0)
Govt. Secondary School	49 (33)	168 (67)	62 (31)	74 (29)	30 (7)
Private Secondary School	2 (1)	215 (99)	0 (0)	1 (0)	1 (0)
Govt. Senior Secondary School	27 (19)	190 (81)	49 (29)	71 (32)	68 (20)
Private Senior Secondary School	2 (1)	215 (99)	0 (0)	0 (0)	2 (0)
Govt. Arts and Science Degree College	2 (2)	215 (98)	9 (5)	8 (4)	198 (89)
Private Arts and Science Degree College	0 (0)	217 (100)	0 (0)	0 (0)	0 (0)
Govt. Engineering College	0 (0)	217 (100)	0 (0)	0 (0)	92 (27)
Private Engineering College	0 (0)	217 (100)	0 (0)	0 (0)	125 (73)
Govt. Medicine College	0 (0)	217 (100)	0 (0)	0 (0)	217 (100)
Private Medicine College	0 (0)	217 (100)	0 (0)	0 (0)	0 (0)
Govt. Management Institute	0 (0)	217 (100)	0 (0)	0 (0)	98 (31)
Private Management Institute	0 (0)	217 (100)	0 (0)	0 (0)	119 (69)
Govt. Polytechnic	0 (0)	217 (100)	0 (0)	0 (0)	211 (99)
Private Polytechnic	0 (0)	217 (100)	0 (0)	0 (0)	6 (1)
Govt. Vocational Training School/ITI	2 (2)	215 (98)	10 (6)	13 (6)	191 (86)
Private Vocational Training School/ITI	0 (0)	217 (100)	0 (0)	0 (0)	1 (0)
Govt. Non Formal Training Centre	0 (0)	217 (100)	0 (0)	0 (0)	216 (100)
Private Non Formal Training Centre	0 (0)	217 (100)	0 (0)	0 (0)	1 (0)
Govt. School For Disabled	0 (0)	217 (100)	0 (0)	0 (0)	205 (96)
Private School For Disabled	0 (0)	217 (100)	0 (0)	0 (0)	12 (4)
Government Others	0 (0)	217 (100)	0 (0)	0 (0)	0 (0)
Private Others	0 (0)	217 (100)	0 (0)	0 (0)	0 (0)

Note : Distance A : Less than 5 km; B : Between 5-10 km; C : 10+ km.; Source : Data Analysis is based on 2011 Census.

DISCLAIMER

The Terms of Use and Disclaimer of Datanet India Private Limited (hereinafter referred to as "Datanet") for use of this analysis report of **Bharmour Assembly Constituency (Bharmour Vidhan Sabha)** :-

1. **Assembly Factbook™** is a Registered Trade Mark owned by Datanet.
2. All the maps are sketched and graphical representation only and have not been drawn to the scale and also not to represent the actual geographical area or boundary of the unit.
3. The data for the aforesaid analysis is based on authentic sources and has been culled from the various publications of Census, CSO and NSSO for district and block level data, various central and state government departments, Central & State Elections Commissions and the concerned Returning Officers' releases, Electoral Rolls, Election results and allied publications, internal assessment, surveys, estimates and analysis. Therefore, certain adjustment of data at micro level may have been done to arrive closer to the macro data.
4. Data have been provided on an "As Is" and "As AVAILABLE" basis
5. The colours shown in the maps or diagram and charts of a particular party, alliance or AC are indicative and do not represent them.
6. This publication which includes maps, sheets, graphs and data would be the property under copyright of Datanet only. The user may use these for its internal study, analysis and research purposes. It's public display, re-selling or any commercial uses by the user are not allowed.
7. Datanet has taken due care and caution in compilation and processing of data and allied information, but does not guarantee the accuracy, adequacy or completeness of any information/analysis and will be not responsible for any errors or omissions or for the results obtained from the use of such information/analysis.
8. All the contents for the publication have been culled from various authentic sources and Datanet reasonably believes such sources to be reliable, but does not make any representations, express or implied as to the accuracy or fitness of use of such information. The information or contents of the information/analysis do not constitute advice and should not be relied upon in making (or refraining from making) any decision. Any reliance placed upon the information provided by Datanet is the sole responsibility and strictly at the user's risk.
9. In no event will Datanet be liable for any damages (including, without limitation, damages for loss of business projects, or loss of profits) arising in contract, tort or otherwise from the use of or inability to use any of its contents, or from any action taken (or refrained from being taken) as a result of using the analysis or any of its contents. Datanet its directors, owners, editors, officials, employees, distributor and agents or any associate will not be liable for any errors in the information contained or any consequences arising from the use of the contents of the provided information/analysis.
10. If any provision of these terms and conditions is held invalid or illegal or unenforceable for any reason by any court of competent jurisdiction, such provision shall be severed and the remainder of provisions of the terms and conditions shall continue in full force and effect as if the Term of Use had been executed with the invalid, illegal or unenforceable provision eliminated.
11. If there are any discrepancies in the information provided, please bring it to attention of Datanet for suitable rectification measures.

Buy Online This Complete Book At
Datanet India eBooks Store

www.indiastatpublications.com

or go directly at

[http://www.indiastatpublications.com/
Assembly_factbook/Himachal Pradesh/Mandi/ Bharmour](http://www.indiastatpublications.com/Assembly_factbook/Himachal%20Pradesh/Mandi/Bharmour)



i **india**stat**elections**

ISBN : 978-93-5822-685-0



9 789358 122685 0