



Himachal Pradesh

Assembly Factbook™

Kasauli Assembly Constituency



Key Electoral Data of Kasauli
Assembly Constituency (Vidhan Sabha)

Himachal Pradesh
Assembly FactbookTM
Kasauli Assembly Constituency



Kasauli Vidhan Sabha

Editor & Director

Dr. R.K. Thukral

Research Editor

Dr. Shafeeq Rahman

**Compiled, Researched and Published by
Datanet India Pvt. Ltd.**

D-100, 1st Floor,

Okhla Industrial Area, Phase-I,

New Delhi- 110020.

Ph.: 91-11- 43580781-84

Email : support@indiastatpublications.com

Website : www.indiastatelections.com

Online Book Store :

www.indiastatpublications.com

Report No. : AFB/HP-54-0125

ISBN : 978-93-5905-272-4

First Edition : January, 2018

Eighth Updated Edition : January, 2025

Price : Rs.11500/-

US\$ 310

© **Datanet India Pvt. Ltd.**

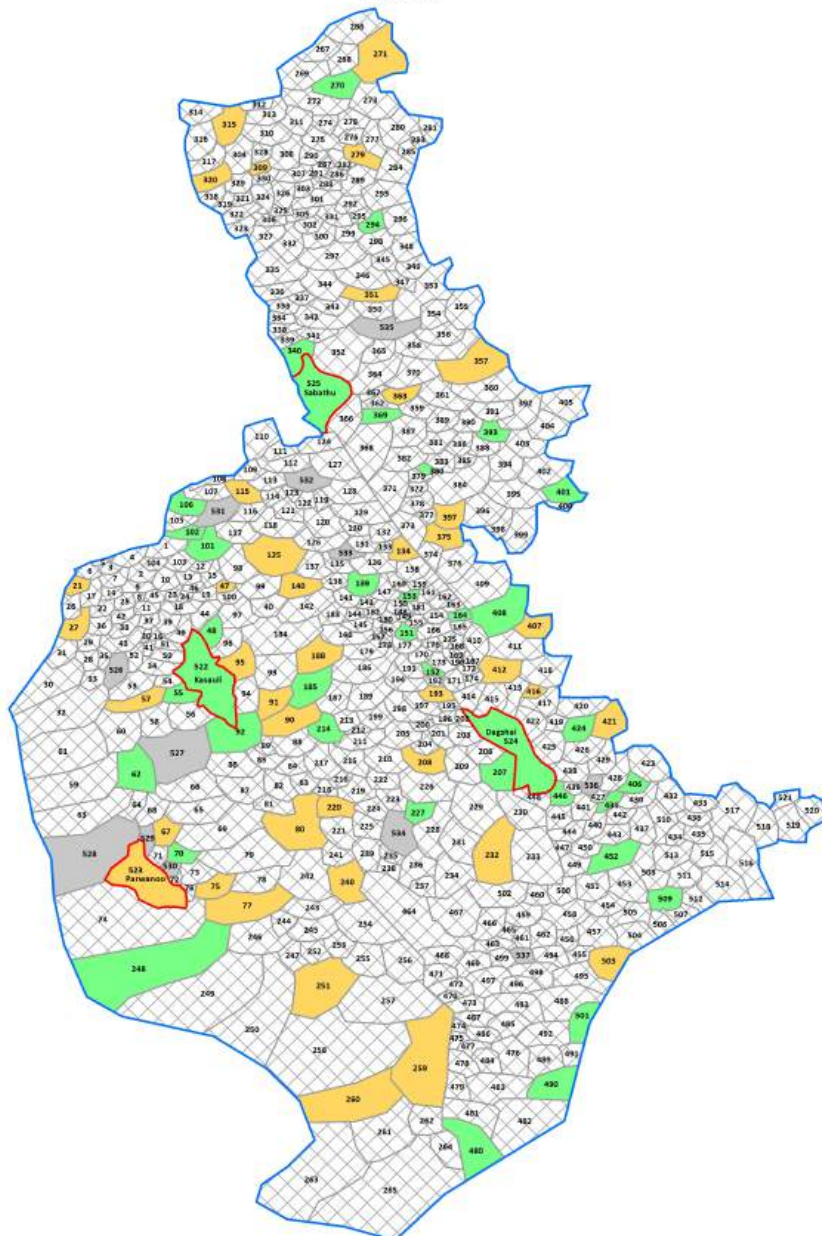
All rights reserved. No part of this book may be reproduced, stored in a retrieval system or transmitted in any form or by any means, mechanical photocopying, photographing, scanning, recording or otherwise without the prior written permission of the publisher. Please refer to Disclaimer at page no. 153 for the use of this publication.

Printed in India

No.	Particulars	Page No.
	Introduction	
1	Assembly Constituency - (Vidhan Sabha) at a Glance Features of Assembly as per Delimitation Commission of India (2008)	1-2
	Location and Political Maps	
2	Location Map Boundaries of Assembly Constituency - (Vidhan Sabha) in District Boundaries of Assembly Constituency under Parliamentary Constituency - (Lok Sabha) Town & Village-wise Winner Parties- 2024, 2022, 2019, 2017, 2014, 2012 and 2009	3-11
	Administrative Setup (2011)	
3	District Sub-district Towns Villages Inhabited Villages Uninhabited Villages Village Panchayat Intermediate Panchayat	12-37
	Demographics (2011)	
4	Population Households Rural/Urban Population Towns and Villages by Population Size Sex Ratio (Total & 0-6 Years) Religious Population Social Population Literacy Rate	38-39
	Electoral Features	
5	Important Dates of Last Elections Held Electors by Gender Service Electors Voters Voters Turnout Polling Stations & Average Number of Electors per Polling Station Electors by Age Group Present Elected Representatives	40-45
	Historical Summary Election Results	
6	Vote Share of Major Parties Winning Margin (Number & Percentage) Polarity of Parties Summary Result of Assembly Segment of Parliamentary Elections 2024, 2019, 2014, 2009, 2004 and 1999 Summary Result of Assembly Elections 2022, 2017, 2012, 2007, 2003, 1998, 1993, 1990, 1985, 1982 and 1977	46-65
	Polling Station Level Election Results	
7	Name and Number of Polling Station 2024, 2022, 2019, 2017, 2014, 2012 and 2009 Polling Station-wise Electors, Voters & Voters Turnout 2024, 2022, 2019, 2017, 2014, 2012 and 2009 Polling Station wise Elections Results 2024, 2022, 2019, 2017, 2014, 2012 and 2009	66-133
	Share of Assembly Constituency	
8	Share of Assembly Constituency - (Vidhan Sabha) in State, District and Parliamentary Constituency - (Lok Sabha)	134
	Socio-Economic Amenities (2011)	
9	Access to Administrative Units Agricultural, Manufacturing and Industrial Commodities Demographic Indicators Education Health & Manpower Drinking Water Supply Sanitation Entertainment and Recreations Infrastructure Power Food Allocation Distribution and Marketing of Agriculture Commodities Infrastructure Transport and Road Infrastructure Communication Banking and Financial Services Land Use Irrigation Source	136-150
10	Abbreviation & Sources	151-152
11	Disclaimer	153

Location & Political Map

Town & Village-wise Winner Parties in Kasauli Assembly
Constituency under State Assembly Election (AE) (No. 54)
2017



BJP INC UV UN
 (1T+39V) (3T+35V) (447V) (12V)
 UV : Unspecified Village
 UN : Uninhabited Village

Total AC	Town (T)	Village (V)
4T		533V

Administrative Setup

List of Village Panchayat & Intermediate Panchayat (Block) Name - 2011

Village Name	Village Panchayat Name	Intermediate Panchayat Name
Adna (883)	Bhoj Nagar	Solan
Ahni (721)	Ganol	Dharampur
Alobra (282)	Jadli	Solan
Anji (237)	Jabal Jamrot	Solan
Anji (734)	Kot	Dharampur
Anji (898)	Anji Matla	Dharampur
Anji Brahmana (689)	Rouri	Dharampur
Anji Brahmana (806)	Barog	Solan
Anji Chamaran (682)	Rouri	Dharampur
Anji Chanala (703)	Hurang	Dharampur
Ashnala (854)	Neri Kalan	Solan
Auda Nichla (160)	Nahari	Dharampur
Auda Uparla (156)	Nahari	Dharampur
Badha (714)	Garkhal Sanawar	Dharampur
Badhal Chamaran (825)	Anehech	Solan
Badhauni (799)	Chewa	Solan
Badhel (34)	Delgi	Kandaghat
Badyar (471)	Nichli Ganguri	Dharampur
Bag (252)	Jadli	Solan
Bag (276)	Haripur	Solan
Bagar (641)	Anji	Solan
Bajol (599)	Sanhol	Solan
Baldiyan (168)	Kot Beja	Dharampur
Bamanhal (692)	Gulhari	Dharampur
Banasar (945)	Banasar	Dharampur
Bandh (858)	Neri Kalan	Solan
Bani (240)	Jabal Jamrot	Solan
Banian (3)	Chamian	Dharampur
Baniyani (780)	Anji Matla	Dharampur

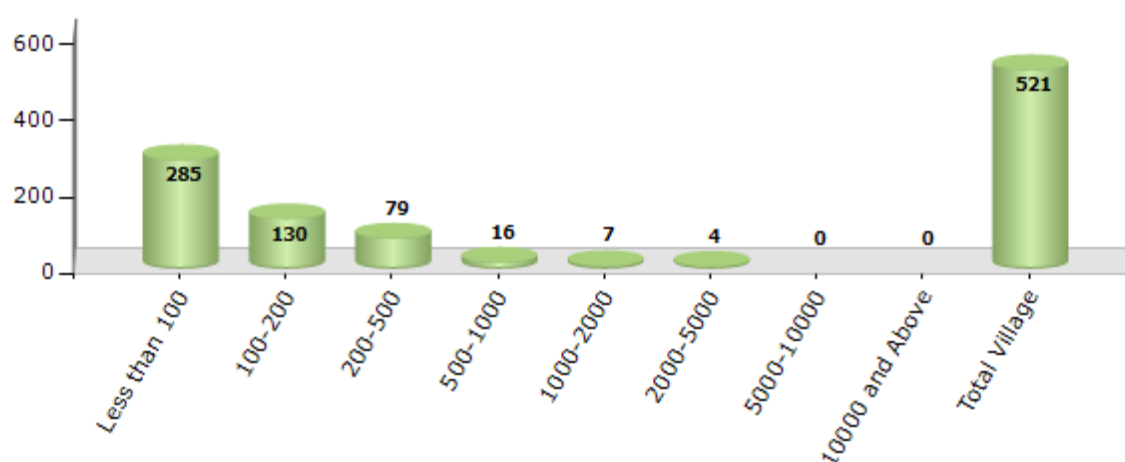
Contd....

Demographics

Number of Villages by Population Size - 2011

Less than 100	100-200	200-500	500-1000	1000-2000	2000-5000	5000-10000	10000 and Above	Total Village
285	130	79	16	7	4	0	0	521

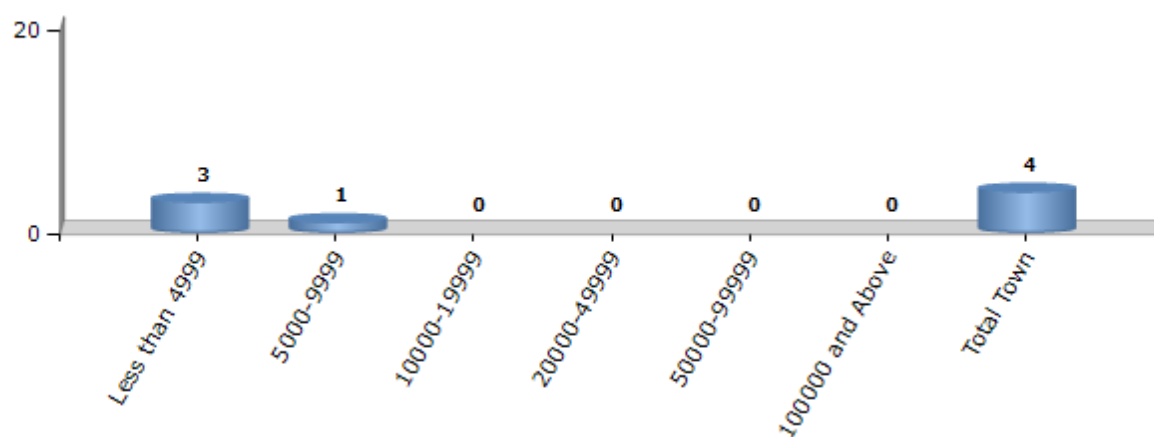
Number of Villages by Population Size - 2011



Number of Towns by Population Size - 2011

Less than 4999	5000-9999	10000-19999	20000-49999	50000-99999	100000 and Above	Total Town
3	1	0	0	0	0	4

Number of Towns by Population Size - 2011

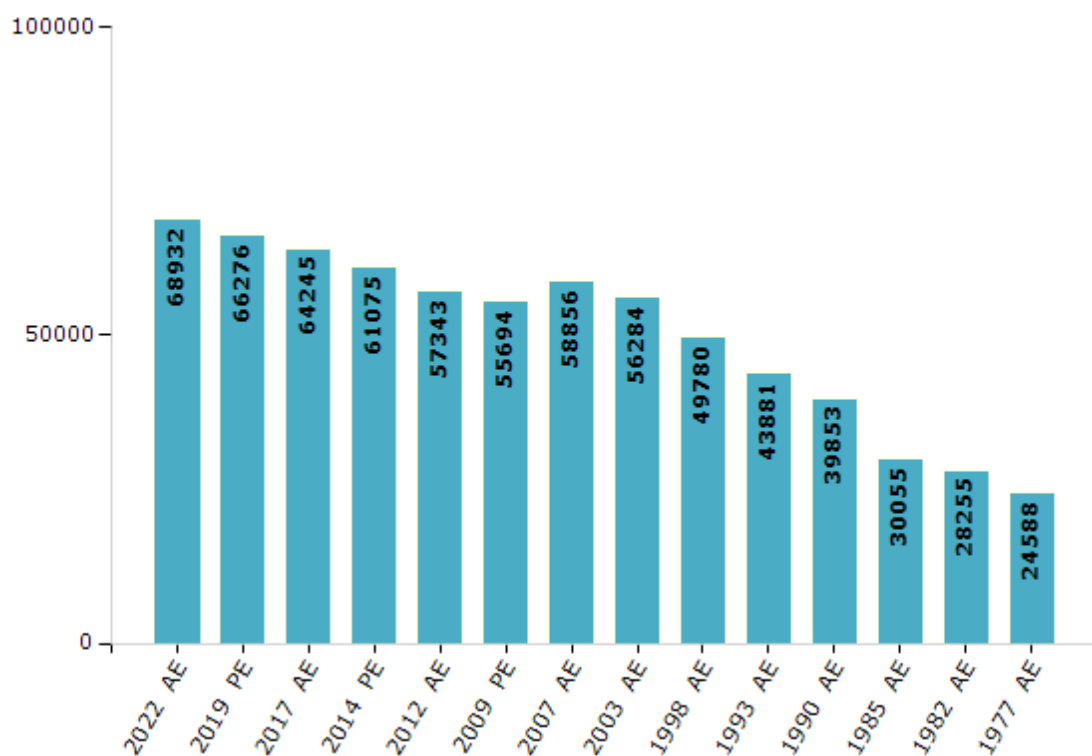


Electoral Features

Electors by Male & Female

Year	Male	Female	Others	Total	Year	Male	Female	Others	Total
2022 AE	35737	33195	0	68932	1998 AE	26624	23156	-	49780
2019 PE	34553	31723	0	66276	1993 AE	23280	20601	-	43881
2017 AE	34034	30211	0	64245	1990 AE	21436	18417	-	39853
2014 PE	32661	28414	0	61075	1985 AE	15948	14107	-	30055
2012 AE	27189	30154	0	57343	1982 AE	14856	13399	-	28255
2009 PE	29388	26306	-	55694	1977 AE	13129	11459	-	24588
2007 AE	30862	27994	-	58856	1972 AE	-	-	-	-
2004 PE	-	-	-	-	1967 AE	-	-	-	-
2003 AE	29855	26429	-	56284	1952 AE	-	-	-	-
1999 PE	-	-	-	-					

Number of Electors



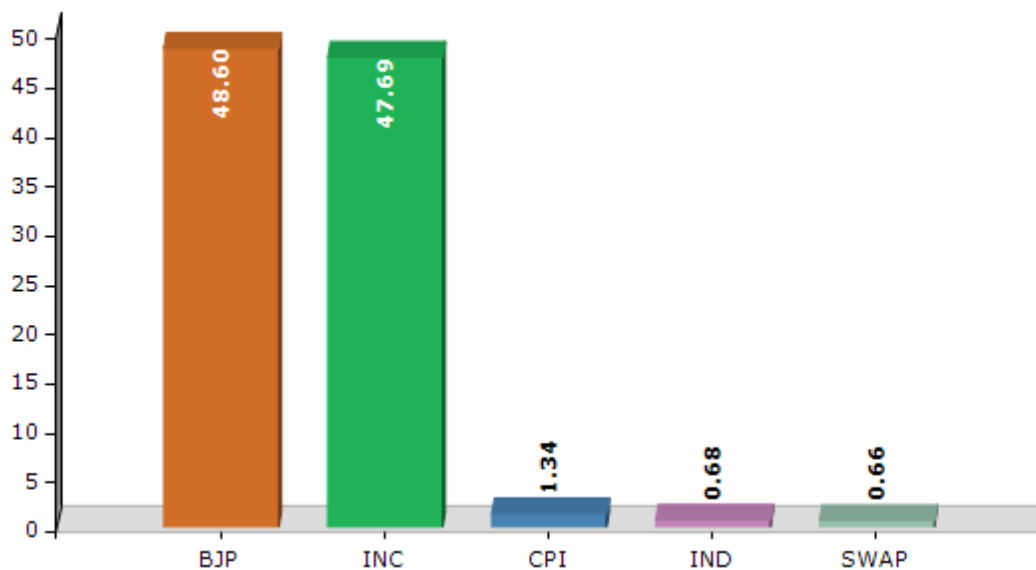
Note : AE : Assembly Election, PE : Assembly Segment of Parliamentary Election

Historical Summary Election Results

Summary Result of Assembly Election - 2017

Candidate Name	Party	Votes	Votes %
Rajiv Saizal	BJP	23656	48.6
Vinod Sultanpuri	INC	23214	47.69
Virender Kumar Kashyap	CPI	652	1.34
Rajeev Kumar Kaundal	IND	329	0.68
Keshav Kumar	SWAP	321	0.66
	NOTA	503	1.03

Votes Percentage of Top Parties - 2017



Polling Station Level Election Results

Number and Name of Polling Stations (PS) (2022)

Number of Polling Stations	Name of Polling Stations	Number of Polling Stations	Name of Polling Stations
1	Koti (Rod)	22	Chewa
2	Jabbal Jamrot	23	Barog
3	Jadli	24	Kainthri
4	Ganjhoon	25	Kumharhatti (Khali)
5	Haripur	26	Dhilllo
6	Kaniyara	26A	Dhilllo
7	Barawary 1	27	Haripur
8	Brawary 2	28	Galyana
9	Bharti	29	Sultanpur
10	Khair	30	Dagshai 1
11	Kakarhatti (Kakkadghat)	31	Dagshai 2
12	Subathu	32	Kayarad
13	Panooh Kuthala	33	Kadon
14	Subathu Chhawani 1	34	Dharpur 1
15	Subathu Chhawani 2	35	Dharpur 2
16	Rano	36	Sihardi Chamaran
17	Pansoda	37	Thade Ka Thakur Dawara
18	Deothi	38	Dhar Ki Ber 1
19	Khadyana	39	Dhar Ki Ber 2
20	Chamat Bharech	40	Kanda
21	Shangdi	41	Khadog

Contd....

Polling Station Level Election Results

Polling Station-wise Votes Secured by Overall Top Five Parties in Kasauli Assembly in Assembly Election (AE) under Shimla Parliamentary Constituency in Himachal Pradesh (2022)

Number of Polling Station	Winner - Vinod Sultanpuri (INC)	Runner-up - Rajiv Saizal (BJP)	3rd - Harmel Singh (AAP)	4th - Rajeev Kumar Kaundel (RTRYDVBHMP)	5th - Om Prakash (IND)	NOTA	Other	Total Votes Secured
35	260	192	12	8	1	3	5	481
36	348	187	13	11	3	5	4	571
37	289	157	16	19	2	0	4	487
38	294	227	24	1	3	3	2	554
39	312	146	15	4	2	2	3	484
40	398	227	3	47	0	5	4	684
41	271	144	5	21	0	2	6	449
42	400	305	7	18	0	5	4	739
43	368	214	30	16	5	3	4	640
44	188	240	3	7	7	5	2	452
45	172	208	5	85	3	5	2	480
46	366	303	14	71	17	6	4	781
47	283	207	28	192	1	4	3	718
48	227	175	10	11	0	3	6	432
49	239	100	4	12	0	3	0	358
50	531	295	31	41	3	5	11	917
51	274	191	29	25	2	2	2	525
52	200	157	81	2	1	3	1	445
53	176	83	22	0	0	2	3	286
54	198	143	2	0	0	0	1	344
55	78	173	13	0	1	7	0	272
56	204	295	51	1	1	8	1	561
57	314	292	31	0	0	2	8	647
58	249	286	30	1	2	7	5	580
59	237	148	63	0	5	1	3	457
60	232	146	21	1	0	3	2	405
61	321	407	47	10	7	3	5	800
62	242	279	31	2	1	8	2	565
63	255	292	43	4	1	5	0	600
64	382	239	28	15	2	9	4	679
65	326	241	13	12	2	10	3	607
66	188	145	6	5	2	3	0	349
67	309	138	16	5	0	1	1	470
68	95	82	10	0	0	0	0	187
69	157	118	12	2	0	2	2	293

Contd....

Polling Station Level Election Results

Winner, Runner-up and 3rd Party Position & Winning Margin According to Polling Stations in Kasauli Assembly in Assembly Election (AE) under Shimla Parliamentary Constituency in Himachal Pradesh (2022)

Polling Station Number	Winner Party	Winner Votes (%)	Runner-up Party	Runner-up Votes (%)	Winning Margin Votes (%)	Third Party	Third Party Votes (%)	Other Votes (%)
70	INC	145 (70.05)	BJP	46 (22.22)	99 (47.83)	AAP	12 (5.8)	4 (1.93)
71	INC	274 (61.99)	BJP	138 (31.22)	136 (30.77)	AAP	23 (5.2)	7 (1.58)
72	BJP	231 (49.78)	INC	135 (29.09)	96 (20.69)	RTRYDVBHMP	60 (12.93)	38 (8.19)
73	INC	201 (49.26)	BJP	174 (42.65)	27 (6.61)	RTRYDVBHMP	18 (4.41)	15 (3.68)
74	BJP	289 (43.92)	INC	242 (36.78)	47 (7.14)	RTRYDVBHMP	78 (11.85)	49 (7.45)
75	BJP	348 (50.07)	INC	296 (42.59)	52 (7.48)	RTRYDVBHMP	34 (4.89)	17 (2.45)
76	INC	148 (42.29)	BJP	139 (39.71)	9 (2.58)	RTRYDVBHMP	52 (14.86)	11 (3.14)
77	INC	392 (49.06)	BJP	356 (44.56)	36 (4.5)	AAP	23 (2.88)	28 (3.5)
78	INC	170 (56.67)	BJP	85 (28.33)	85 (28.34)	AAP	41 (13.67)	4 (1.33)
79	INC	324 (52.68)	BJP	265 (43.09)	59 (9.59)	AAP	11 (1.79)	15 (2.44)
80	INC	166 (59.5)	BJP	83 (29.75)	83 (29.75)	RTRYDVBHMP	23 (8.24)	7 (2.51)
81	INC	135 (45.15)	BJP	133 (44.48)	2 (0.67)	AAP	18 (6.02)	13 (4.35)
82	INC	155 (45.45)	BJP	143 (41.94)	12 (3.51)	AAP	23 (6.74)	20 (5.87)
83	INC	234 (55.32)	BJP	178 (42.08)	56 (13.24)	AAP	8 (1.89)	3 (0.71)
84	BJP	302 (49.11)	INC	292 (47.48)	10 (1.63)	AAP	15 (2.44)	6 (0.98)
85	INC	311 (56.65)	BJP	218 (39.71)	93 (16.94)	AAP	10 (1.82)	10 (1.82)
86	INC	166 (48.82)	BJP	152 (44.71)	14 (4.11)	RTRYDVBHMP	12 (3.53)	10 (2.94)
87	INC	183 (61.2)	BJP	93 (31.1)	90 (30.1)	RTRYDVBHMP	15 (5.02)	8 (2.68)
88	INC	129 (51.81)	BJP	95 (38.15)	34 (13.66)	AAP	15 (6.02)	10 (4.02)
89	BJP	329 (56.34)	INC	194 (33.22)	135 (23.12)	AAP	34 (5.82)	27 (4.62)
90	BJP	209 (45.43)	INC	208 (45.22)	1 (0.21)	IND (OP)	18 (3.91)	25 (5.43)
91	INC	299 (54.76)	BJP	209 (38.28)	90 (16.48)	IND (OP)	24 (4.4)	14 (2.56)
92	INC	396 (84.8)	BJP	64 (13.7)	332 (71.1)	HIMJKP	3 (0.64)	4 (0.86)
93	BJP	422 (50.97)	INC	371 (44.81)	51 (6.16)	AAP	27 (3.26)	8 (0.97)
94	INC	169 (60.57)	BJP	101 (36.2)	68 (24.37)	IND (OP)	7 (2.51)	2 (0.72)
95	BJP	308 (47.46)	INC	278 (42.84)	30 (4.62)	IND (OP)	29 (4.47)	34 (5.24)
96	INC	201 (49.88)	BJP	174 (43.18)	27 (6.7)	RTRYDVBHMP	12 (2.98)	16 (3.97)
97	INC	252 (51.53)	BJP	198 (40.49)	54 (11.04)	IND (OP)	26 (5.32)	13 (2.66)
98	INC	157 (59.92)	BJP	95 (36.26)	62 (23.66)	AAP	2 (0.76)	8 (3.05)
99	INC	179 (59.87)	BJP	111 (37.12)	68 (22.75)	RTRYDVBHMP	3 (1)	6 (2.01)
100	BJP	230 (52.27)	INC	188 (42.73)	42 (9.54)	RTRYDVBHMP	5 (1.14)	17 (3.86)
101	BJP	370 (46.95)	INC	335 (42.51)	35 (4.44)	AAP	47 (5.96)	36 (4.57)
102	INC	159 (52.3)	BJP	117 (38.49)	42 (13.81)	AAP	16 (5.26)	12 (3.95)
103	INC	297 (49.34)	BJP	238 (39.53)	59 (9.81)	AAP	30 (4.98)	37 (6.15)
104	INC	315 (47.95)	BJP	291 (44.29)	24 (3.66)	AAP	39 (5.94)	12 (1.83)

Contd....

Socio-Economic Amenities - Rural

Access to Education Facilities

Particulars	Number of Villages (% of Population)				
	Available	Not Available	If Not Available (Distance of Nearest Facility)		
			A	B	C
Govt. Primary School	169 (63)	352 (37)	342 (36)	9 (1)	0 (0)
Private Primary School	2 (4)	519 (96)	1 (0)	0 (0)	0 (0)
Govt. Middle School	65 (26)	456 (74)	386 (65)	60 (7)	4 (1)
Private Middle School	9 (7)	512 (93)	3 (0)	0 (0)	0 (0)
Govt. Secondary School	28 (16)	493 (84)	357 (64)	120 (17)	11 (1)
Private Secondary School	8 (7)	513 (93)	1 (0)	0 (0)	0 (0)
Govt. Senior Secondary School	19 (12)	502 (88)	281 (56)	193 (29)	24 (3)
Private Senior Secondary School	2 (3)	519 (97)	2 (0)	1 (0)	1 (0)
Govt. Arts and Science Degree College	1 (0)	520 (100)	6 (6)	16 (9)	368 (66)
Private Arts and Science Degree College	0 (0)	521 (100)	13 (3)	47 (5)	70 (10)
Govt. Engineering College	0 (0)	521 (100)	2 (0)	1 (0)	87 (15)
Private Engineering College	2 (0)	519 (100)	22 (4)	60 (14)	347 (66)
Govt. Medicine College	0 (0)	521 (100)	0 (0)	2 (0)	507 (98)
Private Medicine College	0 (0)	521 (100)	0 (0)	0 (0)	12 (2)
Govt. Management Institute	0 (0)	521 (100)	1 (0)	0 (0)	231 (41)
Private Management Institute	0 (0)	521 (100)	6 (1)	13 (3)	270 (55)
Govt. Polytechnic	0 (0)	521 (100)	2 (0)	10 (2)	190 (38)
Private Polytechnic	1 (0)	520 (100)	16 (3)	46 (10)	256 (47)
Govt. Vocational Training School/ITI	0 (0)	521 (100)	22 (8)	129 (29)	288 (52)
Private Vocational Training School/ITI	0 (0)	521 (100)	1 (0)	38 (5)	43 (6)
Govt. Non Formal Training Centre	0 (0)	521 (100)	8 (7)	21 (9)	489 (84)
Private Non Formal Training Centre	1 (0)	520 (100)	0 (0)	0 (0)	2 (0)
Govt. School For Disabled	0 (0)	521 (100)	0 (0)	4 (0)	327 (68)
Private School For Disabled	1 (0)	520 (100)	1 (0)	12 (3)	176 (28)
Government Others	0 (0)	521 (100)	0 (0)	0 (0)	5 (1)
Private Others	1 (0)	520 (100)	0 (0)	0 (0)	3 (0)

Note : Distance A : Less than 5 km; B : Between 5-10 km; C : 10+ km.; Source : Data Analysis is based on 2011 Census.

DISCLAIMER

The Terms of Use and Disclaimer of Datanet India Private Limited (hereinafter referred to as "Datanet") for use of this analysis report of **Kasauli Assembly Constituency (Kasauli Vidhan Sabha)** :-

1. **Assembly Factbook™** is a Registered Trade Mark owned by Datanet.
2. All the maps are sketched and graphical representation only and have not been drawn to the scale and also not to represent the actual geographical area or boundary of the unit.
3. The data for the aforesaid analysis is based on authentic sources and has been culled from the various publications of Census, CSO and NSSO for district and block level data, various central and state government departments, Central & State Elections Commissions and the concerned Returning Officers' releases, Electoral Rolls, Election results and allied publications, internal assessment, surveys, estimates and analysis. Therefore, certain adjustment of data at micro level may have been done to arrive closer to the macro data.
4. Data have been provided on an "As Is" and "As AVAILABLE" basis
5. The colours shown in the maps or diagram and charts of a particular party, alliance or AC are indicative and do not represent them.
6. This publication which includes maps, sheets, graphs and data would be the property under copyright of Datanet only. The user may use these for its internal study, analysis and research purposes. It's public display, re-selling or any commercial uses by the user are not allowed.
7. Datanet has taken due care and caution in compilation and processing of data and allied information, but does not guarantee the accuracy, adequacy or completeness of any information/analysis and will be not responsible for any errors or omissions or for the results obtained from the use of such information/analysis.
8. All the contents for the publication have been culled from various authentic sources and Datanet reasonably believes such sources to be reliable, but does not make any representations, express or implied as to the accuracy or fitness of use of such information. The information or contents of the information/analysis do not constitute advice and should not be relied upon in making (or refraining from making) any decision. Any reliance placed upon the information provided by Datanet is the sole responsibility and strictly at the user's risk.
9. In no event will Datanet be liable for any damages (including, without limitation, damages for loss of business projects, or loss of profits) arising in contract, tort or otherwise from the use of or inability to use any of its contents, or from any action taken (or refrained from being taken) as a result of using the analysis or any of its contents. Datanet its directors, owners, editors, officials, employees, distributor and agents or any associate will not be liable for any errors in the information contained or any consequences arising from the use of the contents of the provided information/analysis.
10. If any provision of these terms and conditions is held invalid or illegal or unenforceable for any reason by any court of competent jurisdiction, such provision shall be severed and the remainder of provisions of the terms and conditions shall continue in full force and effect as if the Term of Use had been executed with the invalid, illegal or unenforceable provision eliminated.
11. If there are any discrepancies in the information provided, please bring it to attention of Datanet for suitable rectification measures.

**Buy Online This Complete Book At
Indiastat Publication Book Store**

www.indiastatpublications.com

or go directly at

**[http://www.indiastatpublications.com/
Assembly_factbook/Himachal Pradesh/Shimla/ Kasauli](http://www.indiastatpublications.com/Assembly_factbook/Himachal%20Pradesh/Shimla/Kasauli)**

 **india**stat**elections**

ISBN : 978-93-5905-272-4



9 789359 052724