



Himachal Pradesh

Assembly Factbook™

Kasumpti Assembly Constituency



Key Electoral Data of Kasumpti
Assembly Constituency (Vidhan Sabha)

Himachal Pradesh
Assembly FactbookTM
Kasumpti Assembly Constituency



Kasumpti Vidhan Sabha

Editor & Director

Dr. R.K. Thukral

Research Editor

Dr. Shafeeq Rahman

Compiled, Researched and Published by Datanet India Pvt. Ltd.

D-100, 1st Floor,

Okhla Industrial Area, Phase-I,

New Delhi- 110020.

Ph.: 91-11- 43580781-84

Email : support@indiastatpublications.com

Website : www.indiastatelections.com

Online Book Store :

www.indiastatpublications.com

Report No. : AFB/HP-62-0125

ISBN : 978-93-5905-121-5

First Edition : January, 2018

Eighth Updated Edition : January, 2025

Price : Rs.11500/-

US\$ 310

© **Datanet India Pvt. Ltd.**

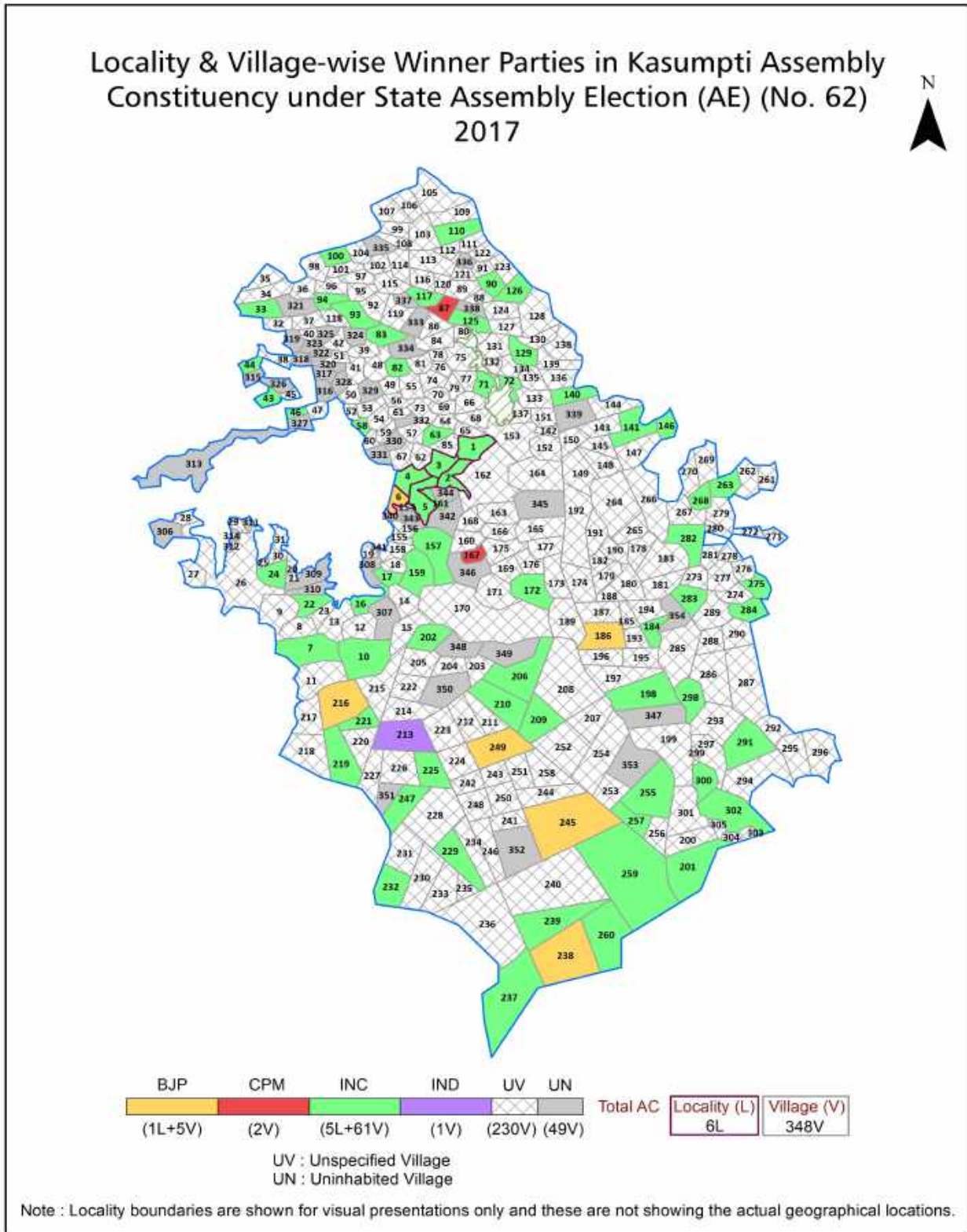
All rights reserved. No part of this book may be reproduced, stored in a retrieval system or transmitted in any form or by any means, mechanical photocopying, photographing, scanning, recording or otherwise without the prior written permission of the publisher. Please refer to Disclaimer at page no. 157 for the use of this publication.

Printed in India

Contents

No.	Particulars	Page No.
	Introduction	
1	Assembly Constituency - (Vidhan Sabha) at a Glance Features of Assembly as per Delimitation Commission of India (2008)	1-2
	Location and Political Maps	
2	Location Map Boundaries of Assembly Constituency - (Vidhan Sabha) in District Boundaries of Assembly Constituency under Parliamentary Constituency - (Lok Sabha) Locality & Village-wise Winner Parties- 2024, 2022, 2019, 2017, 2014, 2012 and 2009	3-11
	Administrative Setup (2011)	
3	District Sub-district Towns Villages Inhabited Villages Uninhabited Villages Village Panchayat Intermediate Panchayat	12-28
	Demographics (2011)	
4	Population Households Rural/Urban Population Villages by Population Size Sex Ratio (Total & 0-6 Years) Religious Population Social Population Literacy Rate	29-30
	Electoral Features	
5	Important Dates of Last Elections Held Electors by Gender Service Electors Voters Voters Turnout Polling Stations & Average Number of Electors per Polling Station Electors by Age Group Present Elected Representatives	31-36
	Historical Summary Election Results	
6	Vote Share of Major Parties Winning Margin (Number & Percentage) Polarity of Parties Summary Result of Assembly Segment of Parliamentary Elections 2024, 2019, 2014, 2009, 2004 and 1999 Summary Result of Assembly Elections 2022, 2017, 2012, 2007, 2003, 1998, 1993, 1990, 1985, 1982, 1977, 1972, 1967 and 1952	37-59
	Polling Station Level Election Results	
7	Name and Number of Polling Station 2024, 2022, 2019, 2017, 2014, 2012 and 2009 Polling Station-wise Electors, Voters & Voters Turnout 2024, 2022, 2019, 2017, 2014, 2012 and 2009 Polling Station wise Elections Results 2024, 2022, 2019, 2017, 2014, 2012 and 2009	60-137
	Share of Assembly Constituency	
8	Share of Assembly Constituency - (Vidhan Sabha) in State, District and Parliamentary Constituency - (Lok Sabha)	138
	Socio-Economic Amenities (2011)	
9	Access to Administrative Units Agricultural, Manufacturing and Industrial Commodities Demographic Indicators Education Health & Manpower Drinking Water Supply Sanitation Entertainment and Recreations Infrastructure Power Food Allocation Distribution and Marketing of Agriculture Commodities Infrastructure Transport and Road Infrastructure Communication Banking and Financial Services Land Use Irrigation Source	140-154
10	Abbreviation & Sources	155-156
11	Disclaimer	157

Location & Political Map



Administrative Setup

List of Village Panchayat & Intermediate Panchayat (Block) Name - 2011

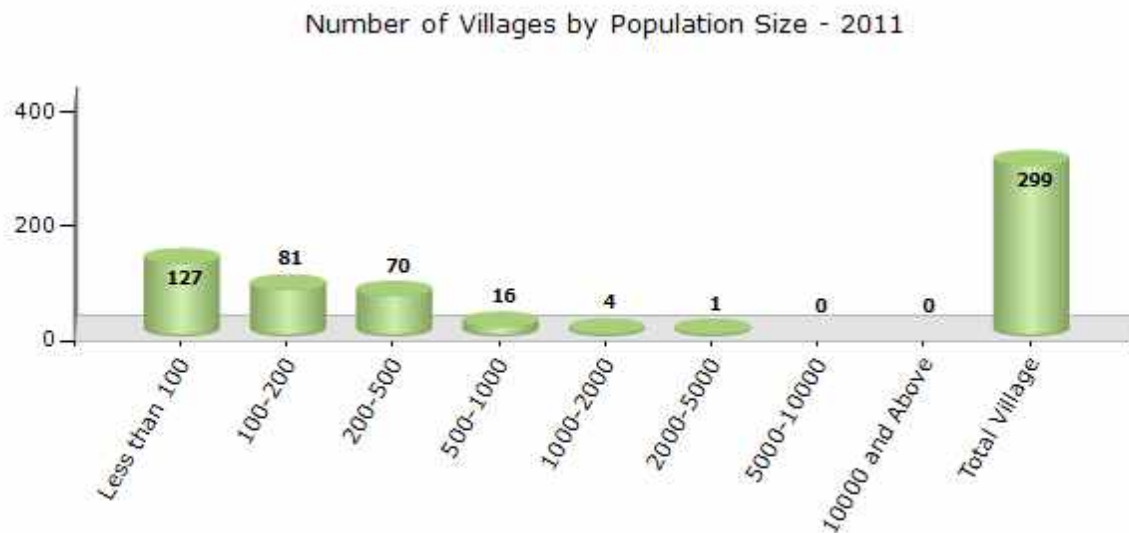
Village Name	Village Panchayat Name	Intermediate Panchayat Name
Ajdhar (347)	Dhalli	Mashobra
Anu (328)	Chedi	Mashobra
Badfar (337)	Dhalli	Mashobra
Bagna Kalan (406)	Darbhog	Mashobra
Bagna Khurd (407)	Darbhog	Mashobra
Bagoloo (37)	Dummi	Basantpur
Bagora Khurd (38)	Dummi	Basantpur
Bagthal (253)	Mashobra	Mashobra
Bahani (382)	Cheog	Theog
Bahli Khanlog (141)	Bhadech	Mashobra
Baldehan (293)	Baldehan	Basantpur
Balhari (214)	Dharech	Theog
Balog (181)	Balog	Mashobra
Bani (359)	Bani	Theog
Banreri (276)	Naldehra	Basantpur
Banreru (335)	Dhalli	Mashobra
Barah (350)	Chamyana	Mashobra
Barhai (102)	Anandpur	Mashobra
Barmu (333)	Dhalli	Mashobra
Barog (286)	Naldehra	Basantpur
Bauntalu (306)	-	Mashobra
Bekhalti (353)	Majhar	Theog
Bhala Gaon (164)	Janedghat	Mashobra
Bhalawag (158)	Janedghat	Mashobra
Bhalog (100)	Anandpur	Mashobra
Bharandi (153)	Koti	Mashobra
Bharech (280)	Naldehra	Basantpur
Bhargari (210)	Satog	Theog
Bharhech (139)	Bhadech	Mashobra

Contd....

Demographics

Number of Villages by Population Size - 2011

Less than 100	100-200	200-500	500-1000	1000-2000	2000-5000	5000-10000	10000 and Above	Total Village
127	81	70	16	4	1	0	0	299

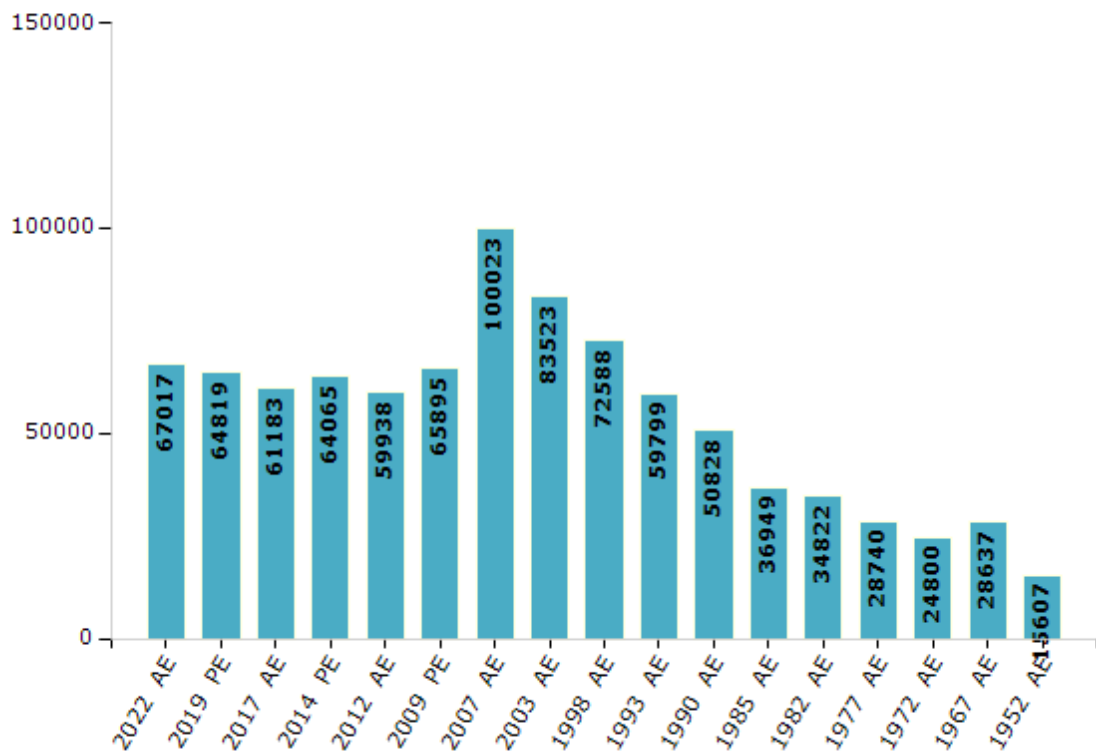


Electoral Features

Electors by Male & Female

Year	Male	Female	Others	Total	Year	Male	Female	Others	Total
2022 AE	34678	32339	0	67017	1998 AE	40622	31966	-	72588
2019 PE	33841	30978	0	64819	1993 AE	33080	26719	-	59799
2017 AE	32171	29012	0	61183	1990 AE	28086	22742	-	50828
2014 PE	33833	30232	0	64065	1985 AE	20450	16499	-	36949
2012 AE	31775	28163	0	59938	1982 AE	19201	15621	-	34822
2009 PE	35310	30585	-	65895	1977 AE	15532	13208	-	28740
2007 AE	53360	46663	-	100023	1972 AE	13154	11646	-	24800
2004 PE	-	-	-	-	1967 AE	-	-	-	28637
2003 AE	45473	38050	-	83523	1952 AE	-	-	-	15607
1999 PE	-	-	-	-					

Number of Electors



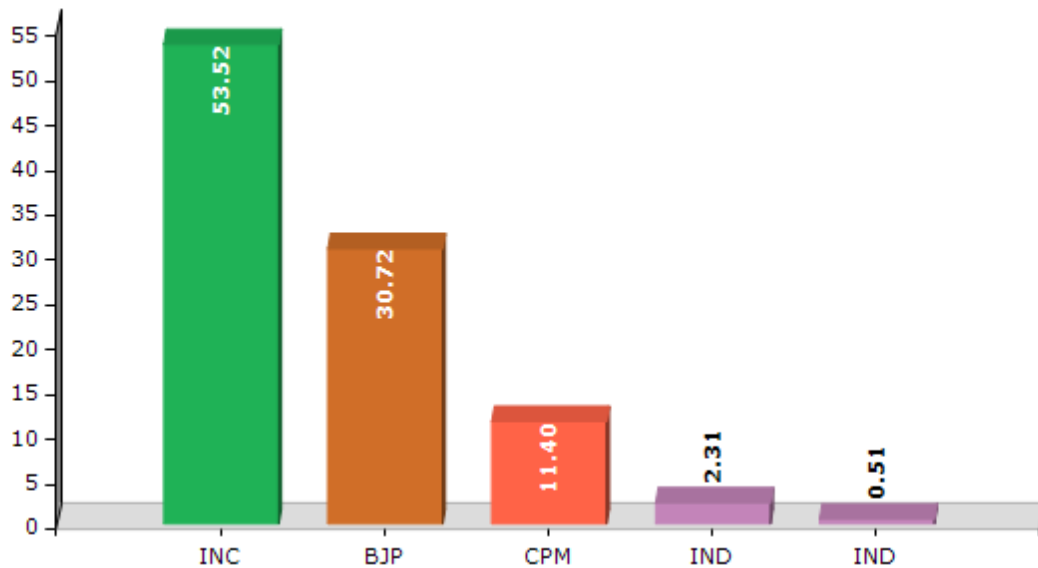
Note : AE : Assembly Election, PE : Assembly Segment of Parliamentary Election

Historical Summary Election Results

Summary Result of Assembly Election - 2017

Candidate Name	Party	Votes	Votes %
Anirudh Singh	INC	22061	53.52
Vijay Jyoti	BJP	12664	30.72
Kuldip Singh Tanwar	CPM	4698	11.4
Madan Mohan	IND	954	2.31
Inder Singh	IND	212	0.51
Ramesh Kumar	BSP	154	0.37
Dev Raj Bhardwaj	IND	71	0.17
	NOTA	404	0.98

Votes Percentage of Top Parties - 2017



Polling Station Level Election Results

Number and Name of Polling Stations (PS) (2022)

Number of Polling Stations	Name of Polling Stations	Number of Polling Stations	Name of Polling Stations
1	Shahal	22	Gharaich
2	Tood	23	Moolkoti
3	Dumi	24	Kufri Junga
4	Jagailaru	25	Makhdol
5	Kanda	26	Bhekhalti
6	Naldehra	27	Bani
7	Tikkar	28	Gadewag
8	Saunthal	29	Dehna
9	Baldeyan	30	Domehar 1
10	Sol	31	Domehar 2
11	Dhagog	32	Shilli Mehla
12	Ghatti	33	Podal (Dharaich)
13	Pagog	34	Satog
14	Barmu	35	Jugger (Khagna)
15	Kyar	36	Kataiya Majhar
16	Dhalli	37	Darbhog
17	Mashobra 1	38	Nala
18	Mashobra 2	39	Jatol
19	Sohawal	40	Patgaihar
20	Gumma	41	Catchment Area (Churatnala)
21	Bagthal	42	Maloothi

Contd....

Polling Station Level Election Results

Polling Station-wise Votes Secured by Overall Top Five Parties in Kasumpti Assembly in Assembly Election (AE) under Shimla Parliamentary Constituency in Himachal Pradesh (2022)

Number of Polling Station	Winner - Anirudh Singh (INC)	Runner-up - Suresh Bhardwaj (BJP)	3rd - Kuldip Singh Tanwar (CPI(M))	4th - Dr. Rajesh Chanana (AAP)	5th - Kameshwar (BSP)	NOTA	Other	Total Votes Secured
36	167	67	10	1	2	1	2	250
37	337	214	126	4	1	7	1	690
38	225	98	19	1	2	1	0	346
39	342	243	85	2	7	1	2	682
40	250	155	67	0	1	2	1	476
41	151	100	3	2	0	1	0	257
42	87	155	14	1	0	0	0	257
43	200	150	4	5	1	4	1	365
44	158	166	13	2	2	1	0	342
45	143	128	4	1	0	7	0	283
46	131	134	2	2	0	2	0	271
47	138	196	5	4	1	2	0	346
48	178	139	17	1	2	2	3	342
49	136	137	2	2	1	1	0	279
50	193	195	24	2	2	5	0	421
51	113	93	9	0	1	1	0	217
52	124	101	10	1	0	4	0	240
53	148	82	32	7	0	2	1	272
54	43	51	47	2	0	1	0	144
55	75	45	42	0	0	0	1	163
56	361	281	42	10	1	6	1	702
57	172	53	23	0	0	1	0	249
58	267	168	5	3	0	2	0	445
59	160	58	10	6	0	4	1	239
60	198	98	1	5	0	2	0	304
61	305	160	31	1	2	2	0	501
62	176	215	3	1	1	3	0	399
63	167	61	2	0	0	1	0	231
64	102	104	5	3	2	1	2	219
65	166	212	14	1	1	2	0	396
66	225	145	3	3	2	6	0	384
67	176	119	8	3	1	1	0	308
68	223	187	2	6	1	2	4	425
69	395	185	7	3	2	9	0	601
70	350	225	9	2	0	7	2	595

Contd....

Polling Station Level Election Results

Winner, Runner-up and 3rd Party Position & Winning Margin According to Polling Stations in Kasumpti Assembly in Assembly Election (AE) under Shimla Parliamentary Constituency in Himachal Pradesh (2022)

Polling Station Number	Winner Party	Winner Votes (%)	Runner-up Party	Runner-up Votes (%)	Winning Margin Votes (%)	Third Party	Third Party Votes (%)	Other Votes (%)
71	INC	185 (55.06)	BJP	134 (39.88)	51 (15.18)	CPI(M)	9 (2.68)	8 (2.38)
72	INC	217 (47.9)	BJP	202 (44.59)	15 (3.31)	AAP	12 (2.65)	22 (4.86)
73	BJP	277 (51.11)	INC	246 (45.39)	31 (5.72)	CPI(M)	8 (1.48)	11 (2.03)
74	INC	292 (50.43)	BJP	255 (44.04)	37 (6.39)	AAP	13 (2.25)	19 (3.28)
75	INC	256 (50.49)	BJP	212 (41.81)	44 (8.68)	AAP	17 (3.35)	22 (4.34)
76	BJP	174 (51.79)	INC	132 (39.29)	42 (12.5)	AAP	12 (3.57)	18 (5.36)
77	BJP	305 (50.58)	INC	262 (43.45)	43 (7.13)	CPI(M)	17 (2.82)	19 (3.15)
78	INC	282 (59.62)	BJP	158 (33.4)	124 (26.22)	BSP	13 (2.75)	20 (4.23)
79	INC	432 (60.08)	BJP	256 (35.61)	176 (24.47)	CPI(M)	18 (2.5)	13 (1.81)
80	INC	404 (59.06)	BJP	208 (30.41)	196 (28.65)	CPI(M)	53 (7.75)	19 (2.78)
81	INC	431 (62.65)	BJP	218 (31.69)	213 (30.96)	CPI(M)	30 (4.36)	9 (1.31)
82	INC	204 (50.5)	BJP	186 (46.04)	18 (4.46)	CPI(M)	6 (1.49)	8 (1.98)
83	INC	301 (59.72)	BJP	159 (31.55)	142 (28.17)	CPI(M)	35 (6.94)	9 (1.79)
84	INC	147 (59.51)	BJP	93 (37.65)	54 (21.86)	AAP	3 (1.21)	4 (1.62)
85	BJP	232 (49.79)	INC	223 (47.85)	9 (1.94)	AAP	4 (0.86)	7 (1.5)
86	INC	140 (50.36)	BJP	73 (26.26)	67 (24.1)	CPI(M)	63 (22.66)	2 (0.72)
87	INC	396 (57.73)	BJP	270 (39.36)	126 (18.37)	CPI(M)	6 (0.87)	14 (2.04)
88	INC	250 (49.12)	BJP	178 (34.97)	72 (14.15)	CPI(M)	67 (13.16)	14 (2.75)
89	INC	219 (44.15)	BJP	186 (37.5)	33 (6.65)	CPI(M)	82 (16.53)	9 (1.81)
90	BJP	102 (45.13)	INC	97 (42.92)	5 (2.21)	CPI(M)	21 (9.29)	6 (2.65)
91	INC	284 (56.13)	BJP	201 (39.72)	83 (16.41)	CPI(M)	12 (2.37)	9 (1.78)
92	INC	284 (63.96)	BJP	142 (31.98)	142 (31.98)	CPI(M)	10 (2.25)	8 (1.8)
93	INC	199 (54.37)	BJP	155 (42.35)	44 (12.02)	CPI(M)	9 (2.46)	3 (0.82)
94	INC	202 (58.72)	BJP	121 (35.17)	81 (23.55)	CPI(M)	12 (3.49)	9 (2.62)
95	INC	136 (49.1)	BJP	129 (46.57)	7 (2.53)	CPI(M)	7 (2.53)	5 (1.81)
96	BJP	66 (50.77)	INC	56 (43.08)	10 (7.69)	CPI(M)	8 (6.15)	0 (0)
97	INC	330 (52.55)	BJP	265 (42.2)	65 (10.35)	CPI(M)	14 (2.23)	19 (3.03)
98	INC	163 (67.92)	BJP	66 (27.5)	97 (40.42)	RTRYDVBHMP	5 (2.08)	6 (2.5)
99	INC	218 (45.51)	BJP	169 (35.28)	49 (10.23)	CPI(M)	89 (18.58)	3 (0.63)
100	INC	140 (59.83)	BJP	86 (36.75)	54 (23.08)	CPI(M)	5 (2.14)	3 (1.28)
101	INC	199 (53.07)	BJP	136 (36.27)	63 (16.8)	CPI(M)	25 (6.67)	15 (4)
102	BJP	319 (48.93)	INC	291 (44.63)	28 (4.3)	CPI(M)	24 (3.68)	18 (2.76)
103	INC	340 (73.12)	BJP	89 (19.14)	251 (53.98)	CPI(M)	27 (5.81)	9 (1.94)
104	INC	180 (61.86)	BJP	59 (20.27)	121 (41.59)	CPI(M)	48 (16.49)	4 (1.37)
105	INC	119 (44.74)	BJP	117 (43.98)	2 (0.76)	CPI(M)	29 (10.9)	1 (0.38)

Contd....

Socio-Economic Amenities - Rural

Access to Education Facilities

Particulars	Number of Villages (% of Population)				
	Available	Not Available	If Not Available (Distance of Nearest Facility)		
			A	B	C
Govt. Primary School	155 (78)	144 (22)	137 (21)	3 (0)	1 (0)
Private Primary School	1 (1)	298 (99)	3 (0)	0 (0)	0 (0)
Govt. Middle School	67 (39)	232 (61)	176 (49)	41 (9)	6 (1)
Private Middle School	5 (3)	294 (97)	4 (1)	1 (0)	0 (0)
Govt. Secondary School	39 (23)	260 (77)	156 (54)	87 (19)	13 (3)
Private Secondary School	4 (2)	295 (98)	1 (0)	0 (0)	0 (0)
Govt. Senior Secondary School	19 (13)	280 (87)	131 (50)	107 (28)	40 (9)
Private Senior Secondary School	1 (0)	298 (100)	1 (0)	0 (0)	0 (0)
Govt. Arts and Science Degree College	0 (0)	299 (100)	12 (11)	50 (21)	237 (69)
Private Arts and Science Degree College	0 (0)	299 (100)	0 (0)	0 (0)	0 (0)
Govt. Engineering College	0 (0)	299 (100)	0 (0)	0 (0)	2 (0)
Private Engineering College	0 (0)	299 (100)	0 (0)	5 (1)	292 (99)
Govt. Medicine College	0 (0)	299 (100)	11 (11)	35 (18)	253 (71)
Private Medicine College	0 (0)	299 (100)	0 (0)	0 (0)	0 (0)
Govt. Management Institute	0 (0)	299 (100)	11 (11)	35 (18)	253 (71)
Private Management Institute	0 (0)	299 (100)	0 (0)	0 (0)	0 (0)
Govt. Polytechnic	0 (0)	299 (100)	0 (0)	1 (1)	291 (96)
Private Polytechnic	0 (0)	299 (100)	0 (0)	0 (0)	7 (3)
Govt. Vocational Training School/ITI	2 (1)	297 (99)	20 (15)	59 (23)	218 (61)
Private Vocational Training School/ITI	0 (0)	299 (100)	0 (0)	0 (0)	0 (0)
Govt. Non Formal Training Centre	0 (0)	299 (100)	15 (12)	48 (20)	236 (68)
Private Non Formal Training Centre	0 (0)	299 (100)	0 (0)	0 (0)	0 (0)
Govt. School For Disabled	0 (0)	299 (100)	13 (11)	35 (19)	251 (70)
Private School For Disabled	0 (0)	299 (100)	0 (0)	0 (0)	0 (0)
Government Others	0 (0)	299 (100)	0 (0)	0 (0)	0 (0)
Private Others	0 (0)	299 (100)	0 (0)	0 (0)	0 (0)

Note : Distance A : Less than 5 km; B : Between 5-10 km; C : 10+ km.; Source : Data Analysis is based on 2011 Census.

DISCLAIMER

The Terms of Use and Disclaimer of Datanet India Private Limited (hereinafter referred to as "Datanet") for use of this analysis report of **Kasumpti Assembly Constituency (Kasumpti Vidhan Sabha)** :-

1. **Assembly Factbook™** is a Registered Trade Mark owned by Datanet.
2. All the maps are sketched and graphical representation only and have not been drawn to the scale and also not to represent the actual geographical area or boundary of the unit.
3. The data for the aforesaid analysis is based on authentic sources and has been culled from the various publications of Census, CSO and NSSO for district and block level data, various central and state government departments, Central & State Elections Commissions and the concerned Returning Officers' releases, Electoral Rolls, Election results and allied publications, internal assessment, surveys, estimates and analysis. Therefore, certain adjustment of data at micro level may have been done to arrive closer to the macro data.
4. Data have been provided on an "As Is" and "As AVAILABLE" basis
5. The colours shown in the maps or diagram and charts of a particular party, alliance or AC are indicative and do not represent them.
6. This publication which includes maps, sheets, graphs and data would be the property under copyright of Datanet only. The user may use these for its internal study, analysis and research purposes. It's public display, re-selling or any commercial uses by the user are not allowed.
7. Datanet has taken due care and caution in compilation and processing of data and allied information, but does not guarantee the accuracy, adequacy or completeness of any information/analysis and will be not responsible for any errors or omissions or for the results obtained from the use of such information/analysis.
8. All the contents for the publication have been culled from various authentic sources and Datanet reasonably believes such sources to be reliable, but does not make any representations, express or implied as to the accuracy or fitness of use of such information. The information or contents of the information/analysis do not constitute advice and should not be relied upon in making (or refraining from making) any decision. Any reliance placed upon the information provided by Datanet is the sole responsibility and strictly at the user's risk.
9. In no event will Datanet be liable for any damages (including, without limitation, damages for loss of business projects, or loss of profits) arising in contract, tort or otherwise from the use of or inability to use any of its contents, or from any action taken (or refrained from being taken) as a result of using the analysis or any of its contents. Datanet its directors, owners, editors, officials, employees, distributor and agents or any associate will not be liable for any errors in the information contained or any consequences arising from the use of the contents of the provided information/analysis.
10. If any provision of these terms and conditions is held invalid or illegal or unenforceable for any reason by any court of competent jurisdiction, such provision shall be severed and the remainder of provisions of the terms and conditions shall continue in full force and effect as if the Term of Use had been executed with the invalid, illegal or unenforceable provision eliminated.
11. If there are any discrepancies in the information provided, please bring it to attention of Datanet for suitable rectification measures.

**Buy Online This Complete Book At
Datanet India eBooks Store**

www.indiastatpublications.com

or go directly at

[http://www.indiastatpublications.com/
Assembly_factbook/Himachal Pradesh/Shimla/ Kasumpti](http://www.indiastatpublications.com/Assembly_factbook/Himachal%20Pradesh/Shimla/Kasumpti)

 **indiastat**elections

ISBN : 978-93-5905-121-5



9 789359 051215