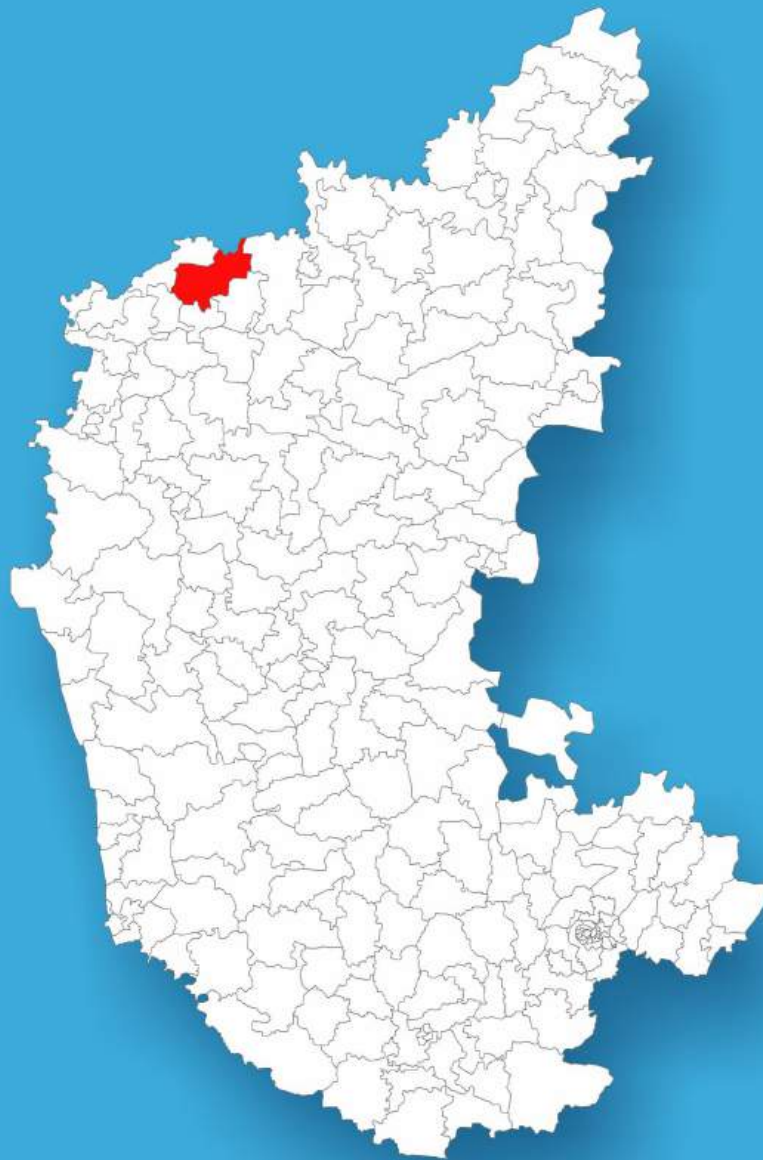




Karnataka

# Assembly Factbook™

Athni Assembly Constituency

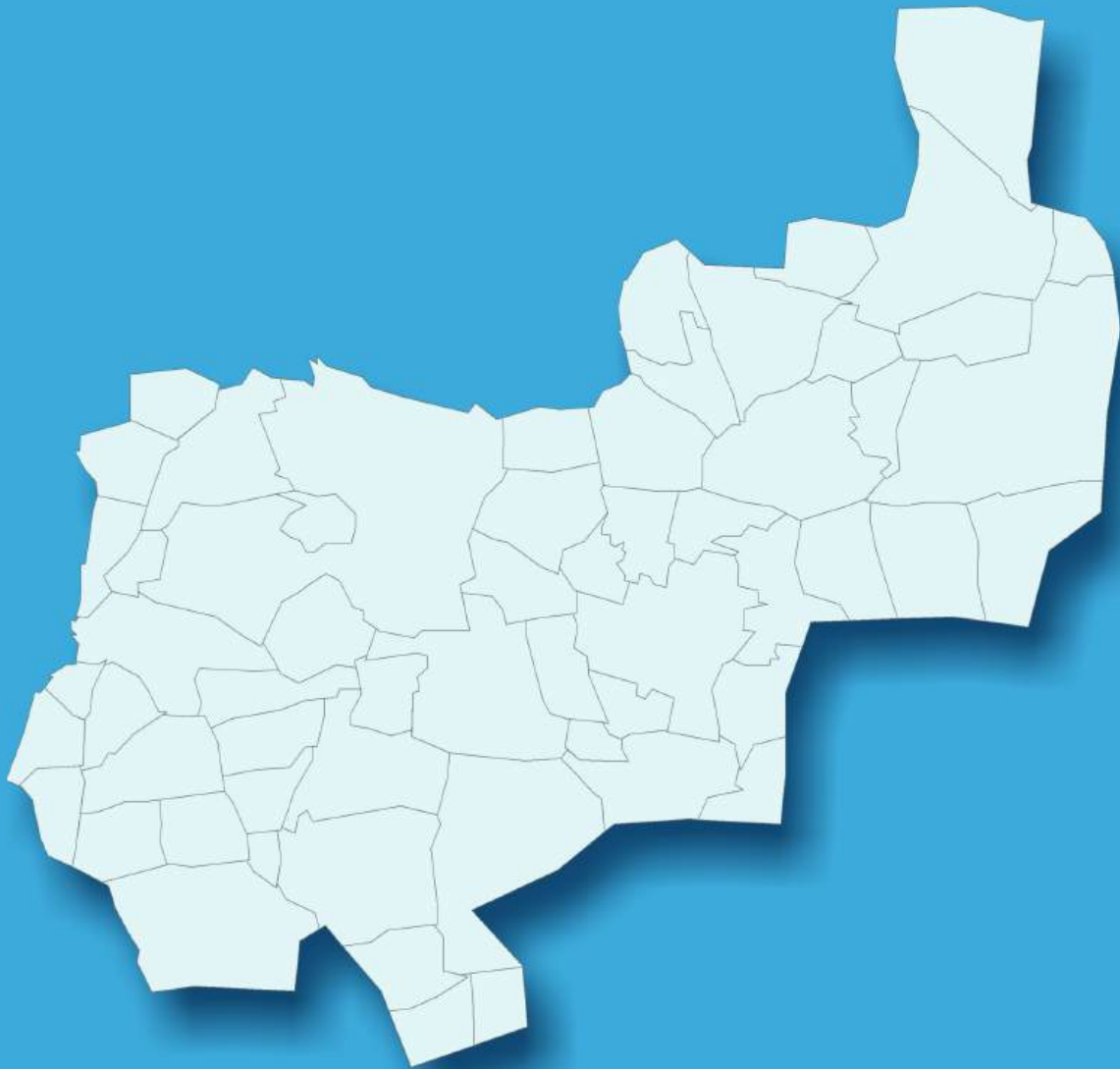


Key Electoral Data of Athni  
Assembly Constituency (Vidhan Sabha)

Karnataka

# **Assembly Factbook™**

Athni Assembly Constituency



Athni Vidhan Sabha

**Editor & Director**

Dr. R.K. Thukral

**Research Editor**

Dr. Shafeeq Rahman

**Compiled, Researched and Published by  
Datanet India Pvt. Ltd.**

D-100, 1st Floor,

Okhla Industrial Area, Phase-I,

New Delhi- 110020.

Ph.: 91-11- 43580781-84

Email : support@indiastatpublications.com

Website : <http://www.indiastatelections.com>

**Online Book Store :**

[www.indiastatpublications.com](http://www.indiastatpublications.com)

**Report No. :** AFB/KA-003-0125

**ISBN :** 978-93-5802-020-5

**First Edition :** January, 2018

**Eighth Updated Edition :** January, 2025

**Price :** Rs.11500/-

US\$ 310

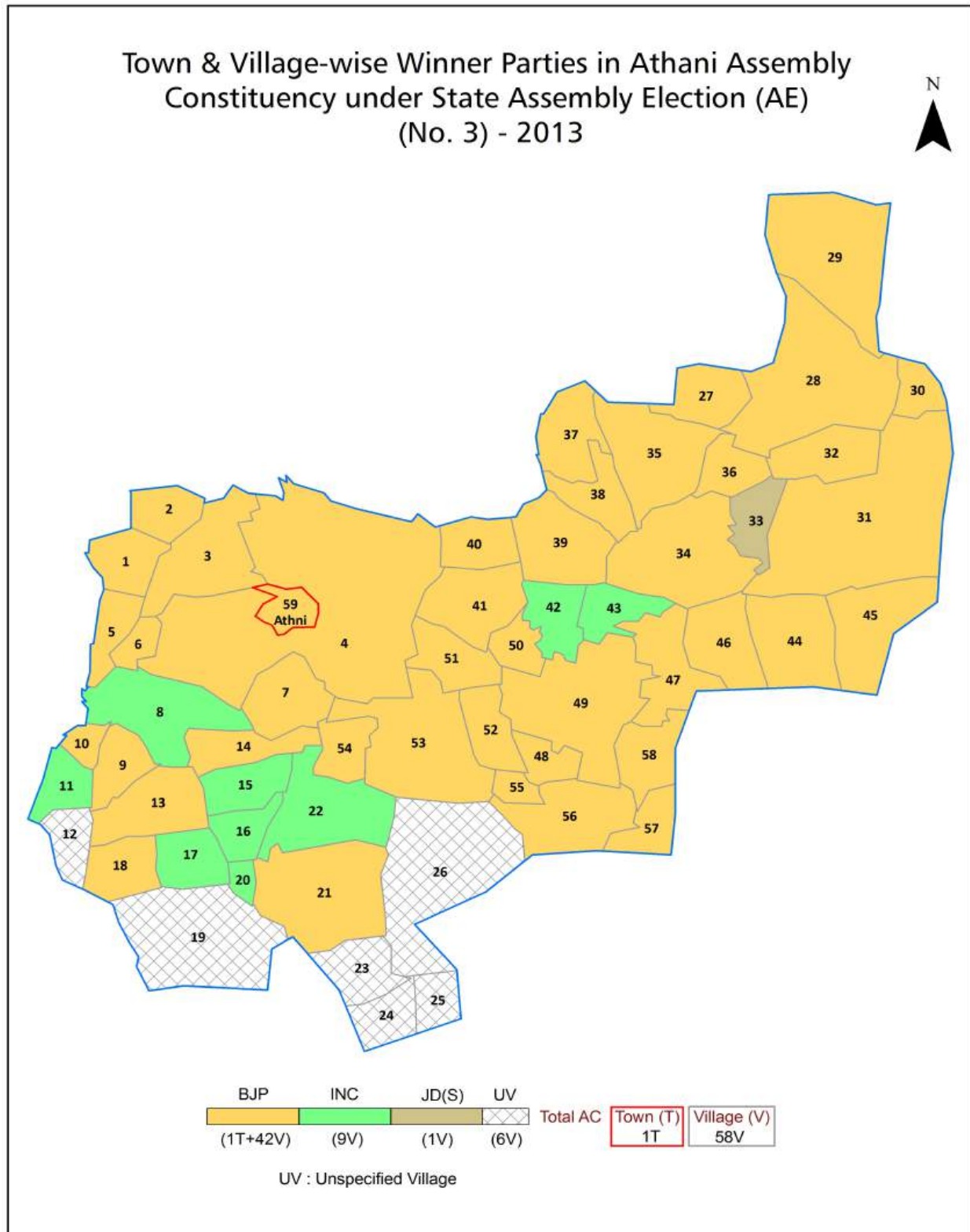
**© Datanet India Pvt. Ltd.**

All rights reserved. No part of this book may be reproduced, stored in a retrieval system or transmitted in any form or by any means, mechanical photocopying, photographing, scanning, recording or otherwise without the prior written permission of the publisher. Please refer to Disclaimer at page no. 218 for the use of this publication.

Printed in India

No.	Particulars	Page No.
	<b>Introduction</b>	
1	Assembly Constituency - (Vidhan Sabha) at a Glance   Features of Assembly as per Delimitation Commission of India (2008)	1-2
	<b>Location and Political Maps</b>	
2	Location Map   Boundaries of Assembly Constituency - (Vidhan Sabha) in District   Boundaries of Assembly Constituency under Parliamentary Constituency - (Lok Sabha)   Town & Village-wise Winner Parties- 2024, 2023, 2019, 2018, 2014, 2013 and 2009	3-11
	<b>Administrative Setup (2011)</b>	
3	District   Sub-district   Towns   Villages   Inhabited Villages   Uninhabited Villages   Village Panchayat   Intermediate Panchayat	12-14
	<b>Demographics (2011)</b>	
4	Population   Households   Rural/Urban Population   Towns and Villages by Population Size   Sex Ratio (Total & 0-6 Years)   Religious Population   Social Population   Literacy Rate	15-16
	<b>Electoral Features</b>	
5	Important Dates of Last Elections Held   Electors by Gender   Service Electors   Voters   Voters Turnout   Polling Stations & Average Number of Electors per Polling Station   Electors by Age Group   Present Elected Representatives	17-22
	<b>Historical Summary Election Results</b>	
6	Vote Share of Major Parties   Winning Margin (Number & Percentage)   Polarity of Parties   Summary Result of Assembly Segment of Parliamentary Elections 2024, 2019, 2014, 2009, 2004 and 1999   Summary Result of Assembly Elections 2023, 2018, 2013, 2008, 2004, 1999, 1994, 1989, 1985, 1983, 1978, 1972, 1967, 1962 and 1957	23-46
	<b>Polling Station Level Election Results</b>	
7	Name and Number of Polling Station 2024, 2023, 2019, 2018, 2014, 2013 and 2009   Polling Station-wise Electors, Voters & Voters Turnout 2024, 2023, 2019, 2018, 2014, 2013 and 2009   Polling Station wise Elections Results 2024, 2023, 2019, 2018, 2014, 2013 and 2009	47-198
	<b>Share of Assembly Constituency</b>	
8	Share of Assembly Constituency - (Vidhan Sabha) in State, District and Parliamentary Constituency - (Lok Sabha)	199
	<b>Socio-Economic Amenities (2011)</b>	
9	Access to Administrative Units   Agricultural, Manufacturing and Industrial Commodities   Demographic Indicators   Education   Health & Manpower   Drinking Water Supply   Sanitation   Entertainment and Recreations Infrastructure   Power   Food Allocation Distribution and Marketing of Agriculture Commodities Infrastructure   Transport and Road Infrastructure   Communication   Banking and Financial Services   Land Use   Irrigation Source	201-215
10	<b>Abbreviation &amp; Sources</b>	216-217
11	<b>Disclaimer</b>	218

## Location & Political Map



## Administrative Setup

### List of Village Panchayat & Intermediate Panchayat (Block) Name - 2011

Village Name	Village Panchayat Name	Intermediate Panchayat Name
Adahalli	Adahalli	Athni
Adalatti	Adahalli	Athni
Aigali	Aigali	Athni
Aratal	Aratal	Athni
Athani (Rural) (Part)	Athani (Rural)	Athni
Avarkhod	Naganur P K	Athni
Badachi	Katageri	Athni
Badagi	Aratal	Athni
Balawad	Shirahatti	Athni
Bannur	Kakamari	Athni
Buralatti	Kokatnur	Athni
Chikkud	Saptasagar	Athni
Darur	Darur	Athni
Desairatti	Kokatnur	Athni
Devaradderahatti	Athani (Rural)	Athni
Dhabadhabahatti	Kokatnur	Athni
Dodwad	Naganur P K	Athni
Fadatarawadi	Aigali	Athni
Ghatanatti	Nandagaon	Athni
Halalli	Aratal	Athni
Halyal	Halyal	Athni
Hulagabali	Hulagabali	Athni
Janawad	Mahishwadgi	Athni
Junjarwad	Junjarwad	Athni
Kakamari	Kakamari	Athni
Kannal	Kakamari	Athni
Katageri	Katageri	Athni
Keskaradaddi	Kohalli	Athni
Khavatkoppa	Sankaratti	Athni

Contd....

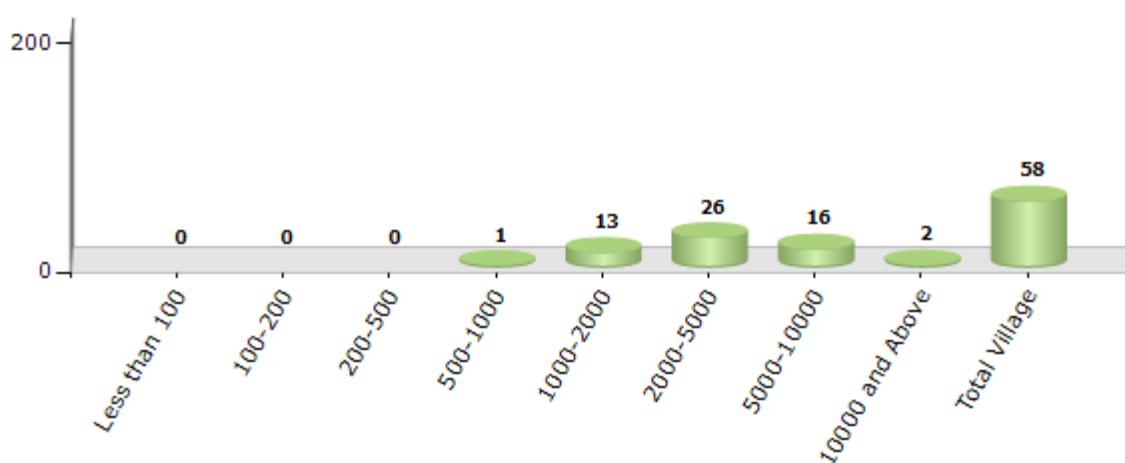


## Demographic

### Number of Villages by Population Size - 2011

Less than 100	100-200	200-500	500-1000	1000-2000	2000-5000	5000-10000	10000 and Above	Total Village
0	0	0	1	13	26	16	2	58

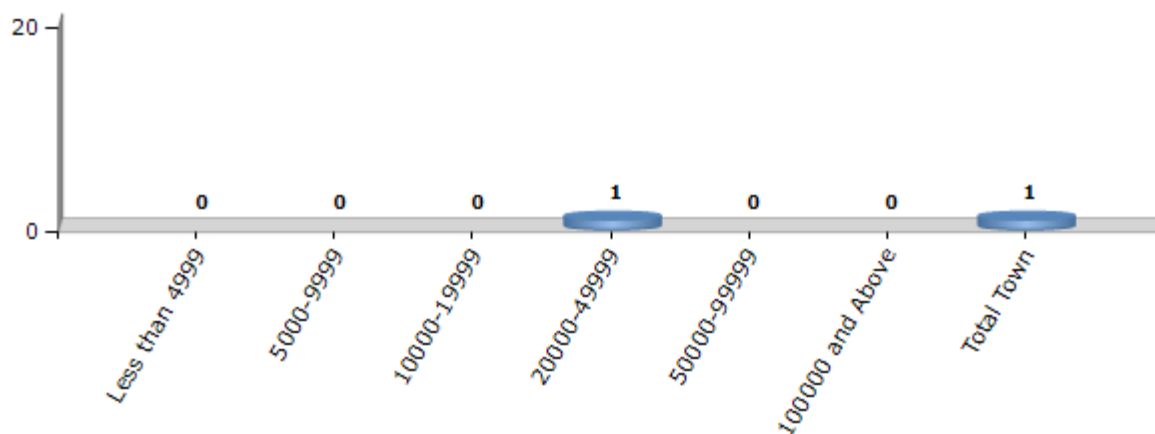
Number of Villages by Population Size - 2011



### Number of Towns by Population Size - 2011

Less than 4999	5000-9999	10000-19999	20000-49999	50000-99999	100000 and Above	Total Town
0	0	0	1	0	0	1

Number of Towns by Population Size - 2011

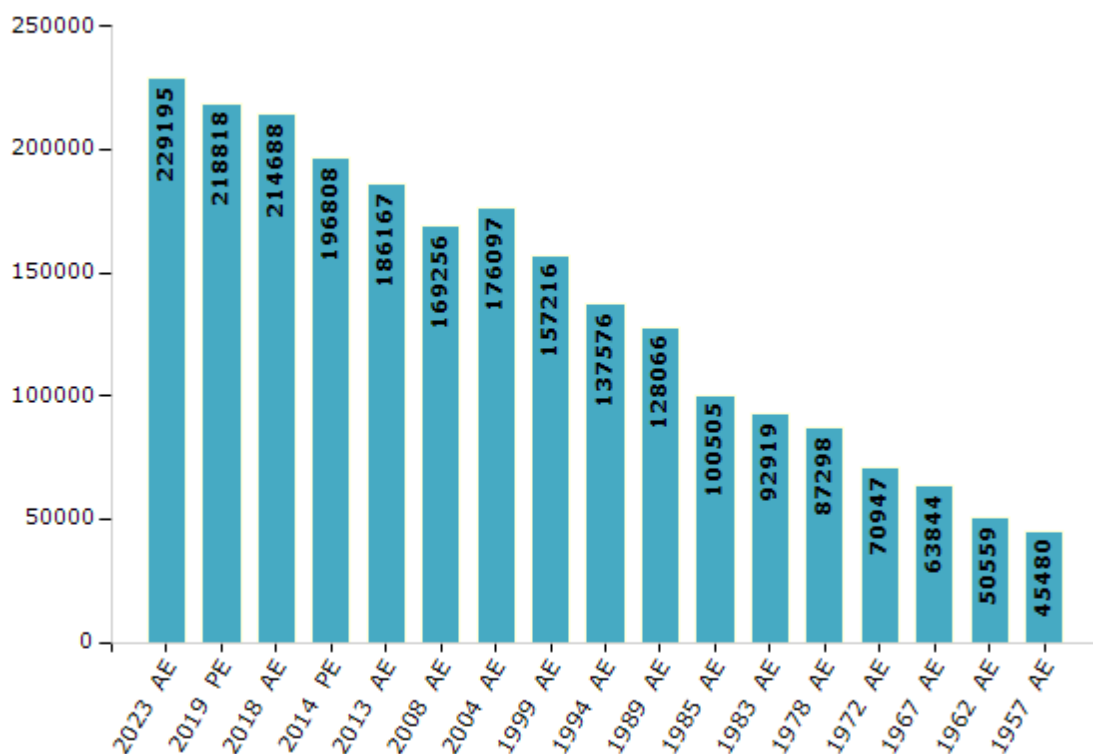


## Electoral Features

### Electors by Male & Female

Year	Male	Female	Others	Total	Year	Male	Female	Others	Total
2023 AE	117671	111520	4	229195	1999 AE	80634	76582	-	157216
2019 PE	113077	105739	2	218818	1994 AE	70124	67452	-	137576
2018 AE	111195	103493	0	214688	1989 AE	66044	62022	-	128066
2014 PE	102534	94267	7	196808	1985 AE	50931	49574	-	100505
2013 AE	97616	88551	0	186167	1983 AE	47098	45821	-	92919
2009 PE	-	-	-	-	1978 AE	44698	42600	-	87298
2008 AE	87605	81651	-	169256	1972 AE	36223	34724	-	70947
2004 PE	-	-	-	-	1967 AE	-	-	-	63844
2004 AE	89999	86098	-	176097	1962 AE	-	-	-	50559
1999 PE	-	-	-	-	1957 AE	-	-	-	45480

Number of Electors



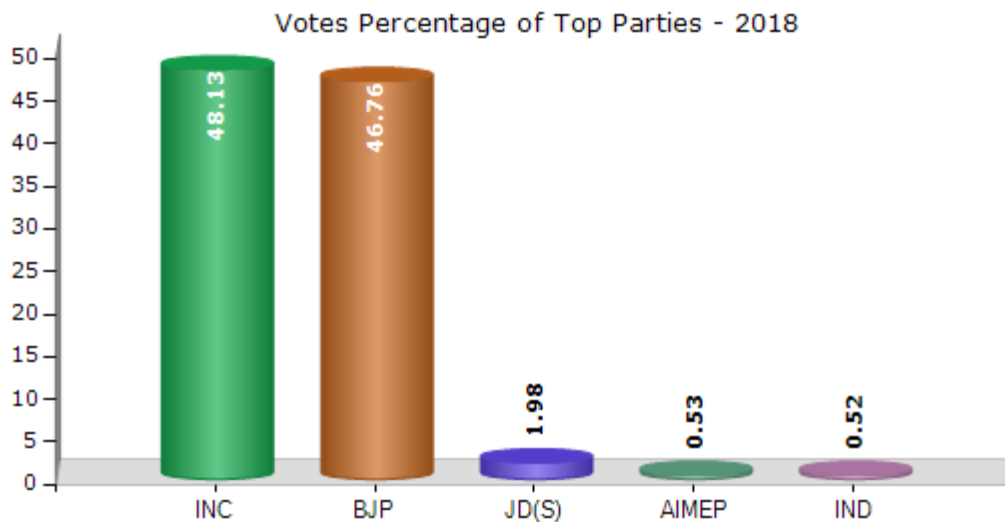
**Note :** AE : Assembly Election, PE : Assembly Segment of Parliamentary Election



## Historical Summary Election Results

### Summary Result of Assembly Election - 2018

Candidate Name	Party	Votes	Votes %
Mahesh Iranagouda Kumathalli	INC	82094	48.13
Laxman Sangappa Savadi	BJP	79763	46.76
Girish Kedareppa Butali	JD(S)	3381	1.98
Mahaveer Dasharath Manoji	AIMEP	912	0.53
Rajesh Babu Shinge	IND	880	0.52
Ningappa Subhas Gurav	PPRP	827	0.48
Shivamallappa Basappa Kulali	IND	725	0.43
Arjun Bhagavant Patil	IND	541	0.32
Mehabub Aslam Shaikh	BMUP	210	0.12
Vitthal Ningappa Pujari	NAC	207	0.12
Basappa Kallappa Hanchinal	HJP	183	0.11
	NOTA	842	0.49



## Polling Station Level Election Results

### Number and Name of Polling Stations (PS) (2023)

Number of Polling Stations	Name of Polling Stations	Number of Polling Stations	Name of Polling Stations
1	Nammur Government Senior Primary School, South Room,	22	Government Primary School, West Room,
2	Nammur Government Kannada Senior Primary School, New Building Room No. 3, Muragundi	23	Government Senior Primary School, East Room,
3	Nammur Government Kannada Senior Primary School, New Building Room No. 2, Muragundi	24	Government Senior Primary Kannada School, New Building West Room, Kannala
4	Nammur Government Kannada Senior Kannada Primary School,	25	Government Senior Primary Kannada School, New Building East Room, Kannala
5	Nammura Government Kannada Senior Primary School, Room No.2,	26	Government High School, Room No.2, Kohalli
6	Government Kannada Senior Primary School, North Room,	27	Government High School, Room No.5, Kohalli
7	Government Senior Kannada Primary School, Dakshina Room No.1,	28	Nammura Government Senior Primary Kannada School, Room No.6,
8	Government Senior Kannada Primary School, Dakshina Room No.2,	29	Government High School, Room No.10, Kohalli
9	Government Kannada Senior Primary School, Dakshina Room, Tamvashi Tota,	30	Nammura Government Senior Primary Kannada School, Room No.7,
10	Government Senior Primary Kannada School, New Building Room No.1,	31	Nammura Government Senior Primary Kannada School, Room No.2, Kohalli
11	Government Senior Primary Kannada School, New Building Room No.4, Ramatheertha	32	Nammura Government Senior Primary Kannada School, New Building West Room, Keskara Daddi,
12	Nammur Government Kannada Senior Primary School, West Room, New Building, Siddeshwar Flower Garden, Kottalagi.	33	Coordination Resource Centre, Ireath Office Building,
13	Nammura Government Kannada Junior School, North Room, New Building, Siddeshwar Hoodota,	34	Government Urdu Senior Primary School, West Room,
14	Nammur Government Kannada Senior Primary School, East New Building Liquor Room,	35	Government Urdu Senior Primary School, East Room,
15	Nammur Government Kannada Senior Primary School, East New Building End Room,	36	Mr. Basavalinga Swamiji Pre Primary School, Liquor Room,
16	Nammur Government Kannada Senior Primary School, East New Building, West Hall	37	Government Mla Senior Primary School, North Room No. 2,
17	Govt Senior Primary Kannada School East Room,	38	Government Mla Senior Primary School, Middle Room,
18	Government Senior Primary Kannada School, West Room	39	Government Mla Senior Primary School, South Room,
19	Government Senior Primary Kannada School, North Room,	40	Government Junior Primary Kannada School,
20	Government Senior Primary Kannada School, South Room,	41	Nammura Government Kannada Higher Primary School, Madhavananda Nagar, Telasanga Cross,
21	Government Senior Primary Kannada Boys School, Handara Khodi Tota,	42	Nammur Govt Kannada Junior Primary School, Chavan Housing, Phatarawadi.

Contd....

## Polling Station Level Election Results

### Polling Station-wise Votes Secured by Overall Top Five Parties in Athni Assembly in Assembly Election (AE) under Chikkodi Parliamentary Constituency in Karnataka (2023)

Number of Polling Station	Winner - Laxman. Sangappa. Savadi (INC)	Runner-up - Mahesh. Irangouda. Kumathalli. (BJP)	3rd - Shashikant Padasalagi (JD(S))	4th - Rajesh. Babu. Shinge (IND)	5th - Basavaraj. Bhimappa. Bisanakoppa (KRPP)	NOTA	Other	Total Votes Secured
36	477	319	5	3	1	4	4	813
37	287	124	4	2	0	1	2	420
38	633	182	7	5	1	3	8	839
39	724	157	10	2	1	8	3	905
40	665	313	5	20	0	15	17	1035
41	342	209	4	1	0	3	3	562
42	417	216	3	5	3	1	6	651
43	726	180	5	2	1	5	2	921
44	557	133	3	0	4	5	6	708
45	617	111	6	6	5	7	5	757
46	710	160	5	1	1	0	1	878
47	748	105	0	6	0	5	4	868
48	542	183	8	4	2	2	2	743
49	495	162	3	0	0	1	3	664
50	654	173	4	4	1	1	8	845
51	452	226	2	5	0	5	4	694
52	441	223	3	2	1	1	3	674
53	381	79	4	4	0	0	2	470
54	604	157	5	2	0	1	4	773
55	507	236	4	5	1	5	3	761
56	314	160	5	1	5	1	3	489
57	572	106	11	5	1	2	5	702
58	369	113	7	10	1	5	9	514
59	466	183	3	1	1	0	1	655
60	449	117	3	2	0	5	4	580
61	567	374	5	4	6	1	6	963
62	487	116	6	2	1	3	5	620
63	461	170	1	1	1	4	3	641
64	219	131	0	3	1	2	3	359
65	528	285	8	7	4	3	6	841
66	492	155	6	1	1	3	11	669
67	679	86	3	3	4	2	5	782
68	270	83	3	2	1	4	3	366
69	683	246	7	9	6	7	5	963
70	370	68	3	1	2	1	1	446

Contd....

## Polling Station Level Election Results

**Winner, Runner-up and 3rd Party Position & Winning Margin According to Polling Stations in Athni Assembly in Assembly Election (AE) under Chikkodi Parliamentary Constituency in Karnataka (2023)**

Polling Station Number	Winner Party	Winner Votes (%)	Runner-up Party	Runner-up Votes (%)	Winning Margin Votes (%)	Third Party	Third Party Votes (%)	Other Votes (%)
71	INC	740 (76.6)	BJP	199 (20.6)	541 (56)	IND (RBS)	7 (0.72)	20 (2.07)
72	INC	941 (80.57)	BJP	181 (15.5)	760 (65.07)	JD(S)	15 (1.28)	31 (2.65)
73	INC	496 (83.78)	BJP	88 (14.86)	408 (68.92)	JD(S)	4 (0.68)	4 (0.68)
74	INC	665 (76)	BJP	175 (20)	490 (56)	KRPP	7 (0.8)	28 (3.2)
75	INC	524 (75.4)	BJP	155 (22.3)	369 (53.1)	AAP	9 (1.29)	7 (1.01)
76	INC	341 (73.33)	BJP	118 (25.38)	223 (47.95)	KRPP	3 (0.65)	3 (0.65)
77	INC	676 (71.91)	BJP	245 (26.06)	431 (45.85)	JD(S)	4 (0.43)	15 (1.6)
78	INC	499 (81.14)	BJP	94 (15.28)	405 (65.86)	KRPP	6 (0.98)	16 (2.6)
79	INC	498 (80.06)	BJP	114 (18.33)	384 (61.73)	JD(S)	2 (0.32)	8 (1.29)
80	INC	621 (70.33)	BJP	210 (23.78)	411 (46.55)	IND (RBS)	15 (1.7)	37 (4.19)
81	INC	622 (74.31)	BJP	168 (20.07)	454 (54.24)	KRPP	12 (1.43)	35 (4.18)
82	INC	599 (78.71)	BJP	145 (19.05)	454 (59.66)	JD(S)	7 (0.92)	10 (1.31)
83	BJP	400 (50.63)	INC	354 (44.81)	46 (5.82)	AAP	19 (2.41)	17 (2.15)
84	INC	549 (63.62)	BJP	273 (31.63)	276 (31.99)	JD(S)	9 (1.04)	32 (3.71)
85	INC	480 (63.83)	BJP	241 (32.05)	239 (31.78)	IND (RBS)	15 (1.99)	16 (2.13)
86	BJP	293 (50.96)	INC	272 (47.3)	21 (3.66)	JD(S)	2 (0.35)	8 (1.39)
87	INC	484 (64.71)	BJP	253 (33.82)	231 (30.89)	KRPP	3 (0.4)	8 (1.07)
88	INC	371 (61.53)	BJP	218 (36.15)	153 (25.38)	IND (RBS)	6 (1)	8 (1.33)
89	INC	414 (61.88)	BJP	244 (36.47)	170 (25.41)	JD(S)	4 (0.6)	7 (1.05)
90	INC	305 (56.48)	BJP	217 (40.19)	88 (16.29)	AAP	5 (0.93)	13 (2.41)
91	INC	474 (71.6)	BJP	178 (26.89)	296 (44.71)	AAP	4 (0.6)	6 (0.91)
92	INC	309 (53.28)	BJP	255 (43.97)	54 (9.31)	KRPP	8 (1.38)	8 (1.38)
93	INC	416 (55.47)	BJP	316 (42.13)	100 (13.34)	AAP	6 (0.8)	12 (1.6)
94	INC	482 (76.27)	BJP	133 (21.04)	349 (55.23)	JD(S)	3 (0.47)	14 (2.22)
95	INC	449 (76.36)	BJP	130 (22.11)	319 (54.25)	IND (RBS)	3 (0.51)	6 (1.02)
96	INC	404 (78.29)	BJP	104 (20.16)	300 (58.13)	JD(S)	4 (0.78)	4 (0.78)
97	INC	538 (72.12)	BJP	186 (24.93)	352 (47.19)	AAP	6 (0.8)	16 (2.14)
98	INC	645 (72.23)	BJP	212 (23.74)	433 (48.49)	KRPP	17 (1.9)	19 (2.13)
99	INC	265 (60.09)	BJP	164 (37.19)	101 (22.9)	AAP	5 (1.13)	7 (1.59)
100	INC	489 (61.9)	BJP	280 (35.44)	209 (26.46)	KRPP	7 (0.89)	14 (1.77)
101	INC	234 (53.55)	BJP	195 (44.62)	39 (8.93)	AAP	2 (0.46)	6 (1.37)
102	INC	661 (67.45)	BJP	279 (28.47)	382 (38.98)	IND (RBS)	17 (1.73)	23 (2.35)
103	INC	421 (61.82)	BJP	236 (34.65)	185 (27.17)	IND (RBS)	8 (1.17)	16 (2.35)
104	INC	633 (67.63)	BJP	277 (29.59)	356 (38.04)	KRPP	8 (0.85)	18 (1.92)
105	INC	485 (59.73)	BJP	313 (38.55)	172 (21.18)	JD(S)	2 (0.25)	12 (1.48)

Contd....

## Socio-Economic Amenities - Rural

### Access to Education Facilities

Particulars	Number of Village (% of Population)				
	Available	Not Available	If Not Available (Distance of Nearest Facility)		
			A	B	C
Govt. Primary School	56 (98)	2 (2)	0 (0)	0 (0)	0 (0)
Private Primary School	24 (57)	34 (43)	0 (0)	0 (0)	0 (0)
Govt. Middle School	55 (98)	3 (2)	0 (0)	3 (2)	0 (0)
Private Middle School	18 (50)	40 (50)	0 (0)	0 (0)	0 (0)
Govt. Secondary School	30 (64)	28 (36)	9 (12)	5 (5)	0 (0)
Private Secondary School	17 (38)	41 (62)	2 (1)	3 (3)	0 (0)
Govt. Senior Secondary School	6 (20)	52 (80)	4 (5)	18 (22)	12 (26)
Private Senior Secondary School	9 (21)	49 (79)	5 (7)	3 (4)	3 (4)
Govt. Arts and Science Degree College	2 (8)	56 (92)	7 (13)	21 (31)	24 (40)
Private Arts and Science Degree College	1 (1)	57 (99)	0 (0)	0 (0)	3 (8)
Govt. Engineering College	0 (0)	58 (100)	0 (0)	0 (0)	0 (0)
Private Engineering College	0 (0)	58 (100)	0 (0)	0 (0)	58 (100)
Govt. Medicine College	0 (0)	58 (100)	1 (1)	0 (0)	12 (21)
Private Medicine College	0 (0)	58 (100)	3 (7)	16 (27)	26 (44)
Govt. Management Institute	0 (0)	58 (100)	0 (0)	1 (1)	0 (0)
Private Management Institute	1 (1)	57 (99)	0 (0)	1 (2)	54 (94)
Govt. Polytechnic	1 (0)	57 (100)	2 (9)	16 (25)	36 (60)
Private Polytechnic	1 (1)	57 (99)	0 (0)	0 (0)	2 (5)
Govt. Vocational Training School/ITI	1 (5)	57 (95)	3 (10)	19 (26)	30 (51)
Private Vocational Training School/ITI	4 (9)	54 (91)	0 (0)	0 (0)	2 (5)
Govt. Non Formal Training Centre	1 (2)	57 (98)	4 (14)	19 (26)	30 (51)
Private Non Formal Training Centre	0 (0)	58 (100)	0 (0)	1 (1)	3 (6)
Govt. School For Disabled	0 (0)	58 (100)	2 (9)	13 (15)	41 (71)
Private School For Disabled	0 (0)	58 (100)	0 (0)	0 (0)	2 (5)
Government Others	1 (3)	57 (97)	0 (0)	0 (0)	5 (8)
Private Others	0 (0)	58 (100)	0 (0)	0 (0)	0 (0)

Note : Distance A : Less than 5 km; B : Between 5-10 km; C : 10+ km.; Source : Data Analysis is based on 2011 Census.

## DISCLAIMER

The Terms of Use and Disclaimer of Datanet India Private Limited (hereinafter referred to as "Datanet") for use of this analysis report of **Athni Assembly Constituency (Athni Vidhan Sabha)** :-

1. **Assembly Factbook™** is a Registered Trade Mark owned by Datanet.
2. All the maps are sketched and graphical representation only and have not been drawn to the scale and also not to represent the actual geographical area or boundary of the unit.
3. The data for the aforesaid analysis is based on authentic sources and has been culled from the various publications of Census, CSO and NSSO for district and block level data, various central and state government departments, Central & State Elections Commissions and the concerned Returning Officers' releases, Electoral Rolls, Election results and allied publications, internal assessment, surveys, estimates and analysis. Therefore, certain adjustment of data at micro level may have been done to arrive closer to the macro data.
4. Data have been provided on an "As Is" and "As AVAILABLE" basis
5. The colours shown in the maps or diagram and charts of a particular party, alliance or AC are indicative and do not represent them.
6. This publication which includes maps, sheets, graphs and data would be the property under copyright of Datanet only. The user may use these for its internal study, analysis and research purposes. It's public display, re-selling or any commercial uses by the user are not allowed.
7. Datanet has taken due care and caution in compilation and processing of data and allied information, but does not guarantee the accuracy, adequacy or completeness of any information/analysis and will be not responsible for any errors or omissions or for the results obtained from the use of such information/analysis.
8. All the contents for the publication have been culled from various authentic sources and Datanet reasonably believes such sources to be reliable, but does not make any representations, express or implied as to the accuracy or fitness of use of such information. The information or contents of the information/analysis do not constitute advice and should not be relied upon in making (or refraining from making) any decision. Any reliance placed upon the information provided by Datanet is the sole responsibility and strictly at the user's risk.
9. In no event will Datanet be liable for any damages (including, without limitation, damages for loss of business projects, or loss of profits) arising in contract, tort or otherwise from the use of or inability to use any of its contents, or from any action taken (or refrained from being taken) as a result of using the analysis or any of its contents. Datanet its directors, owners, editors, officials, employees, distributor and agents or any associate will not be liable for any errors in the information contained or any consequences arising from the use of the contents of the provided information/analysis.
10. If any provision of these terms and conditions is held invalid or illegal or unenforceable for any reason by any court of competent jurisdiction, such provision shall be severed and the remainder of provisions of the terms and conditions shall continue in full force and effect as if the Term of Use had been executed with the invalid, illegal or unenforceable provision eliminated.
11. If there are any discrepancies in the information provided, please bring it to attention of Datanet for suitable rectification measures.

**Buy Online This Complete Book At**  
**Indiastat Publication Book Store**

[www.indiastatpublications.com](http://www.indiastatpublications.com)

or go directly at

[http://www.indiastatpublications.com/  
Assembly\\_factbook/Karnataka/Chikkodi/ Athni](http://www.indiastatpublications.com/Assembly_factbook/Karnataka/Chikkodi/Athni)



 **indiastat**elections

ISBN : 978-93-5802-020-5



9 789358 020205